



Addendum No. 2

City of Coquitlam
Tender 81293

Oakdale Park Stormwater Treatment Facility

Issue Date: April 16, 2024
(Consists of 4 Pages)

Tenderers shall note the following amendments to the **CONTRACT DOCUMENT** as follows:

Revisions

1. Refer to: FORM OF TENDER

REMOVE: *Revised* – Appendix 1 – *Revision No. 1*

REPLACE WITH: *Revised* – Appendix 1 – *Revision No. 2*

Note: Revisions shown in red.

Questions & Clarifications

- Q1) Section 33 40 01S 1.6.2 states:

NOTE: PAYMENT FOR ANY STORM SEWER WORKS WILL NOT BE MADE UNTIL RESTORATION WORK IS COMPLETE TO CITY'S SATISFACTION.

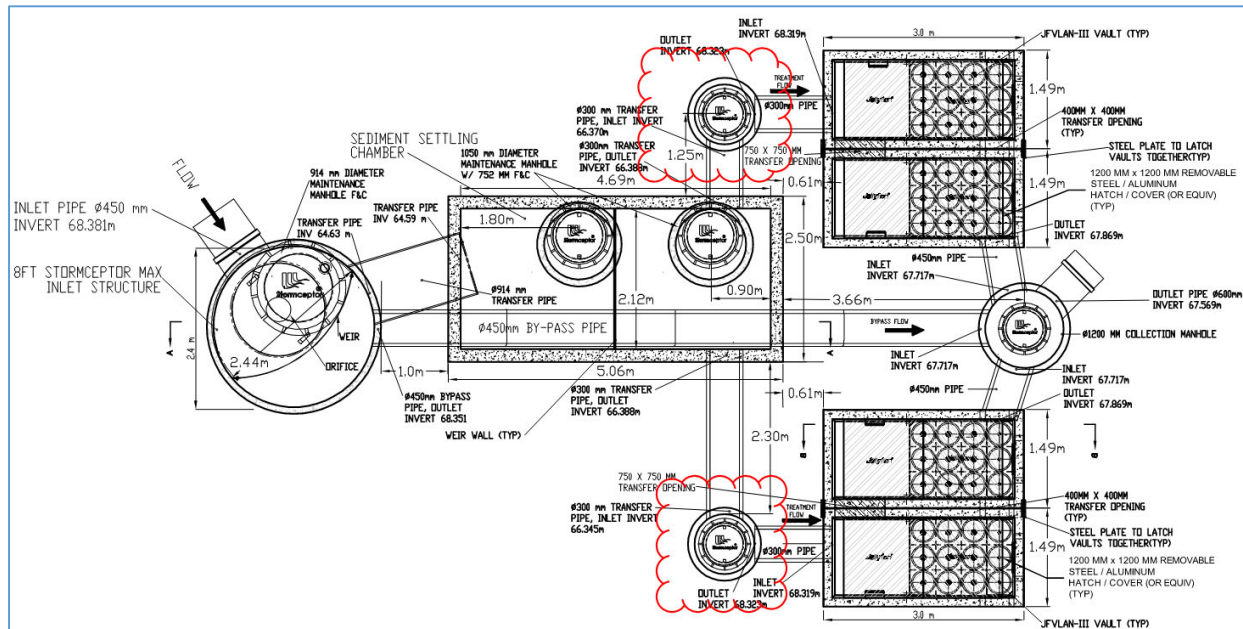
Confirm this applies to the entire scope of the new 1050 C-76 CLIII Conc. Pipe, associated manholes, catchbasins, Treatment Facility, etc. and no payment is to be made until road restoration is fully complete and accepted by the City.

- A1) **Refer to Supplementary Contract Specifications Section 33 40 01S – Storm Sewers, Clause 1.6.3. Depending on site conditions and construction progress, the City may accept alternate solutions for temporary surface restoration over the installed pipes, manholes or treatment facility, as approved by the *Contract Administrator*.**

- Q2) Can you provide CAD files for this project?

- A2) **CAD drawings are not provided for the Tender.**

- Q3) Confirm the MH depth of the manholes (red clouded) in the drawing below. Confirm whether these manholes are sumps. Confirm if there are unique numbers to these manholes:



- A3) There is no unique numbering for the noted manholes (e.g. DXX) because both manholes are considered part of the proposed Storm Water Treatment Facility system (Pay Item 17.12).

Imbrium confirms that a 300mm deep sump shall be located below the 300mm inlet pipe inverts in these manholes.

The depth of the marked manholes will be 5.6m (from Rim elevation to sump elevation).

- Q4) On IFC drawing Sheet 3 of 4-23-0476-D1, MH D1 has been illustrated as a 1800mm circle. This does not account for the outside diameter of 2200mm+-. The adjacent primary duct bank for BC hydro is illustrated as an approximate 100mm line. After discussions with BC Hydro this week, they confirmed the DuctBank will be wider than 100mm and could be concrete encased. Given the information that we have stated here, a direct conflict is imminent between MH D1 and the adjacent Hydro duct bank as shown by the Binnie. How will the City address this conflict, has the designer of this project considered this impact and have they communicated with BC hydro on a relocation strategy for the Hydro duct that will not affect the project schedule ?

- A4) The Contract Drawings have been prepared by the Engineer of Record with information provided from as-built drawings of existing utilities, including the as-builts provided by BC Hydro.

Refer to Supplementary Contract Specifications Section 00 72 43S, Contract Specific Notations, Clause 1.10 – Location of Existing Utilities, for Contractor responsibilities for onsite verification of utilities.

Refer to Instruction to Tenderers, Clause 8.0 – Tenderers are referred to GC 11.2.1 of the MMCD regarding Concealed or Unknown Conditions.

Q5) On IFC 23-0476-TS1 Sheet 02 of 04 Section 1 the bypass pipe is not shown connected to MH D09 as it is shown on the STORMCEPTOR MAX 4713 to JELLYFISH FILTER JFVLAN-IV SECTION A-A drawing. Confirm which drawing is correct and whether the bypass pipe is connected to MH D09.

A5) The bypass pipe is connected between D08 to D09 as shown on Imbrium Proposal Drawing – Revision No. 1 (provided as part of Addendum No. 1). Section 1 on Sheet 02 of 04 of the Contract Drawings will be updated in the Issued for Construction set for consistency.

End of Addendum No. 2

Tenderers shall take into account the content of this Addendum in the preparation and submission of the Tender which will form part of the contract and should be acknowledged on the Tender form where indicated.

Upon submitting a Tender, Tenderers will be deemed to have received all addenda and considered the information for inclusion in the Tender submitted.

Issued by:

M. Pain
Procurement Manager
Email: bid@coquitlam.ca

Revised - APPENDIX 1 - Revision No. 2**FORM OF TENDER****Contract 81293****Oakdale Park Stormwater Treatment Facility****SCHEDULE OF QUANTITIES AND PRICES**

(see paragraph 5.3.1 of the Instruction to Tenderers)

(All Tender and Contract Prices shall NOT include GST. GST will apply upon payment)**(Should there be any discrepancy in the information provided, the City's original file copy shall prevail)**

ITEM NO.	MMCD Ref. / (Supp. Specs)	DESCRIPTION	UNIT	QTY	UNIT PRICE	EXTENDED AMOUNT
1.00	01 55 005	TRAFFIC CONTROL, VEHICLE ACCESS AND PARKING				
1.01	(1.5.1)	Traffic Control and Management				Incidental to Contract
2.00	01 57 015	ENVIRONMENTAL PROTECTION				
2.01	(1.6.1)	ESC supply & installation, maintenance and removal				Incidental to Contract
3.00	01 58 015	PROJECT IDENTIFICATION				
3.01	(1.3.1)	Construction Zone Information Signs	ea.	2		
4.00	03 30 205	CONCRETE WALKS, CURBS AND GUTTERS				
4.01	(1.4.3)	Remove and Replace Concrete Curb and Gutter (MMCD C5) (Provisional)	Lm	25		
5.00	31 23 17	ROCK REMOVAL				
5.01	1.6	Rock Removals (Provisional)	cu.m	10		
6.00	31 24 135	ROADWAY EXCAVATION, EMBANKMENT, AND COMPACTION				
6.01	(1.8.5)	Common Excavation (Removal and Off-site Disposal for on-site regrading works at 827 North Rd) (Provisional)	cu.m	10		
6.02	(1.8.5)	Remove Existing Concrete Driveways and Sidewalks (All Depths) (Sawcut, Removal and Off-site Disposal for on-site works at 827 North Rd)	sq.m	110		
6.03	(1.8.10)	Over-excavation (Provisional)	cu.m	10		
7.00	32 01 16.75	COLD MILLING				
7.01	(1.5.4)	Surface mill - 35mm depth for Permanent Pavement Trench Restoration (as per COQ-G4)	sq.m	225		
8.00	32 11 16.15	GRANULAR SUBBASE				
8.01	(1.4.3)	75mm Minus Granular Base (for on-site driveway works at 827 North Rd)	tonne	95		
9.00	32 11 235	GRANULAR BASE				
9.01	(1.4.3)	19mm Minus Granular Base (for on-site driveway works at 827 North Rd)	tonne	55		
10.00	32 12 13.15	ASPHALT TACK COAT				
10.01	(1.5.1)	Asphalt Tack Coat - Emulsified Asphalt	sq.m	225		
11.00	32 12 165	HOT-MIX ASPHALT CONCRETE PAVING				
11.01	(1.5.1)	MMCD Upper Course #2 Asphalt - 35mm Thick Permanent Pavement Trench Restoration	sq.m	225		
11.02	(1.5.3)	MMCD Upper Course #2 Asphalt - 75mm Thick Driveway (for on-site driveway works at 827 North Rd)	tonne	30		
12.00	32 31 135	CHAIN LINK FENCES AND GATES				
12.01	(1.5.1)	1.5m high Chain Link Fence	Lm	40		
12.02	(1.5.2)	1.5m high Chain Link Sliding Gate with Pin Assembly-Style Latch	Lm	7.6		
13.00	32 91 215	TOP SOIL AND FINISH GRADING				
13.01	(1.4.1)	Imported Topsoil - 150mm Thick (Provisional)	cu.m	40		
14.00	32 92 195	HYDRAULIC SEEDING				
14.01	1.8.1	Hydraulic Seeding (Provisional)	sq.m	240		
15.00	33 11 015	WATERWORKS				
15.01	(1.8.4)	Isolate existing 200mm CI Water main and provide temporary water service to 831 North Rd	L.S.	1		
15.02	(1.8.4)	Cap and abandon existing 20mm water service at 827 North Rd at main as per COQ-W2g	L.S.	1		
16.00	33 30 015	SANITARY SEWERS				
16.01	(1.6.3)	Cap and abandon existing 100mm sanitary service at 827 North Rd at main as per COQ-S18	L.S.	1		
17.00	33 40 015	STORM SEWERS				
17.01	(1.6.2)	Prop. 450mm C-14 CL3 Conc. Pipe	Lm.	14		
17.02	(1.6.2)	Prop. 600mm C-14 CL3 Conc. Pipe	Lm.	16.5		
17.03	(1.6.2)	Remove existing 600mm Conc. STM pipe and replace with Prop. 600mm C-14 CL3 Conc. Pipe	Lm.	2.5		
17.04	(1.6.2)	Remove existing 900mm Conc. STM pipe and replace with Prop. 1050mm C-76 CLIII Conc. Pipe	Lm.	61		
17.05	(1.6.2)	Remove existing 1050mm Conc. STM pipe and replace with Prop. 1200mm C-76 CLIII Conc. Pipe	Lm.	17.5		
17.06	(1.6.3)	Reconnect existing 150mm storm service from 831 North Rd to Prop. 1050mm Conc. STM pipe.	L.S.	1		
17.07	(1.6.3)	Cap and abandon existing 100mm storm service at 827 North Rd	L.S.	1		
17.08	(1.6.5)	Prop. 150mm PVC DR28 Catchbasin Lead	Lm.	9		
17.09	(1.6.9)	Tie-in into existing STM MH with Prop 900mm x 1050mm Conc. Reducer	each	1		
17.10	(1.6.9)	Tie-in into existing STM MH with Prop 600mm Conc. Pipe	each	1		
17.11	(1.6.9)	Tie-in into existing 1200mm STM Pipe with Prop 1800mm Manhole	each	1		
17.12	(1.6.12)	Prop. Storm Water Treatment Facility : Includes Stormceptor MAX MH D08, Collection STM MH D09, Sediment Settling Chamber, JFVLAN-III Jellyfish Vaults, c/w stainless steel flush mount sleeve for a 3" diameter davit arm pole and receiver	L.S.	1		
18.00	33 44 015	MANHOLES AND CATCHBASINS				
18.01	(1.5.1.1)	1050mm Manhole Lid, slab and Frame and Cover c/w manhole base and benching	ea.	3		
18.02	(1.5.1.1)	1800mm Manhole Lid, slab and Frame and Cover c/w manhole base and benching	ea.	1		
18.03	(1.5.1.2)	1050mm Manhole Riser Sections	vert.m.	4.3		
18.04	(1.5.1.2)	1800mm Manhole Riser Sections	vert.m.	1.6		
18.05	(1.5.1.3)	1050mm Manhole Tee on 1200mm Conc. Pipe (MH D02)	ea.	1		
18.06	(1.5.1.3)	1050mm Manhole Tee on 1050 Conc. Pipe c/w 600mm Conc. Pipe Stub (MH D03)	ea.	1		
18.07	(1.5.1.3)	1050mm Manhole Tee on 1050 Conc. Pipe c/w 450mm Conc. Pipe Stub and Conc. Diversion Weir (MH D04)	ea.	1		
18.08	(1.5.1.3)	600mm x 1200mm C76 Concrete Reducer	ea.	1		
18.09	(1.5.1.3)	900mm x 1050mm C76 Concrete Reducer	ea.	1		
18.10	(1.5.1.3)	1050mm x 1200mm C76 Concrete Reducer	ea.	1		
18.11	(1.5.1.3)	1200mm x 1200mm x 1200mm C76 Concrete Wye	ea.	1		
18.12	(1.5.1.3)	1200mm diameter C76 Concrete 45 degree Mitre Bend	ea.	1		
18.13	(1.5.2)	Remove existing catchbasin and replace with Prop. Side Inlet Catchbasin as per COQ-S11A	ea.	1		

Total Tendered Price (exclude GST):

(Transfer the amount to Form of Tender Summary Page 1)