

BYLAW NO. 4110, 2010

A Bylaw to amend the "City of Coquitlam
Citywide Official Community Plan Bylaw No. 3479, 2001" and amending Bylaws

WHEREAS:

- A. Certain changes are necessary for the clarification and effective and efficient operation of Bylaw No. 3479, 2001 and amending Bylaws, in accordance with the *Local Government Act*, R.S.B.C, 1996, c. 323;
- B. And it is deemed desirable to amend certain regulations or certain zoned areas, or both, after the Public Hearing, in accord with the Local Government Act, R.S.B.C, 1996, c. 323;

NOW THEREFORE, the Council of the City of Coquitlam, in open meeting lawfully assembled, ENACTS AS FOLLOWS:

1. Name of Bylaw

This Bylaw may be cited for all purposes as the "Citywide Official Community Plan Amendment Bylaw No. 4110, 2010".

2. Bylaw No. 3479, 2001 shall be amended as follows:

- 1) **Table of Contents – Citywide Official Community Plan** is amended by replacing the text "3.1 Air Quality, Climate Change and Energy" with "3.1 Taking Local Action to Address Climate Change"
- 2) By repealing and replacing **Part 2, Section 3.1 Air Quality, Climate Change and Energy** in its entirety with the content of Schedule "A" which is annexed to this Bylaw.


READ A FIRST TIME this 19th day of April, 2010.

READ A SECOND TIME this 10th day of May, 2010.

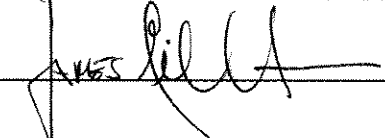
READ A THIRD TIME this 10th day of May, 2010.

CONSIDERED AT A PUBLIC HEARING this 10th day of May, 2010.

GIVEN FOURTH AND FINAL READING and the Seal of the Corporation affixed this 10th day of May, 2010.



MAYOR



CLERK

Schedule "A" to Bylaw 4110, 2010

3.1 Taking Local Action to Address Climate Change

ISSUES

A GLOBAL ISSUE REQUIRING A LOCAL RESPONSE

Climate change has global, regional and local implications for ecosystems, infrastructure and people. The 2007 report of the International Panel on Climate Change (IPCC) concludes that the earth's climate is changing, the change is being caused by human activities, and its effects will worsen if no action is taken. Unchecked, climate change is expected to have significant impacts on food production, water supply, ecosystems and the frequency of extreme weather events.



The largest source of greenhouse gas (GHG) emissions is carbon dioxide released through combustion of fossil fuels used to move vehicles and heat and power buildings. A smaller proportion of emissions is methane produced from decomposing waste.

Recognizing the required collective effort and important role municipal governments can play in mitigating climate change, the Provincial Government amended Section 877 (Bill 27, 2008) of the *Local Government Act*, requiring all municipalities to include targets, policies and actions to reduce greenhouse gases in their Official Community Plans.

For several years, Coquitlam's Official Community Plan has included and developed a land use and transportation policy framework that complements climate action. The following policies and actions build on existing CWOCP policy directions, outlining additional ways the City is prepared to strengthen its action on climate change.

THE NEED FOR BROADER COOPERATION

The long range policy framework of Coquitlam's Official Community Plan provides a solid foundation to make significant progress towards complete, compact, walkable and transit oriented communities; however, **it is clear that the City's community-wide greenhouse gas reduction targets will only be reached with further action by senior levels of government, particularly in the key sectors of buildings and transportation.**

RESPONSES

OBJECTIVE

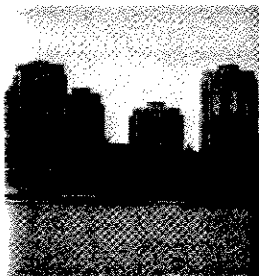
Coquitlam will work in cooperation with senior levels of government to reduce the City's annual community-wide greenhouse gas emissions 15% below 2007 levels by 2031 and per capita annual greenhouse gas emissions 30% below 2007 levels by 2021.

POLICIES and ACTIONS

Community-wide



- a. Complete a Community Greenhouse Gas Reduction Strategy by the end of 2011 to support the City in integrating energy and GHG reduction opportunities in broader land use, transportation, solid waste and infrastructure planning.
- b. Complete the on-going update of the City's Strategic Transportation Plan, in accordance with the work program approved by Council in 2009.
- c. Continue to pursue opportunities to implement the City's Corporate Climate Action Plan, demonstrating the City's commitment to local climate action.
- d. Encourage Regional, Provincial and Federal levels of government to expand and improve measures to reduce greenhouse gases through actions such as leading edge research, incentive programs, expansion of transit service, progressive building codes and strengthened legislation.



Land Use

- e. In consultation with the community, explore the longer term transition of low density neighbourhood commercial centres to vibrant, walkable mixed-use nodes. To improve access to daily needs for Coquitlam residents, also give consideration to strategically extending existing commercial centres or establishing new ones, scaled to the neighbourhood context.
- f. Explore, in consultation with the community, broader opportunities for facilitating new housing choices in Southwest Coquitlam's lower density neighbourhoods.
- g. Continue to support, in consultation with the community, further transition of the City Centre to a highly urban and vibrant downtown with a compact mix of land uses and employment opportunities.
- h. Support integration of the planned Evergreen Rapid Transit Line through station area planning that considers transit oriented land uses and densities.
- i. Support future rapid transit service along the Lougheed corridor with transit supportive land uses around stations in the longer term.

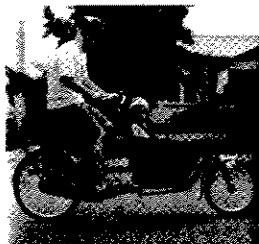
POLICIES AND ACTIONS cont'd/

- j. Focus the majority of growth within 800 metres of high frequency transit service.
- k. Explore opportunities to integrate more live/work uses throughout the City.
- l. Explore implementation tools to provide greater opportunities for smaller format commercial offices in neighbourhood centres to encourage and support small business.
- m. Create opportunities for a diversity of service and entertainment destinations in neighbourhood centres.



Transportation

- n. Support continued and steady implementation of new cycling and pedestrian facilities in coordination with the Strategic Transportation Plan, as amended.
- o. Work with transit planning/operational authorities to implement priority measures that support transit throughout the City, in coordination with the Strategic Transportation Plan and Neighbourhood Plans, as amended (e.g. support for frequent transit network service, separate bus lanes, signal systems, queue jumpers).
- p. Increase walking and cycling connectivity and infrastructure at the neighbourhood scale, beginning with the City Centre.
- q. Promote, and where possible invest in, transportation demand management (TDM) measures in new developments and in neighbourhood centres and the City Centre (e.g., car sharing, bike end-of-trip facilities, telecommuting, parking reductions).
- r. Explore the development of policies to support low emission vehicles – hybrids, plug-in electrics, electric scooters (e.g. dedicated premium parking, vehicle plug-ins).
- s. Work with key partners to promote education & outreach programs to support active transportation – walking & cycling (e.g. walking school bus program).

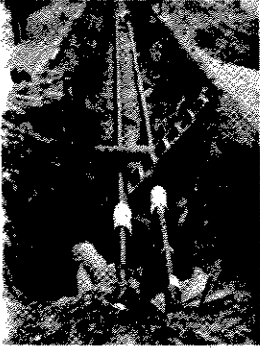


Buildings

- t. Continue to support a high increase in multi-unit residential and mixed use development.
- u. Explore strategic outreach and education opportunities to encourage building owners and users to reduce energy use, reduce solid waste, and invest in renewable on-site energy (commercial, institutional, light industrial and residential).

POLICIES AND ACTIONS cont'd/

- v. Explore opportunities for strategic outreach and education for developers, realtors and other stakeholders to promote energy efficiency, passive design and renewable energy technologies and practices.
- w. Explore market-sensitive land use tools to encourage higher performance buildings, passive design and renewable energy. (e.g. Development Permit Areas, streamlining approval of permits, Rezoning, Development Cost Charges, Sustainability Checklist)



Energy Supply

- x. Continue to encourage implementation of district energy in Northeast Coquitlam Village Centre and Waterfront Village Centre (Fraser Mills).
- y. Explore potential opportunities for district energy systems in fast growing Coquitlam neighbourhood centres (both new and existing).

Solid Waste

- z. Support Metro Vancouver efforts to increase recycling and diversion of organic waste through City programs and initiatives.
- aa. Encourage Provincial and Federal Governments to legislate measures to reduce waste (e.g., extended producer responsibility, product stewardship and reduced packaging).



Air Quality

- bb. Recognize the benefits of vegetation and landscaping treatments in improving air quality, and regulating temperature.
- cc. Encourage best practices by construction and other industries to minimize airborne dust and fine particles.
- dd. Continue to support the Metro Vancouver air monitoring program and Air Quality Management Plan (AQMP).
- ee. Continue to learn and benefit from the work of other government agencies, including public education efforts.