

ACCESSIBILITY AND INCLUSION ADVISORY COMMITTEE

Please note that this meeting is scnt free

DATE: Tuesday, September 2, 2025

TIME: 7:00 p.m. to 9:00 p.m.

PLACE: Council Committee Room, Coquitlam City Hall

CALL TO ORDER AND TERRITORIAL ACKNOWLEDGEMENT

ADOPTION OF MINUTES

1. **Minutes of the Accessibility and Inclusion Advisory Committee Meeting held on Tuesday, June 3, 2025**

Recommendation:

That the Minutes of the Accessibility and Inclusion Advisory Committee Meeting held on Tuesday, June 3, 2025 be approved.

NEW BUSINESS

2. **Burke Mountain Community Centre and Burke Village Park Design Update (Presentation by Director Major Capital Projects)**
7:05 – 7:35 p.m. (30 minutes)
3. **Canada Day and Coquitlam Pride Update (Introductory comments from Accessibility and Inclusion Specialist)**
7:50 – 8:00 p.m. (10 minutes)
4. **Accessibility and Inclusion Plan Development (Standing Agenda Item)**
8:00 – 8:05 p.m. (5 minutes)
5. **Transportation, TransLink and Other Transportation Division Updates (Standing Agenda Item)**
8:05 – 8:20 p.m. (15 minutes)
6. **Committee Members' Roundtable / Emerging Issues (Standing Agenda Item)**
8:20 – 9:00 p.m. (40 minutes)

NC

OTHER BUSINESS

NEXT MEETING DATE – Tuesday, November 4, 2025

ADJOURNMENT

ACCESSIBILITY AND INCLUSION ADVISORY COMMITTEE

Tuesday, June 3, 2025

A Regular Meeting of the Accessibility and Inclusion Advisory Committee convened on Tuesday, June 3, 2025 at 7:00 p.m. in the Council Committee Room, City Hall, 3000 Guildford Way, Coquitlam, BC, with the following persons present:

**Indicates Virtual Attendance*

COMMITTEE MEMBERS: Councillor Matt Djonlic, Chair

Councillor Steve Kim, Vice Chair

Georgina Hackett, Citizen Representative

Alex Kwan, Citizen Representative

Heather Lawson, Citizen Representative

Jen-Che (Arthur) Lee, Citizen Representative

Lelainia Lloyd, Citizen Representative

Ross Renaud, SHARE Family and Community Services* (arrived at 7:21pm)

Pete Stone, Community Ventures Society

Sandra Uno, Citizen Representative

Susan Williamson, Tri-Cities Seniors' Action Society

ABSENT: Paul Jarvie, Citizen Representative

Georgette Reyes, Citizen Representative

GUESTS: Hayley Inglis, Urban Matters* (re Item 4)

STAFF: Michelle Frilund, Senior Manager Equity, Diversity and Inclusion

Heidi Hughes, Manager Tourism and Visitor Economy

Thomas Thivener, Manager Transportation Planning (arrived at 7:04 p.m.)

Raj Singh, Parks Planning Project Manager

Wondy Chan, Culture and Community Events Supervisor

Kate Brown, Accessibility and Inclusion Specialist

Bryan Leung, Committee Clerk

CALL TO ORDER AND TERRITORIAL ACKNOWLEDGEMENT

The Chair called the meeting to order at 7:00 p.m. and provided an Indigenous territorial acknowledgement.

ADOPTION OF MINUTES

1. Minutes of the Accessibility and Inclusion Advisory Committee Meeting held on Tuesday, April 1, 2025

The Minutes of the Accessibility and Inclusion Advisory Committee Meeting held on Tuesday, April 1, 2025 were approved.

NEW BUSINESS

2. Canada Day Accessibility Plan

The Cultural and Community Event Supervisor gave a presentation entitled “Canada Day Accessibility” and referred to slides found in the Agenda package.

Discussion ensued relative to the following:

- Ensuring sections in fencing have wheelchair accessible ramp access into the event.
- Clarification about the free event parking at Douglas College and marking out parking spaces that accommodate accessible vehicles on the Canada Day map.
- Ensuring there is supervision to keep the wheelchair accessible viewing spaces free for those with mobility impairment.
- Providing visitors with shaded areas to take breaks from the sun.
- Providing sensory kits, American Sign Language (ASL) captioning, and wheelchair accessible portable washroom facilities for the event.

Ross Renaud entered the meeting at this point (7:21 p.m.).

3. Fraser Mills Phase 1 Parks Update

The Parks Planning Project Manager gave a presentation entitled “Fraser Mills Park Design Update” and referred to slides found in the Agenda package.

Discussion ensued relative to the following:

- The water play area equipment.
- The need for ongoing consideration of how people with disabilities will access and interact with all park amenities.
- Opportunity to add bike infrastructure to store and lock bikes securely.
- Opportunity to add lighting for evening patrons.
- Opportunity to create spaces that are lower activity, low sensory, and enclosed spaces conducive to parental supervision of children.

- Upcoming connectivity improvements to Nelson Street and the opportunity to create a connection to Fraser Mills Park.

4. Accessibility and Inclusion Plan Development (Standing Agenda Item)

The Senior Manager Equity, Diversity, and Inclusion gave a presentation entitled “Accessibility and Inclusion Plan – Project Updates and Engagement Highlights” and referred to slides found in the Agenda package.

Discussion ensued relative to the following:

- Gratitude to the City’s Equity, Diversity, and Inclusion (EDI) Division for enabling the Committee to review and provide input into draft plans and engagement as subject matter experts and applying an EDI lens to community projects.
- The importance of an engagement process and analysis that balances all accessibility community voices.
- Opportunity for the City to analyze gaps of accessible housing standards in the City’s building codes.
- Opportunity for the Committee to contribute input and review the first draft of the Accessibility and Inclusion Plan.

Hayley Inglis, Urban Matters, left the meeting at this point and did not return (8:02 p.m.).

5. AccessAbility Resource Fair Debrief

The Accessibility and Inclusion Specialist gave introductory comments on the AccessAbility Resource Fair Debrief.

Discussion ensued relative to the following:

- The Fair’s site recognition improvements compared to previous years through the implementation of better signage and having more activities, such as a firetruck and HandyDart, parked out front.
- Appreciation for the interactive activities at the Fair to keep patrons engaged.
- The opportunity to bring in accessible or interactive technology to future events.

6. Transportation, TransLink and Other Transportation Division Updates (Standing Agenda Item)

The Manager, Transportation Planning gave a presentation entitled “Transportation Updates” and referred to slides found in the Agenda package.

Discussion ensued relative to appreciating the changes at Guildford and Pinetree Way and that the development of educational material may benefit all users of the space.

7. Committee Members’ Roundtable / Emerging Issues (Standing Agenda Item)

The Chair invited committee members to share emerging issues and information regarding events occurring in their communities.

Discussion ensued relative to the following:

- Community groups currently adapting pickleball to be wheelchair accessible.
- Updates on height-adjustable adult change tables and their locations in the Lower Mainland.
- Updates on Special Olympics BC’s results at the 2025 Special Olympics World Winter Games, the 2025 Special Olympics BC Games, and waitlist challenges with many special olympic sports due to lack of adequate facilities and volunteers.
- Summer camp registrations opening for Tri-City families at SHARE Family and Community Services and the positive reception of the City’s accessible Park amenities for families.

OTHER BUSINESS

NEXT MEETING DATE – Tuesday, September 2, 2025

ADJOURNMENT

The meeting adjourned at 8:34 p.m.

MINUTES CERTIFIED CORRECT:

Councillor Matt Djonlic, Chair

Bryan Leung, Committee Clerk



City of Coquitlam

Burke Mountain Community Centre & Burke Village Park Design Update

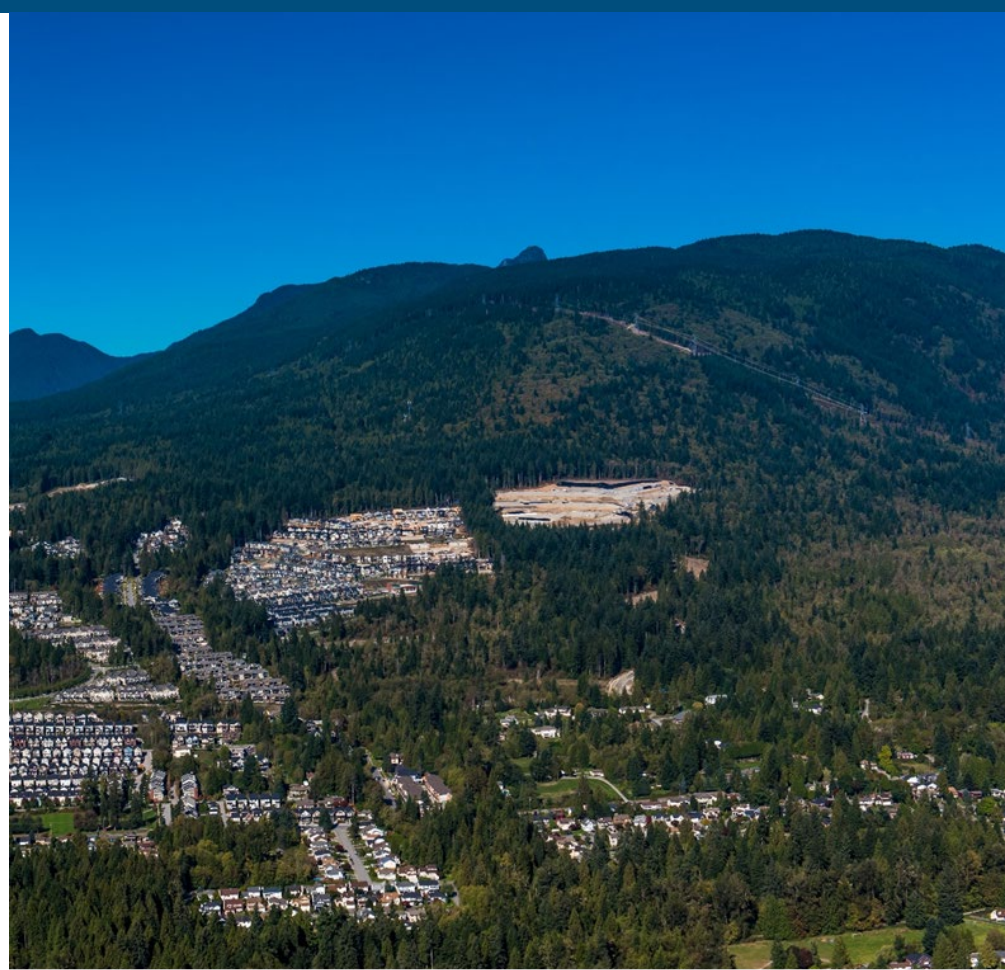
Accessibility and Inclusion Advisory Committee | September 2, 2025

[f](#) [t](#) [@](#) [v](#) [in](#) | coquitlam.ca/

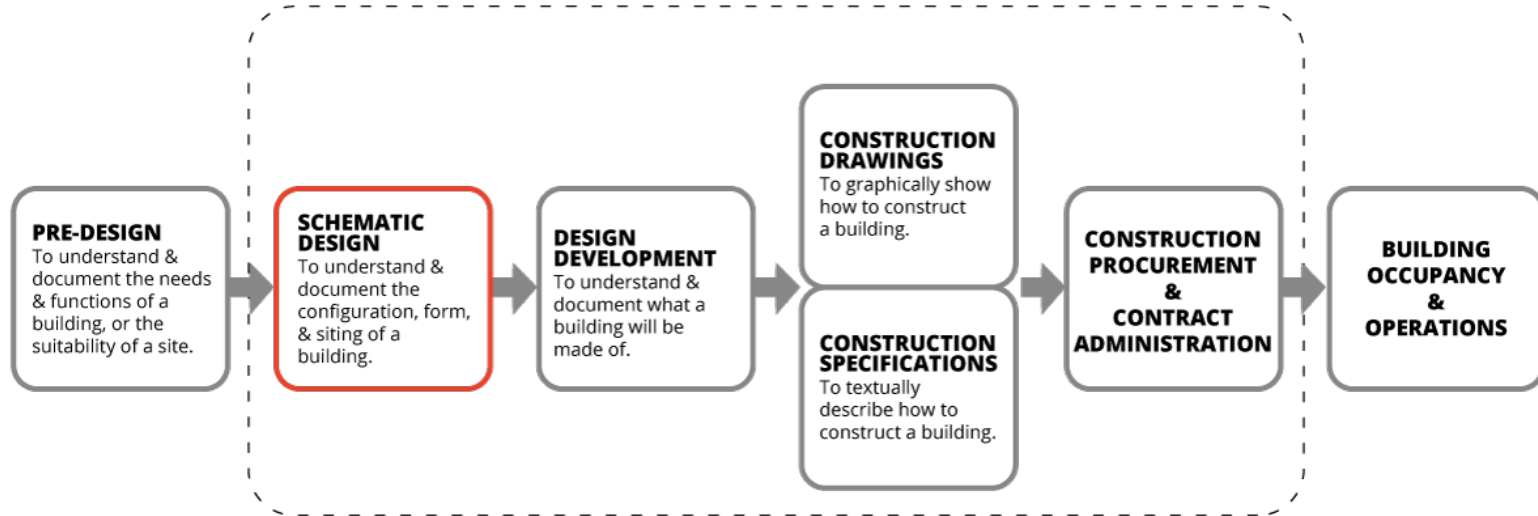
Coquitlam

Agenda

1. Phases of Design
2. Facility Schematic Design
3. Park Schematic Design
4. Accessibility and Inclusion
5. Next Steps



Phases of Design

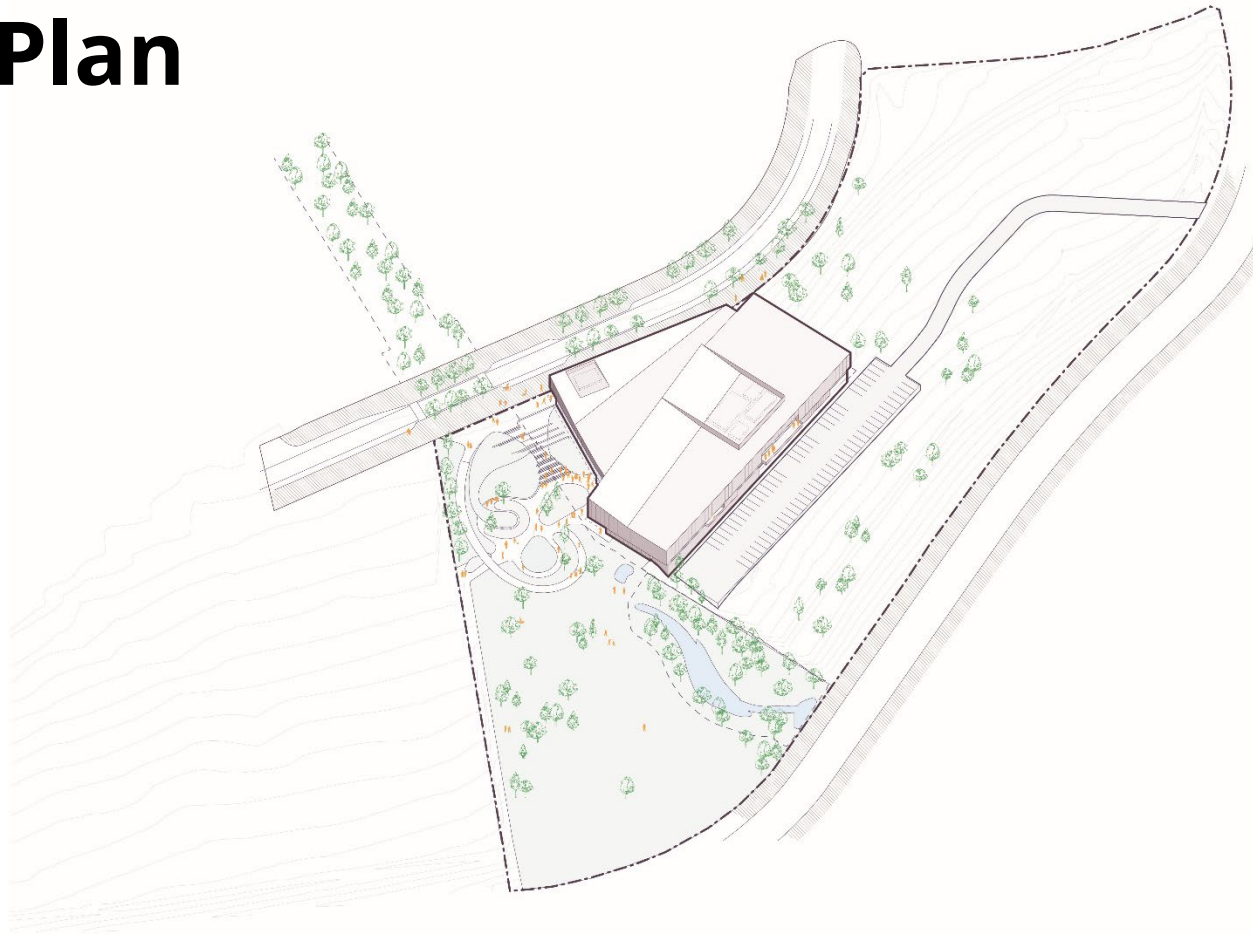


Burke Mountain Community Centre Schematic Design

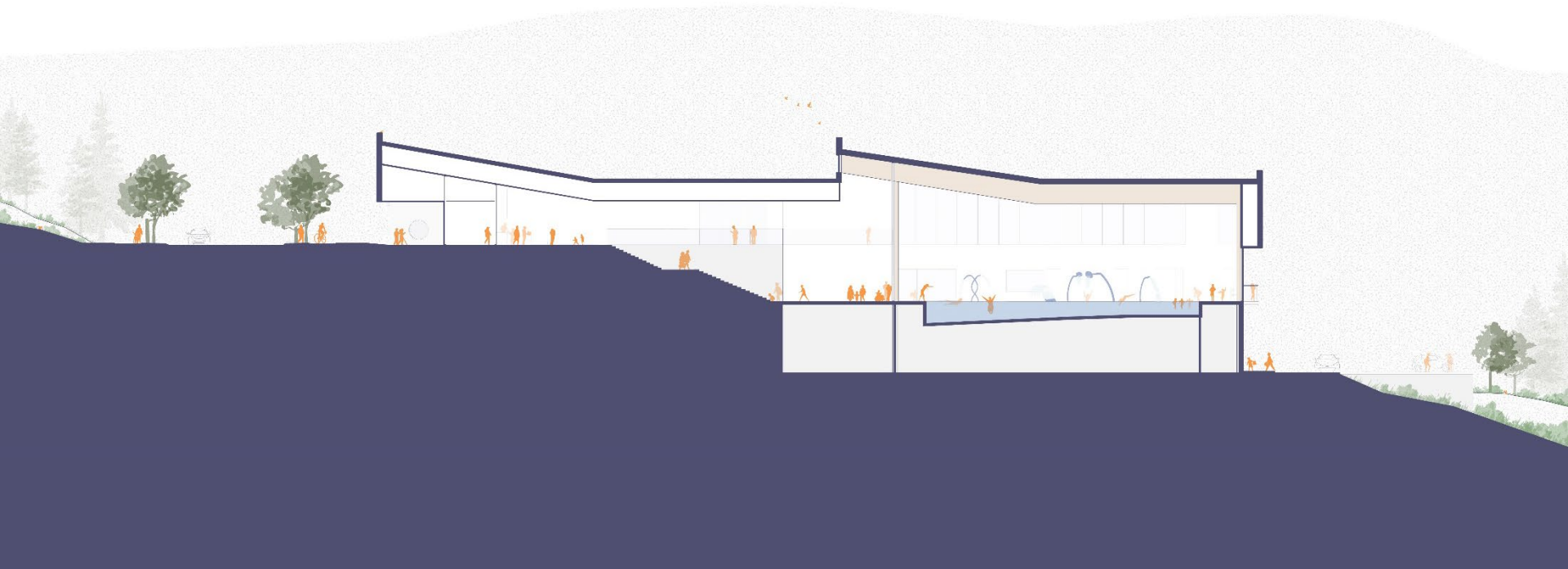
Vision Statement

“The Burke Mountain Community Centre is a catalyst for community, immersed into the landscape and the life of the village. It builds connections and enriches lives by providing a hub for socializing, life-long learning, health, creation and play. The new Centre will respond to the unique social, educational, physical and economic well-being of the Burke Mountain community.”

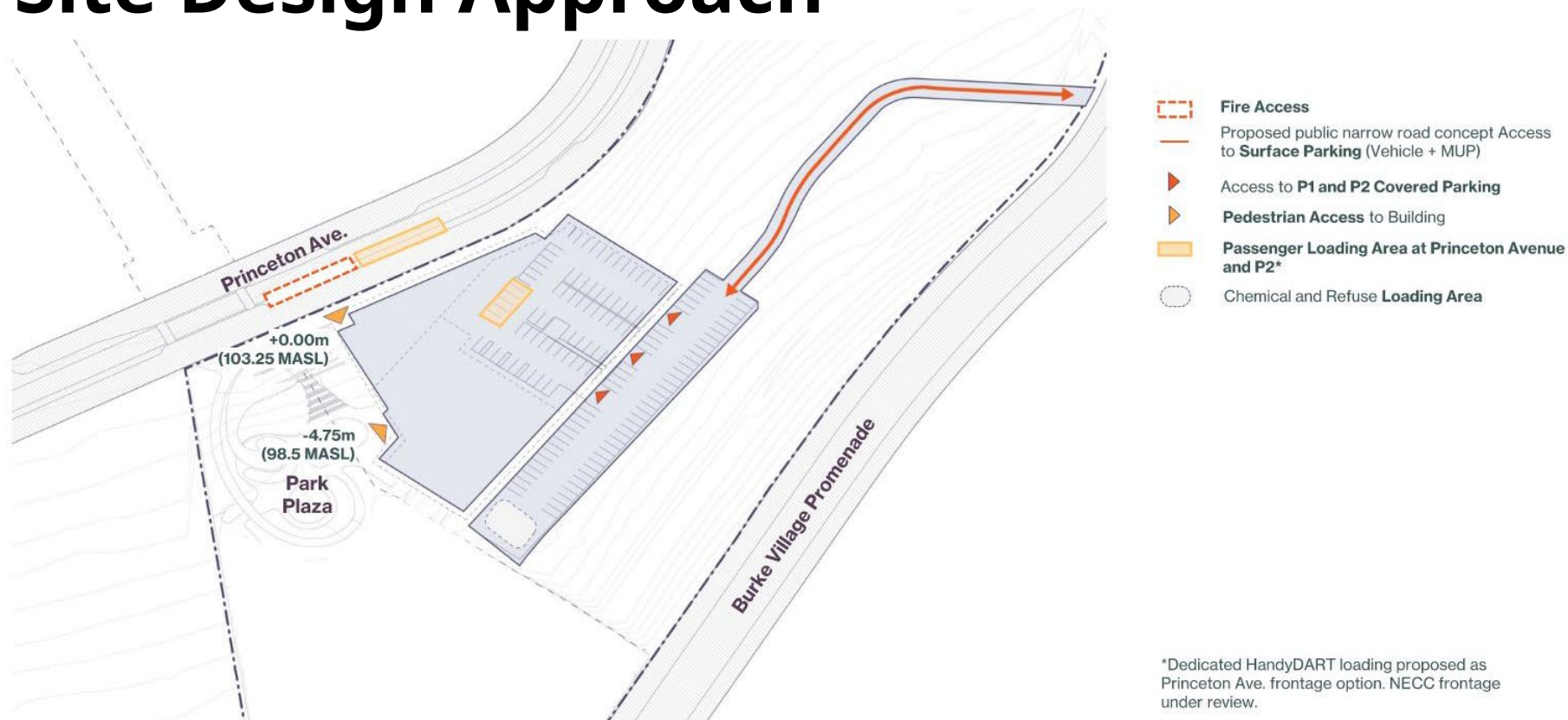
Site Plan



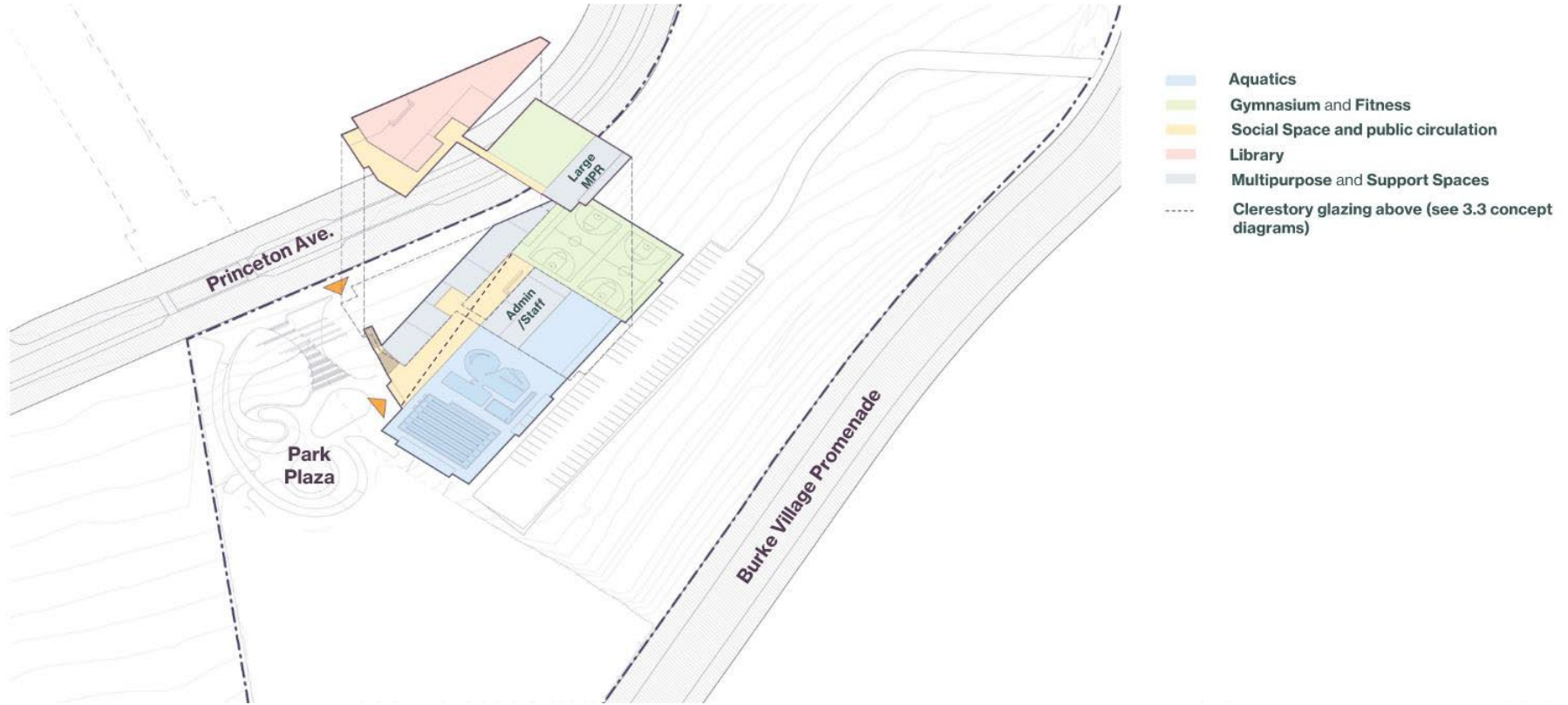
Section Plan



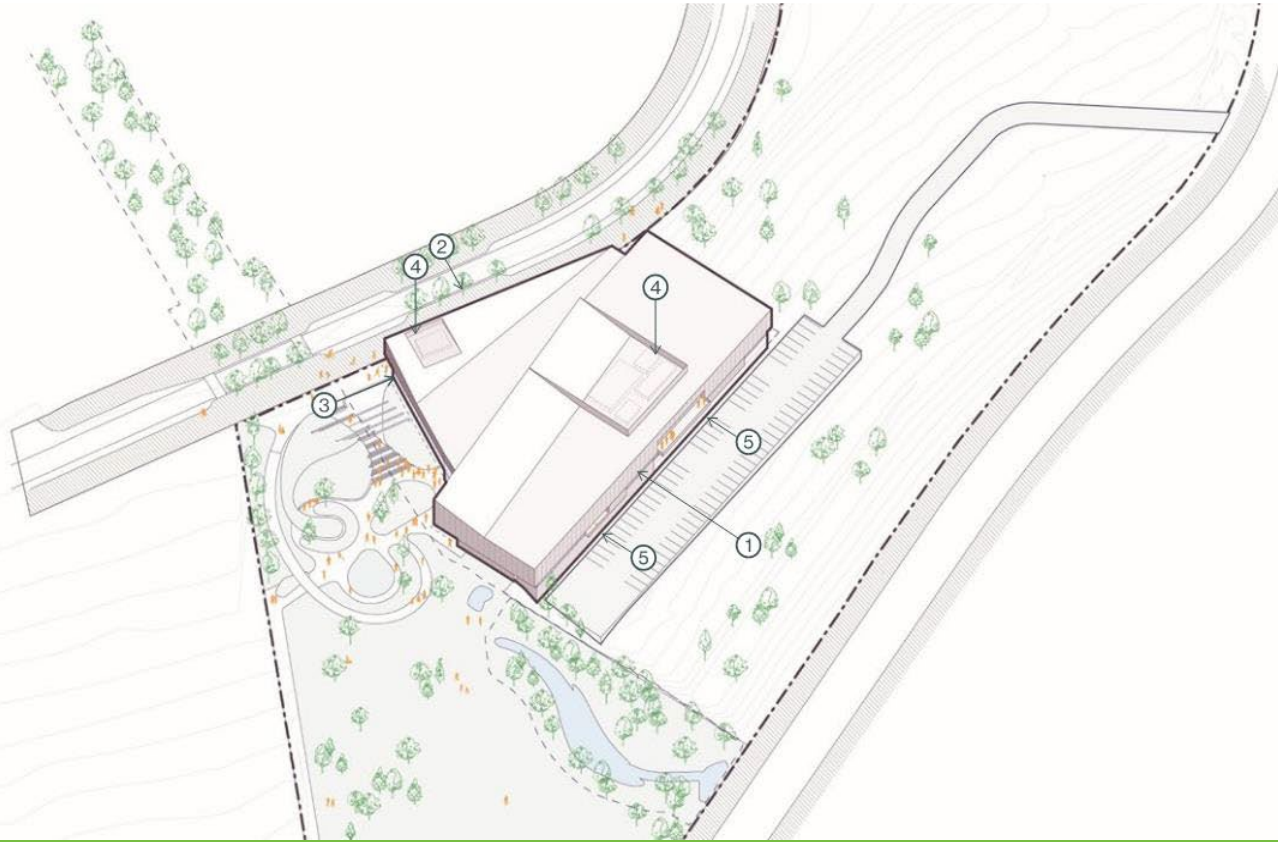
Site Design Approach



Space Planning



Massing and Architectural Expression



- ① Eye-level glazing facing mountain views, massing **overhang** on south façade to control solar exposure.
- ② Eye-level glazing and weather protection **overhang** along Princeton.
- ③ Façade articulation and cladding strategy to facilitate wayfinding on west façade. **Potential screen or vertical fins** for glare protection.
- ④ Rooftop mechanical units screened with a combination of acoustical screens and massing.
- ⑤ Overhanged **exterior balconies**.

Materiality/Color Palette

Inspired from the surrounding Burke Mountain Landscape



View from Princeton Avenue



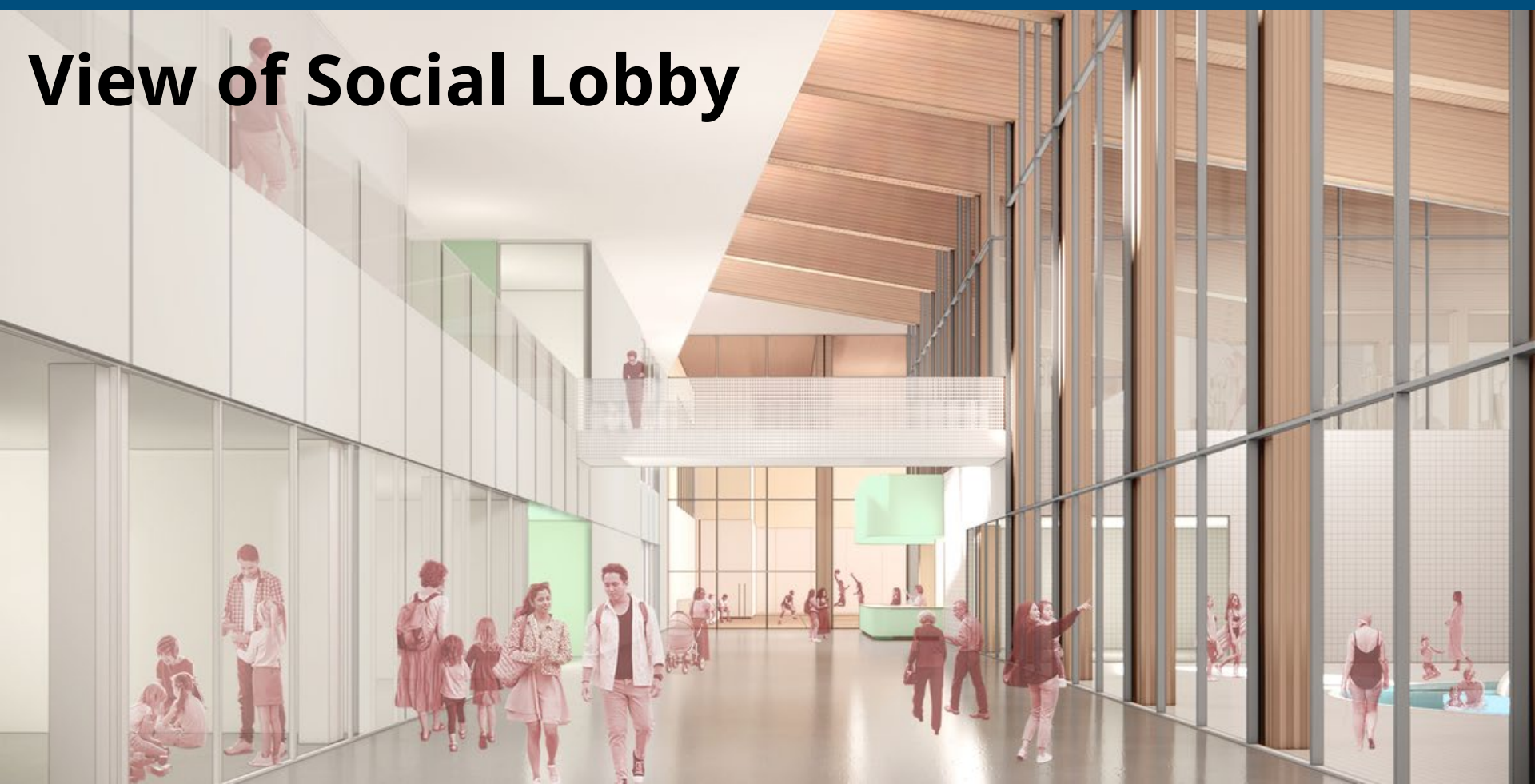
View of the south side of the building from Burke Village Promenade



View of Princeton Avenue street frontage



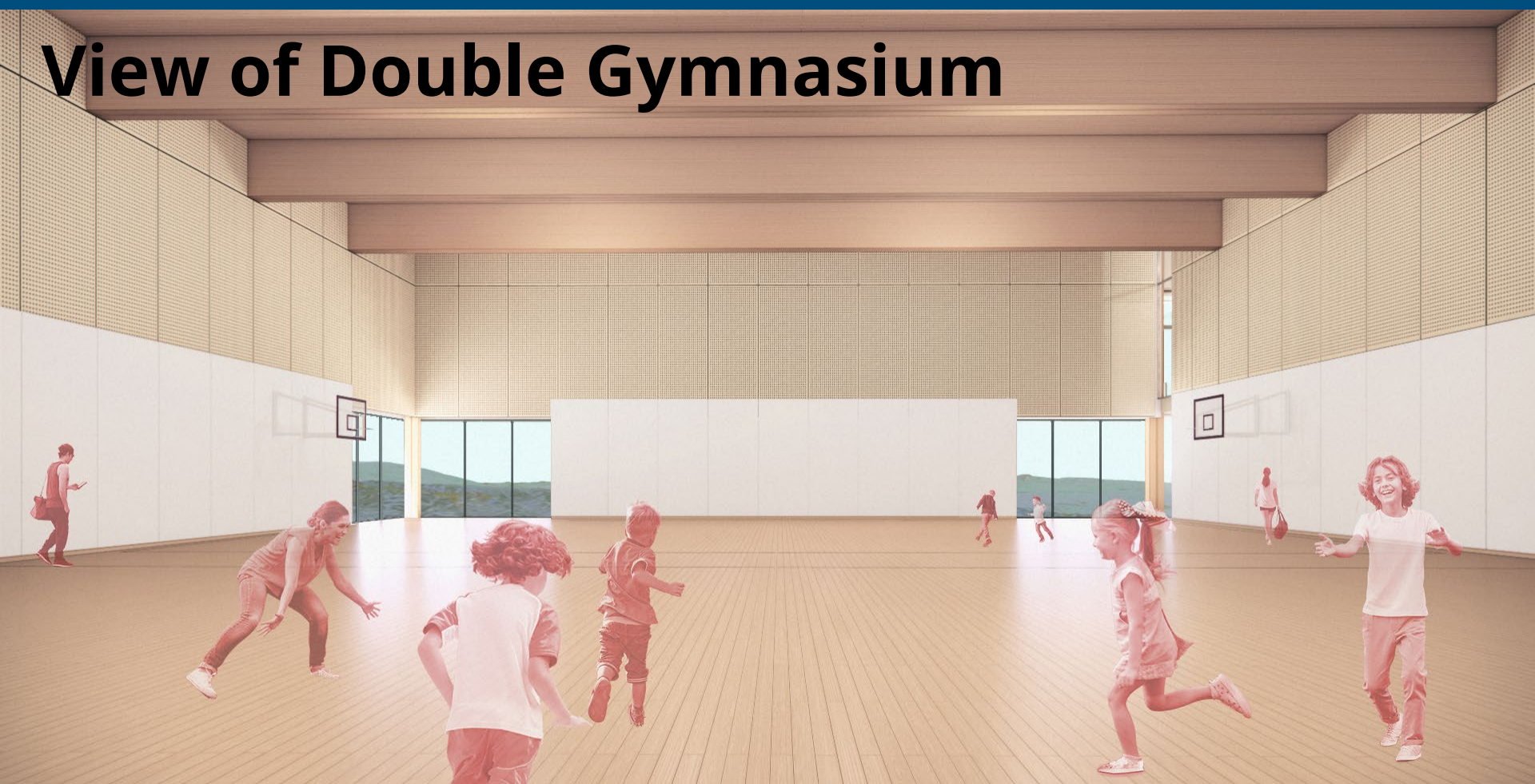
View of Social Lobby



View of Aquatics looking west



View of Double Gymnasium

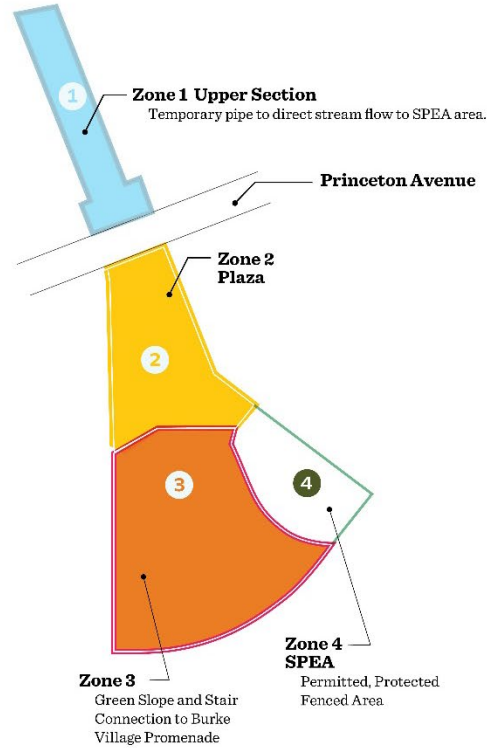


Burke Village Park Schematic Design

Vision Statement

“Burke Village Park is envisioned as a vibrant community heart, seamlessly integrated with the Community Centre.

BVP ZONE MAP OVERALL



Scale: Not To Scale



View of Plaza



Birdseye View



KEY PLAN



Accessibility and Inclusion

Accessibility and Inclusion Highlights

The Burke Mountain Community Centre and Burke Village Park will feature inclusive, accessible amenities and programming designed to welcome and engage people of all ages and abilities (AAA).



RHF Accessibility
Certified



- Design to meet the real accessibility needs of all users and achieve Rick Hansen Certification
- Enhanced wayfinding signage blending with art, diverse culture, languages, ages and abilities
- Accessible slopes and ramps with handrails
- Diverse amenities and programming
- Opportunities for intergenerational and multicultural interactions and participation
- Universally accessible washrooms throughout the facility and designated outdoor accessible washrooms for the park

Next Steps

| Project Phase | Description | Timeline |
|---------------------------------------|---|------------------------|
| Detailed Design | Technical refinement and coordination | Late 2025 |
| Construction Documents and Permitting | Final design documentation, permit applications, and tender preparation | Late 2025 – Early 2026 |
| Early Site Works | Site clearing, erosion and sediment control, utility preparation | Early 2026 |
| Full Construction | Facility and park construction | 2026-Mid 2029 |
| Commissioning and Opening | Staff onboarding, equipment installation, grand opening | Late 2029 |

Thank you! Questions?



Transportation Updates



City of Coquitlam Accessibility & Inclusion Advisory Committee
September 2, 2025
CEDMS #5851891

Coquitlam

Transportation Plan Project Timeline



PHASE 1:
Preparing

PHASE 2:
Discovering

PHASE 3:
Visioning

PHASE 4:
Planning

PHASE 5:
Moving
Forward

**NEW
Plan
2026**

Walking Network

June 25

Micromobility
Network

July 14

Road
Improvements

Fall 2025

Phases 1 & 2 Engagement – Key Insights



Many modes of transportation currently used to move in, around and through Coquitlam

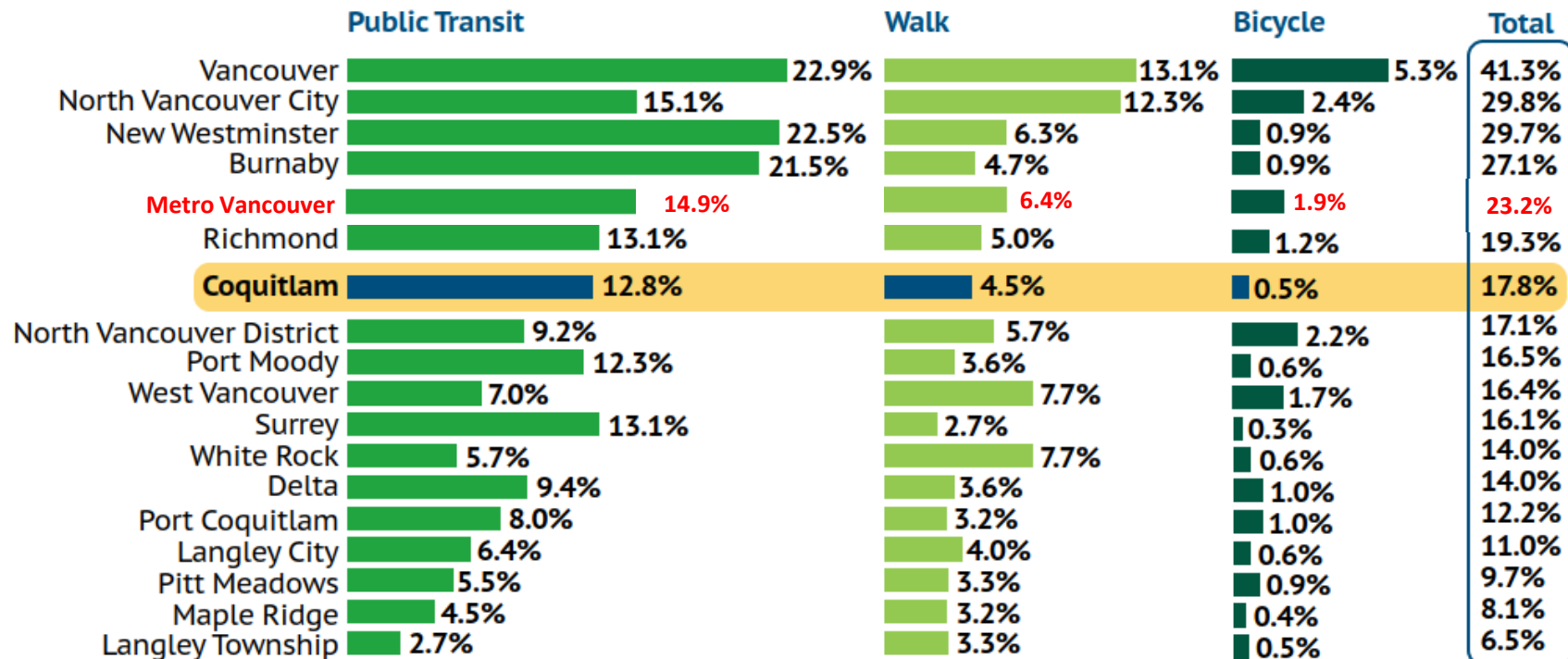


Need for transportation to accommodate **diversity of demographic backgrounds and lived experiences**



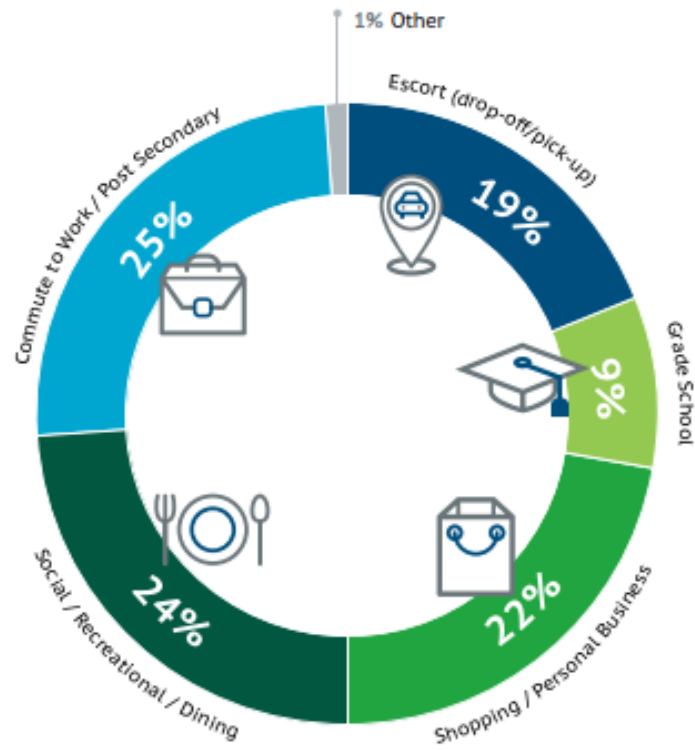
Concerns: safety, inconvenient public transit, high transportation costs

Census 2021 Commute Data



Coquitlam Household Travel Survey (2022)

- **People travel for a wide range of reasons**, not just commuting

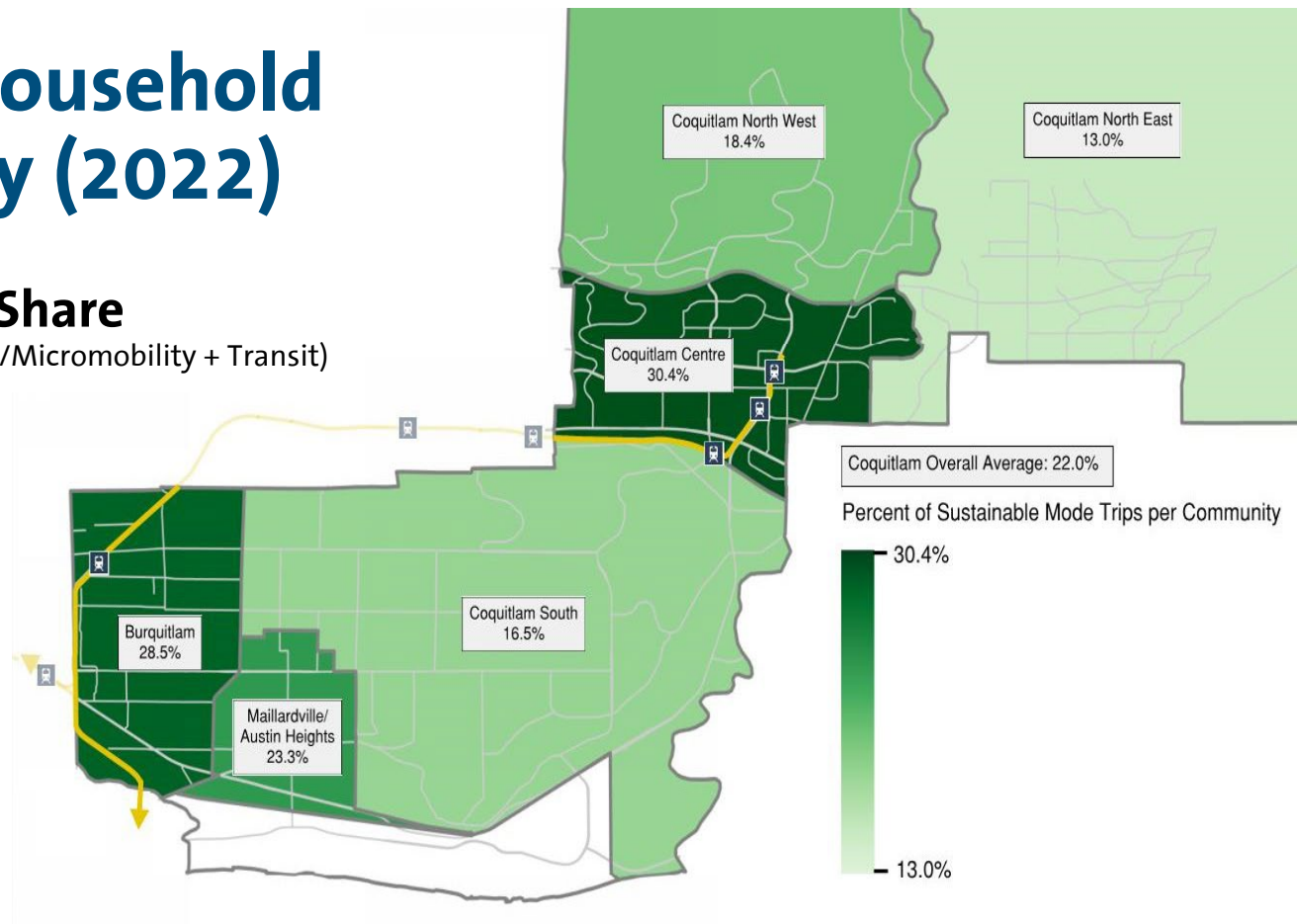
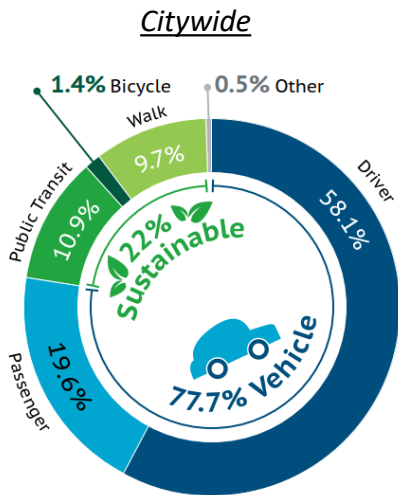




Coquitlam Household Travel Survey (2022)

Sustainable Mode Share

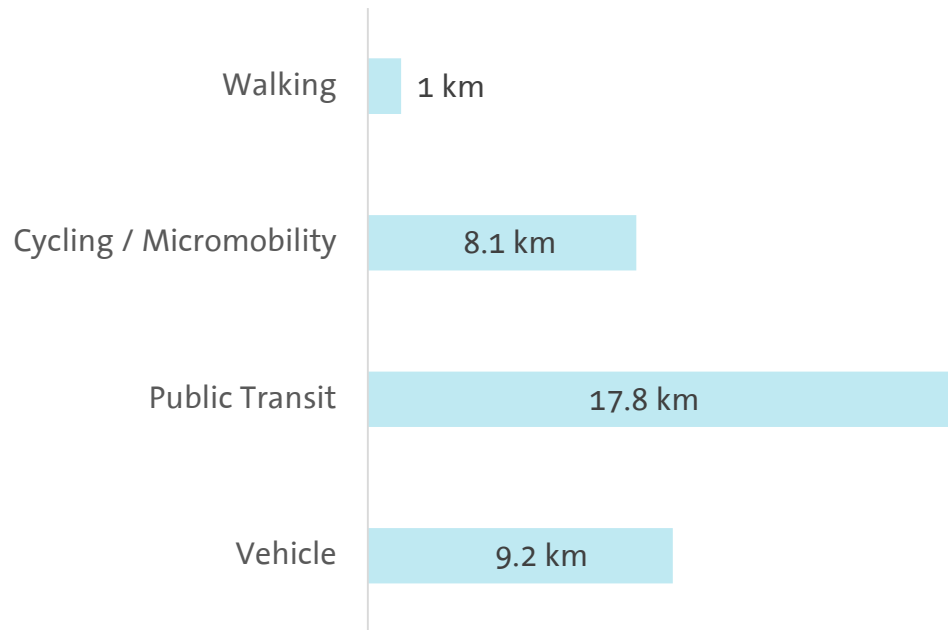
(Sustainable = Walking + Cycling/Micromobility + Transit)



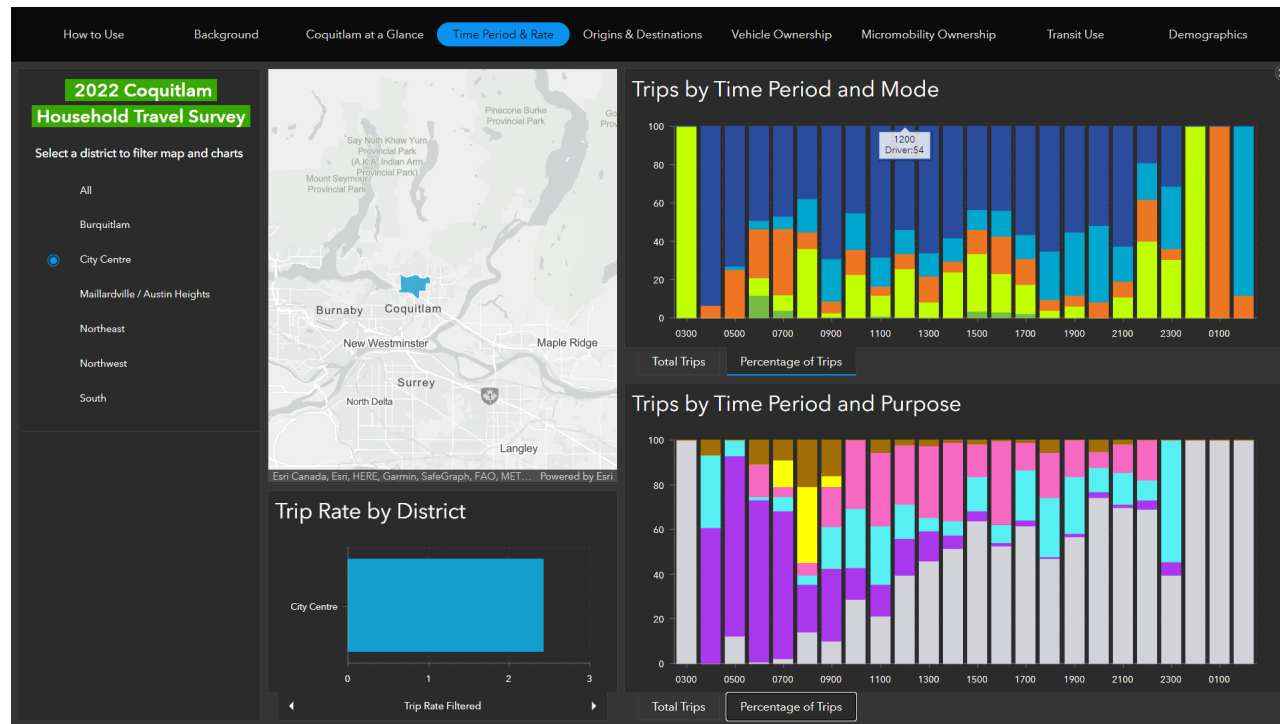
Coquitlam Household Travel Survey (2022)

- 40% of vehicle trips are under 5km
- 65% of vehicle trips are under 10 km

Average Trip Distance



Coquitlam Household Travel Survey (2022)



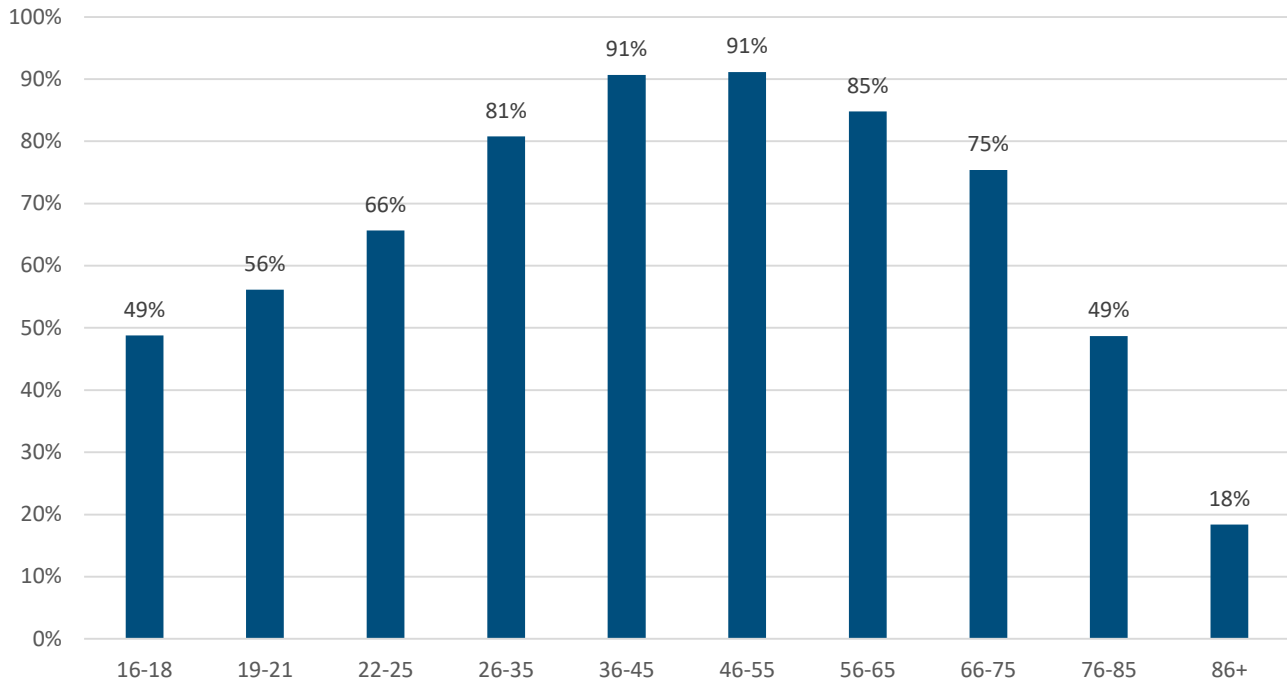
**Interactive survey data
visualization tool**

Visit project engagement
website at
www.letstalkcoquitlam.ca/TransportationPlan



At least 1/3 of Coquitlam's population do not drive

Proportion of Age Group with Driving Licences (Coquitlam)



Source: BC Statistics & ICBC (2023)



Vision

Coquitlam is a **complete** and **connected** community that prioritizes the **sustainable movement** of people and goods to support a **thriving** economy, **healthy** environment and **equitable** society with **accessible, safe** and **reliable** transportation options for all.

Goals

By
2050

Sustainable Mode Share
% of trips by active transportation & public transit

50%

GHG Emissions
Transportation GHG emissions

Zero

Safety
Serious traffic injuries & fatalities

Zero

Themes

Safety and Accessibility for All

Complete and Connected Communities

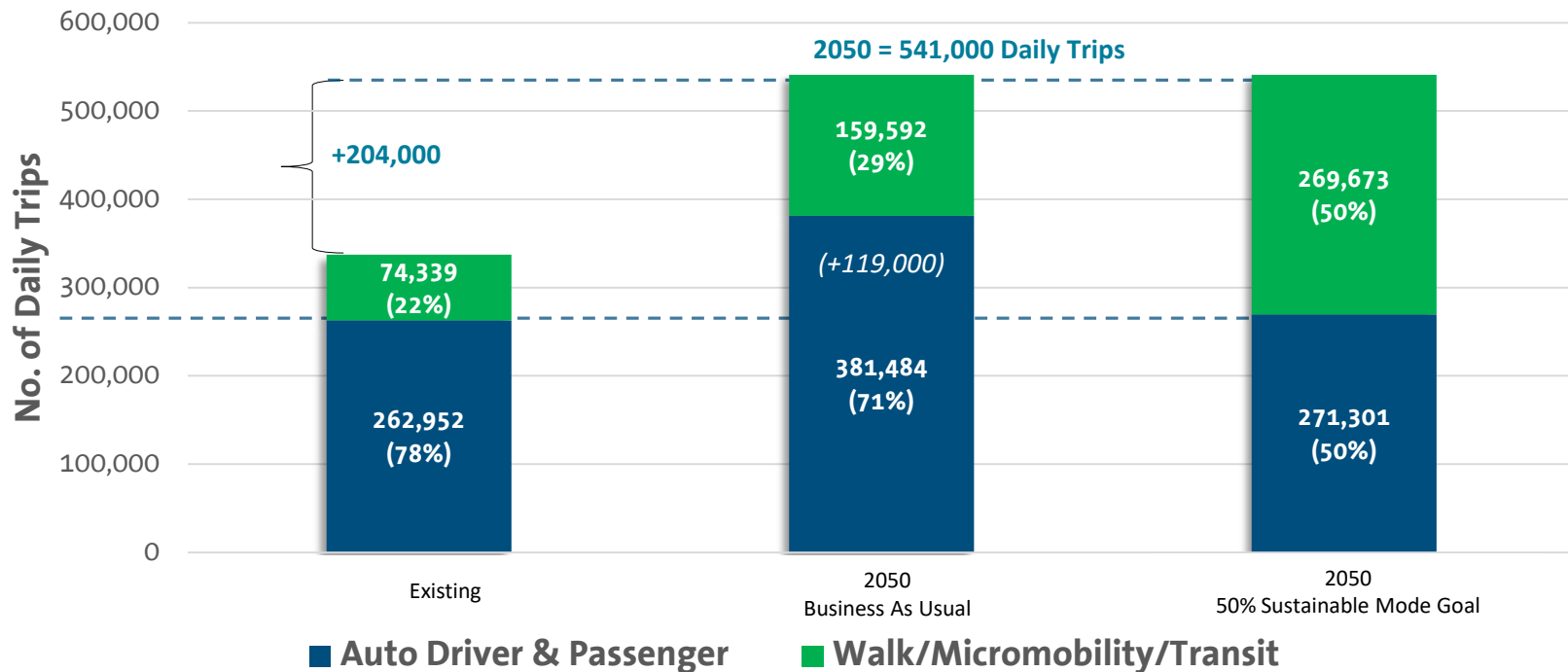
Sustainable and Innovative Mobility

Reliable Transportation Network

Fast and Frequent Transit



Supporting Growth with a People-Focused Transportation System

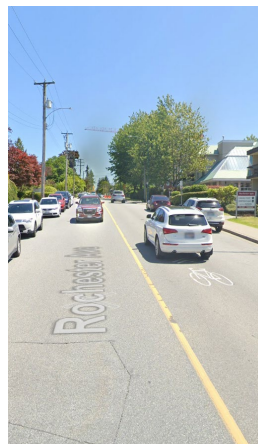




More

Level of Comfort

Less



Guildford Way (Phase 2)

Guildford Way (Phase 1)

Gatensbury St

Daybreak Ave

Foster Ave

Rochester Ave

Type 1A

Ultimate Protected Micromobility Lane

Type 1B

Interim Separated Micromobility Lane

Type 2

Multi-Use Pathway

Type 3

Local Street
Shared Roadway

Type 4

On-Street Micromobility Lane

Type 5

Major Street
Shared Roadway



Micromobility Network SPSC July 2023

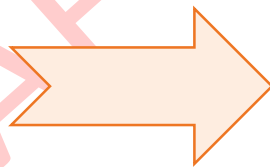
Micromobility Network

Vision

A safe, convenient and comfortable All Ages and Abilities (AAA) network for micromobility users that support all trip purposes from Anywhere to Everywhere.

Goal

That most residents/businesses are located no more than 400m from the Micromobility Network



- ✓ Connect Destinations
- ✓ Remove Barriers
- ✓ Direct Routing
- ✓ Regional Connectivity

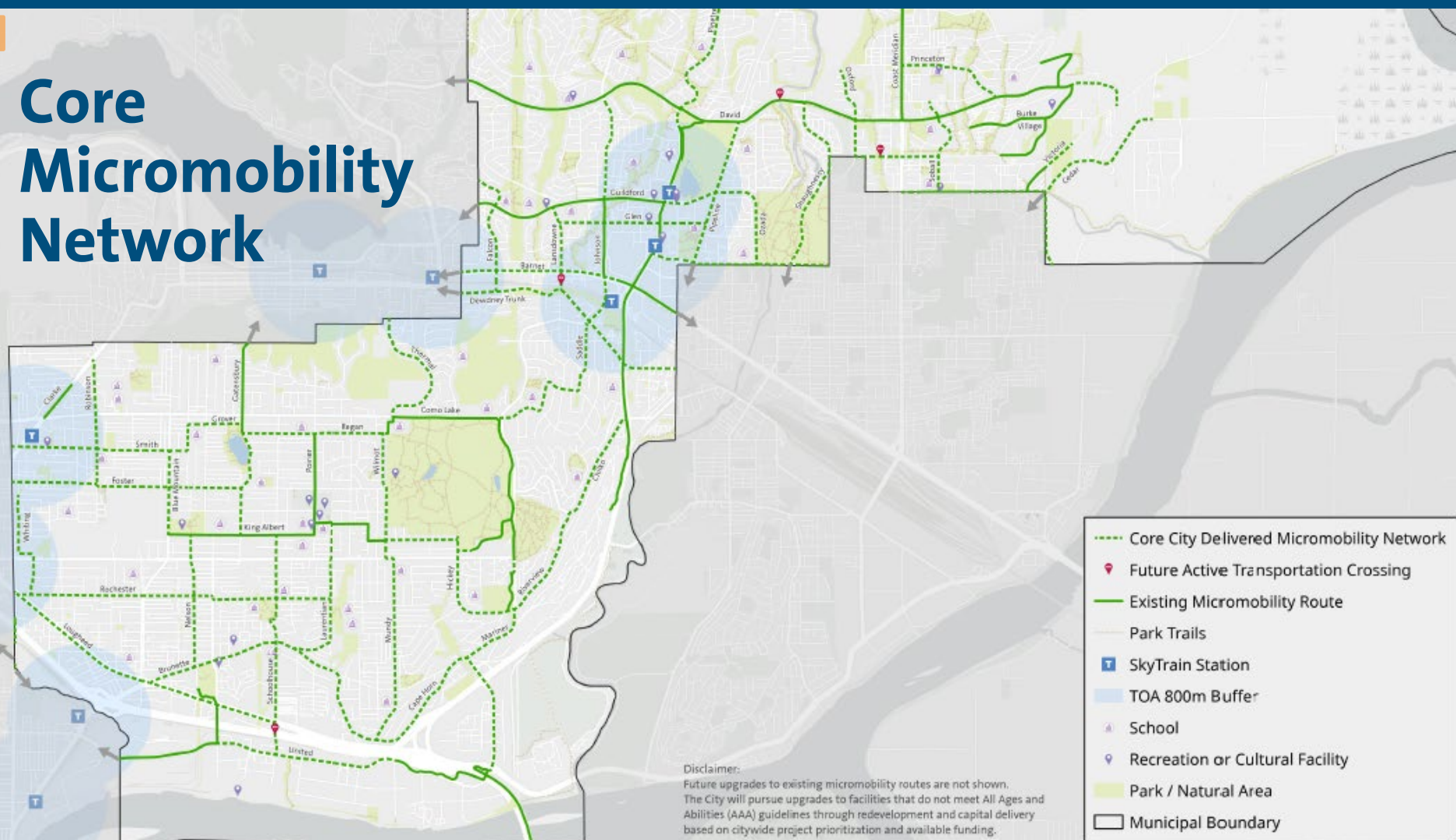


Developing a Core Network

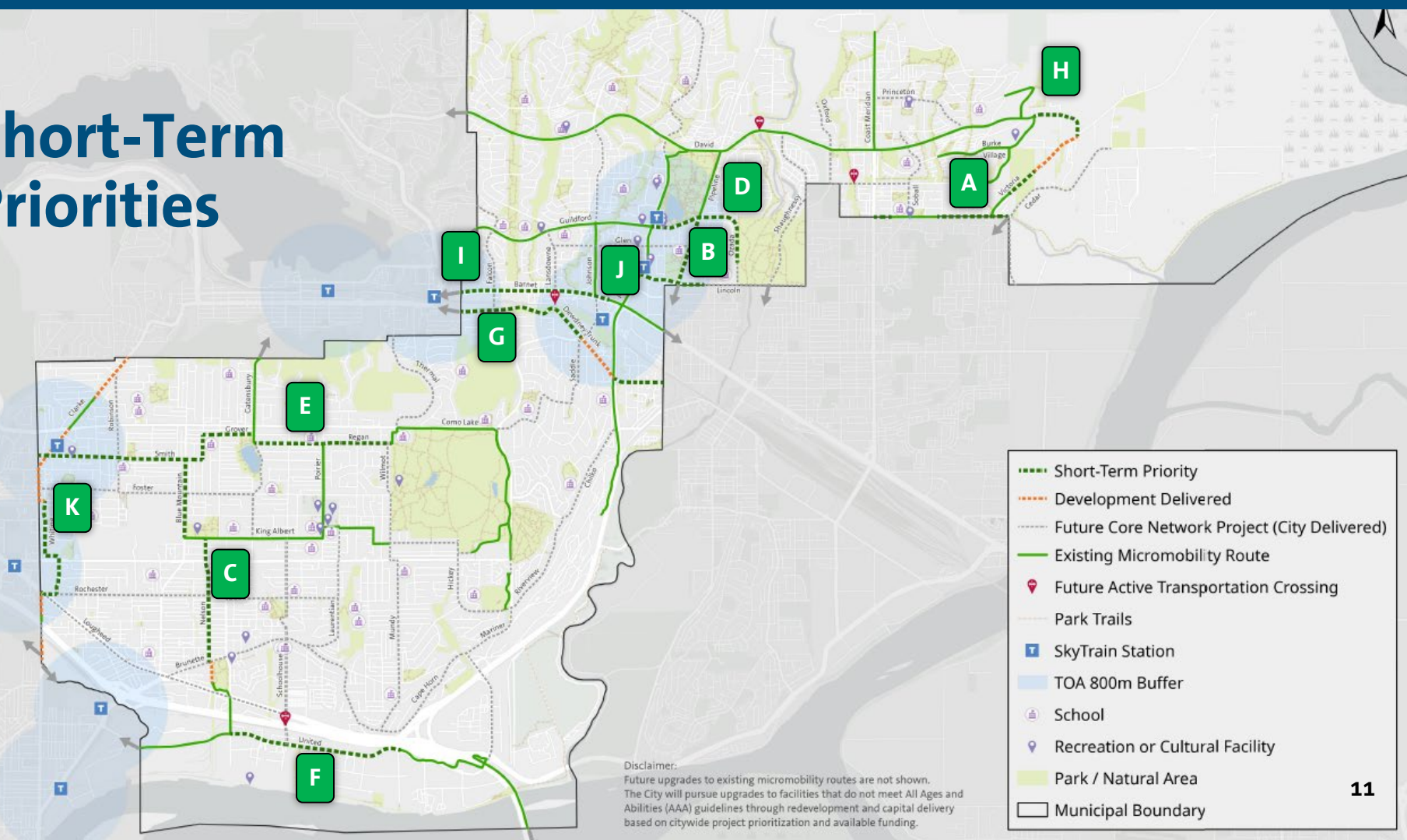
| Principles & Goal | Practical Approach |
|--|--|
| ✓ Connect Destinations Enable door to door trips | Most of the trip on the Core network |
| ✓ Remove Barriers Inclusive All Ages and Abilities facilities | Primarily City delivered with use of interim and ultimate measures with cost effective delivery options |
| ✓ Direct Routing Straight as possible | Limited amount of select routes without gaps |
| ✓ Regional Connectivity Comprehensive connections to planned network | Connections to existing or shorter term planned facilities |
| ✓ Goal - most residents/businesses are located no more than 400m | Maximize number of residents/businesses within 400m |



Core Micromobility Network



Short-Term Priorities



Disclaimer:
Future upgrades to existing micromobility routes are not shown.
The City will pursue upgrades to facilities that do not meet All Ages and Abilities (AAA) guidelines through redevelopment and capital delivery based on citywide project prioritization and available funding.



Short-Term Priorities

| | Corridor | From | To |
|---|--------------------------------------|----------------|--------------------|
| A | Victoria Drive | Coast Meridian | David |
| B | Pipeline Road | Guildford | Lincoln |
| C | Blue Mountain - Nelson – King Edward | Smith | Brunette |
| D | Guildford – Ozada | Pinetree | Maple Creek School |
| E | Smith – Regan - Como Lake | North | Como Lake |
| F | United Boulevard | King Edward | Fawcett |
| G | Dewdney Trunk Road | Port Moody | Westwood |
| H | David Avenue | Burke Village | Victoria |
| I | Barnet – Lougheed | Port Moody | Lansdowne |
| J | Lincoln Avenue | Pinetree | Kensal |
| K | Clarke – North - Whiting | Whiting | Westview |



Individual Project Implementation

Proposed Process

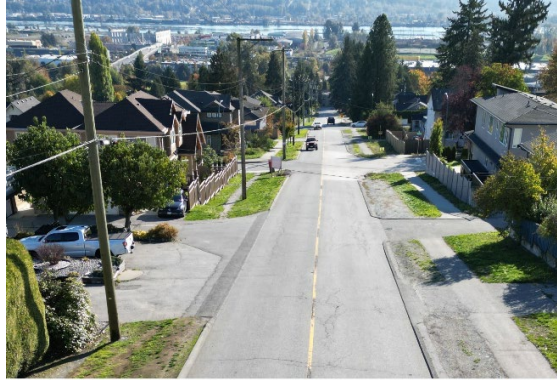




Existing Micromobility Projects in Planning Phase



**Pipeline Road
(south of Guildford Way)**



Nelson Street



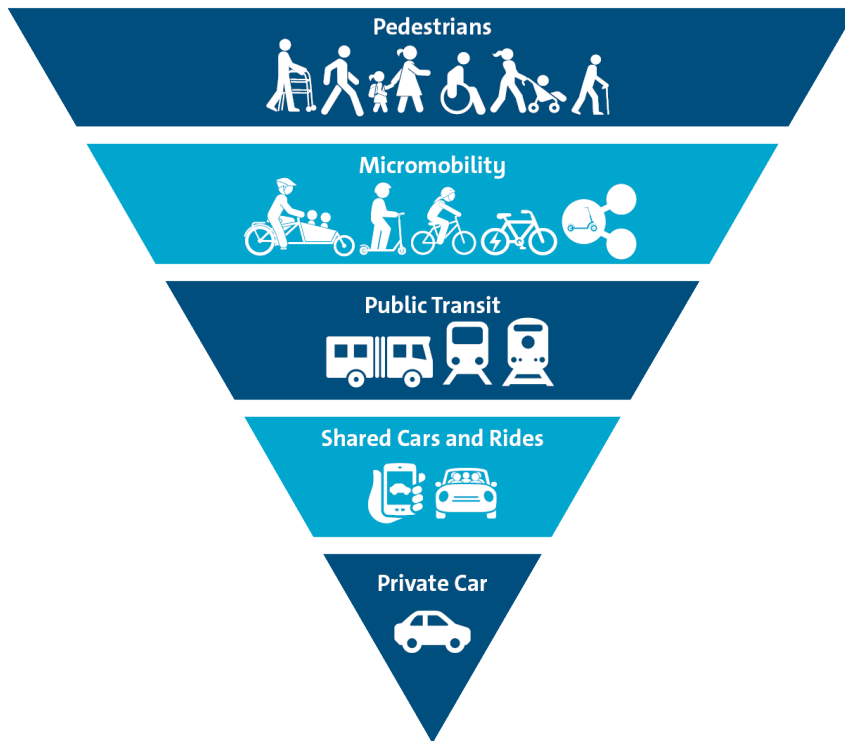
**King Albert Avenue
(final phase)**

Why Walking is the #1 Priority



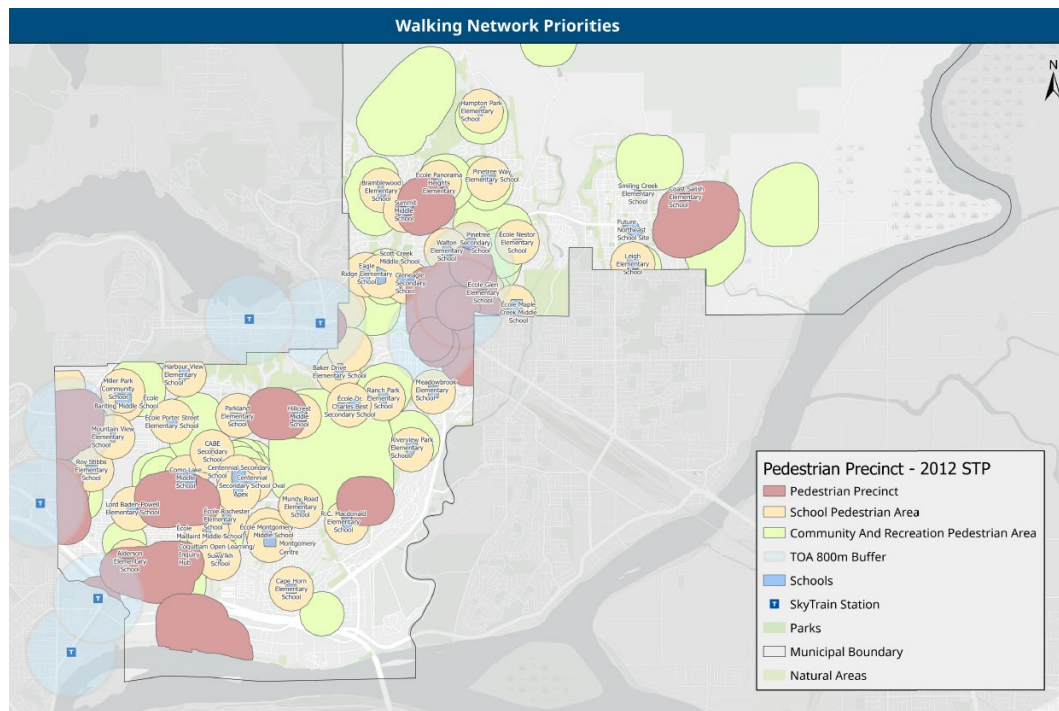
96%
Walk

**All trips begin and end as a
walk trip**



Walking Priority Principles

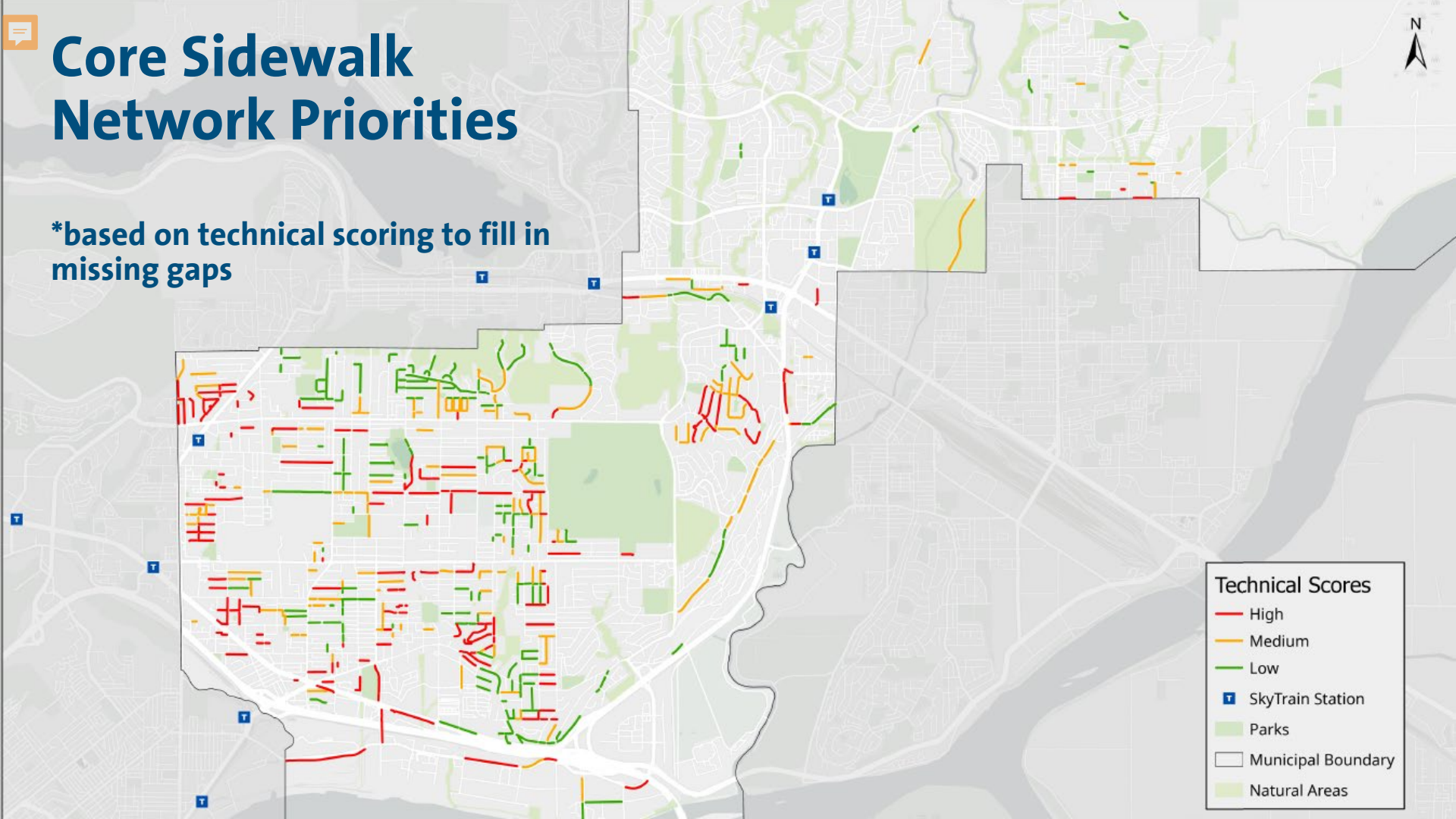
- **Sidewalks Both Sides**
 - City Centre and Neighbourhood Centres
 - Adjacent to Schools
 - Arterial/Collector Roads
- **Sidewalks One Side**
 - Adjacent to a Bus Stop
 - All Local Roads





Core Sidewalk Network Priorities

***based on technical scoring to fill in missing gaps**



Crosswalks & RRFB's

- **Crosswalks**

- Over 200 locations in City

- **Rectangular Rapid Flashing Beacons (RRFB)**

- Popular with residents
- Can improve driver compliance
- Currently 42 locations - high usage crossings

- **Costs & Annual Budget**

- Approximately \$15,000 per location
- 8-10 Locations per year – community interest in more



Curb Extensions

- **Benefits**

- Shortening Crossing Distance
- Slowing Vehicle Speeds
- Standard with New Development

- **Capital Program**

- Coordination with other Projects
- Often done with RRFB

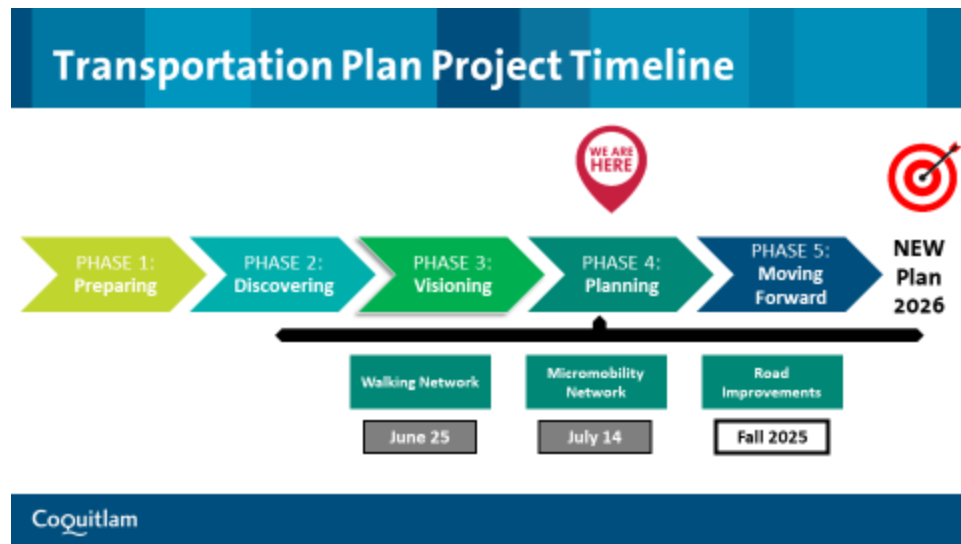
- **Costs & Funding**

- ~\$50,000 - \$100,000 per location
- \$100,000 annual budget
- 1-2 locations/year



What's Next

- **Fall 2025 Committee-in-Council**
 - Road Network Projects & Priorities
- **2026 Capital Budget Process**
 - Updated projects for consideration in Five Year Plan
- **Fall/Winter 2025 Strategic Priorities Standing Committee**
 - Provide Transportation Plan update on Policy Development & Short Term Priorities



Transportation Plan Project Timeline



PHASE 1:
Preparing

PHASE 2:
Discovering

PHASE 3:
Visioning

PHASE 4:
Planning

PHASE 5:
Moving
Forward

**NEW
Plan
2026**

Walking Network

June 25

Micromobility
Network

July 14

Road
Improvements

Fall 2025

Draft Short Term Walking Priorities

- Sidewalks

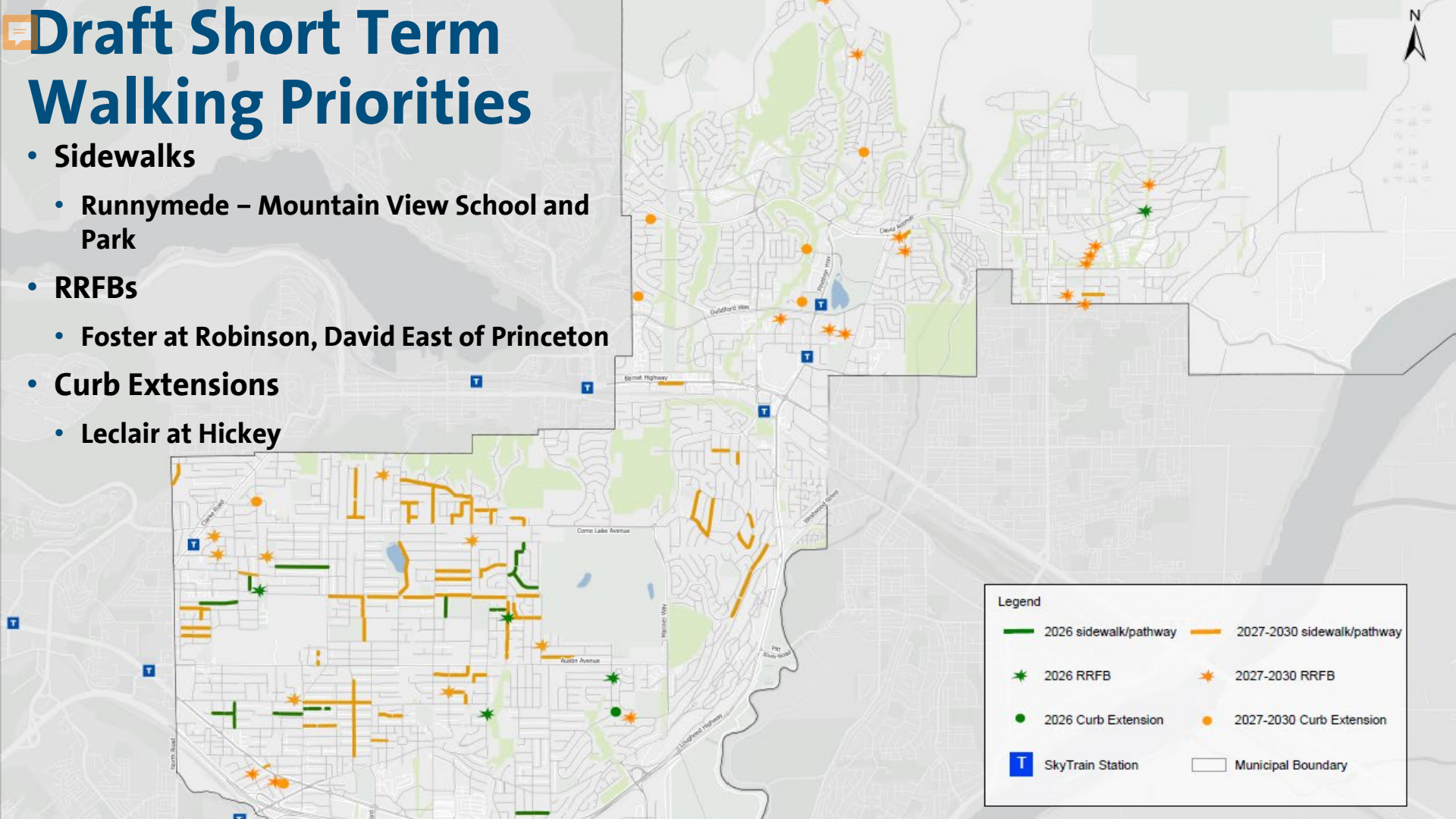
- Runnymede – Mountain View School and Park

- RRFBs

- Foster at Robinson, David East of Princeton

- Curb Extensions

- Leclair at Hickey



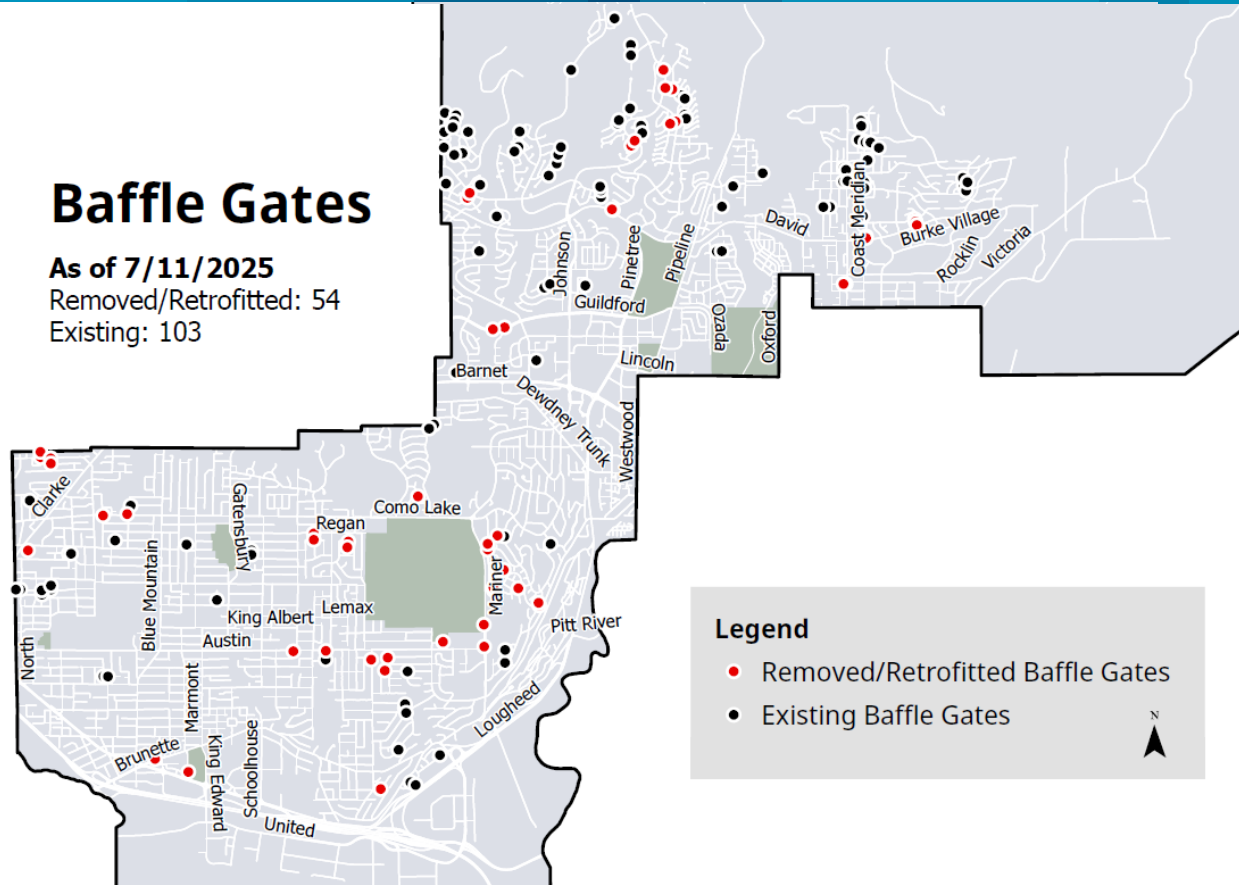
Baffle/Maze Gate Removals

Baffle Gates

As of 7/11/2025

Removed/Retrofitted: 54

Existing: 103



Accessibility Spot Improvement: Nelson Street off Mackin Park



Accessibility Spot Improvement: Off Chilko Drive



Accessibility Spot Improvement: Mariner Way Beside Mundy Park



Accessibility Spot Improvement: 884 Stanton Dr



Accessibility Spot Improvement: 2901 Waterford Pl



Accessibility Spot Improvement

633 Clarke Rd

