



Addendum No. 1

**City of Coquitlam
Tender 79057
New Traffic Signal and Intersection Improvements at Coast Meridian Road and
Highland Drive**

(Consists of 5 Pages)

Issue Date: July 30, 2024

Tenderers shall note the following changes:

REVISIONS:

1. REFER to: FORM OF TENDER

REMOVE: Appendix 1

REPLACE WITH: **REVISED** – Appendix 1 – **Revision No. 1**

2. REFER to: FORM OF TENDER and AGREEMENT

REVISED SUBSTANTIAL COMPLETION DATE: October 31, 2024

Substantial Completion Date Extension to October 31, 2024

3. REFER to: SUPPLEMENTARY CONTRACT SPECIFICATIONS

SECTION 03 30 20S (CONCRETE WALKS, CURBS, AND GUTTERS)

CLAUSE 1.4.3 (Measurement and Payment)

REMOVE: Payment for excavation and disposal of excavated material will all be considered as included under this item.

REPLACE WITH:

Payment for excavation and disposal of excavated material will be made under payment item, Common Excavation – Offsite Disposal, in the Schedule of Quantities and Prices.

4. REFER to: AGREEMENT, Schedule 2 (LIST OF DRAWINGS)

DELETE:

DMD & ASSOCIATES – ELECTRICAL CONSULTANTS LTD.	SHEET NO.	REVISION NO.	DATE
COAST MERIDIAN ROAD AND HIGHLAND DRIVE TRAFFIC SIGNAL SITE PLAN, LEGEND AND NOTES	3 OF 4	1	2024-07-12
COAST MERIDIAN ROAD AND HIGHLAND DRIVE TRAFFIC SIGNAL ELEVATIONS	4 OF 4	1	2024-07-12

REPLACE WITH:

DMD & ASSOCIATES – ELECTRICAL CONSULTANTS LTD.	SHEET NO.	REVISION NO.	DATE
COAST MERIDIAN ROAD AND HIGHLAND DRIVE TRAFFIC SIGNAL SITE PLAN, LEGEND AND NOTES	3 OF 4	2	2024-07-16

COAST MERIDIAN ROAD AND HIGHLAND DRIVE TRAFFIC SIGNAL ELEVATIONS	4 OF 4	2	2024-07-16
---	--------	---	------------

CONTRACTOR QUESTIONS AND CLARIFICATIONS:

- Q1) Would you please consider a later substantial completion date for this project? It appears some of the electrical contractors may be at capacity and will not be able to complete this project before September?
- A1) **All construction work shall be completed by the substantial completion date (October 31, 2024). Upon request by the Contractor, an exception may be granted for installation of any particular long delivery item.**
-

End of Addendum No. 1

Tenderers shall take into account the content of this Addendum in the preparation and submission of the Tender which will form part of the contract and should be acknowledged on the Tender form where indicated.

Upon submitting a Tender, Tenderers will be deemed to have received all addenda and considered the information for inclusion in the Tender submitted.

Issued by:

M. Pain
Procurement Manager
Email: bid@coquitlam.ca

REVISED - APPENDIX 1- Revision No.1
FORM OF TENDER

Contract 79057

New Traffic Signal and Intersection Improvements at Coast Meridian Road and Highland Drive

SCHEDULE OF QUANTITIES AND PRICES

(see paragraph 5.3.1 of the Instruction to Tenderers)

(All Tender and Contract Prices shall NOT include GST. GST will apply upon payment)

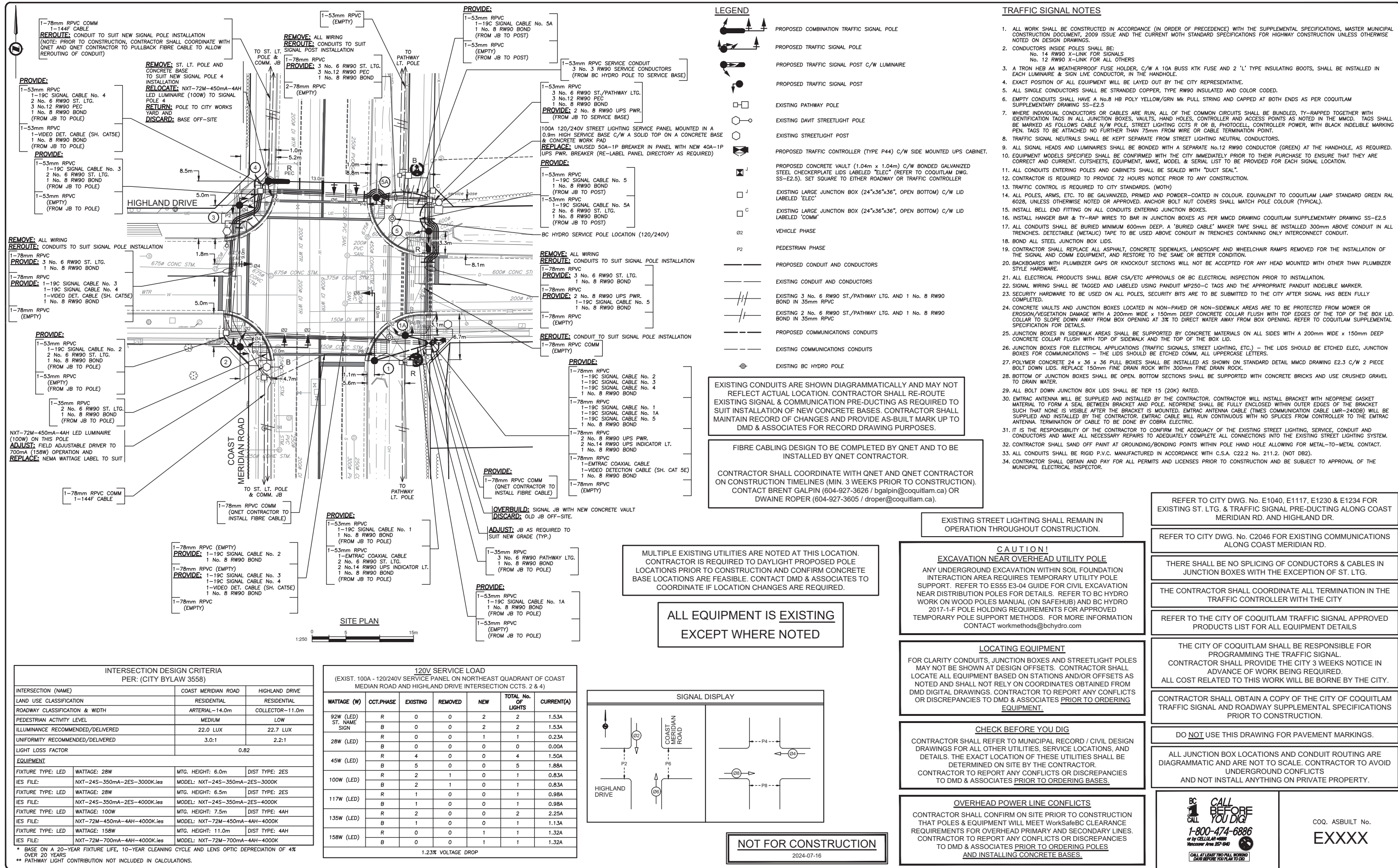
(Should there be any discrepancy in the information provided, the City's original file copy shall prevail)

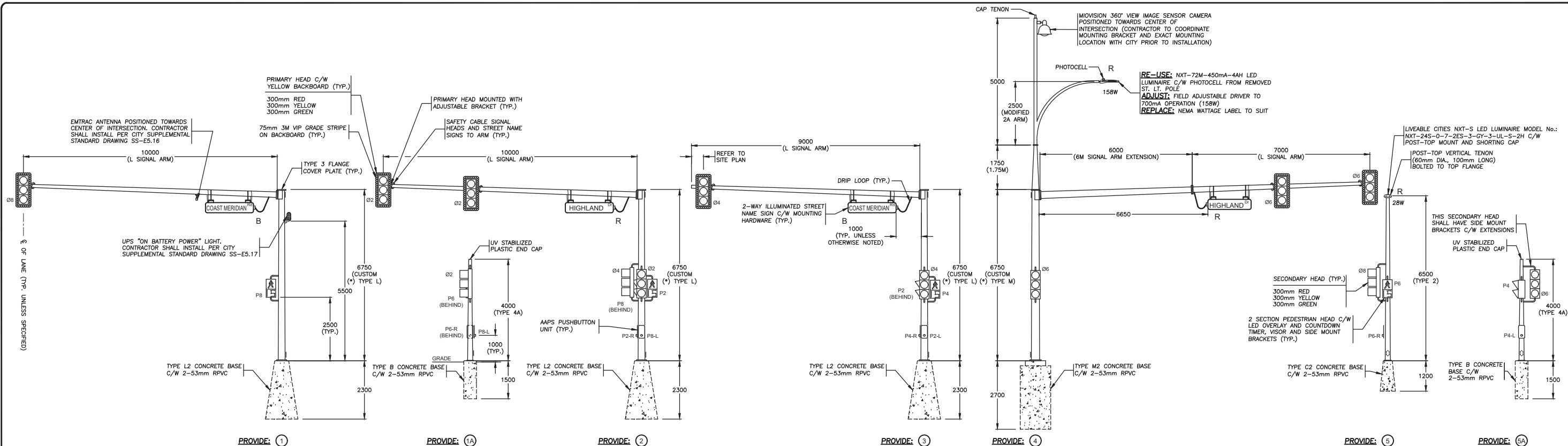
ITEM NO.	MMCD Ref. / (Supp. Specs)	DESCRIPTION	UNIT	QTY	UNIT PRICE	EXTENDED AMOUNT
1.00	01 55 00S	TRAFFIC CONTROL, VEHICLE ACCESS AND PARKING				
1.01	(1.5.1)	Traffic Control and Management	Incidental to Contract			
2.00	01 57 01S	ENVIRONMENTAL PROTECTION				
2.01	(1.6.1)	ESC Supply & Installation, Maintenance and Removal	Incidental to Contract			
3.00	31 11 01S	CLEARING AND GRUBBING				
3.01	(1.4.1)	Clearing and Grubbing	Incidental to Contract			
4.00	01 58 01S	PROJECT IDENTIFICATION				
4.01	(1.3.1)	1.2m x 1.2m Static Construction Zone Information Sign	each	4		
5.00	03 30 20S	CONCRETE WALKS, CURBS AND GUTTERS				
5.01	(1.4.3)	Concrete Barrier Curb and Gutter (MMCD C5) (incl. gravels)	lin.m	51		
5.02	(1.4.5)	Concrete Sidewalk, Multi-use Pathway, and Wheelchair Letdowns - 100mm thick - Broom Finished (incl. gravels); and as shown and described in the Contract Documents	sq.m	189		
5.03	(1.4.10)	Tactile Strip - Access Tile, Truncated Dome Pattern, Yellow color - Cast-in-place (removable)	lin.m	18		
6.00	31 24 13S	ROADWAY EXCAVATION, EMBANKMENT AND COMPACTION				
6.01	(1.8.4)	Remove and Dispose of Existing Concrete or asphalt flatwork (incl. offsite disposal)	sq.m	110		
6.02	(1.8.4)	Remove and Dispose of Existing Concrete Curb & Gutter (incl. offsite disposal)	lin.m	51		
6.03	(1.8.5)	Common Excavation including Offsite Disposal (Provisional)	cu.m	35		
6.04	(1.8.10)	Over Excavation (including offsite Disposal) - (Provisional)	cu.m	20		
7.00	32 01 16.7S	COLD MILLING				
7.01	(1.5.4)	Inlay Milling (Up to 50mm)	sq.m	656		
8.00	32 12 13.1S	ASPHALT TACK COAT				
8.01	1.5.1	Asphalt Tack Coat	sq.m	656		
9.00	32 12 16S	HOT-MIX ASPHALT CONCRETE PAVING				
9.01	(1.5.1)	Upper Course #1 Asphalt Concrete (50mm thick)	tonne	81		
10.00	32 17 23S	PAINTED PAVEMENT MARKINGS				
10.01	(1.5.3)	Permanent Thermoplastic Pavement Markings (extruded)	LS	1		
10.02	(1.5.4)	Relocate/modify existing sign post as shown on drawing	each	2		
10.03	(1.5.4.1)	Supply & Install Sign Structure - 37kg Trapezoidal Sign Base, Pole & Cap as per Coquitlam Drawings #SS-E11.1 & SS-E11.2 (New Traffic Signal Signs)	each	4		
11.00	33 40 01S	STORM SEWERS				
11.01	(1.6.5)	Catchbasin Leads c/w tie-in - 150mm SDR28 PVC (incl. Backfill & Permanent Trench Restoration - COQ-G4) (Sanded Stub)	lin.m	3		
12.00	33 44 01S	MANHOLES AND CATCHBASINS				
12.01	(1.5.2)	Side Inlet Catchbasin (COQ-S11A)	ea.	1		
12.02	1.5.4	Remove Existing Catchbasin and Dispose Offsite	ea.	1		
13.00	34 41 13S	TRAFFIC SIGNALS				
13.01	1.9	Traffic Signals (COMPLETE) - incl. intersection lighting	LS	1		

Total Tendered Price (exclude GST): _____

(Transfer the amount to Form of Tender Summary Page 1)

Name of Contractor: _____





ALL SIGNAL DISPLAY SHALL HAVE TUNNEL VISORS

ALL SIGNAL AND PEDESTRIAN DISPLAYS SHALL BE LED

USE CONDUCTOR #7 FOR SECONDARY PB RETURN. TAPE WHITE IN HANDHOLE AND CONTROLLER CABINET

THE CONTRACTOR SHALL SUPPLY AND INSTALL THE FOLLOWING MATERIALS. REFER TO THE CITY OF COQUITLAM TRAFFIC SIGNAL APPROVED PRODUCT LIST **AND** CONTACT BERNARD TUNG 604-927-6257 AT THE CITY OF COQUITLAM TRAFFIC DEPARTMENT FOR SPECIFIC MATERIAL DETAILS PRIOR TO ORDERING:

- 1) TRAFFIC CONTROLLER & CABINET C/W 3M GRAPHIC WRAP, COORDINATE DESIGN WITH THE CITY OF COQUITLAM
- 2) BOLT-ON UPS SYSTEM & CABINET C/W 3M GRAPHIC WRAP, COORDINATE DESIGN WITH THE CITY OF COQUITLAM
- 3) FIBRE OPTIC SWITCH. REFER TO CITY OF COQUITLAM APPROVED PRODUCT LIST
- 4) MIOVISION EQUIPMENT C/W MOUNTING BRACKET AND CABLE
- 5) EMTRAC ANTENNA, MOUNTING BRACKET AND CABLING (TERMINATIONS TO BE COMPLETED BY COBRA ELECTRIC)
- 6) POLARA NAVIGATOR IDS2 SYSTEM
- 7) ILLUMINATED STREET NAME SIGNS C/W MOUNTING HARDWARE

CONTRACTOR SHALL HIRE COBRA ELECTRIC TO COMPLETE THE EMTRAC CABLE TERMINATION. ALL COSTS SHALL BE BORNE BY THE CITY

CONTRACTOR WILL DELIVER CONTROLLER & UPS CABINETS, ALL CONTROLLER EQUIPMENT, EMTRAC PRE-EMPTION SYSTEM, VIDEO DETECTION SYSTEM AND POLARA SYSTEM TO THE CITY OF COQUITLAM FOR TESTING AND PROGRAMMING. UPON COMPLETION THE CONTRACTOR WILL PICK UP AND INSTALL EQUIPMENT AT SITE.

ON SITE CONTROLLER START UP AND COMMISSIONING WILL BE DONE BY THE CITY OF COQUITLAM TRAFFIC OPS STAFF, AND THE CONTRACTOR. (CONTRACTOR SHALL PROVIDE TRAFFIC CONTROL, QUALIFIED ELECTRICIAN(S) AND BUCKET TRUCK) ALL COSTS FOR THIS WORK SHALL BE BORNE BY THE CITY

NEW POLES DENOTED WITH (*) ARE TO BE CUSTOM. POLE LOADING ANALYSIS MUST BE COMPLETED BY THE POLE MANUFACTURER TO ENSURE POLE(S) ARE CHECKED FOR FATIGUE AND FATIGUE LOADING IN COMPLIANCE WITH CAN/CSA-S6-19 AND AASHTO 2013 SECTION 11 STANDARDS. CONTRACTOR IS REQUIRED TO PROVIDE SIGNED AND SEALED SHOP DRAWINGS FOR ALL NEW POLE(S).

ALL CONCRETE BASES SHALL HAVE ANCHOR BOLT PROJECTION CONFIRMED AGAINST CUSTOM SIGNAL POLES TO ENSURE THEY PROTRUDE FAR ENOUGH OUT OF THE CONCRETE BASE.

REFER TO THE CITY OF COQUITLAM TRAFFIC SIGNAL APPROVED PRODUCTS LIST FOR ALL EQUIPMENT DETAILS

THE CITY OF COQUITLAM SHALL BE RESPONSIBLE FOR PROGRAMMING THE TRAFFIC SIGNAL. CONTRACTOR SHALL PROVIDE THE CITY 3 WEEKS NOTICE IN ADVANCE OF WORK BEING REQUIRED. ALL COST RELATED TO THIS WORK WILL BE BORNE BY THE CITY.

THE CONTRACTOR SHALL COORDINATE ALL TERMINATIONS IN THE TRAFFIC CONTROLLER WITH THE CITY

CONTRACTOR SHALL OBTAIN A COPY OF THE CITY OF COQUITLAM TRAFFIC SIGNAL AND ROADWAY SUPPLEMENTAL SPECIFICATIONS PRIOR TO CONSTRUCTION.

NOT FOR CONSTRUCTION

2024-07-16

CONDUCTOR COLOUR CODE (FROM HANDHOLE TO SIGNAL)		
ITEM	SIGNAL SECTION	CONDUCTOR COLOUR
#2	RED YELLOW GREEN	RED YELLOW BLUE
#4	RED YELLOW GREEN	RED BROWN BLUE
#6	RED YELLOW GREEN	RED YELLOW (RED T.T.) BLUE
#8	RED YELLOW GREEN	RED BROWN (ORANGE T.T.) BLUE
P2	DON'T WALK WALK PUSH BUTTON	YELLOW BLUE PURPLE/PURPLE (YELLOW T.T.)
P4	DON'T WALK WALK PUSH BUTTON	BROWN BLUE PURPLE/PURPLE (BTOWN T.T.)
P6	DON'T WALK WALK PUSH BUTTON	YELLOW (RED T.T.) BLUE PURPLE/PURPLE (RED T.T.)
P8	DON'T WALK WALK PUSH BUTTON	BROWN (ORANGE T.T.) BLUE PURPLE/PURPLE (ORANGE T.T.)
ITEM	CIRCUITS	CONDUCTOR COLOUR
SIGNAL NEUTRAL	NEUTRAL	WHITE
CONTROLLER/UPS	POWER	BLACK
STREET LIGHTING	POWER POWER	BLACK RED
PANEL SUPPLY	POWER POWER	BLACK RED
PHOTOCELL	POWER	BLACK
	SWITCH LEG	RED
NEUTRAL	NEUTRAL	WHITE
GROUND/BOND	GROUND/BOND	GREEN

NOTE: T.T. DENOTES TAPE TRACER.