



**Addendum No. 1**  
**City of Coquitlam**  
**Tender No. 51162-1**  
**Sheffield Avenue Subdivision**  
(Consists of 9 Pages)

Issue Date: March 17, 2025

Tenderers shall note the following changes:

**Revisions**

**1. Refer to: AGREEMENT, Schedule 2**

**ADD: Appendix D – BC Hydro, Telus, and Shaw Redlines**

**Contractor Questions/Clarifications**

Q1.) Item 12.01 notes 150mm of topsoil, yet drawing 04 shows 300mm. Please clarify.

**A1.) Topsoil depth shall be 150mm.**

Q2.) Please provide the drawings for the BC Hydro, Telus, and Shaw works.

**A2.) Refer to Appendix D.**

---

***End of Addendum No. 1***

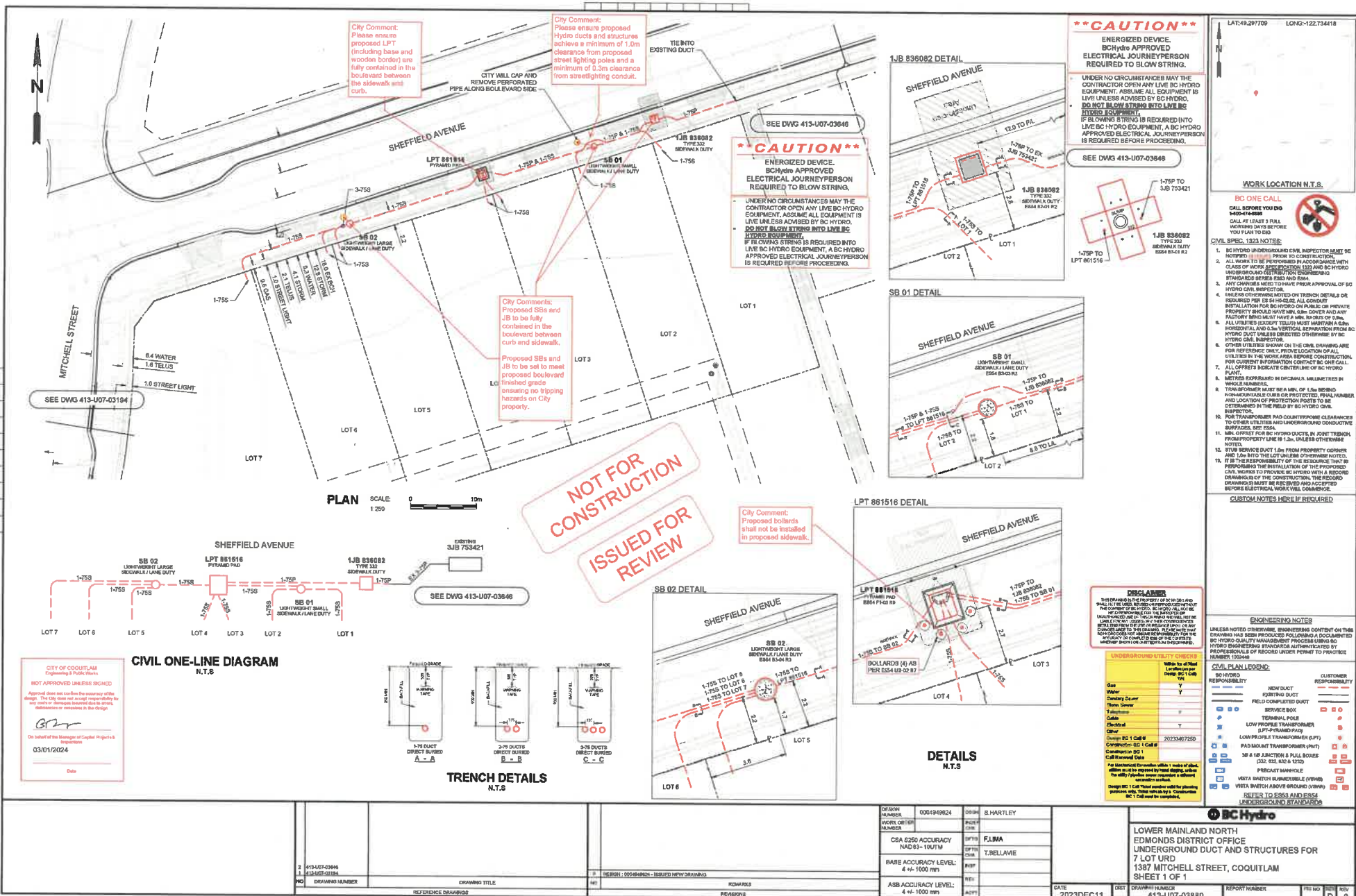
**Tenderers shall take into account the content of this Addendum in the preparation and submission of the Tender which will form part of the contract and shall be acknowledged on the Tender Form, Item 1.**

Upon submitting a Tender, Tenderers will be deemed to have received notice of all Addenda that are posted on the City's website and deemed to have considered the information for inclusion in the Tender submitted.

*Issued by:*

Mark Pain  
Manager Procurement  
Email: [bid@coquitlam.ca](mailto:bid@coquitlam.ca)

***Appendix D -  
BC Hydro, Telus, and Shaw Redlines***



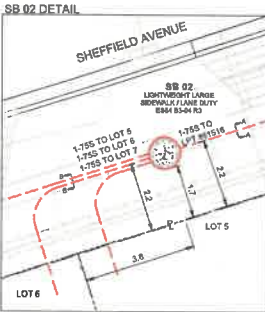
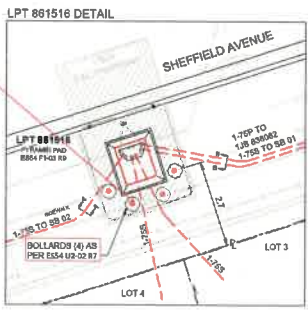
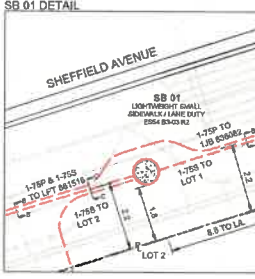
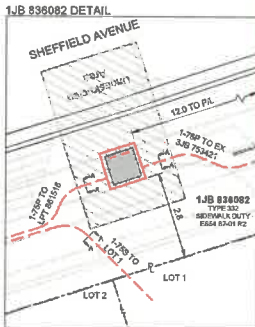
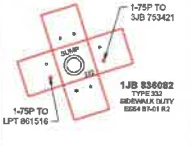
**\*\*\*CAUTION\*\*\***  
**ENERGIZED DEVICE.**  
 BC Hydro APPROVED ELECTRICAL JOURNEYPERSON REQUIRED TO BLOW STRINGS.  
 UNDER NO CIRCUMSTANCES MAY THE CONTRACTOR OPEN ANY LIVE BC HYDRO EQUIPMENT. ASSUME ALL EQUIPMENT IS LIVE UNLESS ADVISED BY BC HYDRO. DO NOT BLOW STRINGS INTO LIVE BC HYDRO EQUIPMENT.  
 IF BLOWING STRINGS IS REQUIRED INTO LIVE BC HYDRO EQUIPMENT, A BC HYDRO APPROVED ELECTRICAL JOURNEYPERSON IS REQUIRED BEFORE PROCEEDING.

**\*\*\*CAUTION\*\*\***  
**ENERGIZED DEVICE.**  
 BC Hydro APPROVED ELECTRICAL JOURNEYPERSON REQUIRED TO BLOW STRINGS.  
 UNDER NO CIRCUMSTANCES MAY THE CONTRACTOR OPEN ANY LIVE BC HYDRO EQUIPMENT. ASSUME ALL EQUIPMENT IS LIVE UNLESS ADVISED BY BC HYDRO. DO NOT BLOW STRINGS INTO LIVE BC HYDRO EQUIPMENT.  
 IF BLOWING STRINGS IS REQUIRED INTO LIVE BC HYDRO EQUIPMENT, A BC HYDRO APPROVED ELECTRICAL JOURNEYPERSON IS REQUIRED BEFORE PROCEEDING.

City Comments:  
 Proposed SBs and JB to be set to meet proposed boulevard finished grade ensuring no tripping hazards on City property.

City Comment:  
 Please ensure proposed LPT (including base and wooden border) are fully contained in the boulevard between the sidewalk and curb.

**NOT FOR CONSTRUCTION**  
**ISSUED FOR REVIEW**



LAT:49.297706 LONG:-122.734418

**WORK LOCATION N.T.S.**

**BC ONE CALL**  
 CALL BEFORE YOU DIG  
 1-800-474-8888  
 CALL AT LEAST 3 FULL WORKING DAYS BEFORE YOU PLAN TO DIG

**CIVIL SPEC. 1323 NOTES:**

1. BC HYDRO UNDERGROUND CIVIL INSPECTOR MUST BE NOTIFIED 48 HRS PRIOR TO CONSTRUCTION.
2. ALL WORK TO BE PERFORMED IN ACCORDANCE WITH CLASS OF WORK SPECIFICATION 1323 AND BC HYDRO UNDERGROUND ELECTRICAL ENGINEERING STANDARDS SERIES E530 AND E540.
3. ANY CHANGES MUST HAVE PRIOR APPROVAL OF BC HYDRO CIVIL INSPECTOR.
4. UNLESS OTHERWISE NOTED ON TRENCH DETAILS OR REQUIRED PER E5 314-022, ALL CONDUIT INSTALLATION FOR BC HYDRO ON PUBLIC OR PRIVATE PROPERTY SHOULD HAVE MIN. 50mm COVER AND ANY FACTORY BONDING MUST HAVE A MIN. 200mm OF CONDUIT.
5. ALL UTILITIES (EXCEPT TELLS) MUST MAINTAIN A MIN. HORIZONTAL AND 0.5m VERTICAL SEPARATION FROM BC HYDRO DUCT UNLESS DIRECTED OTHERWISE BY BC HYDRO CIVIL INSPECTOR.
6. OTHER UTILITIES SHOWN ON THE CIVIL DRAWING ARE FOR REFERENCE ONLY. PRIOR LOCATION OF ALL UTILITIES IN THE WORK AREA BEFORE CONSTRUCTION. FOR CURRENT INFORMATION CONTACT BC ONE CALL.
7. ALL OFFSETS INDICATE CENTERLINE OF BC HYDRO PILE-UP.
8. METERS EXPRESSED IN DECIMALS, MILLIMETERS IN WHOLE NUMBERS.
9. TRANSFORMER MUST BE A MIN. OF 1.5m BEHIND HOUSING AND 0.5m FROM PROTECTED. FINAL NUMBER AND LOCATION OF PROTECTION POSTS TO BE DETERMINED IN THE FIELD BY BC HYDRO CIVIL INSPECTOR.
10. FOR TRANSFORMER PAD COUNTERPOISE CLEARANCES TO OTHER UTILITIES AND UNDERGROUND CONDUCTIVE BODIES, SEE E53A.
11. MIN. OFFSET FOR BC HYDRO DUCTS IN JOINT TRENCHES FROM PROPERTY LINE IS 1.5m UNLESS OTHERWISE NOTED.
12. 375V SERVICE DUCT 1.5m FROM PROPERTY CORNER AND 2.0m INTO THE LOT LINE UNLESS OTHERWISE NOTED. IT IS THE RESPONSIBILITY OF THE RESOURCE THAT IS TO PROVIDE THE INSTALLATION OF THE PROPOSED DRAWINGS BY THE CONTRACTOR. THE RECORD DRAWINGS MUST BE SET AND ACCEPTED BEFORE ELECTRICAL WORK WILL COMMENCE.

**CUSTOM NOTES: HERE IF REQUIRED**

**DISCLAIMER**  
 THE INFORMATION ON THIS DRAWING IS THE PROPERTY OF BC HYDRO. IT IS TO BE USED ONLY FOR THE PROJECT AND SITE SPECIFICALLY IDENTIFIED. UNLESS OTHERWISE NOTED, THE INFORMATION ON THIS DRAWING IS THE PROPERTY OF BC HYDRO. THE INFORMATION ON THIS DRAWING IS NOT TO BE USED FOR ANY OTHER PROJECT OR SITE WITHOUT THE WRITTEN PERMISSION OF BC HYDRO. THE INFORMATION ON THIS DRAWING IS NOT TO BE USED FOR ANY OTHER PROJECT OR SITE WITHOUT THE WRITTEN PERMISSION OF BC HYDRO.

**UNDERGROUND UTILITY CHECKS**

Utility	Location per map	Verify in field
Gas	Y	Y
Water	Y	Y
Electric	Y	Y
Other	Y	Y

**ENGINEERING NOTES**  
 UNLESS NOTED OTHERWISE, ENGINEERING CONTENT ON THIS DRAWING HAS BEEN PROVIDED FOLLOWING A DOCUMENTED BC HYDRO QUALITY MANAGEMENT PROCESS USING BC HYDRO ENGINEERING STANDARDS AUTHENTICATED BY PROFESSIONALS OF RECORD UNDER PROJECT NUMBER 100448

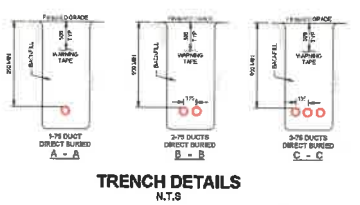
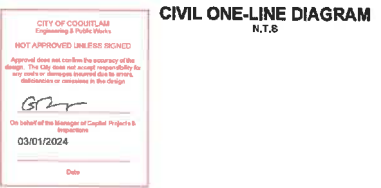
**CIVIL PLAN LEGEND:**

Symbol	DESCRIPTION	CUSTOMER RESPONSIBILITY
Blue dashed line	NEW DUCT	Y
Blue solid line	EXISTING DUCT	N
Blue dashed line with dots	FIELD COMPLETED DUCT	N
Blue dashed line with circles	SERVICE BOX	N
Blue dashed line with triangles	TERMINAL POLE	N
Blue dashed line with squares	LOW PROFILE TRANSFORMER	N
Blue dashed line with diamonds	LPT (PYRAMID PILE-UP)	N
Blue dashed line with stars	LOW PROFILE TRANSFORMER (LPT)	N
Blue dashed line with crosses	PAD MOUNT TRANSFORMER (LPT)	N
Blue dashed line with pluses	SB & SP JUNCTION & FULL BOXES (E5 314, E54 & E50)	N
Blue dashed line with asterisks	SB & SP JUNCTION & FULL BOXES (E5 314, E54 & E50)	N
Blue dashed line with hash	PRECAST MANHOLE	N
Blue dashed line with percent	VERTA BATTERY SUBMERGIBLE OVERHEAD	N
Blue dashed line with ampersand	VERTA BATTERY AND/OR BATTERY COVER	N

**REFER TO E535 AND E534 UNDERGROUND STANDARDS**

**BC Hydro**  
 LOWER MAINLAND NORTH  
 EDMONDS DISTRICT OFFICE  
 UNDERGROUND DUCT AND STRUCTURES FOR  
 7 LOT URD  
 1387 MITCHELL STREET, COQUITLAM  
 SHEET 1 OF 1

DATE: 2023DEC11  
 DRAWING NUMBER: 413-U07-03880  
 REPORT NUMBER: [blank]  
 REV NO: [blank]  
 REV: [blank]



**CITY OF COQUITLAM**  
 Engineering & Public Works  
 NOT APPROVED UNLESS SIGNED  
 Approved does not confirm the accuracy of the design. The City does not accept responsibility for any costs or damages incurred due to errors, omissions or omissions in the design.  
 On behalf of the Manager of Capital Projects & Investments  
 03/01/2024  
 Date

DESIGN: [blank]  
 CHECKED: [blank]  
 DRAWING NUMBER: 413-U07-03880  
 SHEET 1 OF 1

DESIGN NUMBER: 000494624	DESIGNER: S.HARTLEY	DATE: 2023DEC11
WORK ORDER NUMBER: CSA 8250 ACCURACY NAD 83 - 10UTM	PROJECT CODE: F.LIMA	DRAWN BY: T.BELLAVE
BASE ACCURACY LEVEL: 4 +/- 1000 mm	PROJECT CODE: T.BELLAVE	DATE: 2023DEC11
ASS ACCURACY LEVEL: 4 +/- 1000 mm	PROJECT CODE: T.BELLAVE	DATE: 2023DEC11



MULTI-USE PATHWAY ILLUMINANCE DESIGN CRITERIA		
STREET NAME(S)	SHEFFIELD AVENUE M.U.P.	
PEDESTRIAN ACTIVITY	LOW	
LUMINAIRE TYPE	4.6m PATHWAY POLE - 25W LED TYPE II DIST.	
LUMINAIRE PRODUCT CODE	ARC-EDG-246-DA-02-E-1A-350-40K (25W LED)	
IES FILE	246-E.ies	
LUMINAIRE COLOUR TEMPERATURE	4000K	
DESIGN CRITERIA	DESIGN REQUIREMENTS	DESIGN ACHIEVED
LUMINANCE LEVEL (AVG.)	≥ 4.0	7.02
LUMINANCE UNIFORMITY RATIO (AVG./MIN.)	≤ 4.0	3.90

MULTI-USE PATHWAY ILLUMINANCE DESIGN CRITERIA		
STREET NAME(S)	LOFTING STREET M.U.P.	
PEDESTRIAN ACTIVITY	MEDIUM	
LUMINAIRE TYPE	4.6m PATHWAY POLE - 25W LED TYPE II DIST.	
LUMINAIRE PRODUCT CODE	ARC-EDG-246-DA-02-E-1A-350-40K (25W LED)	
IES FILE	246-E.ies	
LUMINAIRE COLOUR TEMPERATURE	4000K	
DESIGN CRITERIA	DESIGN REQUIREMENTS	DESIGN ACHIEVED
LUMINANCE LEVEL (AVG.)	≥ 5.0	8.44
LUMINANCE UNIFORMITY RATIO (AVG./MIN.)	≤ 4.0	2.95

120V SERVICE LOAD ON LOFTING STREET (40A - 120/240V SERVICE PANEL)						
WATAGE (W)	CCT. PHASE	EXISTING	REMOVED	PROPOSED	TOTAL No. OF LOADS	TOTAL CONDUCTOR LENGTH (m)
53W	R	-	-	10	10	1706
	B	-	-	10	10	
	Y	-	-	8	8	
86W	R	-	-	5	5	
	B	-	-	17	11	
25W	B	-	-	14	8	

CALCULATED VOLTAGE DROP: 1.41% AT STA. 2+803.3

COQ AS BUILT  
E1434-02  
C2121-02

SEE E1434-09 FOR STL DETAILS

**NOTICE:**  
HYDRO, GAS AND TELEPHONE ARE NOT LOCATED ON THE CITY OF COQUITLAM AS-BUILTS. CONTACT THE PROVIDER TO OBTAIN GAS AND TELLS FOR CURRENT AS-BUILT PREPARING TO INSTALL SERVICE.

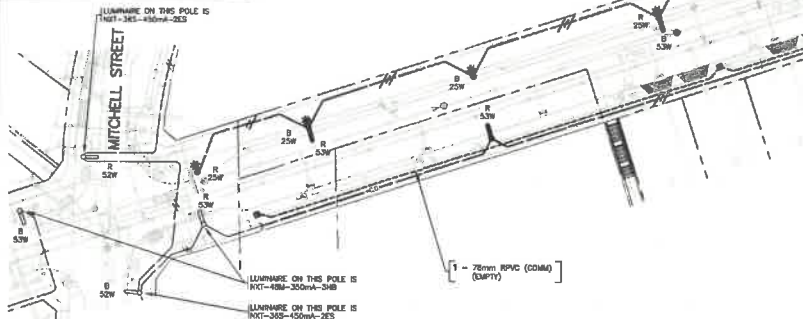
**NOTE:**  
LOCATION OF EXISTING UTILITIES SHOWN ARE APPROXIMATE ONLY AND SHOULD BE CHECKED BY A PIPE LOCATOR AND MARSHAL DIGGING. ALL EXISTING EXPOSURE STRUCTURES ARE NOT NECESSARILY SHOWN.

**THIS PRELIMINARY COPY IS SUPPLIED BY THE CITY OF COQUITLAM FOR GENERAL INFORMATION ONLY AND THE ACCURACY OF INFORMATION CONTAINED ON THIS DOCUMENT IS NOT GUARANTEED BY THE CITY.**

REFER TO PRIMARY ENGINEERING PROJECT No. SL-02504-TRAIL FOR STREETLIGHT INFORMATION IN THE TRAIL

MATCH LINE SEE SHEET 2

REFER TO PRIMARY ENGINEERING DRAWING No. DB-07452 SL FOR STREETLIGHT INFORMATION ON SHEFFIELD AVENUE & MITCHELL STREET



INTERSECTION ILLUMINANCE DESIGN CRITERIA		
STREET NAME(S)	LOFTING STREET & FUTURE ROAD	
PEDESTRIAN ACTIVITY	MEDIUM	
ROAD CLASSIFICATION	COLLECTOR - COLLECTOR	
LUMINAIRE TYPE	9.14m DAWT POLE - 60W LED TYPE 3-B DIST. 7.62m DAWT POLE - 60W LED TYPE 3-B DIST.	
LUMINAIRE PRODUCT CODE	NXT-48M-0-7-388-4-0Y-3-1L-5-2H (60W LED)	
IES FILE	NXT-48M-0-7-388-4-0Y-3-1L-5-2H (60W LED)	
LUMINAIRE COLOUR TEMPERATURE	4000K	
DESIGN CRITERIA	DESIGN REQUIREMENTS	DESIGN ACHIEVED
LUMINANCE LEVEL (AVG. LUX)	≥ 18.0	19.01
LUMINANCE UNIFORMITY RATIO (AVG./MIN.)	≤ 4.0	1.40

STREETLIGHTING LUMINANCE DESIGN CRITERIA		
STREET NAME(S)	LOFTING STREET - SOUTH OF SHEFFIELD AVENUE	
PEDESTRIAN ACTIVITY	MEDIUM	
ROAD CLASSIFICATION	COLLECTOR	
LUMINAIRE TYPE	9.14m DAWT POLE - 60W LED TYPE 3-B DIST. 9.14m DAWT POLE - 60W LED TYPE 3-B DIST.	
LUMINAIRE PRODUCT CODE	NXT-48M-0-7-388-4-0Y-3-1L-5-2H (60W LED)	
IES FILE	NXT-48M-0-7-388-4-0Y-3-1L-5-2H (60W LED)	
LUMINAIRE COLOUR TEMPERATURE	4000K	
DESIGN CRITERIA	DESIGN REQUIREMENTS	DESIGN ACHIEVED
LUMINANCE LEVEL (AVG.)	≥ 0.8	0.64
LUMINANCE UNIFORMITY RATIO (AVG./MIN.)	≤ 3.5	1.70
LUMINANCE UNIFORMITY RATIO (MAX/MIN)	≤ 6.0	3.00
VEILING LUMINANCE RATIO (VMAX/AVG)	≤ 0.4	0.29

STREETLIGHTING LUMINANCE DESIGN CRITERIA		
STREET NAME(S)	SHEFFIELD AVENUE	
PEDESTRIAN ACTIVITY	LOW	
ROAD CLASSIFICATION	COLLECTOR	
LUMINAIRE TYPE	7.62m DAWT POLE - 60W LED TYPE 3-B DIST. 7.62m DAWT POLE - 60W LED TYPE 3-B DIST.	
LUMINAIRE PRODUCT CODE	NXT-48M-0-7-388-4-0Y-3-1L-5-2H (60W LED)	
IES FILE	NXT-48M-0-7-388-4-0Y-3-1L-5-2H (60W LED)	
LUMINAIRE COLOUR TEMPERATURE	4000K	
DESIGN CRITERIA	DESIGN REQUIREMENTS	DESIGN ACHIEVED
LUMINANCE LEVEL (AVG.)	≥ 0.4	0.53
LUMINANCE UNIFORMITY RATIO (AVG./MIN.)	≤ 4.0	2.80
LUMINANCE UNIFORMITY RATIO (MAX/MIN)	≤ 6.0	6.50
VEILING LUMINANCE RATIO (VMAX/AVG)	≤ 0.4	0.39

INTERSECTION ILLUMINANCE DESIGN CRITERIA		
STREET NAME(S)	SHEFFIELD AVENUE & MITCHELL STREET	
PEDESTRIAN ACTIVITY	LOW	
ROAD CLASSIFICATION	COLLECTOR - COLLECTOR	
LUMINAIRE TYPE	7.62m DAWT POLE - 60W LED TYPE 3-B DIST. 7.62m DAWT POLE - 60W LED TYPE 3-B DIST.	
LUMINAIRE PRODUCT CODE	NXT-48M-0-7-388-4-0Y-3-1L-5-2H (60W LED)	
IES FILE	NXT-48M-0-7-388-4-0Y-3-1L-5-2H (60W LED)	
LUMINAIRE COLOUR TEMPERATURE	4000K	
DESIGN CRITERIA	DESIGN REQUIREMENTS	DESIGN ACHIEVED
LUMINANCE LEVEL (AVG. LUX)	≥ 12.0	12.60
LUMINANCE UNIFORMITY RATIO (AVG./MIN.)	≤ 4.0	3.71

INTERSECTION ILLUMINANCE DESIGN CRITERIA		
STREET NAME(S)	SHEFFIELD AVENUE & LOFTING STREET	
PEDESTRIAN ACTIVITY	MEDIUM	
ROAD CLASSIFICATION	COLLECTOR - COLLECTOR	
LUMINAIRE TYPE	9.14m DAWT POLE - 60W LED TYPE 3-B DIST. 7.62m DAWT POLE - 60W LED TYPE 3-B DIST.	
LUMINAIRE PRODUCT CODE	NXT-48M-0-7-388-4-0Y-3-1L-5-2H (60W LED)	
IES FILE	NXT-48M-0-7-388-4-0Y-3-1L-5-2H (60W LED)	
LUMINAIRE COLOUR TEMPERATURE	4000K	
DESIGN CRITERIA	DESIGN REQUIREMENTS	DESIGN ACHIEVED
LUMINANCE LEVEL (AVG. LUX)	≥ 18.0	19.83
LUMINANCE UNIFORMITY RATIO (AVG./MIN.)	≤ 4.0	1.43

**PRIMARY**  
2700-174-6888 OR BY  
CRUISE@PRIM.COM  
VANCOUVER AREA  
257-1840

CALL AT LEAST TWO FULL WORKING DAYS BEFORE YOU PLAN TO DIG

BC ONE CALL  
CALL BEFORE YOU DIG  
1-800-474-6888 OR BY  
CRUISE@PRIM.COM  
VANCOUVER AREA  
257-1840



REVISIONS	
R7	ISSUED FOR RECORD 2022/03/02
R8	SHEFFIELD AND ROAD A LIGHTS UPDATED, RE-PC 2020/11/15
R9	ISSUED FOR CONSTRUCTION 2020/05/28
R4	ISSUED FOR REVIEW 2020/04/13
R3	ISSUED FOR REVIEW 2020/02/14
R2	ISSUED FOR REVIEW 2019/11/07
R1	ISSUED FOR REVIEW 2019/11/04

CITY OF COQUITLAM

SMILING CREEK NEIGHBORHOOD - PARCEL 16A STREET LIGHTING

CLIENT

PROJECT

SCALE: 0 1:500 25

DESIGN BY: SB  
PLOT DATE: 2022-03-03

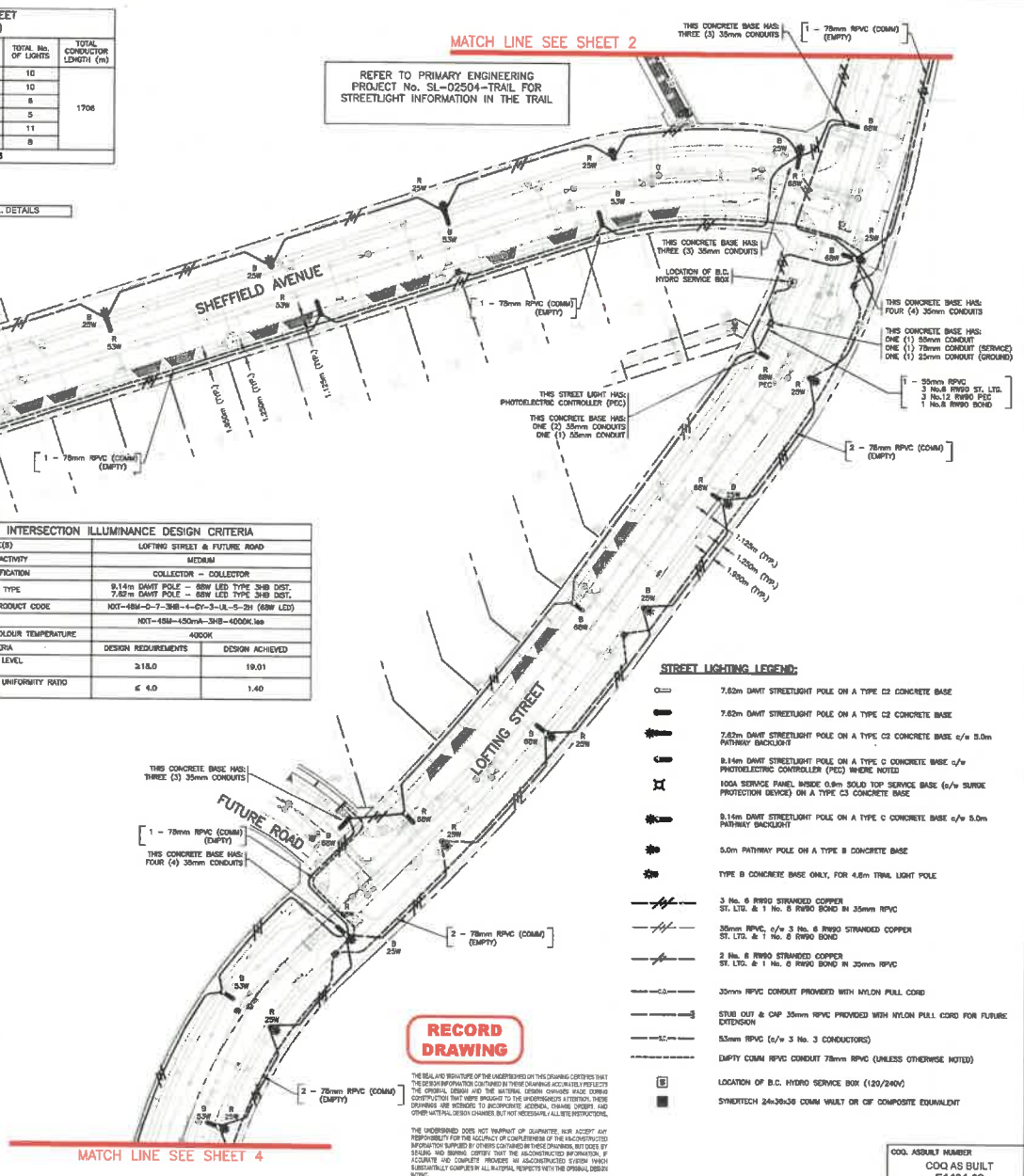
DRAWN BY: YH  
PLOT TIME: 12:28:20

COQ AS BUILT  
E1434-02  
C2121-02

DRAWING TITLE: Street Lighting Site Plan Sheet 3

DRAWING NUMBER: SL-02504

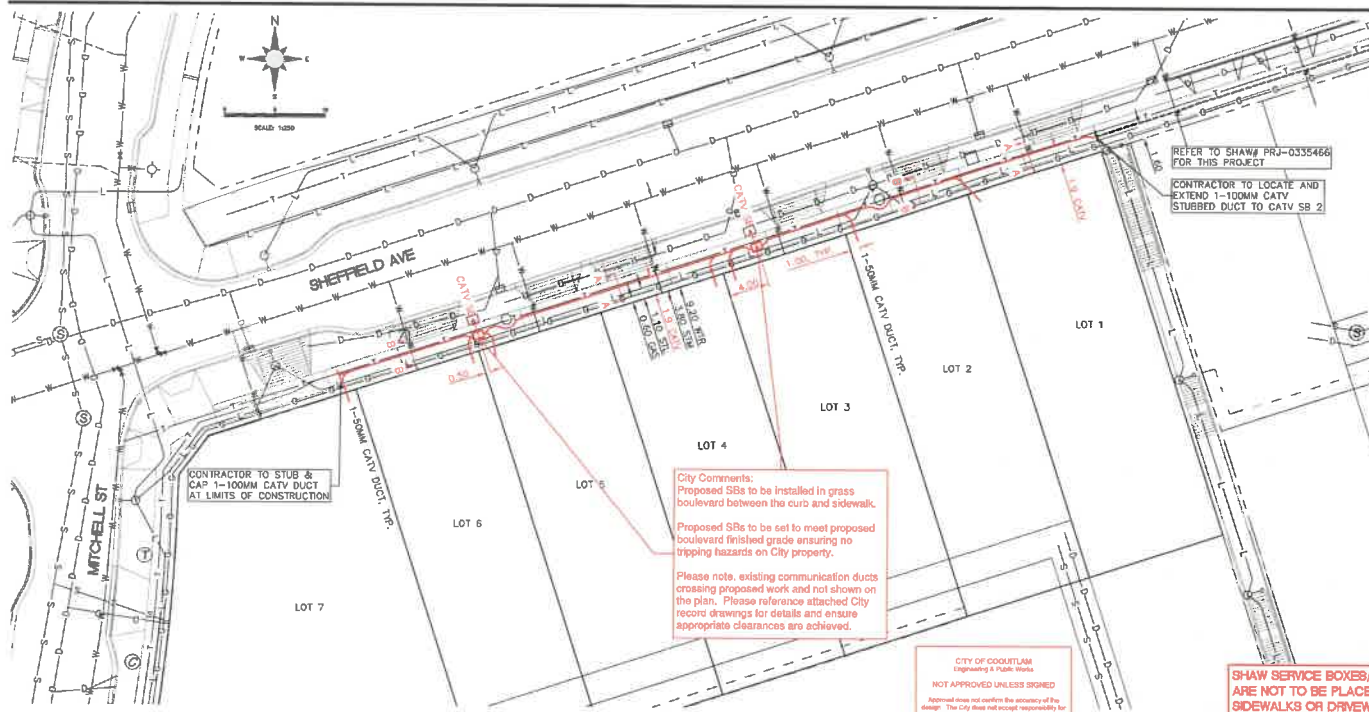
REVISION: 7



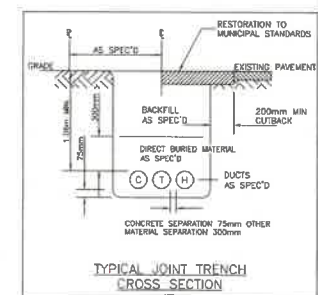
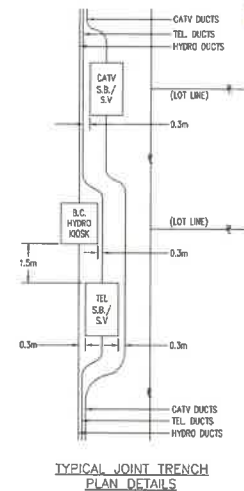
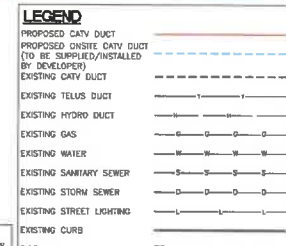
- STREET LIGHTING LEGEND:**
- 7.62m DAWT STREETLIGHT POLE ON A TYPE C3 CONCRETE BASE
  - 7.62m DAWT STREETLIGHT POLE ON A TYPE C2 CONCRETE BASE
  - 7.62m DAWT STREETLIGHT POLE ON A TYPE C2 CONCRETE BASE w/ 6.0m PATHWAY BACKLIGHT
  - 9.14m DAWT STREETLIGHT POLE ON A TYPE C CONCRETE BASE w/ PHOTOELECTRIC CONTROLLER (PEC) WHERE NOTED
  - 9.14m DAWT STREETLIGHT POLE ON A TYPE C CONCRETE BASE w/ 6.0m PATHWAY BACKLIGHT
  - 6.0m PATHWAY POLE ON A TYPE B CONCRETE BASE
  - TYPE B CONCRETE BASE ONLY, FOR 4.6m TIGHT LIGHT POLE
  - 3 No. 8 RW90 STRANDED COPPER ST. LIT. & 1 No. 6 RW90 BOND IN 25mm RPVC
  - 25mm RPVC w/ 3 No. 6 RW90 STRANDED COPPER ST. LIT. & 1 No. 6 RW90 BOND
  - 2 No. 8 RW90 STRANDED COPPER ST. LIT. & 1 No. 6 RW90 BOND IN 20mm RPVC
  - 20mm RPVC CONDUIT PROVIDED WITH NYLON PULL CORD
  - STRIP OUT & CAP 35mm RPVC PROVIDED WITH NYLON PULL CORD FOR FUTURE EXTENSION
  - 35mm RPVC w/ 3 No. 3 CONDUCTORS
  - EMPTY CONDUIT 78mm RPVC (UNLESS OTHERWISE NOTED)
  - LOCATION OF B.C. HYDRO SERVICE BOX (120/240V)
  - SMYRTECH 24x24x24mm W/ALUM OR CP COMPOSITE EQUIVALENT

**RECORD DRAWING**

THE SEAL AND SIGNATURE OF THE LICENSED PROFESSIONAL ENGINEER OF THIS DRAWING CERTIFIES THAT THE DESIGN INFORMATION CONTAINED HEREIN IS THE PROPERTY OF THE ENGINEER AND IS NOT TO BE REPRODUCED OR TRANSMITTED IN ANY FORM OR BY ANY MEANS, ELECTRONIC OR MECHANICAL, INCLUDING PHOTOCOPYING, RECORDING, OR BY ANY INFORMATION STORAGE AND RETRIEVAL SYSTEM, WITHOUT THE WRITTEN PERMISSION OF THE ENGINEER. THE ENGINEER'S LIABILITY IS LIMITED TO THE DESIGN AND CONSTRUCTION OF THE PROJECT ONLY AND DOES NOT INCLUDE ANY OTHER SERVICES OR CONSULTING SERVICES. THE ENGINEER'S LIABILITY IS LIMITED TO THE DESIGN AND CONSTRUCTION OF THE PROJECT ONLY AND DOES NOT INCLUDE ANY OTHER SERVICES OR CONSULTING SERVICES. THE ENGINEER'S LIABILITY IS LIMITED TO THE DESIGN AND CONSTRUCTION OF THE PROJECT ONLY AND DOES NOT INCLUDE ANY OTHER SERVICES OR CONSULTING SERVICES.



**CONSTRUCTION NOTES:**  
 ALL SHAW CATV DUCTS TO RUN IN COUGHAN TRENCH WITH BC HYDRO AND TELUS DUCTS UNLESS OTHERWISE NOTED.  
 SHAW REQUIRES:  
 A. A PRE-CONSTRUCTION MEETING WITH THE CIVIL CONTRACTOR TO ADDRESS CONSTRUCTION RELATED QUESTIONS.  
 B. AN INSPECTION ONCE THE CATV DUCTS ARE PLACED, PRIOR TO BACKFILL PLACING.  
 C. A FINAL INSPECTION.  
 PLEASE CALL SHAW CANADA (800) 345-0132 OR JIMMY CHAMAM AT (778) 227-8034 FOR INSPECTIONS.  
 THE CONTRACTOR IS TO REQUEST OFFSITE CATV MATERIALS FROM SHAW A MINIMUM OF TEN (10) BUSINESS DAYS PRIOR TO CONSTRUCTION START. MATERIALS CAN BE COLLECTED FROM ICORE AND AE CONCRETE WITH PICK NUMBERS PRU-2829040



**SHAW DUCT IDENTIFICATION TAGS INSTALLED**

COMPANY \_\_\_\_\_  
 CONTRACTOR \_\_\_\_\_  
 DATE \_\_\_\_\_

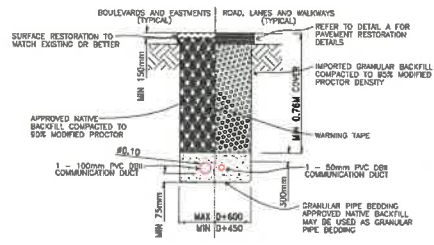
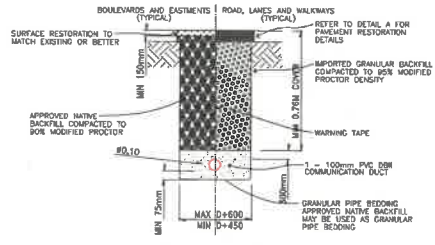
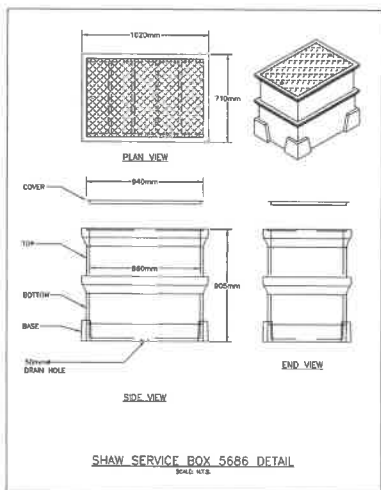
**SUBMIT FOR CATV PERMIT**

MUNICIPALITY \_\_\_\_\_  
 APPROVED \_\_\_\_\_  
 DATE \_\_\_\_\_

**City Comments:**  
 Proposed S/Bs to be installed in grass boulevard between the curb and sidewalk.  
 Proposed S/Bs to be set to meet proposed boulevard finished grade ensuring no tripping hazards on City property.  
 Please note, existing communication ducts crossing proposed work and not shown on the plan. Please reference attached City record drawings for details and ensure appropriate clearances are achieved.

**CITY OF COQUITLAM**  
 Engineering & Public Works  
 NOT APPROVED UNLESS SIGNED  
 Approved does not confirm the accuracy of the design. The City shall not accept responsibility for any errors or omissions presented due to errors, omissions or omissions to the design.  
 Date: 03/01/2024

**SHAW SERVICE BOXES/VAULTS ARE NOT TO BE PLACED ON SIDEWALKS OR DRIVEWAYS**  
**JOINT TRENCH WITH BC HYDRO REFER TO DWG# 414-U07-0768**



- CONSTRUCTION NOTES**
- MINIMUM COVER OVER 1.0m ALL SECTIONS, EXCEPT WHERE OTHERWISE NOTED.
  - ALL DUCTS TO BE 100mm P.V.C. SB 11 UNLESS OTHERWISE NOTED.
  - ALL MANUFACTURED BENDS TO BE 0.8m RADIUS UNLESS OTHERWISE NOTED.
  - ALL ENDSETER PLUSTERS TO BE 200mm ABOVE GRADE UNLESS OTHERWISE NOTED.
  - CONTRACTOR IS TO PROVIDE THE LOCATION OF ALL EXISTING L.V.D. UTILITIES AND SERVICES AFFECTED BY CONSTRUCTION.
  - CONTRACTOR TO CONTACT THE APPROPRIATE FORENSIC RECORDS DEPARTMENT 48 HRS. PRIOR TO STARTING WORK.
  - ALL BACKFILL MATERIAL AND COMPACTION TO BE IN ACCORDANCE WITH THE APPROVING AUTHORITIES' SPECIFICATIONS.
  - ORANGE BARRIER TAPS TO BE PLACED IN TRENCH LINE, 300mm ABOVE DUCTS.
  - ALL TRENCHES COMMON TO ALL POWER AND COMMUNICATIONS DUCTS TO BE 300mm OTHER MATERIAL OR 75mm CONCRETE SEPARATION.
  - ALL PROPOSED MANHOLES AND SERVICE VAULTS TO BE INSTALLED A MINIMUM OF 1.0m BELOW THE TOP OF BRANCHED ROAD.
  - CONTRACTOR MUST CONTACT A TELUS INSPECTOR 48 HRS. PRIOR TO CONNECTING TO TELUS FACILITIES.
  - PLACE 15mm BRANDED KNOW CORO IN ALL MANHOLE AND SERVICE DUCTS.
  - WHERE FIBERGLASS SERVICE BOXES ARE USED, CONTRACTOR TO USE A SLOTTON BASED GASKING TO SEAL DUCT ENTRY INTO BOX.
  - FOR COMMUNICATIONS  
 RICK UNDERSHUTE  
 804-841-9155

**CAUTION BURIED CABLES (CALL DIG SHAW TO LOCATE)**

**RMI communications**

**Dig Shaw Shaw**

SHAW TOWER  
 900-1007 W. COXSONA ST.  
 VANCOUVER, B.C.  
 V6C 3T2

A	09/12/23	KSJ	ISSUED FOR REVIEW
Issue	Date	By/for	

Drawn By:	R. UNDERSHUTE	Project:	PROPOSED SHAW UNDERGROUND CONDUIT CONSTRUCTION FOR 7 LOT SP4 RESIDENTIAL DEVELOPMENT	Scale:	AS SHOWN
Design:	K. ST-JEAN	Project No.:	PRJ-2829040	Drawn No.:	PER-4456085
Date:	09/12/23	Location:	1387 MITCHELL STREET, COQUITLAM, B.C.	Sheet:	1 OF 1
Checked:		Drawn:		Revised:	



MULTI-USE PATHWAY ILLUMINANCE DESIGN CRITERIA		
STREET NAME(S)	SHEFFIELD AVENUE M.U.P.	
PEDESTRIAN ACTIVITY	LOW	
LUMINAIRE TYPE	4.8m PATHWAY POLE - 25W LED TYPE II DIST.	
LUMINAIRE PRODUCT CODE	ARC-ED0-248-DA-02-E-UL-300-40K (25W LED)	
IES FILE	248-E-1m	
LUMINAIRE COLOUR TEMPERATURE	4000K	
DESIGN CRITERIA	DESIGN REQUIREMENTS	DESIGN ACHIEVED
ILLUMINANCE LEVEL (AVG.)	≥ 4.0	7.02
ILLUMINANCE UNIFORMITY RATIO (AVG:MIN)	≤ 4.0	3.00

MULTI-USE PATHWAY ILLUMINANCE DESIGN CRITERIA		
STREET NAME(S)	LOFTING STREET M.U.P.	
PEDESTRIAN ACTIVITY	MEDIUM	
LUMINAIRE TYPE	4.8m PATHWAY POLE - 35W LED TYPE II DIST.	
LUMINAIRE PRODUCT CODE	ARC-ED0-248-DA-02-E-UL-300-40K (25W LED)	
IES FILE	248-E-1m	
LUMINAIRE COLOUR TEMPERATURE	4000K	
DESIGN CRITERIA	DESIGN REQUIREMENTS	DESIGN ACHIEVED
ILLUMINANCE LEVEL (AVG.)	≥ 8.0	9.44
ILLUMINANCE UNIFORMITY RATIO (AVG:MIN)	≤ 4.0	2.65

120V SERVICE LOAD ON LOFTING STREET (40A - 120/240V SERVICE PANEL)						
WATTAGE (W)	CCT. PHASE	EXISTING	REMOVED	PROPOSED	TOTAL No. OF LOADS	TOTAL CONDUCTOR LENGTH (m)
53W	R	-	-	10	10	1708
	B	-	-	10	10	
60W	R	-	-	6	6	
	B	-	-	6	6	
25W	R	-	-	17	17	
	B	-	-	14	14	
CALCULATED VOLTAGE DROP: 1.41% AT STA. 2+803.3						

COG AS BUILT  
E1434-02  
C2121-02

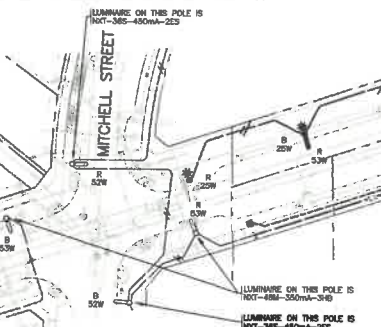
SEE E1434-05 FOR STL DETAILS

**NOTES:**  
METRIC GAS AND TELEPHONE ARE NOT LOCATED ON THE CITY OF COQUITLAM AS BUILT. CONTACT BE HYDRO, TYPHON GAS AND TELUS FOR CURRENT AS-BUILT INFORMATION TO THESE UTILITIES.

**NOTE:**  
LOCATION OF EXISTING UTILITIES SHOWN ARE APPROXIMATE ONLY AND SHOULD BE CONFIRMED BY A PRE-LOCATOR AND MANUAL DIGGING. ALL CO-OP EXISTING UTILITIES ARE NOT NECESSARILY SHOWN.

**THIS PROPOSAL IS SUPPLIED BY THE CITY OF COQUITLAM FOR GENERAL INFORMATION ONLY AND THE ACCURACY OF INFORMATION CONTAINED IN THIS DOCUMENT IS NOT GUARANTEED BY THE CITY.**

REFER TO PRIMARY ENGINEERING DRAWING No. DB-07452 SL FOR STREETLIGHT INFORMATION ON SHEFFIELD AVENUE & MITCHELL STREET



STREETLIGHTING LUMINANCE DESIGN CRITERIA		
STREET NAME(S)	LOFTING STREET - SOUTH OF SHEFFIELD AVENUE	
PEDESTRIAN ACTIVITY	MEDIUM	
ROAD CLASSIFICATION	COLLECTOR	
LUMINAIRE TYPE	9.14m DAWT POLE - 89W LED TYPE 38B DIST. 7.62m DAWT POLE - 89W LED TYPE 38B DIST.	
LUMINAIRE PRODUCT CODE	NOT-484-0-7-38B-4-0Y-3-UL-5-2H (89W LED) NOT-484-0-7-38B-3-0Y-3-UL-5-2H (89W LED)	
IES FILE	NOT-484-400mA-385-4000K-1m NOT-484-350mA-2E3-4000K-1m	
POLE ARRANGEMENT	STAGGERED	
POLE SPACING (WORST CASE)	38m	
LUMINAIRE COLOUR TEMPERATURE	4000K	
DESIGN CRITERIA	DESIGN REQUIREMENTS	DESIGN ACHIEVED
ILLUMINANCE LEVEL (AVG.)	≥ 0.8	0.64
ILLUMINANCE UNIFORMITY RATIO (AVG:MIN)	≤ 3.5	1.70
ILLUMINANCE UNIFORMITY RATIO (MAX:MIN)	≤ 6.0	3.00
VEILING LUMINANCE RATIO (VLM:AVG)	≤ 0.4	0.29

STREETLIGHTING LUMINANCE DESIGN CRITERIA		
STREET NAME(S)	SHEFFIELD AVENUE	
PEDESTRIAN ACTIVITY	LOW	
ROAD CLASSIFICATION	COLLECTOR	
LUMINAIRE TYPE	7.62m DAWT POLE - 89W LED TYPE 38B DIST. 7.62m DAWT POLE - 89W LED TYPE 38B DIST.	
LUMINAIRE PRODUCT CODE	NOT-484-0-7-38B-4-0Y-3-UL-5-2H (89W LED) NOT-484-0-7-38B-3-0Y-3-UL-5-2H (89W LED)	
IES FILE	NOT-484-400mA-385-4000K-1m NOT-484-350mA-2E3-4000K-1m	
POLE ARRANGEMENT	STAGGERED	
POLE SPACING (WORST CASE)	42m	
LUMINAIRE COLOUR TEMPERATURE	4000K	
DESIGN CRITERIA	DESIGN REQUIREMENTS	DESIGN ACHIEVED
ILLUMINANCE LEVEL (AVG.)	≥ 0.4	0.53
ILLUMINANCE UNIFORMITY RATIO (AVG:MIN)	≤ 4.0	2.80
ILLUMINANCE UNIFORMITY RATIO (MAX:MIN)	≤ 6.0	6.50
VEILING LUMINANCE RATIO (VLM:AVG)	≤ 0.4	0.38

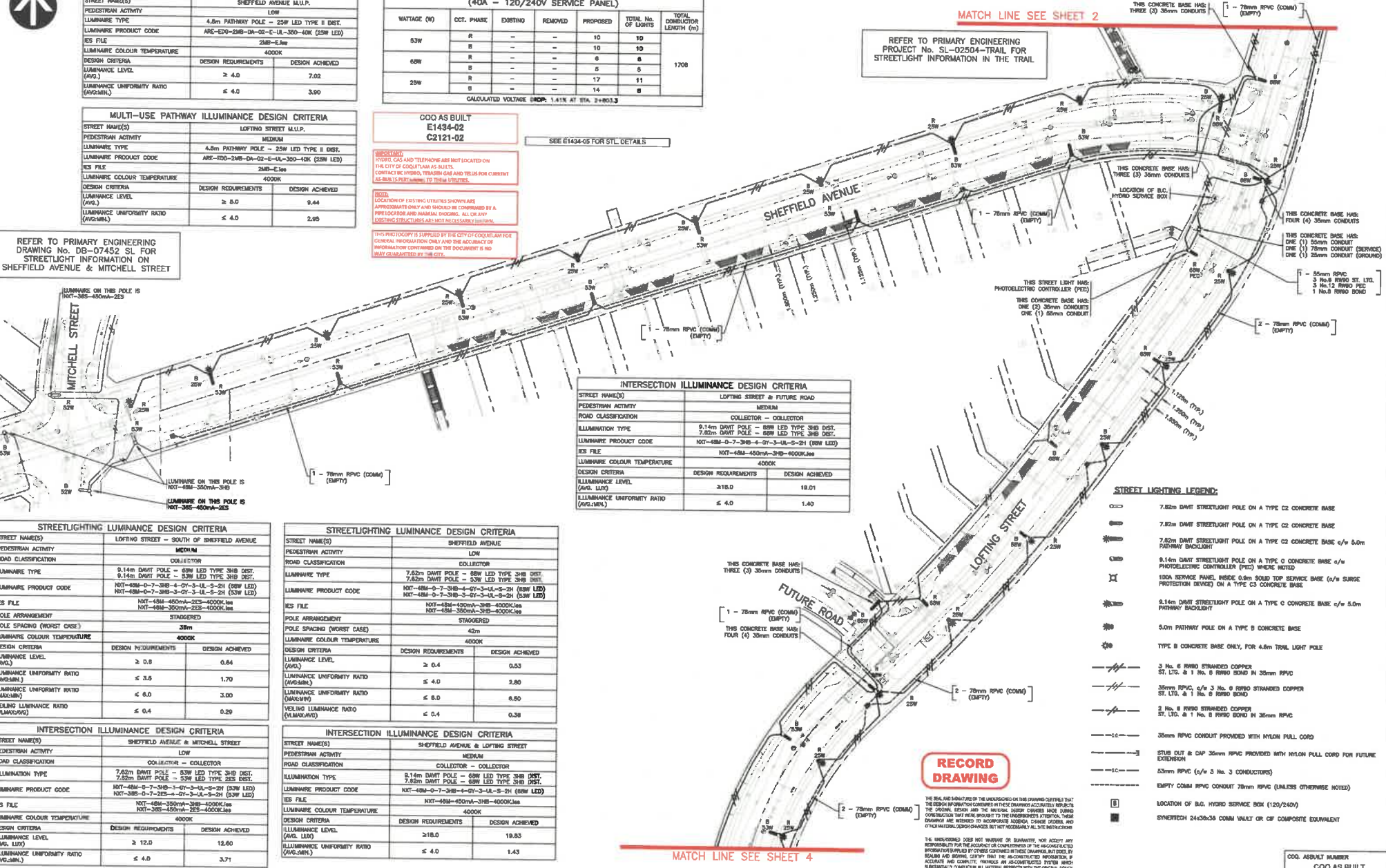
INTERSECTION ILLUMINANCE DESIGN CRITERIA		
STREET NAME(S)	SHEFFIELD AVENUE & MITCHELL STREET	
PEDESTRIAN ACTIVITY	LOW	
ROAD CLASSIFICATION	COLLECTOR - COLLECTOR	
LUMINAIRE TYPE	7.62m DAWT POLE - 89W LED TYPE 38B DIST. 7.62m DAWT POLE - 89W LED TYPE 38B DIST.	
LUMINAIRE PRODUCT CODE	NOT-484-0-7-38B-4-0Y-3-UL-5-2H (89W LED) NOT-484-0-7-38B-3-0Y-3-UL-5-2H (89W LED)	
IES FILE	NOT-484-400mA-385-4000K-1m NOT-484-350mA-2E3-4000K-1m	
LUMINAIRE COLOUR TEMPERATURE	4000K	
DESIGN CRITERIA	DESIGN REQUIREMENTS	DESIGN ACHIEVED
ILLUMINANCE LEVEL (AVG. ILLD)	≥ 12.0	12.60
ILLUMINANCE UNIFORMITY RATIO (AVG:MIN)	≤ 4.0	3.71

INTERSECTION ILLUMINANCE DESIGN CRITERIA		
STREET NAME(S)	SHEFFIELD AVENUE & LOFTING STREET	
PEDESTRIAN ACTIVITY	MEDIUM	
ROAD CLASSIFICATION	COLLECTOR - COLLECTOR	
LUMINAIRE TYPE	9.14m DAWT POLE - 89W LED TYPE 38B DIST. 7.62m DAWT POLE - 89W LED TYPE 38B DIST.	
LUMINAIRE PRODUCT CODE	NOT-484-0-7-38B-4-0Y-3-UL-5-2H (89W LED) NOT-484-0-7-38B-3-0Y-3-UL-5-2H (89W LED)	
IES FILE	NOT-484-400mA-385-4000K-1m NOT-484-350mA-2E3-4000K-1m	
LUMINAIRE COLOUR TEMPERATURE	4000K	
DESIGN CRITERIA	DESIGN REQUIREMENTS	DESIGN ACHIEVED
ILLUMINANCE LEVEL (AVG. ILLD)	≥ 18.0	19.83
ILLUMINANCE UNIFORMITY RATIO (AVG:MIN)	≤ 4.0	1.43

INTERSECTION ILLUMINANCE DESIGN CRITERIA		
STREET NAME(S)	LOFTING STREET & FUTURE ROAD	
PEDESTRIAN ACTIVITY	MEDIUM	
ROAD CLASSIFICATION	COLLECTOR - COLLECTOR	
LUMINAIRE TYPE	9.14m DAWT POLE - 89W LED TYPE 38B DIST. 7.62m DAWT POLE - 89W LED TYPE 38B DIST.	
LUMINAIRE PRODUCT CODE	NOT-484-0-7-38B-4-0Y-3-UL-5-2H (89W LED) NOT-484-0-7-38B-3-0Y-3-UL-5-2H (89W LED)	
IES FILE	NOT-484-400mA-385-4000K-1m NOT-484-350mA-2E3-4000K-1m	
LUMINAIRE COLOUR TEMPERATURE	4000K	
DESIGN CRITERIA	DESIGN REQUIREMENTS	DESIGN ACHIEVED
ILLUMINANCE LEVEL (AVG. ILLD)	≥ 18.0	19.01
ILLUMINANCE UNIFORMITY RATIO (AVG:MIN)	≤ 4.0	1.40

MATCH LINE SEE SHEET 2

REFER TO PRIMARY ENGINEERING PROJECT No. SL-02504-TRAIL FOR STREETLIGHT INFORMATION IN THE TRAIL



- STREET LIGHTING LEGEND:**
- 7.62m DAWT STREETLIGHT POLE ON A TYPE C2 CONCRETE BASE
  - 7.62m DAWT STREETLIGHT POLE ON A TYPE C2 CONCRETE BASE
  - 7.62m DAWT STREETLIGHT POLE ON A TYPE C2 CONCRETE BASE c/w 5.0m PATHWAY BACKLIGHT
  - 9.14m DAWT STREETLIGHT POLE ON A TYPE C CONCRETE BASE c/w PHOTOELECTRIC CONTROLLER (PEC) (NOTE: 1.0A ROTARY PANEL INSIDE 0.8m SOLID TOP SERVICE BASE c/w SURGE PROTECTION DEVICE) ON A TYPE C3 CONCRETE BASE
  - 9.14m DAWT STREETLIGHT POLE ON A TYPE C CONCRETE BASE c/w 5.0m PATHWAY BACKLIGHT
  - 5.0m PATHWAY POLE ON A TYPE B CONCRETE BASE
  - TYPE B CONCRETE BASE ONLY, FOR 4.8m TRAIL LIGHT POLE
  - 3 No. 8 RWB0 STRANDED COPPER ST. LTD. & 1 No. 8 RWB0 BOND IN 35mm RPVC
  - 35mm RPVC c/w 3 No. 8 RWB0 STRANDED COPPER ST. LTD. & 1 No. 8 RWB0 BOND
  - 2 No. 8 RWB0 STRANDED COPPER ST. LTD. & 1 No. 8 RWB0 BOND IN 35mm RPVC
  - 35mm RPVC CONDUIT PROVIDED WITH NYLON PULL CORD
  - STUB OUT & CAP 35mm RPVC PROVIDED WITH NYLON PULL CORD FOR FUTURE EXTENSION
  - 43mm RPVC c/w 3 No. 3 CONDUCTORS
  - EMPTY CONDUIT POLE CONDUIT 75mm RPVC (UNLESS OTHERWISE NOTED)
  - LOCATION OF B.C. HYDRO SERVICE BOX (120/240V)
  - SYNTHETIC 24x26x36 CONVM VALM ULX OR OF COMPOSITE EQUIVALENT

**RECORD DRAWING**

THE REAL ESTATE SURVEYOR OF THE UNDEVELOPED ON THIS DRAWING CERTIFIES THAT THE DESIGN INFORMATION CONTAINED IN THESE DRAWINGS ACCURATELY REFLECTS THE DESIGN, EXCEPT AS NOTED. THE DESIGNER ASSUMES FULL RESPONSIBILITY FOR THE ACCURACY OF THE INFORMATION SUPPLIED BY OTHERS. THE DESIGNER ASSUMES FULL RESPONSIBILITY FOR THE ACCURACY AND COMPLETENESS OF THE INFORMATION SUPPLIED BY OTHERS. THE DESIGNER ASSUMES FULL RESPONSIBILITY FOR THE ACCURACY AND COMPLETENESS OF THE INFORMATION SUPPLIED BY OTHERS. THE DESIGNER ASSUMES FULL RESPONSIBILITY FOR THE ACCURACY AND COMPLETENESS OF THE INFORMATION SUPPLIED BY OTHERS.

**PRIMARY**  
24 HOUR SERVICE  
24 HOUR SERVICE  
24 HOUR SERVICE  
24 HOUR SERVICE

BC ONE CALL  
CALL BEFORE YOU DIG  
1-800-474-6888 OR BY  
CELLULAR PHONE  
MAY 15, 2015  
257-1940



REV.	DESCRIPTION	DATE
R7	ISSUED FOR RECORD	2022/03/09
R8	SHEFFIELD AND ROAD A LIGHTS UPDATED, RE-FC	2020/05/19
R9	ISSUED FOR CONSTRUCTION	2020/05/28
R4	ISSUED FOR REVIEW	2020/04/23
R3	ISSUED FOR REVIEW	2020/02/14
R2	ISSUED FOR REVIEW	2019/11/07
R1	ISSUED FOR REVIEW	2019/11/04

CLIENT	CITY OF COQUITLAM	
PROJECT	SMILING CREEK NEIGHBORHOOD - PARCEL 16A STREET LIGHTING	
SCALE	0 1:500 25	DRAWING TITLE
DESIGN BY	SS	DRAWN BY
PLDT DATE	2022-03-03	PLDT TIME
DRAWING NUMBER		REVISION
SL-02504		7

COG AS BUILT  
E1434-02  
C2121-02

Street Lighting Site Plan  
Sheet 3

SL-02504



**LOCATION MAP**

**FOR CONSTRUCTION ONLY IF APPROVED BY AUTHORITY**  
 Designed By: MARJORIE GUTING  
 Phone: 778-945-2616

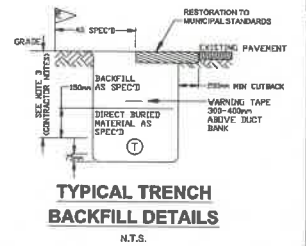
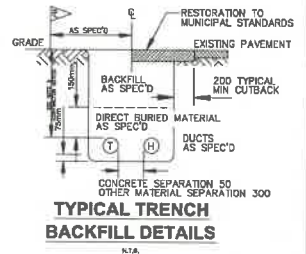
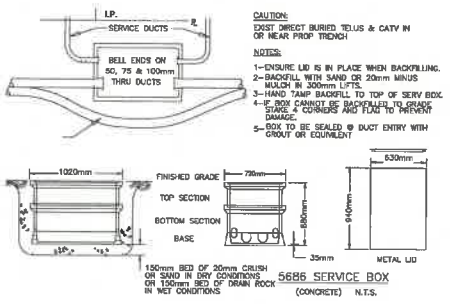
**AREA DISTURBED**  
 TRENCH = 259m x 1.0m = 259m<sup>2</sup>  
 5686 SB = 1.02m x 0.72m = 0.73m<sup>2</sup>  
 TOTAL = 260m<sup>2</sup> (E)

CITY OF COQUITLAM  
 Engineering & Public Works  
 NOT APPROVED UNLESS SIGNED  
 Approval does not confirm the accuracy of the design. The City does not accept responsibility for any costs or damages incurred due to errors, omissions or corrections in the design.  
  
 On behalf of the Manager of Capital Projects & Operations  
 04/30/2024  
 Date

- CONSTRUCTION NOTES:**
- ALL WORKMANSHIP MUST BE IN ACCORDANCE WITH THE APPLICABLE EDITION OF THE TELUS OUTSIDE PLANT PRACTICE & STANDARDS (TOPPS).
  - ALL STRANDS TO CONFORM TO CSA GRADE 1300. DIAMETER) UNLESS NOTED.
  - ALL DOWN GUYS INSTALLED MUST BE SIZE 10 (10.7MM DIAMETER) W/ JOHNNY BALL STRAIN INSULATOR UNLESS NOTED.
  - ALL ANCHORS INSTALLED MUST BE 25MM (1 IN) ROD, 0.25 SQ-M (400 SQ IN) CROSS-PLATE WITH MINIMUM SHAFT CAPACITY OF 160 KN (36M) UNLESS NOTED.
  - FOR SINGLE GUY ATTACHMENTS ONLY, CROSS-PLATE ANCHORS MAY BE SUBSTITUTED WITH PISA 25MM (1 IN) ROD, (14 IN) SINGLE OR (10 IN) DOUBLE HELIX ANCHOR WITH MINIMUM SHAFT CAPACITY OF 138 KN (31 M).
  - ALL NEW ANCHOR(S) SHAFT ROD(S) MUST BE MIN. 1 IN IN DIAMETER OR LARGER, UNLESS OTHERWISE NOTED.
  - YELLOW DOWNHAUL GUARDS SHALL BE INSTALLED AS PER TOPPS 1.1.1.11, JUB024.
  - POLE LINE EXTENSION BOLT STRAP TO CONFORM TO TOPPS 1.1.2.4.5
  - ATTACHING GUYS (POLE AND RODS) TO CONFORM TO TOPPS 1.1.1.4

CONSTRUCTION NOTES	
1. ELEVATIONS REFER TO _____ DATUM.	X
2. CONDUIT GRADE ON PROFILE IS APPROXIMATE ONLY. FINISHED GRADE WILL BE SUBJECT TO LOCATION OF EXISTING UNDERGROUND UTILITIES.	X
3. MIN. DEPTH OF COVER AS-PER AUTHORITY REQUIREMENTS OR CSA 22.3 #7, WHICHEVER MORE CONSERVATIVE. MANHOLE ROOF <u>0.46m</u>	X
4. ALL DUCTS TO BE 100mm P.V.C. DB II (ORANGE) UNLESS OTHERWISE NOTED.	X
5. ALL MANUFACTURED BENDS TO BE <u>0.91m</u> RADIUS UNLESS OTHERWISE NOTED.	X
6. ALL CONCRETE PILASTERS TO BE <u>0.30m</u> ABOVE GRADE UNLESS OTHERWISE NOTED.	X
7. CONTRACTOR IS TO PROVE THE LOCATIONS OF ALL EXISTING UNDERGROUND UTILITIES AND SERVICES AFFECTED BY CONSTRUCTION BY M-SCOPE, HAND EXCAVATION OR BC ONE CALL.	X
8. FOR CABLE TROUBLE OR REPAIR INFORMATION, CONTACT TELUS AT 611.	X
9. TEMPORARY/PERMANENT RESTORATION IN ALL PAVED/SIDEWALK AREAS TO BE DONE IN ACCORDANCE WITH ALL APPROVING AUTHORITIES SPECIFICATIONS AND APPROVAL.	X
10. PERMANENT SIDEWALK, CURB, BOULEVARD, AND ROAD REPAIRS TO BE DONE BY CONTRACTOR, UNLESS OTHERWISE REQUIRED BY AUTHORITY.	X
11. ALL LANDSCAPE RESTORATION IN LAWN BOULEVARDS MUST BE DONE BY USING SUITABLE GRASS SOD.	X
12. CONTRACTOR TO CONTACT THE APPROPRIATE GAS COMPANY RECORDS DEPARTMENT 24 HOURS PRIOR TO STARTING WORK.	X
13. CONTRACTOR TO CONTACT THE CITY/MUNICIPAL WORKS INSPECTOR 48 HOURS PRIOR TO STARTING WORK.	X
14. CONTRACTOR TO CALL BC ONE CALL (FOR BC) OR AS ONE CALL (FOR ALBERTA) 48 HOURS PRIOR TO DIGGING.	X
15. ALL BACKFILL MATERIAL AND COMPACTION TO BE IN ACCORDANCE WITH ALL APPROVING AUTHORITIES SPECIFICATIONS.	X
16. ALL DIRECT BURIED SYSTEMS 2-WAY AND LARGER TO BE BUNDLED AND STRAPPED.	X
17. TELUS CONTRACTOR TO SUPPLY AND PLACE AN ENCLOSED PLYWOOD BOX OVER SAC PAD DUCTS AND SECURED TO FRAME.	X
18. BREAK OUT EXISTING CONCRETE ENCASED DUCTS: ANY JACK-HAMMERING OR USE OF POWER TOOLS TO BE CARRIED OUT BY CONTRACTOR. ALL HAND STRIPPING OF DUCTS, BREAKING OF DUCTS AND/OR HANDLING OF CABLES TO BE DONE BY TELUS CONTRACTOR.	X
19. EXISTING CONDUIT TO BE RELOCATED IF REQUIRED TO ENSURE SPECIFIED ENTRANCE LOCATIONS INTO MANHOLE/Vault. CONTRACTOR TO PROVIDE EXCAVATION, BACK-FILLING AND RESTORATION IF RELOCATION BECOMES NECESSARY.	X
20. ORANGE TELUS MARKER TAPE TO BE PLACED ON CENTERLINE OF DUCT BANK @ 300mm BELOW FINAL GRADE.	X
21. CONTACT TELUS 10 DAYS BEFORE PROJECT START TO ARRANGE PICKUP LOCATION OF TELUS SUPPLIED MATERIAL. BC: TELUSBAU@LEDCOR.COM or 1-833-859-0501	X
22. SUBGRADE & DIRECT BURIED MATERIAL WHERE APPLICABLE SHALL BE 20mm MINUS CRUSHED AGGREGATE.	X
23. BACKFILL MATERIAL SHALL BE: IN ROADWAYS/TRAVELLED AREAS <u>20mm MINUS</u> IN SIDEWALK/TRAVELLED AREAS <u>20mm MINUS</u> IN BOULEVARD/UNTRAVELLED AREAS <u>20mm MINUS</u>	X
24. CONTRACTOR TO PULL IN A TELUS SUPPLIED MEASURING TAPE THRU ONE DUCT IN EACH RUN AFTER MANDRELLING. LOCATION TO BE DETERMINED BY TELUS.	X
25. MINIMUM SEPARATION FROM ALL UTILITIES TO BE AS-PER AUTHORITY REQUIREMENTS OR CSA 22.3 #7, WHICHEVER MORE CONSERVATIVE.	X
26. ALL DIMENSIONS IN mm UNLESS OTHERWISE NOTED	X

**MATERIALS PICKUP**  
 PLEASE CONTACT TELUSBAU@LEDCOR.COM OR 1-833-859-0501 AT LEAST 5 DAYS PRIOR TO CONSTRUCTION START DATE TO GET MATERIALS PICK UP # INSPECTION  
**INSPECTION**  
 CONTACT ENCEPTA TO REQUEST FOR CONDUIT INSPECTION (CIVILINSPECTION.LMLD@ENCEPTA.NET). THE BUILD DATE MUST BE PROVIDED TO REQUEST FOR CONDUIT INSPECTION BY YOUR CIVIL CONTRACTOR.  
**GETTING YOUR SERVICE INSTALLED**  
 ONCE YOUR INSPECTION IS COMPLETE, PLEASE ORDER SERVICES ONLINE OR CONTACT OUR TELUS CUSTOMER CARE LINE AT 604-310-2255 TO SET UP SERVICE



**SECTION A-A**

**SECTION B-B**

**DISCLAIMER:**

- THE DRAWING IS PROJECT SPECIFIC AND PROPERTY OF TELUS, THE DRAWING SHALL NOT BE USED WITHOUT THE CONSENT OF TELUS.
- ITS DOES NOT ASSUME RESPONSIBILITY FOR THE ACCURACY OF THE CONTENTS WHETHER SHOWN OR OMITTED FROM THIS DRAWING BEYOND THE REQUIREMENTS LISTED IN APPROVING AUTHORITY REQUIREMENTS.
- THIS DRAWING SHALL BE USED IN CONJUNCTION WITH IFC DRAWINGS. CONSTRUCTION SHALL VERIFY COMPLETENESS OF ALL POWER UTILITY AND TELUS MAKE READY BEFORE LASHING NEW CABLES.
- POLE PLANT SHOWN FOR INFORMATION PURPOSES ONLY. THE UNDERSIGNED AND TELUS DO NOT TAKE RESPONSIBILITY FOR THE POLE UTILITY DESIGN/PERMIT.

**MATERIALS PICKUP**  
 PLEASE CONTACT TELUSBAU@LEDCOR.COM OR 1-833-859-0501 AT LEAST 5 DAYS PRIOR TO CONSTRUCTION START DATE TO GET MATERIALS PICK UP # INSPECTION  
**INSPECTION**  
 CONTACT ENCEPTA TO REQUEST FOR CONDUIT INSPECTION (CIVILINSPECTION.LMLD@ENCEPTA.NET). THE BUILD DATE MUST BE PROVIDED TO REQUEST FOR CONDUIT INSPECTION BY YOUR CIVIL CONTRACTOR.  
**GETTING YOUR SERVICE INSTALLED**  
 ONCE YOUR INSPECTION IS COMPLETE, PLEASE ORDER SERVICES ONLINE OR CONTACT OUR TELUS CUSTOMER CARE LINE AT 604-310-2255 TO SET UP SERVICE

**LEGEND**

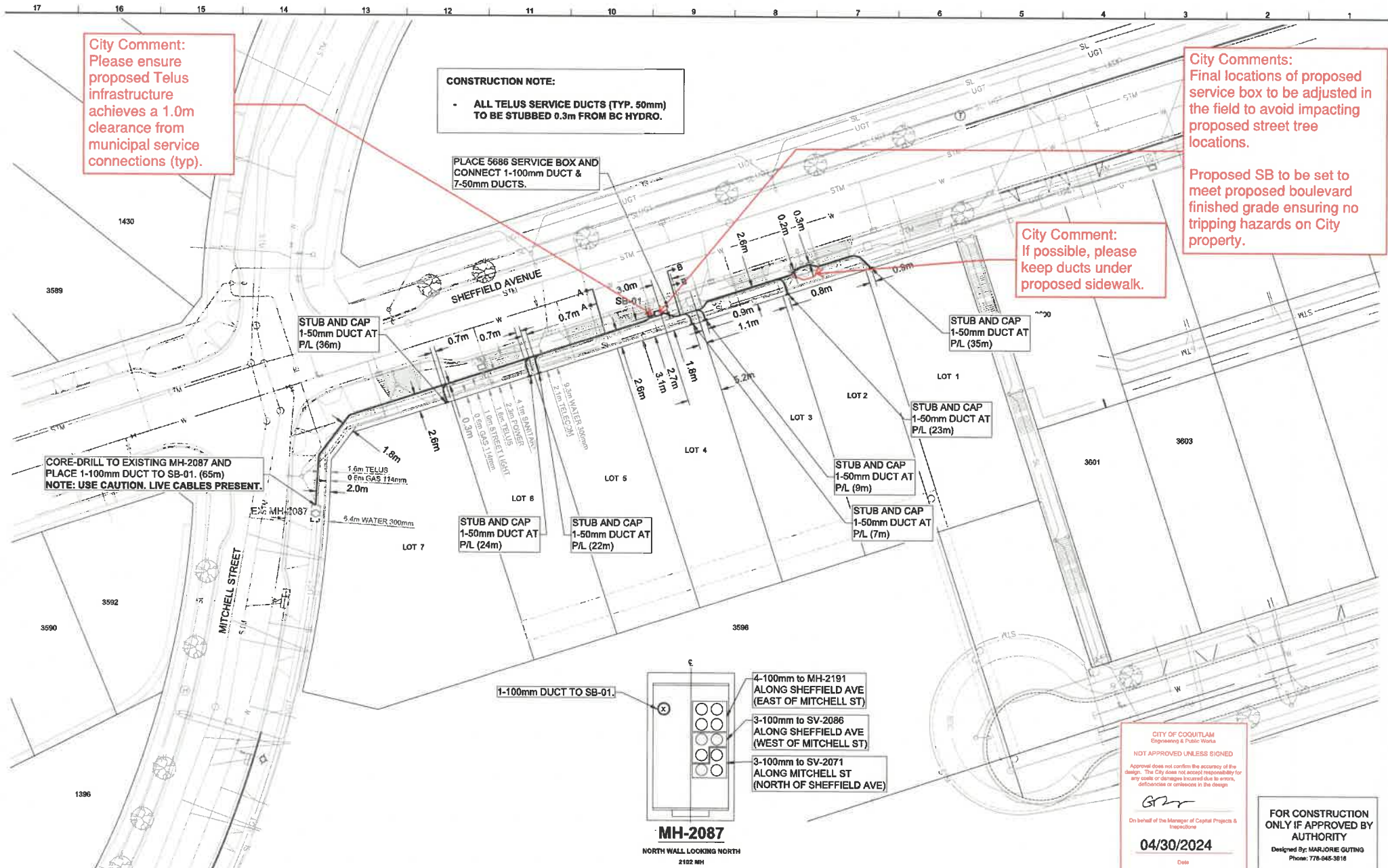
	PROPOSED SERVICE BOX / FDH
	PROPOSED MANHOLE
	PROPOSED SERVICE VAULT
	PROPOSED PEDESTAL
	PROPOSED CONDUIT (OPEN TRENCH)
	PROPOSED CONDUIT (DIRECTIONAL DRILL)
	PROPOSED DROP CONDUIT
	WATER MAIN
	SEWER MAIN
	SANITARY MAIN
	STORM MAIN
	GAS MAIN
	TEL DUCTS
	CATV DUCTS
	POWER DUCTS
	PIPELINE
	STREETLIGHT
	ABANDONED UTILITY
	EDGE OF PAVEMENT
	BACK OF CURB
	POLE (W/ ANCHOR)

TOTAL ESTIMATED PUBLIC CIVIL DISTANCE (m)	260m
TOTAL ESTIMATED PRIVATE CIVIL DISTANCE (m)	0m
TOTAL ESTIMATED PUBLIC CABLE PLACING (m)	0m
TOTAL ESTIMATED PRIVATE CABLE PLACING (m)	0m
# OF PROPOSED STRUCTURES	1
# POLES	0
# LOTS	7

GENERAL NOTES	REFERENCE DRAWINGS	REVISIONS	DES	CHK	MG	CHK	LC
ALL HYDROVAC SLURRY MUST BE PROPERLY DISPOSED AT A PROVISIONALLY APPROVED FACILITY. RECORD KEEPING INCLUDING THE HYDROVAC OPERATOR NAME, DATE, LOCATION WHERE THE MATERIAL WAS EXTRACTED AND DISPOSED AND AMOUNT AND CONTENT OF SLURRY MUST BE MAINTAINED AND MADE AVAILABLE ON REQUEST.	DRAWING # 2604715	TITLE TELUS AS-BUILT	REV 0	DATE 2024-03-22	DESCRIPTION ISSUED FOR CONSTRUCTION	DES MG	CHK LC

CONTACT INFORMATION		TELUS BAU: 5080945 BC NGM RESIDENTIAL UNDERGROUND CONSTRUCTION TO SERVICE 1387 MITCHELL STREET, CITY OF COQUITLAM WESTWOOD CO NTS	
DESIGNER MARJORIE GUTING 778-945-2616 MARJORIE.GUTING@LEDCOR.COM	PREPARED FOR TELUS	SITE CONTACT CHAD BRADLEY 604-807-0719 CBRADLEY@COQUITLAM.CA	SENIOR DESIGNER LESLIE FURR 604-360-4923 LESLIE.FURR@LEDCOR.COM
PREPARED BY TELUS	PREPARED BY TELUS	IN PARTNERSHIP WITH TELUS	IN PARTNERSHIP WITH TELUS
DRAWING # 2025297U	JIRA ID NGMR-61927	SHEET: 1	DATE: 2024-03-22
PROJECT # P-2023440.01	COID WSWD	TOTAL SHEETS: 2	REVISION: 0

THE WORKS PROPOSED ON THIS DRAWING SHALL AT ALL TIMES REMAIN THE PROPERTY OF TELUS. ALL CONSTRUCTION, INSTALLATION AND TESTING TO BE PERFORMED IN ACCORDANCE WITH RELEVANT TELUS OUTSIDE PLANT STANDARDS AND PRACTICES IN EFFECT ON DATE OF STATEMENT OF WORK OR AGREED TO THEREAFTER.



**City Comment:**  
Please ensure proposed Telus infrastructure achieves a 1.0m clearance from municipal service connections (typ).

**CONSTRUCTION NOTE:**

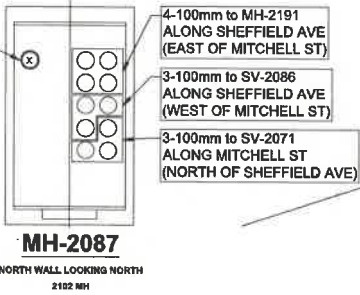
- ALL TELUS SERVICE DUCTS (TYP. 50mm) TO BE STUBBED 0.3m FROM BC HYDRO.

PLACE 5686 SERVICE BOX AND CONNECT 1-100mm DUCT & 7-50mm DUCTS.

**City Comments:**  
Final locations of proposed service box to be adjusted in the field to avoid impacting proposed street tree locations.  
  
Proposed SB to be set to meet proposed boulevard finished grade ensuring no tripping hazards on City property.

**City Comment:**  
If possible, please keep ducts under proposed sidewalk.

CORE-DRILL TO EXISTING MH-2087 AND PLACE 1-100mm DUCT TO SB-01. (65m)  
NOTE: USE CAUTION. LIVE CABLES PRESENT.



CITY OF COQUITLAM  
Engineering & Public Works  
  
NOT APPROVED UNLESS SIGNED  
  
Approval does not confirm the accuracy of the design. The City does not accept responsibility for any costs or damages incurred due to errors, omissions or oversights in the design.  
  
*GM*  
On behalf of the Manager of Capital Projects & Infrastructure  
  
04/30/2024  
Date

FOR CONSTRUCTION ONLY IF APPROVED BY AUTHORITY  
Designed By: MARJORIE GUTING  
Phone: 778-945-3816

GENERAL NOTES		REFERENCE DRAWINGS		REVISIONS		CONTACT INFORMATION		TELUS BAU: 5080945 BC-NGM RESIDENTIAL		
ALL HYDROVAC SLURRY MUST BE PROPERLY DISPOSED AT A PROVINCIALY APPROVED FACILITY. RECORD KEEPING INCLUDING THE HYDROVAC OPERATOR NAME, DATE, LOCATION WHERE THE MATERIAL WAS EXTRACTED AND DISPOSED AND AMOUNT AND CONTENT OF SLURRY MUST BE MAINTAINED AND MADE AVAILABLE ON REQUEST.		DRAWING #	TITLE	REV	DATE	DESCRIPTION	DES	CHK	DESIGNER	SITE CONTACT
	2604115	TELUS AS-BUILT	0	2024-03-22	ISSUED FOR CONSTRUCTION	MG	LC	GRAND BRADLEY 604-427-0513 GRANDLEY@COQUITLAM.CA	SENICH DESIGNER	
<p>CALL BEFORE YOU DIG 1-800-485-5886 OR BY CELLULAR 778-945-3816 Vancouver Area 327-1949</p> <p>CALL AT LEAST 3 FULL DAYS BEFORE YOU PLAN TO DIG</p> <p>CONSTRUCTION NOTE: - ALL OTHER UTILITIES TO BE LOCATED PRIOR TO CONSTRUCTION - CONTACT L&amp;S ENGINEERING FOR CHANGES TO THE APPROVED DESIGN - 6778.1386@COQUITLAM.CA</p>		<p>TELUS DESIGN SPECIALIST</p> <p>DESIGNER: MARJORIE GUTING 778-945-3816 MARJORIE@TELUS.ENCOR.COM</p> <p>PREPARED FOR: TELUS</p>		<p>SENICH CONTACT</p> <p>SENICH DESIGNER: LEO DUBI 604-380-4323 LEO.DUBI@TELUS.COM</p> <p>PREPARED BY: SENICH</p> <p>IN PARTNERSHIP WITH:</p>		<p>TELUS BAU: 5080945 BC-NGM RESIDENTIAL</p> <p>UNDERGROUND CONSTRUCTION TO SERVICE 1387 MITCHELL STREET, CITY OF COQUITLAM WESTWOOD CO</p> <p>1:500 (m)</p> <p>0 5 10 15 20</p>				
<p>DRAWING # 2925297U</p> <p>PROJECT # P-2023440.01</p>		<p>JIRA ID NGMR-61927</p> <p>COID WSWD</p>		<p>SHEET: 2</p> <p>TOTAL SHEETS: 2</p>		<p>DATE: 2024-03-22</p> <p>REVISION: 0</p>				

THE WORKS PROPOSED ON THIS DRAWING SHALL AT ALL TIMES REMAIN THE PROPERTY OF TELUS. ALL CONSTRUCTION, INSTALLATION AND TESTING TO BE PERFORMED IN ACCORDANCE WITH RELEVANT TELUS OUTSIDE PLANT STANDARDS AND PRACTICES IN EFFECT ON DATE OF STATEMENT OF WORK OR AGREED TO THEREAFTER.



MULTI-USE PATHWAY ILLUMINANCE DESIGN CRITERIA			
SHEPHERD AVENUE, M.U.P.			
STREET NAME(S)	SHEPHERD AVENUE, M.U.P.		
PEDESTRIAN ACTIVITY	LOW		
LUMINAIRE TYPE	4.8m PATHWAY POLE - 25W LED TYPE II DIST.		
LUMINAIRE PRODUCT CODE	ARE-EDG-25W-0A-02-E-UL-350-40K (25W LED)		
IES FILE	24B-E.ies		
LUMINAIRE COLOUR TEMPERATURE	4000K		
DESIGN CRITERIA	DESIGN REQUIREMENTS	DESIGN ACHIEVED	
LUMINANCE LEVEL (AVG.)	≥ 4.0	7.02	
LUMINANCE UNIFORMITY RATIO (AVG:MIN.)	≤ 4.0	3.90	

MULTI-USE PATHWAY ILLUMINANCE DESIGN CRITERIA			
LOFTING STREET M.U.P.			
STREET NAME(S)	LOFTING STREET M.U.P.		
PEDESTRIAN ACTIVITY	MEDIUM		
LUMINAIRE TYPE	4.8m PATHWAY POLE - 25W LED TYPE II DIST.		
LUMINAIRE PRODUCT CODE	ARE-EDG-25W-0A-02-E-UL-350-40K (25W LED)		
IES FILE	24B-E.ies		
LUMINAIRE COLOUR TEMPERATURE	4000K		
DESIGN CRITERIA	DESIGN REQUIREMENTS	DESIGN ACHIEVED	
LUMINANCE LEVEL (AVG.)	≥ 5.0	8.44	
LUMINANCE UNIFORMITY RATIO (AVG:MIN.)	≤ 4.0	2.95	

120V SERVICE LOAD ON LOFTING STREET (40A - 120/240V SERVICE PANEL)						
WATTAGE (W)	DCIT. PHASE	EXISTING	REMOVED	PROPOSED	TOTAL No. OF LOADS	TOTAL CONDUCTOR LENGTH (m)
53W	R	-	-	10	10	1708
	B	-	-	10	10	
68W	R	-	-	6	6	
	B	-	-	6	6	
25W	R	-	-	17	17	
	B	-	-	14	14	

CALCULATED VOLTAGE DROP: 1.41% AT STA. 2+803.3

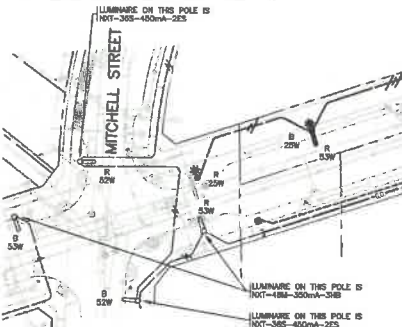
COG AS BUILT  
E1434-02  
C2121-02

DISCLAIMER: WIRELESS TELEPHONE ARE NOTIFICATION ON THE CITY OF COQUITLAM AS BUILT. CONTACT THE WIRELESS SERVICE PROVIDER FOR CURRENT REGULATORY REQUIREMENTS TO THESE UTILITIES.

NOTE: LOCATION OF EXISTING UTILITIES SHOWN ARE APPROXIMATE ONLY AND SHOULD BE CONFIRMED BY A PPE LOCATOR AND MANUAL DIGGING. ALL OF ANY EXISTING STRUCTURES ARE NOT NECESSARILY SHOWN.

THIS PHOTOGRAPH IS SUPPLIED BY THE CITY OF COQUITLAM FOR GENERAL INFORMATION ONLY AND THE ACCURACY OF INFORMATION CONTAINED ON THE DOCUMENT IS NOT GUARANTEED BY THE CITY.

REFER TO PRIMARY ENGINEERING DRAWING No. DB-07452 SL FOR STREETLIGHT INFORMATION ON SHEPHERD AVENUE & MITCHELL STREET



STREETLIGHTING LUMINANCE DESIGN CRITERIA			
LOFTING STREET - SOUTH OF SHEPHERD AVENUE			
STREET NAME(S)	LOFTING STREET - SOUTH OF SHEPHERD AVENUE		
PEDESTRIAN ACTIVITY	MEDIUM		
ROAD CLASSIFICATION	COLLECTOR		
LUMINAIRE TYPE	8.14m DAWT POLE - 68W LED TYPE 3H8 DIST. 7.62m DAWT POLE - 68W LED TYPE 3H8 DIST.		
LUMINAIRE PRODUCT CODE	NXT-484-0-7-3H8-4-0Y-3-UL-5-2H (68W LED) NXT-484-0-7-3H8-3-0Y-3-UL-5-2H (68W LED)		
IES FILE	NXT-484-450mA-3H8-4000K.ies NXT-484-350mA-3H8-4000K.ies		
POLE ARRANGEMENT	STAGGERED		
POLE SPACING (WORST CASE)	38m		
LUMINAIRE COLOUR TEMPERATURE	4000K		
DESIGN CRITERIA	DESIGN REQUIREMENTS	DESIGN ACHIEVED	
LUMINANCE LEVEL (AVG.)	≥ 0.6	0.64	
LUMINANCE UNIFORMITY RATIO (AVG:MIN.)	≤ 3.5	1.70	
LUMINANCE UNIFORMITY RATIO (MAX:MIN.)	≤ 6.0	3.00	
VEILING LUMINANCE RATIO (MAX:AVG)	≤ 0.4	0.29	

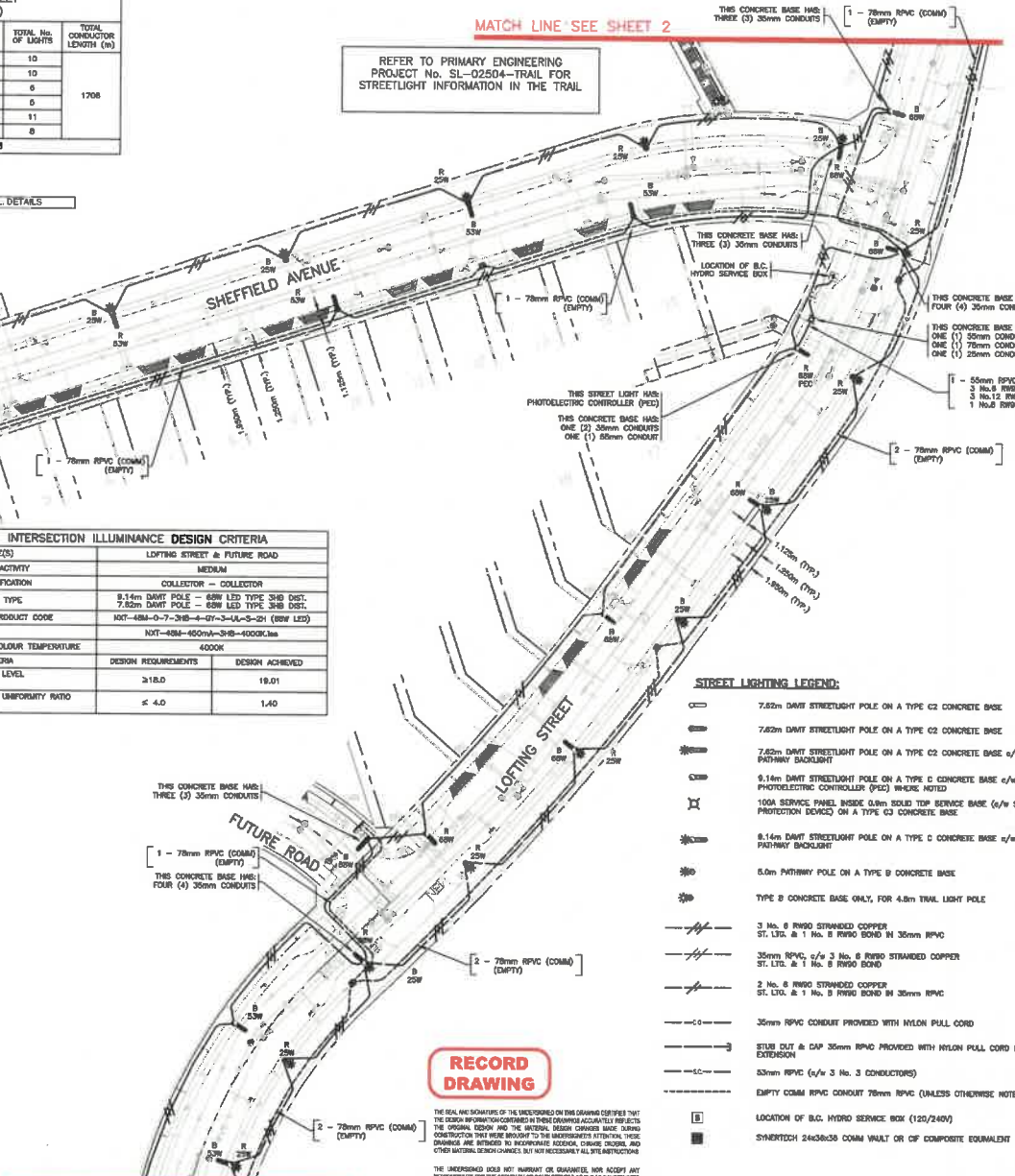
STREETLIGHTING LUMINANCE DESIGN CRITERIA			
SHEPHERD AVENUE			
STREET NAME(S)	SHEPHERD AVENUE		
PEDESTRIAN ACTIVITY	LOW		
ROAD CLASSIFICATION	COLLECTOR		
LUMINAIRE TYPE	7.62m DAWT POLE - 68W LED TYPE 3H8 DIST. 7.62m DAWT POLE - 68W LED TYPE 3H8 DIST.		
LUMINAIRE PRODUCT CODE	NXT-484-0-7-3H8-4-0Y-3-UL-5-2H (68W LED) NXT-484-0-7-3H8-3-0Y-3-UL-5-2H (68W LED)		
IES FILE	NXT-484-450mA-3H8-4000K.ies NXT-484-350mA-3H8-4000K.ies		
POLE ARRANGEMENT	STAGGERED		
POLE SPACING (WORST CASE)	42m		
LUMINAIRE COLOUR TEMPERATURE	4000K		
DESIGN CRITERIA	DESIGN REQUIREMENTS	DESIGN ACHIEVED	
LUMINANCE LEVEL (AVG.)	≥ 0.4	0.53	
LUMINANCE UNIFORMITY RATIO (AVG:MIN.)	≤ 4.0	2.80	
LUMINANCE UNIFORMITY RATIO (MAX:MIN.)	≤ 8.0	6.50	
VEILING LUMINANCE RATIO (MAX:AVG)	≤ 0.4	0.38	

INTERSECTION ILLUMINANCE DESIGN CRITERIA			
SHEPHERD AVENUE & MITCHELL STREET			
STREET NAME(S)	SHEPHERD AVENUE & MITCHELL STREET		
PEDESTRIAN ACTIVITY	LOW		
ROAD CLASSIFICATION	COLLECTOR - COLLECTOR		
LUMINAIRE TYPE	7.62m DAWT POLE - 68W LED TYPE 3H8 DIST. 7.62m DAWT POLE - 68W LED TYPE 3H8 DIST.		
LUMINAIRE PRODUCT CODE	NXT-484-0-7-3H8-3-0Y-3-UL-5-2H (68W LED) NXT-365-0-7-3H8-3-0Y-3-UL-5-2H (68W LED)		
IES FILE	NXT-484-450mA-3H8-4000K.ies NXT-365-450mA-3H8-4000K.ies		
LUMINAIRE COLOUR TEMPERATURE	4000K		
DESIGN CRITERIA	DESIGN REQUIREMENTS	DESIGN ACHIEVED	
LUMINANCE LEVEL (AVG. LUX)	≥ 12.0	12.60	
LUMINANCE UNIFORMITY RATIO (AVG:MIN.)	≤ 4.0	3.71	

INTERSECTION ILLUMINANCE DESIGN CRITERIA			
SHEPHERD AVENUE & LOFTING STREET			
STREET NAME(S)	SHEPHERD AVENUE & LOFTING STREET		
PEDESTRIAN ACTIVITY	MEDIUM		
ROAD CLASSIFICATION	COLLECTOR - COLLECTOR		
LUMINAIRE TYPE	8.14m DAWT POLE - 68W LED TYPE 3H8 DIST. 7.62m DAWT POLE - 68W LED TYPE 3H8 DIST.		
LUMINAIRE PRODUCT CODE	NXT-484-0-7-3H8-4-0Y-3-UL-5-2H (68W LED) NXT-484-0-7-3H8-3-0Y-3-UL-5-2H (68W LED)		
IES FILE	NXT-484-450mA-3H8-4000K.ies NXT-484-350mA-3H8-4000K.ies		
LUMINAIRE COLOUR TEMPERATURE	4000K		
DESIGN CRITERIA	DESIGN REQUIREMENTS	DESIGN ACHIEVED	
LUMINANCE LEVEL (AVG. LUX)	≥ 18.0	19.01	
LUMINANCE UNIFORMITY RATIO (AVG:MIN.)	≤ 4.0	1.40	

\*DESIGN CRITERIA AS PER ULTIMATE DESIGN

INTERSECTION ILLUMINANCE DESIGN CRITERIA			
LOFTING STREET & FUTURE ROAD			
STREET NAME(S)	LOFTING STREET & FUTURE ROAD		
PEDESTRIAN ACTIVITY	MEDIUM		
ROAD CLASSIFICATION	COLLECTOR - COLLECTOR		
LUMINAIRE TYPE	8.14m DAWT POLE - 68W LED TYPE 3H8 DIST. 7.62m DAWT POLE - 68W LED TYPE 3H8 DIST.		
LUMINAIRE PRODUCT CODE	NXT-484-0-7-3H8-4-0Y-3-UL-5-2H (68W LED)		
IES FILE	NXT-484-450mA-3H8-4000K.ies		
LUMINAIRE COLOUR TEMPERATURE	4000K		
DESIGN CRITERIA	DESIGN REQUIREMENTS	DESIGN ACHIEVED	
LUMINANCE LEVEL (AVG. LUX)	≥ 18.0	19.01	
LUMINANCE UNIFORMITY RATIO (AVG:MIN.)	≤ 4.0	1.40	



- STREET LIGHTING LEGEND:**
- 7.62m DAWT STREETLIGHT POLE ON A TYPE C2 CONCRETE BASE
  - 7.62m DAWT STREETLIGHT POLE ON A TYPE C2 CONCRETE BASE
  - 7.62m DAWT STREETLIGHT POLE ON A TYPE C2 CONCRETE BASE c/w 5.0m PATHWAY BACKLIGHT
  - 8.14m DAWT STREETLIGHT POLE ON A TYPE C CONCRETE BASE c/w PHOTOELECTRIC CONTROLLER (PEC) WHERE NOTED
  - 100A SERVICE PANEL INSIDE 0.6m SOLID TOP SERVICE BASE c/w SURGE PROTECTION DEVICES ON A TYPE C3 CONCRETE BASE
  - 8.14m DAWT STREETLIGHT POLE ON A TYPE C CONCRETE BASE c/w 6.0m PATHWAY BACKLIGHT
  - 6.0m PATHWAY POLE ON A TYPE B CONCRETE BASE
  - TYPE B CONCRETE BASE ONLY, FOR 4.8m TRAIL LIGHT POLE
  - 3 No. 8 RWND STRANDED COPPER ST. LTR. & 1 No. 8 RWND BOND IN 30mm RPVC
  - 35mm RPVC c/w 3 No. 8 RWND STRANDED COPPER ST. LTR. & 1 No. 8 RWND BOND
  - 3 No. 6 RWND STRANDED COPPER ST. LTR. & 1 No. 8 RWND BOND IN 30mm RPVC
  - 35mm RPVC CONDUIT PROVIDED WITH NYLON PULL CORD
  - STUB OUT & CAP 35mm RPVC PROVIDED WITH NYLON PULL CORD FOR FUTURE EXTENSION
  - 15mm RPVC c/w 3 No. 3 CONDUCTORS
  - EMPTY CONDUIT PROVIDED WITH 78mm RPVC (UNLESS OTHERWISE NOTED)
  - LOCATION OF B.L.C. HYDRO SERVICE BOX (120/240V)
  - SHERTECH 24x36x36 CONAM VAULT OR CP COMPOSITE EQUIVALENT

**RECORD DRAWING**

THE REAL AND SIGNATURE OF THE UNDERSIGNED ON THIS DRAWING CERTIFY THAT THE DESIGN INFORMATION CONTAINED THEREIN ACCURATELY REPRESENTS THE ORIGINAL DESIGN AND THE UNDERSIGNED DESIGN CHANGES MADE DURING CONSTRUCTION TO BE MADE TO THE INFORMATION CONTAINED IN THESE DRAWINGS. ANY CHANGES MADE TO THESE DRAWINGS ARE THE RESPONSIBILITY OF THE UNDERSIGNED. ANY CHANGES MADE TO THESE DRAWINGS ARE THE RESPONSIBILITY OF THE UNDERSIGNED. ANY CHANGES MADE TO THESE DRAWINGS ARE THE RESPONSIBILITY OF THE UNDERSIGNED.

THE UNDERSIGNED DOES NOT WARRANT OR GUARANTEE, NOR ACCEPT ANY RESPONSIBILITY FOR THE ACCURACY OR COMPLETENESS OF THE INFORMATION PROVIDED HEREIN. THE UNDERSIGNED DOES NOT WARRANT OR GUARANTEE, NOR ACCEPT ANY RESPONSIBILITY FOR THE ACCURACY OR COMPLETENESS OF THE INFORMATION PROVIDED HEREIN. THE UNDERSIGNED DOES NOT WARRANT OR GUARANTEE, NOR ACCEPT ANY RESPONSIBILITY FOR THE ACCURACY OR COMPLETENESS OF THE INFORMATION PROVIDED HEREIN.

COG AS BUILT NUMBER  
E1434-02  
C2121-02

**PRIMARY**  
BC ONE CALL  
CALL BEFORE YOU DIG  
1-800-474-8000 OR BY  
CELLULAR #6888  
MANICOUVER AREA  
257-1840

CALL AT LEAST TWO FULL WORKING DAYS BEFORE YOU PLAN TO DIG



REVISIONS		
R7	ISSUED FOR RECORD	2022/03/30
R6	SHEPHERD AND ROAD A LIGHTS UPDATED, RE-FC	2020/10/15
R5	ISSUED FOR CONSTRUCTION	2020/10/28
R4	ISSUED FOR REVIEW	2020/04/23
R3	ISSUED FOR REVIEW	2020/02/14
R2	ISSUED FOR REVIEW	2019/11/27
R1	ISSUED FOR REVIEW	2019/11/28
REV.	DESCRIPTION	

CLIENT: CITY OF COQUITLAM  
PROJECT: SMILING CREEK NEIGHBORHOOD - PARCEL 16A STREET LIGHTING

SCALE: 1:300  
DESIGN BY: SD  
PLOT DATE: 2022-03-03

DRAWING TITLE: Street Lighting Site Plan Sheet 3  
DRAWING NUMBER: SL-02504  
REVISION: 7