

ALL WIRING COPPER UNLESS NOTED OTHERWISE

ALL SPORTSFIELD POLES AND ASSOCIATED ASSEMBLIES, METERING KIOSK AND PATHWAY POLES MUST BE FACTORY COLOURED BLACK (RAL 9005)

TRENCHING IN ALL AREAS ADJACENT EXISTING TRERES MUST BE COORDINATED WITH, AND OBSERVED BY, THE CITY ARBORIST TO MINIMIZE ROOT ZONE DISTURBANCE AND TO MINIMIZE SOIL COMPACTION

CONTRACTOR TO OBTAIN AND SUBMIT GEOTECH ENGINEER'S CBCS SCHEDULES TO MUSCO LIGHTING FOR THEIR USE IN DESIGNING SPORTSFIELD FLOODLIGHT POLE BASE FOUNDATIONS

CONDUITS ROUTED AROUND FIELD TO BE INSTALLED NO DEEPER THAN 600mm TO AVOID GEOGRID, MOUNTED APPROXIMATELY 750mm DEEP. HAND DIG IN ALL AREAS TO CONFIRM GEOGRID BURIAL DEPTH. ANY DAMAGE TO GEOGRID MUST BE REPAIRED AT NO COST TO OWNER

CONTRACTOR TO OBTAIN AND SUBMIT GEOTECH ENGINEER'S CBCS SCHEDULES TO MUSCO LIGHTING FOR THEIR USE IN DESIGNING SPORTSFIELD FLOODLIGHT POLE BASE FOUNDATIONS

LOCATE ALL CONDUITS IN SOD AREAS WHERE POSSIBLE. ONLY WHERE UNDER SOD IS NOT POSSIBLE CAN CONDUITS BE ROUTED UNDER ASPHALT PATHWAY. UNDER NO CIRCUMSTANCE CAN CONDUITS BE LOCATED UNDER PLAY/FIELD SURFACES

SUPPLY AND INSTALL SPORTSFIELD LIGHTING & CONTROL SYSTEM AS DESIGNED AND MANUFACTURED BY MUSCO LIGHTING. OBTAIN QUOTE FROM MUSCO LIGHTING (CONTACT: MARK PACKER - TEL: 604-353-4500). ALL SUPPLY AND INSTALLATION OF SPORTSFIELD LIGHTING TO BE CLOSELY COORDINATED WITH MUSCO LIGHTING AT CONTRACT AWARD. POLE LAYOUT MUST BE VERIFIED WITH FINAL MUSCO LIGHTING DRAWINGS AND WITH JARVIS ENGINEERING PRIOR TO CONCRETE BASE INSTALLATION.

ELECTRICAL CONTRACTOR RESPONSIBLE FOR COORDINATION AND INSTALLATION OF TEMPORARY POWER. ALLOW FOR IN TENDER AND CONTACT BC HYDRO AT CONTRACT AWARD.

ALL CORING THROUGH STRUCTURAL WALLS FOR ELECTRICAL CONDUITS IS THE RESPONSIBILITY OF THE ELECTRICAL CONTRACTOR. ALL CORING MUST BE X-RAYED/SCANNED PRIOR TO CORING (AT THE ELECTRICAL CONTRACTOR'S EXPENSE). ALL CORING MUST BE APPROVED BY THE STRUCTURAL CONSULTANT.

ALL CONDUITS/DUCTS TO BE FULLY CONCEALED AND ROUTED THROUGH CONCRETE BASES TO INSIDE OF POLES & KIOSK. ANY EXPOSED CONDUITS/DUCTS WILL BE REMOVED AND REINSTALLED AT THE CONTRACTOR'S COST. CLOSELY ACCOUNT FOR QUANTITY AND SIZE OF ALL CONDUITS/DUCTS PRIOR TO ORDERING/DESIGNING CONCRETE BASES.

ALL SPORTSFIELD LIGHTING STRUCTURES SHALL BE EQUIPPED WITH LIGHTNING PROTECTION MEETING CAN/CSA B72 STANDARDS. CONTRACTOR SHALL SUPPLY AND INSTALL A GROUND ROD OF NOT LESS THAN 16mm IN DIAMETER AND 2.44m IN LENGTH, WITH A MINIMUM OF 3m EMBEDMENT. GROUND ROD SHOULD BE CONNECTED TO THE STRUCTURE BY A COPPER MAIN DOWN CONDUCTOR WITH A MINIMUM SIZE OF #2 FOR POLES WITH LESS THAN 22.9m MOUNTING HEIGHT AND 2/O FOR POLES WITH MORE THAN 22.9m MOUNTING HEIGHT. CONFIRM INTEGRAL LIGHTNING PROTECTION PRIOR TO ORDERING EQUIPMENT AND PRIOR TO ROUGH-IN.

PROVIDE SPARE BRACKETS ON MUSCO POLES FOR FUTURE WIFI DEVICES

THE CONTRACTOR (AT THEIR COST) SHALL REPLACE ALL CONCRETE SIDEWALK PANELS, PAVING STONES, AND ASPHALT REMOVED DURING CONSTRUCTION. ONLY COMPLETE SECTIONS OF CONCRETE PANELS TO BE REPLACED.

PROVIDE ALL FINAL LOCATIONS OF SPORTSFIELD POLE FOUNDATIONS, KIOSK FOUNDATIONS, AND IN-GROUND PULL BOX LOCATIONS TO CONSULTANT FOR REVIEW AND APPROVAL PRIOR TO ROUGH-IN

ELECTRICAL CONTRACTOR MUST COORDINATE WITH OWNER ANY ADDITIONAL CONTROLS THAT REQUIRE INTERFACING WITH THE MUSCO CONTROL SYSTEM AND SUPPLY AND INSTALL AS SUCH. ELECTRICAL CONTRACTOR TO COORDINATE ALL INTERFACE DETAILS BETWEEN OWNER'S CONTROLS AND MUSCO. CONFIRM AND IMPLEMENT ALL PROGRAMMING DETAILS WITH THE OWNER PRIOR TO PROJECT SUBSTANTIAL COMPLETION.

**CHECK BEFORE YOU DIG**

PRIOR TO ANY EXCAVATING, THE ELECTRICAL CONTRACTOR SHALL REVIEW ALL ELECTRICAL, MECHANICAL, MUNICIPAL AND CIVIL DRAWINGS FOR EXISTING UNDERGROUND SERVICES AND RIGHT OF WAYS. CONTACT BC ONE CALL TO REVIEW THEIR RECORDS OF THE AREA. THE EXACT LOCATION OF ANY UNDERGROUND FACILITIES SHALL BE DETERMINED AND MARKED BY ONE OF THE PRIVATE LINE LOCATOR SERVICES LISTED BELOW. PROTECT THE EXISTING SERVICES DURING ALL EXCAVATION AND CONSTRUCTION. THE ELECTRICAL CONTRACTOR SHALL ALLOW FOR ALL COSTS IN THEIR TENDER PRICE.

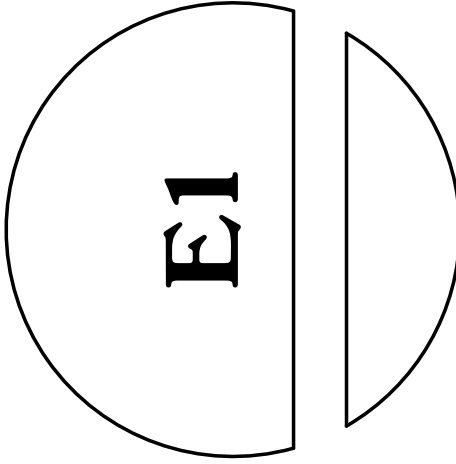
BC ONE CALL: 1.800.474.6886  
ONE CALL LOCATORS CANADA LTD.: 604.575.9299  
WESTERN UTILITY LOCATE SERVICES: 604.576.9458  
ON-THE-MARK LOCATES: 250.769.0369  
TEL: 250.769.0369  
FAX: 604.504.0751  
VICTORIA, B.C.  
TEL: 604.504.0751  
FAX: 250.769.0369  
KELOWNA, B.C.  
TEL: 250.769.0369  
FAX: 604.504.0751

SYMBOL LEGEND	
	SPORTSFIELD FLOODLIGHT POLE c/w FLUSH MOUNTED RECEPTACLE, BRACKET FOR FUTURE WIRELESS ACCESS POINT DEVICE (HEIGHT TO BE CONFIRMED WITH CITY) AND SECURITY LIGHTS. REFER TO PLANS AND MUSCO LIGHTING DRAWINGS FOR ADDITIONAL ELECTRICAL AND MOUNTING DETAILS. REFER TO PLAN FOR RECEPTACLE AND SECURITY LIGHT ORIENTATION.
	LARGE CONCRETE TYPE 5686 POWER JUNCTION BOX c/w RECESSED PADLOCK OPTION, STEEL CHECKER PLATE SECURITY LID, MARKED 800V, 208V or 0 COMM AS APPLICABLE (THIS EXAMPLE 800V)
	CONCRETE TYPE 37 POWER JUNCTION BOX c/w RECESSED PADLOCK OPTION, STEEL CHECKER PLATE SECURITY LID, 800V, 208V or 0 COMM AS APPLICABLE (THIS EXAMPLE 800V)
	LED PATHWAY LIGHT (LIMEC URBANSCAPE SERIES) DECORATIVE STEEL POLE LIMEC CAT# TM6-15 OR BA-BKTX or ENGINEER APPROVE ALTERNATE) AND CUSTOM SONOTUBE REINFORCED CONCRETE BASE. POLE TO BE c/w TCT WIRESENTRY ANTI-THEFT DEVICE AND HANDHOLE COVER c/w TAMPER PROOF HARDWARE IN FACTORY FINISHED BLACK.

- GENERAL NOTES**
- TWO SIDED ELECTRICAL KIOSK FOR BC HYDRO INCOMING SERVICE AND METERING. KIOSK C/A 1.0M DEEP CONCRETE PAD ON EITHER SIDE.
  - THE ELECTRICAL CONTRACTOR MUST ARRANGE TIMING OF SERVICE CONNECTION WITH CITY OF COQUITLAM REPRESENTATIVE AND GENERAL CONTRACTOR.
  - SPORTSFIELD POLES, POLE TOP LUMINAIRE ASSEMBLIES, INTERNAL WIRING HARNESSSES ELECTRICAL COMPONENT ENCLOSURES AND PRE-CAST CONCRETE BASES SHALL BE ENGINEERED AND SUPPLIED BY MUSCO INSTALL AS PER ASSEMBLY INSTRUCTIONS.
  - NO CONDUCTOR SPLICES SHALL BE PERMITTED IN JUNCTION BOXES EXCEPT WHERE NOTED. CONDUCTORS SHALL RUN CONTINUOUS WITH IN SPLICES FROM THE LIGHTING CONTROL PANEL TO BREAKERS IN ELECTRICAL COMPONENT ENCLOSURES ON EACH POLE.
  - RECEPTACLE MOUNTED ON SPORTSFIELD POLES SHALL BE MOUNTED IN A GFCI HANDHOLE COVER ASSEMBLY MOUNTED AT 2.1m ABOVE FINISHED GRADE, IN A POLE HANDHOLE (MUSCO CAT #SSS-021 or MUSCO APPROVED ALTERNATE) c/w GFCI PROTECTION AND IN-USE WEATHERPROOF COVER. RECEPTACLES TO BE CONNECTED TO PROGRAMMABLE TIMECLOCK (REFER TO KIOSK DETAILS ON E4).
  - IDENTIFY ALL CIRCUITS IN JUNCTION BOXES, HANDHOLES, ENCLOSURES AND ALL OTHER ACCESS POINTS WITH SLEEVE TYPE WIRE MARKERS. EACH FEEDER SHALL BE LABELED WITH THE POLE & CIRCUIT NO. (IE: T484-1/845, T364-13/16/12, 05c).
  - ALL CONDUITS TO RE INSTALLED c/w WARNING TAPE AS PER MMCD.
  - MINIMUM CONDUIT SIZE SHALL BE 25mm (1") UNLESS NOTED OTHERWISE. ALL CONDUITS TO BE RIGID PVC.
  - PROVIDE T-DRAIN FITTINGS ON ALL CONDUITS ENTERING JUNCTION BOXES. PROVIDE DRAINAGE FROM T-DRAINS TO FIELD DRAINAGE SYSTEM. COORDINATE WITH CIVIL CONTRACTOR (TYPICAL FOR ALL CONDUITS).
  - FINAL ROUTING OF SERVICE CONDUITS TO LIGHTING POLE LOCATIONS TO BE CONFIRMED ON SITE PRIOR TO TRENCHING.
  - ALL WORK MUST CONFORM TO THE CURRENT VERSION OF MASTER MUNICIPAL CONSTRUCTION DOCUMENTS (MMCD), CITY OF COQUITLAM SUPPLEMENTARY SPECIFICATIONS & DRAWINGS TO THE MMCD AND SPECIFICATIONS, THE CITY OF COQUITLAM CONSTRUCTION DOCUMENTS AND SPECIFICATIONS (WHERE APPLICABLE), THE CANADIAN ELECTRICAL CODE, AND ALL AMENDMENTS AS ISSUED BY THE ELECTRICAL SAFETY BRANCH OF BRITISH COLUMBIA.
  - ALL EQUIPMENT MUST BE NEW, CSA APPROVED, AND MUST BE SUBJECT TO THE APPROVAL OF THE ELECTRICAL SAFETY INSPECTOR.
  - ASIDE FROM FIELD AND TENNIS COURT POLES, LOCATIONS OF ALL EQUIPMENT INCLUDING CONDUIT AND JUNCTION BOXES, ARE DIAGRAMMATIC ONLY. EXACT LOCATIONS OF ALL EQUIPMENT MUST BE DETERMINED BY THE CONTRACTOR IN THE FIELD AND BE CONFIRMED BY THE CITY OF COQUITLAM PRIOR TO CONSTRUCTION.
  - CONDUITS MUST BE RIGID PVC AND MANUFACTURED IN ACCORDANCE WITH CSA C22.2 No.211.2. UNLESS OTHERWISE NOTED ON SHEETS.
  - EMPTY CONDUITS MUST HAVE A NYLON PULLSTRING INSTALLED IN THEM AND CAPPED AT BOTH ENDS.
  - ALL EQUIPMENT MUST BE BONDED AND GROUNDED AS REQUIRED BY CODE.
  - INSTALL R.PVC BAR IN ALL JUNCTION BONES AND TY-RAP CONDUCTORS TO BAR.
  - ALL CONDUCTORS SHALL BE STRANDED COPPER WITH XLPE INSULATION.
  - EXACT LOCATION OF ALL BC HYDRO SERVICE DUCTS, POLES, MANHOLES, PULLBOXES, AND CONNECTION POINTS TO BE CONFIRMED WITH RESPECTIVE UTILITIES DIRECTLY PRIOR TO COMMENCING INSTALLATION. OBTAIN SUPPLY AUTHORITY SERVICING DESIGN DRAWINGS PRIOR TO PROCEEDING WITH ANY WORK. CONCRETE ENCASE UNDERGROUND DUCTS AS DIRECTED BY RESPECTIVE UTILITY. COORDINATE COMPLETE INSTALLATION WITH SUPPLY AUTHORITY UTILITIES.
  - CONTRACTOR TO EXTEND BC HYDRO DUCTS TO SERVICE CONNECTION POINTS AS DIRECTED BY LOCAL UTILITY. EXACT LOCATION OF SERVICE CONNECTION POINTS TO BE CONFIRMED PRIOR TO INSTALLATION OF ANY CONDUIT.
  - BC HYDRO PAD MOUNTED KIOSK, SUPPLIED AND INSTALLED BY BC HYDRO. CONCRETE PAD AND PROTECTIVE POSTS TO BE SUPPLIED AND INSTALLED BY CONTRACTOR TO HYDRO SPECIFICATIONS.
  - ALL FOUNDATION, CURB, AND BUILDING WALL REBAR, METAL SIDING, FENCES, OR ALL OTHER EXPOSED METAL AND/OR CONDUCTIVE STRUCTURES WITHIN 3.0m (10') OF BC HYDRO TRANSFORMER CONCRETE PAD MUST BE BONDED TO BC HYDRO DISTRIBUTION STANDARDS. A GROUNDING TEST AND REPORT MUST BE PROVIDED BY THE ELECTRICAL CONTRACTOR TO BC HYDRO FOR APPROVAL PRIOR TO BC HYDRO MAKING THE FINAL SERVICE CONNECTION.
  - THE ELECTRICAL CONTRACTOR MUST COORDINATE ALL WORK AROUND BC HYDRO SERVICE KIOSKS AND SERVICE BOXES WITH THE LOCAL BC HYDRO REPRESENTATIVE.
  - MOUNT POLES S3 & S4 ON EXISTING ANCHOR BOLTS, INSTALLED IN WALL STRUCTURE. DIMENSIONS SHOWN ARE TO INFORM MUSCO DESIGN CALCULATIONS ONLY.

DRAWING LIST	
E1	COVER PAGE
E2	OVERALL SITE PLAN
E3	FIELD PLAN - LIGHTING, POWER AND LOW TENSION
E4	TENNIS COURT PLAN - LIGHTING, POWER AND LOW TENSION
E5	DETAILS
E6	POLE BASE SECTIONS
E7	DETAILS AND PANEL SCHEDULES
E8	SPORTSFIELD LIGHTING CONSULTANT - POLE DESIGN
E9	SPORTSFIELD LIGHTING CONSULTANT - ILLUMINATION SUMMARY
E10	SPORTSFIELD LIGHTING CONSULTANT - ILLUMINATION SUMMARY

COVER PAGE	
JOB NO.	24026
SCALE	24026
DATE	2025.05.05



**BURKE MOUNTAIN ATHLETIC PARK  
FIELD AND SPORT TRACK**

3390 & 3400 DAVID AVENUE,  
COQUITLAM, B.C.

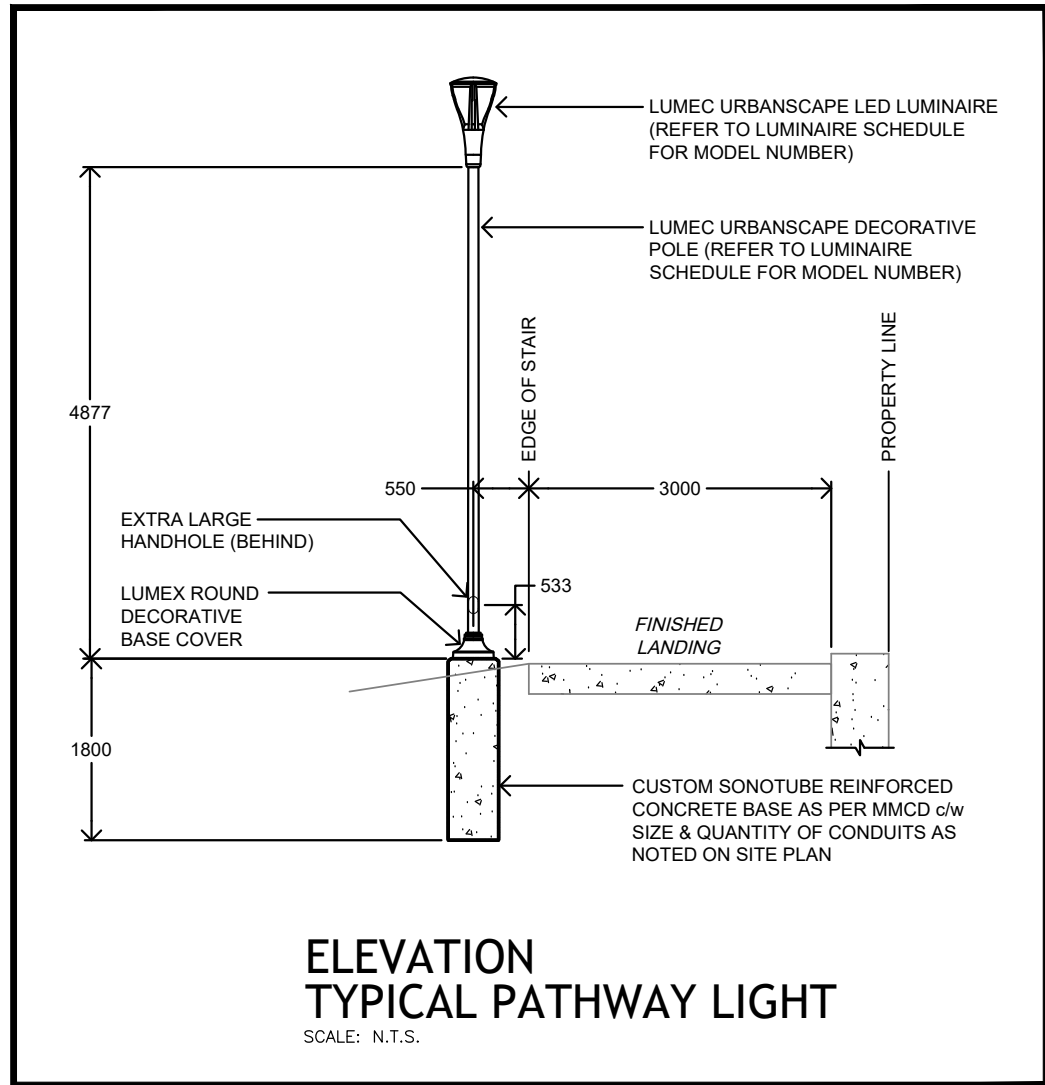
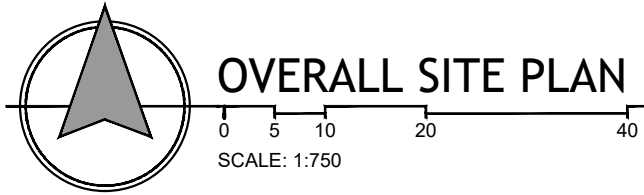
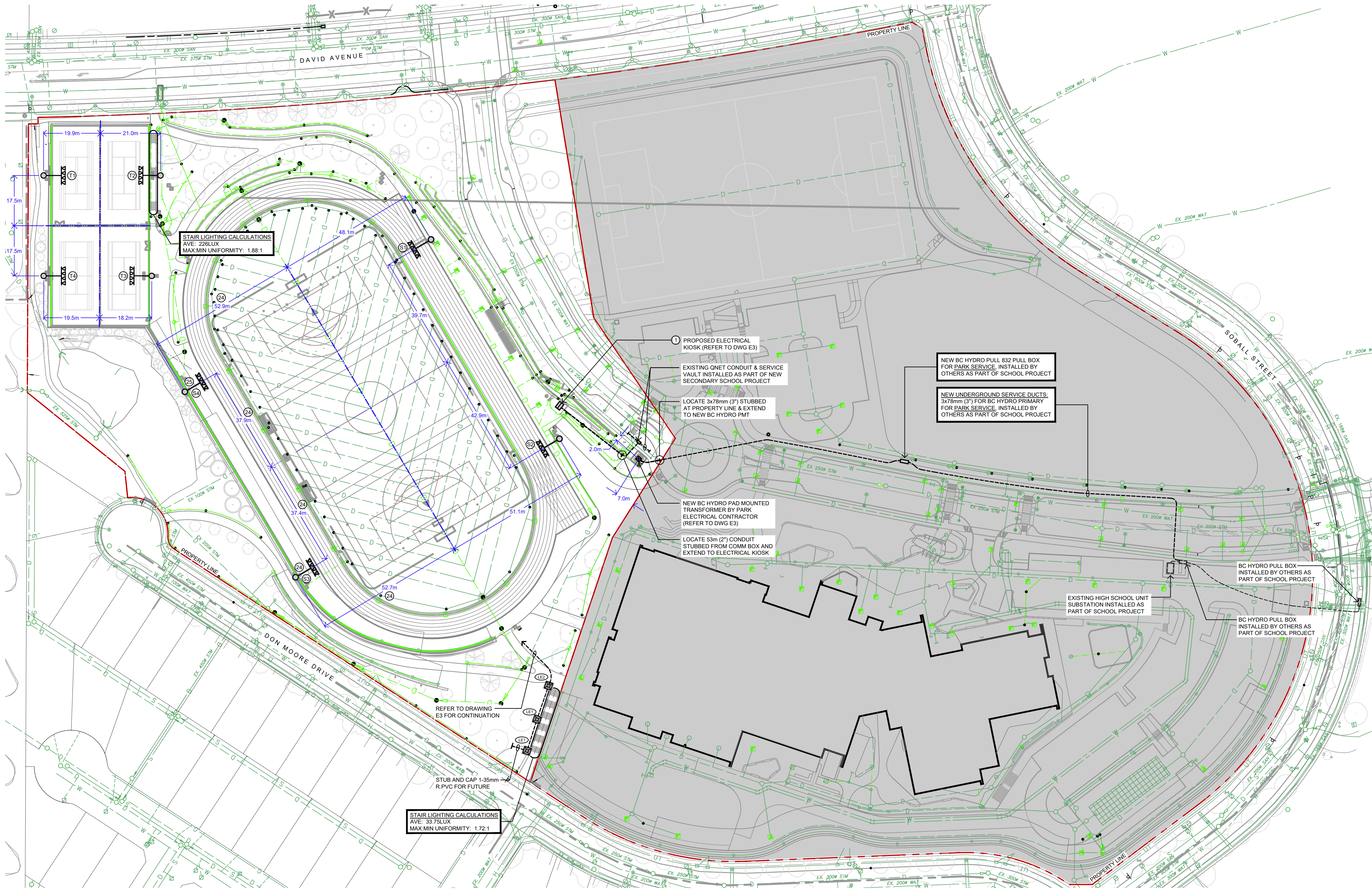
REVISIONS	
NO.	DESCRIPTION
1	50% DETAILED DESIGN
2	60% DETAILED DESIGN
3	70% DETAILED DESIGN
4	80% DETAILED DESIGN
5	90% DETAILED DESIGN
6	95% DETAILED DESIGN
7	DRAFT 100% DETAILED DESIGN
8	100% DETAILED DESIGN
9	ISSUED FOR FINAL CITY REVIEW
10	ISSUED FOR RPT

**JARVIS  
ENGINEERING  
CONSULTANTS**

500 - 12988 South Fraser Way Abbotsford, B.C. V2S 2A6  
T: 604.850.0447 F: 604.850.0580 www.jarviseng.com  
CIBC FINANT TO PRACTICE #100111

604 793 9445 2 - 9360 Mill Street Chilliwack BC, V2P 4N2





REFER TO DRAWINGS E1 FOR ADDITIONAL NOTES AND LEGEND

DRAWING NAME

## OVERALL SITE PLAN

JOB NO.	24026
SCALE	N.T.S.
DATE	2025.05.05

NO.	DATE	DESCRIPTION
1	2024.04.15	50% DETAILED DESIGN
2	2024.05.09	75% DETAILED DESIGN
3	2024.05.22	80% DETAILED DESIGN
4	2024.07.09	75% COSTING DESIGN
5	2024.11.05	90% DETAILED DESIGN
6	2024.11.11	DRAFT 100% DETAILED DESIGN PACKAGE
7	2024.12.16	100% DETAILED DESIGN
8	2025.01.17	ISSUED FOR FINAL CITY REVIEW
9	2025.04.30	ISSUED FOR FINAL CITY REVIEW
10	2025.05.05	ISSUED FOR RPT

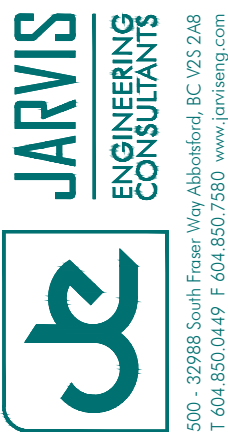
DRAWING NAME

## BURKE MOUNTAIN ATHLETIC PARK FIELD AND SPORT TRACK

3390 & 3400 DAVID AVENUE,  
COQUITLAM, B.C.

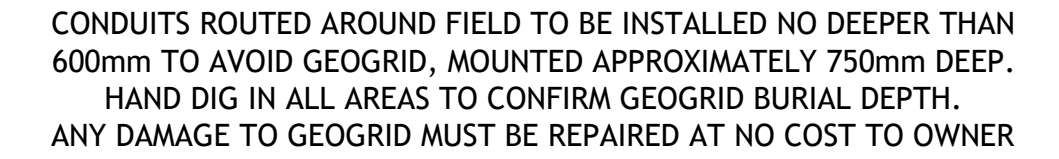
604 793 9445

2 - 9360 Mill Street Chilliwack BC, V2P 4N2



soarchitects.com





**FIELD PLAN**  
LIGHTING, POWER AND LOW TENSION

0 2.5 5 10

SCALE: 1:300

DRAWING NAME:		<h1 style="text-align: center;">FIELD PLAN</h1> <h1 style="text-align: center;">LIGHTING, POWER</h1> <h1 style="text-align: center;">AND LOW TENSION</h1>
JOB NO.	24026	
SCALE		
DATE	2025.05.05	

# E

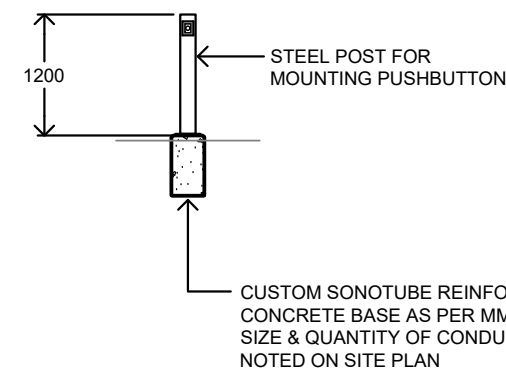
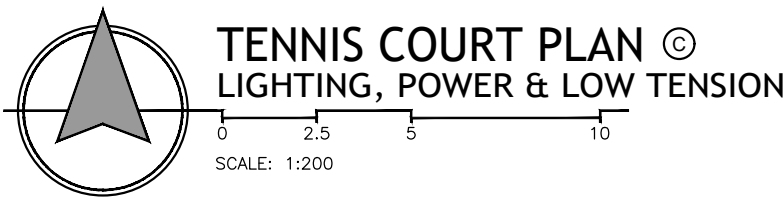


**JARVIS**  
ENGINEERING  
CONSULTANTS

5600 - 32988 South Fraser Way Abbotsford, BC V2S 2A8  
T 604.850.0449 F 604.850.7580 www.jarviseng.com

soarchitects.com





**ELEVATION**  
**TENNIS COURT CONTROL POST**  
SCALE: N.T.S.

## NOTES

- (A) SUPPLY & INSTALL A 1.2m (48") HIGH STEEL POST COLOURED BLACK (RAL 9005). MOUNT MUSCO SUPPLIED PUSH-OUT FOR TENNIS COURT LIGHTING CONTROL. COORDINATE ALL DETAILS WITH MUSCO REFER TO ORDERING POLE AND BASE. REFER TO CONTROL SYNOPSIS ON DRAWING E5 FOR DETAIL ON THIS DRAWING.
- (B) INSTALL & WIRE MUSCO SUPPLIED IP66 AMBER STROBE LIGHT FOR TENNIS COURT LIGHTING CONTROL. COORDINATE ALL DETAILS WITH MUSCO REFER TO ORDERING POLE AND BASE. REFER TO CONTROL SYNOPSIS ON DRAWING E5.
- (C) TENNIS COURT POLE BASES T11 & T2: 762mm x 430mm  
TENNIS COURT POLE BASES T3 & T4: 762mm x 430mm  
(REFER TO MUSCO BASE DETAIL ON DRAWING E5 FOR ADDITIONAL DETAILS).  
REFER ALSO TO DRAWING E6 FOR BURIAL DEPTH DETAILS.

CONDUITS ROUTED AROUND FIELD TO BE INSTALLED NO DEEPER THAN 600mm TO AVOID GEOGRID, MOUNTED APPROXIMATELY 750mm DEEP. HAND DIG IN ALL AREAS TO CONFIRM GEOGRID BURIAL DEPTH. ANY DAMAGE TO GEOGRID MUST BE REPAIRED AT NO COST TO OWNER

REFER TO DRAWINGS E1 FOR ADDITIONAL NOTES AND LEGEND

REVISIONS		DESCRIPTION	
NO.	DATE		
1	2024.04.15	60% DETAILED DESIGN	
2	2024.05.09	75% DETAILED DESIGN	
3	2024.05.22	75% DETAILED DESIGN	
4	2024.07.09	75% COSTING DRAWINGS	
5	2024.11.05	90% DETAILED DESIGN	
6	2024.12.11	95% DETAILED DESIGN	
7	2024.12.16	PACKAGE	
8	2026.01.17	DETAILED DESIGN	
9	2026.04.30	ISSUED FOR FINAL CITY REVIEW	
10	2026.05.05	ISSUED FOR RFP	

DRAWING NAME	
TENNIS COURT PLAN	
LIGHTING, POWER AND	
LOW TENSION	
JOB NO.	24026
SCALE	
DATE	2025.05.05

**BURKE MOUNTAIN ATHLETIC PARK  
FIELD AND SPORT TRACK**  
3390 & 3400 DAVID AVENUE,  
COQUITLAM, B.C.

DRAWING NAME

**JARVIS**  
ENGINEERING  
CONSULTANTS

5000 - 32988 South Fraser Way Abbotsford, BC V2S 2A8  
T 604.850.0449 F 604.850.7580 E [info@jarviseng.com](mailto:info@jarviseng.com)

500 - 32988 South Fraser Way Abbotsford, BC V2S 2A8  
T 604.850.0449 F 604.850.7580 [www.janiseng.com](http://www.janiseng.com)



SPORTSFIELD LIGHTING CONTROL SYNOPSIS

THE FOLLOWING IS A SAMPLE OF LIGHTING CONTROLS. THE FINAL SEQUENCE AND TIME LIMITS MUST BE CONFIRMED WITH THE CITY AND COORDINATED WITH MUSCO AT THE BEGINNING OF CONSTRUCTION.

1.

LIGHTING SCHEDULED TO BE ACTIVE FROM 5PM TO 10PM.

2.

TO TURN LIGHTS ON USERS WILL PRESS ELECTRICAL KIOSK MOUNTED PUSHBUTTON.

3.

THERE WILL BE 3 LIGHT LEVELS AVAILABLE TO BE SCHEDULED: 100%, 50% AND 25%.

4.

30-MINS BEFORE SET SCHEDULED OFF TIME, THE LIGHTING WILL BE REDUCED TO 50%.  
15-MINS AFTER THAT, LIGHTING WILL BE REDUCED TO 25%.  
15-MINS AFTER THAT (10PM), LIGHTING WILL BE TURNED OFF.

TENNIS COURT LIGHTING CONTROL SYNOPSIS

THE FOLLOWING IS A SAMPLE OF LIGHTING CONTROLS. THE FINAL SEQUENCE AND TIME LIMITS MUST BE CONFIRMED WITH THE CITY AND COORDINATED WITH MUSCO AT THE BEGINNING OF CONSTRUCTION.

1.

LIGHTING SCHEDULED TO BE ACTIVE FROM 5PM TO 10PM.

2.

TO TURN LIGHTS ON USERS WILL PRESS POST-MOUNTED PUSHBUTTON (ALL 4 LIGHT POLES ON)

3.

AFTER 25-MINS, STROBE LIGHT MOUNTED TO THE TENNIS COURT LIGHT POLE WILL FLASH TO WARN USERS TIME LIMIT IS IMMINENT. USERS CAN THEN PRESS PUSHBUTTON AGAIN TO EXTEND LIGHTING TIME OR LIGHTS WILL SIMPLY GO OFF AFTER 25-MINS.

4.

25-MINS BEFORE SET SCHEDULED OFF TIME (10PM IN THIS EXAMPLE) THE STROBE LIGHT WILL FLASH. REGARDLESS OF IF PUSHBUTTON IS PRESSED AGAIN LIGHTING WILL GO OFF AT 10PM.

CONTROL NOTES

1

SPORTSFIELD LIGHTING CONTROL SCHEDULING MUST BE COORDINATED WITH THE OWNER AND FULLY PROGRAMMED PRIOR TO ENGINEERS FINAL REVIEW FOR OCCUPANCY.

2

WHEN SPORTSFIELD LIGHTING IS TURNED OFF (EITHER MANUALLY OF SCHEDULED) THE LIGHTING MUST BE DIMMED TO 25% OUTPUT FOR A DURATION TO BE DETERMINED BY THE OWNER BEFORE COMPLETELY TURNING OFF. COORDINATE PROGRAMMING WITH THE OWNER AND MUSCO PRIOR TO SHOP DRAWING SUBMISSION.

3

SPORTS FIELD LIGHTING & PATHWAY LIGHTING TO BE ALL CONTROLLED INDEPENDENTLY.

ALL ELECTRICAL EQUIPMENT TO BE MOUNTED TO 19mm(3/4") FIRE RESISTANT PLYWOOD or PLYWOOD PAINTED w/ ULC APPROVED FIRE RESISTANT PAINT

FOR CONDUIT ROUTINGS, SIZES & QUANTITIES REFER TO SITE PLANS & SINGLE LINE DIAGRAM

STUB CONDUITS MIN. 2" ABOVE FINISHED FLOOR OF KIOSK. ALL CONDUITS TO BE CONCEALED IN CONCRETE BASE.

ELECTRICAL KIOSK EQUIPMENT LIST

Item	designation	Item	designation
1	BC HYDRO MAIN INCOMING BUSSED WIREWAY	13	CABLE CLAMPS FOR THE SUPPORT OF BC HYDRO SERVICE CABLES SHALL BE CSA TYPE, 600V CLASS, SEPARATELY MOUNTED FOR THE SUPPORT OF INDIVIDUAL SERVICE CABLE. THE CABLE CLAMPS SHALL HAVE AN INTEGRAL CUSHIONING LAYER TO PROTECT THE CABLE INSULATION FROM DAMAGE CAUSED BY THERMAL CYCLING OF LOAD DEMANDS. THE CABLE CLAMPS SHALL BE INSTALLED IN 1 1/2" x 1 1/2" C-CHANNEL, MOUNTED ON A SLOT ADJUSTABLE ANGLE BRACKET, SUITABLE FOR FACING EITHER OUTWARD OR UPWARD. SLOTTED ANGLES SHALL PROVIDE BACKFORTH ADJUSTMENT OF THE C-CHANNEL WITHIN 100mm OF FRONT OR BACK OF THE ENCLOSURE. THE ELECTRICAL CONTRACTOR MUST SUPPLY ALL THREADED HARDWARE AND COMPONENTS REQUIRED FOR THE SUPPORT OF BC HYDRO SERVICE CABLES (REFER TO BC HYDRO STANDARD ES54 S3-03-06).
2	MAIN BREAKER AND BC HYDRO C/T SECTION: 100A, 347/600V, 3Ø, 4W	14	PROVIDE EXTERNAL KEYPAD or PUSHBUTTON c/w COVER ON SIDE OF KIOSK (CONFIRM DETAILS WITH CITY AND COORDINATE WITH MUSCO AT START OF CONSTRUCTION)
3	13 JAW METER BASE c/w TESTBLOCK TO BC HYDRO STANDARDS, SUPPLIED AND INSTALLED BY ELECTRICAL CONTRACTOR. ELECTRICAL CONTRACTOR MAY APPLY FOR SPECIAL PERMISSION TO MOUNT REVENUE METER INSIDE KIOSK ENCLOSURE (REFER TO BC HYDRO REVENUE METERING GUIDE).	15	LINE VOLTAGE ASTRONOMICAL TIME SWITCH c/w ON/OFF OVERRIDE (LEVITON VPT24-1P-W or APPROVED EQUAL) FOR PATHWAY LIGHTING NOT INSTALLED ON SPORTSFIELD LIGHTING POLES. PROGRAM SWITCH TO AUTOMATICALLY TURN LIGHTING ON & OFF AS DIRECTED BY CITY.
4	GROUNDING STUD MUST BE SUPPLIED AS INDICATED AND INSTALLED PER MANUFACTURER'S INSTRUCTIONS. THE FOLLOWING GROUNDING STUD IS ACCEPTABLE TO BC HYDRO: HC-30029-2 FABRICATED BY MACLEAN POWER SYSTEMS.	16	COMMERCIAL SPECIFICATION GRADE DUPLEX 15A, 120V, GFCI PROTECTED RECEPTACLE DEDICATED FOR IRRIGATION CONTROL c/w STAINLESS STEEL COVERPLATE (TYPICAL OF 2)
5	PANEL '6A' 100A, 347/600V, 3Ø, 4W (REFER TO PANEL SCHEDULE ON THIS DRAWING)	17	SPACE RESERVED FOR IRRIGATION CONTROLLER (MIN 380mm x 380mm)
6	TRANSFORMER: 15KVA, 600-120/208V (FOR PANEL '2A')	18	LINE VOLTAGE ASTRONOMICAL TIME SWITCH c/w ON/OFF OVERRIDE (LEVITON VPT24-1P-W or APPROVED EQUAL) FOR SPORTSFIELD MOUNTED RECEPTACLES. PROGRAM SWITCH TO AUTOMATICALLY TURN LIGHTING ON & OFF AS DIRECTED BY CITY.
7	PANEL '2A' 100A, 120/208V, 3Ø, 4W (FED WITH 3P-50A BREAKER) (REFER TO PANEL SCHEDULE ON THIS DRAWING)		
8	SPORTSFIELD LIGHTING CONTROL & MONITORING CABINET COMMUNICATION CELLULAR CABINET		
9	1" LINEAR LED LUMINAIRE c/w OCCUPANCY SENSOR or ENGINEER APPROVED ALTERNATE MEANS OF ILLUMINATION		
10	MAIN TELEPHONE & TELEVISION TERMINAL BOARD (MTTB) 36"W x 96"H x 3"D PAINTED PLYWOOD		
11	SURFACE MOUNTED 500W FORCE FLOW HEATER		
12	COMMERCIAL SPECIFICATION GRADE RECEPTACLE (QUAD or DUPLEX AS SHOWN) c/w STAINLESS STEEL COVERPLATE.		

KIOSK GENERAL NOTES

1.

KIOSK TO BE CSA TYPE 3R RATED OR BETTER.

2.

KIOSK TO BE CONSTRUCTED OF MARINE GRADE (5052-H32) 11 GA (1/8") ALUMINUM

3.

KIOSK INTERIOR BACK PANELS TO BE CONSTRUCTED OF UNFINISHED 14 GA GALVANIZED STEEL

4.

KIOSK EXTERIOR TO BE GLOSS POWDER COATED RAL 9005 (BLACK).

5.

KIOSK INTERIOR TO BE POWDER COATED ASA61 GREY

6.

KIOSK DOORS MUST INCLUDE:

6.1.

GAS SHOCK STAYS

6.2.

HIDDEN HINGES

6.3.

STAINLESS STEEL 3-POINT LATCHING, PAD-LOCKABLE HANDLES

6.4.

6mm NEOPRENE RUBBER GASKET

7.

KIOSK ROOF TO BE SLOPED c/w INTEGRAL RAIN GUTTERS

8.

KIOSK TO HAVE FAN AND FILTERING ON BOTH SIDES

9.

KIOSK DISTRIBUTION PANEL(S) MUST INCLUDE:

9.1.

LOCKING DEVICES

9.2.

MACHINE WRITTEN DIRECTORY CARDS

10.

ALL EQUIPMENT TO HAVE LAMICOD NAMEPLATES

11.

KIOSK MUST INCLUDE PROVINCIAL INSPECTION STAMP.

12.

ALL KIOSK DETAILS MUST BE COMPLETE WITH ALL REQUIREMENTS NOTED IN BC HYDRO DISTRIBUTION STANDARDS INCLUDING BUT NOT LIMITED TO SECTION E334-S2.

13.

KIOSK SHOP DRAWINGS MUST BE REVIEWED AND APPROVED BY BC HYDRO DESIGN REPRESENTATIVE ASSIGNED TO THIS PROJECT PRIOR TO ORDERING.

14.

KIOSK MUST BE DESIGNED BY A PRE-APPROVED MANUFACTURER NOTED IN THE ELECTRICAL SPECIFICATIONS. FULLY DETAILED SHOP DRAWING MUST BE SUBMITTED FOR REVIEW AS PER ELECTRICAL SPECIFICATIONS.

15.

ALL ELECTRICAL COMPONENTS (DISTRIBUTION EQUIPMENT, LIGHTING, RECEPTACLES, HEATERS, etc.) LOCATED IN THE ELECTRICAL KIOSK MUST COME PRE-INSTALLED BY THE KIOSK SUPPLIER.

16.

PROVIDE ARC FLASH HAZARD LABELS ON ALL DISTRIBUTION EQUIPMENT AS PER CEC (2-306). REFER ALSO TO ELECTRICAL SPECIFICATIONS.

17.

KIOSK REINFORCED CONCRETE BASE

17.1.

KIOSK REINFORCED CONCRETE BASE TO BE CONSTRUCTED AS PER THE MASTER MUNICIPAL CONSTRUCTION DOCUMENTS, SECTION 03 30 53 - "CAST-IN-PLACE CONCRETE" or SECTION 03 40 01 - "PRECAST CONCRETE".

17.2.

CONCRETE BASE DIMENSIONS SHOWN ARE FOR REFERENCE ONLY AND ARE AN ESTIMATE OF CONCRETE BASE SIZE AND SHAPE ONLY. SUPPLIED BASE SHALL BE ENGINEERED FOR KIOSK LOAD, CONFIRM WITH SHOP DRAWINGS), LOCAL SOIL CONDITIONS, ETC.

17.3.

CONCRETE BASE MUST HAVE A MINIMUM STRENGTH OF 30 MPa AT 28 DAYS.

FLOOR PLAN ENLARGEMENT

INCOMING POWER & COMMUNICATION (WEST SIDE)

ELECTRICAL KIOSK DETAILS

SCALE: 1:25

EAST SIDE LIGHTING & IRRIGATION CONTROL

MINIMUM 50mm SPACING BETWEEN CONDUITS

STEEL OR CONCRETE LID (AS NOTED ON THE CONTRACT DRAWINGS OR AS DIRECTED BY CONTRACT ADMINISTRATOR)

BOLT/SECURE JUNCTION BOX SECTIONS

BOX TO SIT ON 150 x 300 x 50 CONCRETE BRICKS (TYPICAL AT EACH END OF BOX) EXTEND BRICKS 100mm BEYOND JUNCTION BOX ALL AROUND

CONNECT DRAIN TO TRAIL ON THE ADJACENT CONDUITS AND THEN TO FIELD DRAINAGE SYSTEM (TYPICAL)

FINE DRAIN ROCK

FACTORY BEND (TYPICAL)

HOLE FOR BONDING BOLT IN REINFORCING ON STEEL LID

NEATLY BUNDLE AND TY-RAP CONDUCTORS TO CONDUCTOR SUPPORT

DRILL HOLES IN BOX FOR 1" (Ø) R.P.V.C CONDUCTOR SUPPORT BAR (1 REQUIRED)

R.P.V.C CONDUIT (QUANTITY & SIZE VARIES)

PROVIDE A T-DRAIN FITTING FOR EVERY CONDUIT JUST BEFORE ENTERING JUNCTION BOX (TYPICAL)

100mm DRAIN PIPE FROM FIELD DRAINAGE SYSTEM, PROVIDED TO JUNCTION BOX GROUPING BY CIVIL CONTRACTOR

JUNCTION BOX

JUNCTION BOX

JUNCTION BOX

ELECTRICAL CONTRACTOR TO SUPPLY & INSTALL ALL T-DRAINS, PIPE, CONNECTORS, COUPLINGS, CAPS, ETC. TO PROVIDE TIE-IN TO FIELD DRAINAGE SYSTEM

NOTES

1

INSTALL LID ON CONCRETE JUNCTION BOXES BEFORE BACKFILLING, TAMPING AND PAVING OPERATIONS.

2

INSTALL TOP OF JUNCTION BOX FLUSH WITH FINISHED GRADE.

3

NO CONDUCTOR SPLICES IN JUNCTION BOXES.

4

REFER ALSO TO MMCD FOR ADDITIONAL JUNCTION BOX DETAILS.

5

COORDINATED ENTIRE DRAINAGE ARRANGEMENT WITH CIVIL CONTRACTOR PRIOR TO ROUGH-IN.

DETAIL - JUNCTION BOX

SCALE: N.T.S.

TOP OF TRENCH RESTORED TO ORIGINAL CONDITION OR BETTER

153mm WIDE YELLOW PLASTIC TRENCH MARKER TAPE INDICATING "WARNING ELECTRICAL"

COMPACT BACKFILL

R.P.V.C CONDUIT (QUANTITY & SIZE VARIES)

MINIMUM 600 SEPARATION

SEWER, WATER OR OTHER UTILITIES (DEPTH VARIES)

NOTES

1

RPVC CONDUIT SHALL CONFORM TO C.S.A. C22.2 No. 211.2. COUPLINGS, ADAPTORS, BENDS AND FITTINGS SHALL BE RPVC AND SHALL CONFORM TO C.S.A. C22.2 No. 85. RPVC AND SHALL CONFORM TO C.S.A. C22.2 No. 85. RPVC CONDUITS SHALL BE INSTALLED WITH C.S.A. CERTIFIED CEMENT.

2

ALL EMPTY CONDUITS SHALL BE CAPPED AND HAVE 6mmØ NYLON PULL STRING.

3

MAXIMUM 2-90° BENDS PER CONDUIT RUN.

DETAIL CONDUIT INSTALLATION

SCALE: N.T.S.

REFER TO DRAWINGS E1 FOR ADDITIONAL NOTES AND LEGEND

604 793 9445 2 - 9360 Mill Street Chilliwack BC, V2P 4N2

JARVIS  
ENGINEERING  
CONSULTANTS

500 - 12988 South Fraser Way Abbotsford, BC V2S 2A6  
T: 604.850.0447 F: 604.850.1580 www.jarviseng.com

CORP. REG. NO. 1000111

DRAWING NAME

BURKE MOUNTAIN ATHLETIC PARK  
FIELD AND SPORT TRACK  
3390 & 3400 DAVID AVENUE,  
COQUITLAM, B.C.

REVISIONS	NO.	DATE	DESCRIPTION
	1	2024.04.15	50% DETAILED DESIGN
	2	2024.05.09	75% DETAILED DESIGN
	3	2024.05.22	80% DETAILED DESIGN
	4	2024.07.09	75% COSTING DRAWINGS
	5	2024.11.05	90% DETAILED DESIGN
	6	2024.11.11	DRAFT 100% DETAILED DESIGN
	7	2024.12.16	PACKAGE
	8	2025.01.17	100% DETAILED DESIGN
	9	2025.04.30	ISSUED FOR FINAL CITY REVIEW
	10	2025.05.05	ISSUED FOR IPT

DRAWING NAME

DETAILS

JOB NO.

24026

SCALE

24026

DATE

2025.05.05

DATE

2025.05.05

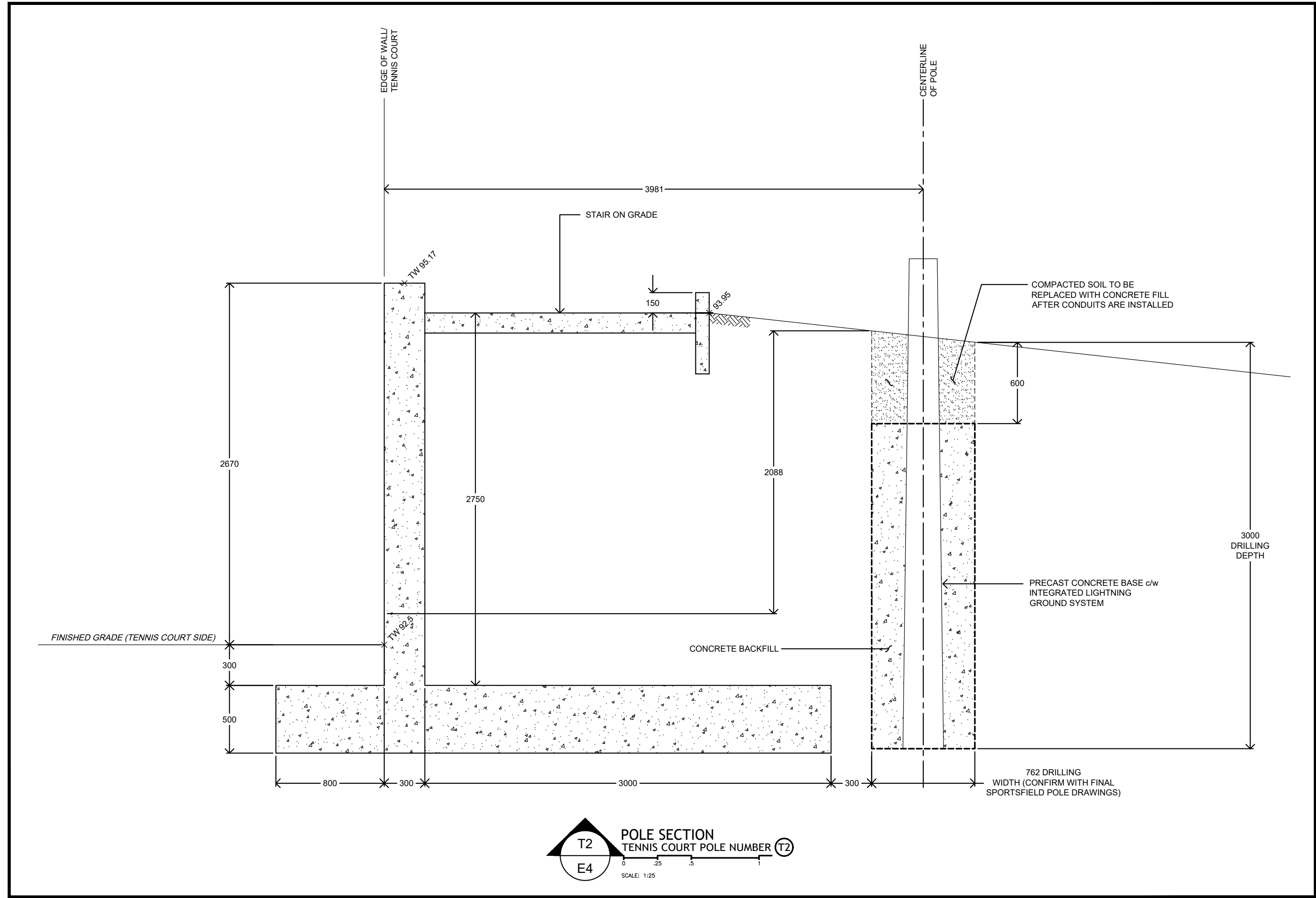
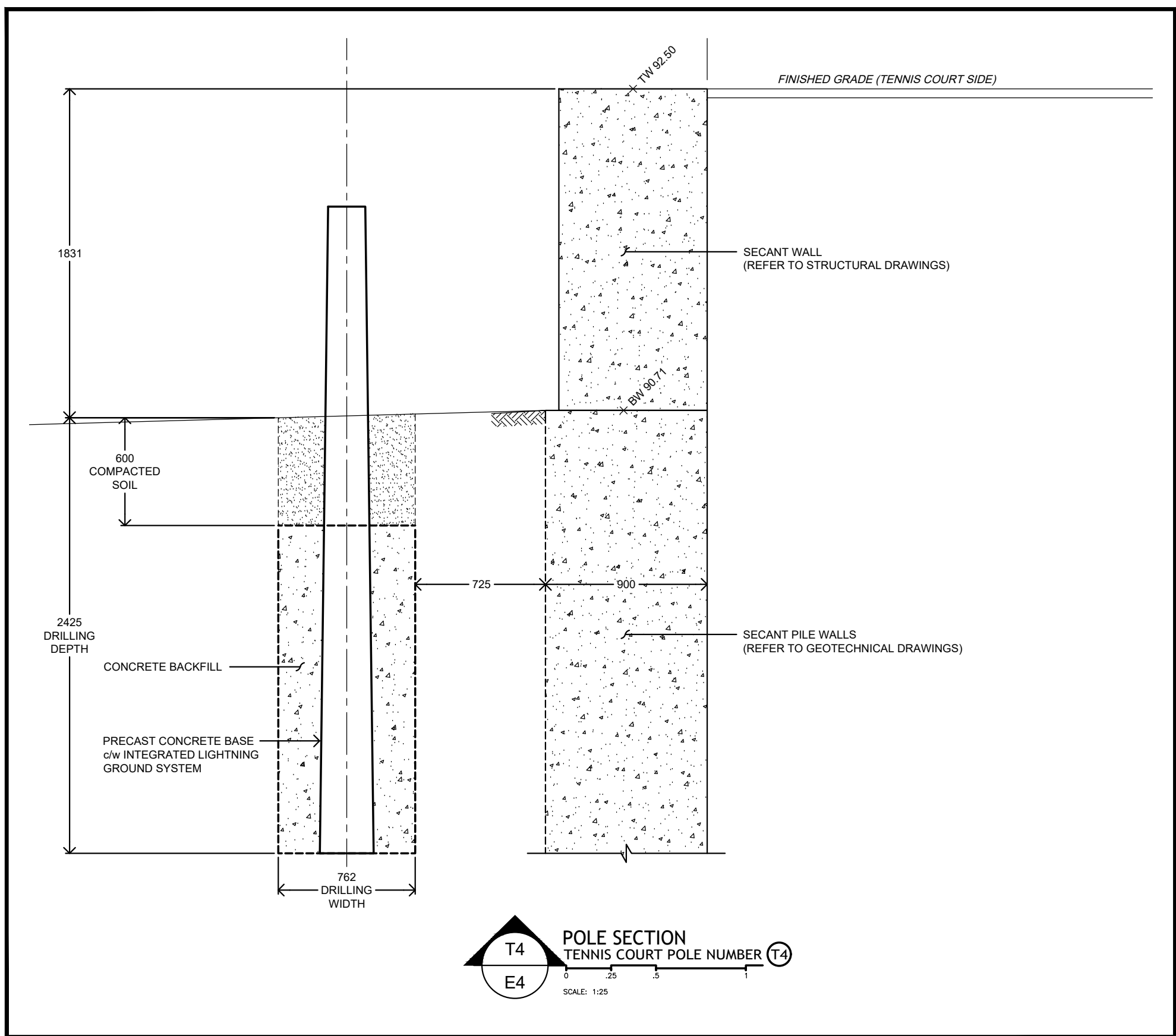
DATE

2025.05.05

E5

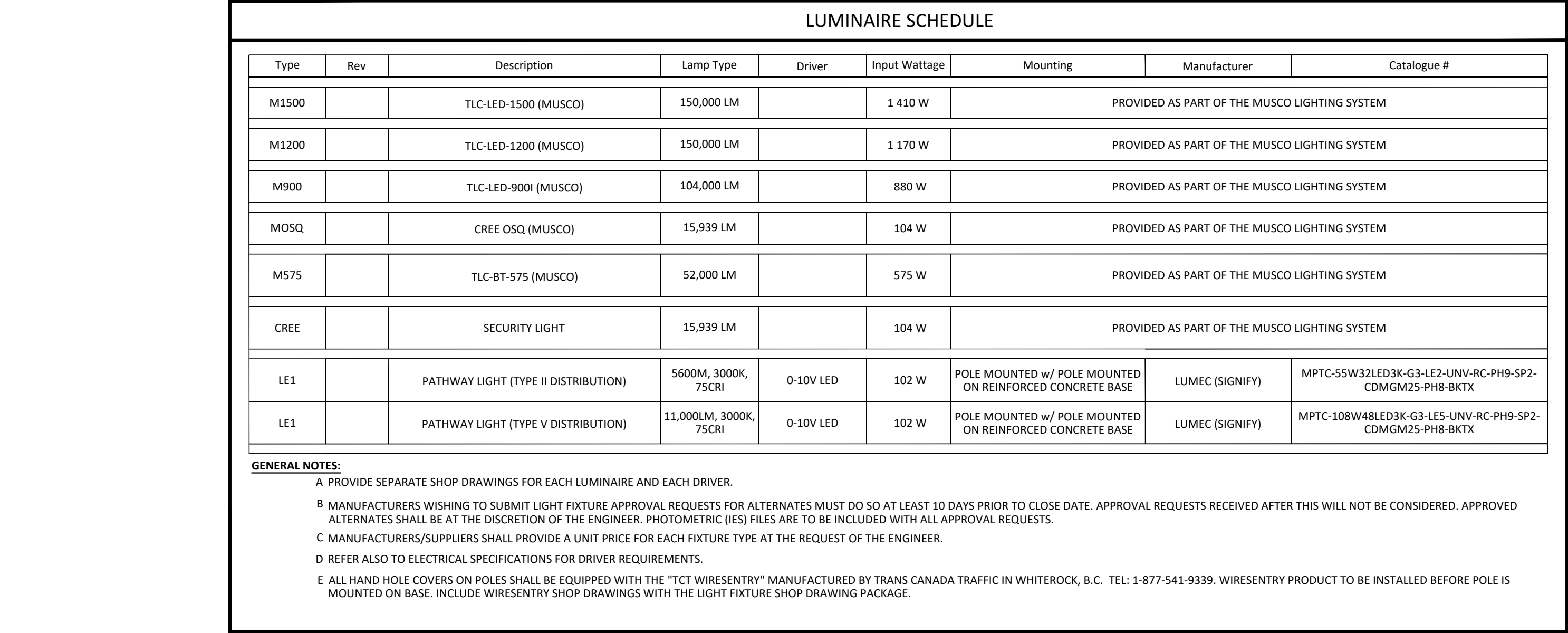
soarchitects.com







PANEL 2A													
Rev	Type	Description	Load	Breaker	Poles	Circuit		Poles	Breaker	Load	Description	Type	Rev
	o	RCPT: POLE S1	1 500 W	20	1	1	2	1	15	500 W	RCPT: KIOSK - CONVENIENCE	o	
	o	RCPT: POLE S2	1 500 W	20	1	3	4	1	15	500 W	RCPT: KIOSK - IRRIGATION CONTROL	o	
	o	RCPT: POLE S3	1 500 W	20	1	5	6	1	15	500 W	RCPT: KIOSK - IRRIGATION CONTROL	o	
	o	RCPT: POLE S4	1 500 W	20	1	7	8	1	15	500 W	RCPT: KIOSK - COMM BOARD	o	
	o	RCPT: POLE T3	1 500 W	20	1	9	10	1	15	1 000 W	FORGE FLOW HEATERS: KIOSK	o	
						11	12	1	15	100 W	LTG: KIOSK	o	
						13	14	1	15	500 W	MUSCO LIGHTING CONTROL	o	
						15	16						
						17	18						
						19	20						
						21	22						
						23	24						
						25	26						
						27	28						
						29	30						



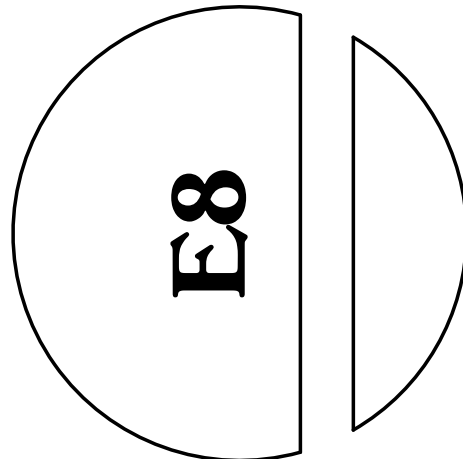
REVISIONS		DATE	DESCRIPTION
1	NO.	2024.04.15	50% DETAILED DESIGN
2		2024.05.09	75% DETAILED DESIGN
3		2024.05.22	80% DETAILED DESIGN
4		2024.07.09	75% COSTING DRAWINGS
5		2024.11.05	90% DETAILED DESIGN
6		2024.12.11	95% DETAILED DESIGN
7		2024.12.16	DRAFT 100% DETAILED DESIGN PACKAGE
8		2025.01.17	100% DETAILED DESIGN
9		2025.04.30	ISSUED FOR FINAL CITY REVIEW
10		2025.05.05	ISSUED FOR RFP

DRAWING NAME	
<h2 style="text-align: center;">DETAILS AND PANEL SCHEDULES</h2>	
JOB NO.	24026
SCALE	
DATE	2025.05.05

IT IS THE USER'S RESPONSIBILITY TO ENSURE THAT THE INFORMATION ON THIS AND ALL ATTACHED DOCUMENTS OF THE MOST RECENT ISSUE ASSUMES NO RESPONSIBILITY FOR THIRD PARTY INFORMATION INCORPORATED INTO THESE DOCUMENTS.

COPYRIGHT RESERVED. THIS DRAWING IS AND REMAINS AT ALL TIMES THE PROPERTY OF THE COMPANY. IT SHALL NOT BE REPRODUCED, FORWARDED OR ASSIGNED IN ANY FORMAT WITHOUT THE EXPRESS PERMISSION OF SOA.





DRAWING NAME  
**SPORTSFIELD LIGHTING CONSULTANT**

JOB NO.  
24026

SCALE  
DATE

DATE  
2025.05.05

THIS DOCUMENT IS THE PROPERTY OF SPORTSFIELD LIGHTING CONSULTANT. IT IS TO BE USED ONLY FOR THE PROJECT AND SITE SPECIFICALLY IDENTIFIED HEREIN. NO PART OF THIS DOCUMENT IS TO BE REPRODUCED OR TRANSMITTED IN ANY FORM OR BY ANY MEANS, ELECTRONIC OR MECHANICAL, INCLUDING PHOTOCOPYING, RECORDING, OR BY ANY INFORMATION STORAGE AND RETRIEVAL SYSTEM, WITHOUT THE EXPRESS WRITTEN PERMISSION OF SPORTSFIELD LIGHTING CONSULTANT.

ALL THREE EXISTING PROPERTIES OF THE ARCHITECT AND ENGINEER ARE RESERVED. THIS DRAWING IS AND REMAINS AT ALL TIMES THE PROPERTY OF SPORTSFIELD LIGHTING CONSULTANT. IT IS TO BE USED ONLY FOR THE PROJECT AND SITE SPECIFICALLY IDENTIFIED HEREIN. NO PART OF THIS DOCUMENT IS TO BE REPRODUCED OR TRANSMITTED IN ANY FORM OR BY ANY MEANS, ELECTRONIC OR MECHANICAL, INCLUDING PHOTOCOPYING, RECORDING, OR BY ANY INFORMATION STORAGE AND RETRIEVAL SYSTEM, WITHOUT THE EXPRESS WRITTEN PERMISSION OF SPORTSFIELD LIGHTING CONSULTANT.

REVISIONS	NO.	DATE	DESCRIPTION
	1	2024.04.15	50% DETAILED DESIGN
	2	2024.05.09	75% DETAILED DESIGN
	3	2024.05.22	80% DETAILED DESIGN
	4	2024.07.09	75% COSTING DRAWINGS
	5	2024.11.05	90% DETAILED DESIGN
	6	2024.11.05	90% DETAILED DESIGN
	7	2024.12.16	DRAFT 100% DETAILED DESIGN PACKAGE
	8	2025.01.17	100% DETAILED DESIGN
	9	2025.04.30	ISSUED FOR FINAL CITY REVIEW
	10	2025.05.05	ISSUED FOR TPT

DRAWING NAME

**BURKE MOUNTAIN ATHLETIC PARK  
FIELD AND SPORT TRACK**  
3390 & 3400 DAVID AVENUE,  
COQUITLAM, B.C.

604 793 9445

2 - 9360 Mill Street Chilliwack BC, V2P 4N2



soarchitects.com

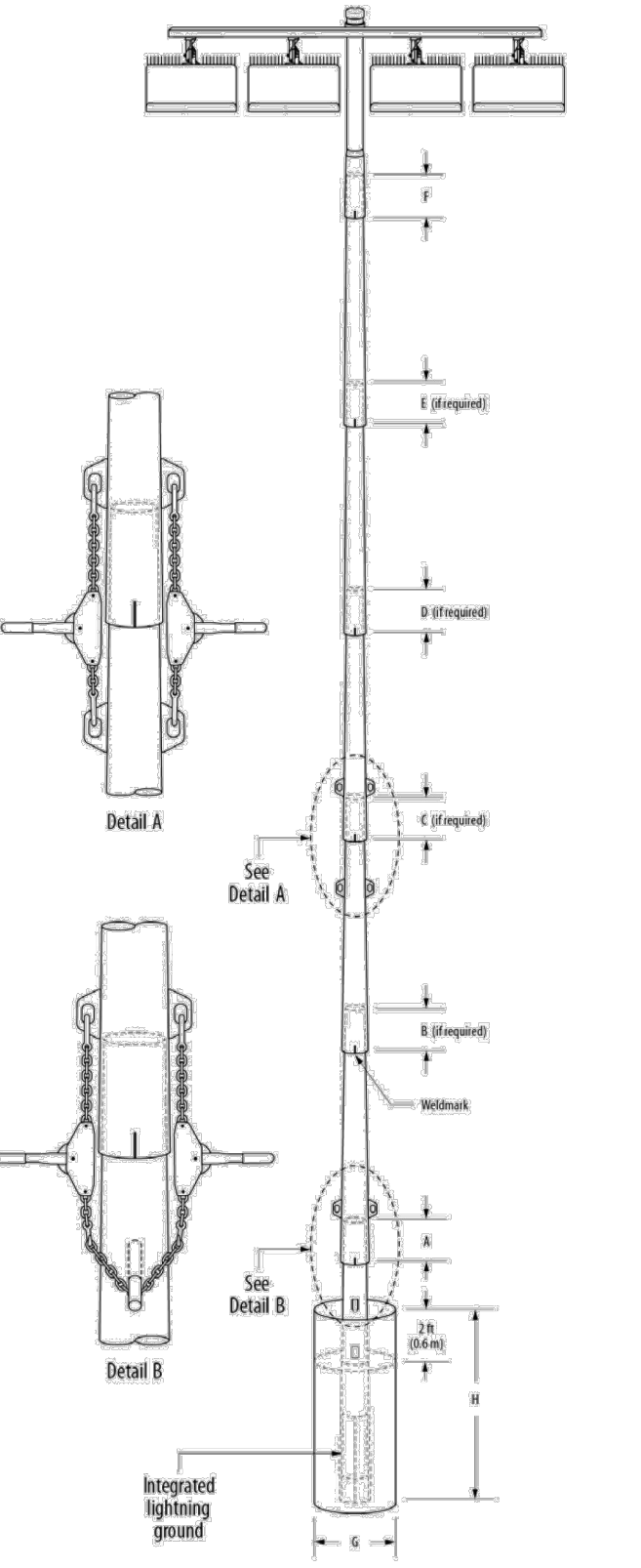


TABLE 1: POLE ASSEMBLY			
POLE ID	POLE HEIGHT ft (m)	# OF LUMINAIRES	ASSEMBLED POLE WEIGHT <sup>1</sup> lb (kg)
S1	80 (24.4)	9	3280 (1488)
S2	80 (24.4)	9	3280 (1488)
T1	50 (15.2)	2	626 (284)
T2	50 (15.2)	3	801 (363)
T3	50 (15.2)	3	801 (363)
T4	50 (15.2)	2	626 (284)

- Pole Assembly Notes:
- Steel pole should overlap concrete base and be seated tight with 1 1/2 ton come-alongs (contractor provided).
  - Align weldmarks on steel sections before assembling.
  - Assembled pole weight includes steel sections, crossarms, luminaires, and electrical components enclosures. If pole has stamped structural design then use pole weight (listed as vertical force) on stamped structural design document.
  - Section overlap must be pulled together until tight. Overlap measurement should be +/- 6 in (152 mm).
  - This document is not intended for use as an assembly instruction. See installation instructions: Light-Structure System™ Lighting System for complete assembly procedure.

TABLE 2: FOUNDATION DETAILS					
POLE ID	CONCRETE BASE WEIGHT lb (kg)	BURIAL INFORMATION <sup>1,2</sup>		CUT BASE TYPE	LIGHTNING GROUND <sup>3</sup> SUPPLEMENTAL INSTRUCTION
		G ft (m)	H ft (m)		
S1	5300 (2404)	30 (762)	16 (4.9)	1.6 (1.2)	NO INTEGRATED <sup>4</sup> N/A
S2	5300 (2404)	30 (762)	16 (4.9)	1.6 (1.2)	NO INTEGRATED <sup>4</sup> N/A
T1	1110 (503)	30 (762)	8 (2.4)	1.0 (0.7)	NO INTEGRATED <sup>4</sup> N/A
T2	1890 (844)	30 (762)	10 (3.0)	1.2 (0.9)	NO INTEGRATED <sup>4</sup> N/A
T3	1890 (844)	30 (762)	10 (3.0)	1.2 (0.9)	NO INTEGRATED <sup>4</sup> N/A
T4	1110 (503)	30 (762)	8 (2.4)	1.0 (0.7)	NO INTEGRATED <sup>4</sup> N/A

- Foundation Notes:
- Concrete backfill is calculated to 2 ft (0.6m) below grade (no average included). Top 2 ft (0.6m) to be class 5 soil compacted to 95% density of surrounding undisturbed soil unless otherwise specified in stamped structural design.
  - Concrete backfill required 3000 lb/cu ft (20 MPa) minimum.
  - Foundation design per 2015 NBC, 0.50 kPa mph, exposure category None, variation STD.
  - Assumes IBC class 5 soils.
  - Standard bases include integrated lightning protection. If bases are out, supplemental lightning protection is required.
  - Contact Musco for materials and instruction.
  - Lightning protection is a manufacturer installed concrete encased electrode and connector. Ground connection is made when concrete base is installed and footing is poured. No additional steps required.

Date: 11/20/2024  
Representative: Mark Parker  
Project: 228879  
Scale: Not to Scale  
Page: 1 of 2  
PRELIMINARY

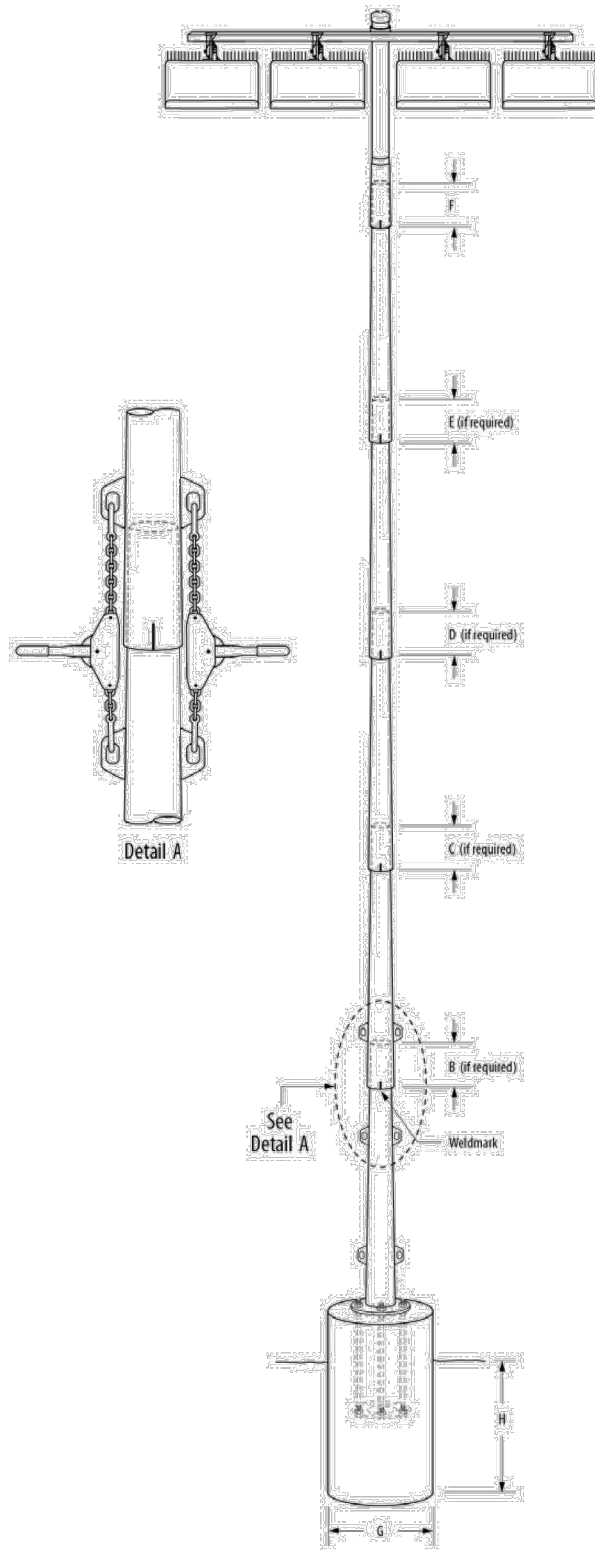


TABLE 1: POLE ASSEMBLY			
POLE ID	POLE HEIGHT ft (m)	# OF LUMINAIRES	ASSEMBLED POLE WEIGHT <sup>1</sup> lb (kg)
S3	80 (24.4)	9	3673 (1666)
S4	80 (24.4)	9	3673 (1666)

- Pole Assembly Notes:
- Align weldmarks on steel sections before assembling.
  - Section overlap must be pulled together until tight. Overlap measurement should be +/- 6 in (152 mm).
  - Assembled pole weight includes steel sections, crossarms, luminaires, and electrical components enclosures. See stamped structural design for pole weight (listed as vertical force).
  - This document is not intended for use as an assembly instruction. See installation instructions: Light-Structure System™ Lighting System and Baseplate Supplemental for complete assembly procedure.

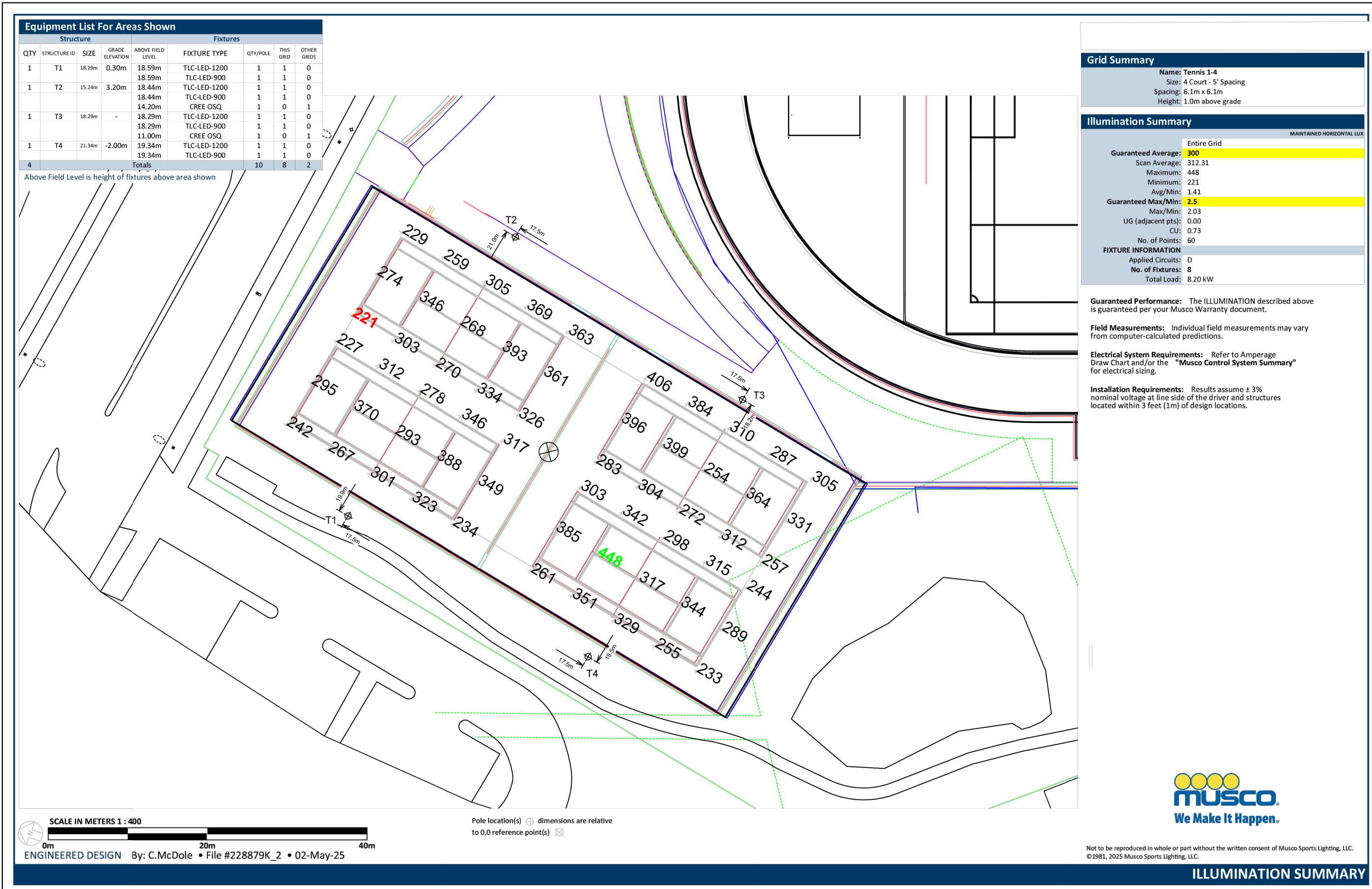
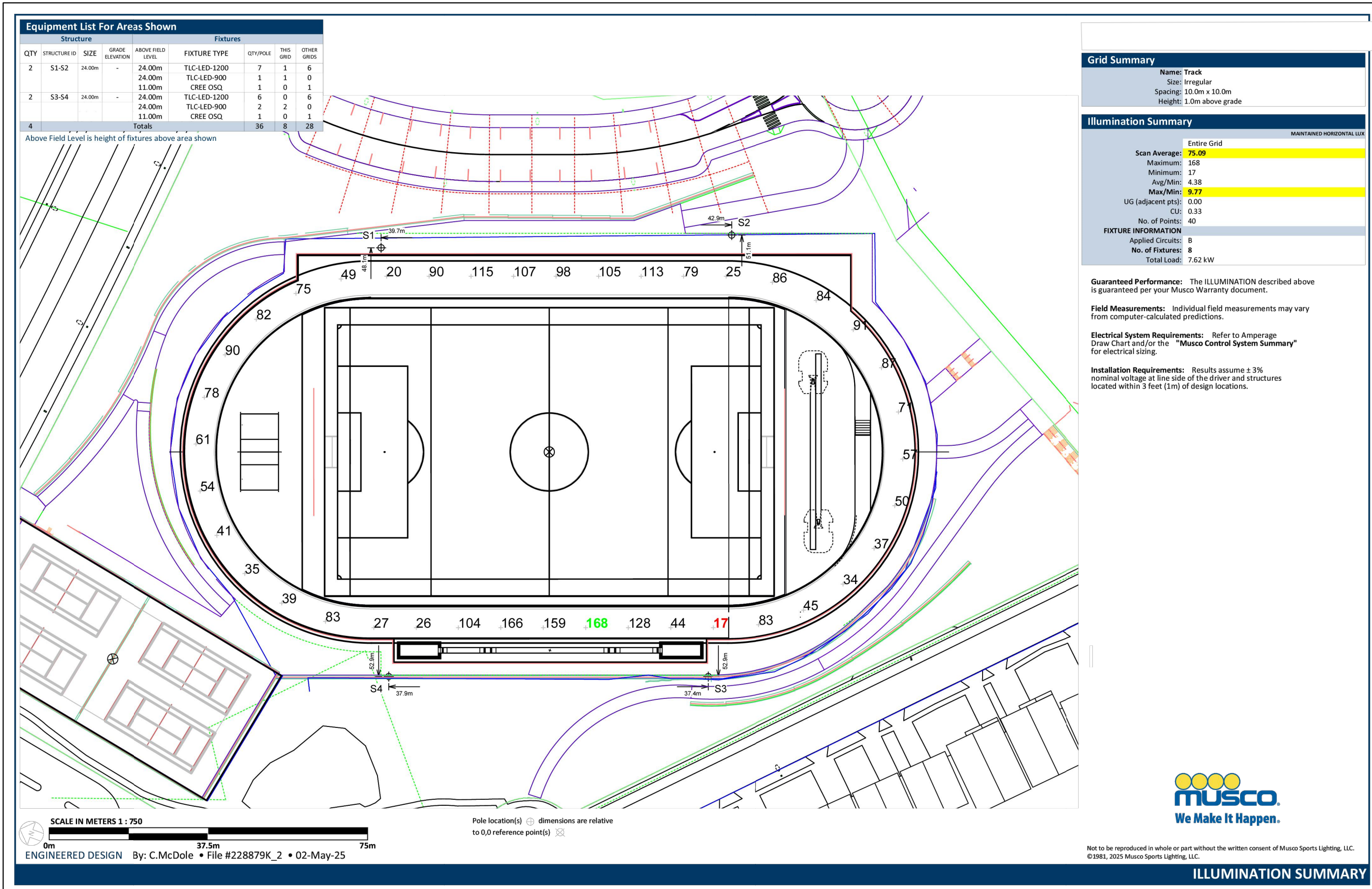
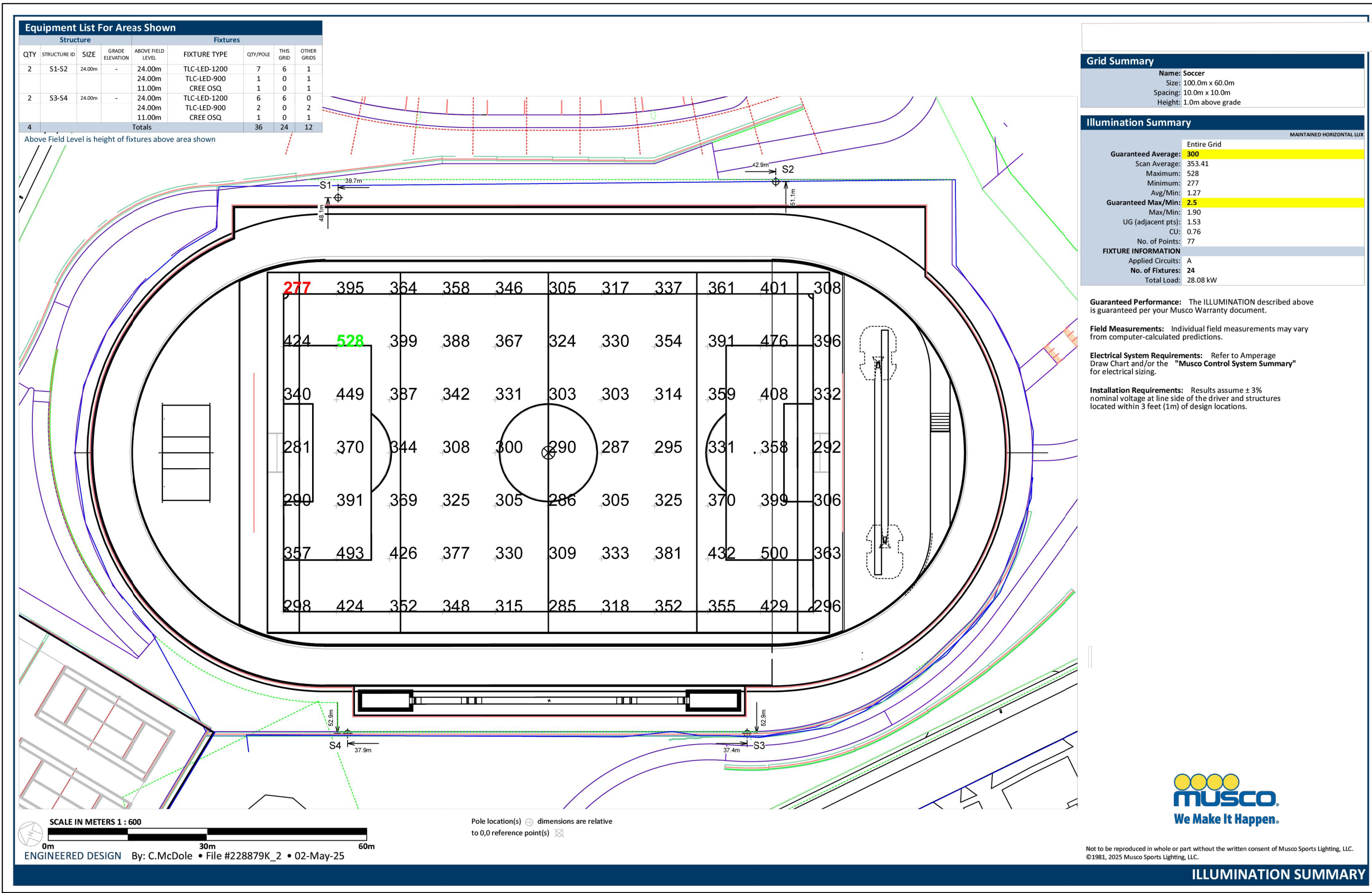
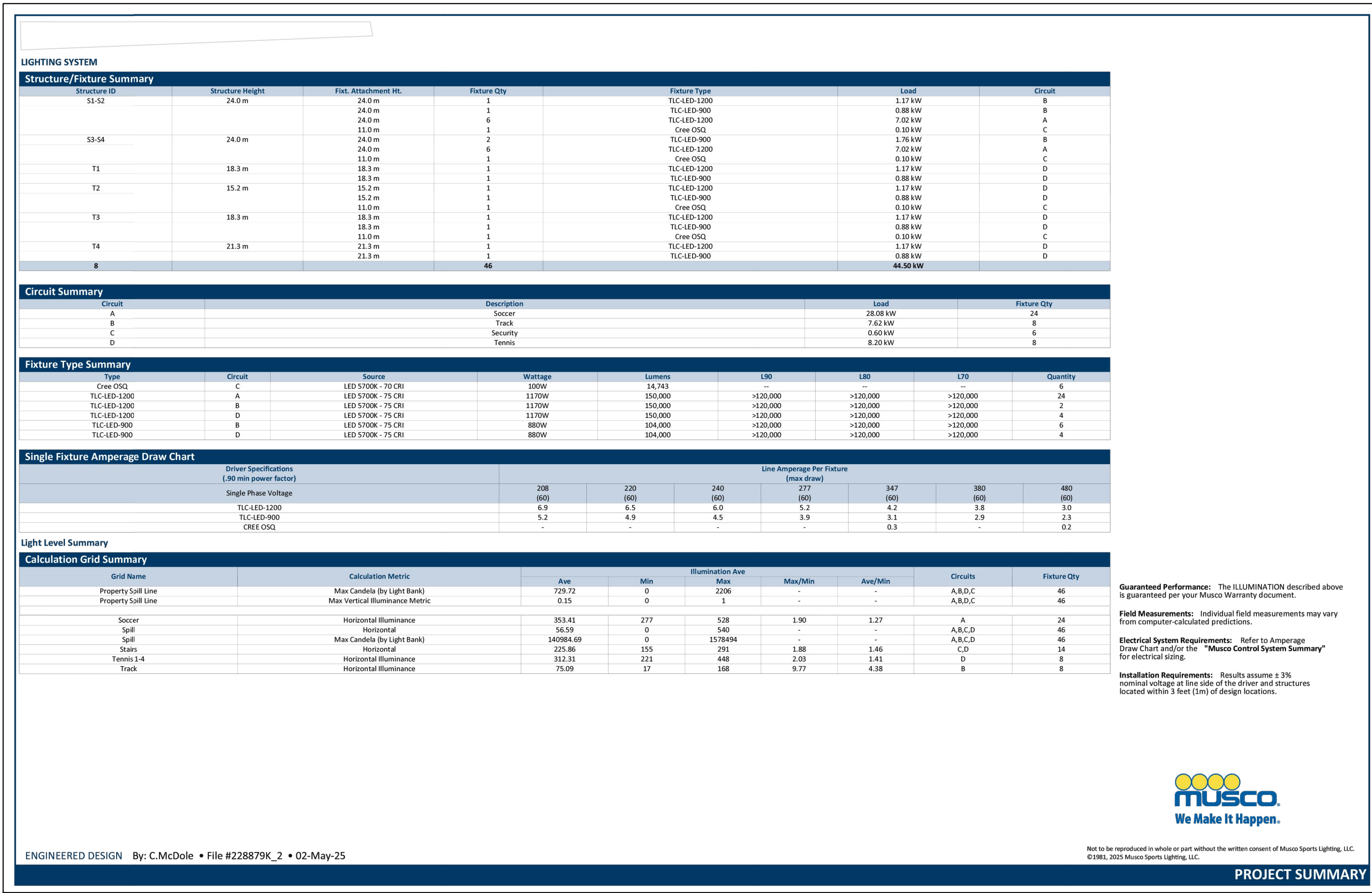
TABLE 2: FOUNDATION DETAILS					
POLE ID	CONCRETE BASE WEIGHT lb (kg)	BURIAL INFORMATION <sup>1,2</sup>		CUT BASE TYPE	LIGHTNING GROUND <sup>3</sup> SUPPLEMENTAL INSTRUCTION
		G ft (m)	H ft (m)		
S3	N/A	PER STAMPED STRUCTURAL DESIGN	N/A	DRIVEN ELECTRODE	N/A
S4	N/A	PER STAMPED STRUCTURAL DESIGN	N/A	DRIVEN ELECTRODE	N/A

- Foundation Notes:
- Foundation design per 2015 NBC, 0.50 kPa mph, exposure category None, variation STD.
  - See stamped structural design for all foundation design requirements.
  - Manufacturer supplied ground rod is installed by contractor after entire pole assembly is complete.

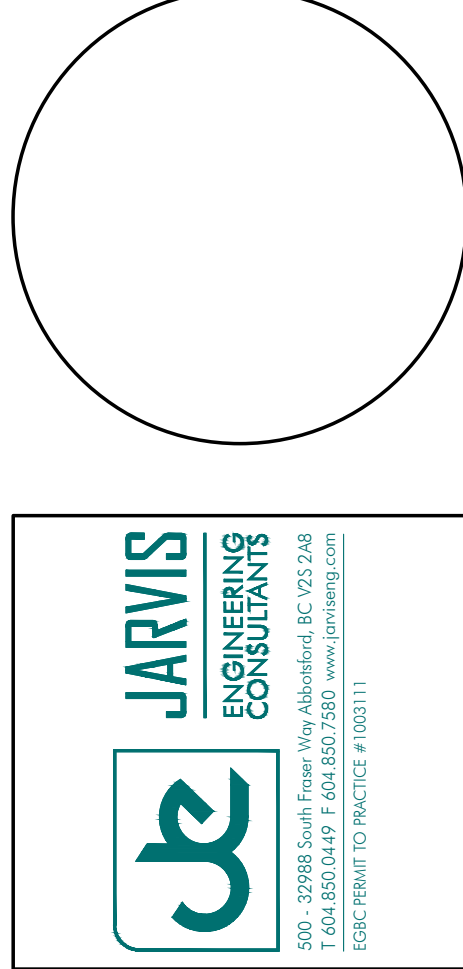
Date: 11/20/2024  
Representative: Mark Parker  
Project: 228879  
Scale: Not to Scale  
Page: 2 of 2  
PRELIMINARY







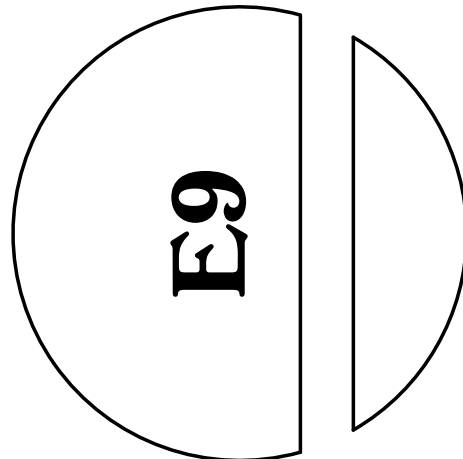
604 793 9445 2 - 9360 Mill Street Chilliwack BC, V2P 4N2



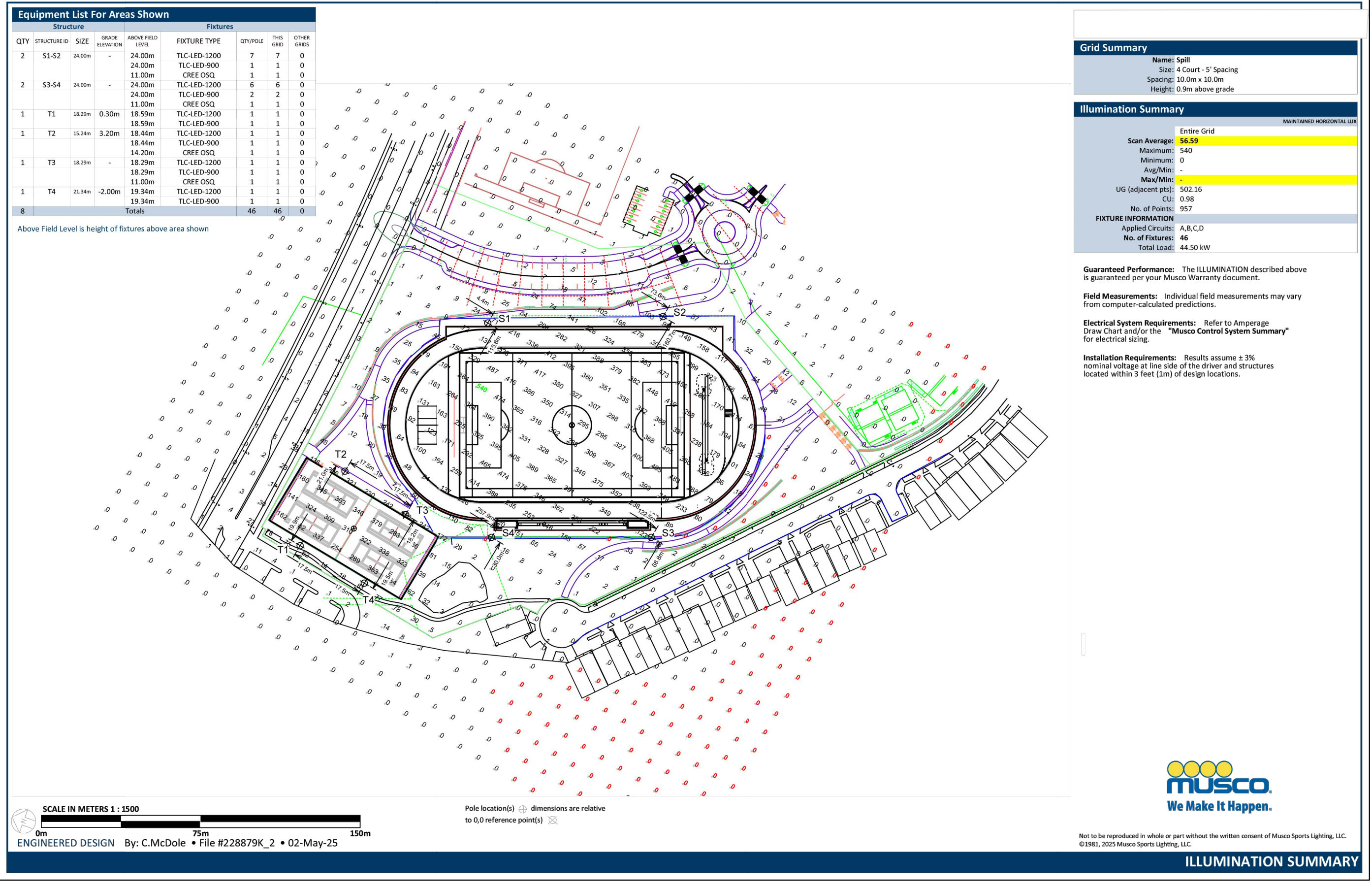
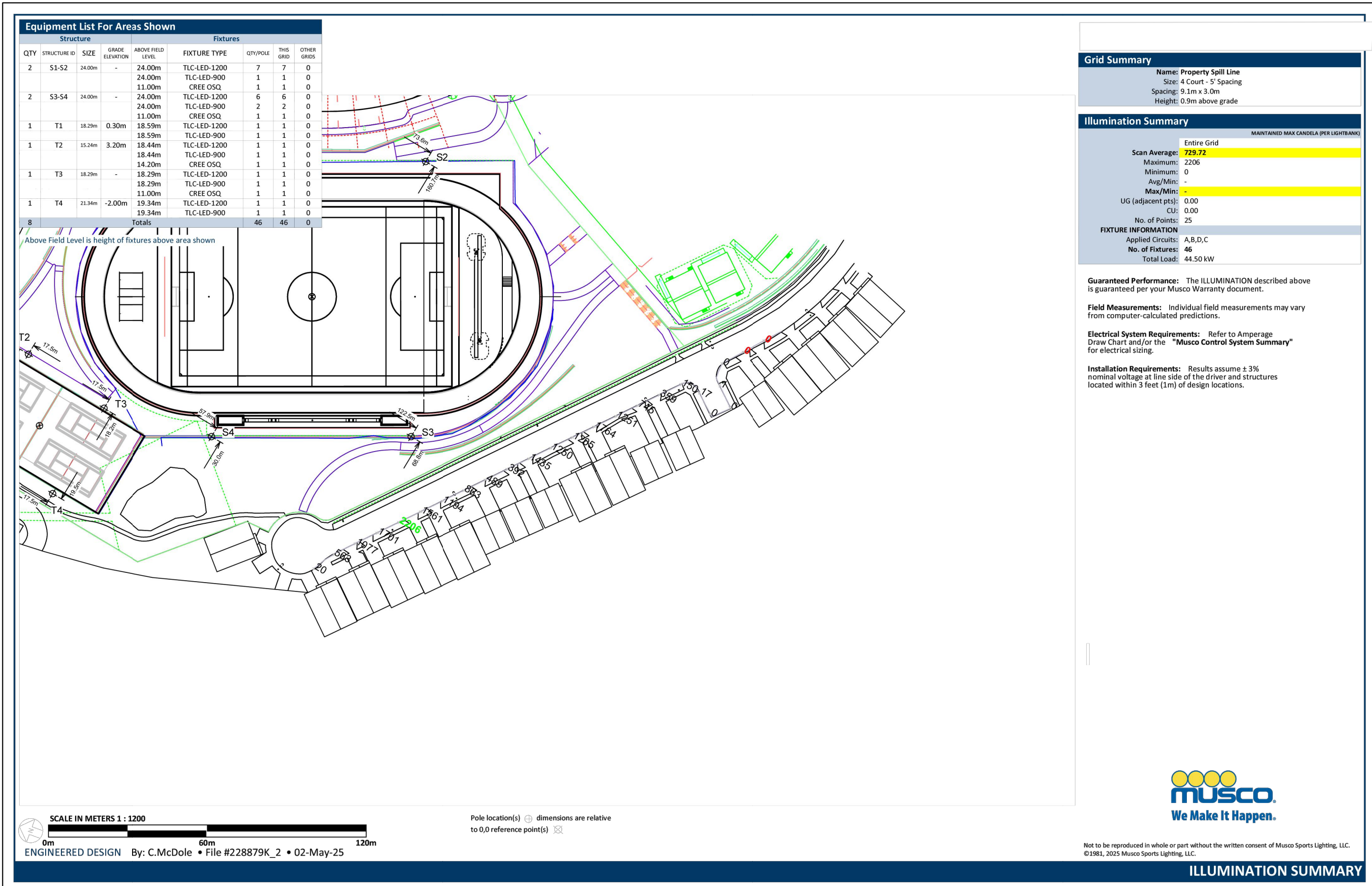
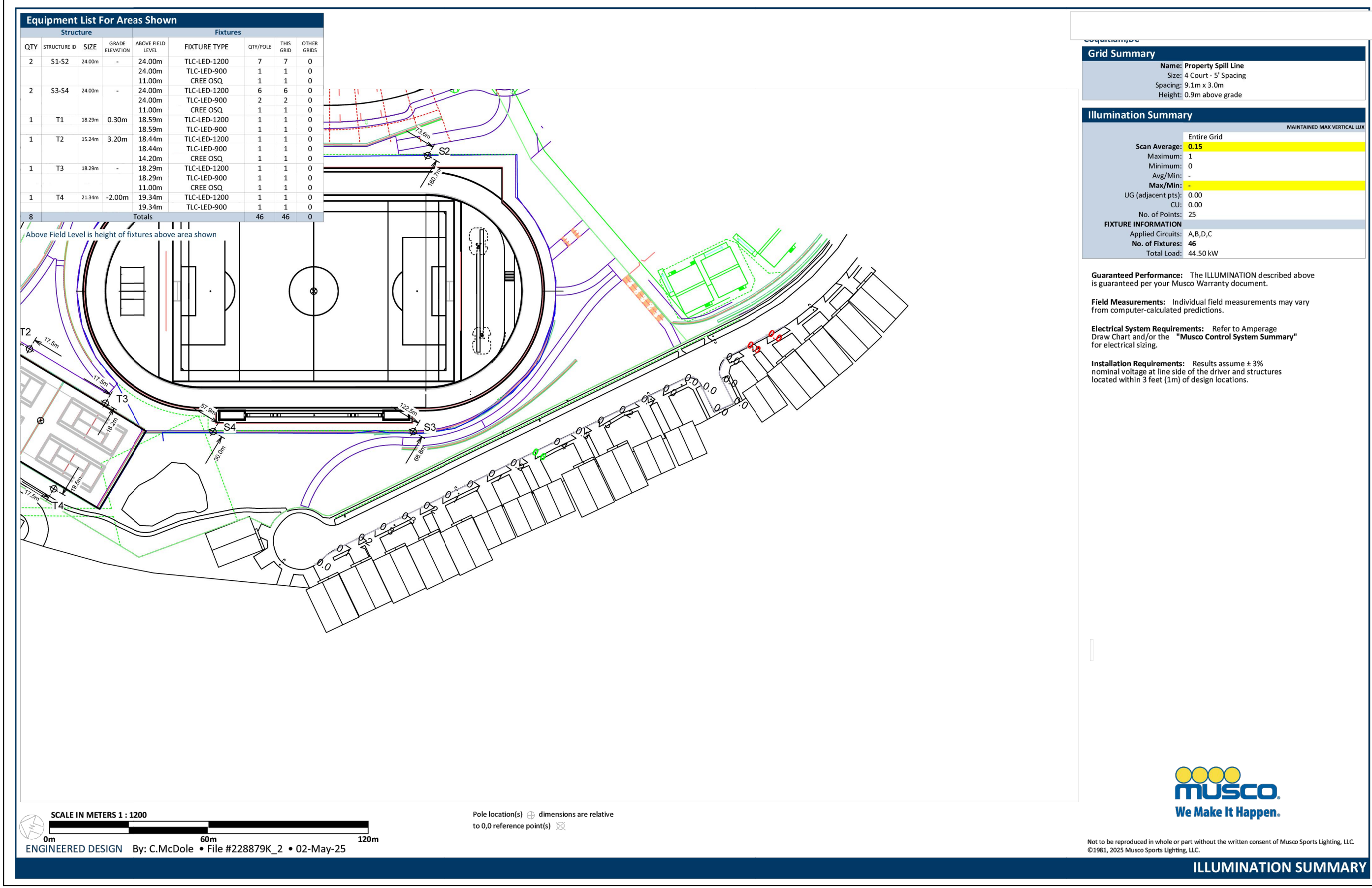
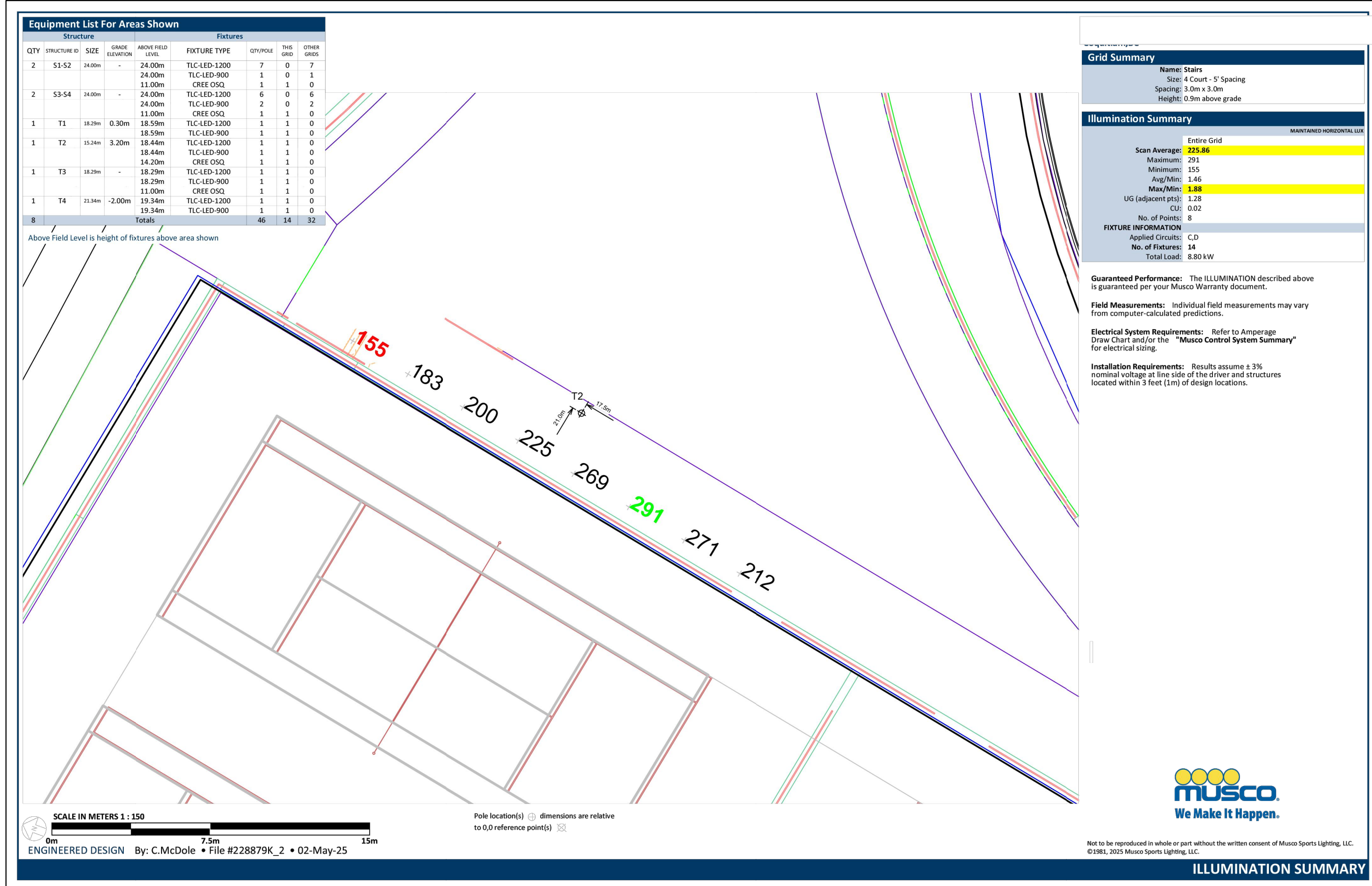
**BURKE MOUNTAIN ATHLETIC PARK**  
**FIELD AND SPORT TRACK**  
3390 & 3400 DAVID AVENUE,  
COQUITLAM, B.C.

REVISIONS		NO.	DATE	DESCRIPTION
1	2024.04.15	80% DETAILED DESIGN		
2	2024.05.09	75% DETAILED DESIGN		
3	2024.05.22	80% DETAILED DESIGN		
4	2024.07.09	75% COSTING DRAWINGS		
5	2024.11.05	90% DETAILED DESIGN		
6	2024.12.16	DRAFT 100% DETAILED DESIGN PACKAGE		
7	2025.01.17	100% DETAILED DESIGN		
8	2025.04.30	ISSUED FOR FINAL CITY REVIEW		
9	2025.05.05	ISSUED FOR RFP		

DRAWING NAME		SPORTSFIELD LIGHTING CONSULTANT ILLUMINATION SUMMARY
JOB NO.	24026	
SCALE		
DATE	2025.05.05	







DRAWING NAME: SPORTSFIELD LIGHTING CONSULTANT ILLUMINATION SUMMARY

JOB NO. 2-4026

SCALE 1"=100'

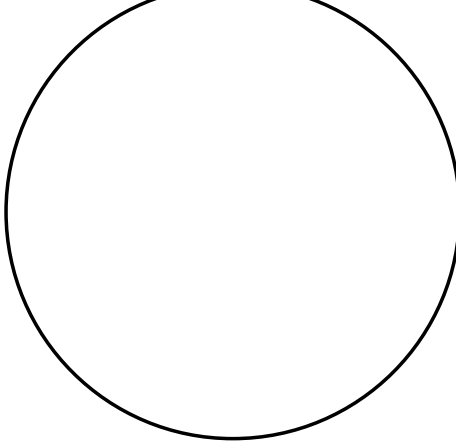
DATE 2025.05.05

REVISIONS

NO.	DATE	DESCRIPTION
1	2024.04.15	50% DETAILED DESIGN
2	2024.05.09	75% DETAILED DESIGN
3	2024.05.22	80% DETAILED DESIGN
4	2024.07.09	80% DETAILED DESIGN
5	2024.11.05	90% DETAILED DESIGN
6	2024.12.16	DRAFT 100% DETAILED DESIGN PACKAGE
7	2025.01.17	100% DETAILED DESIGN
8	2025.04.30	ISSUED FOR FINAL CITY REVIEW
9	2025.05.05	ISSUED FOR RPT

BURKE MOUNTAIN ATHLETIC PARK  
FIELD AND SPORT TRACK

3390 & 3400 DAVID AVENUE,  
COQUITLAM, B.C.



604 793 9445 2 - 9360 Mill Street Chilliwack BC, V2P 4N2