



**Addendum No. 1**  
**City of Coquitlam**  
**Tender No. 78035A**  
**Mariner Overpass Structural Rehab & Intersection Upgrade**  
(Consists of 5 Pages)

Issue Date: December 5, 2025

Tenderers shall note the following amendments to the **CONTRACT DOCUMENT** as follows:

**Revisions:**

**1. REFER to: Appendix B – As-Builts**

**ADD: Coquitlam Record Drawing No. E0958TS, Signal and Lighting Installation Johnson-Mariner Connector Dewdney Trunk Road to Barnet Highway Coquitlam (pg ADD 1-5)**

**Questions & Clarifications**

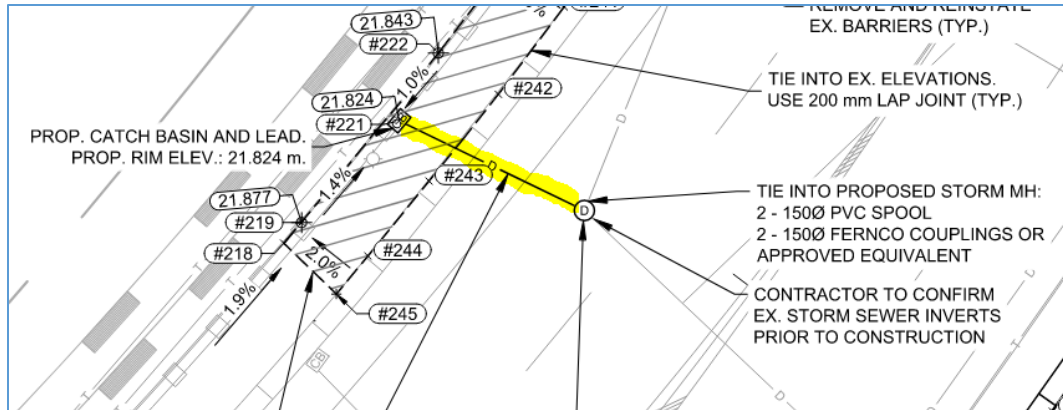
Q1) Please confirm which tender line item covers the concrete foundations for the new lighting poles, as the drawings show pole locations but the concrete scope is not clearly identified in the Schedule of Quantities and Prices.

A1) **Refer to Schedule of Quantities and Prices - Payment for the concrete streetlight bases are listed as Pay Item 13.01 "Supply & Installation of Structural Concrete and Rebar (including removal of existing median and seal of concrete surface as shown on the Contract Drawings)".**

Q2) Two storm pipes are shown tying into the new manhole. Please confirm whether they are existing lines shown for reference only, or they are intended to be new installations under this contract. The drawings appear ambiguous.

A2) **Refer to Contract Drawings by Associated Engineering – BR230 Mariner Way Overpass Structural Rehabilitation.**

**Sheet 2 shows a proposed Catch Basin and Lead tying into the new drainage manhole. The proposed CB lead line is highlighted in yellow below; the existing storm pipe is shown in lighter line weight.**



Q3) Please provide the accurate horizontal coordinates (northing/easting) and invert elevations for the new manhole to ensure correct layout and installation.

**A3) Refer to Contract Drawings by Associated Engineering and Supplementary Contract Specifications Section 33 44 01S – Manholes and Catchbasins (Page SS 57), Clause 1.5.1.1. The Contractor is responsible for prelocating existing storm sewer inverters and then coordinating with the Contract Administrator and the Engineer to determine the invert elevations of the new manhole. Payment for prelocates and coordination work is included in the manhole installation price.**

**Refer to Appendix B – As-builts for Drainage As-Built that contain coordinates and elevations of the existing system for reference.**

Q4) Several RPVC cable conduits were observed beneath the north abutment repair area, on both sides of the bridge. Please confirm:

- Are these cables active or abandoned?
- If active, does the contract include relocation, protection, or reinstatement?
- If relocation is required, please provide specifications or details.

**A4) Refer to added As-built Drawing No. E0958TS, pg ADD 1-5, to reference existing signal and lighting infrastructure. The Contractor is responsible to protect the Work, the Owner's property, and other person's property from Damage. The cables are to be protected during the Work.**

**Payment to protect all aforementioned property is considered incidental to the Contract.**

Q5) To complete the South abutment repairs, access is required behind the existing Sound Wall, where there is a significant elevation difference. Please clarify:

- Is any safe access method, platform, staging, or temporary structure specified in the contract documents?
- If not, should the contractor assume temporary access design and installation in its pricing?
- Are there any property, utility, or structural limitations affecting work behind the Sound Wall?

**A5) The Contractor can access the public right-of-way off the side of the bridge via a pedestrian access gate located on Mariner Way near the Dewdney Trunk Rd intersection. The Contractor will be provided with a key to the gate.**

**Refer to Supplementary Contract Specifications Section 00 72 43S – Contract Specific Notations (Page SS 5), Clause 3.5. The Contractor is responsible for determining and implementing safe and efficient methods of construction including (but not limited to) access, staging, temporary installations, property protection, and reinstatement. Payment for this work is considered incidental to the contract.**

Q6) Can the concrete pours for the joints be done in segments or do we need to do one full concrete pour for the joint once it is replaced?

**A6) Concrete pours can be done in segments. Refer to Supplementary Contract Specifications Section 03 30 53S – Cast-In-Place Concrete (Page SS 29), Clause 3.6 for Concrete placing and handling instructions.**

Q7) Are there dimensions of the keeper plates that you can share?

**A7) Approximate existing dimensions are shown in the sketch below. These approximate dimensions are provided for reference only. Payment applies to supply and install of the keeper plates with field-verified dimensions by the Contractor.**



**Approximately 55mm-thick of plywood padding is installed between keeper plates and the bearing. Payment for any required plywood padding is to be included in Pay Item 6.01 for the supply and installation of bearing keeper plates. After issuance of the Notice to Proceed, the Contractor is responsible for verifying dimensions onsite and**

**must provide shop drawings of the keeper plates for the Contract Administrator and Engineer's review two weeks prior to fabrication.**

Q8) We would like to politely request a 5-7 day extension on the Mariner Overpass Structural Rehab and intersection Upgrades closing date.

**A8) At this point, the City will not be extending the Closing date and Time. Closing date remains the same, Wednesday December 10, 2025 at 2:00PM local time. Please monitor the City's website for further addenda.**

---

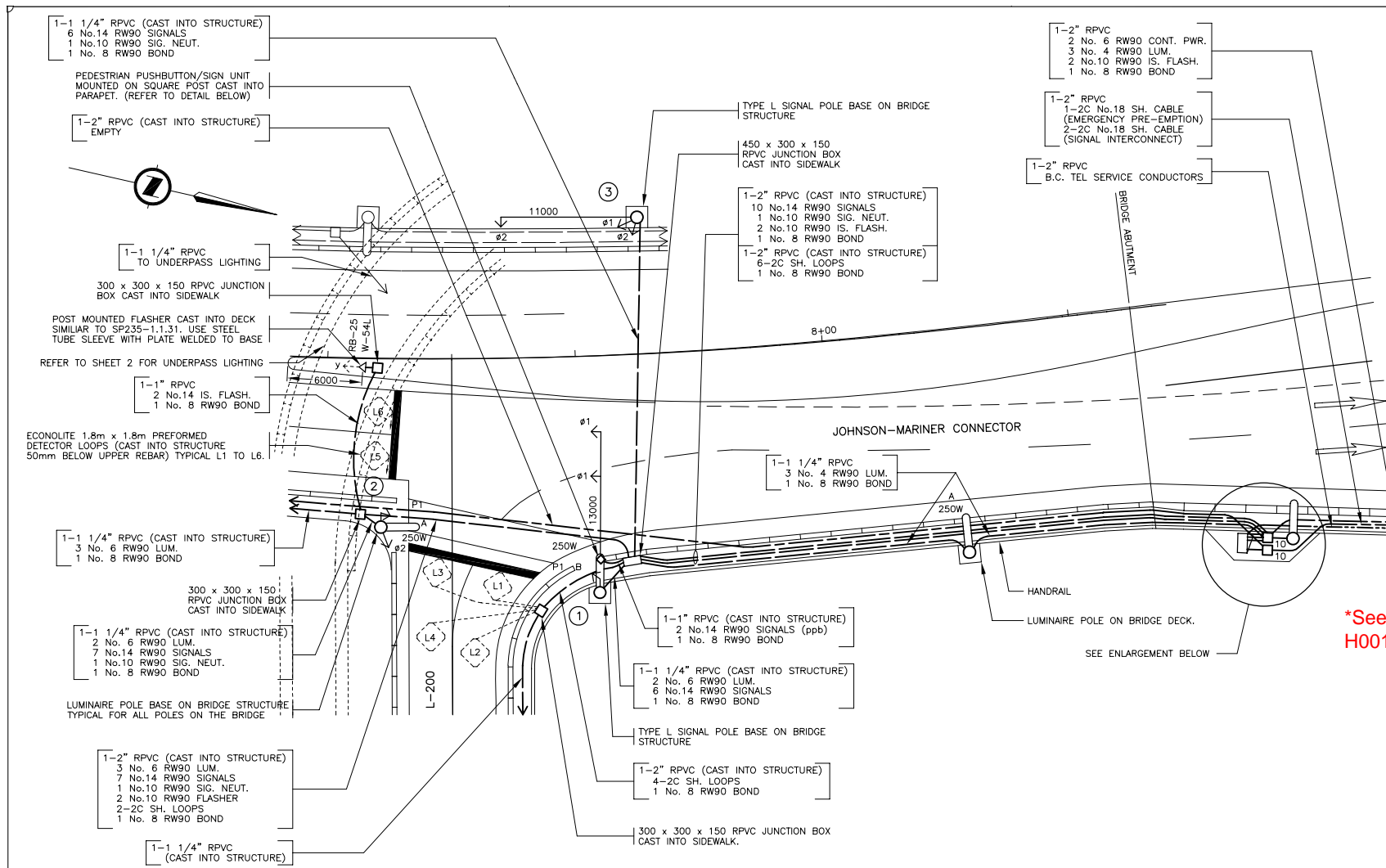
***End of Addendum No. 1***

Tenderers shall take into account the content of this Addendum in the preparation and submission of the Tender which will form part of the contract and should be acknowledged on the Tender form where indicated.

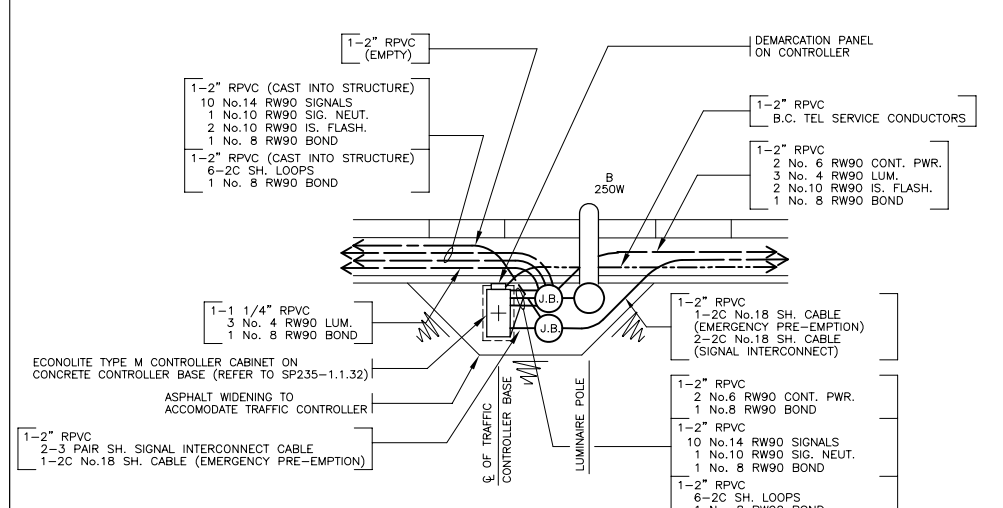
Upon submitting a Tender, Tenderers will be deemed to have received all addenda and considered the information for inclusion in the Tender submitted.

*Issued by:*

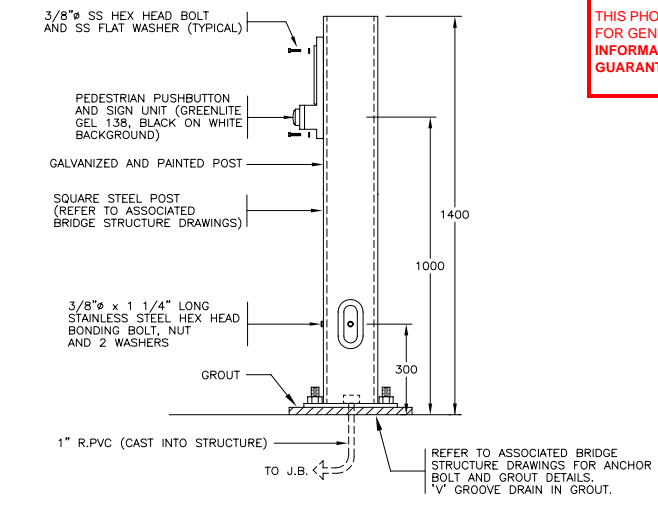
M. Pain  
Manager Procurement  
Email: [bid@coquitlam.ca](mailto:bid@coquitlam.ca)



**SITE PLAN**  
1:250

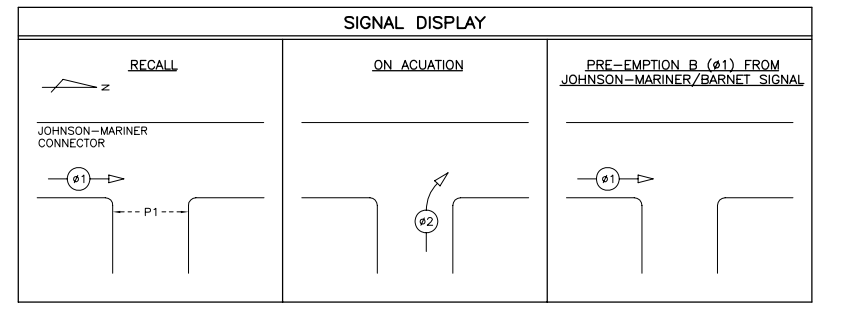


**ENLARGEMENT**  
N.T.S.



**PEDESTRIAN PUSHBUTTON ON POST**  
AT L-200 RAMP TRAFFIC SIGNAL  
N.T.S.

COLOUR CODE		
ITEM	SIGNAL SECTION	CONDUCTOR COLOUR
#1	RED	RED
	YELLOW	BROWN
P1	DON'T WALK	BROW
	WALK	BLUE
#2	RED	RED
	YELLOW	YELLOW
	GREEN	BLUE (WHITE T.T.)
CONTROLLER POWER		BLACK
LUMINAIRE CCTS.		RED
		BLACK
ISLAND FLASHER		ORANGE
NEUTRAL		WHITE
GROUND/BOND		GREEN
ADVANCE WARNING FLASHER		YELLOW
		BROWN



\*See also H0004-02, H0013-01, H0015-04 for Highways

**IMPORTANT:**  
HYDRO, GAS AND TELEPHONE ARE NOT SHOWN ON THE CITY OF COQUITLAM AS-BUILTS OR RECORD DRAWINGS. CONTACT BC HYDRO, TERASEN GAS AND TELUS FOR CURRENT AS-BUILTS PERTAINING TO THESE UTILITIES.

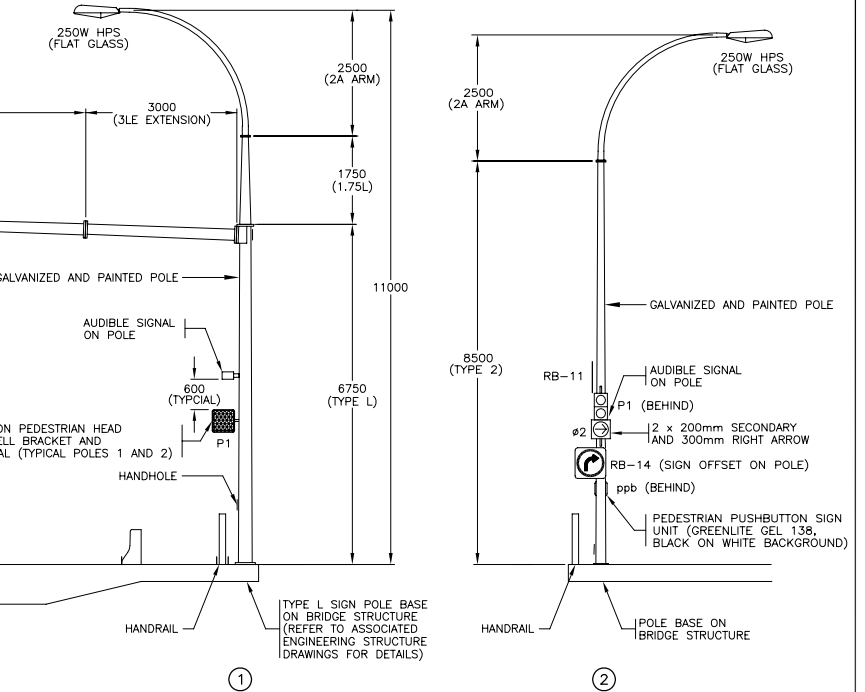
**NOTE:**  
LOCATION OF EXISTING UTILITIES SHOWN ARE APPROXIMATE ONLY AND SHOULD BE CONFIRMED BY A PIPE LOCATOR AND MANUAL DIGGING. ALL OR ANY EXISTING STRUCTURES ARE NOT NECESSARILY SHOWN.

THIS PHOTOCOPY IS SUPPLIED BY THE CITY OF COQUITLAM FOR GENERAL INFORMATION ONLY AND THE ACCURACY OF INFORMATION CONTAINED ON THE DOCUMENT IS NOT GUARANTEED BY THE CITY.

**COQUITLAM RECORD DRAWING NO.**  
● E0958TS  
C0085

I HEREBY CERTIFY THAT TO THE BEST OF MY KNOWLEDGE THESE WORKS ARE COMPLETE AND CONSTRUCTED IN ACCORDANCE WITH THIS "RECORD DRAWING"

**SHAFLIK ENGINEERING LTD.**  
PER: \_\_\_\_\_  
DATE: \_\_\_\_\_



**ELEVATIONS**  
1:75

REFER TO SHEET 1 FOR NOTES

**CITY OF COQUITLAM**

LEGEND (SYMBOLS SHOWN FILLED IN SOLID ARE EXISTING)			
<ul style="list-style-type: none"> <li>PROPOSED CONCRETE BASE WITH FUTURE LUMINAIRE POLE</li> <li>CONCRETE BASE AND JUNCTION BOX</li> <li>JUNCTION BOX - No. DENOTES TYPE</li> <li>LUMINAIRE POLE (SINGLE)</li> <li>DOUBLE LUMINAIRE POLE</li> <li>POST TOP MOUNTED LUMINAIRE</li> <li>TRAFFIC SIGNAL POLE WITH DAVIT AND SIDE OF POLE MOUNTED HEADS</li> <li>COMBINATION LUMINAIRE/DAVIT MOUNTED TRAFFIC SIGNAL POLE</li> <li>POST TOP MOUNTED SIGNAL</li> </ul>	<ul style="list-style-type: none"> <li>EXISTING CONCRETE BASE WITH PROPOSED LUMINAIRE POLE</li> <li>DAVIT MOUNTED ILLUMINATED SIGN POLE WITH AMBER FLASHERS</li> <li>COMBINATION LUMINAIRE/DAVIT MOUNTED ILLUMINATED SIGN WITH AMBER FLASHERS</li> <li>DAVIT MOUNTED SIGN (NON-ILLUMINATED)</li> <li>DAVIT MOUNTED ILLUMINATED SIGN POLE</li> <li>COMBINATION LUMINAIRE/DAVIT MOUNTED NON-ILLUMINATED SIGN POLE</li> <li>BREAKAWAY SIGN (NON-ILLUMINATED)</li> <li>ILLUMINATED BREAKAWAY SIGN</li> </ul>	<ul style="list-style-type: none"> <li>PEC PHOTO ELECTRIC CELL</li> <li>RPVC RIGID P.V.C. CONDUIT</li> <li>RMC RIGID METALLIC CONDUIT</li> <li>F.C. FLEXIBLE CONDUIT (LIQUID TIGHT)</li> <li>OVERHEAD FLASHING BEACON</li> <li>POST MOUNTED FLASHER</li> <li>BACKGUY</li> <li>POWER POLE</li> <li>TELEPHONE POLE</li> <li>POWER/TELEPHONE POLE</li> </ul>	<ul style="list-style-type: none"> <li>TEST SWITCH</li> <li>BREAKER</li> <li>NEUTRAL BAR</li> <li>VEHICLE DETECTOR LOOP</li> <li>SIGNAL HEAD VEHICLE PHASE</li> <li>SIGNAL HEAD PEDESTRIAN PHASE</li> <li>PEDESTRIAN PUSHBUTTON</li> <li>U/G UTILITY</li> <li>'G' DENOTES GAS</li> <li>'S' DENOTES STORM DRAINS/SEWERS</li> <li>'W' DENOTES WATER</li> <li>'E' DENOTES ELECTRIC</li> <li>'T' DENOTES TELEPHONE</li> <li>'SAN' DENOTES SANITARY SEWER</li> </ul>

REVISIONS	
REV	DATE
JAN95	DESIGN/BUILD PROPOSAL ISSUE
A	DEC95 100% DETAILED DESIGN, JUNCTION BOX TYPES REVISED, SIGNAL POLE 2 RE-LOCATED, NEW DUCTING ADDED.
B	JAN96 ISSUED FOR CONSTRUCTION IN BRIDGE DECK ONLY
C	96-01-15 100% SUBMISSION
D	96-02-19 ISSUED FOR CONSTRUCTION
E	96-10-18 RECORD DRAWING

Province of British Columbia  
MINISTRY OF TRANSPORTATION AND HIGHWAYS  
SOUTH COAST REGION

**SIGNAL AND LIGHTING INSTALLATION**  
JOHNSON-MARINER CONNECTOR  
DEWDNEY TRUNK ROAD TO BARNET HIGHWAY  
COQUITLAM

**SITE PLAN ENLARGEMENT - TRAFFIC SIGNAL**

ORIGINAL SIGNED BY  
D. J. WONG  
ELECTRICAL ENGINEER

DATE: 96-05-06  
PROJECT No. 05854  
SHEET 6 OF 10  
REG. DRAWING No. TE-95095-6