

McElhanney Cover A1 - 2024-02-05
DATE: 2025-12-03, 10:26 FILE: x:\211\Projects\211 06584\00 coquitlaurentian crescent watermain upgrades\07_drawing\01_sheets\06584-00-00.dwg

CLIENT

CITY OF COQUITLAM

ADDRESS / CONTACT INFO.

3000 GUILDFORD WAY, COQUITLAM

DESCRIPTION

LAURENTIAN CRESCENT WATERMAIN UPGRADES
AUSTIN AVENUE TO TRENT AVENUE

McELHANNEY PROJECT

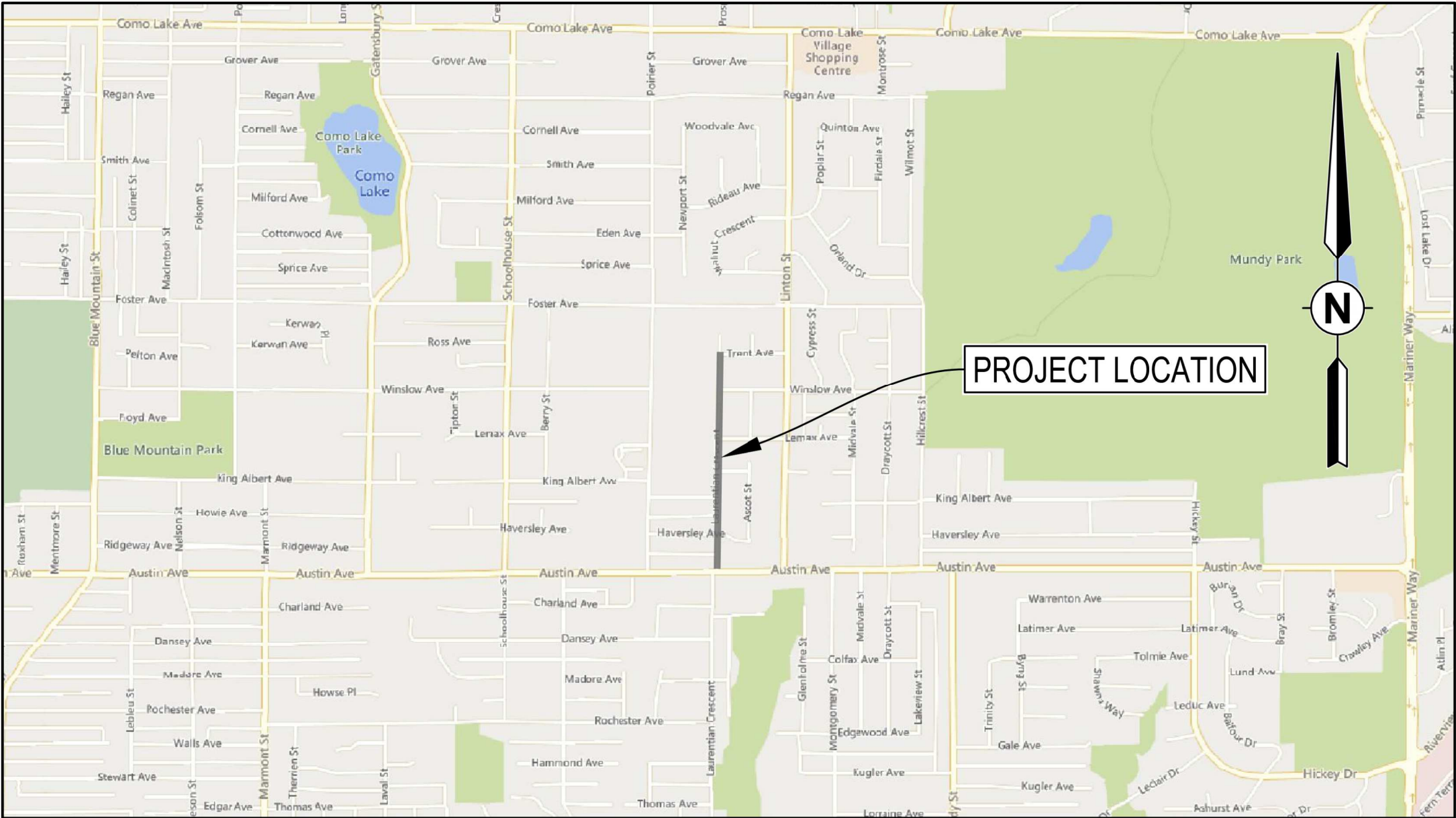
2111-06584-00

CLIENT CONTRACT NUMBER

87432

STATUS

IFT DESIGN SUBMISSION



LOCATION PLAN
SCALE 1:15,000



McElhanney

Suite 2300 Central City Tower
13450 102nd Avenue,
Surrey BC V3T 5X3
Tel. 604 596 0391

DRAWING LIST								
SHEET #	SHEET TITLE	REVISIONS						
		A	B	C	0	1	2	3
00	COVER	X	X	X				
01	SITE PLAN AND GENERAL NOTES	X	X	X				
02	WATERWORKS - STA. 1+000 TO STA. 1+200	X	X	X				
03	WATERWORKS - STA. 1+200 TO STA. 1+460	X	X	X				
04	WATERWORKS - STA. 1+460 TO STA. 1+713	X	X	X				

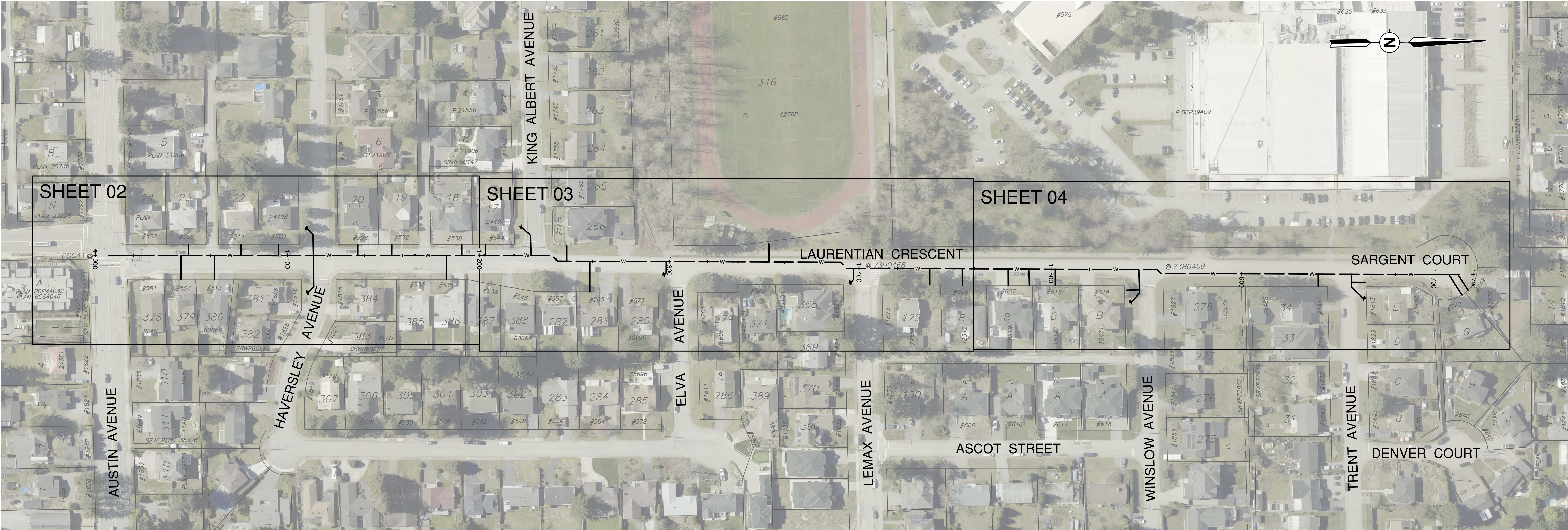
NOTES:

1. WATER MAINS SHALL BE DUCTILE IRON CLASS 50 TR FLEX CEMENT LINED TO AWWA C104.

V-BIO ENCASE ALL WATER MAINS, VALVES, FITTINGS AND HYDRANT ASSEMBLY (INCLUDING LATERALS, VALVE AND STAND PIPE. INSTALLATION FOLLOWS METHOD A (POLYETHYLENE TUBES) UNDER AWWA C105/A21.5.

REFER TO CONTRACT SUPPLEMENTARY CONTRACT SPECIFICATIONS SECTION 31 05 17S AND STANDARD DETAIL COQ-G4 FOR STANDARD TRENCH SECTION AND BEDDING DETAILS.
2. ALL FITTINGS ARE TO BE MECHANICALLY RESTRAINED.
3. WATER SERVICES TO BE INSTALLED IN ACCORDANCE TO COQ-W2B-2 WITH MUNICIPEX INSTEAD OF COPPER WITH #10 AWG TRACER ON EACH SERVICES.
4. CONCRETE THRUST BLOCKS SHALL BE INSTALLED AS PER MMCD 2009 ED. DWG W1.
5. ALL TESTING AND CHLORINATION OF WATERLINES COMPLETED BY THE GENERAL CONTRACTOR AND WITNESSED BY THE CITY OF COQUITLAM.
6. FIRE HYDRANTS AS PER MMCD 2009 ED. DWG. W4.

7. EXISTING UTILITY SERVICE CONNECTIONS ARE NOT SHOWN FOR CLARITY.
8. VERTICAL BENDS WILL BE CONSTRUCTED WITH DEFLECTED JOINTS (NO FITTINGS).
9. PRESSURE AND LEAK TESTING NOT ALLOWED AGAINST LIVE VALVES.
10. CLOSE ALL ABANDONED VALVES AND REMOVE RISERS AND VALVE BOXES.
11. ALL RESTORATION OF BOULEVARD GRASS TO BE DONE WITH SOD UNLESS OTHERWISE APPROVED BY CONTRACT ADMINISTRATOR.
12. WHERE HORIZONTAL SEPARATION BETWEEN WATER MAIN AND EITHER A SANITARY OR A STORM SEWER IS LESS THAN 3 METERS, WRAP ALL WATER MAIN JOINTS WITH HEAT SHRINK PLASTIC, OR PACKED WITH COMPOUND AND WRAPPED WITH PETROLIUM TAPE IN ACCORDANCE WITH THE LATEST VERSION OF AWWA STANDARD C217, AND C214 OR C209.
13. COORDINATE ALL TIE-INS AND SHUT- DOWNS WITH CONTRACT ADMINISTRATOR.



SURVEY CONTROL:

1. THE SURVEY SHOWS HORIZONTAL GROUND LEVEL MEASURED DISTANCES. PRIOR TO COMPUTATION OF NAD83 U.T.M. COORDINATES MULTIPLY BY THE COMBINED FACTOR 0.9995887.
2. DATE OF SURVEY COMPLETION IS APRIL 11, 2025.
3. GEODETIC ELEVATIONS ARE DERIVED FROM TIES TO INTEGRATED SURVEY CONTROL MONUMENT 73H0468, LOCATED AT THE INTERSECTION OF LAURENTIAN CRESCENT AND LEMAX AVENUE. PUBLISHED ELEVATION=149.884m, DATUM IS [CGVD28 (GVRD 2018)]

SURVEY CONTROL MONUMENT REFERENCE DATA			
PUBLISHED			
MONUMENT No.	ELEVATION	EASTING	NORTHING
73H0468	149.882m	511369.652m	5455543.465m

PERMIT TO PRACTICE
McElhanney Ltd.
PERMIT NUMBER: 1002209
Engineers and Geoscientists of BC

BC
1
CALL
1-800-474-6886

THIS DRAWING AND DESIGN IS THE PROPERTY OF McELHANNEY AND SHALL NOT BE USED, REUSED OR REPRODUCED WITHOUT THE CONSENT OF McELHANNEY. McELHANNEY WILL NOT BE HELD RESPONSIBLE FOR THE IMPROPER OR UNAUTHORIZED USE OF THIS DRAWING AND DESIGN.

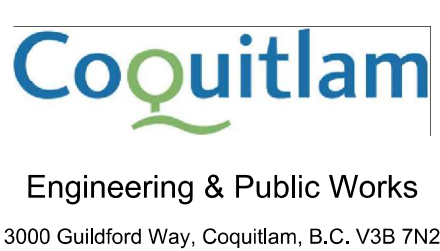
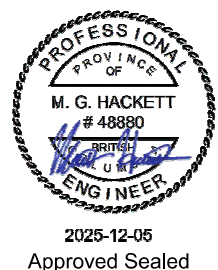
THIS DRAWING AND DESIGN HAS BEEN PREPARED FOR THE CLIENT IDENTIFIED, TO MEET THE STANDARDS AND REQUIREMENTS OF THE APPLICABLE PUBLIC AGENCIES AT THE TIME OF PREPARATION. McELHANNEY, ITS EMPLOYEES, SUBCONSULTANTS AND AGENTS WILL NOT BE LIABLE FOR ANY LOSSES OR OTHER CONSEQUENCES RESULTING FROM THE USE OR RELIANCE UPON, OR ANY CHANGES MADE TO, THIS DRAWING, BY ANY THIRD PARTY, INCLUDING CONTRACTORS, SUPPLIERS, CONSULTANTS AND STAKEHOLDERS, OR THEIR EMPLOYEES OR AGENTS, WITHOUT McELHANNEY'S PRIOR WRITTEN CONSENT.

INFORMATION ON EXISTING UNDERGROUND FACILITIES MAY NOT BE COMPLETE OR ACCURATE. McELHANNEY, ITS EMPLOYEES AND DIRECTORS ARE NOT RESPONSIBLE NOR LIABLE FOR THE LOCATION OF ANY UNDERGROUND CONDUITS, PIPES, CABLES OR OTHER FACILITIES WHETHER SHOWN OR OMITTED FROM THIS PLAN. PRIOR TO CONSTRUCTION CONTRACTOR SHALL EXPOSE LOCATIONS OF ALL EXISTING FACILITIES BY HAND DIGGING OR HYDROVAC AND ADVISE THE ENGINEER OF POTENTIAL CONFLICTS.

Edge of pavement	Hydrant	Sanitary service	Hydro Guy Wire
Watermain and valve	Water blowoff	Sanitary cleanout	Hydro Kiosk
Drainage sewer, MH	Water service	Utility pole (joint pole)	Vegetation Deciduous
Drainage ditch	Catch basin, top inlet	Streetlight, post top	Vegetation Shrub
Sanitary sewer, MH	Catch basin, side inlet	Comb signal pole	Survey Traverse Hub
Sanitary forcemain	Catch basin, round	Traffic signal pole	Survey Iron Pin
Gasmain and valve	Drainage service	Junction box	Survey Lead Plug
Hydro duct, MH	Drainage cleanout		Survey Monument
Telephone duct, MH			

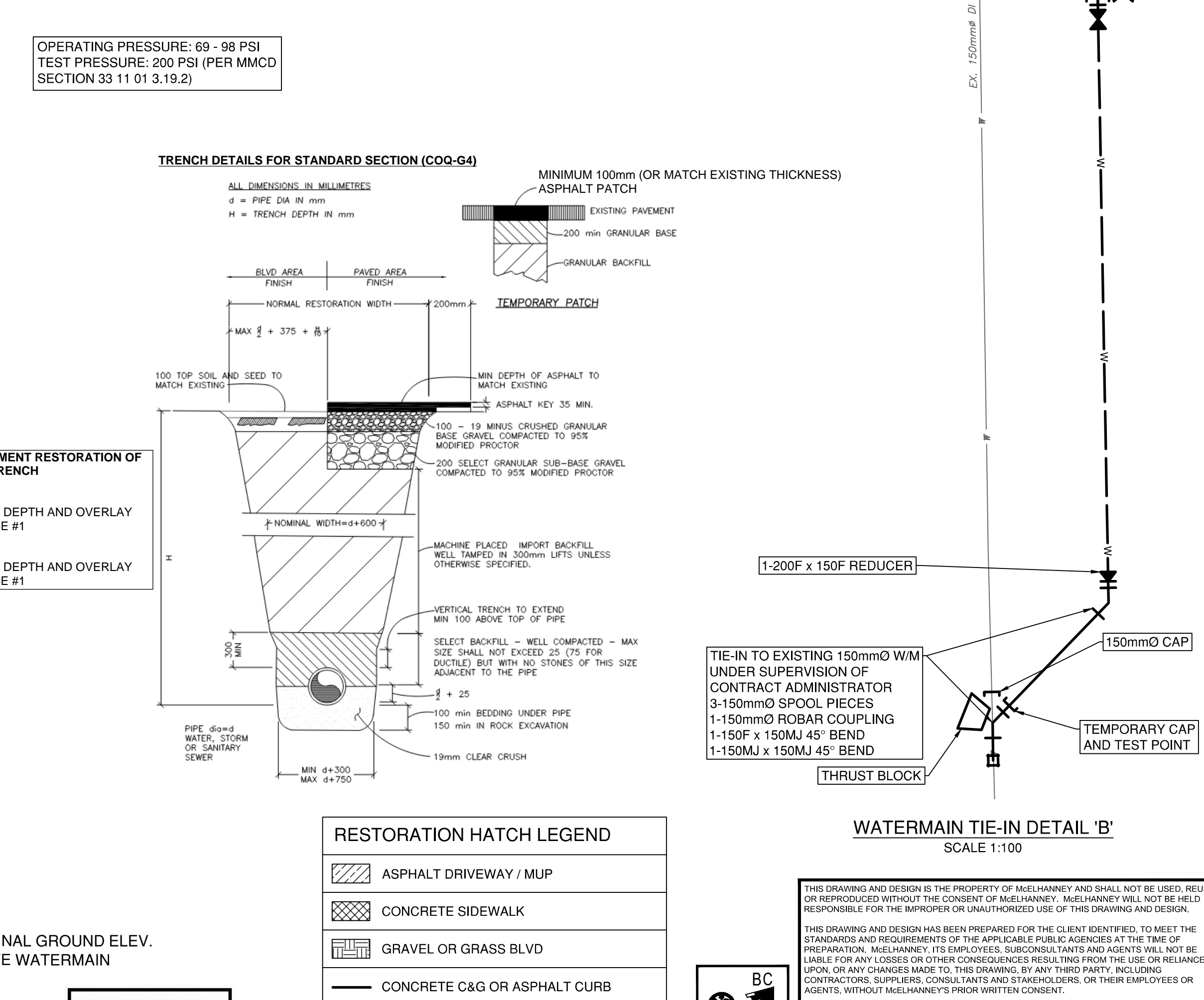
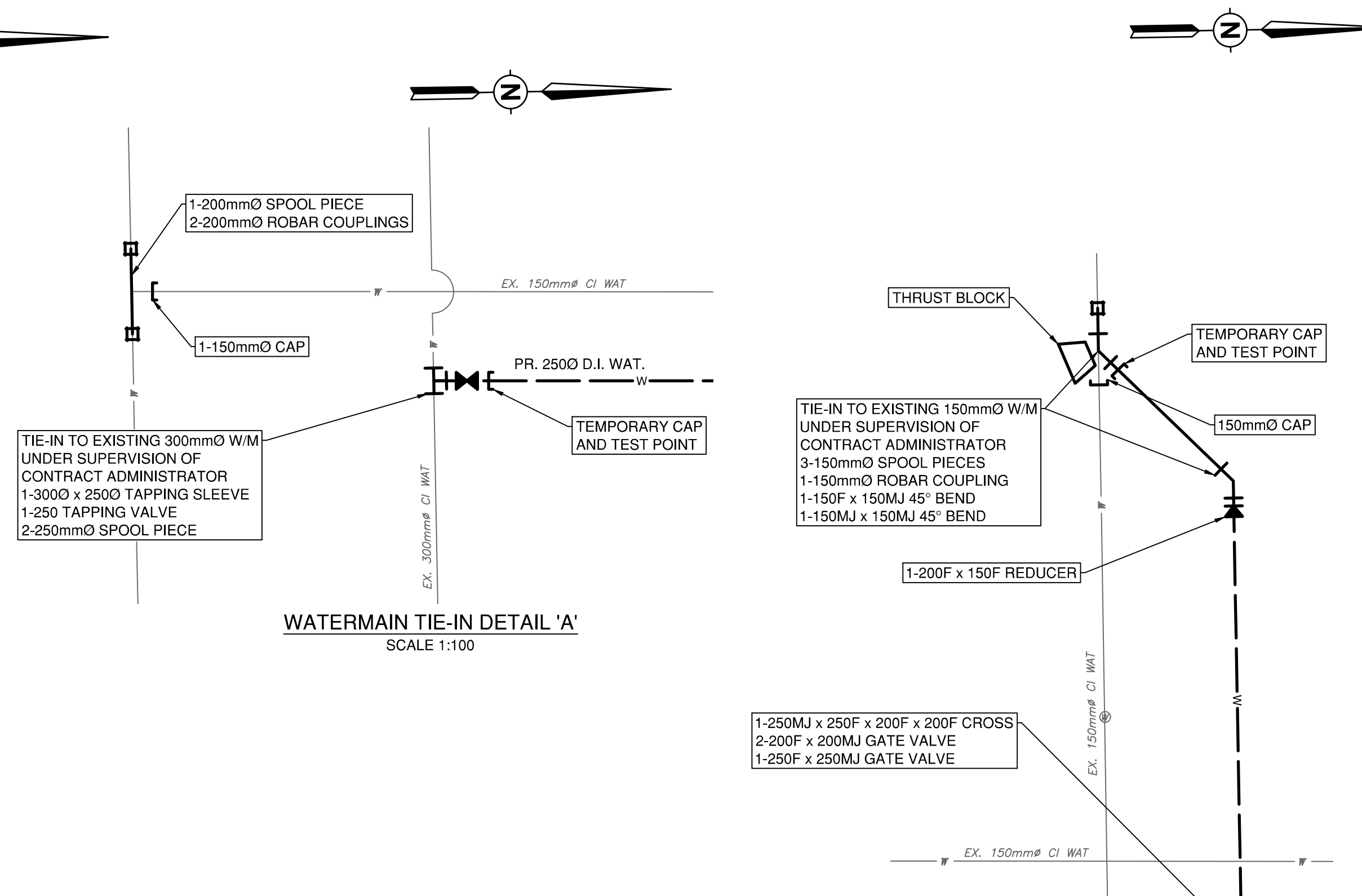
No.	Date	By	Revisions	Eng.
C	2025.12.05	JK	IFT DESIGN SUBMISSION	MH
B	2025.09.16	JK	90% DESIGN SUBMISSION	MH
A	2025.07.18	JK	PRELIMINARY DESIGN SUBMISSION	MH

Design by	Date
JK	July 18, 2025
Drawn by	Date
MIWJ	July 18, 2025
Checked by	Date
MT	July 18, 2025
Approved by	Date
MH	July 18, 2025



Scale
horiz. 1:1000
vert. N/A
Sheet 01 of 04
Eng. Project No. 2111-06584-00


Project
LAURENTIAN CRESCENT WATERMAIN UPGRADES
AUSTIN AVENUE TO TRENT AVENUE
Description
SITE PLAN AND GENERAL NOTES
File: 06584-C0-000



C	2025.12.05	JK	IFT DESIGN SUBMISSION		MH
B	2025.09.16	JK	90% DESIGN SUBMISSION		MH
A	2025.07.18	JK	PRELIMINARY DESIGN SUBMISSION		MH
No.	Date	By	Revisions		Eng.



2025-12-05
Approved Sealed

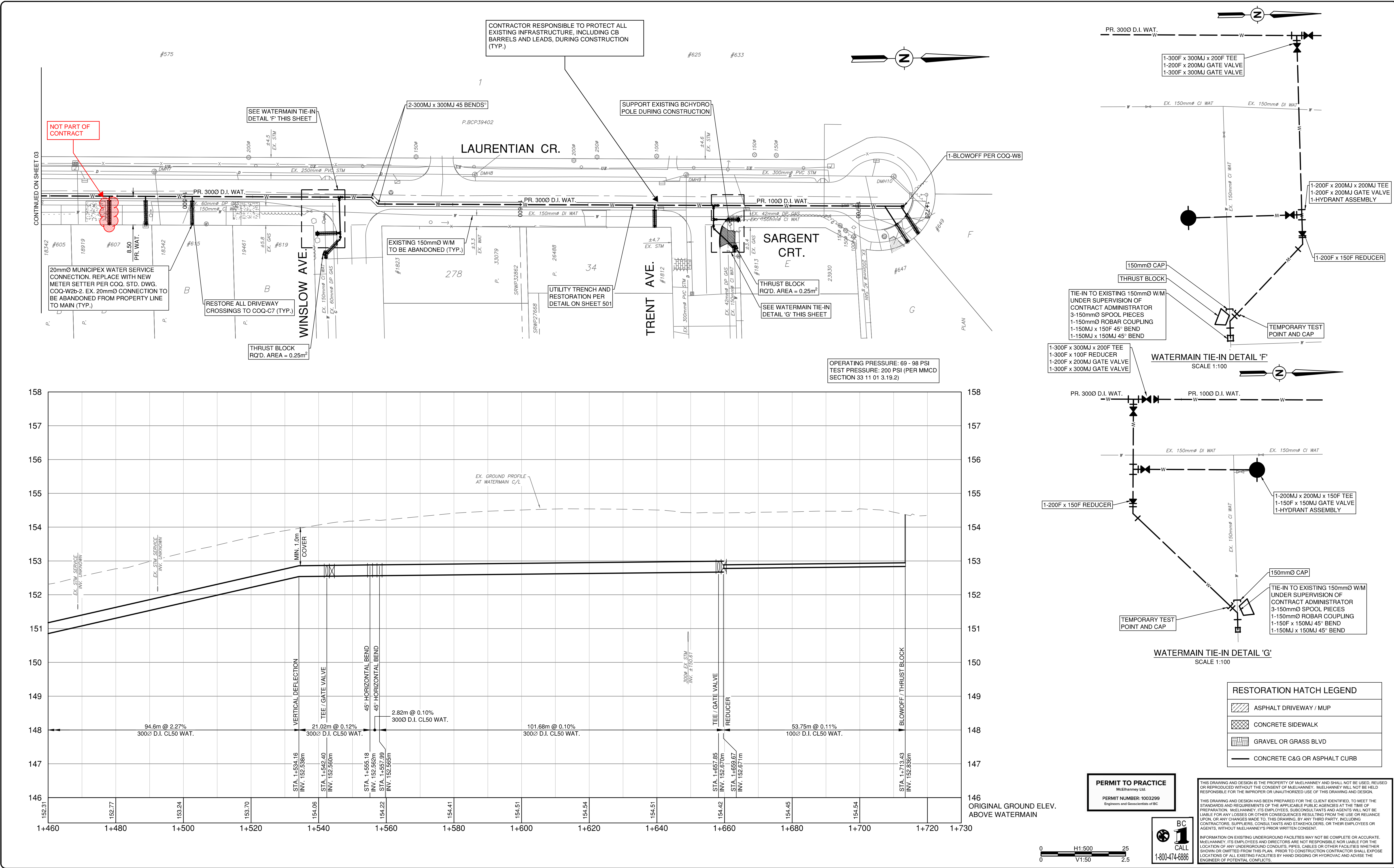


Coquitlam
Engineering & Public Works

3000 Guildford Way, Coquitlam, B.C. V3B 7N2

Project	LAURENTIAN CRESCENT WATERMAIN UPGRADES AUSTIN AVENUE TO TRENT AVENUE
Description	WATERWORKS STA. 1+000 TO STA. 1+200
File:	06584-C0-500

Plot Date: December 3, 2025



Edge of pavement

Watermain and valve

Drainage ditch

Sanitary sewer, MH

Sanitary forcemain

Gasmain and valve

Hydro duct, MH

Telephone duct, MH

Hydrant

Water air valve

Water blowoff

Water service

Catch basin, top inlet

Catch basin, side inlet

Catch basin, round

Drainage service

Drainage cleanout

Sanitary service

Sanitary cleanout

Utility pole(joint pole)

Utility pole with light

Streetlight, davit

Streetlight, post top

Comb signal pole

Traffic signal pole

Junction box

Hydro Guy Wire

Hydro Kiosk

Vegetation Deciduous

Vegetation Shrub

Survey Traverse Hub

Survey Iron Pin

Survey Lead Plug

Survey Monument

No.	Date	By	Revisions
C	2025.12.05	JK	IFT DESIGN SUBMISSION
B	2025.09.16	JK	90% DESIGN SUBMISSION
A	2025.07.18	JK	PRELIMINARY DESIGN SUBMISSION

Design by	Date
JK	July 18, 2025

Drawn by	Date
MWJ	July 18, 2025

Checked by	Date
MT	July 18, 2025

Approved by	Date
MH	July 18, 2025

Design by JK Date July 18, 2025

Drawn by MWJ Date July 18, 2025

Checked by MT Date July 18, 2025

Approved by MH Date July 18, 2025

McElhanney

2025-12-05

Approved Sealed

Coquitlam

Engineering & Public Works

3000 Guildford Way, Coquitlam, B.C. V3B 7N2

Scale 1:500

Scale 1:50

Sheet 04 of 04

Eng. Project No. 2111-06584-00

Project LAURENTIAN CRESCENT WATERMAIN UPGRADES

Description AUSTIN AVENUE TO TRENT AVENUE

STA. 1+460 TO STA. 1+713

File: 06584-C0-500