

McElhanney Cover A1 - 2024-02-05
DATE: 2025-04-23, 12:44 FILE: \\c:\3111\Projects\2110667100\coquitlam\2026\sidewalk\rehabilitation\07_drawing\01_sheets\06671-C04000.dwg

CLIENT

CITY OF COQUITLAM

ADDRESS / CONTACT INFO.

3000 GUILDFORD WAY, COQUITLAM

PROJECT NAME

2026 SIDEWALK REHABILITATION

DESCRIPTION

PANORAMA DRIVE AND PARKWAY BOULEVARD

McELHANNEY PROJECT

2111-06671-00

DRAWING LIST								
SHEET #	SHEET TITLE	REVISIONS						
		A	B	C	0	1	2	3
00	COVER	X	X	X				
01	SITE PLAN	X	X	X				
02	ROADWORKS - PANORAMA DRIVE - STA. 0+990 TO STA. 1+270	X	X	X				
03	ROADWORKS - PANORAMA DRIVE - STA. 1+270 TO STA. 1+550	X	X	X				
04	ROADWORKS - PANORAMA DRIVE - STA. 1+550 TO STA. 1+665	X	X	X				
05	ROADWORKS - PARKWAY BOULEVARD - STA. 3+110 TO STA. 3+405	X	X	X				
06	ROADWORKS - PARKWAY BOULEVARD - STA. 3+405 TO STA. 3+660	X	X	X				
07	ROADWORKS - PANORAMA DRIVE AND PARKWAY BOULEVARD INTERSECTION	X	X	X				
08	ROADWORKS - SPOT ELEVATIONS			X				

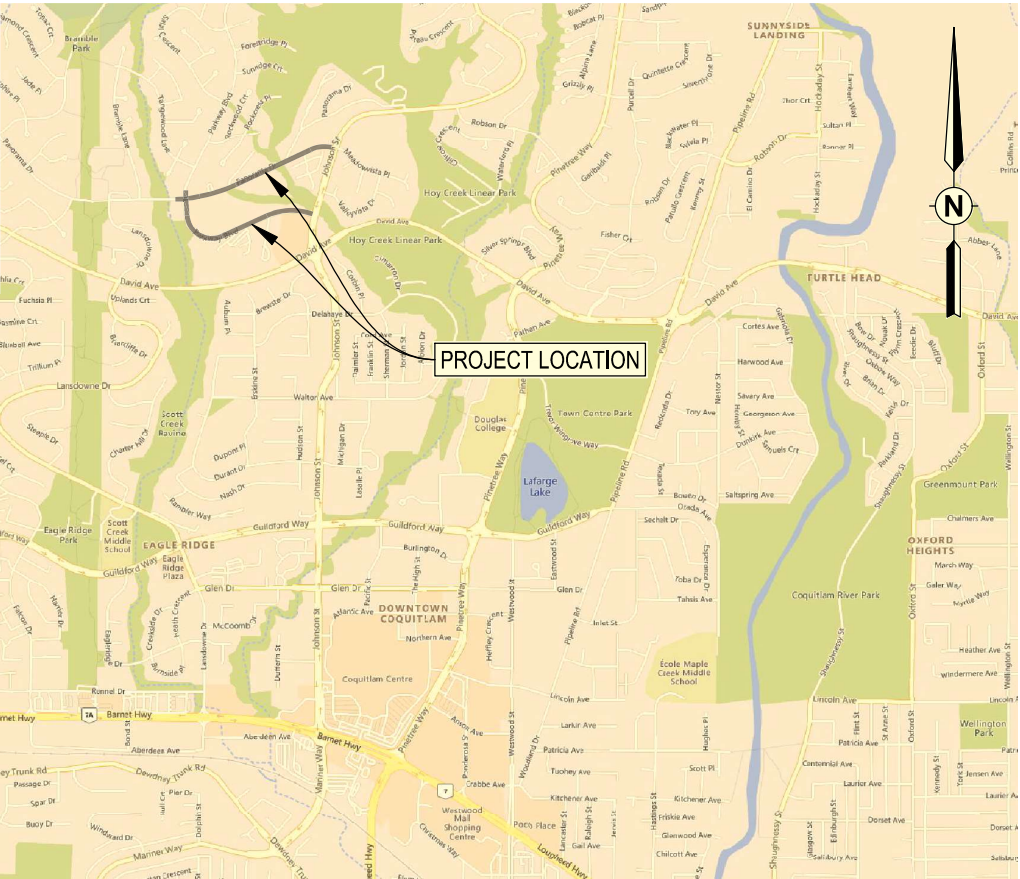
STATUS

IFT DESIGN SUBMISSION



McElhanney

Suite 2300 Central City Tower
13450 102nd Avenue,
Surrey BC V3T 5X3
Tel. 604 596 0391



LOCATION PLAN
SCALE 1:15,000



GENERAL CONSTRUCTION NOTES:

1. ALL WORKS TO CONFORM TO THE MASTER MUNICIPAL CONSTRUCTION DOCUMENTS (2009 EDITION - PLATINUM) AND ALL COQUITLAM APPROVED REVISIONS, AND TO THE CURRENT EDITION OF THE CITY OF COQUITLAM SUPPLEMENTAL SPECIFICATIONS AND STANDARD DETAIL DRAWINGS.
2. REPAIR AND/OR REPLACE ALL INFRASTRUCTURE/PRIVATE PROPERTY DAMAGED OR REMOVED DURING CONSTRUCTION, TO BETTER THAN, OR EQUAL TO PRE-CONSTRUCTION CONDITION.
3. REINSTATE ALL PRIVATE PROPERTY AND BOULEVARDS TO PRE-CONSTRUCTION CONDITIONS.
4. CONTACT MUNICIPALITY URBAN FORESTRY DEPARTMENT PRIOR TO WORKING IN AND AROUND TREES.
5. ENSURE THE CURRENT MUNICIPAL O.H.&S. GROUND DISTURBANCE PRACTICE AND PROCEDURES ARE FOLLOWED. CONTACT BC1 AT 1-800-474-6866 FOR EXTERNAL UTILITY LOCATIONS AT LEAST 72 HOURS PRIOR TO THE START OF CONSTRUCTION.
6. CONFIRM LOCATION AND ELEVATION OF EXISTING UTILITIES AT ALL CROSSINGS AND CONNECTIONS PRIOR TO CONSTRUCTION.
7. ENSURE ALL EXISTING SERVICES STAY IN OPERATIONAL CONDITION DURING CONSTRUCTION.
8. A WALKTHROUGH WITH THE CONTRACT ADMINISTRATOR IS REQUIRED AFTER THE LAYOUT IS DONE. ADJUSTMENT OF BOULEVARD AND SIDEWALK ELEVATION MUST BE DONE AS INSTRUCTED BY THE CONTRACT ADMINISTRATOR. THESE ADJUSTMENTS ARE INCIDENTAL TO THE CONTRACT.

ENVIRONMENTAL NOTES:

USE BEST MANAGEMENT PRACTICES DURING CONSTRUCTION. ADJUST WORK ACTIVITIES DURING PERIODS OF HEAVY RAIN TO MINIMIZE SEDIMENTS ENTERING THE STORM DRAINAGE SYSTEM. BMP'S TO ADHERE TO:

1. CHECK ALL EQUIPMENT FOR FLUID LEAKS PRIOR TO ENTERING THE WORK AREA.
2. NO EQUIPMENT RE-FUELING TO OCCUR IN THE WORK AREA UNLESS SPILL PROTECTION MEASURES ARE IN PLACE.
3. A SPILL KIT IS TO BE MAINTAINED ON SITE THROUGHOUT THE CONSTRUCTION PERIOD.
4. SURFACE WATER IS TO BE MANAGED WITHIN THE WORK AREA AND TREATED BEFORE DISCHARGED. THIS MAY INCLUDE ON-SITE DETENTION AND/OR CULVERT FILTRATION.
5. COVER EXPOSED SOILS IN INCLEMENT WEATHER w/ TARP, HYDRO SEED OR ORGANIC LEAF MULCH.
6. STOCKPILE SOILS AWAY FROM CULVERT INLETS AND ENSURE THEY ARE COVERED IF LEFT FOR MORE THAN 48 HOURS.
7. SURROUND ALL STREET TREES ADJACENT TO PROPOSED SIDEWALK REPLACEMENT WITH SNOW FENCING AT DRIP LINE OR CRITICAL ROOT ZONE OF TREE DURING CONSTRUCTION. CONTACT MUNICIPAL ARBORIST PRIOR TO BEGINNING CONSTRUCTION. REFER TO DETAIL ON SHEET 105.

ROADWORKS NOTES:

1. ALL WORK TO CONFORM TO THE MASTER MUNICIPAL CONSTRUCTION DOCUMENTS (2009 EDITION - PLATINUM) AND ALL COQUITLAM APPROVED REVISIONS, AND TO THE CURRENT EDITION OF THE CITY OF COQUITLAM SUPPLEMENTAL SPECIFICATIONS AND STANDARD DETAIL DRAWINGS.
2. CHANGES OF GRADE AND DIRECTION FORMED BY SMOOTH VERTICAL AND HORIZONTAL CURVES.
3. ALL EXISTING MANHOLE FRAMES, WATER AND GAS VALVE BOXES, SURVEY MONUMENT BOXES ETC. TO BE ADJUSTED TO SUIT NEW PAVEMENT GRADE AND CROSS-FALL.

SIGNAGE AND PAVEMENT MARKING NOTES:

1. ALL PAVEMENT MARKINGS AND SIGNAGE AS PER THE MANUAL OF UNIFORM TRAFFIC CONTROL DEVICES FOR CANADA.
2. ALL PAVEMENT MARKINGS ARE THERMOPLASTIC.

THIS DRAWING AND DESIGN IS THE PROPERTY OF McELHANNY AND SHALL NOT BE USED, REUSED OR REPRODUCED WITHOUT THE CONSENT OF McELHANNY. McELHANNY WILL NOT BE HELD RESPONSIBLE FOR THE IMPROPER OR UNAUTHORIZED USE OF THIS DRAWING AND DESIGN.

THIS DRAWING AND DESIGN HAS BEEN PREPARED FOR THE CLIENT IDENTIFIED. TO MEET THE STANDARDS AND REQUIREMENTS OF THE APPLICABLE PUBLIC AGENCIES AT THE TIME OF PREPARATION. McELHANNY, ITS EMPLOYEES, SUBCONSULTANTS AND AGENTS WILL NOT BE LIABLE FOR ANY LOSSES OR OTHER CONSEQUENCES RESULTING FROM THE USE OR RELIANCE UPON, OR ANY CHANGES MADE TO, THIS DRAWING, BY ANY THIRD PARTY, INCLUDING CONTRACTORS, SUPPLIERS, CONSULTANTS AND STAKEHOLDERS, OR THEIR EMPLOYEES OR AGENTS, WITHOUT McELHANNY'S PRIOR WRITTEN CONSENT.

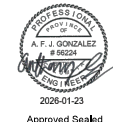
INFORMATION ON EXISTING UNDERGROUND FACILITIES MAY NOT BE COMPLETE OR ACCURATE. McELHANNY, ITS EMPLOYEES AND DIRECTORS ARE NOT RESPONSIBLE NOR LIABLE FOR THE LOCATION OF ANY UNDERGROUND CONDUITS, PIPES, CABLES OR OTHER FACILITIES WHETHER SHOWN OR OMITTED FROM THIS PLAN. PRIOR TO CONSTRUCTION CONTRACTOR SHALL EXPOSE LOCATIONS OF ALL EXISTING FACILITIES BY HAND DIGGING OR HYDROVAC AND ADVISE THE ENGINEER OF POTENTIAL CONFLICTS.



Edge of pavement	Hydrant	Sanitary service	Hydro Guy Wire
Watermain and valve	Water air valve	Sanitary cleanout	Hydro Kiosk
Drainage sewer, MH	Water blowoff	Utility pole (joint pole)	Vegetation Conifer
Drainage ditch	Water service	Utility pole with light	Vegetation Deciduous
Sanitary sewer, MH	Catch basin, top inlet	Streetlight, davit	Vegetation Shrub
Sanitary forcemain	Catch basin, side inlet	Streetlight, post top	Survey Traverse Hub
Gasmain and valve	Catch basin, round	Comb signal pole	Survey Iron Pin
Hydro duct, MH	Drainage service	Traffic signal pole	Survey Lead Plug
Telephone duct, MH	Drainage cleanout	Junction box	Survey Monument

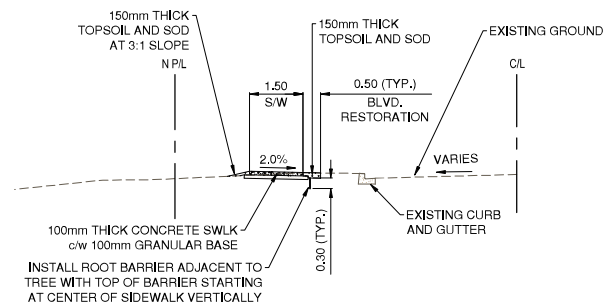
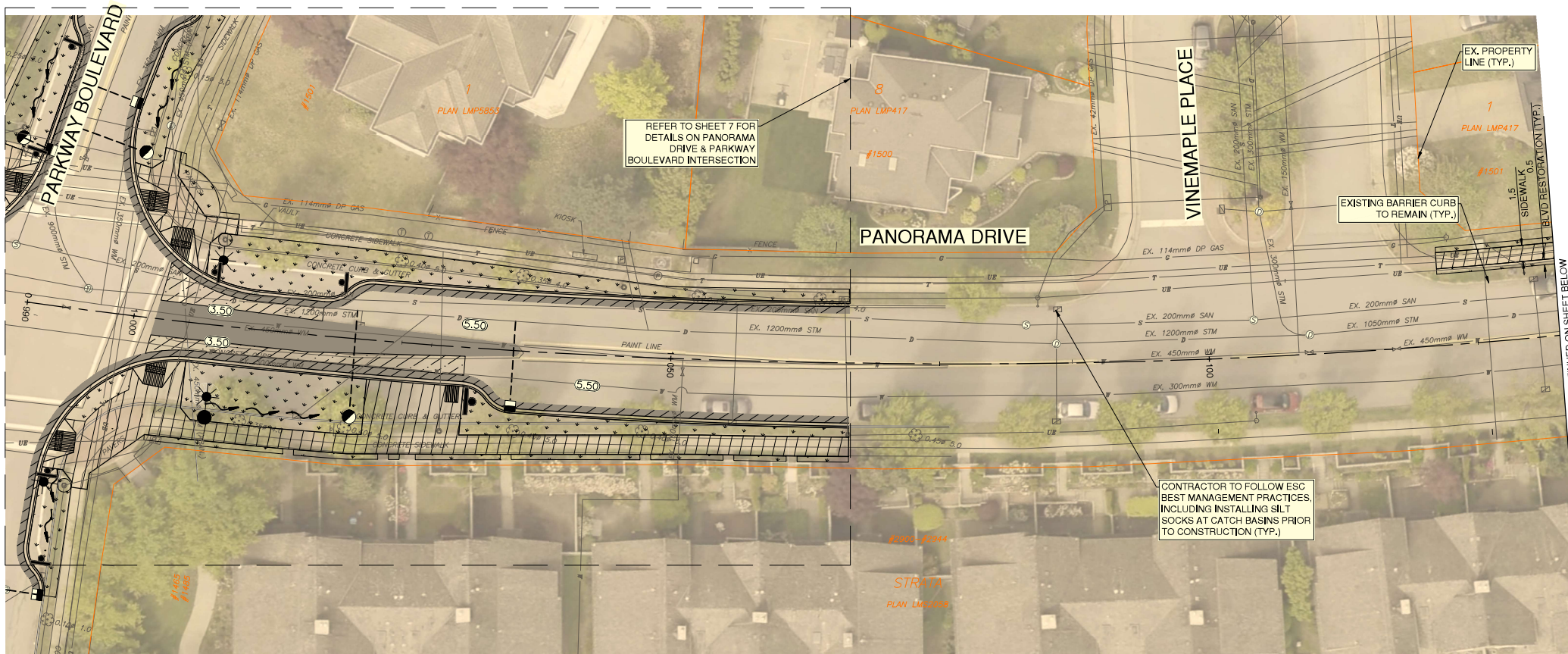
No.	Date	By	Revisions	Eng.
C	2025-01-23	JK	1ST DESIGN SUBMISSION	AG
B	2025-01-07	JK	DETAILED DESIGN SUBMISSION	AG
A	2025-10-29	JK	PRELIMINARY DESIGN SUBMISSION	AG

Design by	Date
JK	October 29, 2025
Drawn by	Date
MMW	October 29, 2025
Checked by	Date
MH	October 29, 2025
Approved by	Date
AG	October 29, 2025

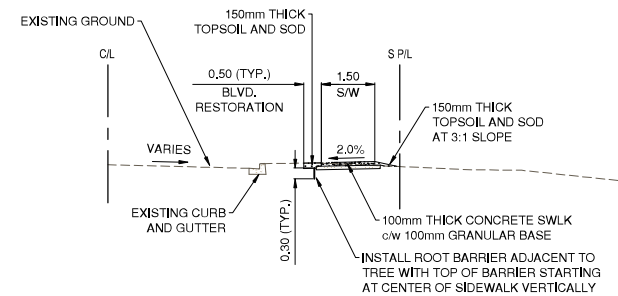


Scale	1:1250	Scale	N/A
horiz.		vert.	
Sheet	01	of	08
Eng. Project No.	2111-06671-00		

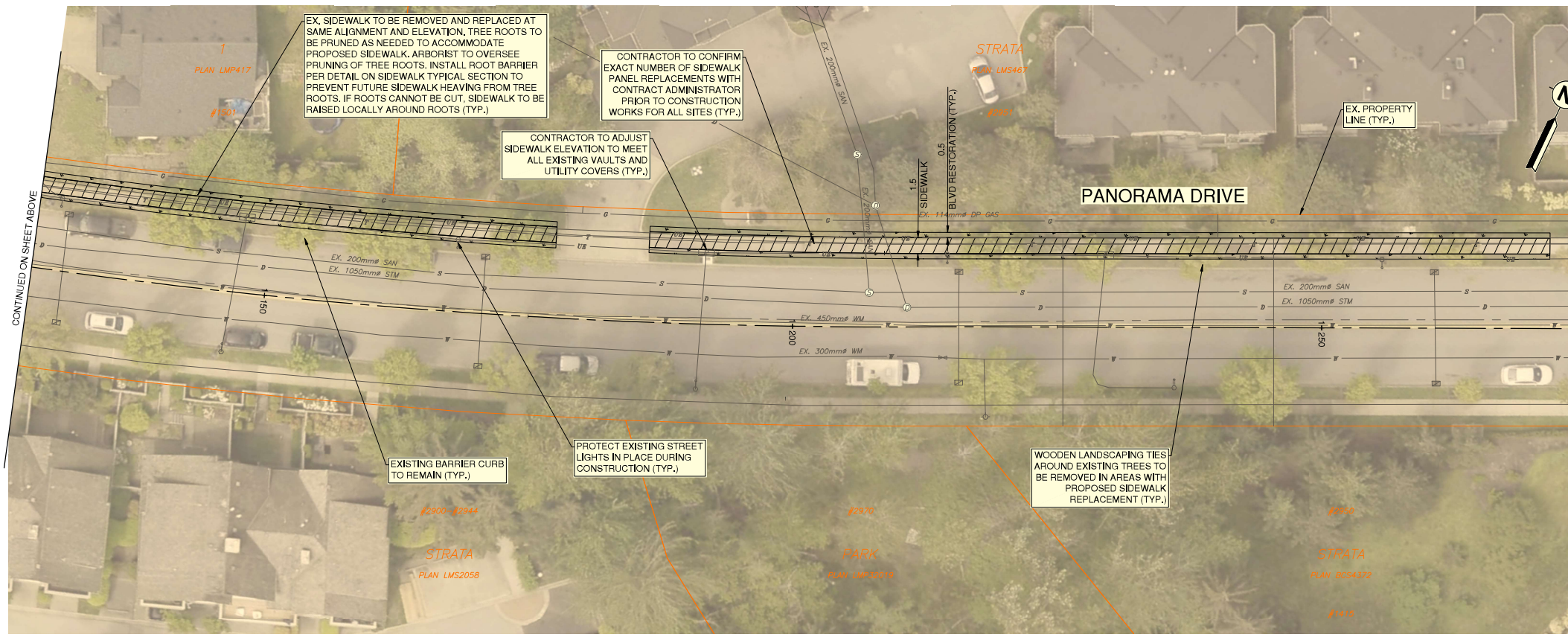
Project	2026 SIDEWALK REHABILITATION
	PANORAMA DR. AND PARKWAY BLVD.
Description	SITE PLAN
	PANORAMA DRIVE AND PARKWAY BOULEVARD
File	06671-C0-000



PANORAMA DRIVE - NORTH SIDEWALK
TYPICAL SECTION
SCALE: 1:100



PANORAMA DRIVE - SOUTH SIDEWALK
TYPICAL SECTION
SCALE: 1:100



LEGEND	
	CONCRETE DRIVEWAY - 190mm CONCRETE w/ 100mm GRANULAR BASE
	CONCRETE SIDEWALK - 100mm THICK CONCRETE THICKENED TO 190mm THROUGH DRIVEWAYS AND RAMP PER COQ-C7, COQ-C7B
	BOULEVARD - 150mm TOPSOIL AND SOD

THIS DRAWING AND DESIGN IS THE PROPERTY OF McELHANNY AND SHALL NOT BE USED, REPRODUCED OR REPRODUCED WITHOUT THE CONSENT OF McELHANNY. McELHANNY WILL NOT BE HELD RESPONSIBLE FOR THE IMPROPER OR UNAUTHORIZED USE OF THIS DRAWING AND DESIGN.

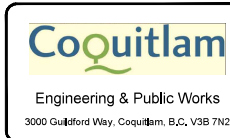
THIS DRAWING AND DESIGN HAS BEEN PREPARED FOR THE CLIENT IDENTIFIED. TO MEET THE STANDARDS AND REQUIREMENTS OF THE APPLICABLE PUBLIC AGENCIES AT THE TIME OF PREPARATION, McELHANNY, ITS EMPLOYEES, SUBCONSULTANTS AND AGENTS WILL NOT BE LIABLE FOR ANY LOSSES OR OTHER CONSEQUENCES RESULTING FROM THE USE OR RELIANCE UPON, OR ANY CHANGES MADE TO, THIS DRAWING, BY ANY THIRD PARTY, INCLUDING CONTRACTORS, SUPPLIERS, CONSULTANTS AND STAKEHOLDERS, OR THEIR EMPLOYEES OR AGENTS, WITHOUT McELHANNY'S PRIOR WRITTEN CONSENT.

INFORMATION ON EXISTING UNDERGROUND FACILITIES MAY NOT BE COMPLETE OR ACCURATE. McELHANNY, ITS EMPLOYEES AND DIRECTORS ARE NOT RESPONSIBLE NOR LIABLE FOR THE LOCATION OF ANY UNDERGROUND CONDUITS, PIPES, CABLES OR OTHER FACILITIES WHETHER SHOWN OR OMITTED FROM THIS PLAN. PRIOR TO CONSTRUCTION CONTRACTOR SHALL EXPOSE LOCATIONS OF ALL EXISTING FACILITIES BY HAND DIGGING OR HYDROVAC AND ADVISE THE ENGINEER OF POTENTIAL CONFLICTS.

Edge of pavement	Hydrant	Sanitary service	Hydro Guy Wire
Watermain and valve	Water air valve	Sanitary cleanout	Hydro Kiosk
Drainage sewer, MH	Water blowoff	Utility pole (joint pole)	Vegetation Conifer
Drainage ditch	Water service	Utility pole with light	Vegetation Deciduous
Sanitary sewer, MH	Catch basin, top inlet	Streetlight, davit	Vegetation Shrub
Sanitary forcemain	Catch basin, side inlet	Streetlight, post top	Survey Traverse Hub
Gasmain and valve	Catch basin, round	Comb signal pole	Survey Iron Pin
Hydro duct, MH	Drainage service	Traffic signal pole	Survey Lead Plug
Telephone duct, MH	Drainage cleanout	Junction box	Survey Monument

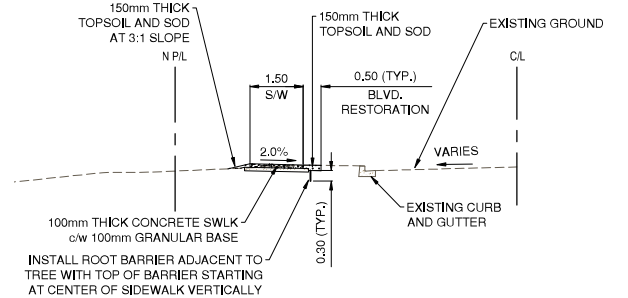
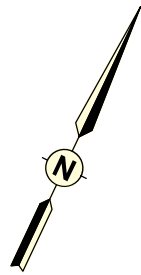
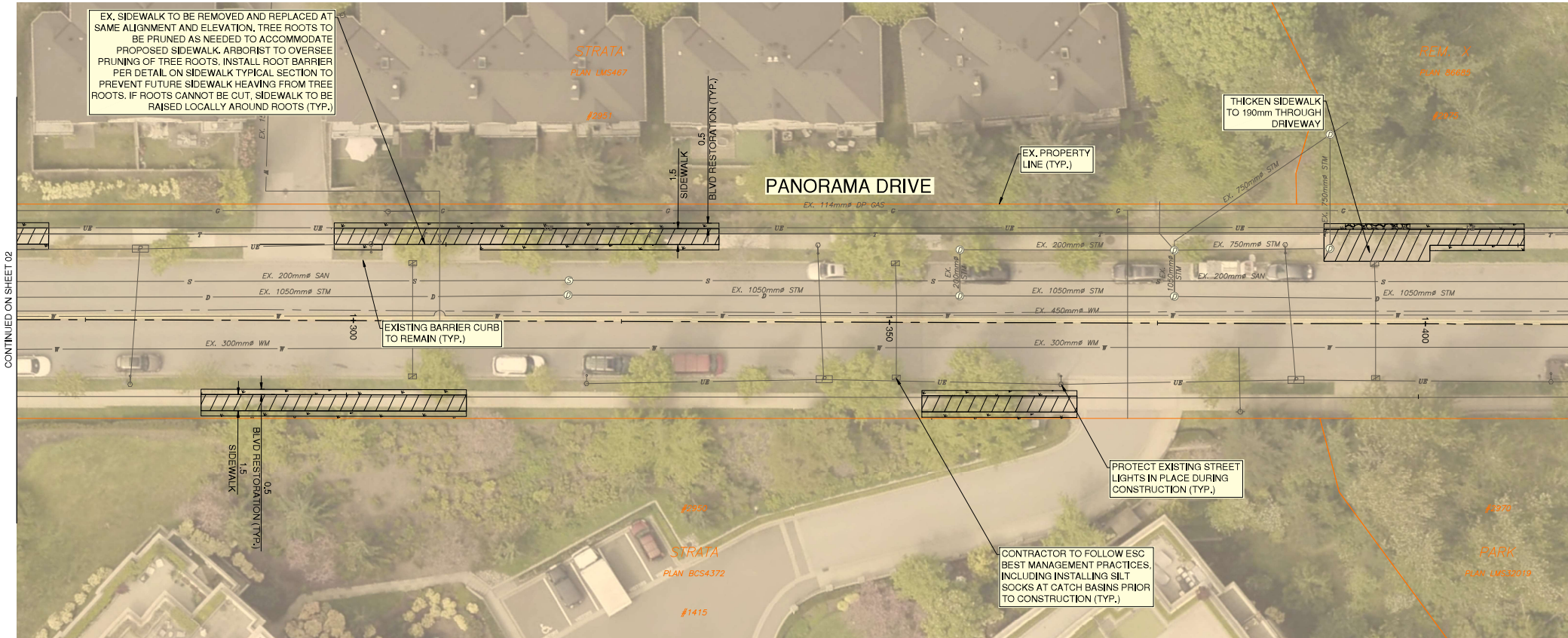
No.	Date	By	Revisions	Eng.
C	2025-01-23	JK	1ST DESIGN SUBMISSION	AG
B	2025-01-27	JK	DETAILED DESIGN SUBMISSION	AG
A	2025-10-29	JK	PRELIMINARY DESIGN SUBMISSION	AG

Design by	Date
JK	October 29, 2025
Drawn by	Date
MMW	October 29, 2025
Checked by	Date
MH	October 29, 2025
Approved by	Date
AG	October 29, 2025

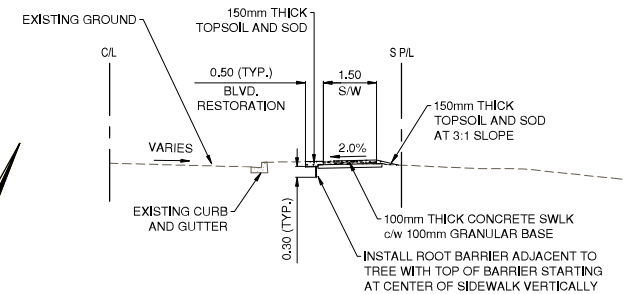
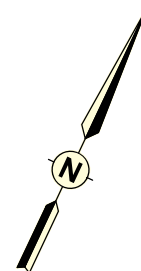
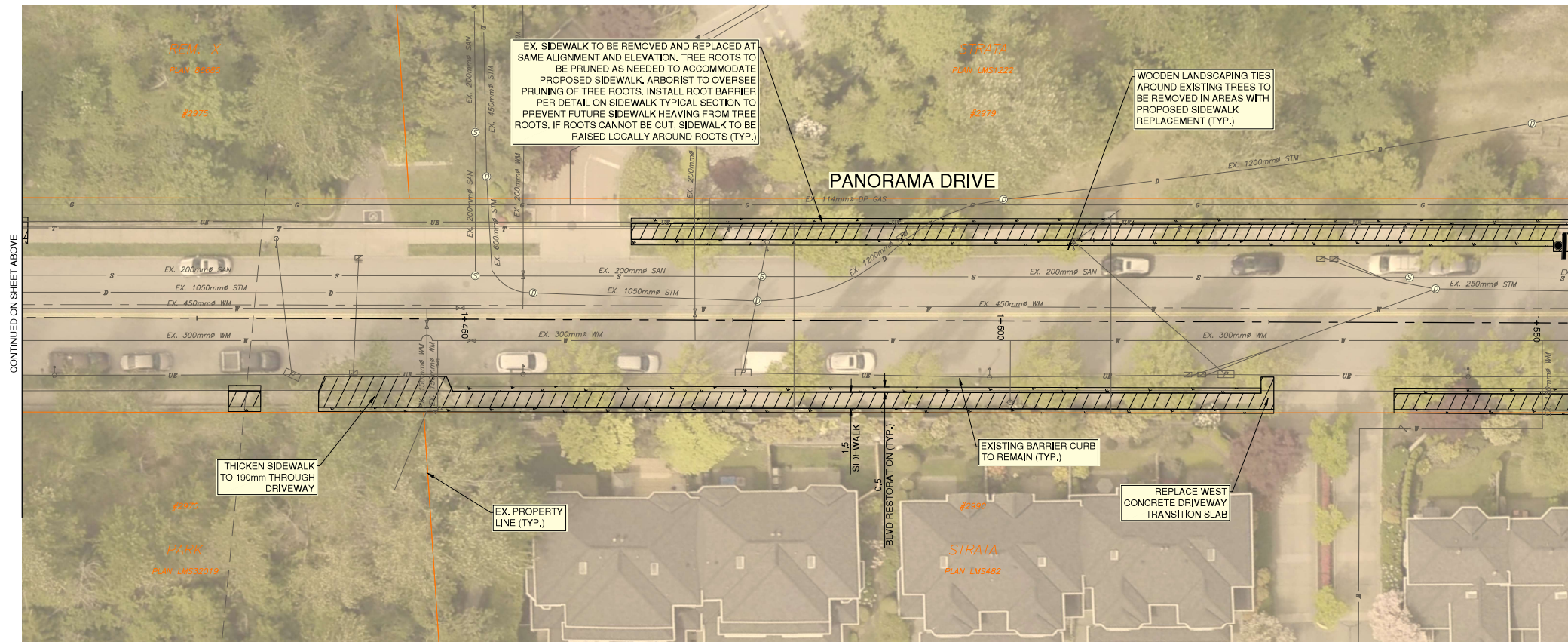


Scale	1:250	Scale	N/A
horiz.		vert.	
Sheet	02	of	08
Eng. Project No.	2111-06671-00		

Project	2026 SIDEWALK REHABILITATION PANORAMA DR. AND PARKWAY BLVD. ROADWORKS
Description	PANORAMA DRIVE - STA. 0+990 TO STA. 1+270
File	06671-C0-100



PANORAMA DRIVE - NORTH SIDEWALK
TYPICAL SECTION
SCALE: 1:100



PANORAMA DRIVE - SOUTH SIDEWALK
TYPICAL SECTION
SCALE: 1:100

LEGEND	
	CONCRETE DRIVEWAY - 190mm CONCRETE w/ 100mm GRANULAR BASE
	CONCRETE SIDEWALK - 100mm THICK CONCRETE, THICKENED TO 190mm THROUGH DRIVEWAYS AND RAMP PER COQ-C7, COQ-C7B
	BOULEVARD - 150mm TOPSOIL AND SOD

THIS DRAWING AND DESIGN IS THE PROPERTY OF McELHANNY AND SHALL NOT BE USED, REPRODUCED OR REPRODUCED WITHOUT THE CONSENT OF McELHANNY. McELHANNY WILL NOT BE HELD RESPONSIBLE FOR THE IMPROPER OR UNAUTHORIZED USE OF THIS DRAWING AND DESIGN.

THIS DRAWING AND DESIGN HAS BEEN PREPARED FOR THE CLIENT IDENTIFIED. TO MEET THE STANDARDS AND REQUIREMENTS OF THE APPLICABLE PUBLIC AGENCIES AT THE TIME OF PREPARATION. McELHANNY, ITS EMPLOYEES, SUBCONSULTANTS AND AGENTS WILL NOT BE LIABLE FOR ANY LOSSES OR OTHER CONSEQUENCES RESULTING FROM THE USE OR RELIANCE UPON, OR ANY CHANGES MADE TO, THIS DRAWING, BY ANY THIRD PARTY, INCLUDING CONTRACTORS, SUPPLIERS, CONSULTANTS AND STAKEHOLDERS, OR THEIR EMPLOYEES OR AGENTS, WITHOUT McELHANNY'S PRIOR WRITTEN CONSENT.

INFORMATION ON EXISTING UNDERGROUND FACILITIES MAY NOT BE COMPLETE OR ACCURATE. McELHANNY, ITS EMPLOYEES AND DIRECTORS ARE NOT RESPONSIBLE NOR LIABLE FOR THE LOCATION OF ANY UNDERGROUND CONDUITS, PIPES, CABLES OR OTHER FACILITIES, WHETHER SHOWN OR OMITTED FROM THIS PLAN. PRIOR TO CONSTRUCTION CONTRACTOR SHALL EXPOSE LOCATIONS OF ALL EXISTING FACILITIES BY HAND DIGGING OR HYDROVAC AND ADVISE THE ENGINEER OF POTENTIAL CONFLICTS.



0 1:250 10

Edge of pavement	Hydrant	Sanitary service	Hydro Guy Wire
Watermain and valve	Water air valve	Sanitary cleanout	Hydro Kiosk
Drainage sewer, MH	Water blowoff	Utility pole (joint pole)	Vegetation Conifer
Drainage ditch	Water service	Utility pole with light	Vegetation Deciduous
Sanitary sewer, MH	Catch basin, top inlet	Streetlight, davit	Vegetation Shrub
Sanitary forcemain	Catch basin, side inlet	Streetlight, post top	Survey Traverse Hub
Gasmain and valve	Catch basin, round	Comb signal pole	Survey Iron Pin
Hydro duct, MH	Drainage service	Traffic signal pole	Survey Lead Plug
Telephone duct, MH	Drainage cleanout	Junction box	Survey Monument

Sanitary service	Hydro Guy Wire
Sanitary cleanout	Hydro Kiosk
Utility pole (joint pole)	Vegetation Conifer
Utility pole with light	Vegetation Deciduous
Streetlight, davit	Vegetation Shrub
Streetlight, post top	Survey Traverse Hub
Comb signal pole	Survey Iron Pin
Traffic signal pole	Survey Lead Plug
Junction box	Survey Monument

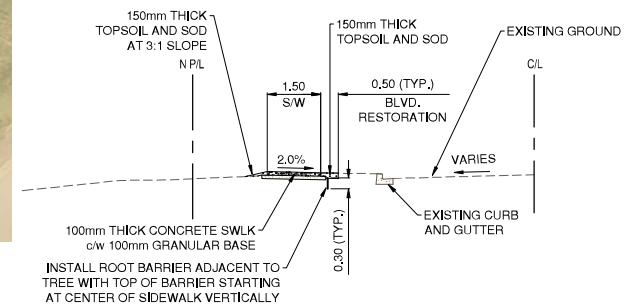
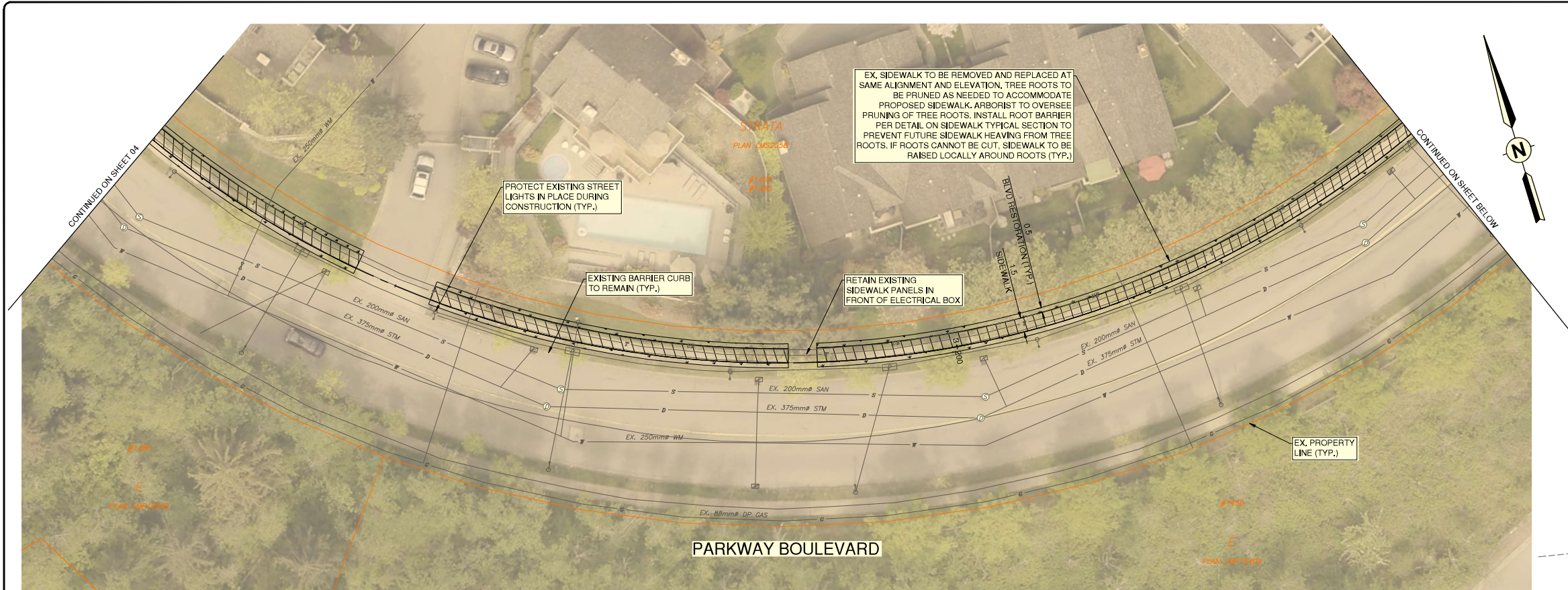
No.	Date	By	Revisions	Eng.
C	2025-01-23	JK	1ST DESIGN SUBMISSION	AG
B	2025-01-07	JK	DETAILED DESIGN SUBMISSION	AG
A	2025-10-29	JK	PRELIMINARY DESIGN SUBMISSION	AG

Design by	Date
JK	October 29, 2025
Drawn by	Date
MMW	October 29, 2025
Checked by	Date
MH	October 29, 2025
Approved by	Date
AG	October 29, 2025

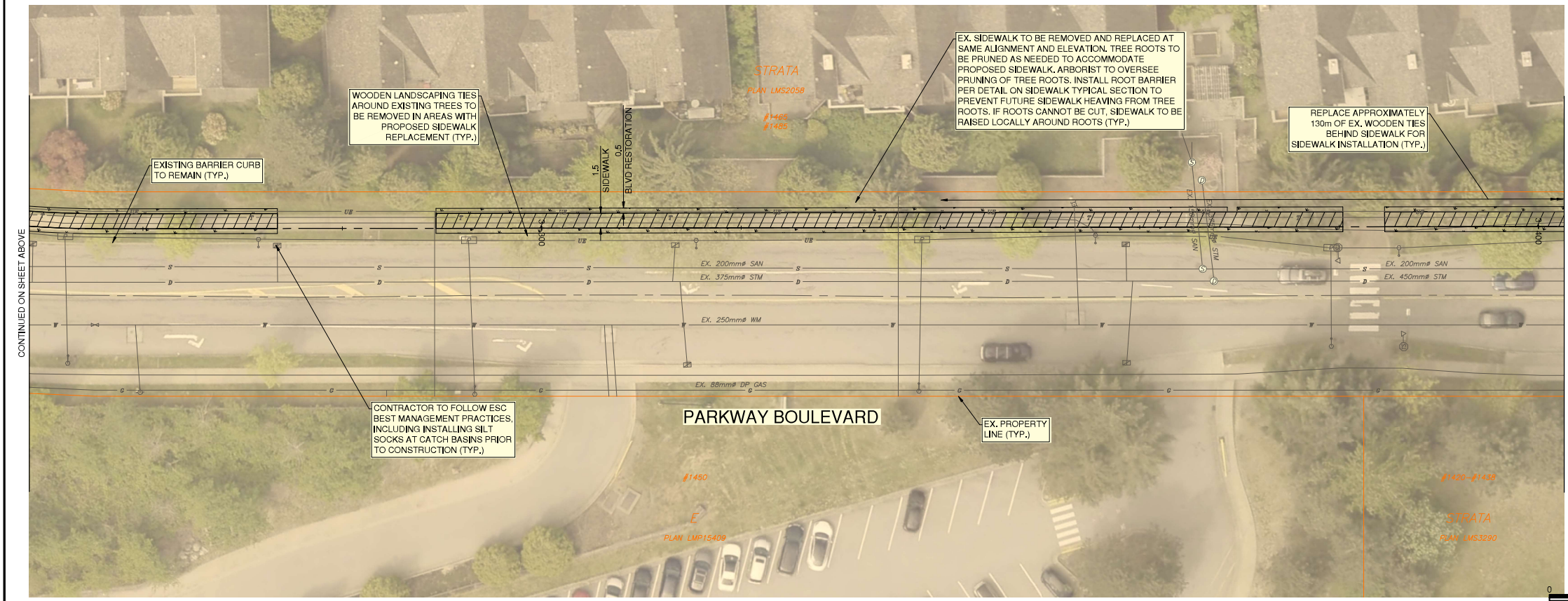


Scale	1:250	Scale	N/A
horiz.		vert.	
Sheet	03	of	08
Eng. Project No.	2111-06671-00		

Project	2026 SIDEWALK REHABILITATION PANORAMA DR. AND PARKWAY BLVD. ROADWORKS
Description	PANORAMA DRIVE - STA. 1+270 TO STA. 1+550
File	06671-C0-100



PARKWAY BOULEVARD - NORTH SIDEWALK
TYPICAL SECTION
SCALE: 1:100



LEGEND	
	CONCRETE DRIVEWAY - 190mm CONCRETE w/ 100mm GRANULAR BASE
	CONCRETE SIDEWALK - 100mm THICK CONCRETE, THICKENED TO 190mm THROUGH DRIVEWAYS AND RAMP PER COQ-C7, COQ-C7B
	BOULEVARD - 150mm TOPSOIL AND SOD

THIS DRAWING AND DESIGN IS THE PROPERTY OF McELHANNY AND SHALL NOT BE USED, REUSED OR REPRODUCED WITHOUT THE CONSENT OF McELHANNY. McELHANNY WILL NOT BE HELD RESPONSIBLE FOR THE IMPROPER OR UNAUTHORIZED USE OF THIS DRAWING AND DESIGN.

THIS DRAWING AND DESIGN HAS BEEN PREPARED FOR THE CLIENT IDENTIFIED. TO MEET THE STANDARDS AND REQUIREMENTS OF THE APPLICABLE PUBLIC AGENCIES AT THE TIME OF PREPARATION. McELHANNY, ITS EMPLOYEES, SUBCONSULTANTS AND AGENTS WILL NOT BE LIABLE FOR ANY LOSSES OR OTHER CONSEQUENCES RESULTING FROM THE USE OR RELIANCE UPON, OR ANY CHANGES MADE TO, THIS DRAWING, BY ANY THIRD PARTY, INCLUDING CONTRACTORS, SUPPLIERS, CONSULTANTS AND STAKEHOLDERS, OR THEIR EMPLOYEES OR AGENTS, WITHOUT McELHANNY'S PRIOR WRITTEN CONSENT.

INFORMATION ON EXISTING UNDERGROUND FACILITIES MAY NOT BE COMPLETE OR ACCURATE. McELHANNY, ITS EMPLOYEES AND DIRECTORS ARE NOT RESPONSIBLE NOR LIABLE FOR THE LOCATION OF ANY UNDERGROUND CONDUITS, PIPES, CABLES OR OTHER FACILITIES WHETHER SHOWN OR OMITTED FROM THIS PLAN. PRIOR TO CONSTRUCTION CONTRACTOR SHALL EXPOSE LOCATIONS OF ALL EXISTING FACILITIES BY HAND DIGGING OR HYDROVAC AND ADVISE THE ENGINEER OF POTENTIAL CONFLICTS.

Edge of pavement	Hydrant	Sanitary service	Hydro Guy Wire
Watermain and valve	Water air valve	Sanitary cleanout	Hydro Kiosk
Drainage sewer, MH	Water blowoff	Utility pole (joint pole)	Vegetation Conifer
Drainage ditch	Water service	Utility pole with light	Vegetation Deciduous
Sanitary sewer, MH	Catch basin, top inlet	Streetlight, davit	Vegetation Shrub
Sanitary forcemain	Catch basin, side inlet	Streetlight, post top	Survey Traverse Hub
Gasmain and valve	Catch basin, round	Comb signal pole	Survey Iron Pin
Hydro duct, MH	Drainage service	Traffic signal pole	Survey Lead Plug
Telephone duct, MH	Drainage cleanout	Junction box	Survey Monument

No.	Date	By	Revisions	Eng.
C	2026-01-23	JK	1ST DESIGN SUBMISSION	AG
B	2026-01-07	JK	DETAILED DESIGN SUBMISSION	AG
A	2025-10-29	JK	PRELIMINARY DESIGN SUBMISSION	AG

Design by JK Date October 29, 2025

Drawn by MWJ Date October 29, 2025

Checked by MH Date October 29, 2025

Approved by AG Date October 29, 2025

McElhanny

PERMIT TO PRACTICE
McElhanny Inc.
A.F. J. GONZALEZ
#46024



Coquitlam

Engineering & Public Works

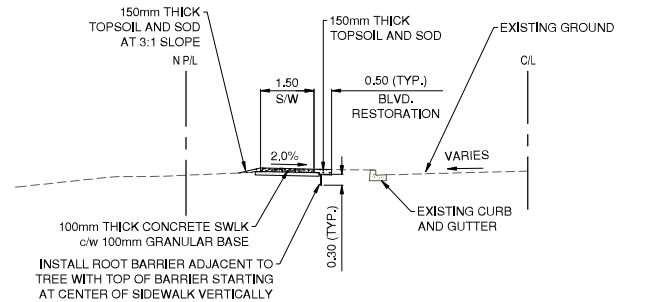
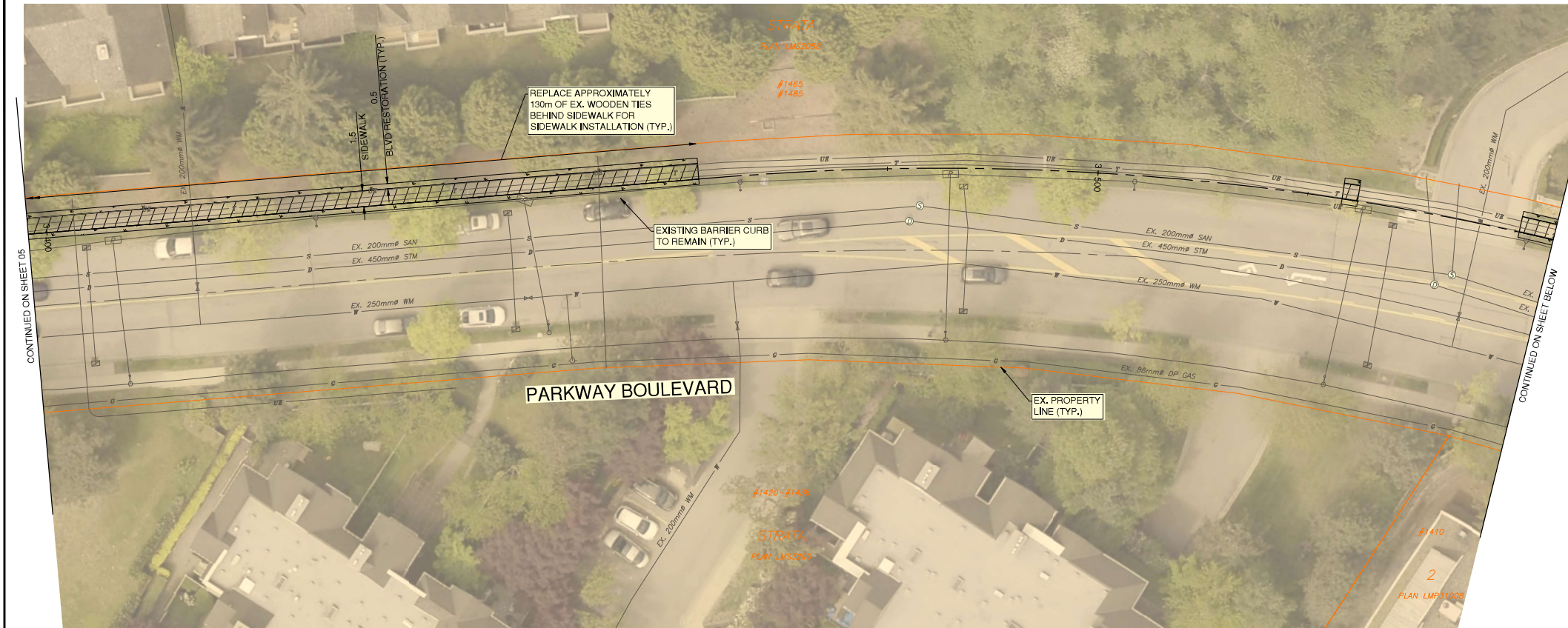
3000 Guildford Way, Coquitlam, B.C., V3B 7N2

Scale horiz.	1:250	Scale vert.	N/A
Sheet	05	of	08
Eng. Project No.	2111-06671-00		

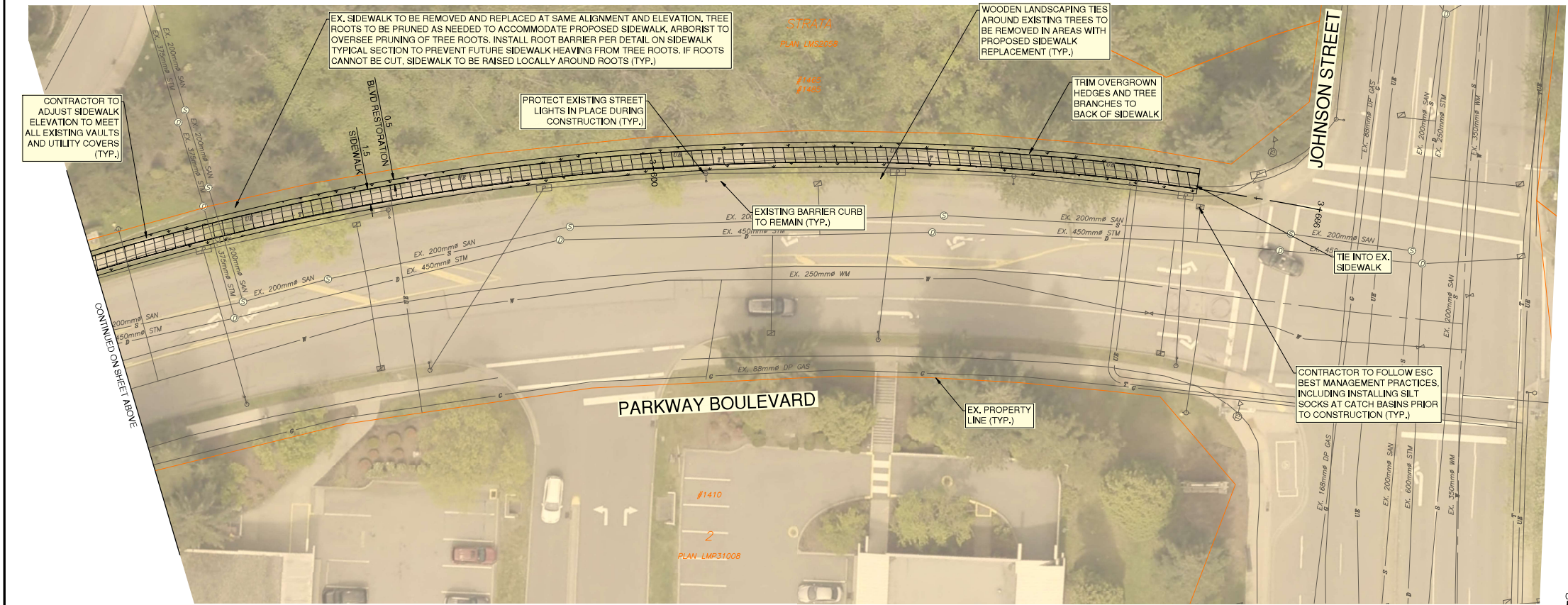
Project **2026 SIDEWALK REHABILITATION PANORAMA DR. AND PARKWAY BLVD. ROADWORKS**

Description **PARKWAY BOULEVARD - STA. 3+110 TO STA. 3+405**

File: 06671-C0-100



PARKWAY BOULEVARD - NORTH SIDEWALK
TYPICAL SECTION
SCALE: 1:100



LEGEND	
	CONCRETE DRIVEWAY - 190mm CONCRETE w/ 100mm GRANULAR BASE
	CONCRETE SIDEWALK - 100mm THICK CONCRETE THICKENED TO 190mm THROUGH DRIVEWAYS AND RAMP PER COQ-C7, COQ-C7B
	BOULEVARD - 150mm TOPSOIL AND SOD

THIS DRAWING AND DESIGN IS THE PROPERTY OF McELHANNY AND SHALL NOT BE USED, REUSED OR REPRODUCED WITHOUT THE CONSENT OF McELHANNY. McELHANNY WILL NOT BE HELD RESPONSIBLE FOR THE IMPROPER OR UNAUTHORIZED USE OF THIS DRAWING AND DESIGN.

THIS DRAWING AND DESIGN HAS BEEN PREPARED FOR THE CLIENT IDENTIFIED. TO MEET THE STANDARDS AND REQUIREMENTS OF THE APPLICABLE PUBLIC AGENCIES AT THE TIME OF PREPARATION. McELHANNY, ITS EMPLOYEES, SUBCONSULTANTS AND AGENTS WILL NOT BE LIABLE FOR ANY LOSSES OR OTHER CONSEQUENCES RESULTING FROM THE USE OR RELIANCE UPON, OR ANY CHANGES MADE TO, THIS DRAWING, BY ANY THIRD PARTY, INCLUDING CONTRACTORS, SUPPLIERS, CONSULTANTS AND STAKEHOLDERS, OR THEIR EMPLOYEES OR AGENTS, WITHOUT McELHANNY'S PRIOR WRITTEN CONSENT.

INFORMATION ON EXISTING UNDERGROUND FACILITIES MAY NOT BE COMPLETE OR ACCURATE. McELHANNY, ITS EMPLOYEES AND DIRECTORS ARE NOT RESPONSIBLE NOR LIABLE FOR THE LOCATION OF ANY UNDERGROUND CONDUITS, PIPES, CABLES OR OTHER FACILITIES WHETHER SHOWN OR OMITTED FROM THIS PLAN. PRIOR TO CONSTRUCTION CONTRACTOR SHALL EXPOSE LOCATIONS OF ALL EXISTING FACILITIES BY HAND DIGGING OR HYDROVAC AND ADVISE THE ENGINEER OF POTENTIAL CONFLICTS.

Edge of pavement	Hydrant	Sanitary service	Hydro Guy Wire
Watermain and valve	Water air valve	Sanitary cleanout	Hydro Kiosk
Drainage sewer, MH	Water blowoff	Utility pole (joint pole)	Vegetation Conifer
Drainage ditch	Water service	Utility pole with light	Vegetation Deciduous
Sanitary sewer, MH	Catch basin, top inlet	Streetlight, davit	Vegetation Shrub
Sanitary forcemain	Catch basin, side inlet	Streetlight, post top	Survey Traverse Hub
Gasmain and valve	Catch basin, round	Comb signal pole	Survey Iron Pin
Hydro duct, MH	Drainage service	Traffic signal pole	Survey Lead Plug
Telephone duct, MH	Drainage cleanout	Junction box	Survey Monument

No.	Date	By	Revisions	Eng.
C	2026-01-23	JK	1ST DESIGN SUBMISSION	AG
B	2026-01-07	JK	DETAILED DESIGN SUBMISSION	AG
A	2025-10-20	JK	PRELIMINARY DESIGN SUBMISSION	AG

Design by JK Date October 29, 2025
Drawn by MWJ Date October 29, 2025
Checked by MH Date October 29, 2025
Approved by AG Date October 29, 2025

McElhanny

PERMIT TO PRACTICE
McElhanny Inc.
A.F. J. GONZALEZ
#4624

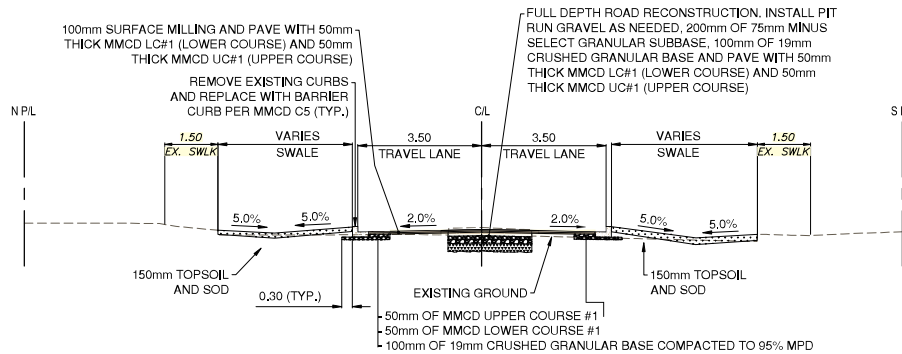


Coquitlam

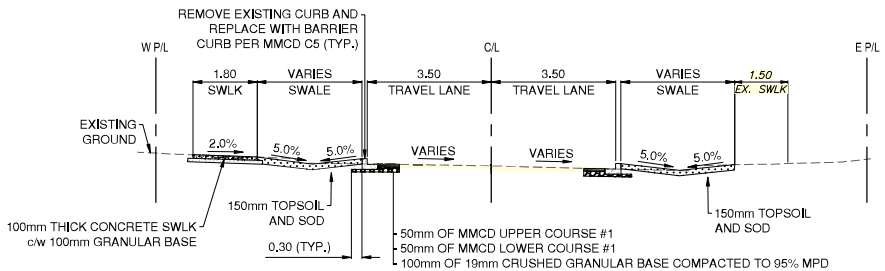
Engineering & Public Works
3000 Guildford Way, Coquitlam, B.C., V3B 7N2

Scale horiz. 1:250 Scale vert. N/A
Sheet 06 of 08
Eng. Project No. 2111-06671-00

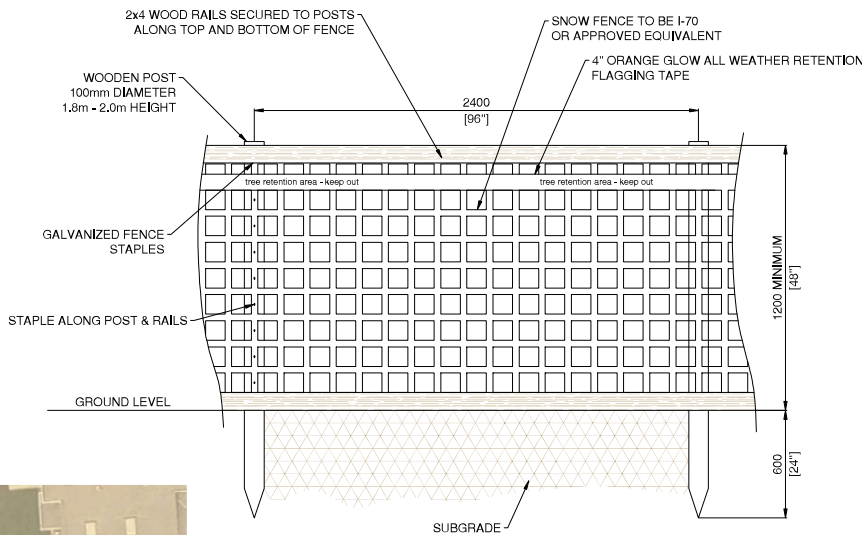
Project 2026 SIDEWALK REHABILITATION
PANORAMA DR. AND PARKWAY BLVD.
ROADWORKS
PARKWAY BOULEVARD - STA. 3+405 TO STA. 3+660
File: 06671-C0-100



PANORAMA DRIVE
TYPICAL SECTION
SCALE: 1:100

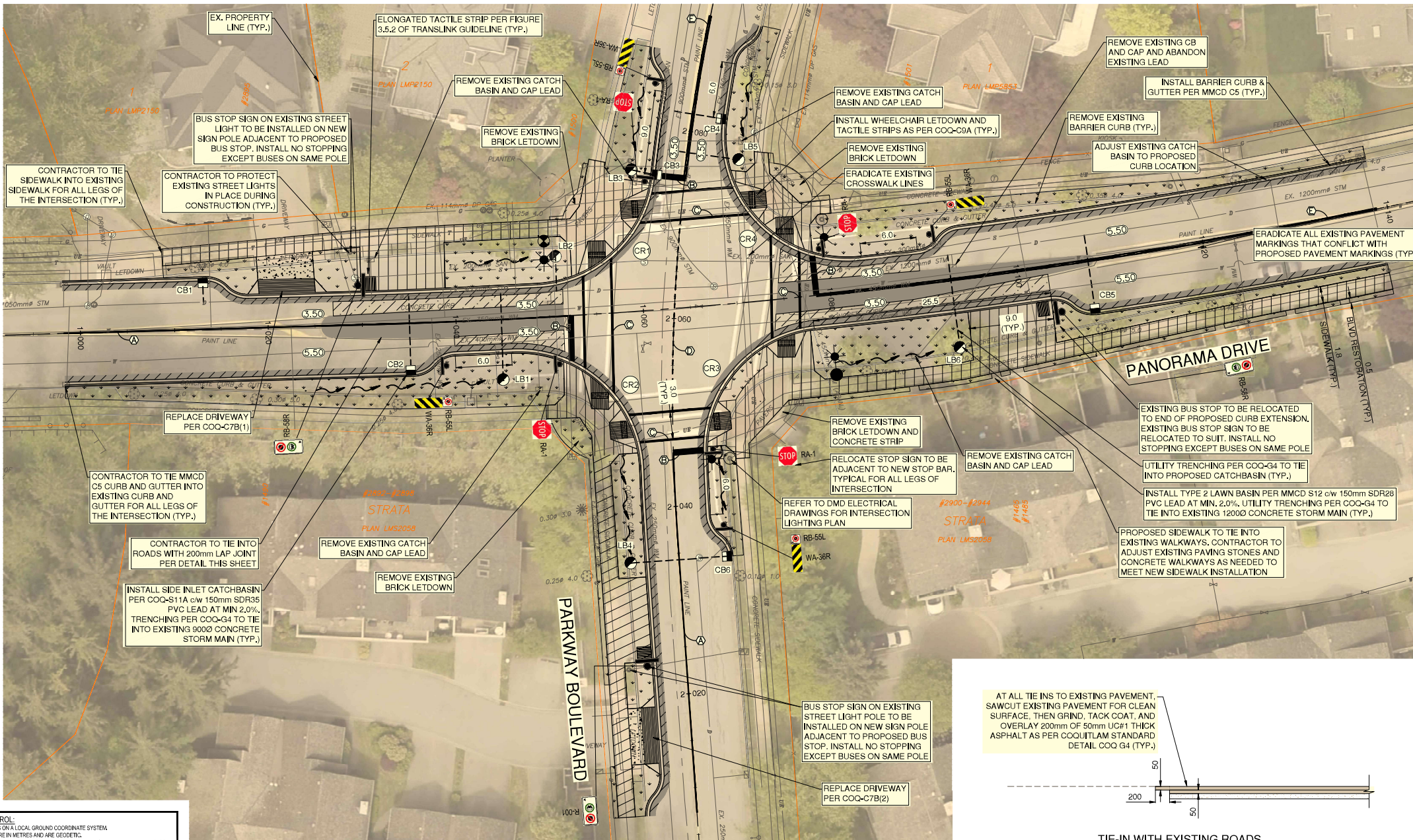


PARKWAY BOULEVARD
TYPICAL SECTION
SCALE: 1:100



PROTECTION FENCE TO BE LOCATED AT CROWN DRIPLINE OR ADJACENT TO HARD SURFACE, WHICHEVER IS GREATER.
MANUALLY EXCAVATE AND CUT TREE ROOTS WITHIN 1.0m OF TREE PROTECTION FENCE.
MACHINERY AND STORAGE IS NOT PERMITTED WITHIN 1.0m OF TREE PROTECTION AREA.

TREE PROTECTION FENCING
SCALE: NTS



- KEY NOTES
- 100mm YELLOW SOLID LINE
 - 600mm WHITE STOP BAR
 - 200mm WHITE CROSSWALK LINE
 - 100mm YELLOW BROKEN GUIDE LINE (0.5,0.5,0.5)
 - 100mm DOUBLE SOLID YELLOW LINE

CATCH BASIN TABLE				
NAME	TYPE	STATION OFFSET	GRATE ELEV	COORDINATES
CB1	COQ-S11A	1+013.181 -5.500	202.295	N 5462839.906 E 514024.500
CB2	COQ-S11A	1+035.034 5.500	201.762	N 5462829.548 E 514046.684
CB3	COQ-S11A	2+075.014 -3.500	201.618	N 5462850.910 E 514072.350
CB4	COQ-S11A	2+081.840 3.500	201.700	N 5462856.770 E 514080.176
CB5	COQ-S11A	1+107.587 5.500	200.422	N 5462836.288 E 514119.533
CB6	COQ-S11A	2+034.416 5.500	200.433	N 5462810.371 E 514080.707
LB1	MMCD S12 TYPE 2	1+044.725 6.410	201.700	N 5462829.041 E 514056.499
LB2	MMCD S12 TYPE 2	1+050.987 -6.402	201.800	N 5462842.172 E 514062.058
LB3	MMCD S12 TYPE 2	2+075.238 -5.750	201.810	N 5462851.394 E 514070.140
LB4	MMCD S12 TYPE 2	2+034.313 -5.159	200.776	N 5462809.520 E 514070.081
LB5	MMCD S12 TYPE 2	2+077.679 5.463	201.661	N 5462852.471 E 514081.566
LB6	MMCD S12 TYPE 2	1+092.930 7.278	200.750	N 5462832.470 E 514105.115

LEGEND

- ASPHALT OVERLAY
- FULL DEPTH ROAD CONSTRUCTION
- CURB SLOT PARTIAL DEPTH CONSTRUCTION
- CONCRETE DRIVEWAY - 190mm CONCRETE w/ 100mm GRANULAR BASE
- CONCRETE SIDEWALK - 100mm THICK CONCRETE THICKENED TO 190mm THROUGH DRIVEWAYS AND RAMP PER COQ-C7, COQ-C7B
- BOULEVARD - 150mm TOPSOIL AND SOD

THIS DRAWING AND DESIGN IS THE PROPERTY OF McELHANNY AND SHALL NOT BE USED, REPRODUCED OR REPRODUCED WITHOUT THE CONSENT OF McELHANNY. McELHANNY WILL NOT BE HELD RESPONSIBLE FOR THE IMPROPER OR UNAUTHORIZED USE OF THIS DRAWING AND DESIGN.

THIS DRAWING AND DESIGN HAS BEEN PREPARED FOR THE CLIENT IDENTIFIED. TO MEET THE STANDARDS AND REQUIREMENTS OF THE APPLICABLE PUBLIC AGENCIES AT THE TIME OF PREPARATION. McELHANNY, ITS EMPLOYEES, SUBCONSULTANTS AND AGENTS WILL NOT BE LIABLE FOR ANY LOSSES OR OTHER CONSEQUENCES RESULTING FROM THE USE OR RELIANCE UPON, OR ANY CHANGES MADE TO, THIS DRAWING, BY ANY THIRD PARTY, INCLUDING CONTRACTORS, SUPPLIERS, CONSULTANTS AND SPONSORING, OR THEIR EMPLOYEES OR AGENTS, WITHOUT McELHANNY'S PRIOR WRITTEN CONSENT.

INFORMATION ON EXISTING UNDERGROUND FACILITIES MAY NOT BE COMPLETE OR ACCURATE. McELHANNY, ITS EMPLOYEES AND DIRECTORS ARE NOT RESPONSIBLE NOR LIABLE FOR THE LOCATION OF ANY UNDERGROUND CONDUITS, PIPES, CABLES OR OTHER FACILITIES WHETHER SHOWN OR OMITTED FROM THIS PLAN. PRIOR TO CONSTRUCTION CONTRACTOR SHALL EXPOSE LOCATIONS OF ALL EXISTING FACILITIES BY HAND DIGGING OR HYDROVAC AND ADVISE THE ENGINEER OF POTENTIAL CONFLICTS.

- SURVEY CONTROL:
- THE SURVEY IS ON A LOCAL GROUND COORDINATE SYSTEM.
 - ELEVATIONS ARE IN METRES AND ARE GEODETIC.
 - ELEVATIONS ARE DERIVED FROM CGRS83/1983 DATUM = 190.528m DATUM IS CGVD 28 (GVD 2018).
 - TO CONVERT TO UTM 22N19 NAD83(CRS) 4 QUAD, UTM, MULTIPLY BY THE COMBINED FACTOR OF 0.999961 ABOUT 0.0.

Edge of pavement	Hydrant	Sanitary service	Hydro Guy Wire
Watermain and valve	Water air valve	Sanitary cleanout	Hydro Kiosk
Drainage sewer, MH	Water blowoff	Utility pole (joint pole)	Vegetation Conifer
Drainage ditch	Water service	Utility pole with light	Vegetation Deciduous
Sanitary sewer, MH	Catch basin, top inlet	Streetlight, davit	Vegetation Shrub
Sanitary forcemain	Catch basin, side inlet	Streetlight, post top	Survey Traverse Hub
Gasmain and valve	Catch basin, round	Comb signal pole	Survey Iron Pin
Hydro duct, MH	Drainage service	Traffic signal pole	Survey Lead Plug
Telephone duct, MH	Drainage cleanout	Junction box	Survey Monument

No.	Date	By	Revisions	Eng.
C	2026-01-23	JK	1ST DESIGN SUBMISSION	AG
B	2026-01-07	JK	DETAILED DESIGN SUBMISSION	AG
A	2025-10-29	JK	PRELIMINARY DESIGN SUBMISSION	AG

Design by Date
October 29, 2025

Drawn by Date
October 29, 2025

Checked by Date
October 29, 2025

Approved by Date
October 29, 2025

McElhanny
Engineering & Public Works



Coquitlam
Engineering & Public Works
3000 Guildford Way, Coquitlam, B.C., V3B 7N2

Scale
horiz. 1:250
vert. N/A

Sheet 07 of 08

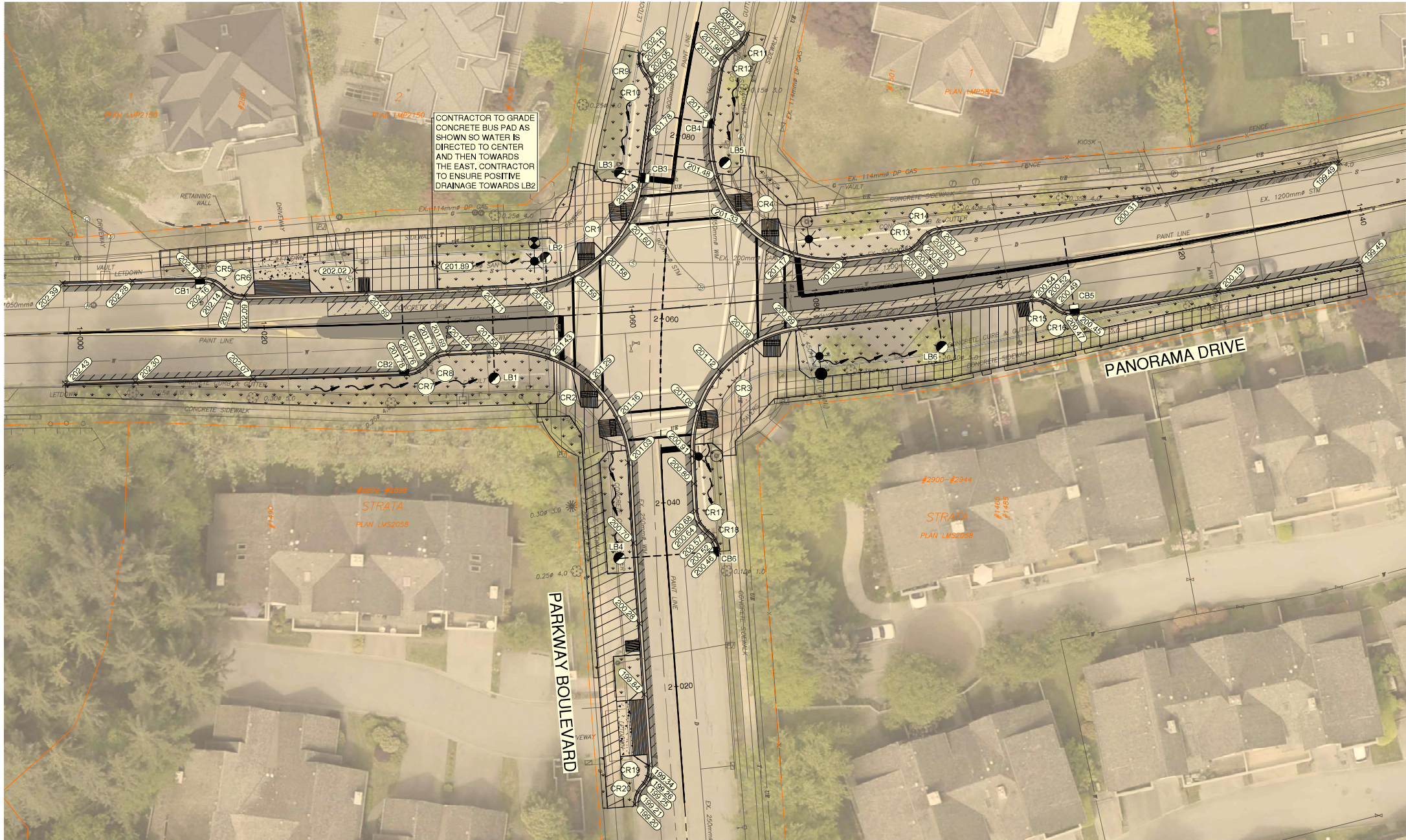
Eng. Project No. 2111-06671-00

Project
2026 SIDEWALK REHABILITATION
PANORAMA DR. AND PARKWAY BLVD.
ROADWORKS

Description
PANORAMA DRIVE AND PARKWAY BOULEVARD INTERSECTION

File: 06671-C0-100

- NOTES:
- ELEVATIONS BASED ON SURVEY AS REFERENCE. CONTRACTOR TO INSTALL CURB BULGE BASED ON FIELD EX. CURB ELEVATIONS AND MAINTAINING DRAINAGE FROM ROAD CROWN TO CURB GUTTERLINE (TYP.)
 - CONTRACTOR TO ENSURE MIN. 0.5% GRADES TOWARDS CATCHBASINS ALONG CURB BULGES SUITED TO TIE IN WITH EXISTING PAVEMENT.



CURB RETURN TABLE							
CURB No.	LENGTH	RADIUS	DELTA	TANGENT	B.C. COORD.	E.C. COORD.	
CR1	18.235	13,000	80°22'07"	10,980	N 5462839.154 E 514080.130	N 5462850.677 E 514072.324	
CR2	20.595	13,000	90°46'19"	13,176	N 5462819.507 E 514071.154	N 5462832.004 E 514057.503	
CR3	19.474	13,000	85°49'50"	12,087	N 5462834.494 E 514089.757	N 5462821.167 E 514078.102	
CR4	23.797	13,000	104°52'47"	16,905	N 5462856.874 E 514080.191	N 5462842.048 E 514094.509	
CR5	2.523	3,000	48°11'23"	1,342	N 5462838.919 E 514027.066	N 5462839.855 E 514024.802	
CR6	2.523	3,000	48°11'23"	1,342	N 5462838.919 E 514027.066	N 5462837.984 E 514029.329	
CR7	2.534	3,000	48°23'49"	1,348	N 5462829.558 E 514046.984	N 5462830.641 E 514049.192	
CR8	2.512	3,000	47°58'59"	1,335	N 5462831.723 E 514051.379	N 5462830.641 E 514049.192	
CR9	2.519	3,000	48°06'43"	1,339	N 5462864.446 E 514072.305	N 5462862.080 E 514072.925	
CR10	2.496	3,000	47°40'27"	1,325	N 5462859.737 E 514073.548	N 5462862.080 E 514072.925	
CR11	2.386	3,000	45°34'40"	1,260	N 5462864.747 E 514082.560	N 5462866.617 E 514083.940	
CR12	2.570	3,000	49°05'32"	1,370	N 5462864.747 E 514082.560	N 5462862.697 E 514081.143	
CR13	2.584	3,000	49°20'42"	1,378	N 5462842.735 E 514100.596	N 5462844.030 E 514102.740	
CR14	2.532	3,000	48°21'25"	1,347	N 5462845.318 E 514104.833	N 5462844.030 E 514102.740	
CR15	2.560	3,000	48°53'20"	1,364	N 5462836.863 E 514117.182	N 5462837.607 E 514114.813	
CR16	2.560	3,000	48°53'11"	1,364	N 5462836.863 E 514117.182	N 5462836.119 E 514119.551	
CR17	2.606	3,000	49°45'54"	1,391	N 5462814.647 E 514078.406	N 5462812.428 E 514078.610	
CR18	2.545	3,000	48°36'07"	1,355	N 5462812.428 E 514079.610	N 5462810.270 E 514080.810	
CR19	2.405	3,000	45°55'31"	1,271	N 5462784.810 E 514072.560	N 5462787.024 E 514073.320	
CR20	2.407	3,000	45°58'43"	1,273	N 5462782.593 E 514071.801	N 5462784.810 E 514072.560	

LEGEND	
	ASPHALT OVERLAY
	FULL DEPTH ROAD CONSTRUCTION
	CURB SLOT PARTIAL DEPTH CONSTRUCTION
	CONCRETE DRIVEWAY - 190mm CONCRETE w/ 100mm GRANULAR BASE
	CONCRETE SIDEWALK - 100mm THICK CONCRETE, THICKENED TO 190mm THROUGH DRIVEWAYS AND RAMP PER COQ-C7, COQ-C7B
	BOULEVARD - 150mm TOPSOIL AND SOD

- SURVEY CONTROL:
- THE SURVEY IS ON A LOCAL GROUND COORDINATE SYSTEM.
 - ELEVATIONS ARE IN METRES AND ARE GEODETIC.
 - ELEVATIONS ARE DERIVED FROM CGM 88(94) DATUM + 100.528m DATUM IS (CGVD 28 (GVD 2018))
 - TO CONVERT TO UTM Zone 18N NAD83(CRS) UTM, MULTIPLY BY THE COMBINED FACTOR OF 0.9999614 ABOUT 0.0.

THIS DRAWING AND DESIGN IS THE PROPERTY OF MELHANNY AND SHALL NOT BE USED, REPRODUCED OR REPRODUCED WITHOUT THE CONSENT OF MELHANNY. MELHANNY WILL NOT BE HELD RESPONSIBLE FOR THE IMPROPER OR UNAUTHORIZED USE OF THIS DRAWING AND DESIGN.

THIS DRAWING AND DESIGN HAS BEEN PREPARED FOR THE CLIENT IDENTIFIED. TO MEET THE STANDARDS AND REQUIREMENTS OF THE APPLICABLE PUBLIC AGENCIES AT THE TIME OF PREPARATION. MELHANNY, ITS EMPLOYEES, SUBCONSULTANTS AND AGENTS WILL NOT BE LIABLE FOR ANY LOSSES OR OTHER CONSEQUENCES RESULTING FROM THE USE OR RELIANCE UPON, OR ANY CHANGES MADE TO, THIS DRAWING, BY ANY THIRD PARTY, INCLUDING CONTRACTORS, SUPPLIERS, CONSULTANTS AND STAKEHOLDERS, OR THEIR EMPLOYEES OR AGENTS, WITHOUT MELHANNY'S PRIOR WRITTEN CONSENT.

INFORMATION ON EXISTING UNDERGROUND FACILITIES MAY NOT BE COMPLETE OR ACCURATE. MELHANNY, ITS EMPLOYEES AND DIRECTORS ARE NOT RESPONSIBLE NOR LIABLE FOR THE LOCATION OF ANY UNDERGROUND CONDUITS, PIPES, CABLES OR OTHER FACILITIES WHETHER SHOWN OR OMITTED FROM THIS PLAN. PRIOR TO CONSTRUCTION CONTRACTOR SHALL EXPOSE LOCATIONS OF ALL EXISTING FACILITIES BY HAND DIGGING OR HYDROVAC AND ADVISE THE ENGINEER OF POTENTIAL CONFLICTS.



0 1:250 10

Edge of pavement	Hydrant	Sanitary service	Hydro Guy Wire
Watermain and valve	Water air valve	Sanitary cleanout	Hydro Kiosk
Drainage sewer, MH	Water blowoff	Utility pole (joint pole)	Vegetation Conifer
Drainage ditch	Water service	Utility pole with light	Vegetation Deciduous
Sanitary sewer, MH	Catch basin, top inlet	Streetlight, davit	Vegetation Shrub
Sanitary forcemain	Catch basin, side inlet	Streetlight, post top	Survey Traverse Hub
Gasmain and valve	Catch basin, round	Comb signal pole	Survey iron Pin
Hydro duct, MH	Drainage service	Traffic signal pole	Survey Lead Plug
Telephone duct, MH	Drainage cleanout	Junction box	Survey Monument

No.	Date	By	Revisions	Eng.
C	2026-01-23	JK	IFT DESIGN SUBMISSION	AG

Design by Date
October 28, 2025
Drawn by Date
October 28, 2025
Checked by Date
October 28, 2025
Approved by Date
October 28, 2025



Coquitlam
Engineering & Public Works
3000 Guildford Way, Coquitlam, B.C., V3B 7N2

Scale
horiz. 1:250
vert. N/A
Sheet 08 of 08
Eng. Project No. 2111-06671-00

Project
**2026 SIDEWALK REHABILITATION
PANORAMA DR. AND PARKWAY BLVD.
ROADWORKS - SPOT ELEVATIONS**
Description
PANORAMA DRIVE AND PARKWAY BOULEVARD INTERSECTION
File: 06671-C0-150

STREET LIGHTING NOTES

1. UNLESS OTHERWISE INDICATED, ALL WORK SHALL BE DONE IN ACCORDANCE WITH THE CITY OF COQUITLAM CURRENT SUBDIVISION CONTROL BYLAWS, CITY OF COQUITLAM SUPPLEMENTARY SPECIFICATIONS AND DETAILED DRAWINGS, CITY OF COQUITLAM APPROVED MATERIALS AND PRODUCTS LISTINGS, AND 2019 MMCD PLATINUM EDITION (OR NEWER VERSION).
2. THE CITY OF COQUITLAM HAS DISTINCT AREAS, SUCH AS AUSTIN HEIGHTS STREETSAPES STANDARDS, BURQUITLAM--LOUGHEED NEIGHBOURHOOD PLAN, MAILLARDVILLE, ETC. THESE DESIGNS MAY HAVE AREA DESIGN REQUIREMENTS WHICH MAY EXCEED NOTE 1 ABOVE.
3. THE DESIGN ENGINEERS AND CONTRACTORS SHALL REFER TO COQUITLAM RECORD DRAWINGS, FOR ALL CITY OF COQUITLAM UTILITIES AND INFRASTRUCTURE, SERVICE LOCATIONS AND DETAILS, THE EXACT LOCATION OF THESE UTILITIES SHALL BE CONFIRMED ON SITE BY THE CIVIL OR ELECTRICAL CONTRACTORS, AND WITH CITY OF COQUITLAM INSPECTORS. THESE UTILITIES DO NOT INCLUDE FORTIS, BC HYDRO, SHAW OR TELUS INFRASTRUCTURES.
4. BEFORE CALL BEFORE YOU DIG, THE LOCATIONS OF EXISTING UNDERGROUND UTILITIES (FORTIS, BC HYDRO, SHAW AND TELUS) ARE SHOWN IN AN APPROXIMATIONS ONLY, AND HAVE NOT BEEN INDEPENDENTLY VERIFIED BY THE OWNERS OR ITS REPRESENTATIVES. THE CONTRACTOR SHALL DETERMINE THE EXACT LOCATION OF ALL EXISTING UTILITIES, INCLUDING CITY OF COQUITLAM INFRASTRUCTURE PRIOR TO COMMENCING WORK. THE CONTRACTOR SHALL AGREE TO BE FULLY RESPONSIBLE FOR ANY AND ALL DAMAGES WHICH MAY OCCUR DUE TO THE CONTRACTOR'S FAILURE TO EXACTLY LOCATE AND PRESERVE ALL UNDERGROUND UTILITIES.
5. PRIOR TO STREET LIGHT BASE INSTALLATIONS, THE CONTRACTOR SHALL ENSURE THAT ALL STREET LIGHT POLES, FIXTURES AND RELATED EQUIPMENT MEETS OR EXCEEDS BC HYDRO CLEARANCE STANDARDS FOR ABOVE AND BELOW GROUND INFRASTRUCTURES, TELUS OR SHAW, AND WORKSAFEBC CLEARANCE REQUIREMENTS FOR ALL OVERHEAD PRIMARY AND SECONDARY (120/240V) CONDUCTORS. CONTRACTOR IS RESPONSIBLE TO REPORT ANY CONFLICTS OR DISCREPANCIES TO THE DESIGN ENGINEERS AND CITY OF COQUITLAM.
6. THE CONTRACTOR SHALL NOTIFY PROVINCIAL AND CITY OF COQUITLAM INSPECTORS 24 HOURS PRIOR TO COMMENCEMENT OF UNDERGROUND ELECTRICAL WORK.
7. THE CIVIL/ELECTRICAL CONTRACTOR SHALL OBTAIN PERMITS FROM THE CITY OF COQUITLAM, AND FROM TECHNICAL SAFETY BC (WAS BC SAFETY AUTHORITY).
8. THE TECHNICAL SAFETY BC (WAS BC SAFETY AUTHORITY) SHALL BE MADE AWARE OF THE (POSSIBLE) USE OF AN IRRIGATION SYSTEM WITHIN THE STREET LIGHT POLES. IRRIGATION POWER SHALL BE POWERED FROM METERED CIRCUITS.
9. ALL STREET LIGHT WIRING SHALL BE DESIGNED AND BUILT IN ACCORDANCE WITH CSA, CANADIAN ELECTRICAL CODE, PROVINCE OF BRITISH COLUMBIA AMENDMENTS AND ALL BULLETINS ISSUED BY TECHNICAL SAFETY BC (WAS BC SAFETY AUTHORITY), INCLUDING THE PROVINCIAL ELECTRICAL INSPECTION AMENDMENTS.
10. HYDRO SERVICE DIP CONNECTIONS SHALL BE PER BC HYDRO STANDARDS OR PER MMCD 2009. NOTE: HYDRO DIP SERVICES MUST USE A STEEL GUARD OVER RPVC CONDUITS. THE USE OF RIGID CONDUIT AND/OR RPVC TO RIGID CONDUIT FITTINGS IS NO LONGER PERMITTED.
11. MINIMUM DEPTH FOR UNDERGROUND CONDUIT DUCTING SHALL BE 600mm (MINIMUM) BELOW BOULEVARD AND SIDEWALKS, AND 900-MM (MINIMUM) BENEATH ASPHALT. PER CITY OF COQUITLAM SUBDIVISION AND DEVELOPMENT SERVICING BYLAWS.
12. CONCRETE STREET LIGHT / SERVICE BASES WITH MORE THAN 2 CONDUITS SHALL BE NOTED ON THE PLANS. AS AN EXAMPLE, "THIS BASE HAS (X) CONDUITS"
13. UNLESS OTHERWISE INDICATED, ALL CONDUCTORS SHALL BE TYPE RW90 (MINIMUM), STRANDED COPPER, INSULATED, AND COLOUR CODED PER DRAWINGS.
14. UNLESS OTHERWISE INDICATED, ALL HARDWARE SHALL BE STAINLESS STEEL.
15. NEW STREET LIGHTING DESIGNS SHALL ONLY BE 120/240V.
16. UNLESS OTHERWISE INDICATED: ALL POLES, ARMS, SERVICE BASES, HAND ACCESS COVERS, SECURITY COVERS, AND RE-ENFORCED STEEL BACKING BARS, SHALL BE GALVANIZED, PRIMED AND POWDER-COATED.
- a. CITY OF COQUITLAM HAS MULTIPLE COLOURS: RAL6028 GREEN, RAL7024 GRAPHITE GREY, RAL8014 BROWN, RAL9005 BLACK, ETC. CONSULT THE PLANS FOR SPECIFIC COLOURS.
17. ALL STREET LIGHT HAND-HOLE COVERS SHALL BE PROVIDED WITH ROBUST REINFORCED SECURITY COVERS, REINFORCED U-SHAPED REINFORCED BACKER BARS AND REVERSE THREADED SECURITY BOLTS (FLOWER HEAD PREFERRED). TWO MANUFACTURERS OFFER TYPICAL SECURITY DEVICES:
- a. NOVA POLE AND WEST COAST ENGINEERING OFFER A REINFORCED COVER, REVERSE THREADED SECURITY BOLT (FLOWER HEAD #2), AND ROBUST REVERSE THREADED BACKER BAR.
- b. THE ABOVE ITEMS DO NOT APPLY TO SPECIALTY POLES, SUCH AS PHILLIPS, LUMEC, QUATTRO, ETC. CONSULT THOSE COMPANIES FOR THEIR SECURITY MEASURES.
- c. THE ROUND BULLDOG LOCKS AND WIRE SENTRY PRODUCTS ARE NO LONGER APPROVED FOR USE IN CITY OF COQUITLAM
18. ALL THREADED BOLTS, NOT USED FOR ELECTRICAL CONNECTIONS, SHALL HAVE ANTI-SEIZE COMPOUND APPLIED. THIS ALSO APPLIES TO SECURITY BOLTS NOTED ABOVE.
19. UNLESS OTHERWISE INDICATED, ALL CONDUCTORS SHALL BE TYPE RW90, STRANDED COPPER, INSULATED, AND COLOURS PER STREET LIGHT PLANS.
20. PHOTO ELECTRIC CONTROL (PEC) SHALL ONLY BE SOLID-STATE DESIGN, WITH ELECTROMECHANICAL CONTACTS.
21. PEC CONDUCTORS SHALL BE #12 RW90, COLOURS: RED, BLACK AND WHITE. THE PEC CONDUCTORS SHALL BE A COMPLETE RUN, WITHOUT SPLICES, FROM THE PEC SOCKET, IN TO THE ELECTRICAL PANEL. BUNDLED SEPARATE OF THE STREET LIGHTING CONDUCTORS.
22. LUMINAIRES SHALL HAVE 7 PIN RECEPTACLES AND ADJUSTABLE / SELECTABLE DRIVERS.
23. LUMINAIRES SHALL BE WIRED WITH #12 RW90 CONDUCTORS. BLACK AND WHITE FOR 120V SERVICE. BLACK AND RED FOR 240V SERVICE. WIRING BUNDLED SEPARATE OF THE PEC CONDUCTORS.
24. LUMINAIRES ON BLACK CONDUCTOR ARE IDENTIFIED WITH A 'B' DESIGNATION NEXT TO THE LUMINAIRES.
25. LUMINAIRES ON RED CONDUCTOR ARE IDENTIFIED WITH AN 'R' DESIGNATION NEXT TO THE LUMINAIRES.
26. STREET LIGHTING AND PEC CONDUCTORS SHALL NOT BE SPLICED WITH WIRE NUTS IN THE POLE (HAND HOLE AND LUMINAIRE ACCEPTABLE).
27. EACH LUMINAIRE SHALL BE PROVIDED WITH A TRON HEB-AA FUSE-HOLDER C/W 2 L-TYPE INSULATING BOOTS, OR PRE-APPROVED EQUIVALENT. THE FUSE-HOLDER SHALL BE ACCESSIBLE IN THE HAND-HOLE COVER.
28. EACH FUSE HOLDER SHALL BE PROVIDED WITH ONE 10-AMPERE BUSS KTK OR MERSEN ATM TYPE FUSE (600V), WIRED IN THE LIVE CONDUCTOR(S). THE FUSE HOLDER SHALL BE ACCESSIBLE FROM THE HAND-HOLE ACCESS, OR JUNCTION BOX.
29. ALL LUMINAIRE FIXTURES SHALL BE BONDED WITH A NUMBER 12 RW90 GREEN CONDUCTOR. THIS CONDUCTOR SHALL TERMINATE INTO THE BONDING CONDUCTOR RUN AT THE BASE OF THE POLE.
30. THE BOND STUD OPENING SHALL BE AT THE REAR OF THE POLE AND SHALL NOT BE ON THE FLANGE OF THE ACCESS HOLE OPENING.
31. THE INTERIOR COLOUR-FINISHED SURFACE SURROUNDING THE BOND STUD SHALL BE GROUND OFF TO THE GALVANIZING OR BARE STEEL FOR THE ELECTRICAL BOND ADHERENCE. TO ENSURE A PROPER BOND AND REDUCE CORROSION OR RUSTING, THE BONDING STUD SHALL BE INSTALLED IMMEDIATELY AFTER THE GRINDING.
32. THE BONDING STUD IN EACH POLE SHALL COMPRISE OF ONE 3/8-16 BOLT 1.5-INCHES LONG, ONE SPLIT LOCK WASHER, AND TWO HEX NUTS. THE SPLIT LOCK-WASHER SHALL BE SLD ONTO THE BOLT ON THE INSIDE OF THE POLE, AND HELD TIGHTLY IN PLACE WITH THE FIRST NUT. THIS NUT SHALL BE TIGHTENED TO SPECIFICATION. THE RING TERMINAL SHALL BE SANDWICHED BETWEEN THE TWO HEX NUTS. THE LAST NUT HOLDS THE RING TERMINAL IN PLACE. ALL HARDWARE SHALL BE TIGHTENED TO SPECIFICATIONS.
33. ALL POLES SHALL BE BONDED WITH A No. 8 RW90 GREEN BONDING CONDUCTOR. THE CONTRACTOR SHALL SUPPLY A 4-WAY PIGTAIL SPLICE TO THE POLE BOND, AND WITH A RING LUG TERMINAL BENEATH THE BONDING HARDWARE.
34. ALL LARGE GAUGE CONDUCTORS (#8 OR LARGER) USING MULTIPLE CONDUCTOR SPLICES, WHICH MAY EXCEED THE LARGER WIRE NUT SIZES, SHALL UTILIZE SPLIT BOLT HARDWARE, DUCT SEALANT, AND WITH WEATHER-RESISTANT / WATER-PROOF CONNECTION MEANS. TO ENSURE WATER WILL RUN OFF THE CONNECTIONS, ALL CONNECTIONS SHALL BE ORIENTATED UPWARDS WITHIN EACH POLE OR JUNCTION BOX. THE STANDARD HOUSE-HOLD "WIRE NUT" IS NOT WATER-PROOF.
35. ALL LARGE GAUGE (#8 OR LARGER) CONDUCTORS, SPLICES AND CONNECTIONS, WITHIN JUNCTION BOXES OR HAND ACCESS OPENINGS, SHALL BE SEALED WITH TAPE CONSISTING OF BISHOP BI-SEAL PHILLIPS ROTRUNDRA OR 3M SELF HOLDING TAPE; COVERED WITH PVC TAPE AND DIPPED IN 3M SCOTCHCOAT, OR PRE-APPROVED EQUIVALENT.
36. WHERE POSSIBLE, JUNCTION BOXES SHALL BE AVOIDED. JUNCTION BOXES PROVIDE AN EASY ACCESS FOR WIRE THEFT. HOWEVER, IF JUNCTION BOXES ARE REQUIRED FOR 3 OR MORE CONDUITS/CONNECTIONS, CITY OF COQUITLAM HAS STANDARDIZED ON DUO-MOLD JUNCTION BOXES. PREFERRED SIZE IS 11X18X24, 2 SECTIONS DEEP (MINIMUM), WITH PEXTA BOLTS. OTHER SIZES MAY BE REQUIRED PER THE DESIGN PLANS.
37. JUNCTION BOXES IN SOFT BOULEVARD (GRASS, SOIL, ETC.), REQUIRES A 200mm WIDE BY 150mm DEEP CONCRETE SUPPORT RING, WITH REBAR. TO HELP SUPPORT AND PROTECT THE JUNCTION BOX FROM LAWN MOWERS, ETC.
38. JUNCTION BOXES SHALL BE PROVIDED WITH RPVC SUPPORT BARS TO SUPPORT THE ELECTRICAL CONNECTIONS AND FUSE HOLDERS (IF USED). THE RPVC BARS SHALL BE ATTACHED INTO THE JUNCTION BOX SIDEWALLS. THE ELECTRICAL CONNECTIONS AND FUSE-HOLDERS ALL CONNECTIONS SHALL BE ORIENTATED UPWARDS, AND TO BE HELD IN PLACE BY TIE-WRAPPS.
39. JUNCTION BOXES WITH METALLIC LIDS (NEW OR EXISTING) SHALL BE BONDED WITH A No. 8 RW90 BONDING CONDUCTOR WITH A SUITABLY SIZED RING LUG, AND WITH STAINLESS STEEL HARDWARE. THE CONTRACTOR SHALL SUPPLY A PIGTAIL SPLICE FROM THE INTERNAL BONDING CONDUCTORS TO THE METALLIC LID BOND.
40. FUSE HOLDERS IN HAND-HOLE ACCESS AND JUNCTION BOXES SHALL UTILIZE AN IDEAL INDUSTRIES OR BUCHANAN CONSTRUCTION PRODUCTS 65 KIT WATER-PROOF FUSE HOLDER, OR APPROVED EQUIVALENT. EACH FUSE-HOLDER SHALL BE PROVIDED WITH ONE 10-A BUSS KTK OR MERSEN ATM -TYPE FUSE, WIRED IN THE LIVE CONDUCTOR(S). FOR 240V SERVICES, ONE FUSE SHALL BE IN EACH LIVE CONDUCTOR.
41. WIRING AND FUSE-HOLDERS IN POLE HAND ACCESS AND/OR JUNCTION BOXES SHALL BE MARKED WITH YELLOW WATER-PROOF WIRE MARKER TAGS, AND ATTACHED USING TIE-WRAPPS. LABELING SHALL BE WITH A WATERPROOF SHARPIE INK PEN.
42. WIRING CONNECTIONS, SPLICES AND FUSE-HOLDERS IN JUNCTION BOXES SHALL BE KEPT OUT OF WATER.
43. ALL CONDUITS SHALL BE PROVIDED WITH A NYLON PULL LINE. CAPS SHALL HOLD THE NYLON CORD IN PLACE.
44. EMPTY CONDUITS / CONDUIT ONLY (CO) SHALL BE PROVIDED WITH NYLON PULL CORDS, KEPT IN PLACE WITH CAPPED ENDS (NOT GLUED).
45. WATER OR OTHER OBSTRUCTIONS ARE NOT PERMITTED IN CONDUITS. CONDUITS WITH WATER OR OTHER OBSTRUCTIONS SHALL BE BLOWN CLEAR.
46. STREET LIGHT BASE FLANGES SHALL BE LEVEL ON TWO HORIZONTAL AXIS.
47. STREET LIGHT BOLTS SHALL HAVE COLOUR-CODED NUT CAPS, TO MATCH THE POLES.
48. PER COQUITLAM SUBDIVISION BYLAWS, MINIMUM SPACING BETWEEN STREET LIGHTS AND:
- a. TREES SHALL BE 6-METERS (TO THE CANOPY)
- b. KIOSKS SHALL BE 3M
- c. DRIVEWAYS SHALL BE 2-METERS (EXCLUDING THE FLARE)
49. IT SHALL BE THE CONTRACTORS / DEVELOPERS RESPONSIBILITY TO SUBMIT THE ELECTRICAL PERMITS TO THE ASSIGNED COQUITLAM CIVIL/FIELD INSPECTOR.
50. COQUITLAM TRAFFIC OPERATIONS STAFF (OR ASSIGNED) MAY INSPECT THE INSTALLATIONS AND PROVIDE A DEFICIENCY LIST (AS NECESSARY). THE ELECTRICAL COMPANY SHALL PROVIDE THEIR ELECTRICAL PERMIT TO CITY OF COQUITLAM, TRAFFIC OPERATIONS STAFF, TO ISSUE AN ELECTRICAL CONNECTION REQUEST TO BC HYDRO.
51. DEVELOPERS ARE REQUIRED TO PAY A FLAT-RATE CHARGE TO CITY OF COQUITLAM FOR NEW BC HYDRO CONNECTION FEES. THIS DOES NOT APPLY WHERE NEW STREET LIGHTS ARE CONNECTED INTO EXISTING SERVICES.
52. JUNCTION BOXES (IF USED), TOPS SHALL BE LEVEL ON 2 AXIS.

CONCRETE BASE NOTES

1. THE CONCRETE BASES SHALL BE PER MMCD 2019 STANDARDS AND PLANS. PROVIDED WITH APPROPRIATE CONDUITS PER ENGINEERING REQUIREMENTS.
2. THE CONCRETE BASE SHALL NOT BE FORMED ONSITE, AND SHALL NOT BE FORMED BY THE ELECTRICAL CONTRACTOR. THE CONCRETE BASE SHALL BE PROVIDED FROM A PRECAST COMPANY, SUCH AS AE PRECAST, ARMTEC, LANGLEY CONCRETE, ETC.
3. CONCRETE BASE TOPS SHALL BE 5cm (~2.0-INCHES) ABOVE FINAL GRADE.
4. CONCRETE BASES AND JUNCTION BOXES (IF USED) TOPS SHALL BE LEVEL ON TWO HORIZONTAL AXIS.
5. STREETLIGHT BOLTS SHALL HAVE COLOUR-CODED NUT CAPS.
6. CONCRETE BASES FOR A SERVICE BASE:
- a. STREET LIGHTING: 40 AND 60-AMPERE PANELS, CONCRETE BASE WITH 5 OR MORE RPVC CONDUITS, PER CITY OF COQUITLAM SUPPLEMENTAL PLAN SS-E7.3 - UPPER DETAIL
- b. TRAFFIC SIGNAL: 100-AMPERE PANELS, CONCRETE BASE WITH ONE 35mm AND TWO 53mm RPVC CONDUITS, PER CITY OF COQUITLAM SUPPLEMENTAL PLAN SS-E7.3 - LOWER DETAIL
- c. PRIOR TO SERVICE BASE INSTALLATIONS, THE CONTRACTOR SHALL ENSURE THE CONCRETE BASE IS PROPERLY ORIENTATED SUCH THAT THE SERVICE CONDUIT (SC) IS ALIGNED TO THE PROTECTED AREA WITHIN THE ELECTRICAL PANEL WITHIN THE SERVICE BASE. REFER TO COQUITLAM SUPPLEMENTAL DRAWINGS SS-E7.3 AND E7.4.
- d. THE CONCRETE BASE SHALL BE INSTALLED TO ENSURE THE CONCRETE BASE IS PROPERLY ALIGNED FOR THE SERVICE BASE ACCESS DOOR. PER CITY OF COQUITLAM SUPPLEMENTAL PLAN SS-E7.3, THE SERVICE BASE ACCESS DOOR SHALL BE ON THE DOWNWARD SIDE OF TRAFFIC.
- e. WHEN THE CONCRETE BASE IS TO BE INSTALLED, OUR CITY OF COQUITLAM CIVIL INSPECTOR SHALL BE CONTACTED, WITH 24 HOURS ADVANCE NOTIFICATION TO ATTEND, TO CONFIRM COMPLIANCE TO CITY OF COQUITLAM REQUIREMENTS.
7. THE CIVIL AND/OR ELECTRICAL CONTRACTOR SHALL ENSURE STREET LIGHT POLES, FIXTURES AND RELATED EQUIPMENT MEETS OR EXCEEDS BC HYDRO AND WORKSAFEBC CLEARANCE REQUIREMENTS, FOR ALL OVERHEAD PRIMARY AND SECONDARY LINES. CONTRACTOR IS RESPONSIBLE TO REPORT ANY CONFLICTS OR DISCREPANCIES TO THE CITY OF COQUITLAM, AND TO THE DESIGN ENGINEERS.
8. CONCRETE BASES WITH MORE THAN 2 CONDUITS SHALL BE NOTED ON THE PLANS. AS AN EXAMPLE, "THIS BASE HAS (X) CONDUITS".
9. CONCRETE BASES SHALL BE PROVIDED WITH A V-GROOVE TO DISPERSE STANDING WATER. IF THE V-GROOVE IS NOT AVAILABLE, THEN ROUND FLAT STAINLESS STEEL WASHERS SHALL BE MOUNTED BETWEEN THE CONCRETE BASE AND THE BOTTOM OF THE SERVICE BASE. U-SHAPED SHIMS ARE NOT ACCEPTABLE.

SERVICE BASE / ELECTRICAL PANEL / EARTHING ELECTRODE

1. UNLESS OTHERWISE INDICATED, ALL WORK SHALL BE DONE IN ACCORDANCE WITH THE CITY OF COQUITLAM CURRENT SUBDIVISION CONTROL BYLAWS, CITY OF COQUITLAM SUPPLEMENTARY SPECIFICATIONS AND DETAILED DRAWINGS AND CITY OF COQUITLAM APPROVED MATERIALS AND PRODUCTS LISTINGS. MMCD 2019 MAY APPLY.
2. UNLESS OTHERWISE INDICATED, THE SERVICE BASE AND ACCESS COVERS ARE TO BE GALVANIZED, PRIMED AND POWDER-COATED IN COLOUR PER THE DESIGN PLANS.
- a. CITY OF COQUITLAM HAS SEVERAL COLOURS: RAL6028 GREEN, RAL9005 BLACK, RAL8014 BROWN, ETC. CONSULT THE PLANS FOR SPECIFIC COLOURS.
3. THE SERVICE BASE ACCESS DOOR SHALL BE DOWNSTREAM OF TRAFFIC.
4. THE SERVICE BASE SHALL BE MOUNTED ON A PREFORMED CONCRETE BASE:
- a. THE CONCRETE BASE SHALL NOT BE FORMED ONSITE OR CAST-IN-PLACE, AND SHALL NOT BE FORMED BY THE ELECTRICAL CONTRACTOR. THE CONCRETE BASE SHALL BE PROVIDED FROM A PRECAST COMPANY, SUCH AS AE PRECAST, ARMTEC, LANGLEY CONCRETE, ETC.
- b. THE CONCRETE BASE SHALL MEET OR EXCEED MMCD2009 SPECIFICATIONS, SECTION 34-41-13, SUBSECTION 3.3 CONCRETE BASES, PAGE 11 OF 16. PRIOR TO THE CONCRETE BASE INSTALLATION, A CERTIFICATE OF COMPLIANCE TO SUBSECTION 3.3.5 SHALL BE PROVIDED TO THE CIVIL INSPECTOR
- c. STREET LIGHTING CONCRETE BASES: 40 OR 60-AMPERE PANEL (SIZE DEPENDANT ON LOADING REQUIREMENTS), CONCRETE BASE WITH 5 OR MORE RPVC CONDUITS, PER CITY OF COQUITLAM SUPPLEMENTAL PLAN SS-E7.3, UPPER DETAIL
- d. TRAFFIC SIGNAL CONCRETE BASES: 100-AMPERE PANEL, CONCRETE BASE WITH ONE 35MM AND TWO 53MM RPVC CONDUITS, PER CITY OF COQUITLAM SUPPLEMENTAL PLAN SS-E7.3, LOWER DETAIL
5. THE LOCKING TAB ON THE SERVICE BASE PEDESTAL, SHALL BE OF A ROBUST DESIGN AND MANUFACTURE, AND SHALL ACCEPT A STANDARD CITY PADLOCK. A WCE BULLDOG PRODUCT SHALL NOT BE INSTALLED.
6. THE SERVICE BASE PEDESTAL SHALL BE PROVIDED WITH TWO 3/8-16 THREADED HOLES IN THE UPPER FLANGE AND WITH MATING CLEARANCE HOLES ON THE COVER. THESE HOLES SHALL BE AT THE TOP. ONE HOLE ON EITHER SIDE OF THE LOCKING TAB. THE CONTRACTOR SHALL PROVIDE 2 EACH 3/8-16 STAINLESS STEEL BOLTS, FLAT WASHERS AND ANTI-SEIZING COMPOUND. THE CITY MAY INSTALL SECURITY BOLTS.
7. ALL THREADED BOLTS, NOT USED FOR ELECTRICAL CONNECTIONS, SHALL BE STAINLESS STEEL AND HAVE ANTI-SEIZE COMPOUND APPLIED.
8. THE SERVICE BASE COVER SHALL NOT BE A SNUG FIT INTO THE SERVICE BASE OPENING. SOME LEeway SHALL BE PROVIDED TO FIT THE LOCKING TAB AND BOLTS THROUGH THE CLEARANCE OPENINGS.
9. THE SERVICE BASE SHALL BE PROVIDED WITH A BONDING TAB. THE COLOUR-FINISHED SURFACE SURROUNDING THE BOND TAB SHALL BE GROUND OFF TO GALVANIZING OR TO BARE STEEL FOR THE ELECTRICAL BOND ADHERENCE. TO ENSURE A PROPER BOND AND REDUCE CORROSION OR RUSTING, THE BONDING STUD SHALL BE INSTALLED IMMEDIATELY AFTER THE GRINDING.
10. UNLESS OTHERWISE INDICATED, ALL CONDUCTORS SHALL BE TYPE RW90 (MINIMUM), STRANDED COPPER, INSULATED, SIZED AND COLOUR CODED PER DRAWINGS.
11. THE ELECTRICIAN SHALL PROVIDE A No. 8 GAUGE RW90 BOND WITH A RING LUG FROM THIS TAB INTO THE ELECTRICAL PANEL ONTO THE BONDING BUSS. THE 3/8-16 BOLT SHALL CONSIST OF ONE 3/8-16 BOLT, SPLIT LOCK WASHER AND 2 HEX NUTS. THE RING TERMINAL IS SANDWICHED BETWEEN THE 2 NUTS. TIGHTEN TO SPECIFICATIONS
12. ELECTRICAL PANEL WITHIN THE SERVICE BASE SHALL BE:
- a. FABRICATED FROM STAINLESS STEEL OR ALUMINUM. THE PANEL SHALL BE SET STRAIGHT, AND PARALLEL TO INTERNAL SERVICE BASE SURFACES. ALL FOUR MOUNTING TABS SHALL BE BOLTED ON TO THE UNISTRUT RAILS WITHIN THE SERVICE BASE PEDESTAL.
- b. PROVIDED WITH A MAIN DISCONNECT, 2P-40A, 2P-60A, OR 2P-100A, 120/240V PER THE DESIGN PLANS. BRANCH BREAKERS ARE GENERALLY REQUIRED FOR THE 100-AMPERE PANELS.
- c. THE PHOTO-ELECTRIC CONTROL (PEC) CIRCUIT FUSING SHALL PER MMCD, USE A KTK10 (10-AMPERE) FUSE (600V), AND SUITABLE FRONT PANEL MOUNTED FUSE-HOLDER. PUSH-BUTTON CIRCUIT BREAKERS ARE NOT ACCEPTABLE.
- d. THE PEC FUSE-HOLDER AND FUSE SHALL BE MOUNTED ON THE FRONT PANEL, NEAR THE H-O-A OR O-H-A 3-POSITION ROTARY SWITCH. THIS APPLIES TO 40A, 60A AND 100A ELECTRICAL PANELS
- e. THE PEC BYPASS SWITCH SHALL BE A HEAVY-DUTY, 3-POSITION MAINTAINED, H-O-A OR O-H-A ROTARY SWITCH. TWO POSITION ROTARY SWITCH OR TOGGLE SWITCH, ARE NOT ACCEPTABLE
- f. THE FRONT PANEL PEC FUSE-HOLDER AND THE PEC BYPASS SWITCH SHALL BE PROVIDED WITH LABELS, DETAILS PER MMCD DRAWINGS
- g. PROVIDED WITH AN SPD (SURGE PROTECTION DEVICE), MOUNTED WITHIN THE ELECTRICAL PANEL, AND WITH FAULT PROTECTION (CIRCUIT BREAKERS, FUSING, ETC.). DETAILED SURGE PROTECTION DEVICE SPECIFICATIONS FOLLOW.
- h. PANEL SHALL BEAR ELECTRICALLY APPROVED LABELS FOR USE IN CANADA. SUCH AS CSA, ETL, CULUS, SPECIAL INSPECTIONS, ETC.
- i. FOR THE 40A AND 60A ELECTRICAL PANEL, REFER TO CITY OF COQUITLAM SUPPLEMENTAL DRAWING SS-E7.5
13. SURGE PROTECTION DEVICE SPECIFICATIONS:
- a. ELECTRICAL ACCREDITATIONS: CSA, ETL, CULUS, ETC.
- b. SYSTEM VOLTAGE AND FREQUENCY: 120/240V, 50/60 HERTZ
- c. MINIMUM DISCHARGE RATING: 20KA
- d. PROVIDED WITH LED STATUS INDICATORS, VISIBLE WHEN THE SERVICE BASE OR ELECTRICAL PANEL IS REMOVED. WITHOUT THE USE OF TOOLS.
- e. PREFERRED MANUFACTURERS: MERSEN AND SQUARE-D. ALL OTHERS SHALL BE PRE-APPROVED.
14. THE PEC CONDUCTORS SHALL BE #12 RW90, COLOURS: RED, BLACK AND WHITE. THE PEC CONDUCTORS SHALL BE A COMPLETE RUN, WITHOUT SPLICES, FROM THE PEC SOCKET TO THE ELECTRICAL PANEL. BUNDLED SEPARATE OF THE STREET LIGHTING CONDUCTORS.
15. THE CONTRACTOR SHALL ENSURE THE SERVICE BASE IS PROPERLY ORIENTATED SUCH THAT THE SERVICE CONDUIT (SC) IS ALIGNED TO THE PROTECTED AREA WITHIN THE ELECTRICAL PANEL.
16. STREET LIGHTS MOUNTED ON A SERVICE BASE SHALL BE WIRED PER MMCD DRAWINGS. LUMINAIRE CONDUCTORS SHALL BE GROUPED TOGETHER, AND SEPARATE OF THE PEC WIRING. GROUPING SHALL BE DONE WITH ELECTRICIANS TAPE.
17. GAPS OR OPENINGS BETWEEN THE STREET LIGHT POLE BASE FLANGES, THE OPENINGS FOR THE NUTS AND BOLTS, TO THE TOP OF THE SERVICE BASE, SHALL BE SEALED WITH RTV SEALANT.
18. STREET LIGHT MOUNTING NUTS SHALL HAVE COLOUR-CODED NUT CAPS, TO MATCH THE POLE COLOUR.
19. HYDRO SERVICE (DIP) CONNECTIONS SHALL BE PER BC HYDRO STANDARDS OR PER MMCD (CURRENT EDITION). NOTE: HYDRO DIP SERVICES SHALL USE A 3-METER STEEL GUARD OVER RPVC CONDUITS, LAG BOLTED TO THE WOOD POLE. THE USE OF RIGID CONDUIT AND/OR RPVC TO RIGID CONDUIT FITTINGS IS NOT PERMITTED.
20. THE ELECTRICAL CONTRACTOR SHALL PRE-TEST THE OPERATION OF THE ELECTRICAL PANEL WITHIN THE SERVICE BASE. THIS INCLUDES TESTING THE O-H-A/H-O-A SWITCH AND PEC FOR DAYTIME / NIGHTTIME SIMULATION. THE ELECTRICAL CONTRACTOR SHALL PROVIDE AN EMAIL TO TRAFFIC OPERATIONS STAFF TO ADVISE THE SERVICE BASE HAS BEEN DULY TESTED AND READY FOR CONNECTION.
21. THE EARTHING ELECTRODE SHALL BE SUPPLIED (TYPICALLY A PLATE) AND INSTALLED PER MMCD DRAWING E7.10:
- a. THE PLATE SHOULD BE IN NATURAL SOIL, NO ROCKS, NO SAND
- b. WIRED WITH A BARE #6 EARTHING CONDUCTOR. FROM THE ELECTRICAL PANEL PROTECTED AREA, TO THE PLATE ELECTRODE TAB, WITH AN ILSCO #BGC-1DB CLAMP, SUITABLE FOR DIRECT BURIAL IN EARTH.
- c. THE PLATE MINIMUM DEPTH OF 900mm BELOW GRADE AND 200mm FROM CONCRETE BASE(S).
- d. ELECTRICAL / CIVIL CONTRACTOR TO PROVIDE PICTURES SHOWING DIMENSIONS PER MMCD DRAWING E7.10. PICTURES TO BE SUPPLIED OR EMAILED TO CITY OF COQUITLAM CIVIL INSPECTORS, AND/OR TO TRAFFIC OPERATIONS SECTION STAFF.

LUMINAIRE FIXTURES

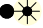

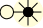


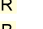
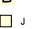
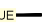


- CITY OF COQUITLAM USES MULTIPLE LED LUMINAIRE STYLES. SEVERAL LUMINAIRES ARE NOTED BELOW.
1. LUMINAIRE FIXTURES SHALL BEAR ELECTRICALLY APPROVED LABELS FOR USE IN CANADA. SUCH AS CSA, CEC, ULC, SPECIAL INSPECTIONS, ETC.
2. UNLESS OTHERWISE NOTED, LOCAL/RESIDENTIAL STREETS SHALL BE LED 3,000-DEGREES KELVIN, AND 4,000-DEGREES KELVIN FOR ALL OTHERS.

3. PER DESIGN REQUIREMENTS, LED LUMINAIRES MAY BE:
- a. AMERICAN ELECTRIC LED LUMINAIRE ATB-SERIES.
- b. LRL, NXT-SERIES
- c. LUMEC CAND1 OR CAND2 WITH LED FIXTURES
- d. LUMEC CAPELLA OR DOMUS SERIES LUMINAIRES
- e. LUMEC TR20 LED STYLE LUMINAIRES
- f. CREE, LITHONIA, LUMCA, ETC.
- g. LUMINAIRES TO HAVE SHATTER-PROOF POLYCARBONATE REFRACTORS
- h. OTHER MANUFACTURERS PER SPECIFICATIONS OR AS NOTED ON THE PLANS.
- i. LED FIXTURE COLOURS AND WATTAGES DETERMINED BY THE ENGINEER.
4. ALL LUMINAIRES SHALL BE LED.
5. MULTI-USE PATHWAY (MUP), SIDEWALKS AND WALKWAY LIGHTING SHALL BE LED, 4000-DEGREES KELVIN, PER CITY OF COQUITLAM APPROVED PRODUCTS LIST. LED WATTAGES, POLE STYLE AND HEIGHT, POLE COLOUR AND CONCRETE BASE PER DESIGN PLANS.
6. EACH ROADWAY & MULTIUSE PEDESTRIAN/MUP LIGHTING SHALL BE PROVIDED WITH A 7-CONTACT PEC SOCKET, PRE-INSTALLED BY THE LUMINAIRE MANUFACTURER (FUTURE SMART LIGHTING PROVISIONS). EACH LUMINAIRE SHALL BE PROVIDED WITH A 3-PIN TWIST LOCK SHORTING CAP (EXCEPT WHERE A PEC IS REQUIRED).
7. PEC CONDUCTORS SHALL BE #12 RW90. COLOURS: RED, BLACK AND WHITE. THE PEC CONDUCTORS SHALL BE A CONTINUOUS RUN, WITHOUT SPLICES, TO THE ELECTRICAL PANEL. BUNDLED SEPARATE FROM THE LUMINAIRE CONDUCTORS.
8. PHOTO ELECTRIC CONTROL (PEC) SHALL ONLY BE SOLID-STATE DESIGN, WITH ELECTROMECHANICAL CONTACTS. PEC AIMED IN A NORTHERN DIRECTION.
9. LED LUMINAIRE FIXTURES SHALL BE PROVIDED WITH AN LED WATTAGE/LUMEN LABEL (BLACK LETTERING ON WHITE BACKGROUND). LABEL SHALL BE VISIBLE FROM THE GROUND.

GROUND MOUNTED OR POLE-MOUNTED RECEPTACLES

1. UNLESS OTHERWISE INDICATED, ALL CONDUCTORS SHALL BE TYPE RW90, STRANDED COPPER, INSULATED, SIZED AND COLOUR CODED PER DRAWINGS.
2. DECORATIVE / SEASONAL RECEPTACLES SHALL BE:
- a. GROUND FAULT CIRCUIT INTERRUPTER (GFCI) DUPLEX RECEPTACLE. LEVITON OUTDOOR GRADE WEATHER-RESISTANT / TAMPER RESISTANT, 15A @ 125V, WITH LED INDICATOR. BEIGE, WHITE OR BLACK, OR PRE-APPROVED EQUIVALENT.
- b. MOUNTED WITHIN A NON-METALLIC FS-TYPE BOX (IF WITHIN 8-FEET OF GRADE)
- c. PROVIDED WITH SPRING LOADED COVER PLATES.
- d. APPLICATION IS DEPENDENT UPON DESIGN PLANS.
3. *** RECEPTACLES ATTACHED TO TREES SHALL BE AVOIDED ***
4. HOWEVER, IF TREE RECEPTACLES ARE MANDATORY, THEY SHALL BE PROVIDED WITH 50mm RPVC CONDUITS FROM THE JUNCTION BOX OR SERVICE BOX UP TO THE FINAL GRADE AT THE BASE OF THE TREE. THE 50mm RPVC CONDUIT SHALL BE LOOSELY ATTACHED TO A MOUNTING POINT (STEEL POST, SMALL BOLLARD, WOOD POST, ETC.). REFER TO CITY OF COQUITLAM SUPPLEMENTAL DRAWING SS-E7.20. THE STANDARD OF PROVIDING SURPLUS CABLE AROUND THE ROOT BALL IS NOT LONGER ACCEPTABLE.
5. EACH TREE RECEPTACLE BOX AND PROTECTIVE COVER SHALL BE METALLIC. EACH RECEPTACLE SHALL USE FLEXIBLE AND ROBUST TECK CABLES, PULLED THROUGH THE ABOVE NOTED RPVC CONDUIT. EACH TECK CABLE ENDS SHALL BE TERMINATED WITH TECK CONNECTORS IN THE RECEPTACLE FS BOXES AND JUNCTION BOXES. CONDUCTORS WITHIN TECK CABLES SHALL BE NUMBER 12 RW90, STRANDED COPPER, INSULATED, AND COLOUR CODED PER DRAWINGS.
6. EACH DECORATIVE / SEASONAL RECEPTACLE SHALL BE PROVIDED WITH AN IDEAL INDUSTRIES OR BUCHANAN CONSTRUCTION PRODUCTS '65 KIT WATER-PROOF FUSE-HOLDER, OR APPROVED EQUIVALENT. EACH FUSE-HOLDER SHALL BE PROVIDED WITH ONE 5-AMPERE BUSS KTK OR MERSEN ATM TYPE FUSE, WIRED IN THE LIVE CONDUCTOR.
7. ALL FUSE-HOLDER(S) SHALL BE ACCESSIBLE FROM THE POLE HAND-HOLE ACCESS OR IN NEARBY JUNCTION BOXES. ALL FUSE-HOLDERS SHALL BE MARKED WITH YELLOW WIRE MARKER TAGS, ATTACHED USING TIE-WRAPPS. LABELING SHALL BE WITH A WATERPROOF INK PEN.
8. POLE MOUNTED RECEPTACLES SHALL BE PROVIDED WITH AN EYE BOLT ABOVE THE RECEPTACLE, FOR ATTACHMENT OF SPAN SUPPORT CABLING. REFER TO CITY OF COQUITLAM SUPPLEMENTAL DRAWING #SS-E7.19.
9. IF ABOVE GROUND EXTENSION CORDS ARE REQUIRED, EACH CABLE SHALL BE SOOW CABTIRE, SUITABLE FOR OUTDOOR USE, UV-PROTECTED AND FOR WET LOCATIONS. EACH END SHALL BE ROBUST UV-STABILIZED MALE AND FEMALE CONNECTORS.
10. ABOVE GROUND SPANS SHALL BE STAINLESS STEEL AIRCRAFT CABLE AND CLAMPS, TO SUPPORT THE EXTENSION CORDS. THE EXTENSION CORDS SHALL BE ATTACHED TO THE SPAN CABLE WITH UV-STABILIZED TIE-WRAPPS.
11. RECEPTACLES ON BLACK PHASE CONDUCTOR ARE IDENTIFIED WITH A 'B' DESIGNATION NEXT TO THE RECEPTACLE.
12. RECEPTACLES ON RED PHASE CONDUCTOR ARE IDENTIFIED WITH AN 'R' DESIGNATION NEXT TO THE RECEPTACLE.

LEGEND

-  PROPOSED POST TOP STREETLIGHT POLE (4.5m - 80W LED TYPE 4AH DISTRIBUTION). REFER TO SHEET 2 FOR DETAILS
-  PROPOSED POST TOP STREETLIGHT POLE (6.0m - 80W LED TYPE 2ES DISTRIBUTION). REFER TO SHEET 2 FOR DETAILS
-  PROPOSED MODIFICATION TO POST TOP STREETLIGHT POLE (4.5m - NEW 80W LED TYPE 4AH DISTRIBUTION)
-  EXISTING POST TOP STREETLIGHT POLE (6.0m - WATTAGE AS NOTED, LED TYPE 2ES DISTRIBUTION)
-  EXISTING POST TOP STREETLIGHT POLE (4.5m - 69W LED TYPE 4AH DISTRIBUTION)
-  LUMINAIRE ON RED PHASE CONDUCTOR
-  LUMINAIRE ON BLACK PHASE CONDUCTOR
-  EXISTING JUNCTION BOX
-  PROPOSED 35mm RPVC (REFER TO SITE PLAN FOR CONTENTS)
-  EXISTING CONDUIT AND CONDUCTORS

NOT FOR CONSTRUCTION

2026-01-21



COQ. ASBUILT No.

EXXXX

Benchmark

Contractor to contact Telus, BC Hydro, FortisBC and BC one call prior to construction to confirm locations of utilities and appurtenances requiring adjustment.

Plot Date: January 21, 2026



DMD & Associates
Electrical Consultants Ltd.

#12-17581 104A Avenue, Surrey, BC, Canada V4H 5M3
www.dmdeng.com 604-568-2012
office@dmdeng.com Fax 604-568-2012

DMD PROJECT No. 8601-25-01 of 03

1	2026-01-21	CH	ISSUED FOR TENDER		
0	2026-01-08	CH	90% SUBMISSION		
No.	Date	By	Revisions		

ACCEPTED FOR
CONSTRUCTION
Date: _____

Manager of
Development Servicing

Coquitlam

Engineering & Public Works

3000 Gulfdrive Way, Coquitlam, B.C., V3B 7N2

PERMIT TO PRACTICE

Signature: _____

Date: _____

PERMIT NUMBER: 1000771

The Association of Professional Engineers
and Geoscientists of British Columbia



Design by

CH 2-4-10-2025

Drawn by

REK 2-4-10-2025

Checked by

Date 2-4-10-2025

Approved by

MC 08-01-2026

Scale

N/A

Sheet of

1 OF 3

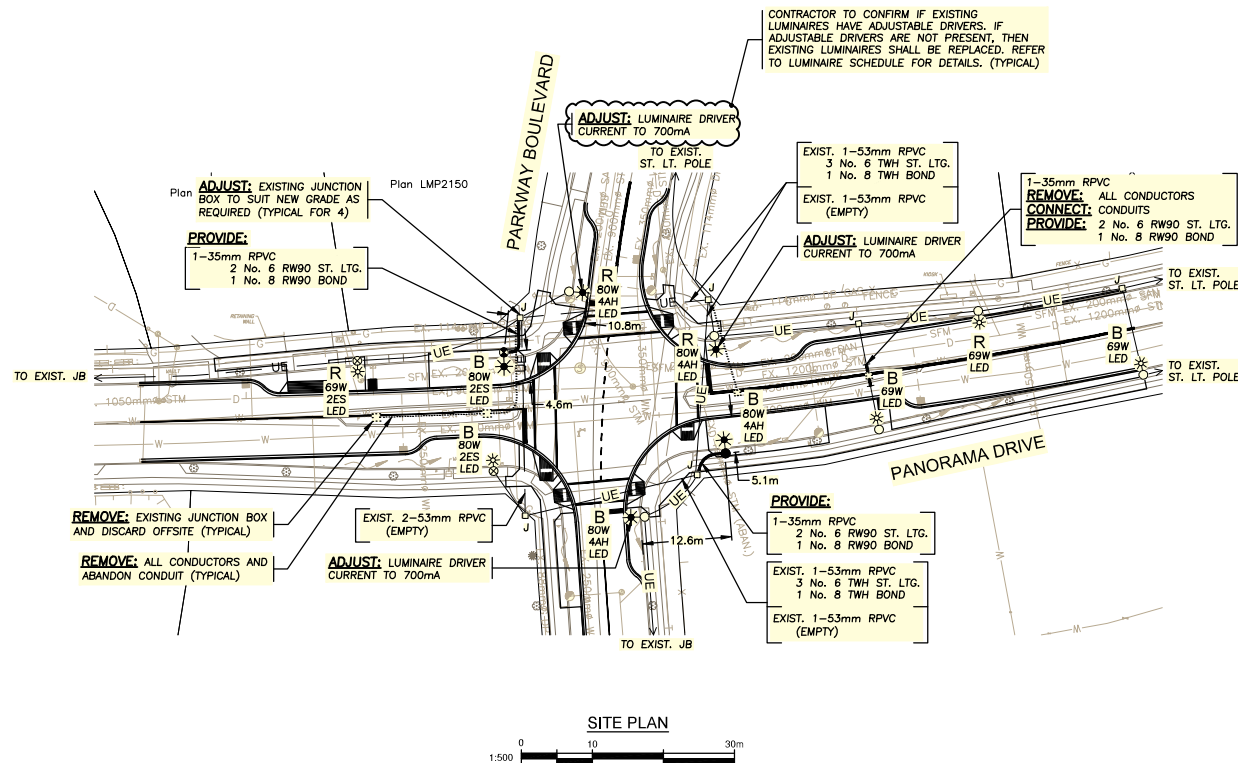
Eng. Project No.

.

Project

**PARKWAY BOULEVARD AND
PANORAMA DRIVE
INTERSECTION LIGHTING**

File: 8601-25



INTERSECTION DESIGN CRITERIA PER: (CITY BYLAW 3558)			
INTERSECTION (NAME)	PANORAMA DRIVE		PARKWAY BOULEVARD
LAND USE CLASSIFICATION	RESIDENTIAL		RESIDENTIAL
ROADWAY CLASSIFICATION & WIDTH	COLLECTOR		LOCAL
PEDESTRIAN CONFLICT	MEDIUM		MEDIUM
ILLUMINANCE RECOMMENDED/EXISTING	16.0 LUX		17.9 LUX
UNIFORMITY RECOMMENDED/EXISTING	4.0:1		1.7:1
LIGHT LOSS FACTOR	0.84		
EQUIPMENT			
FIXTURE TYPE: LED	WATTAGE: 80W (PROPOSED)	MTG. HEIGHT: 4.5m	DIST TYPE: 4AH
IES FILE:	NXT-36S-700mA-4AH-4000K.ies	MODEL: NXT 36S SERIES	
FIXTURE TYPE: LED	WATTAGE: 69W (EXISTING)	MTG. HEIGHT: 6.0m	DIST TYPE: 2ES
IES FILE:	NXT-36S-600mA-2ES-4000K.ies	MODEL: NXT 36S SERIES	
FIXTURE TYPE: LED	WATTAGE: 80W (EXISTING & PROPOSED)	MTG. HEIGHT: 6.0m	DIST TYPE: 2ES
IES FILE:	NXT-36S-700mA-2ES-4000K.ies	MODEL: NXT 36S SERIES	
* EXISTING LUMINAIRE INFORMATION PER CITY GIS. ** BASED ON 20 YEAR FUTURE LIFE AND 10 YEAR CLEANING CYCLE			

* EXISTING LUMINAIRE INFORMATION PER CITY GIS.
** BASED ON 20 YEAR FIXTURE LIFE AND 10 YEAR CLEANING CYCLE

NOT FOR CONSTRUCTION

2026-01-21

LOCATING EQUIPMENT

FOR CLARITY CONDUITS, JUNCTION BOXES AND STREETLIGHT POLES MAY NOT BE SHOWN AT DESIGN OFFSETS. CONTRACTOR SHALL LOCATE ALL EQUIPMENT BASED ON STATIONS AND/OR OFFSETS AS NOTED AND SHALL NOT RELY ON COORDINATES OBTAINED FROM DMD DIGITAL DRAWINGS. CONTRACTOR TO REPORT ANY CONFLICTS OR DISCREPANCIES TO DMD & ASSOCIATES PRIOR TO ORDERING EQUIPMENT.

CHECK BEFORE YOU DIG

CONTRACTOR SHALL REFER TO MUNICIPAL RECORD / CIVIL DESIGN DRAWINGS FOR ALL OTHER UTILITIES, SERVICE LOCATIONS, AND DETAILS. THE EXACT LOCATION OF THESE UTILITIES SHALL BE DETERMINED ON SITE BY THE CONTRACTOR. CONTRACTOR TO REPORT ANY CONFLICTS OR DISCREPANCIES TO DMD & ASSOCIATES PRIOR TO ORDERING BASES.



COQ. ASBUILT No.
EXXXX

PROVIDED RECORD DRAWINGS DO NOT SHOW THE LIMITS OF THE CONNECTED SERVICES TO THE EAST AND NORTH. SERVICE CUTOFF ASSUMED TO BE IMMEDIATELY NORTH OF THE INTERSECTION. SERVICE CUTOFF TO BE CONFIRMED PRIOR TO FINAL SUBMISSION

120V SERVICE LOAD
(EXISTING 100A-120/240V SERVICE BASE ON PANORAMA DRIVE)

WATTAGE (W)	CCT.PHASE	EXISTING	REMOVED	NEW	TOTAL No. OF LIGHTS	CURRENT(A)
54W ST. LTG. (LED)	R	1	0	0	1	0.45A
	B	1	0	0	1	0.45A
69W ST. LTG. (LED)	R	12	2	0	10	5.75A
	B	10	1	0	9	5.16A
80W ST. LTG. (LED)	R	0	0	2	2	1.33A
	B	1	0	3	4	2.67A

1.56% VOLTAGE DROP

Benchmark

Contractor to contact Telus, BC Hydro, FortisBC and BC one call prior to construction to confirm locations of utilities and appurtenances requiring adjustment.

Plot Date: January 21, 2026



DMD & Associates
Electrical Consultants Ltd.
#12-17358 104A Avenue, Surrey, BC, Canada V4N 5M3
www.dmdeng.com 604/568-4013
office@dmdeng.com Fax 604/568-4012
DMD PROJECT No. 8601-25-02 of 03

1	2026-01-21	CH	ISSUED FOR TENDER
0	2026-01-08	CH	90% SUBMISSION

No. Date By Revisions

ACCEPTED FOR
CONSTRUCTION
Date: _____

Manager of
Development Servicing

Coquitlam

Engineering & Public Works
3000 Guildford Way, Coquitlam, B.C. V3B 7N2

PERMIT TO PRACTICE

Signature: _____

Date: _____

PERMIT NUMBER: 1000771
The Association of Professional Engineers
and Geoscientists of British Columbia

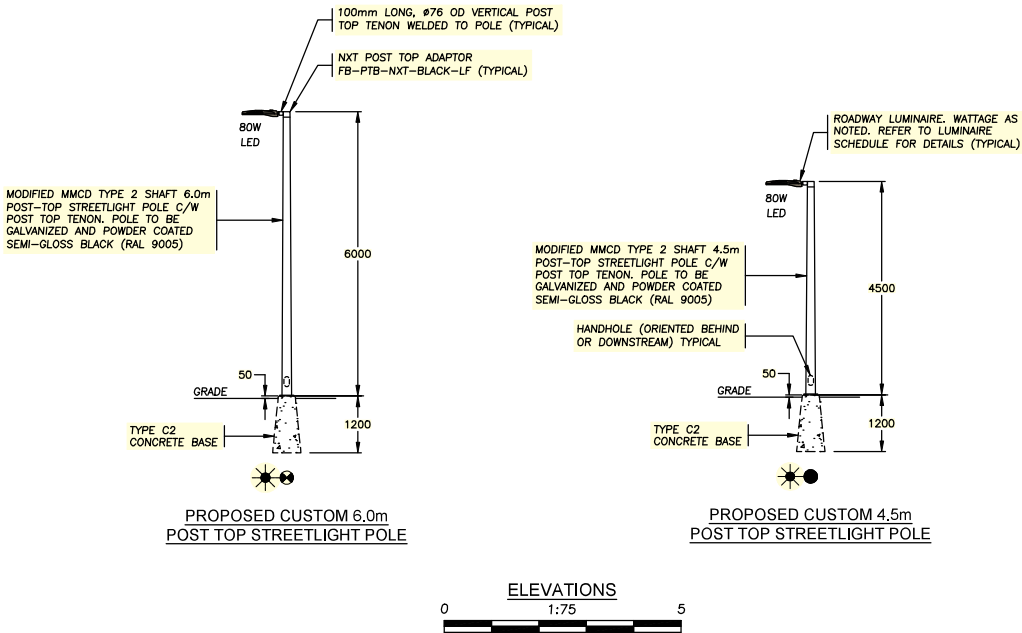


Design by CH Date 24-10-2025
Drawn by REK Date 24-10-2025
Checked by RAC Date 24-10-2025
Approved by MC Date 09-01-2026

Scale
1:500
Sheet of
2 OF 3
Eng. Project No.

Project **PARKWAY BOULEVARD AND
PANORAMA DRIVE**
Description **INTERSECTION LIGHTING**

File: 8601-25



LUMINAIRE SCHEDULE			
PRODUCT	MANUFACTURER	SPECIFICATION	EXCEPTIONS
ROADWAY LUMINAIRE	LIVEABLE CITIES	80W: NXT-36S-5-7-4AH-7-BK-3-UL-S-2H 80W: NXT-36S-5-7-2ES-7-BK-3-UL-S-2H	C/W NEMA WATTAGE LABEL & SHORTING CAP, 4000K

NOT FOR CONSTRUCTION
2026-01-21



COQ. ASBUILT No.
EXXXX

REFER TO THE CITY OF COQUITLAM
STREET LIGHTING APPROVED PRODUCTS
LIST FOR ALL EQUIPMENT DETAILS

Benchmark

Contractor to contact Telus, BC Hydro, FortisBC and BC one call prior to construction to confirm locations of utilities and appurtenances requiring adjustment.

Plot Date: January 21, 2026

DMD
DMD & Associates
Electrical Consultants Ltd.
#12-17358 104A Avenue, Surrey, BC, Canada V4N 5M3
www.dmdeng.com 604/568-4010
office@dmdeng.com Fax: 604/568-4012
DMD PROJECT No. 8601-25-03 of 03

1	2026-01-21	CH	ISSUED FOR TENDER	
0	2026-01-08	CH	90% SUBMISSION	
No.	Date	By	Revisions	

ACCEPTED FOR CONSTRUCTION
Date: _____

Manager of Development Servicing

Coquitlam
Engineering & Public Works
3000 Guildford Way, Coquitlam, B.C. V3B 7N2

PERMIT TO PRACTICE
Signature: _____
Date: _____
PERMIT NUMBER: 1000771
The Association of Professional Engineers and Geoscientists of British Columbia



Design by	Date	Scale
CH	24-10-2025	1:500
Drawn by	Date	Sheet of
REK	24-10-2025	3 OF 3
Checked by	Date	Eng. Project No.
RAC	24-10-2025	.
Approved by	Date	
MC	08-01-2026	

Project **PARKWAY BOULEVARD AND PANORAMA DRIVE**
Description **INTERSECTION LIGHTING**
File: 8601-25