

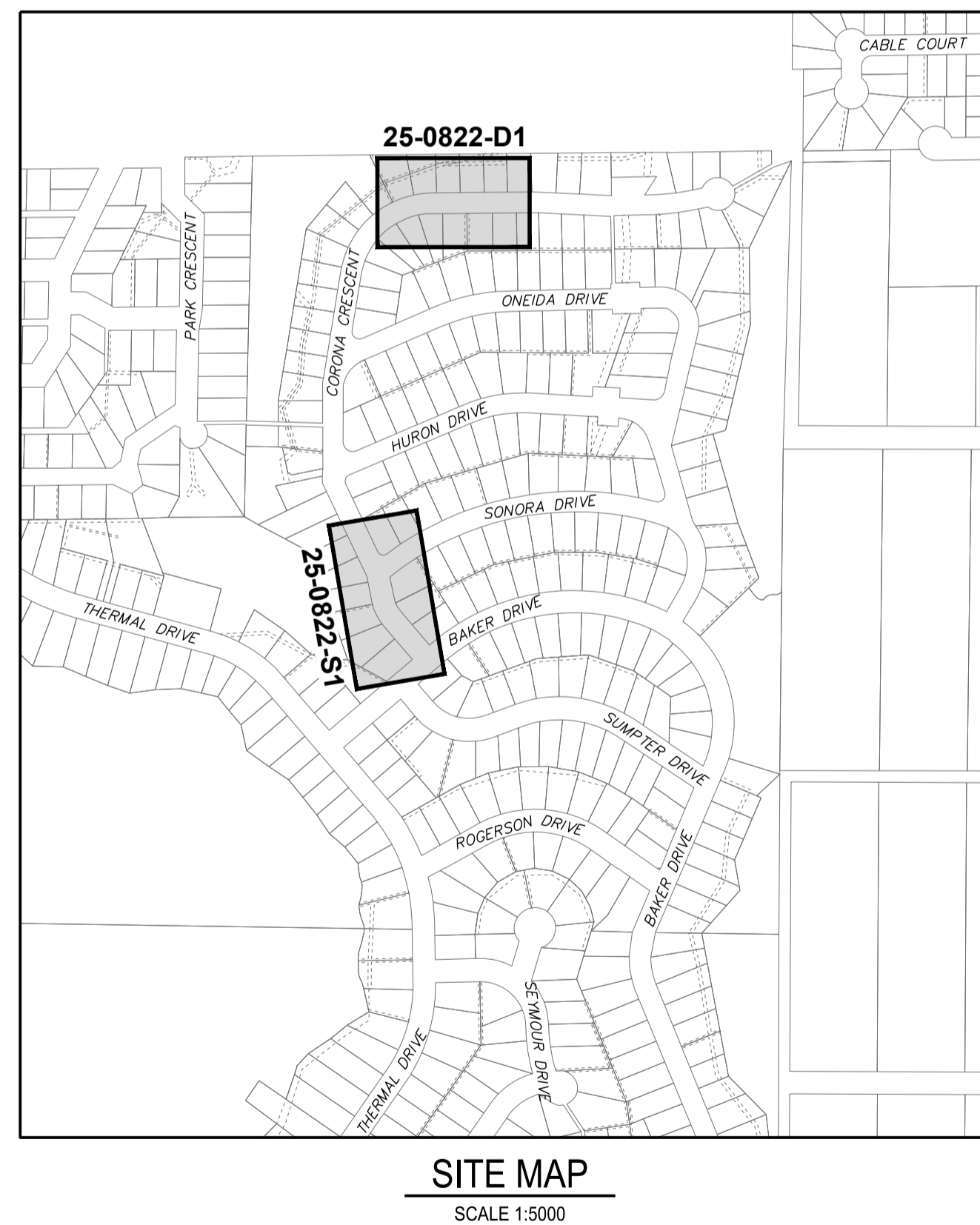
**CITY OF COQUITLAM**  
**3000 GUILDFORD WAY, COQUITLAM, BC V3B 7N2**

**PROJECT # 85266**

# CORONA CRESCENT STORM AND SANITARY REPLACEMENTS

**ISSUED FOR TENDER**

LEGEND		
EXISTING	PROPOSED	DESCRIPTION
--- IPF ---		IRON PROPERTY PIN
[Hatched Box]	[Hatched Box]	BUILDING
[Hatched Line]	[Hatched Line]	EDGE OF PAVEMENT
[Hatched Line]	[Hatched Line]	CURB & GUTTER
[Hatched Line]	[Hatched Line]	TRUCK ROUTE
-S-○-S-	-S-●-S-	SANITARY SEWER
○-○-○	●-●-●	SANITARY CONNECTION & INSPECTION CHAMBER
○-○-○	●-●-●	STORM SEWER
○-○-○	●-●-●	STORM CONNECTION & INSPECTION CHAMBER
--- FD ---	--- FD ---	STORM SEWER SERVICE
--- FD ---	--- FD ---	FRENCH DRAIN
○-○-○	○-○-○	STORM SEWER & CLEANOUT
[Hatched Box]	[Hatched Box]	CATCH BASIN - TOP INLET & SIDE INLET
[Hatched Box]	[Hatched Box]	LAWN DRAIN
[Hatched Box]	[Hatched Box]	CATCH BASIN MANHOLE
[Hatched Line]	[Hatched Line]	SWALE
[Hatched Line]	[Hatched Line]	DITCH
[Hatched Line]	[Hatched Line]	SIDEWALK (ASPHALT)
[Hatched Line]	[Hatched Line]	SIDEWALK (CONCRETE)
[Hatched Line]	[Hatched Line]	RETAINING WALL
W	W	WATERMAIN
W	W	WATER SERVICE CONNECTION
W	W	WATER VALVE
W	W	AIR VALVE
W	W	HYDRANT & VALVE ASSEMBLY
W	W	YARD HYDRANT
W	W	CAPPED END
W	W	WATER METER
W	W	BLOW-OFF
T	T	UNDERGROUND TELEPHONE & MANHOLE
E	E	UNDERGROUND ELECTRICAL & MANHOLE
G	G	GASMAIN
L	L	TRAFFIC SIGNAL & ST LIGHT U/G DUCTS
[Symbol]	[Symbol]	ORNAMENTAL ST LIGHT - DAVIT
[Symbol]	[Symbol]	ORNAMENTAL ST LIGHT - POST TOP
[Symbol]	[Symbol]	UTILITY POLE
[Symbol]	[Symbol]	UTILITY POLE W/ LIGHT
[Symbol]	[Symbol]	JUNCTION BOX
[Symbol]	[Symbol]	GROUND ELEVATION
[Symbol]	[Symbol]	DIRECTION OF OVERLAND FLOW



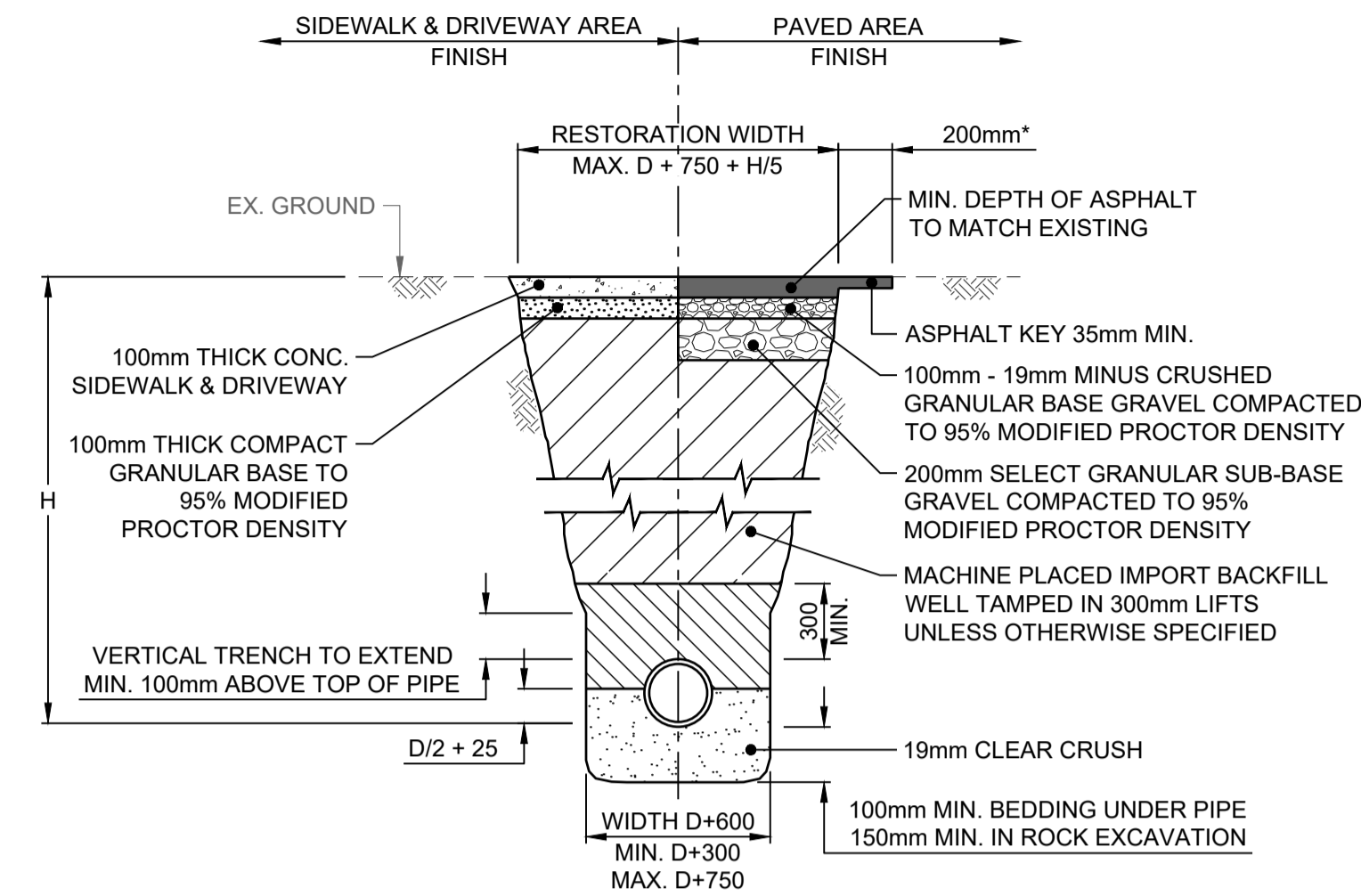
DRAWING INDEX				
SHEET #	DWG. TITLE	STREET NAME	LOCATION	RFB DWG. #
	COVER SHEET			
01	GENERAL NOTES AND TYPICAL DETAILS	CORONA CRESCENT		25-0822-ND1
02	SANITARY MAIN - PLAN & PROFILE	CORONA CRESCENT	SONORA DRIVE TO BAKER DRIVE	25-0822-S1
03	STORM MAIN - PLAN & PROFILE	CORONA CRESCENT	#1048 TO #1044 CORONA CRESCENT	25-0822-D1



**R.F. BINNIE & ASSOCIATES LTD.**  
 300 - 4940 Canada Way,  
 Burnaby, BC V5G 4K6  
 TEL 604 420 1721  
 BINNIE.com

**GENERAL CONSTRUCTION NOTES:**

- ALL MATERIALS SUPPLIED AND CONSTRUCTION PERFORMED SHALL BE IN ACCORDANCE WITH THE CITY OF COQUITLAM SUBDIVISION AND DEVELOPMENT SERVICING BYLAW NO. 3558, 2003, THE LATEST EDITION OF WORKSAFE BC, THE LATEST EDITION OF THE MASTER MUNICIPAL CONTRACT DOCUMENTS (MMCD), THE CURRENT EDITION OF THE CITY OF COQUITLAM SUPPLEMENTARY SPECIFICATIONS, AND APPLICABLE DESIGN CRITERIA SPECIFICATIONS AND STANDARD DRAWINGS AND CONSTRUCTION SPECIFICATIONS.
- ALL MATERIAL/UTILITY TESTING MUST BE DONE IN ACCORDANCE WITH THE MMCD; TESTING TO BE CARRIED OUT BY A QUALIFIED MATERIAL/UTILITY TESTING FIRM AND PAID FOR BY THE CONTRACTOR. THE CONTRACTOR IS TO PROVIDE COPIES OF ALL TEST RESULTS TO THE ENGINEER. THE CONTRACTOR IS TO NOTIFY THE ENGINEER 48 HOURS PRIOR TO CONSTRUCTION AND VERIFY THEY HAVE THE LATEST DRAWINGS ISSUED FOR CONSTRUCTION.
- THE CONTRACTOR IS TO NOTIFY THE ENGINEER AT THE FOLLOWING STAGES OF THE CONSTRUCTION SCHEDULE:
  - DELIVERY OF STORM SEWER MATERIAL TO SITE.
  - DELIVERY OF SANITARY SEWER MATERIALS TO SITE.
  - DELIVERY OF WATER WORKS MATERIALS TO SITE.
  - INITIAL INSTALLATION OF STORM SEWER, SANITARY SEWER, AND WATER WORKS CONSTRUCTION PRIOR TO BACKFILLING.
  - INSTALLATION OF CONCRETE FORMWORK, OR SETTING OF GUIDES USED FOR EXTRUDING CURB AND GUTTER, PRIOR TO PLACING CONCRETE.
  - GRADING OF ROAD SURFACES PRIOR TO PAVING.
- ALL WORK SHALL CONFORM TO THE CONSTRUCTION STANDARDS SPECIFIED IN THE SUBDIVISION AND DEVELOPMENT SERVICES BYLAW AND SHALL PASS THE INSPECTION OF THE CITY OF COQUITLAM OPERATIONS DEPARTMENT. CONTACT SENIOR ENGINEERING INSPECTOR, LARRY HOVEY - TELEPHONE 604-927-4319 72 HOURS PRIOR TO CONSTRUCTION.
- THE CONTRACTOR SHALL COMPLETE A BCICALL TO OBTAIN UTILITY LOCATION INFORMATION PRIOR TO CONSTRUCTION.
- THE CONTRACTOR SHALL HAVE COMPLETE CONTROL OF THE WORK AND SHALL EFFECTIVELY DIRECT AND SUPERVISE THE WORK SO AS TO ENSURE CONFORMANCE WITH THE CONTRACT DOCUMENTS, SUBJECT TO THE OWNER'S RIGHTS AS SPECIFICALLY SET OUT IN THE CONTRACT DOCUMENTS TO GIVE DIRECTIONS REGARDING WORK. THE CONTRACTOR SHALL BE SOLELY RESPONSIBLE FOR CONSTRUCTION MEANS, METHODS, TECHNIQUES, SEQUENCES AND PROCEDURES AND FOR COORDINATING THE VARIOUS PARTS OF THE WORK UNDER THE CONTRACT.
- THE CONTRACTOR SHALL MAINTAIN THE WORK IN A TIDY CONDITION AND FREE FROM THE ACCUMULATION OF WASTE, DEBRIS, AND WASTE PRODUCTS, OTHER THAN THAT CAUSED BY THE OWNER OR OTHER CONTRACTORS.
- THE CONTRACTOR SHALL BE SOLELY RESPONSIBLE FOR CONSTRUCTION SAFETY AT THE PLACE OF WORK AS AND TO THE EXTENT REQUIRED BY APPLICABLE CONSTRUCTION SAFETY LEGISLATION, REGULATIONS AND CODES, INCLUDING THE WORKERS COMPENSATION ACT AND APPLICABLE REGULATIONS, AND BY GOOD CONSTRUCTION PRACTICE.
- THE CONTRACTOR SHALL ENSURE THAT ALL APPROVALS AND/OR PERMITS REQUIRED FOR THE PROPOSED WORKS HAVE BEEN OBTAINED FROM ALL AUTHORITIES AND AGENCIES PRIOR TO THE COMMENCEMENT OF CONSTRUCTION.
- WORKSAFE B.C. IS TO BE NOTIFIED BY THE CONTRACTOR PRIOR TO THE START OF CONSTRUCTION.
- THE LOCATIONS OF THE EXISTING UTILITIES, AS SHOWN ON THE DESIGN DRAWINGS, ARE APPROXIMATE ONLY AND THIS INFORMATION MAY NOT BE FULLY ACCURATE OR COMPLETE. PRIOR TO THE START OF CONSTRUCTION, THE CONTRACTOR SHALL LOCATE AND EXPOSE ALL EXISTING UTILITIES AT ALL TIE-IN POINTS, AT ALL POINTS WHERE A CONFLICT MAY ARISE DURING THE CONSTRUCTION OF THE PROPOSED WORKS, AND TO CONFIRM DESIGN ELEVATIONS. IN THE EVENT OF A CONFLICT, THE CONTRACTOR SHALL IMMEDIATELY CONTACT THE ENGINEER FOR DIRECTION. THE CONTRACTOR SHALL ASSUME ALL COSTS AND EXPENSES THAT MAY OCCUR FOR DAMAGES, SUPPORT OF AND REPAIR TO SUCH PLANT BY REASON OF THE NEGLIGENCE OF HIS OPERATIONS. EXISTING UTILITIES SHOWN ARE DERIVED FROM AS-BUILT INFORMATION AND ALL UTILITIES MAY NOT BE NECESSARILY SHOWN. THE ENGINEER, THE CITY OF COQUITLAM AND THE UTILITY COMPANIES CANNOT BE HELD LIABLE FOR ANY DISCREPANCIES, CONFLICTS OR OMISSIONS.
- THE CONTRACTOR WILL BE HELD RESPONSIBLE FOR THE REPAIR OF ANY DAMAGE CAUSED TO EXISTING INFRASTRUCTURE, STREET OR SERVICES BY CONSTRUCTION EQUIPMENT AND/OR TRUCKS HAULING MATERIAL TO THE SITE. THIS MAY INCLUDE DAILY CLEANING OR SWEEPING EXISTING ROADS OF DIRT AND DEBRIS CAUSED BY CONSTRUCTION ACTIVITIES.
- ALL CONSTRUCTION IN AND ABOUT A WATERCOURSE MUST RECEIVE PRIOR APPROVAL FROM THE PROVINCIAL MINISTRY OF ENVIRONMENT AND/OR THE FEDERAL DEPARTMENT OF FISHERIES AND OCEANS CANADA WHERE APPLICABLE.
- EXISTING UNDERGROUND UTILITY TRENCHES ADJACENT TO THE PROPOSED UNDERGROUND UTILITY INSTALLATION SHALL BE ADEQUATELY PROTECTED FROM SLOUGHING IN ORDER TO PREVENT OVER-WIDTH EXCAVATION.
- OPEN TRENCH OPERATIONS IN EXISTING PAVEMENT SHALL BE VERTICAL AND REPLACED WITH HOT MIX ASPHALTIC CONCRETE AFTER BACKFILL AND COMPACTION WITHIN THE SAME DAY OF TRENCHWORK. NO TRENCHES IN EXISTING ROADWAY SHALL BE LEFT UNCOVERED OVERNIGHT WITHOUT APPROVAL OF THE CITY OF COQUITLAM AND FULFILLMENT OF ANY CONDITIONS OF THAT APPROVAL. THE CONTRACTOR SHALL RESTORE THE EXISTING PAVEMENT ACROSS ALL TRENCH EXCAVATIONS TO ORIGINAL CONDITION OR BETTER AND THE FINISHED PAVEMENT SHALL BLEND IN SMOOTHLY WITH THE EXISTING PAVEMENT.
- THE CONTRACTOR SHALL USE EXTREME CAUTION WHEN WORKING NEAR EXISTING SERVICES/UTILITIES AND ANY SERVICES/UTILITIES DISTURBED ARE TO BE REPLACED TO THE SATISFACTION OF THE CITY OF COQUITLAM OR OTHER APPROVING AGENCIES.
- ANY MATERIAL SUBSTITUTION AND/OR CHANGE IN DESIGN MUST OBTAIN WRITTEN APPROVAL FROM THE ENGINEER PRIOR TO THE COMMENCEMENT OF CONSTRUCTION.
- ALL SURVEY MONUMENTS, BENCHMARKS, AND LEGAL PINS MUST BE PROTECTED, AND ANY DAMAGE CAUSED BY THE NEGLIGENCE OF THE CONTRACTOR SHALL BE REPAIRED AND RESURVEYED TO THE CITY OF COQUITLAM'S SATISFACTION AT THE CONTRACTOR'S EXPENSE.
- ALL EXISTING IMPROVEMENTS OR LANDSCAPING SHALL BE RESTORED TO THE SATISFACTION OF THE CITY OF COQUITLAM. IN SPECIAL CASES, THE CITY OF COQUITLAM MAY REQUIRE WRITTEN ACCEPTANCE BY THE AFFECTED PROPERTY OWNERS FOR RESTORATION WORKS PERFORMED BY THE CONTRACTOR.
- PRIOR TO THE START OF CONSTRUCTION, THE CONTRACTOR SHALL OBTAIN WRITTEN PERMISSION FROM ADJACENT PROPERTY OWNERS FOR A TEMPORARY ENCROACHMENT ON PRIVATE PROPERTY AND A REGISTERED DOCUMENT FOR A PERMANENT ENCROACHMENT.
- THE CONTRACTOR SHALL BE SOLELY RESPONSIBLE FOR PROVIDING THE NECESSARY FIELD SURVEYS TO PERMIT THE LAYOUT, CONSTRUCTION AND MEASUREMENT OF QUANTITIES OF THE WORK FOR PAYMENT. RE-ESTABLISHMENT OF CONTROLS, SURVEY POSTS AND BENCHMARKS WHICH ARE DAMAGED OR LOST SHALL BE AT THE CONTRACTOR'S EXPENSE.
- DIMENSIONS, GRADES, COORDINATES, AND DETAILS OF THE DESIGN ARE TO BE CONFIRMED IN THE FIELD PRIOR TO CONSTRUCTION. IMMEDIATELY NOTIFY THE ENGINEER OF ANY DISCREPANCIES, CONFLICTS, OR OMISSIONS.
- THE CONTRACTOR SHALL BE RESPONSIBLE TO PROVIDE TRAFFIC CONTROL, PEDESTRIAN CONTROL, AND EMERGENCY VEHICLE ACCESS AS REQUIRED THROUGHOUT CONSTRUCTION OF THE PROPOSED WORKS AS CONTAINED HEREIN. A COMPLETED LANE CLOSURE REQUEST FORM, AND TRAFFIC CONTROL PLAN SHALL BE SUBMITTED TO THE CITY FOR APPROVAL PRIOR TO COMMENCING CONSTRUCTION. THE TRAFFIC CONTROL PLAN SHALL MINIMIZE DISRUPTION TO TRAFFIC AND SHALL BE APPROVED BY THE CITY PRIOR TO IMPLEMENTATION.
- THE CONTRACTOR SHALL PROVIDE TO THE ENGINEER ONE (1) SET OF RED LINED AS-CONSTRUCTED DRAWINGS SHOWING THE LOCATION AND ELEVATION OF ALL NEW AND EXISTING WORKS ENCOUNTERED ON THE PROJECT.

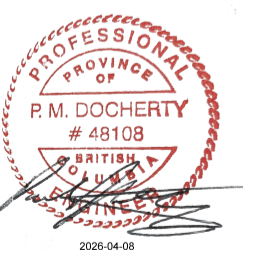


**TYPICAL TRENCH REPAIR DETAIL**

SCALE - N.T.S.

NOT TO SCALE

DISCLAIMER: This drawing must not be reproduced without the written permission of R.F. Binnie & Associates Ltd. This drawing is not to be used for construction unless it is stamped "ISSUED FOR CONSTRUCTION" and signed by R.F. Binnie & Associates Ltd. It is the contractor's responsibility to ensure that he is in possession of the latest revision of this drawing.



EGBC PERMIT No. 1001128

**NOT FOR CONSTRUCTION**

Edge of pavement	Hydrant	Sanitary service	Hydro Guy Wire
Watermain and valve	Water air valve	Sanitary cleanout	Hydro Kiosk
Drainage sewer, MH	Water blowoff	Utility pole(joint pole)	Vegetation Canister
Drainage ditch	Water service	Utility pole with light	Vegetation Deciduous
Sanitary sewer, MH	Catch basin, top inlet	Streetlight, down	Vegetation Shrub
Sanitary forcemain	Catch basin, side inlet	Streetlight, post top	Survey Traverse Hub
Gasmain and valve	Catch basin, round	Comb signal pole	Survey Iron Pin
Hydro duct, MH	Drainage service	Traffic signal pole	Survey Lead Plug
Telephone duct, MH	Drainage cleanout	Junction box	Survey Monument

No.	Date	By	Revisions
4	2026-04-08	PD	ISSUED FOR TENDER
3	2026-04-01	SV	100% DESIGN SUBMISSION
2	2026-01-23	MK	PRELIMINARY DESIGN RE-SUBMISSION
1	2025-12-12	LY	PRELIMINARY DESIGN SUBMISSION

Design by	Date
LY	
Drawn by	Date
LY	
Checked by	Date
PD	
Approved by	Date
PD	

**BINNIE**  
The people behind your infrastructure.  
TEL 604 420 1721 BINNIE.com

**Coquitlam**  
Engineering & Public Works  
3000 Guildford Way, Coquitlam, B.C. V3B 7N2

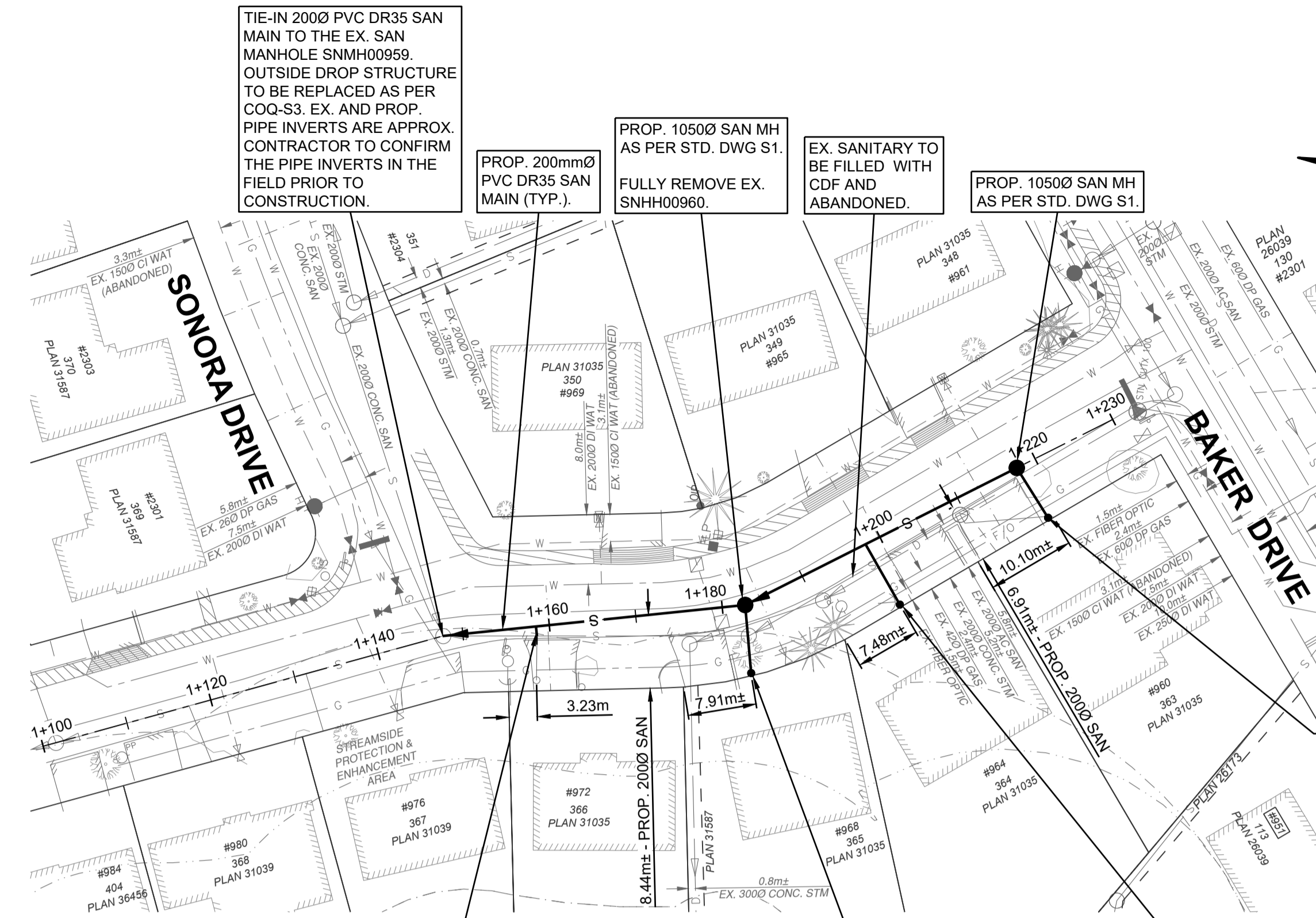
Scale horiz. **N.T.S.** Scale vert. **N.T.S.**  
Sheet **01** of **03**  
Eng. Project No. **25-0822**

Project **CORONA CRESCENT**  
Description **GENERAL NOTES AND TYPICAL DETAILS**  
File: **25-0822-ND1**  
REV. **4**

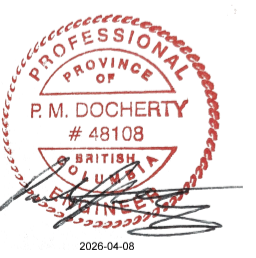
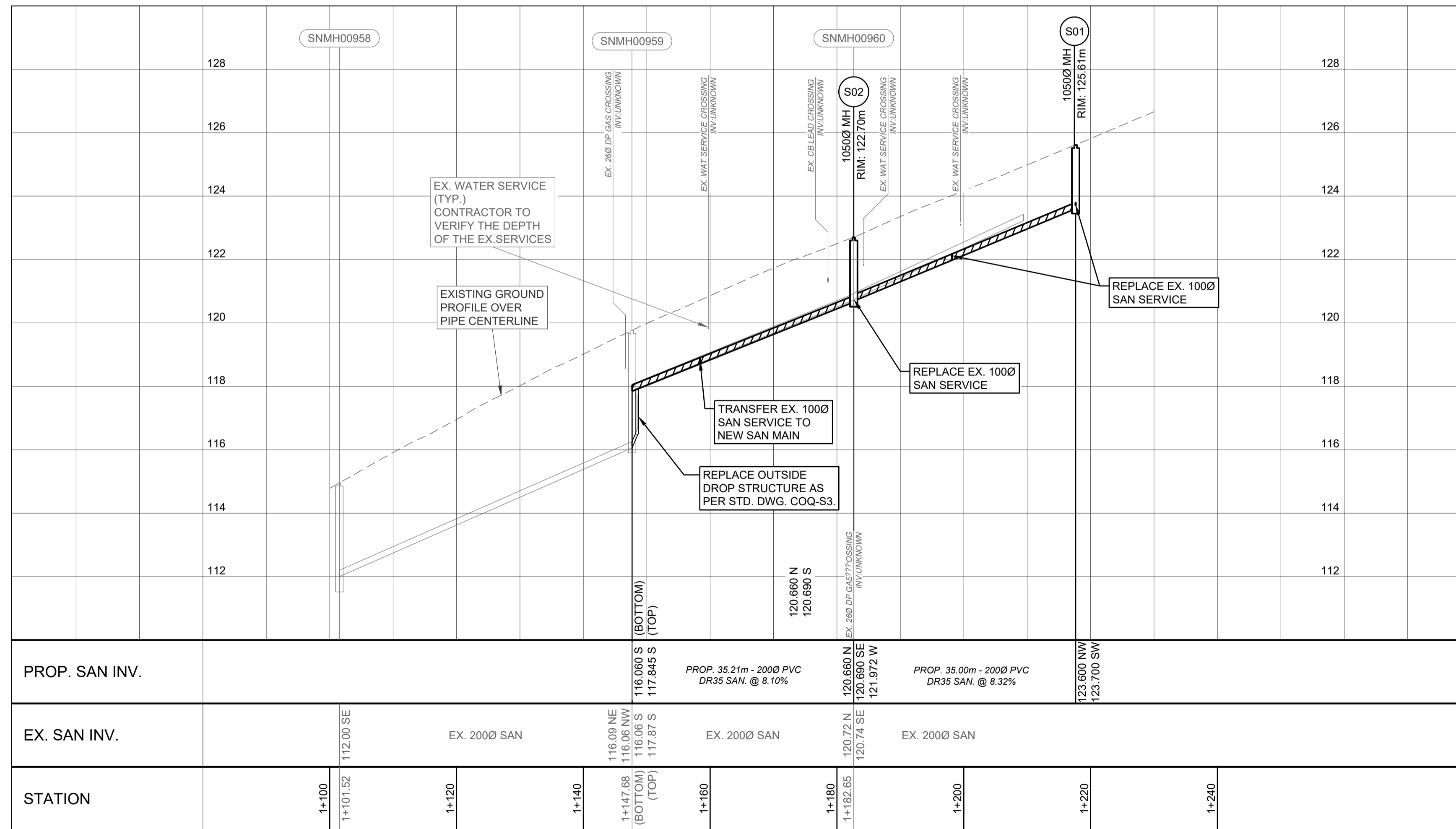
**BENCHMARK:**  
 GEODETIC ELEVATIONS ARE DERIVED FROM G.P.S. OBSERVATION AT STN. CUTX 100  
 LOCATED IN THE INTERSECTION OF CORONA CRESCENT AND BAKER DRIVE  
 ELEVATION=127.039m, DATUM IS [CGVD28 (GVRD 2018)]

**SANITARY SEWER NOTES:**

- SANITARY SEWER SHALL BE CONSTRUCTED TO MMCD 2000 EDITION AND CITY OF COQUITLAM SUPPLEMENTARY SPECIFICATIONS.
- SANITARY SEWER SHALL BE POLYVINYL CHLORIDE (PVC) WITH A MINIMUM SDR35 SPECIFICATION UNLESS OTHERWISE NOTED. ALTERNATIVELY, WITH PRE-APPROVAL, NON-REINFORCED CONCRETE PIPES CONFORMING TO ASTM DESIGNATION C-14 CLASS 3 OR REINFORCED CONCRETE PIPES CONFORMING TO ASTM C-76 CLASS 3.
- THE MINIMUM COVER OF THE PROPOSED SANITARY SEWER SHALL BE 1.0 METRE.
- THE MAXIMUM GRADE SHALL BE 15.0% UNLESS PROVISIONS ARE MADE TO ANCHOR THE PIPE TO THE BOTTOM OF THE TRENCH WITH CONCRETE POURED IN PLACE. PIPE ANCHORS ARE TO BE INSTALLED AS PER MMCD STANDARD DRAWING G8.
- SANITARY SERVICE CONNECTIONS SHALL BE MINIMUM 100mm DIAMETER PVC PIPE WITH SDR 28 SPECIFICATION UNLESS NOTED OTHERWISE. SANITARY SERVICE CONNECTIONS SHALL BE INSTALLED FROM THE MAIN TO THE PROPERTY LINE AT A MINIMUM GRADE OF 2.0% PER MMCD STANDARD DRAWING S8 UNLESS NOTED OTHERWISE. ALL SERVICES SHALL ENTER THE MAIN AT A POINT JUST ABOVE THE SPRINGLINE. CONNECTIONS TO NEW MAINS SHALL BE MADE USING WYE FITTINGS. CONNECTIONS TO EXISTING MAINS SHALL BE MADE USING SADDLES. THE MINIMUM DEPTH OF THE SANITARY SERVICE CONNECTION AT PROPERTY LINE SHALL BE 1 METRE AND THE MAXIMUM DEPTH OF THE SANITARY SERVICE CONNECTION AT THE PROPERTY LINE SHALL BE 2 METRES UNLESS DIRECTED OTHERWISE BY THE ENGINEER.
- ALL WYE FITTINGS SHALL BE MANUFACTURED.
- EXISTING INVERTS SHALL BE VERIFIED BY THE CONTRACTOR PRIOR TO THE COMMENCEMENT OF CONSTRUCTION.
- CONTRACTOR EXPOSES AND VERIFIES ALL UTILITY CROSSINGS AND TIE-IN LOCATIONS, AND NOTIFIES THE CONTRACT ADMINISTRATOR OF ANY DISCREPANCIES PRIOR TO CONSTRUCTION.
- CONTRACTOR REPLACES EXISTING UTILITIES OR ROAD STRUCTURES IF DAMAGED BY CONTRACTOR DURING SANITARY SEWER REPLACEMENT.
- COMPLETE DRIVEWAY AND SIDEWALK RESTORATION TO SAME AS EXISTING OR BETTER. CONTRACTOR RESTORES EXPOSED GRAVEL, STAMPED, OR SMOOTH CONCRETE WHERE APPLICABLE.
- THE CONTRACTOR SHALL CONTACT THE CITY OF COQUITLAM PRIOR TO THE COMMENCEMENT OF TIE-IN AND CONNECTION PROCEDURES. TIE-INS AND CONNECTIONS SHALL BE COORDINATED WITH THE CITY OF COQUITLAM. TIE-INS AND CONNECTIONS TO THE EXISTING SANITARY SEWER SHALL BE PERFORMED BY THE CONTRACTOR UNDER THE SUPERVISION OF THE ENGINEER AND THE CITY OF COQUITLAM. THE CONTRACTOR SHALL EXPOSE THE TIE-IN LOCATIONS AND PROVIDE ALL MATERIALS REQUIRED TO COMPLETE THE TIE-INS.
- THE CONTRACTOR IS TO PROVIDE CCTV CAMERA INSPECTIONS OF ALL INSTALLED SANITARY SEWERS INCLUDING SERVICE CONNECTIONS. CCTV CAMERA INSPECTION HARD COPIES AND DIGITAL FORMAT ARE TO BE PROVIDED IN A FORMAT SATISFACTORY TO THE ENGINEER AND CITY OF COQUITLAM. ALL SEWERS ARE TO BE FLUSHED PRIOR TO CAMERA INSPECTIONS.



**CORONA CRESCENT**



EGBC PERMIT No. 1001128

**NOT FOR CONSTRUCTION**

0 H 1:500 20m  
 0 V 1:100 4m  
 DISCLAIMER:  
 This drawing must not be reproduced without the written permission of R.F. Binnie & Associates Ltd.  
 This drawing is not to be used for construction unless it is stamped "ISSUED FOR CONSTRUCTION" and signed by R.F. Binnie & Associates Ltd. It is the contractor's responsibility to ensure that he is in possession of the latest revision of this drawing.

Edge of pavement	Hydrant	Sanitary service	Hydro Guy Wire
Watermain and valve	Water air valve	Sanitary cleanout	Hydro Kiosk
Drainage sewer, MH	Water blowoff	Utility pole (joint pole)	Vegetation Conifer
Drainage ditch	Water service	Utility pole with light	Vegetation Deciduous
Sanitary sewer, MH	Catch basin, top inlet	Streetlight, down	Vegetation Shrub
Sanitary forcemain	Catch basin, side inlet	Streetlight, post top	Survey Traverse Hub
Gasmain and valve	Catch basin, round	Comb signal pole	Survey Iron Pin
Hydro duct, MH	Drainage service	Traffic signal pole	Survey Lead Plug
Telephone duct, MH	Drainage cleanout	Junction box	Survey Monument

No.	Date	By	Revisions
4	2026-04-08	PD	ISSUED FOR TENDER
3	2026-04-01	SV	100% DESIGN SUBMISSION
2	2026-01-23	MK	PRELIMINARY DESIGN RE-SUBMISSION
1	2025-12-12	LY	PRELIMINARY DESIGN SUBMISSION

Design by	Date
LY	
Drawn by	Date
LY	
Checked by	Date
PD	
Approved by	Date
PD	

**BINNIE**  
 The people behind your infrastructure.  
 TEL 604 420 1721 BINNIE.com

**Coquitlam**  
 Engineering & Public Works  
 3000 Guildford Way, Coquitlam, B.C. V3B 7N2

Scale	1:500	Scale	1:100
horiz.		vert.	
Sheet	02	of	03
Eng. Project No.	25-0822		

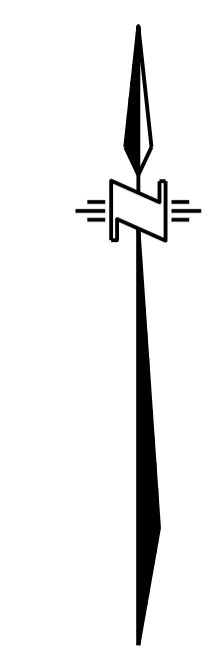
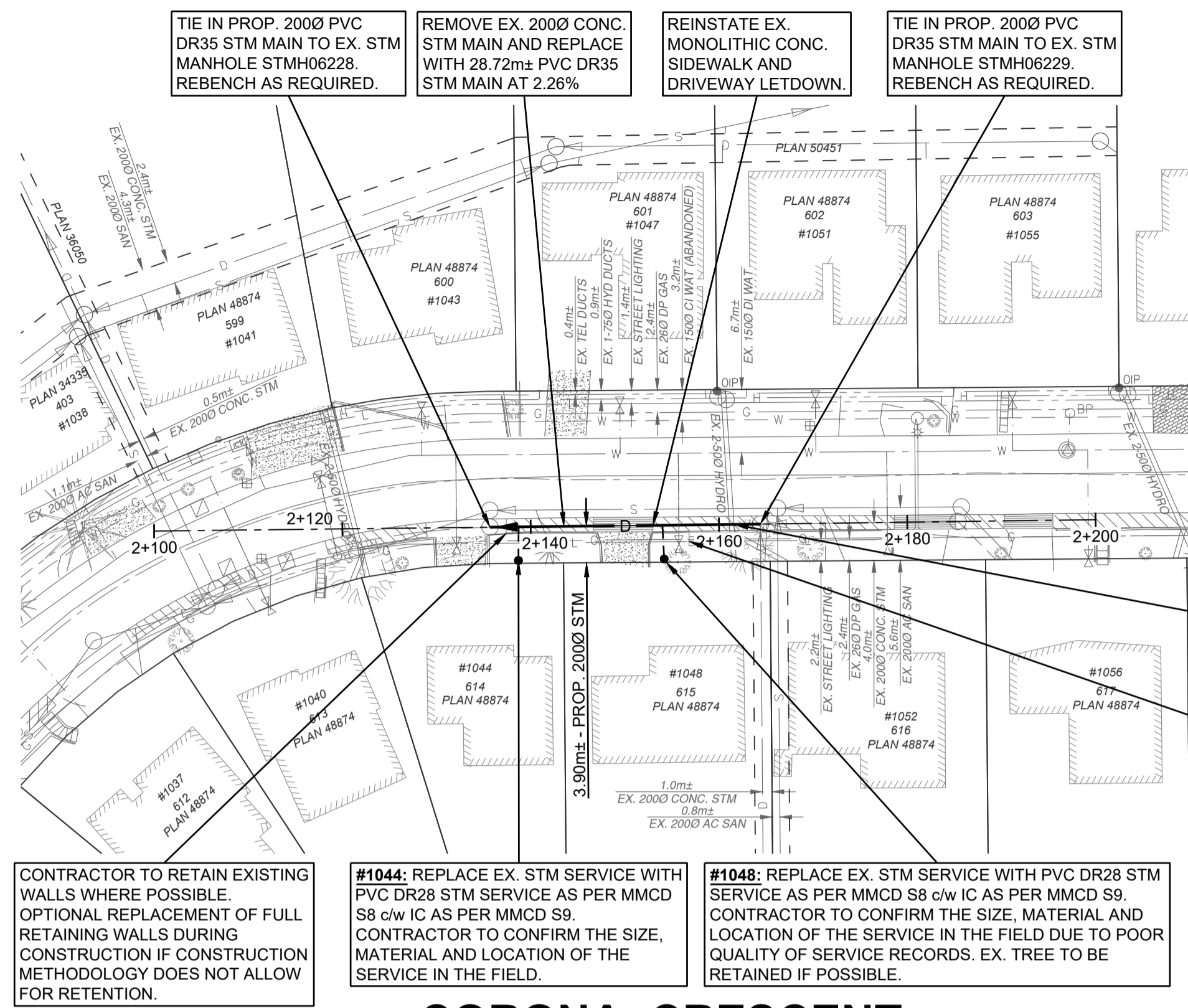
Project **CORONA CRESCENT**  
**SONORA DRIVE TO BAKER DRIVE**  
 Description **SANITARY MAIN - PLAN & PROFILE**  
 File: **25-0822-S1**  
 REV. **4**

**STORM SEWER NOTES:**

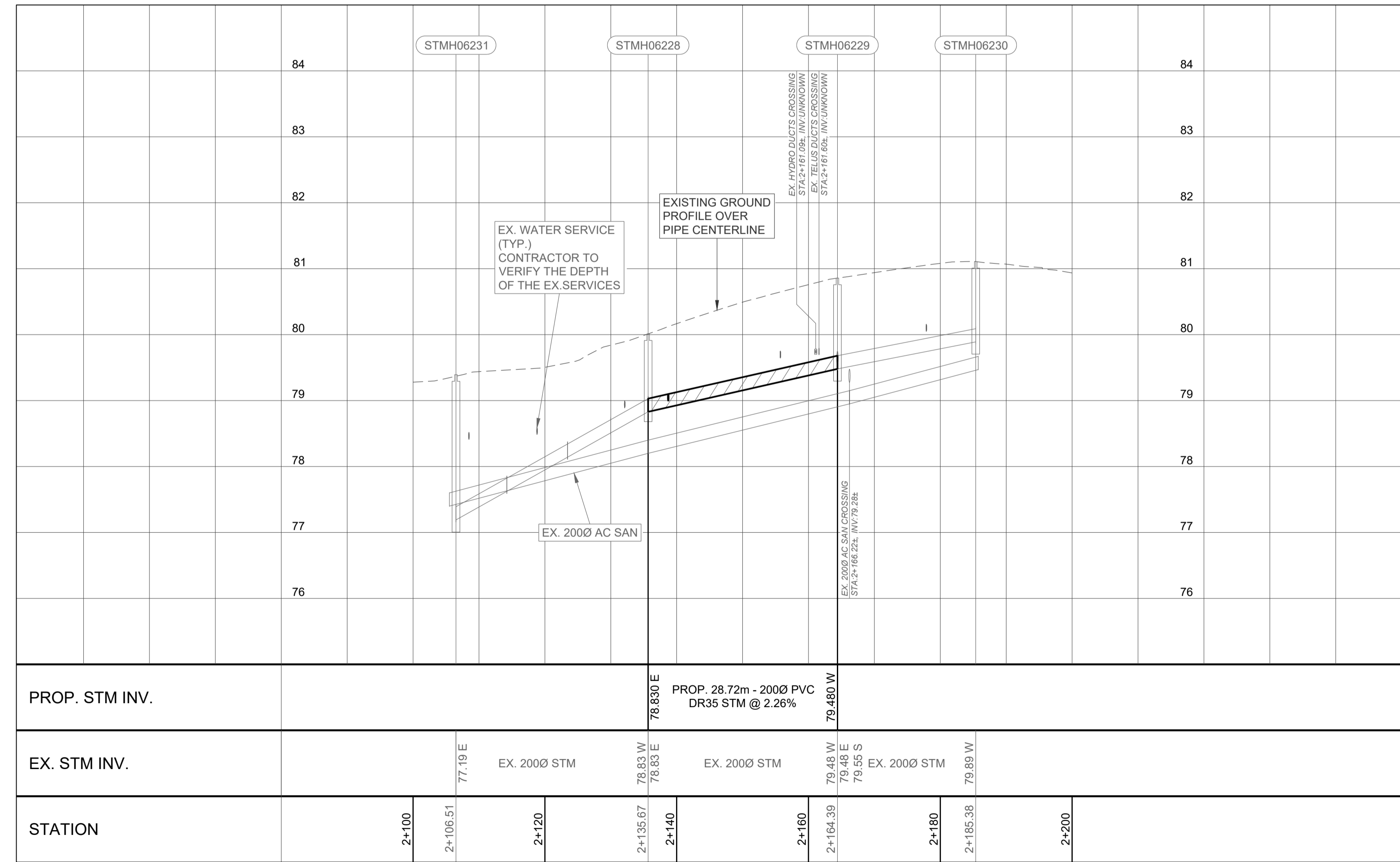
- STORM SEWER SHALL BE CONSTRUCTED TO MMCD 2000 EDITION AND CITY OF COQUITLAM SUPPLEMENTARY SPECIFICATIONS.
- STORM SEWER SHALL BE POLYVINYL CHLORIDE (PVC) WITH A MINIMUM SDR35 SPECIFICATION UNLESS OTHERWISE NOTED. ALTERNATIVELY, WITH PRE-APPROVAL, NON-REINFORCED CONCRETE PIPES CONFORMING TO ASTM DESIGNATION C-14 CLASS 3 OR REINFORCED CONCRETE PIPES CONFORMING TO ASTM C-76 CLASS 3.
- THE MINIMUM COVER OF THE PROPOSED STORM SEWER SHALL BE 1.0 METRE.
- THE MAXIMUM GRADE SHALL BE 15.0% UNLESS PROVISIONS ARE MADE TO ANCHOR THE PIPE TO THE BOTTOM OF THE TRENCH WITH CONCRETE POURED IN PLACE. PIPE ANCHORS ARE TO BE INSTALLED AS PER MMCD STANDARD DRAWING NO. G8.
- STORM SERVICE CONNECTIONS SHALL BE MINIMUM 150mm DIAMETER PVC PIPE WITH SDR 28 SPECIFICATION UNLESS NOTED OTHERWISE. STORM SERVICE CONNECTIONS SHALL BE INSTALLED FROM THE MAIN TO THE PROPERTY LINE AT A MINIMUM GRADE OF 2.0% PER MMCD STANDARD DRAWING S8 UNLESS NOTED OTHERWISE. ALL SERVICES SHALL ENTER THE MAIN AT A POINT JUST ABOVE THE SPRINGLINE. CONNECTIONS TO MAINS SHALL BE MADE USING WYE FITTING.
- STORM SERVICE INSPECTION CHAMBERS FOR 150mm TO 200mm STORM SERVICE SHALL BE INSTALLED AS PER THE MMCD STANDARD DRAWING S9.
- ALL WYE FITTINGS SHALL BE MANUFACTURED.
- EXISTING INVERTS SHALL BE VERIFIED BY THE CONTRACTOR PRIOR TO THE COMMENCEMENT OF CONSTRUCTION.
- CONTRACTOR EXPOSES AND VERIFIES ALL UTILITY CROSSINGS AND TIE-IN LOCATIONS, AND NOTIFIES THE CONTRACT ADMINISTRATOR OF ANY DISCREPANCIES PRIOR TO CONSTRUCTION.
- CONTRACTOR REPLACES EXISTING UTILITIES OR ROAD STRUCTURES IF DAMAGED BY CONTRACTOR DURING STORM SEWER REPLACEMENT.
- COMPLETE DRIVEWAY AND SIDEWALK RESTORATION TO SAME AS EXISTING OR BETTER. CONTRACTOR RESTORES EXPOSED GRAVEL, STAMPED, OR SMOOTH CONCRETE WHERE APPLICABLE.
- THE CONTRACTOR SHALL CONTACT THE CITY OF COQUITLAM PRIOR TO THE COMMENCEMENT OF TIE-IN CONNECTION PROCEDURES. TIE-INS AND CONNECTIONS SHALL BE COORDINATED WITH THE CITY OF COQUITLAM. TIE-INS AND CONNECTIONS TO THE EXISTING STORM SEWER SHALL BE PERFORMED BY THE CONTRACTOR UNDER THE SUPERVISION OF THE ENGINEER AND THE CITY OF COQUITLAM. THE CONTRACTOR SHALL EXPOSE THE TIE-IN LOCATIONS AND PROVIDE ALL MATERIALS REQUIRED TO COMPLETE THE TIE-INS.
- THE CONTRACTOR IS TO PROVIDE CCTV CAMERA INSPECTIONS OF ALL INSTALLED STORM SEWERS INCLUDING SERVICE CONNECTIONS, CATCH BASIN AND LAWN BASIN LEADS. CCTV CAMERA INSPECTION HARD COPIES AND DIGITAL FORMAT ARE TO BE PROVIDED IN A FORMAT SATISFACTORY TO THE ENGINEER AND CITY OF COQUITLAM. ALL SEWERS ARE TO BE FLUSHED PRIOR TO CAMERA INSPECTIONS.

**BENCHMARK:**  
SURVEY CONTROL MONUMENT 73H0118. LOCATED IN THE INTERSECTION OF ONEIDA DRIVE AND HURON DRIVE ELEVATION=109.550m, DATUM IS (CGVD28 (GVRD 2018))

CONTRACTOR TO USE EXTREME CAUTION WHEN WORKING IN THE VICINITY OF A RETAINING WALL AND/OR ADJACENT STRUCTURE.  
THE CONTRACTOR IS REQUIRED UNDER PART 20.78 OF THE WORKSAFE BE REGULATIONS TO ENGAGE THE SERVICES OF A QUALIFIED REGISTERED PROFESSIONAL WHEN EXCAVATING ADJACENT TO AN EXISTING STRUCTURE.  
NO WORK IS TO PROCEED IN THE VICINITY OF THE STRUCTURE WITHOUT WRITTEN INSTRUCTIONS FROM THE QUALIFIED REGISTERED PROFESSIONAL AND SUCH COPY SUBMITTED TO THE CIVIL CONSULTANT.



**CORONA CRESCENT**



0 1:500 20m  
0 1:50 2m  
DISCLAIMER: This drawing must not be reproduced without the written permission of R.F. Binnie & Associates Ltd. This drawing is not to be used for construction unless it is stamped "ISSUED FOR CONSTRUCTION" and signed by R.F. Binnie & Associates Ltd. It is the contractor's responsibility to ensure that he is in possession of the latest revision of this drawing.

Edge of pavement	Hydrant	Sanitary service	Hydro Guy Wire
Watermain and valve	Water air valve	Sanitary cleanout	Hydro Kiosk
Drainage sewer, MH	Water blowoff	Utility pole (joint pole)	Vegetation Canister
Drainage ditch	Water service	Utility pole with light	Vegetation Deciduous
Sanitary sewer, MH	Catch basin, top inlet	Streetlight, down	Vegetation Shrub
Sanitary forcemain	Catch basin, side inlet	Streetlight, post top	Survey Traverse Hub
Gasmain and valve	Catch basin, round	Comb signal pole	Survey Iron Pin
Hydro duct, MH	Drainage service	Traffic signal pole	Survey Lead Plug
Telephone duct, MH	Drainage cleanout	Junction box	Survey Monument

No.	Date	By	Revisions
4	2026-04-08	PD	ISSUED FOR TENDER
3	2026-04-01	SV	100% DESIGN SUBMISSION
2	2026-01-23	MK	PRELIMINARY DESIGN RE-SUBMISSION
1	2025-12-12	LY	PRELIMINARY DESIGN SUBMISSION

Design by	Date
LY	
Drawn by	Date
LY	
Checked by	Date
PD	
Approved by	Date
PD	

**BINNIE**  
The people behind your infrastructure.  
TEL 604 420 1721 BINNIE.com

**Coquitlam**  
Engineering & Public Works  
3000 Guildford Way, Coquitlam, B.C. V3B 7N2

Scale 1:500 Scale 1:50  
horiz. Sheet 03 of 03  
Eng. Project No. 25-0822

Project CORONA CRESCENT  
#1048 TO #1044 CORONA CRESCENT  
Description STORM MAIN - PLAN & PROFILE  
File: 25-0822-D1  
REV. 4



EGBC PERMIT No. 1001128

**NOT FOR CONSTRUCTION**