



# Schedule B: Land Use

Includes the Citywide land use designations map and Height Map.

B-1 Land Use Designation Map

B-2 Height Map

B-3 Areas Supporting Intensive Small-Scale Residential Development

**Bylaw 5511, 2026**

**Schedule B**

**Original Adoption April 27, 2026**

# Schedule B-1: Land Use Designation Map

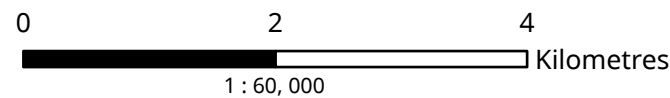
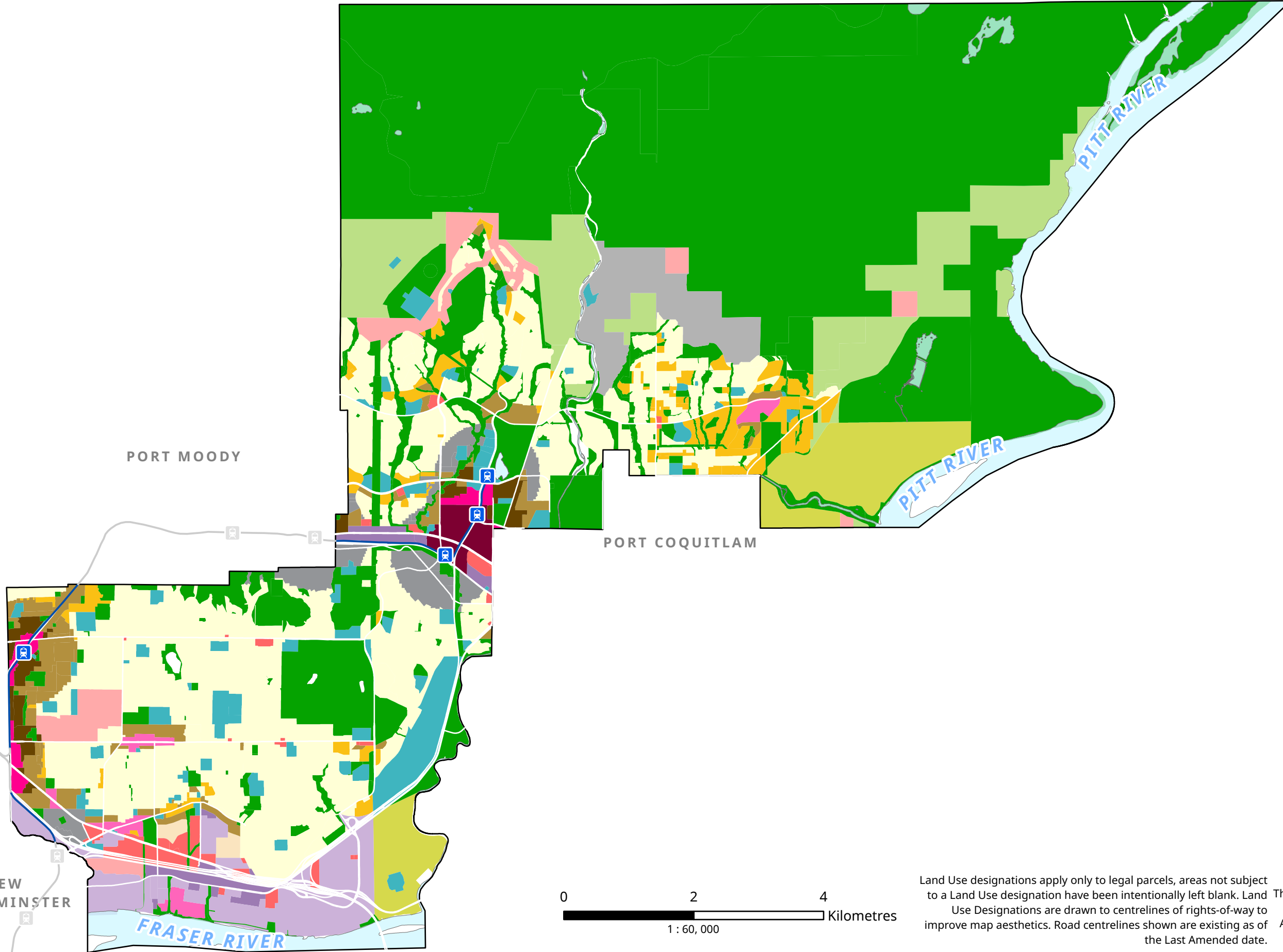


## Legend

- City Boundary
- SkyTrain Line (Within Coquitlam)
- SkyTrain Line (Outside Coquitlam)
- SkyTrain Line (Within Coquitlam)
- SkyTrain Line (Outside Coquitlam)

## Land Use Classification

- Agricultural
- Rural
- Mobile Home Park
- Small-Scale Residential
- Townhouse Residential
- Medium-Density Residential
- High-Density Residential
- Neighbourhood Centre
- Transit-Oriented Mixed-Use
- City Centre
- Institutional
- Commercial
- Commercial Recreation
- Business Enterprise
- Industrial
- Park and Recreation
- Development Reserve
- Transit-Oriented Area Reserve



Land Use designations apply only to legal parcels, areas not subject to a Land Use designation have been intentionally left blank. Land Use Designations are drawn to centrelines of rights-of-way to improve map aesthetics. Road centrelines shown are existing as of the Last Amended date.





Date Adopted: April 27, 2026  
 Bylaw No: 5511, 2026  
 Datum: UTM NAD1983

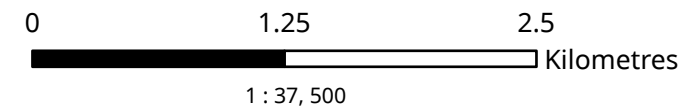
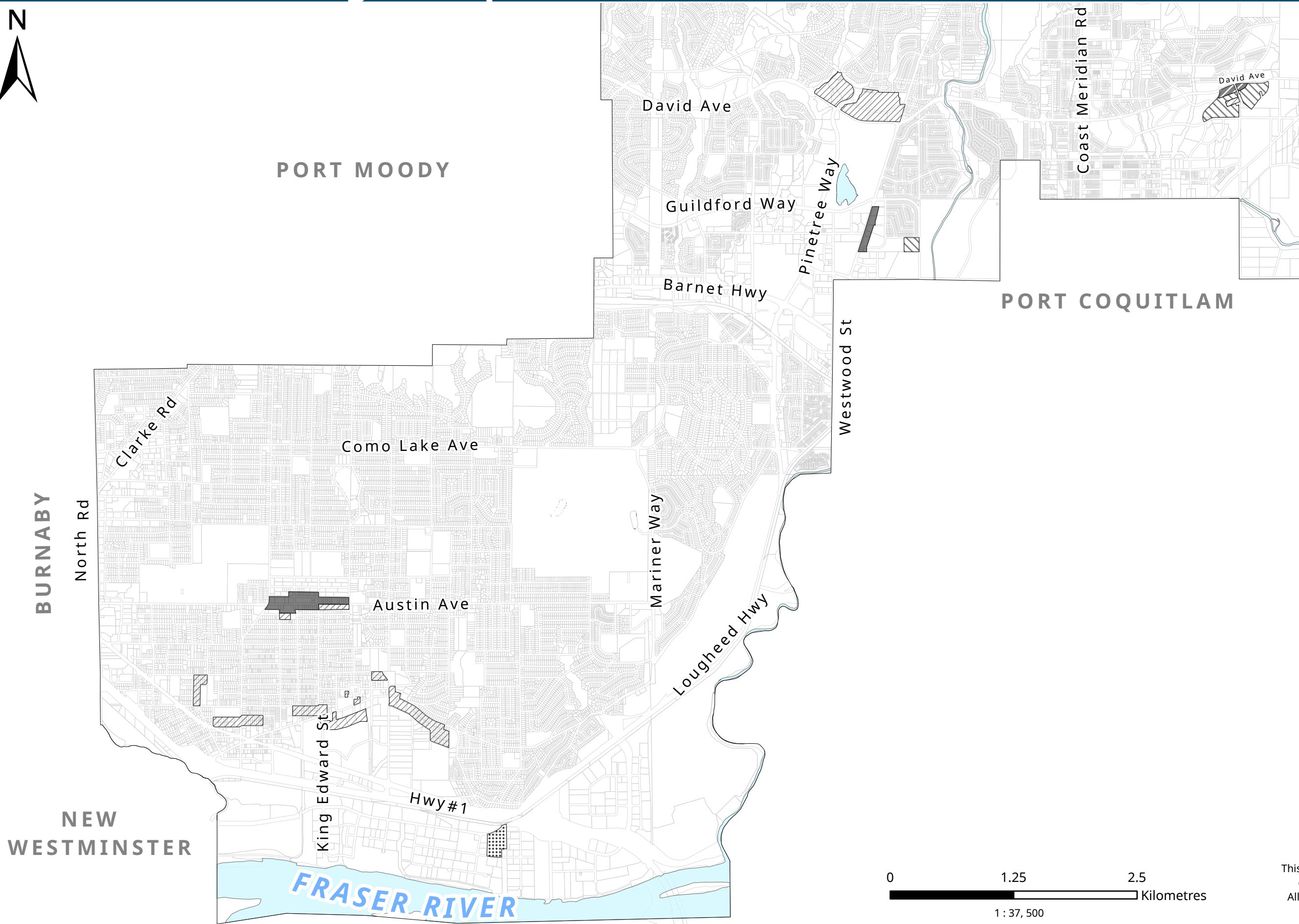
This map is for general information only. The City of Coquitlam does not guarantee its accuracy. All information should be verified with the City's Planning and Development Department.

# Schedule B-2: Height Map



## Legend

-  City Boundary
-  Water Bodies
-  Parcels
- Max Heights**
-  4 Storeys
-  6 Storeys
-  10 Storeys
-  25 Storeys
-  55 Metres



Date Adopted: April 27, 2026  
 Bylaw No: 5511, 2026  
 Datum: UTM NAD1983

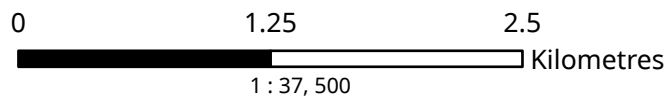
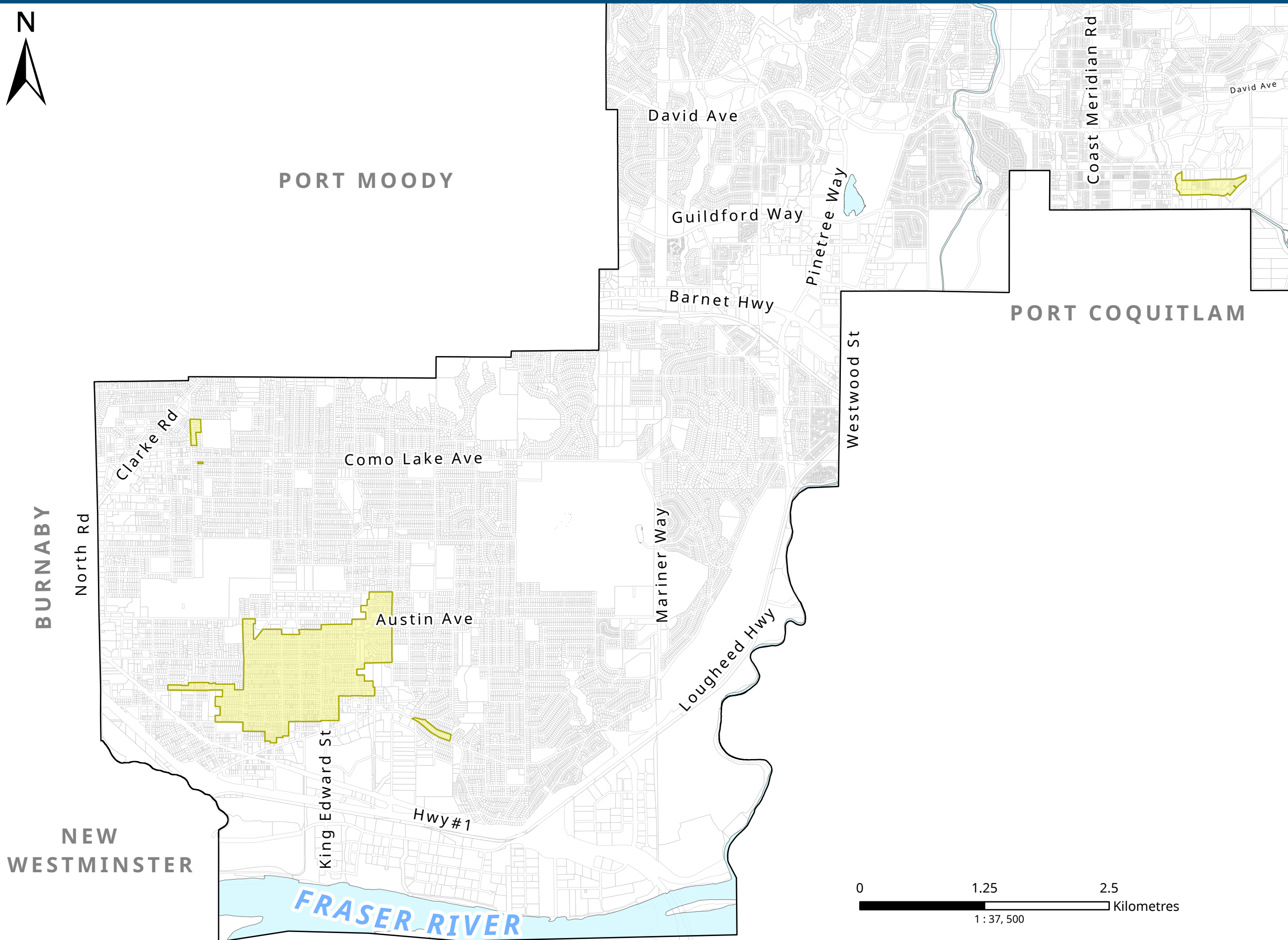
This map is for general information only. The City of Coquitlam does not guarantee its accuracy. All information should be verified with the City's Planning and Development Department.

# Schedule B-3: Areas Supporting Intensive Small-Scale Residential Development



## Legend

- City Boundary
- Water Bodies
- Parcels
- Areas Supporting Intensive Small-Scale Residential



Date Adopted: April 27, 2026  
Bylaw No: 5511, 2026  
Datum: UTM NAD1983

This map is for general information only. The City of Coquitlam does not guarantee its accuracy. All information should be verified with the City's Planning and Development Department.