



Schedule D: Infrastructure

Maps showing existing sanitary, water, and drainage mains, major transportation infrastructure, as well as future major infrastructure projects.

D-1 Sanitary Map

D-2 Water Map

D-3 Drainage Map

D-4 Transportation Map

Bylaw 5511, 2026

Schedule D

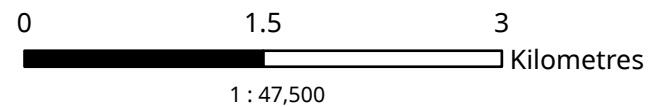
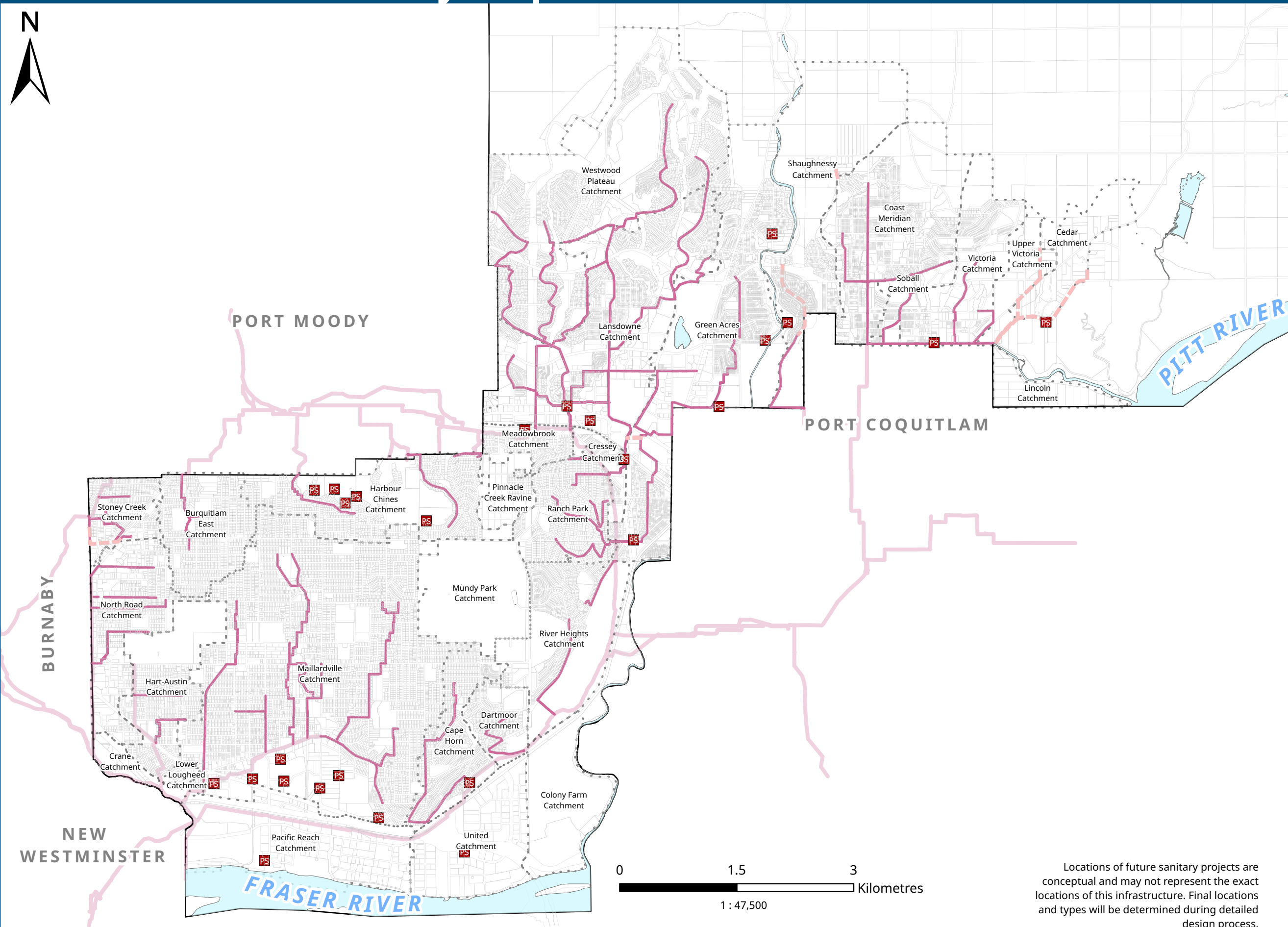
Original Adoption April 27, 2026

Schedule D-1: Sanitary Map



Legend

- City Boundary
- Water Bodies
- Existing Sanitary Utilities**
 - Sanitary Pump Stations
 - Sanitary Catchment Boundary
 - Sanitary Trunk Mains
 - Metro Vancouver Sanitary Trunks
- Future Sanitary Projects**
 - Sanitary Utility Projects



Locations of future sanitary projects are conceptual and may not represent the exact locations of this infrastructure. Final locations and types will be determined during detailed design process.

Date Adopted: April 27, 2026
Bylaw No: 5511, 2026
Datum: UTM NAD1983

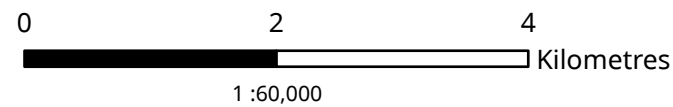
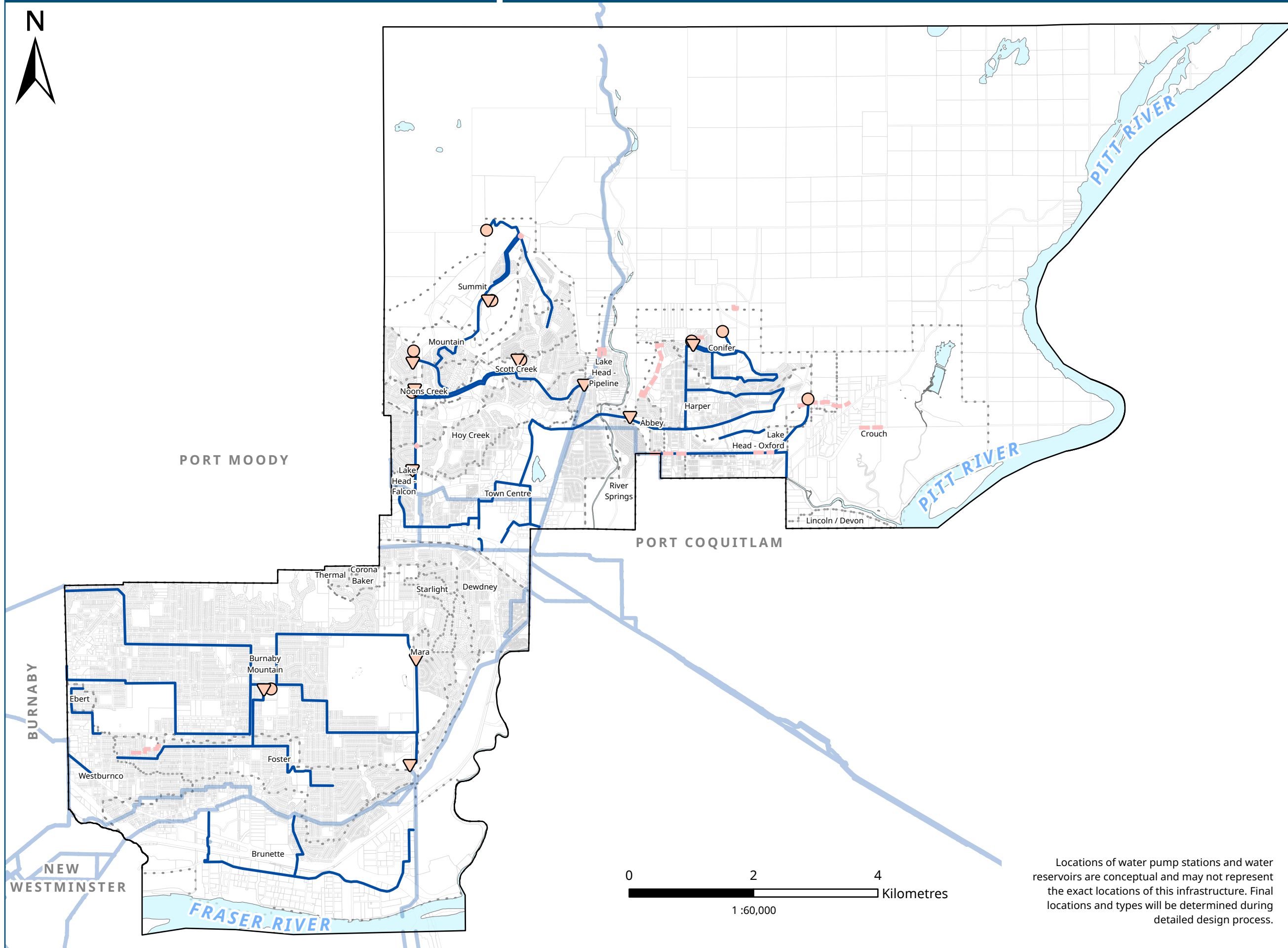
This map is for general information only. The City of Coquitlam does not guarantee its accuracy. All information should be verified with the City's Planning and Development Department.

Schedule D-2: Water Map



Legend

- City Boundary
- Water Bodies
- Existing Water Utilities**
- ▽ Water Pump Station
- Water Reservoir
- ⋯ Water Pressure Zone Boundaries
- Water Mains
- Metro Vancouver Water Mains
- Future Water Utilities**
- - - Water Utility Projects



Locations of water pump stations and water reservoirs are conceptual and may not represent the exact locations of this infrastructure. Final locations and types will be determined during detailed design process.

Date Adopted: April 27, 2026
 Bylaw No: 5511, 2026
 Datum: UTM NAD1983

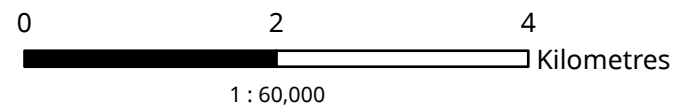
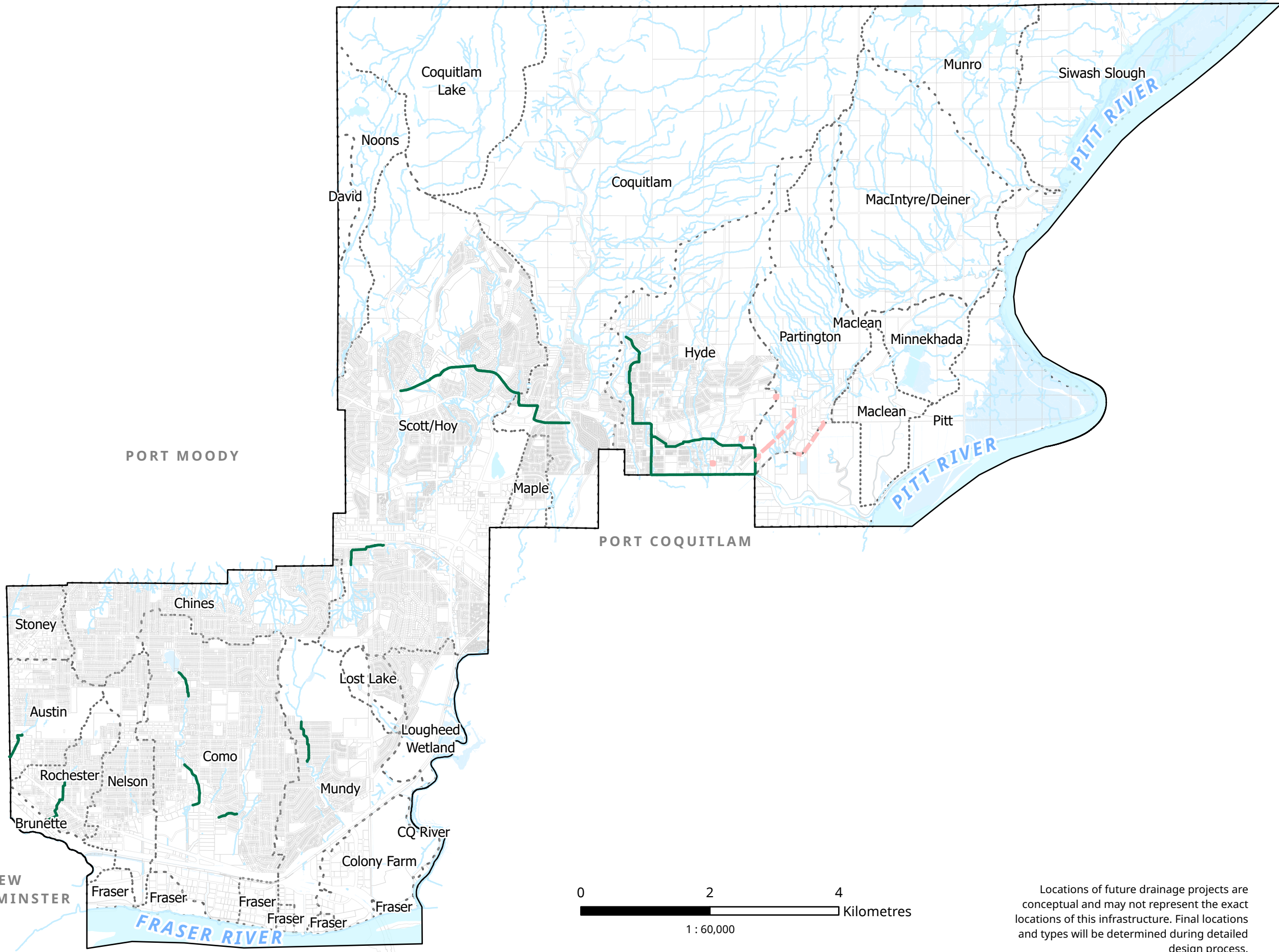
This map is for general information only. The City of Coquitlam does not guarantee its accuracy. All information should be verified with the City's Planning and Development Department.

Schedule D-3: Drainage Map



Legend

- City Boundary
- Water Bodies
- Watercourses
- Existing Drainage Utilities**
- Drainage Mains
- Drainage Watershed Boundaries
- Future Drainage Projects**
- Drainage Utility Projects



Locations of future drainage projects are conceptual and may not represent the exact locations of this infrastructure. Final locations and types will be determined during detailed design process.

Date Adopted: April 27, 2026
Bylaw No: 5511, 2026
Datum: UTM NAD1983

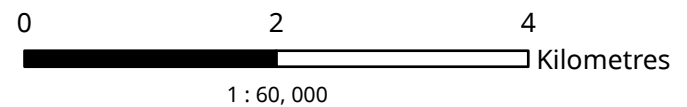
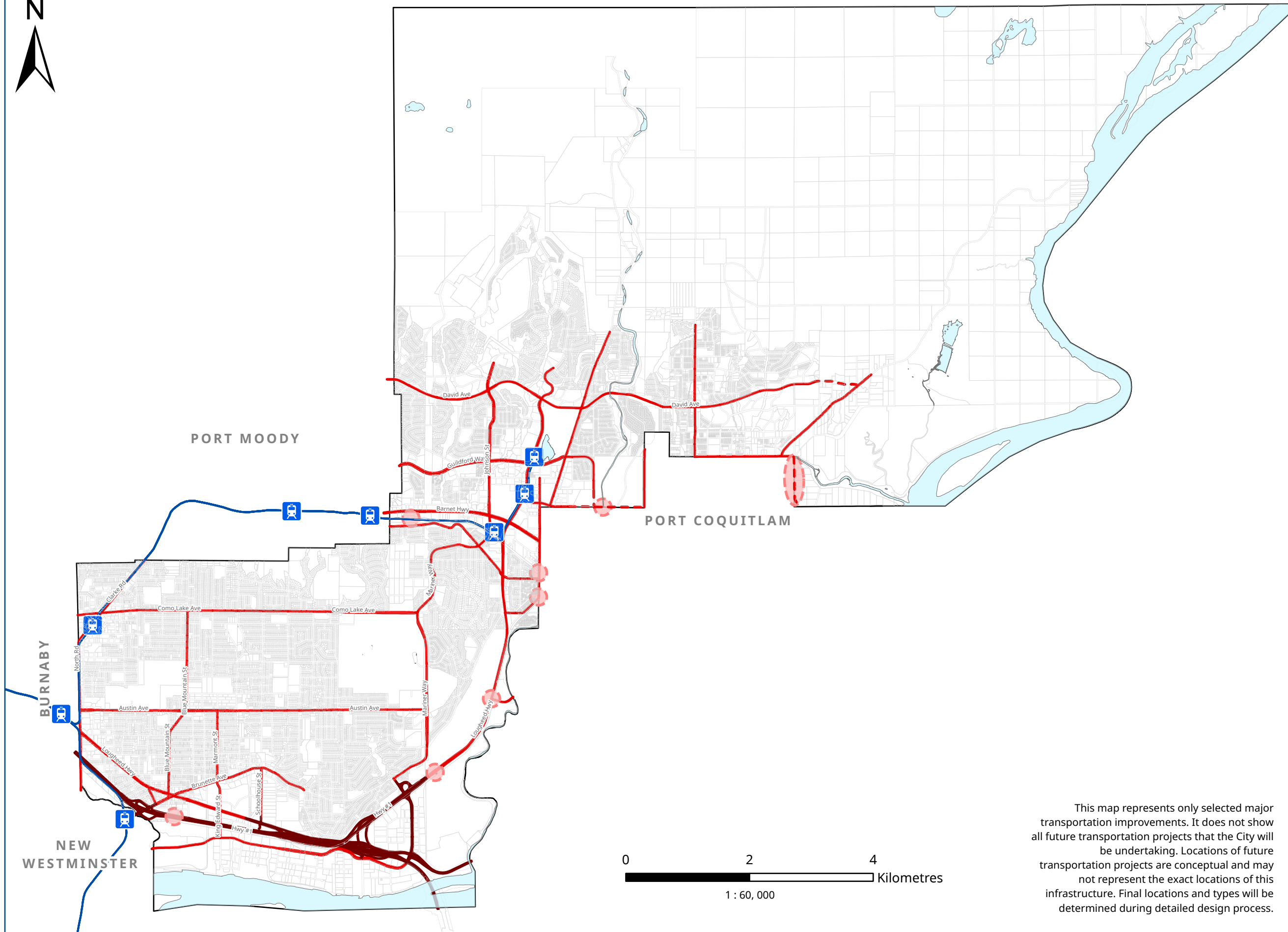
This map is for general information only. The City of Coquitlam does not guarantee its accuracy. All information should be verified with the City's Planning and Development Department.

Schedule D-4: Transportation Map



Legend

-  City Boundary
-  Water Bodies
-  SkyTrain Station
-  SkyTrain Line
- Existing Streets**
-  Arterials
-  Highways
- Future Projects**
-  Future Streets
-  Major Transportation Improvements



This map represents only selected major transportation improvements. It does not show all future transportation projects that the City will be undertaking. Locations of future transportation projects are conceptual and may not represent the exact locations of this infrastructure. Final locations and types will be determined during detailed design process.

Date Adopted: April 27, 2026
Bylaw No: 5511, 2026
Datum: UTM NAD1983

This map is for general information only. The City of Coquitlam does not guarantee its accuracy. All information should be verified with the City's Planning and Development Department.