

PERMIT NO. 20 115865 UP

Our file: 09-4500-35/20 115865 UP Doc #: 3834931.v1

APPLICANT	
Name: FORTIS BC, Ronil Perera	Date of Application: 17/09/2020
Address: 3700 2ND AVENUE BURNABY BC V5C 6S4	
Phone: (604) 468-1064	

ROCKLIN ST & BURKE VILLAGE PROM.

CONTRACTOR	
Name: FORTIS BC	
Address: 3700 2ND AVENUE BURNABY BC V5C 6S4	
Phone: (604) 468-1064	

Type	Utility	Drawing #
Utility	Gas	MCO 4110358901

PERMISSION IS GRANTED TO:

Construct Gas as per drawing # MCO 4110358901 submitted 17/09/2020.

Authority / Mandate for issuance of permit:

Utility Regulation By-Law No. 707 (1977)

Record drawings required: Yes

Inspection required: Yes

For inspection please call: Jim Roulette at 604-603-6232

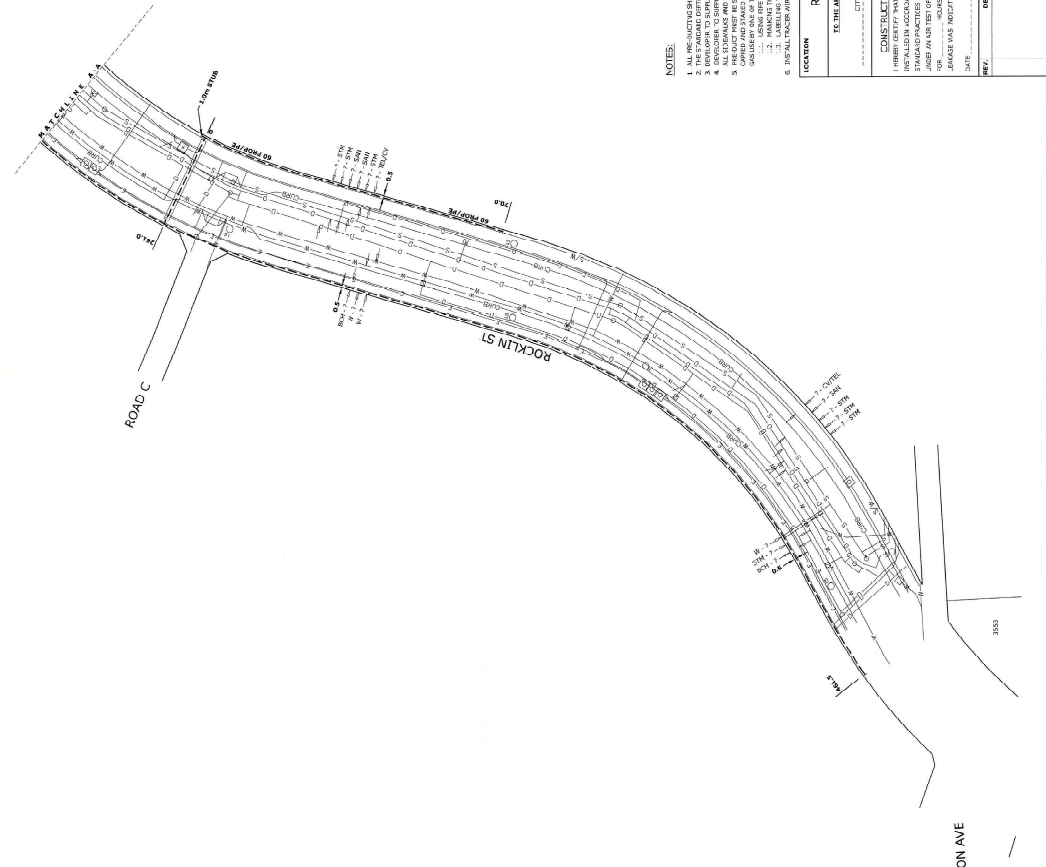
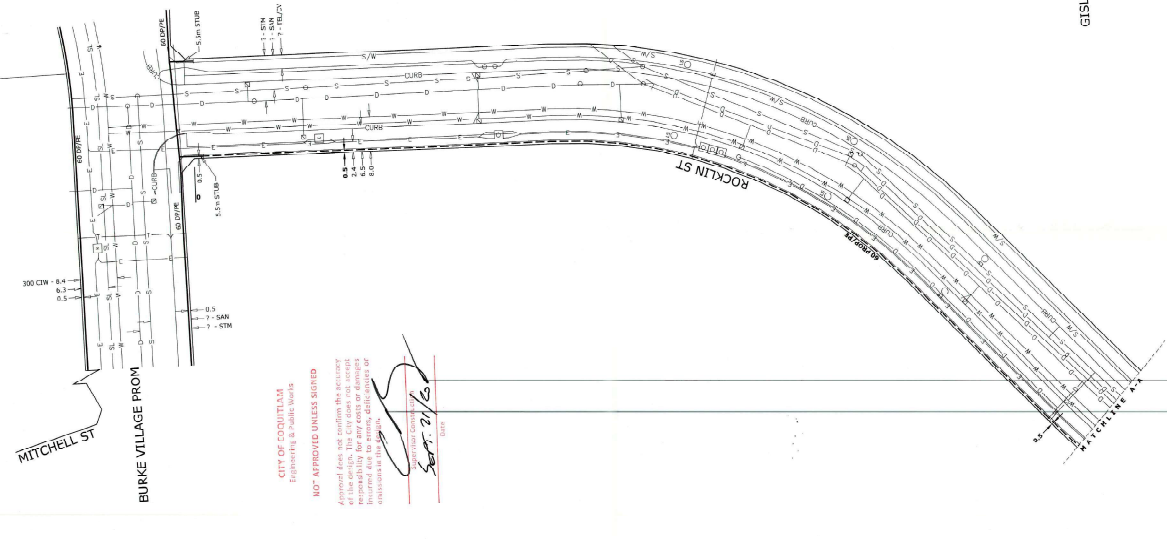
Comments: Approved.

Date: Sept. 21/20

Signature: 
 (For the General Manager –
Engineering & Public Works)
 Approved by: Chad Braley

All work must be completed in accordance with all current City adopted standards, specifications, and regulations. Contractor(s) is responsible for field verification of all existing utility locations.

**** Call BC One Call at least two full working days before you dig at 604-257-1940. ****



SPP NOTIFICATION / PROJECT No. 4110358901
 ECONOMIC TEST No. 559062415

NOTES:

1. ALL PROJECTS SHALL BE INSTALLED WITH A MINIMUM COVER OF 8" R/C.
2. THE CONTRACTOR SHALL BE RESPONSIBLE FOR OBTAINING ALL NECESSARY PERMITS AND APPROVALS FROM ALL AFFECTED AGENCIES.
3. THE CONTRACTOR SHALL BE RESPONSIBLE FOR OBTAINING ALL NECESSARY PERMITS AND APPROVALS FROM ALL AFFECTED AGENCIES.
4. ALL EXPOSURES AND EXCAVATIONS SHALL BE PROTECTED BY FENCING, FLAGGING AND LIGHTS.
5. ALL EXPOSURES AND EXCAVATIONS SHALL BE PROTECTED BY FENCING, FLAGGING AND LIGHTS.
6. THE CONTRACTOR SHALL BE RESPONSIBLE FOR OBTAINING ALL NECESSARY PERMITS AND APPROVALS FROM ALL AFFECTED AGENCIES.

LOCATION: Rocklin St & Burke Village Prom, COQUITAM

DATE: _____

AUTHORIZATION NUMBER OR SIGNATURE: _____

CITY OF COQUITAM

CONSULTATION REPORT:

1. REVIEWED THE PROJECT AND FOUND IT TO BE IN ACCORDANCE WITH THE CITY OF COQUITAM STANDARD PRACTICES AND ALL APPLICABLE REGULATIONS.

2. THE PROJECT SHALL BE INSTALLED WITH A MINIMUM COVER OF 8" R/C.

3. THE CONTRACTOR SHALL BE RESPONSIBLE FOR OBTAINING ALL NECESSARY PERMITS AND APPROVALS FROM ALL AFFECTED AGENCIES.

4. ALL EXPOSURES AND EXCAVATIONS SHALL BE PROTECTED BY FENCING, FLAGGING AND LIGHTS.

5. THE CONTRACTOR SHALL BE RESPONSIBLE FOR OBTAINING ALL NECESSARY PERMITS AND APPROVALS FROM ALL AFFECTED AGENCIES.

6. THE CONTRACTOR SHALL BE RESPONSIBLE FOR OBTAINING ALL NECESSARY PERMITS AND APPROVALS FROM ALL AFFECTED AGENCIES.

NO.	DATE	DESCRIPTION	BY	APPROVED
1	2020/03/17	ISSUED FOR PERMITTING	PLS # 404-489-2564	2020/03/17

CITY OF COQUITAM
 ENGINEER

NOT APPROVED UNLESS SIGNED
 Approved does not constitute the accuracy of the work. The City does not accept responsibility for errors, omissions or other consequences that may result from the use of this work.

[Signature]
 DATE: 2/1/20

NO.	DATE	DESCRIPTION	BY	APPROVED
1	2020/03/17	ISSUED FOR PERMITTING	PLS # 404-489-2564	2020/03/17

DATE APPROVED: 2020/03/17

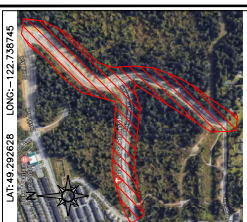
SCALE IN METERS: 1:200

PROPOSED WORKMAN: _____

DATE OF WORK: _____

PROPOSED WORKMAN: _____

NO.	DATE	DESCRIPTION	BY	APPROVED
1	2020/03/17	ISSUED FOR PERMITTING	PLS # 404-489-2564	2020/03/17



WORK LOCATION N.T.S.
 BC ONE CALL
 CALL BEFORE YOU DIG
 1-800-474-6888
 ALL WORKING DAYS BEFORE
 YOUR PLAN TO DIG
 CIVIL ONE CALL

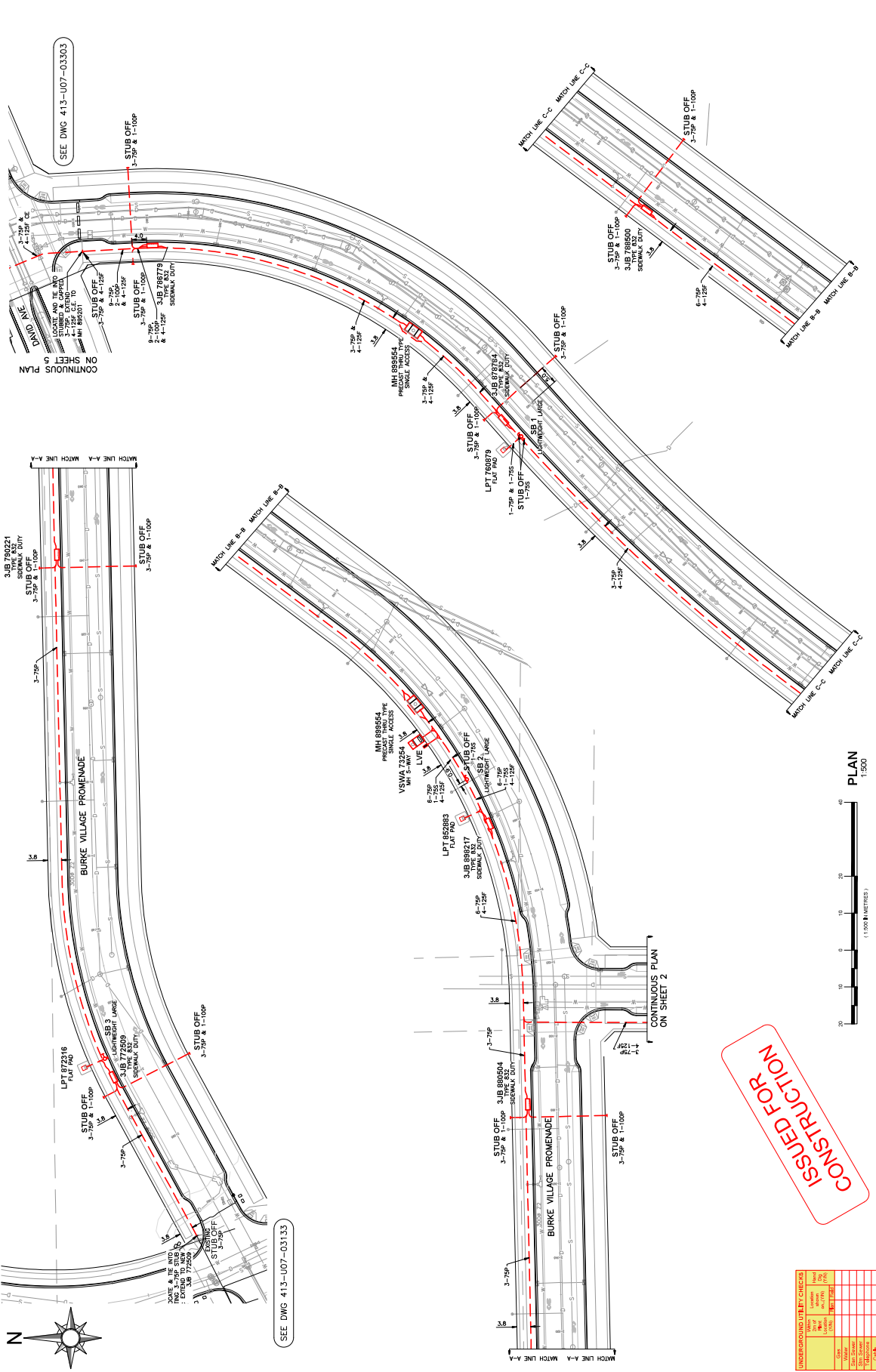
- BE HYDRO UNDERGROUND CIVIL INSPECTOR MUST VERIFY ALL UTILITIES SHOWN TO CONSTRUCTION WITH A LIST OF WORK REGULATIONS, L22 AND 254. ENGINEERING STRATEGIES, SERVICES, ESDS AND ESHA.
- ALL HYDRO CIVIL INSPECTOR MUST VERIFY ALL UTILITIES SHOWN TO CONSTRUCTION WITH A LIST OF WORK REGULATIONS, L22 AND 254. ENGINEERING STRATEGIES, SERVICES, ESDS AND ESHA.
- ALL HYDRO CIVIL INSPECTOR MUST VERIFY ALL UTILITIES SHOWN TO CONSTRUCTION WITH A LIST OF WORK REGULATIONS, L22 AND 254. ENGINEERING STRATEGIES, SERVICES, ESDS AND ESHA.
- ALL HYDRO CIVIL INSPECTOR MUST VERIFY ALL UTILITIES SHOWN TO CONSTRUCTION WITH A LIST OF WORK REGULATIONS, L22 AND 254. ENGINEERING STRATEGIES, SERVICES, ESDS AND ESHA.
- ALL HYDRO CIVIL INSPECTOR MUST VERIFY ALL UTILITIES SHOWN TO CONSTRUCTION WITH A LIST OF WORK REGULATIONS, L22 AND 254. ENGINEERING STRATEGIES, SERVICES, ESDS AND ESHA.
- ALL HYDRO CIVIL INSPECTOR MUST VERIFY ALL UTILITIES SHOWN TO CONSTRUCTION WITH A LIST OF WORK REGULATIONS, L22 AND 254. ENGINEERING STRATEGIES, SERVICES, ESDS AND ESHA.
- ALL HYDRO CIVIL INSPECTOR MUST VERIFY ALL UTILITIES SHOWN TO CONSTRUCTION WITH A LIST OF WORK REGULATIONS, L22 AND 254. ENGINEERING STRATEGIES, SERVICES, ESDS AND ESHA.
- ALL HYDRO CIVIL INSPECTOR MUST VERIFY ALL UTILITIES SHOWN TO CONSTRUCTION WITH A LIST OF WORK REGULATIONS, L22 AND 254. ENGINEERING STRATEGIES, SERVICES, ESDS AND ESHA.
- ALL HYDRO CIVIL INSPECTOR MUST VERIFY ALL UTILITIES SHOWN TO CONSTRUCTION WITH A LIST OF WORK REGULATIONS, L22 AND 254. ENGINEERING STRATEGIES, SERVICES, ESDS AND ESHA.
- ALL HYDRO CIVIL INSPECTOR MUST VERIFY ALL UTILITIES SHOWN TO CONSTRUCTION WITH A LIST OF WORK REGULATIONS, L22 AND 254. ENGINEERING STRATEGIES, SERVICES, ESDS AND ESHA.
- ALL HYDRO CIVIL INSPECTOR MUST VERIFY ALL UTILITIES SHOWN TO CONSTRUCTION WITH A LIST OF WORK REGULATIONS, L22 AND 254. ENGINEERING STRATEGIES, SERVICES, ESDS AND ESHA.
- ALL HYDRO CIVIL INSPECTOR MUST VERIFY ALL UTILITIES SHOWN TO CONSTRUCTION WITH A LIST OF WORK REGULATIONS, L22 AND 254. ENGINEERING STRATEGIES, SERVICES, ESDS AND ESHA.
- ALL HYDRO CIVIL INSPECTOR MUST VERIFY ALL UTILITIES SHOWN TO CONSTRUCTION WITH A LIST OF WORK REGULATIONS, L22 AND 254. ENGINEERING STRATEGIES, SERVICES, ESDS AND ESHA.
- ALL HYDRO CIVIL INSPECTOR MUST VERIFY ALL UTILITIES SHOWN TO CONSTRUCTION WITH A LIST OF WORK REGULATIONS, L22 AND 254. ENGINEERING STRATEGIES, SERVICES, ESDS AND ESHA.
- ALL HYDRO CIVIL INSPECTOR MUST VERIFY ALL UTILITIES SHOWN TO CONSTRUCTION WITH A LIST OF WORK REGULATIONS, L22 AND 254. ENGINEERING STRATEGIES, SERVICES, ESDS AND ESHA.

CUSTOM NOTES HERE IF REQUIRED

- CIVIL PLAN LEGEND:**
- EXISTING DUCT
 - - - - - FIELD COMPLETED DUCT
 - SERVICE BOX
 - TERMINAL POLE
 - TRANSFORMER
 - LOW PROFILE TRANSFORMER (LPT)
 - (LPT-PRIMARY PAD)
 - 24" & 18" JUNCTION & PULL BOXES
 - (252, 532, 532 & 132)
 - VESA SWITCH SUBASSEMBLY (VESA)
 - VESA SWITCH ABOVE GROUND (VESA)
 - REFER TO ESDS AND ESDS UNDERGROUND STANDARDS

CSA S250 ACCURACY INAD 83 - 10 UTM
 BASE ACCURACY LEVEL 4 +/- 1000 mm
 ASB ACCURACY LEVEL 4 +/- 1000 mm

BC Hydro T&D ENGINEERING & DESIGN
LMN - COQUITLAM - MAPLE RIDGE
 COQUITLAM DISTRICT OFFICE
 UNDERGROUND DUCT AND STRUCTURES FOR
 ROCKLIN & BURKE VILLAGE BLVD
 COQUITLAM
 DWG NO 413-U07-03425
 SHEET 1 OF 10
 DATE



NO	DATE	DESIGNED	CHECKED	INSP	APP	REV	ACFT
1	2019-03-08	MSB/PAK	SC	AC			
2	2019-04-15	MSB/PAK	EH	AC			
3							
4							
5							

NO	DATE	DESIGNED	CHECKED	INSP	APP	REV	ACFT
1	2019-03-08	MSB/PAK	SC	AC			
2	2019-04-15	MSB/PAK	EH	AC			
3							
4							
5							

NO	DATE	DESIGNED	CHECKED	INSP	APP	REV	ACFT
1	2019-03-08	MSB/PAK	SC	AC			
2	2019-04-15	MSB/PAK	EH	AC			
3							
4							
5							

NO	DATE	DESIGNED	CHECKED	INSP	APP	REV	ACFT
1	2019-03-08	MSB/PAK	SC	AC			
2	2019-04-15	MSB/PAK	EH	AC			
3							
4							
5							

NO	DATE	DESIGNED	CHECKED	INSP	APP	REV	ACFT
1	2019-03-08	MSB/PAK	SC	AC			
2	2019-04-15	MSB/PAK	EH	AC			
3							
4							
5							

NO	DATE	DESIGNED	CHECKED	INSP	APP	REV	ACFT
1	2019-03-08	MSB/PAK	SC	AC			
2	2019-04-15	MSB/PAK	EH	AC			
3							
4							
5							

NO	DATE	DESIGNED	CHECKED	INSP	APP	REV	ACFT
1	2019-03-08	MSB/PAK	SC	AC			
2	2019-04-15	MSB/PAK	EH	AC			
3							
4							
5							

NO	DATE	DESIGNED	CHECKED	INSP	APP	REV	ACFT
1	2019-03-08	MSB/PAK	SC	AC			
2	2019-04-15	MSB/PAK	EH	AC			
3							
4							
5							

DISCLAIMER
 THE INFORMATION CONTAINED HEREIN IS THE PROPERTY OF BC HYDRO AND IS NOT TO BE REPRODUCED OR TRANSMITTED IN ANY FORM OR BY ANY MEANS, ELECTRONIC OR MECHANICAL, INCLUDING PHOTOCOPYING, RECORDING, OR BY ANY INFORMATION STORAGE AND RETRIEVAL SYSTEM, WITHOUT THE WRITTEN PERMISSION OF BC HYDRO. THE INFORMATION CONTAINED HEREIN IS PROVIDED AS IS AND WITHOUT WARRANTY OF ANY KIND, EXPRESS OR IMPLIED, INCLUDING BUT NOT LIMITED TO THE WARRANTIES OF MERCHANTABILITY, FITNESS FOR A PARTICULAR PURPOSE, AND NONINFRINGEMENT OF THIRD PARTY RIGHTS. THE USER ASSUMES ALL LIABILITY FOR ANY DAMAGE OR LOSS OF PROFITS OR BUSINESS OPERATIONS ARISING FROM THE USE OF THE INFORMATION CONTAINED HEREIN.

ISSUED FOR CONSTRUCTION

DISCLAIMER
 THIS DRAWING IS THE PROPERTY OF BC HYDRO AND IS NOT TO BE REPRODUCED WITHOUT THE PERMISSION OF BC HYDRO.
 THE INFORMATION CONTAINED HEREIN IS FOR INFORMATION ONLY AND IS NOT TO BE USED FOR ANY OTHER PURPOSE.
 THE INFORMATION CONTAINED HEREIN IS NOT TO BE USED FOR ANY OTHER PURPOSE.
 THE INFORMATION CONTAINED HEREIN IS NOT TO BE USED FOR ANY OTHER PURPOSE.

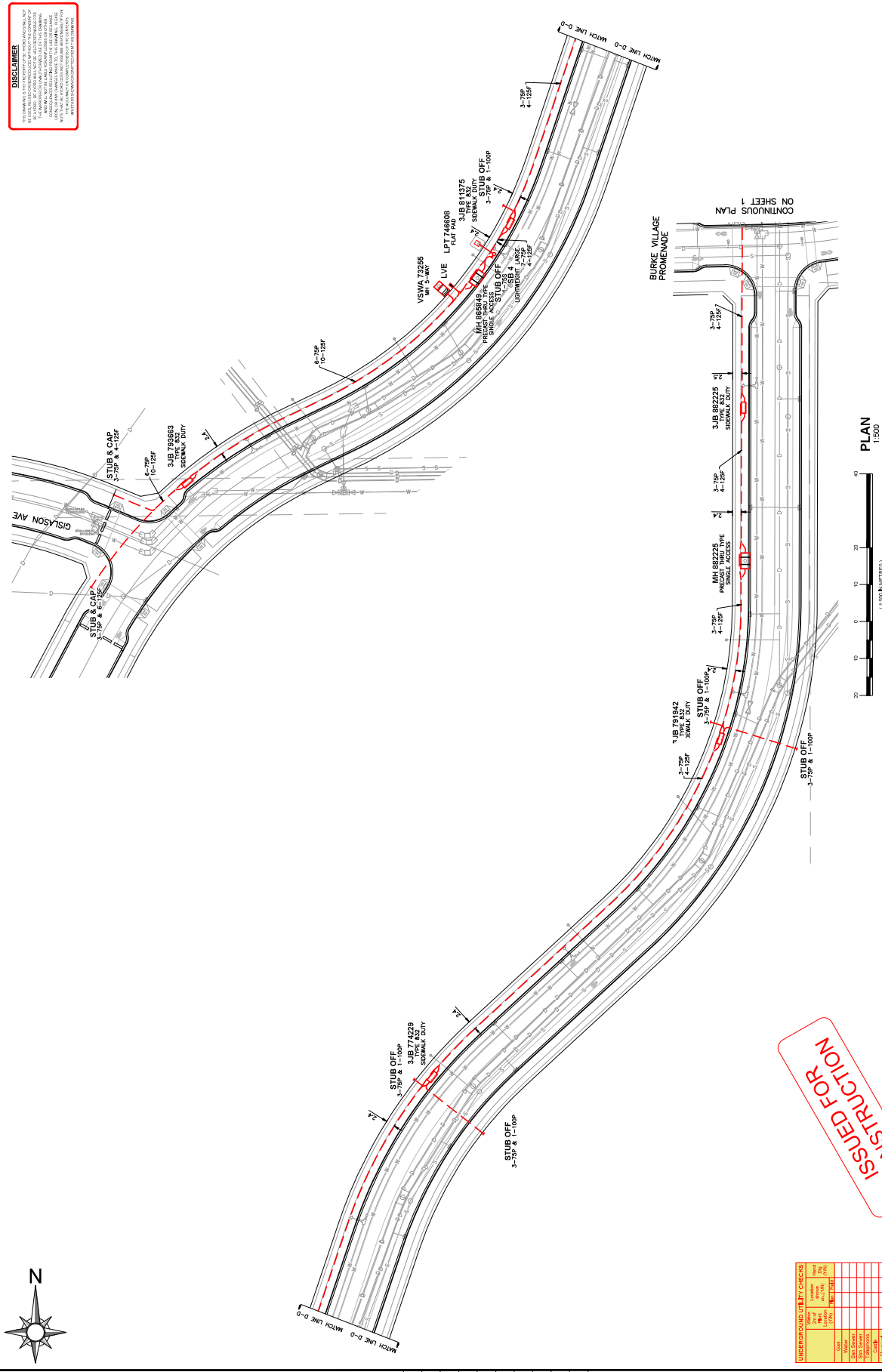


WORK LOCATION N.I.S.
 BC ONE CALL
 CALL BEFORE YOU DIG
 1-800-474-8888
 WORKING DAYS BEFORE
 08:00 AM TO 12:00 PM



- CIVIL PLAN LEGEND:**
- EXISTING DUCT
 - FIELD COMPLETED DUCT
 - SERVICE BOX
 - TERMINAL POLE
 - TRANSFORMER
 - LOW PROFILE TRANSFORMER (LPT)
 - CUT-PRIME PAD
 - 24" & 18" JUNCTION & PULL BOXES
 - 1000, 600, 450 & 300
 - VESA SWITCH SUBMOUNTABLE (VSS)
 - VESA SWITCH ABOVE GROUND (VSA)
- REFERS TO ESS3 AND ESS4 UNDERGROUND STANDARDS
- CSA S250 ACCURACY INAD 83 - 10 UTM
 BASE ACCURACY LEVEL 4 +/- 1000 mm
 ASB ACCURACY LEVEL 4 +/- 1000 mm

CUSTOM NOTES HERE IF REQUIRED



NO.	DATE	BY	CHK	REV	ACFT
1	2018-03-08	JCH	JCH		
2	2018-04-15	JCH	JCH		

BC Hydro T&D ENGINEERING & DESIGN
 LMN - COQUITLAM - MAPLE RIDGE
 COQUITLAM DISTRICT OFFICE
 UNDERGROUND DUCT AND STRUCTURES FOR
 ROCKLIN & BURKE VILLAGE BLVD
 COQUITLAM
 DRAW NO 413-U07-03425
 SHEET 2 OF 10
 NOT TO BE REPRODUCED WITHOUT THE PERMISSION OF BC HYDRO

NO.	DATE	BY	CHK	REV	ACFT
1	2018-03-08	JCH	JCH		
2	2018-04-15	JCH	JCH		

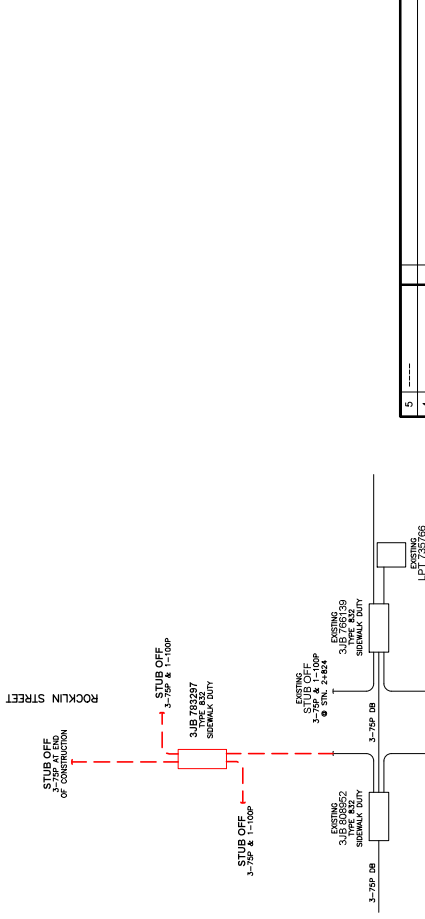
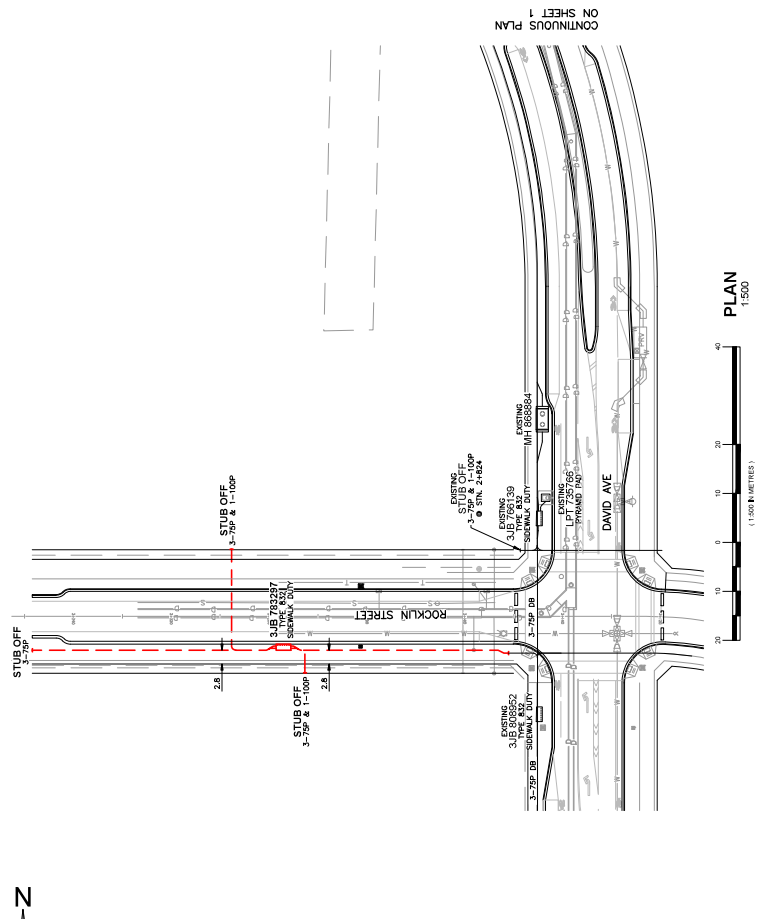
NO.	DATE	BY	CHK	REV	ACFT
1	2018-03-08	JCH	JCH		
2	2018-04-15	JCH	JCH		

NO.	DATE	BY	CHK	REV	ACFT
1	2018-03-08	JCH	JCH		
2	2018-04-15	JCH	JCH		

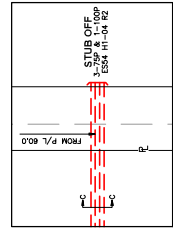
NO.	DATE	BY	CHK	REV	ACFT
1	2018-03-08	JCH	JCH		
2	2018-04-15	JCH	JCH		

ISSUED FOR CONSTRUCTION

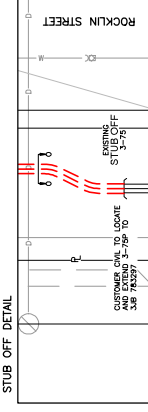
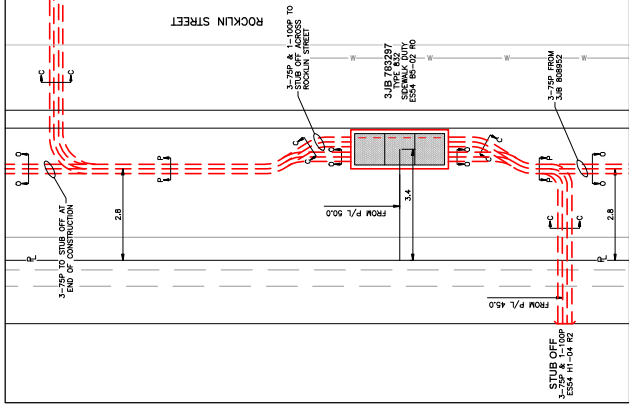
NO.	DATE	BY	CHK	REV	ACFT
1	2018-03-08	JCH	JCH		
2	2018-04-15	JCH	JCH		



DISCLAIMER
 THE INFORMATION CONTAINED HEREIN IS FOR THE EXCLUSIVE USE OF THE CLIENT AND IS NOT TO BE REPRODUCED OR TRANSMITTED IN ANY FORM OR BY ANY MEANS, ELECTRONIC OR MECHANICAL, INCLUDING PHOTOCOPYING, RECORDING, OR BY ANY INFORMATION STORAGE AND RETRIEVAL SYSTEM, WITHOUT THE WRITTEN PERMISSION OF THE ENGINEER. THE ENGINEER'S LIABILITY IS LIMITED TO THE PROFESSIONAL SERVICES PROVIDED BY THE ENGINEER AND DOES NOT INCLUDE THE DESIGN OF ANY STRUCTURES OR EQUIPMENT. THE CLIENT IS RESPONSIBLE FOR OBTAINING ALL NECESSARY PERMITS AND APPROVALS FROM THE APPROPRIATE AGENCIES. THE ENGINEER'S LIABILITY IS LIMITED TO THE PROFESSIONAL SERVICES PROVIDED BY THE ENGINEER AND DOES NOT INCLUDE THE DESIGN OF ANY STRUCTURES OR EQUIPMENT. THE CLIENT IS RESPONSIBLE FOR OBTAINING ALL NECESSARY PERMITS AND APPROVALS FROM THE APPROPRIATE AGENCIES.



3.1B 783287 DETAIL



DETAILS N.T.S.



WORK LOCATION N.T.S.
BC ONE CALL
 CALL BEFORE YOU DIG
 1-800-474-8888
 WORKING DAYS BEFORE
 8:00 AM TO 5:00 PM
 24 HOURS TO LOCATES

1. BC HYDRO UNDERGROUND CIVIL INSPECTOR MUST CALL BEFORE YOU DIG
2. BC HYDRO CIVIL INSPECTOR MUST CALL BEFORE YOU DIG
3. BC HYDRO CIVIL INSPECTOR MUST CALL BEFORE YOU DIG
4. BC HYDRO CIVIL INSPECTOR MUST CALL BEFORE YOU DIG
5. BC HYDRO CIVIL INSPECTOR MUST CALL BEFORE YOU DIG
6. BC HYDRO CIVIL INSPECTOR MUST CALL BEFORE YOU DIG
7. BC HYDRO CIVIL INSPECTOR MUST CALL BEFORE YOU DIG
8. BC HYDRO CIVIL INSPECTOR MUST CALL BEFORE YOU DIG
9. BC HYDRO CIVIL INSPECTOR MUST CALL BEFORE YOU DIG
10. BC HYDRO CIVIL INSPECTOR MUST CALL BEFORE YOU DIG
11. BC HYDRO CIVIL INSPECTOR MUST CALL BEFORE YOU DIG
12. BC HYDRO CIVIL INSPECTOR MUST CALL BEFORE YOU DIG

CUSTOM NOTES HERE IF REQUIRED

CIVIL PLAN LEGEND:

EXISTING DUCT	EXISTING DUCT
FIELD COMPLETED DUCT	FIELD COMPLETED DUCT
SERVICE BOX	SERVICE BOX
TERMINAL POLE	TERMINAL POLE
LOW PROFILE TRANSFORMER (LPT)	LOW PROFILE TRANSFORMER (LPT)
(LPT-PRIME PAD)	(LPT-PRIME PAD)
2" x 18" JUNCTION & PULL BOXES	2" x 18" JUNCTION & PULL BOXES
(S25, S32, S32 & 1032)	(S25, S32, S32 & 1032)
VEHA SWITCH SUBMOUNTABLE (VSW)	VEHA SWITCH SUBMOUNTABLE (VSW)
VEHA SWITCH ABOVE GROUND (VSW)	VEHA SWITCH ABOVE GROUND (VSW)

REFER TO ES33 AND ES34 UNDERGROUND STANDARDS

CSA S250 ACCURACY NAD 83 - 10 UTM
 BASE ACCURACY LEVEL 4 +/- 1000 mm
 ASB ACCURACY LEVEL 4 +/- 1000 mm

UNDERGROUND UTILITY CHECKS

Utility	Location	Depth	Material	Notes
Water	100m	1.5m	HDPE	
Gas	100m	1.5m	HDPE	
Electric	100m	1.5m	Aluminum	
Telecom	100m	1.5m	Plastic	
Other	100m	1.5m	Various	

ST 1 Call Mark Use
 Empty Date
 Empty Contact

BC Hydro T&D ENGINEERING & DESIGN
LMN - COQUITLAM - MAPLE RIDGE
 COQUITLAM DISTRICT OFFICE
 UNDERGROUND DUCT AND STRUCTURES FOR
 ROCKLIN & BURKE VILLAGE BLVD
 COQUITLAM
 DRAW NO 413-U07-03425
 SHEET 3 OF 10
 DATE

NO.	DATE	BY	CHK	APP	REVISIONS
1					
2					
3					
4					
5					

NO.	DATE	BY	CHK	APP	REVISIONS
1					
2					
3					
4					
5					

NO.	DATE	BY	CHK	APP	REVISIONS
1					
2					
3					
4					
5					

NO.	DATE	BY	CHK	APP	REVISIONS
1					
2					
3					
4					
5					



WORK LOCATION N.T.S.

BC ONE CALL
 CALL BEFORE YOU DIG
 1-800-474-8888
 WORKING DAYS BEFORE
 WORKING DAYS TO LOCATES

- CIVIL ENGINEER'S CERTIFICATE OF REVIEW**
- BE HYDRO UNDERGROUND CIVIL INSPECTOR MUST SIGN AND SEAL THIS DRAWING.
 - WITHIN 14 DAYS BEFORE COMMENCEMENT OF CONSTRUCTION, THE CIVIL ENGINEER SHALL NOTIFY THE DISTRICT OFFICE OF THE PROJECT LOCATION AND THE DISTRICT OFFICE SHALL NOTIFY THE DISTRICT OFFICE OF THE PROJECT LOCATION AND THE DISTRICT OFFICE SHALL NOTIFY THE DISTRICT OFFICE OF THE PROJECT LOCATION.
 - THE CIVIL ENGINEER SHALL NOTIFY THE DISTRICT OFFICE OF THE PROJECT LOCATION AND THE DISTRICT OFFICE SHALL NOTIFY THE DISTRICT OFFICE OF THE PROJECT LOCATION.
 - THE CIVIL ENGINEER SHALL NOTIFY THE DISTRICT OFFICE OF THE PROJECT LOCATION AND THE DISTRICT OFFICE SHALL NOTIFY THE DISTRICT OFFICE OF THE PROJECT LOCATION.
 - THE CIVIL ENGINEER SHALL NOTIFY THE DISTRICT OFFICE OF THE PROJECT LOCATION AND THE DISTRICT OFFICE SHALL NOTIFY THE DISTRICT OFFICE OF THE PROJECT LOCATION.
 - THE CIVIL ENGINEER SHALL NOTIFY THE DISTRICT OFFICE OF THE PROJECT LOCATION AND THE DISTRICT OFFICE SHALL NOTIFY THE DISTRICT OFFICE OF THE PROJECT LOCATION.
 - THE CIVIL ENGINEER SHALL NOTIFY THE DISTRICT OFFICE OF THE PROJECT LOCATION AND THE DISTRICT OFFICE SHALL NOTIFY THE DISTRICT OFFICE OF THE PROJECT LOCATION.
 - THE CIVIL ENGINEER SHALL NOTIFY THE DISTRICT OFFICE OF THE PROJECT LOCATION AND THE DISTRICT OFFICE SHALL NOTIFY THE DISTRICT OFFICE OF THE PROJECT LOCATION.
 - THE CIVIL ENGINEER SHALL NOTIFY THE DISTRICT OFFICE OF THE PROJECT LOCATION AND THE DISTRICT OFFICE SHALL NOTIFY THE DISTRICT OFFICE OF THE PROJECT LOCATION.
 - THE CIVIL ENGINEER SHALL NOTIFY THE DISTRICT OFFICE OF THE PROJECT LOCATION AND THE DISTRICT OFFICE SHALL NOTIFY THE DISTRICT OFFICE OF THE PROJECT LOCATION.
 - THE CIVIL ENGINEER SHALL NOTIFY THE DISTRICT OFFICE OF THE PROJECT LOCATION AND THE DISTRICT OFFICE SHALL NOTIFY THE DISTRICT OFFICE OF THE PROJECT LOCATION.
 - THE CIVIL ENGINEER SHALL NOTIFY THE DISTRICT OFFICE OF THE PROJECT LOCATION AND THE DISTRICT OFFICE SHALL NOTIFY THE DISTRICT OFFICE OF THE PROJECT LOCATION.
 - THE CIVIL ENGINEER SHALL NOTIFY THE DISTRICT OFFICE OF THE PROJECT LOCATION AND THE DISTRICT OFFICE SHALL NOTIFY THE DISTRICT OFFICE OF THE PROJECT LOCATION.
 - THE CIVIL ENGINEER SHALL NOTIFY THE DISTRICT OFFICE OF THE PROJECT LOCATION AND THE DISTRICT OFFICE SHALL NOTIFY THE DISTRICT OFFICE OF THE PROJECT LOCATION.
 - THE CIVIL ENGINEER SHALL NOTIFY THE DISTRICT OFFICE OF THE PROJECT LOCATION AND THE DISTRICT OFFICE SHALL NOTIFY THE DISTRICT OFFICE OF THE PROJECT LOCATION.

CUSTOM NOTES HERE IF REQUIRED

CIVIL PLAN LEGEND:

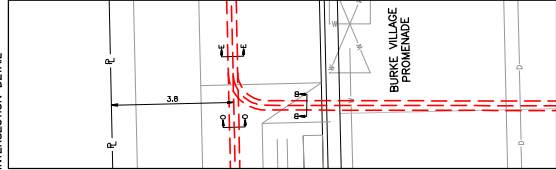
---	EXISTING DUCT
- - - -	FIELD COMPLETED DUCT
○	SERVICE BOX
□	TERMINAL POLE
□	TRANSFORMER
□	LOW PROFILE TRANSFORMER (LPT)
□	(LPT-PRIVACY PAD)
□	24" x 18" JUNCTION & PULL BOXES
□	(SIZE: 632, 832 & 1132)
□	VEVA SWITCH SUBSTATION (VSS)
□	VEVA SWITCH ABOVE GROUND (VSA)

REFER TO E533 AND E534 UNDERGROUND STANDARDS

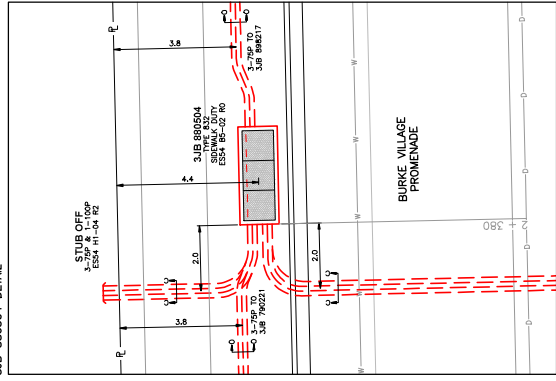
CSA S250 ACCURACY INAD 83 - 10 UTM
 BASE ACCURACY LEVEL 4 +/- 1000 mm
 ASB ACCURACY LEVEL 4 +/- 1000 mm

BC Hydro T&D ENGINEERING & DESIGN
 LMN - COQUITLAM - MAPLE RIDGE
 COQUITLAM DISTRICT OFFICE
 UNDERGROUND DUCT AND STRUCTURES FOR
 ROCKLIN & BURKE VILLAGE BLVD
 COQUITLAM
 DRAW NO: 413-U07-03425
 SHEET 4 OF 10
 DATE: 2018-03-08

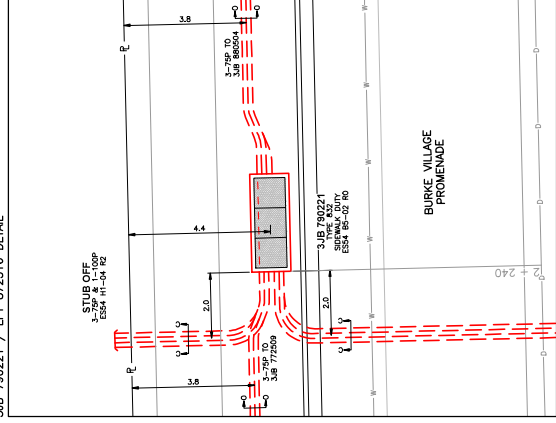
INTERSECTION DETAIL



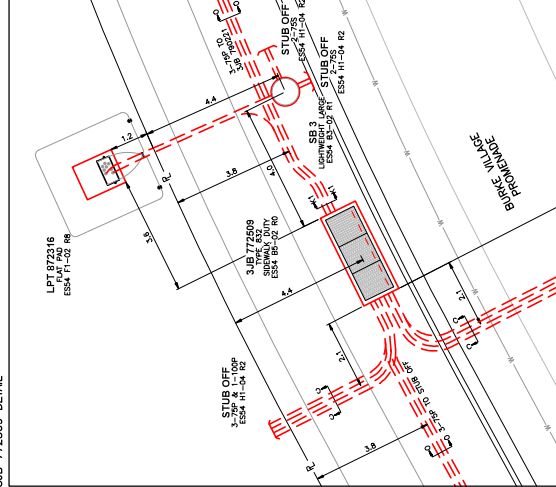
3JB 880504 DETAIL



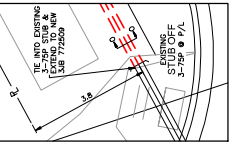
3JB 790221 / LPT 872316 DETAIL



3JB 775059 DETAIL



STUB OFF DETAIL



SEE DWG 413-U07-03133

DETAILS
 N.T.S.

UNDERGROUND UTILITY CHECKS

Utility	Location	Depth	Notes
Water	11111	1.8m	
Sewer	11111	1.8m	
Gas	11111	1.8m	
Electric	11111	1.8m	
Telecom	11111	1.8m	

Empty Date: _____

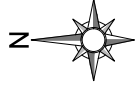
DISCLAIMER
 THE DRAWING IS THE PROPERTY OF BC HYDRO. IT IS TO BE USED ONLY FOR THE PROJECT AND SITE SPECIFICALLY IDENTIFIED HEREIN. IT IS NOT TO BE REPRODUCED, COPIED, OR TRANSMITTED IN ANY FORM OR BY ANY MEANS, ELECTRONIC OR MECHANICAL, INCLUDING PHOTOCOPYING, RECORDING, OR BY ANY INFORMATION STORAGE AND RETRIEVAL SYSTEM, WITHOUT THE WRITTEN PERMISSION OF BC HYDRO. BC HYDRO ASSUMES NO LIABILITY FOR ANY DAMAGE OR LOSS OF PROFITS, BUSINESS, OR REPUTATION, OR FOR ANY INCIDENTAL, CONSEQUENTIAL, OR PUNITIVE DAMAGES, INCLUDING REASONABLE ATTORNEY'S FEES, ARISING FROM THE USE OF THIS DRAWING. THE USER OF THIS DRAWING SHALL BE RESPONSIBLE FOR OBTAINING ALL NECESSARY PERMITS AND APPROVALS FROM THE APPROPRIATE AGENCIES AND AGENCIES OF GOVERNMENT. THE USER SHALL BE RESPONSIBLE FOR OBTAINING ALL NECESSARY PERMITS AND APPROVALS FROM THE APPROPRIATE AGENCIES AND AGENCIES OF GOVERNMENT.

NO.	DATE	BY	REV	DESCRIPTION
1	2018-03-08	JCH	0	ISSUED FOR CONSTRUCTION
2	2018-04-15	JCH	0	ISSUED FOR CONSTRUCTION
3	2018-03-08	JCH	0	ISSUED FOR CONSTRUCTION

NO.	DATE	BY	REV	DESCRIPTION
1	2018-03-08	JCH	0	ISSUED FOR CONSTRUCTION
2	2018-04-15	JCH	0	ISSUED FOR CONSTRUCTION
3	2018-03-08	JCH	0	ISSUED FOR CONSTRUCTION

NO.	DATE	BY	REV	DESCRIPTION
1	2018-03-08	JCH	0	ISSUED FOR CONSTRUCTION
2	2018-04-15	JCH	0	ISSUED FOR CONSTRUCTION
3	2018-03-08	JCH	0	ISSUED FOR CONSTRUCTION

ISSUED FOR CONSTRUCTION





WORK LOCATION I.S.
 BC ONE CALL
 CALL BEFORE YOU DIG
 1-800-474-6888
 WORKING DAYS BEFORE
 WORKING DAYS BEFORE
 WORKING DAYS BEFORE
 WORKING DAYS BEFORE

- CIVIL ENGINEER'S CERTIFICATE**
 1. THE CIVIL ENGINEER HAS REVIEWED THE DRAWING AND THE FIELD NOTES TO BE SURE THAT THE UNDERGROUND UTILITY LAYOUT IS ACCURATE AND THAT THE WORKING CONDITIONS ARE SUITABLE FOR THE PROPOSED INSTALLATION.
 2. THE CIVIL ENGINEER HAS BEEN ADVISED BY THE CONTRACTOR THAT THE INSTALLATION WILL BE DONE IN ACCORDANCE WITH THE SPECIFICATIONS AND STANDARDS.
 3. THE CIVIL ENGINEER HAS BEEN ADVISED BY THE CONTRACTOR THAT THE INSTALLATION WILL BE DONE IN ACCORDANCE WITH THE SPECIFICATIONS AND STANDARDS.
 4. THE CIVIL ENGINEER HAS BEEN ADVISED BY THE CONTRACTOR THAT THE INSTALLATION WILL BE DONE IN ACCORDANCE WITH THE SPECIFICATIONS AND STANDARDS.
 5. THE CIVIL ENGINEER HAS BEEN ADVISED BY THE CONTRACTOR THAT THE INSTALLATION WILL BE DONE IN ACCORDANCE WITH THE SPECIFICATIONS AND STANDARDS.
 6. THE CIVIL ENGINEER HAS BEEN ADVISED BY THE CONTRACTOR THAT THE INSTALLATION WILL BE DONE IN ACCORDANCE WITH THE SPECIFICATIONS AND STANDARDS.
 7. THE CIVIL ENGINEER HAS BEEN ADVISED BY THE CONTRACTOR THAT THE INSTALLATION WILL BE DONE IN ACCORDANCE WITH THE SPECIFICATIONS AND STANDARDS.
 8. THE CIVIL ENGINEER HAS BEEN ADVISED BY THE CONTRACTOR THAT THE INSTALLATION WILL BE DONE IN ACCORDANCE WITH THE SPECIFICATIONS AND STANDARDS.
 9. THE CIVIL ENGINEER HAS BEEN ADVISED BY THE CONTRACTOR THAT THE INSTALLATION WILL BE DONE IN ACCORDANCE WITH THE SPECIFICATIONS AND STANDARDS.
 10. THE CIVIL ENGINEER HAS BEEN ADVISED BY THE CONTRACTOR THAT THE INSTALLATION WILL BE DONE IN ACCORDANCE WITH THE SPECIFICATIONS AND STANDARDS.
 11. THE CIVIL ENGINEER HAS BEEN ADVISED BY THE CONTRACTOR THAT THE INSTALLATION WILL BE DONE IN ACCORDANCE WITH THE SPECIFICATIONS AND STANDARDS.
 12. THE CIVIL ENGINEER HAS BEEN ADVISED BY THE CONTRACTOR THAT THE INSTALLATION WILL BE DONE IN ACCORDANCE WITH THE SPECIFICATIONS AND STANDARDS.

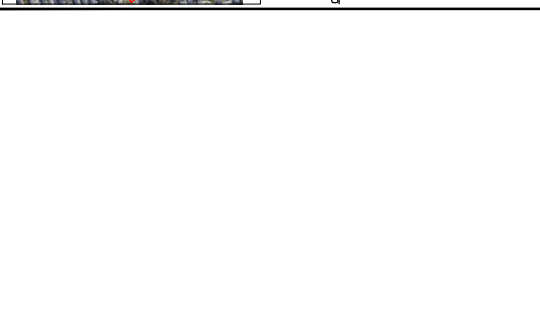
CUSTOM NOTES HERE IF REQUIRED

CIVIL PLAN LEGEND:

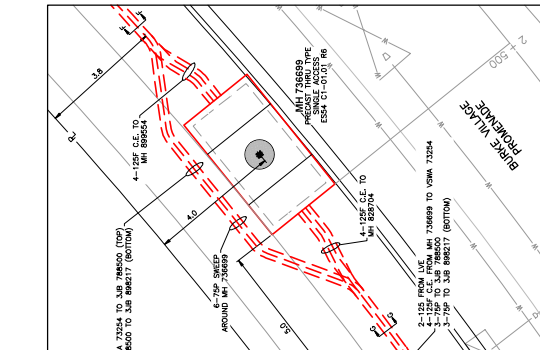
[Symbol]	EXISTING DUCT
[Symbol]	FIELD COMPLETED DUCT
[Symbol]	SERVICE BOX
[Symbol]	TERMINAL POLE
[Symbol]	TRANSFORMER
[Symbol]	LOW VOLTAGE TRANSFORMER (LVT)
[Symbol]	UTILITY PROPERTY LINE (UT-PROPERTY LINE)
[Symbol]	UTILITY PROPERTY LINE (UT-PROPERTY LINE)
[Symbol]	UTILITY PROPERTY LINE (UT-PROPERTY LINE)
[Symbol]	UTILITY PROPERTY LINE (UT-PROPERTY LINE)
[Symbol]	UTILITY PROPERTY LINE (UT-PROPERTY LINE)
[Symbol]	UTILITY PROPERTY LINE (UT-PROPERTY LINE)

REFER TO E.S.S. AND E.S.S. UNDERGROUND STANDARDS
 CSA S250 ACCURACY INAD 83 - 10 UTM
 BASE ACCURACY LEVEL 4 +/- 1000 mm
 ASB ACCURACY LEVEL 4 +/- 1000 mm

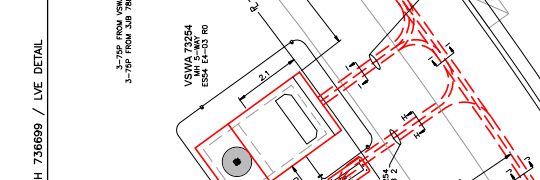
BC HYDRO T&D ENGINEERING & DESIGN
 LMN - COQUITLAM - MAPLE RIDGE
 COQUITLAM DISTRICT OFFICE
 UNDERGROUND DUCT AND STRUCTURES FOR
 ROCKLIN & BURKE VILLAGE BLVD
 COQUITLAM
 DRAW NO 413-U07-03425
 SHEET 5 OF 10
 DATE



3.JB 73254 / MH 736699 / LVE DETAIL



3.JB 788500 DETAIL



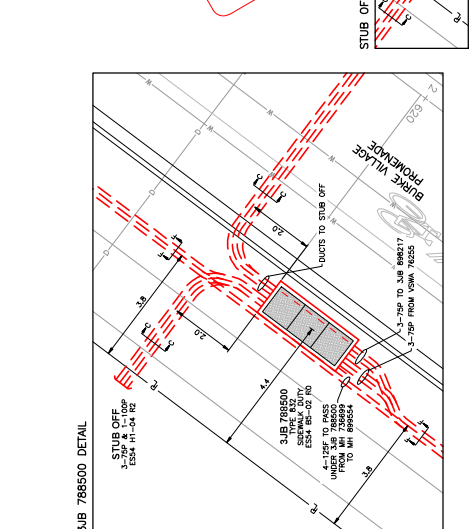
3.JB 898217 / LPT 852883 / SB 2 DETAIL

ISSUED FOR CONSTRUCTION

UNDERGROUND UTILITY CHECK

Item No	Location	Depth	Material	Status

DISCLAIMER
 THE DRAWING IS THE PROPERTY OF BC HYDRO T&D ENGINEERING & DESIGN. IT IS NOT TO BE REPRODUCED, COPIED, OR TRANSMITTED IN ANY FORM OR BY ANY MEANS, ELECTRONIC OR MECHANICAL, WITHOUT THE WRITTEN PERMISSION OF BC HYDRO T&D ENGINEERING & DESIGN.



STUB OFF DETAIL

REVISIONS

NO	DATE	DESIGNED	CHK	INSP	APP	REI	ACT

REFERENCE DRAWINGS

NO	DATE	DESIGNED	CHK	INSP	APP	REI	ACT

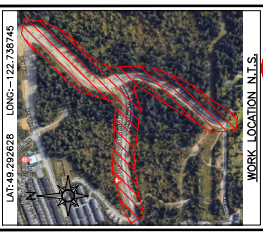
REVISIONS

NO	DATE	DESIGNED	CHK	INSP	APP	REI	ACT

REVISIONS

NO	DATE	DESIGNED	CHK	INSP	APP	REI	ACT





LAT:49.292628 LONG:-122.78745

WORK LOCATION N.I.S.

- BEFORE YOU DO:**
 1-800-474-6888
 WORKING DAYS BEFORE
 08:00 AM TO 05:00 PM

BEFORE YOU DO:

- BEFORE ANY WORKING, A CIVIL ENGINEER OR INSPECTOR MUST BE NOTIFIED BY PHONE TO CONDUCT VISUAL SURVEY OF WORK AREA. THE CIVIL ENGINEER OR INSPECTOR WILL BE AVAILABLE TO ASSIST WITH ANY QUESTIONS REGARDING THE WORK AREA.
- BEFORE ANY WORKING, THE CIVIL ENGINEER OR INSPECTOR MUST BE NOTIFIED BY PHONE TO CONDUCT VISUAL SURVEY OF WORK AREA. THE CIVIL ENGINEER OR INSPECTOR WILL BE AVAILABLE TO ASSIST WITH ANY QUESTIONS REGARDING THE WORK AREA.
- BEFORE ANY WORKING, THE CIVIL ENGINEER OR INSPECTOR MUST BE NOTIFIED BY PHONE TO CONDUCT VISUAL SURVEY OF WORK AREA. THE CIVIL ENGINEER OR INSPECTOR WILL BE AVAILABLE TO ASSIST WITH ANY QUESTIONS REGARDING THE WORK AREA.
- BEFORE ANY WORKING, THE CIVIL ENGINEER OR INSPECTOR MUST BE NOTIFIED BY PHONE TO CONDUCT VISUAL SURVEY OF WORK AREA. THE CIVIL ENGINEER OR INSPECTOR WILL BE AVAILABLE TO ASSIST WITH ANY QUESTIONS REGARDING THE WORK AREA.
- BEFORE ANY WORKING, THE CIVIL ENGINEER OR INSPECTOR MUST BE NOTIFIED BY PHONE TO CONDUCT VISUAL SURVEY OF WORK AREA. THE CIVIL ENGINEER OR INSPECTOR WILL BE AVAILABLE TO ASSIST WITH ANY QUESTIONS REGARDING THE WORK AREA.
- BEFORE ANY WORKING, THE CIVIL ENGINEER OR INSPECTOR MUST BE NOTIFIED BY PHONE TO CONDUCT VISUAL SURVEY OF WORK AREA. THE CIVIL ENGINEER OR INSPECTOR WILL BE AVAILABLE TO ASSIST WITH ANY QUESTIONS REGARDING THE WORK AREA.
- BEFORE ANY WORKING, THE CIVIL ENGINEER OR INSPECTOR MUST BE NOTIFIED BY PHONE TO CONDUCT VISUAL SURVEY OF WORK AREA. THE CIVIL ENGINEER OR INSPECTOR WILL BE AVAILABLE TO ASSIST WITH ANY QUESTIONS REGARDING THE WORK AREA.
- BEFORE ANY WORKING, THE CIVIL ENGINEER OR INSPECTOR MUST BE NOTIFIED BY PHONE TO CONDUCT VISUAL SURVEY OF WORK AREA. THE CIVIL ENGINEER OR INSPECTOR WILL BE AVAILABLE TO ASSIST WITH ANY QUESTIONS REGARDING THE WORK AREA.
- BEFORE ANY WORKING, THE CIVIL ENGINEER OR INSPECTOR MUST BE NOTIFIED BY PHONE TO CONDUCT VISUAL SURVEY OF WORK AREA. THE CIVIL ENGINEER OR INSPECTOR WILL BE AVAILABLE TO ASSIST WITH ANY QUESTIONS REGARDING THE WORK AREA.
- BEFORE ANY WORKING, THE CIVIL ENGINEER OR INSPECTOR MUST BE NOTIFIED BY PHONE TO CONDUCT VISUAL SURVEY OF WORK AREA. THE CIVIL ENGINEER OR INSPECTOR WILL BE AVAILABLE TO ASSIST WITH ANY QUESTIONS REGARDING THE WORK AREA.
- BEFORE ANY WORKING, THE CIVIL ENGINEER OR INSPECTOR MUST BE NOTIFIED BY PHONE TO CONDUCT VISUAL SURVEY OF WORK AREA. THE CIVIL ENGINEER OR INSPECTOR WILL BE AVAILABLE TO ASSIST WITH ANY QUESTIONS REGARDING THE WORK AREA.
- BEFORE ANY WORKING, THE CIVIL ENGINEER OR INSPECTOR MUST BE NOTIFIED BY PHONE TO CONDUCT VISUAL SURVEY OF WORK AREA. THE CIVIL ENGINEER OR INSPECTOR WILL BE AVAILABLE TO ASSIST WITH ANY QUESTIONS REGARDING THE WORK AREA.
- BEFORE ANY WORKING, THE CIVIL ENGINEER OR INSPECTOR MUST BE NOTIFIED BY PHONE TO CONDUCT VISUAL SURVEY OF WORK AREA. THE CIVIL ENGINEER OR INSPECTOR WILL BE AVAILABLE TO ASSIST WITH ANY QUESTIONS REGARDING THE WORK AREA.
- BEFORE ANY WORKING, THE CIVIL ENGINEER OR INSPECTOR MUST BE NOTIFIED BY PHONE TO CONDUCT VISUAL SURVEY OF WORK AREA. THE CIVIL ENGINEER OR INSPECTOR WILL BE AVAILABLE TO ASSIST WITH ANY QUESTIONS REGARDING THE WORK AREA.
- BEFORE ANY WORKING, THE CIVIL ENGINEER OR INSPECTOR MUST BE NOTIFIED BY PHONE TO CONDUCT VISUAL SURVEY OF WORK AREA. THE CIVIL ENGINEER OR INSPECTOR WILL BE AVAILABLE TO ASSIST WITH ANY QUESTIONS REGARDING THE WORK AREA.

CIVIL ENGINEER'S NOTES:

- BEFORE ANY WORKING, A CIVIL ENGINEER OR INSPECTOR MUST BE NOTIFIED BY PHONE TO CONDUCT VISUAL SURVEY OF WORK AREA. THE CIVIL ENGINEER OR INSPECTOR WILL BE AVAILABLE TO ASSIST WITH ANY QUESTIONS REGARDING THE WORK AREA.
- BEFORE ANY WORKING, THE CIVIL ENGINEER OR INSPECTOR MUST BE NOTIFIED BY PHONE TO CONDUCT VISUAL SURVEY OF WORK AREA. THE CIVIL ENGINEER OR INSPECTOR WILL BE AVAILABLE TO ASSIST WITH ANY QUESTIONS REGARDING THE WORK AREA.
- BEFORE ANY WORKING, THE CIVIL ENGINEER OR INSPECTOR MUST BE NOTIFIED BY PHONE TO CONDUCT VISUAL SURVEY OF WORK AREA. THE CIVIL ENGINEER OR INSPECTOR WILL BE AVAILABLE TO ASSIST WITH ANY QUESTIONS REGARDING THE WORK AREA.
- BEFORE ANY WORKING, THE CIVIL ENGINEER OR INSPECTOR MUST BE NOTIFIED BY PHONE TO CONDUCT VISUAL SURVEY OF WORK AREA. THE CIVIL ENGINEER OR INSPECTOR WILL BE AVAILABLE TO ASSIST WITH ANY QUESTIONS REGARDING THE WORK AREA.
- BEFORE ANY WORKING, THE CIVIL ENGINEER OR INSPECTOR MUST BE NOTIFIED BY PHONE TO CONDUCT VISUAL SURVEY OF WORK AREA. THE CIVIL ENGINEER OR INSPECTOR WILL BE AVAILABLE TO ASSIST WITH ANY QUESTIONS REGARDING THE WORK AREA.
- BEFORE ANY WORKING, THE CIVIL ENGINEER OR INSPECTOR MUST BE NOTIFIED BY PHONE TO CONDUCT VISUAL SURVEY OF WORK AREA. THE CIVIL ENGINEER OR INSPECTOR WILL BE AVAILABLE TO ASSIST WITH ANY QUESTIONS REGARDING THE WORK AREA.
- BEFORE ANY WORKING, THE CIVIL ENGINEER OR INSPECTOR MUST BE NOTIFIED BY PHONE TO CONDUCT VISUAL SURVEY OF WORK AREA. THE CIVIL ENGINEER OR INSPECTOR WILL BE AVAILABLE TO ASSIST WITH ANY QUESTIONS REGARDING THE WORK AREA.
- BEFORE ANY WORKING, THE CIVIL ENGINEER OR INSPECTOR MUST BE NOTIFIED BY PHONE TO CONDUCT VISUAL SURVEY OF WORK AREA. THE CIVIL ENGINEER OR INSPECTOR WILL BE AVAILABLE TO ASSIST WITH ANY QUESTIONS REGARDING THE WORK AREA.
- BEFORE ANY WORKING, THE CIVIL ENGINEER OR INSPECTOR MUST BE NOTIFIED BY PHONE TO CONDUCT VISUAL SURVEY OF WORK AREA. THE CIVIL ENGINEER OR INSPECTOR WILL BE AVAILABLE TO ASSIST WITH ANY QUESTIONS REGARDING THE WORK AREA.
- BEFORE ANY WORKING, THE CIVIL ENGINEER OR INSPECTOR MUST BE NOTIFIED BY PHONE TO CONDUCT VISUAL SURVEY OF WORK AREA. THE CIVIL ENGINEER OR INSPECTOR WILL BE AVAILABLE TO ASSIST WITH ANY QUESTIONS REGARDING THE WORK AREA.
- BEFORE ANY WORKING, THE CIVIL ENGINEER OR INSPECTOR MUST BE NOTIFIED BY PHONE TO CONDUCT VISUAL SURVEY OF WORK AREA. THE CIVIL ENGINEER OR INSPECTOR WILL BE AVAILABLE TO ASSIST WITH ANY QUESTIONS REGARDING THE WORK AREA.
- BEFORE ANY WORKING, THE CIVIL ENGINEER OR INSPECTOR MUST BE NOTIFIED BY PHONE TO CONDUCT VISUAL SURVEY OF WORK AREA. THE CIVIL ENGINEER OR INSPECTOR WILL BE AVAILABLE TO ASSIST WITH ANY QUESTIONS REGARDING THE WORK AREA.
- BEFORE ANY WORKING, THE CIVIL ENGINEER OR INSPECTOR MUST BE NOTIFIED BY PHONE TO CONDUCT VISUAL SURVEY OF WORK AREA. THE CIVIL ENGINEER OR INSPECTOR WILL BE AVAILABLE TO ASSIST WITH ANY QUESTIONS REGARDING THE WORK AREA.
- BEFORE ANY WORKING, THE CIVIL ENGINEER OR INSPECTOR MUST BE NOTIFIED BY PHONE TO CONDUCT VISUAL SURVEY OF WORK AREA. THE CIVIL ENGINEER OR INSPECTOR WILL BE AVAILABLE TO ASSIST WITH ANY QUESTIONS REGARDING THE WORK AREA.
- BEFORE ANY WORKING, THE CIVIL ENGINEER OR INSPECTOR MUST BE NOTIFIED BY PHONE TO CONDUCT VISUAL SURVEY OF WORK AREA. THE CIVIL ENGINEER OR INSPECTOR WILL BE AVAILABLE TO ASSIST WITH ANY QUESTIONS REGARDING THE WORK AREA.

CUSTOM NOTES: HERE IF REQUIRED

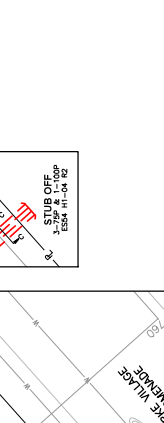
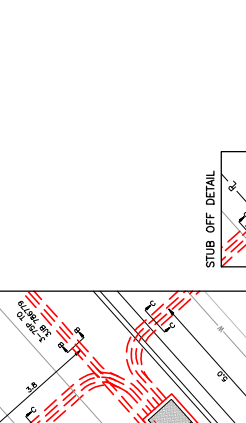
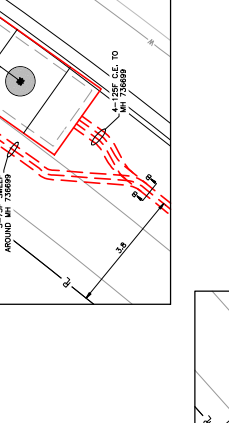
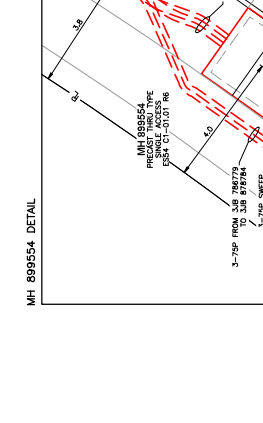
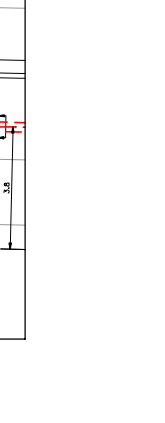
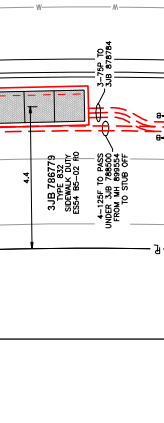
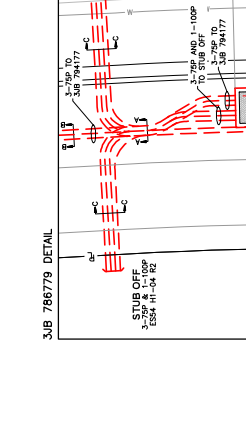
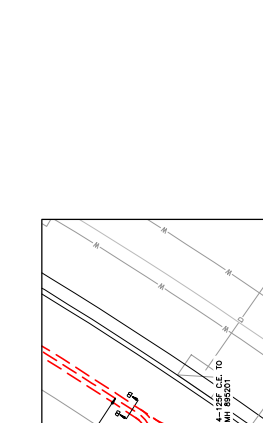
CIVIL PLAN LEGEND:
 --- FIELD COMPLETED DUCT
 --- EXISTING DUCT
 --- SERVICE BOX
 --- TERMINAL POLE
 --- TRANSFORMER (LPT-PRIMARY PAD)
 --- LOW PROFILE TRANSFORMER (LPT)
 --- 24" & 18" JUNCTION & PULL BOXES (ESS 4, 52, 53 & 132)
 --- 24" & 18" JUNCTION & PULL BOXES (ESS 1, 2, 3, 4, 5, 6, 7, 8, 9, 10, 11, 12)
 --- VESA SWITCH ASSEMBLY (VESA)
 --- VESA SWITCH ASSEMBLY (VESA)

UNDERGROUND UTILITY CHECKS

Utility	Depth (ft)	Location	Notes
Water	48"	ESS 4, 52, 53 & 132	
Sewer	48"	ESS 4, 52, 53 & 132	
Gas	48"	ESS 4, 52, 53 & 132	
Electric	48"	ESS 4, 52, 53 & 132	
Telephone	48"	ESS 4, 52, 53 & 132	
Optical Fiber	48"	ESS 4, 52, 53 & 132	
Other			

DISCLAIMER:
 THE CONTRACTOR SHALL BE RESPONSIBLE FOR VERIFYING THE LOCATION AND DEPTH OF ALL UTILITIES PRIOR TO CONSTRUCTION. THE CONTRACTOR SHALL BE RESPONSIBLE FOR OBTAINING ALL NECESSARY PERMITS FROM THE LOCAL JURISDICTION. THE CONTRACTOR SHALL BE RESPONSIBLE FOR PROTECTING ALL UTILITIES AND STRUCTURES REMAINING ON THE SITE. THE CONTRACTOR SHALL BE RESPONSIBLE FOR MAINTAINING ACCESS TO ALL ADJACENT PROPERTIES AND STRUCTURES. THE CONTRACTOR SHALL BE RESPONSIBLE FOR RESTORING ALL UTILITIES AND STRUCTURES TO ORIGINAL OR BETTER CONDITION. THE CONTRACTOR SHALL BE RESPONSIBLE FOR OBTAINING ALL NECESSARY PERMITS FROM THE LOCAL JURISDICTION. THE CONTRACTOR SHALL BE RESPONSIBLE FOR PROTECTING ALL UTILITIES AND STRUCTURES REMAINING ON THE SITE. THE CONTRACTOR SHALL BE RESPONSIBLE FOR MAINTAINING ACCESS TO ALL ADJACENT PROPERTIES AND STRUCTURES. THE CONTRACTOR SHALL BE RESPONSIBLE FOR RESTORING ALL UTILITIES AND STRUCTURES TO ORIGINAL OR BETTER CONDITION.

BC Hydro T&D ENGINEERING & DESIGN
LMN - COQUITLAM - MAPLE RIDGE
 COQUITLAM DISTRICT OFFICE
 UNDERGROUND DUCT AND STRUCTURES FOR
 ROCKLIN & BURKE VILLAGE BLVD
 COQUITLAM
 SHEET 6 OF 10
 DATE: 2019-03-08
 DWG NO: 413-U07-03425



NO	DATE	DESIGNED	CHECKED	INSP	APP	ACFT	REVISIONS
1	2019-03-08	JCH	ACD				
2	2019-04-15	JCH	ACD				

ISSUED FOR CONSTRUCTION

REVISIONS

DATE: 2019-03-08

DWG NO: 413-U07-03425

SHEET 6 OF 10

DATE: 2019-03-08

DESIGNED: JCH

CHECKED: ACD

INSP: []

APP: []

ACFT: []

DISCLAIMER
 THE INFORMATION CONTAINED HEREIN IS FOR INFORMATIONAL PURPOSES ONLY AND IS NOT TO BE USED AS A BASIS FOR ANY DESIGN OR CONSTRUCTION. THE USER SHALL BE RESPONSIBLE FOR OBTAINING ALL NECESSARY PERMITS AND FOR VERIFYING THE ACCURACY OF ALL INFORMATION. THE USER SHALL BE RESPONSIBLE FOR OBTAINING ALL NECESSARY PERMITS AND FOR VERIFYING THE ACCURACY OF ALL INFORMATION. THE USER SHALL BE RESPONSIBLE FOR OBTAINING ALL NECESSARY PERMITS AND FOR VERIFYING THE ACCURACY OF ALL INFORMATION.



WORK LOCATION N.T.S.
 BC ONE CALL
 CALL BEFORE YOU DIG
 1-800-474-8888
 WORKING DAYS BEFORE
 8:00 AM TO 5:00 PM
 MON-FRI

- BC HYDRO UNDERGROUND CIVIL INSPECTOR MUST CALL BEFORE YOU DIG**
1. BC HYDRO UNDERGROUND CIVIL INSPECTOR MUST CALL BEFORE YOU DIG
 2. BC HYDRO UNDERGROUND CIVIL INSPECTOR MUST CALL BEFORE YOU DIG
 3. BC HYDRO UNDERGROUND CIVIL INSPECTOR MUST CALL BEFORE YOU DIG
 4. BC HYDRO UNDERGROUND CIVIL INSPECTOR MUST CALL BEFORE YOU DIG
 5. BC HYDRO UNDERGROUND CIVIL INSPECTOR MUST CALL BEFORE YOU DIG
 6. BC HYDRO UNDERGROUND CIVIL INSPECTOR MUST CALL BEFORE YOU DIG
 7. BC HYDRO UNDERGROUND CIVIL INSPECTOR MUST CALL BEFORE YOU DIG
 8. BC HYDRO UNDERGROUND CIVIL INSPECTOR MUST CALL BEFORE YOU DIG
 9. BC HYDRO UNDERGROUND CIVIL INSPECTOR MUST CALL BEFORE YOU DIG
 10. BC HYDRO UNDERGROUND CIVIL INSPECTOR MUST CALL BEFORE YOU DIG
 11. BC HYDRO UNDERGROUND CIVIL INSPECTOR MUST CALL BEFORE YOU DIG
 12. BC HYDRO UNDERGROUND CIVIL INSPECTOR MUST CALL BEFORE YOU DIG

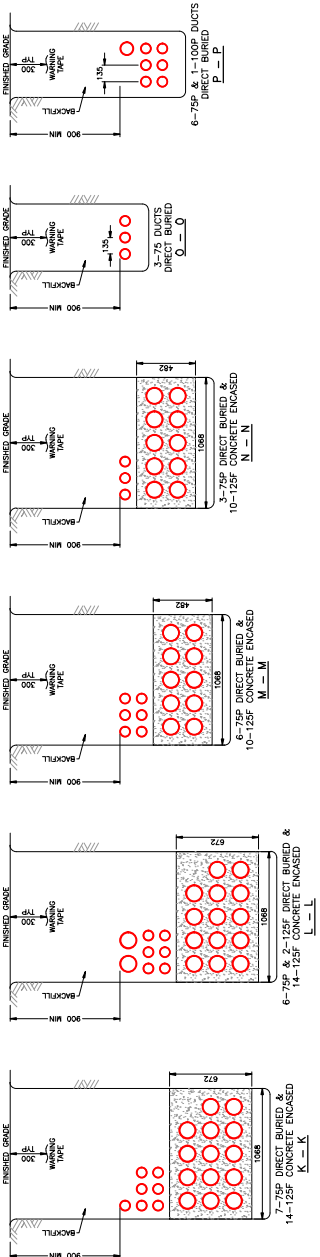
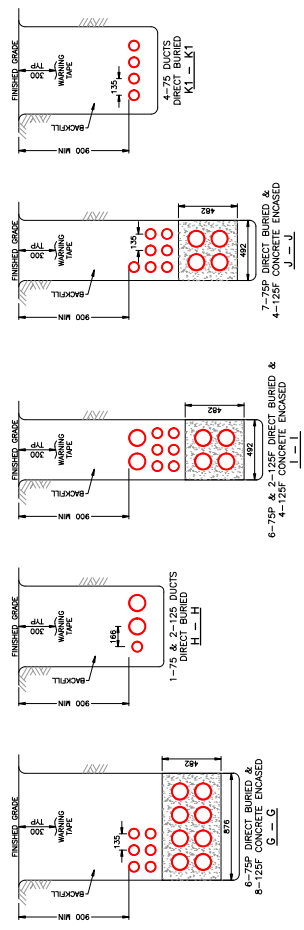
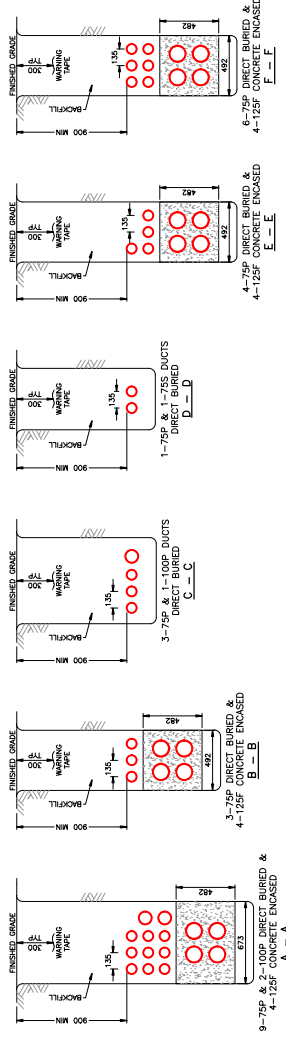
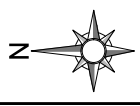
CUSTOM NOTES HERE IF REQUIRED

ISSUED FOR CONSTRUCTION

UNDERGROUND UTILITY CHECKS

Utility	Depth	Material	Location	Notes
Water	1.5m	PVC	1000	
Sewer	1.5m	PVC	1000	
Gas	1.5m	PE	1000	
Electric	1.5m	PE	1000	
Other				

BC Hydro
 T&D ENGINEERING & DESIGN
 LMN - COQUITLAM - MAPLE RIDGE
 COQUITLAM DISTRICT OFFICE
 UNDERGROUND DUCT AND STRUCTURES FOR
 ROCKLIN & BURKE VILLAGE BLVD
 COQUITLAM
 DRAW NO 413-U07-03425
 SHEET 9 OF 10
 DATE



TRENCH DETAILS
 N.T.S.

REVISIONS

NO	DATE	DESIGNED	CHECKED	INSP	APP	REMARKS
1	2019-03-08					ISSUED FOR CONSTRUCTION
2	2019-04-15					LOCATION CHANGED

REFERENCE DRAWINGS

NO	DRAWING NUMBER	DATE	DESIGNED	CHECKED	INSP	APP	REMARKS
1	413-U07-0303						
2	413-U07-0313						

REVISIONS

NO	DATE	DESIGNED	CHECKED	INSP	APP	REMARKS
1	2019-03-08					ISSUED FOR CONSTRUCTION
2	2019-04-15					LOCATION CHANGED

REFERENCE DRAWINGS

NO	DRAWING NUMBER	DATE	DESIGNED	CHECKED	INSP	APP	REMARKS
1	413-U07-0303						
2	413-U07-0313						

REVISIONS

NO	DATE	DESIGNED	CHECKED	INSP	APP	REMARKS
1	2019-03-08					ISSUED FOR CONSTRUCTION
2	2019-04-15					LOCATION CHANGED



LAT: 49.292628 LONG: -122.78745

WORK LOCATION N.I.S.

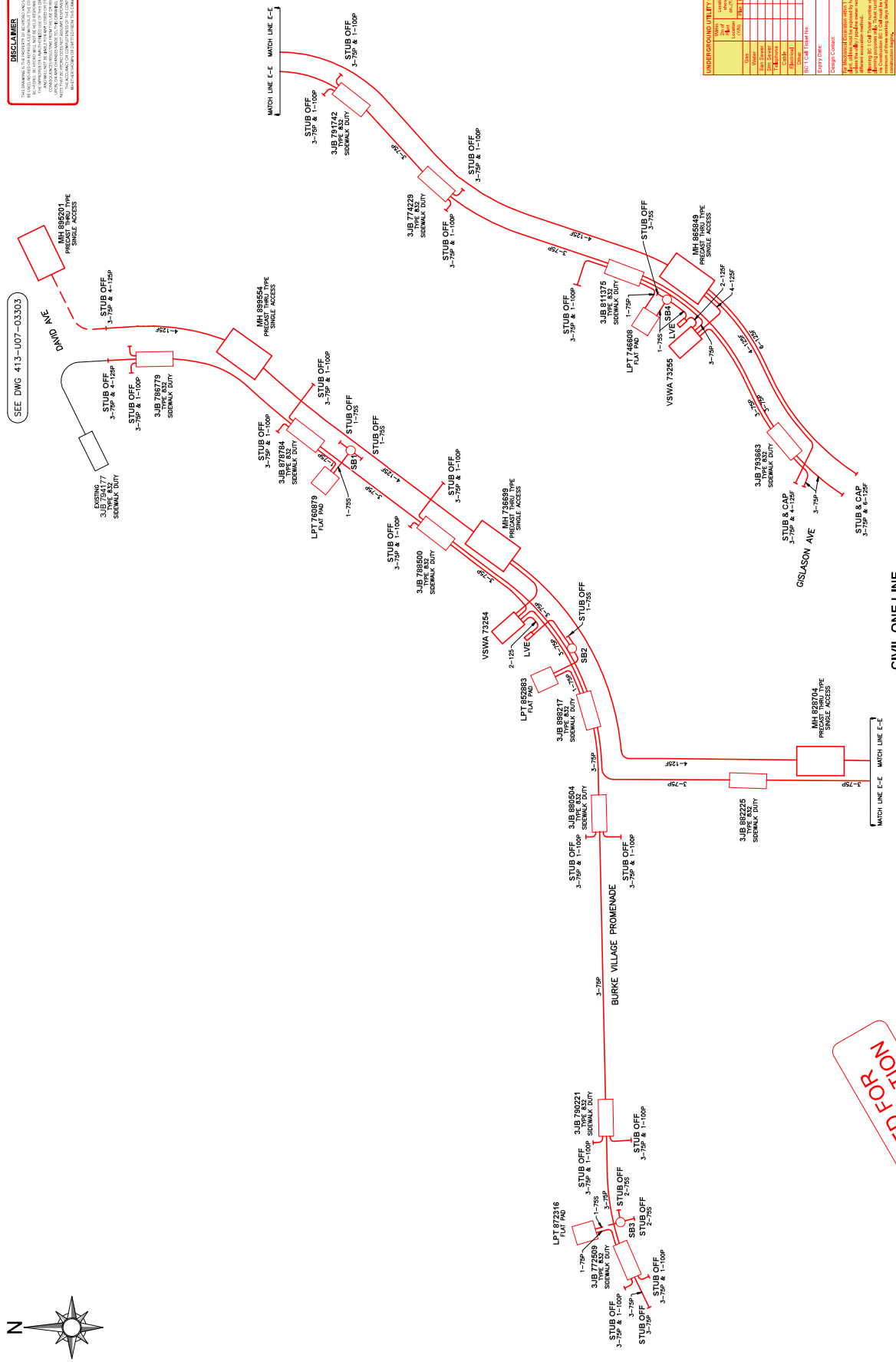
- BEFORE YOU DO:**
 1. CALL BEFORE YOU DIG 1-800-474-8888
 2. ALL WORKING DAYS BEFORE
 3. ALL WORKING DAYS BEFORE
 4. ALL WORKING DAYS BEFORE
- BEFORE YOU DO:**
 1. BE HYDRO UNDERGROUND CIVIL INSPECTOR MUST
 2. BE NOTIFIED BY THE OWNER PRIOR TO CONSTRUCTION
 3. WITH A LIST OF WORK, REQUIREMENTS, LINES AND DEPT.
 4. ENGINEERING STRONG POINTS, SERVICES, ETC. AND DEPT.
 5. OF THE HYDRO CIVIL INSPECTOR. BE AWARE OF THE
 6. PUBLIC OR PRIVATE PROPERTY SHOULD HAVE THE LINE
 7. 3. MIN. THICKNESS OF 10mm.
 8. CIVIL INSPECTOR AND CIVIL ENGINEER MUST MARKDOWN A
 9. DESIGNATED OVERLAP BY BC HYDRO CIVIL
 10. OTHER UTILITIES SHOWN ON THE CIVIL DRAWING.
 11. ALL UTILITIES IN THE WORK AREA BEFORE
 12. CONTACT BE THE CALL
 13. PLANT
 14. WHILE ALARMED IN DEGREE, MAINTAINED IN
 15. NON-ADDITIONAL CLEAR AN PROTECTED PLANTING
 16. BE DETERMINED IN THE FIELD BY BC HYDRO CIVIL
 17. FOR TRANSFORMER PAD AND COUNTERPOISE
 18. UNDERGROUND CONDUCTIVE SURFACES. SEE ESHA
 19. UNDERGROUND CONDUCTIVE SURFACES. SEE ESHA
 20. FROM PROPERTY LINE 2.1m, UNLESS
 21. STUB SURFACE DUCT LOW FROM PROPERTY
 22. OTHER UTILITY

CUSTOM NOTES HERE IF REQUIRED

UNDERGROUND UTILITY CHECKS

Utility	Depth	Material	Notes
Water	1000	PVC	
Gas	1000	PE	
Electric	1000	Aluminum	
Other			

CSA S250 ACCURACY INAD 83 - 10 UTM
 BASE ACCURACY LEVEL 4 +/- 1000 mm
 ASB ACCURACY LEVEL 4 +/- 1000 mm



REVISIONS

NO	DATE	DESIGNED	CHEK	INSP	APP	REMARKS
1	2018-03-08					ISSUED FOR CONSTRUCTION
2	2018-04-15					ISSUED FOR CONSTRUCTION

REFERENCE DRAWINGS

NO	DATE	DESIGNED	CHEK	INSP	APP	REMARKS
1	2018-03-08					ISSUED FOR CONSTRUCTION
2	2018-04-15					ISSUED FOR CONSTRUCTION

PROJECT INFORMATION

NO	DATE	DESIGNED	CHEK	INSP	APP	REMARKS
1	2018-03-08					ISSUED FOR CONSTRUCTION
2	2018-04-15					ISSUED FOR CONSTRUCTION

CLIENT INFORMATION

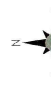
NO	DATE	DESIGNED	CHEK	INSP	APP	REMARKS
1	2018-03-08					ISSUED FOR CONSTRUCTION
2	2018-04-15					ISSUED FOR CONSTRUCTION

PROJECT INFORMATION

NO	DATE	DESIGNED	CHEK	INSP	APP	REMARKS
1	2018-03-08					ISSUED FOR CONSTRUCTION
2	2018-04-15					ISSUED FOR CONSTRUCTION



ISSUED FOR CONSTRUCTION



CONSTRUCTION NOTES:
 ALL SHAW DUCTS TO BE IN COMMON TRENCH WITH BS HYDRANT UNLESS OTHERWISE NOTED.
SHAW RECORDS:
 A. PRE-CONSTRUCTION MEETING WITH THE CITY, ENGINEERS, ADDRESS CONSTRUCTION RELATED QUESTIONS, TO ADDRESS CONSTRUCTION RELATED QUESTIONS.
 B. PLACED PRIOR TO BACKFILL PLACING.
 C. A FINAL INSPECTION OF THE SHAW RECORDS TO BE MADE BY THE CONTRACTOR.
 THE CONTRACTOR IS TO REQUEST OFFICE CITY MATERIALS FROM SHAW A MINIMUM OF TEN (10) BUSINESS DAYS PRIOR TO THE START OF CONSTRUCTION. THE CONTRACTOR SHALL CARRY AND HANDLE WITH TRUCK NUMBERS RPH-44984.

CONTRACTOR TO REFER TO STATION (STA) AND FIRE HYDRANTS FOR DIMENSIONS
SHAW SERVICE BOXES/VALVES ARE NOT TO BE PLACED ON SIDEWALKS OR DRIVEWAYS

CITY OF COQUITLAM
 Engineering & Public Works

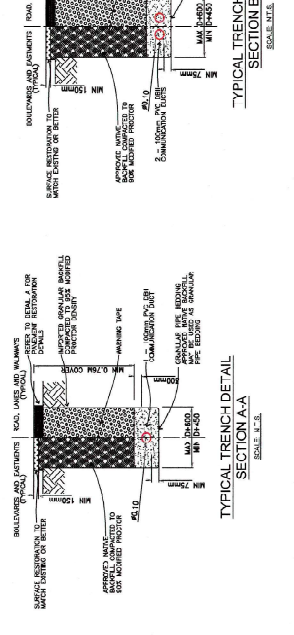
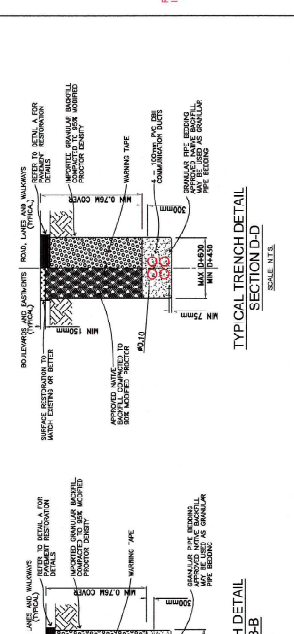
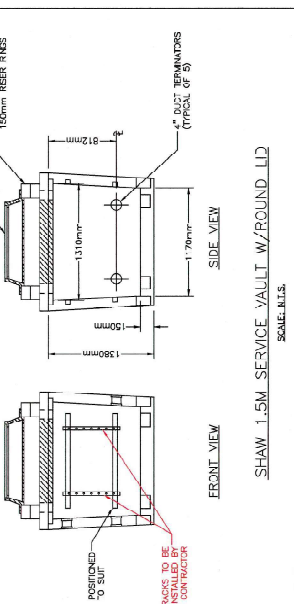
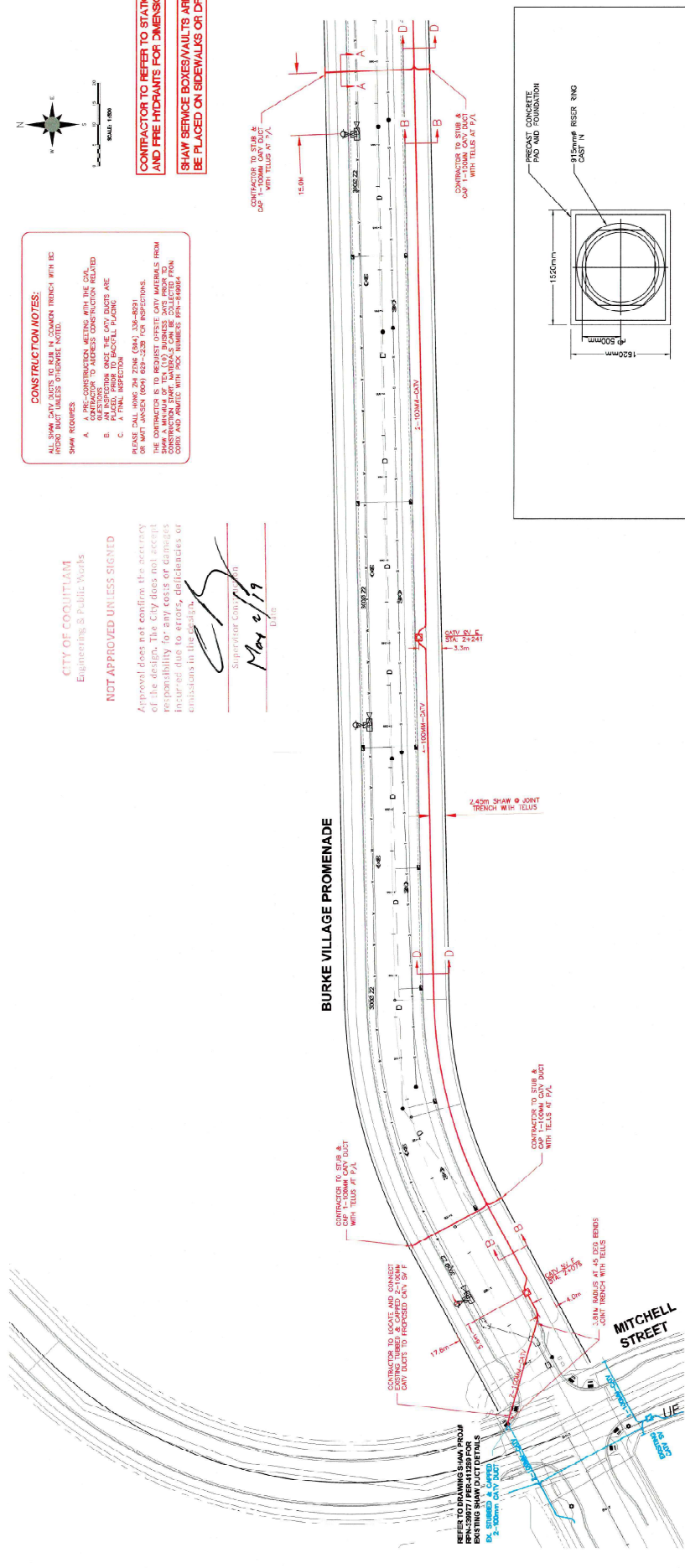
NOT APPROVED UNLESS SIGNED

Approval does not confirm the accuracy of the design. The City does not accept responsibility for any costs or damages incurred due to errors, omissions or omissions in this design.

Supervisor, Contracting
[Signature]
 May 2/19
 Date

SEE SHEET 3

BURKE VILLAGE PROMENADE



CONSTRUCTION NOTES
 1. CHANGES NOTED: COVER FROM ALL EXISTING, EXCEPT WHERE NOTED OTHERWISE.
 2. ALL MANUFACTURER BRANDS TO BE 300mm UNLESS OTHERWISE NOTED.
 3. ALL MANUFACTURER BRANDS TO BE 300mm UNLESS OTHERWISE NOTED.
 4. ALL CONCRETE PLASTER TO BE 300mm ABOVE GROUND UNLESS OTHERWISE NOTED.
 5. UTILITIES AND SERVICES ARE TO BE LOCATED BY THE CONTRACTOR TO USE A SONAR BASED GULLY TO SEA DUCT ENTRY AND BOM.
 6. CONTRACTOR TO BE RESPONSIBLE FOR OBTAINING ALL NECESSARY PERMITS.
 7. ALL MATERIAL, METHOD, AND EQUIPMENT TO BE IN ACCORDANCE WITH THE APPLICABLE AUTOMATED SPECIFICATIONS.

CONSTRUCTION NOTES
 1. CHANGES NOTED: COVER FROM ALL EXISTING, EXCEPT WHERE NOTED OTHERWISE.
 2. ALL MANUFACTURER BRANDS TO BE 300mm UNLESS OTHERWISE NOTED.
 3. ALL MANUFACTURER BRANDS TO BE 300mm UNLESS OTHERWISE NOTED.
 4. ALL CONCRETE PLASTER TO BE 300mm ABOVE GROUND UNLESS OTHERWISE NOTED.
 5. UTILITIES AND SERVICES ARE TO BE LOCATED BY THE CONTRACTOR TO USE A SONAR BASED GULLY TO SEA DUCT ENTRY AND BOM.
 6. CONTRACTOR TO BE RESPONSIBLE FOR OBTAINING ALL NECESSARY PERMITS.
 7. ALL MATERIAL, METHOD, AND EQUIPMENT TO BE IN ACCORDANCE WITH THE APPLICABLE AUTOMATED SPECIFICATIONS.

CONSTRUCTION NOTES
 1. CHANGES NOTED: COVER FROM ALL EXISTING, EXCEPT WHERE NOTED OTHERWISE.
 2. ALL MANUFACTURER BRANDS TO BE 300mm UNLESS OTHERWISE NOTED.
 3. ALL MANUFACTURER BRANDS TO BE 300mm UNLESS OTHERWISE NOTED.
 4. ALL CONCRETE PLASTER TO BE 300mm ABOVE GROUND UNLESS OTHERWISE NOTED.
 5. UTILITIES AND SERVICES ARE TO BE LOCATED BY THE CONTRACTOR TO USE A SONAR BASED GULLY TO SEA DUCT ENTRY AND BOM.
 6. CONTRACTOR TO BE RESPONSIBLE FOR OBTAINING ALL NECESSARY PERMITS.
 7. ALL MATERIAL, METHOD, AND EQUIPMENT TO BE IN ACCORDANCE WITH THE APPLICABLE AUTOMATED SPECIFICATIONS.

Issue	Date	By	For

Shaw)
 CAUTION BURIED CABLES
 CALL OR SHAW TO LOCATE
 Dig Shaw
 SANITARIUM
 604-636-2888
 604-636-2888
 604-636-2888

Issue	Date	By	For

Shaw)
 CAUTION BURIED CABLES
 CALL OR SHAW TO LOCATE
 Dig Shaw
 SANITARIUM
 604-636-2888
 604-636-2888
 604-636-2888

Issue	Date	By	For

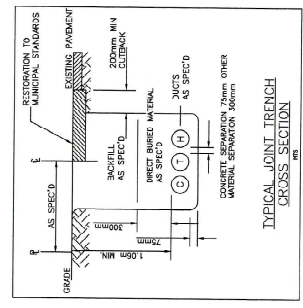
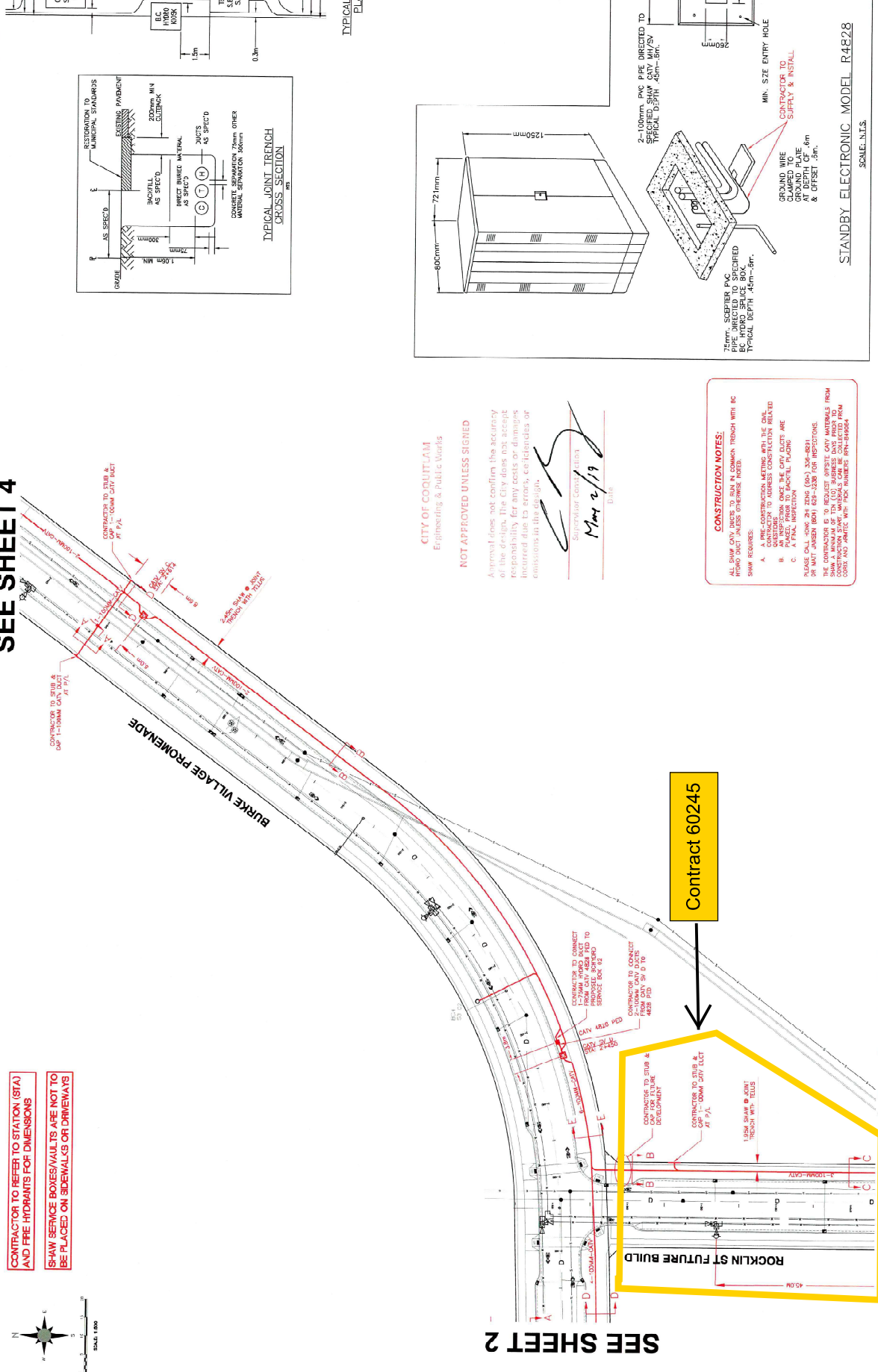
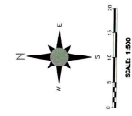
Shaw)
 CAUTION BURIED CABLES
 CALL OR SHAW TO LOCATE
 Dig Shaw
 SANITARIUM
 604-636-2888
 604-636-2888
 604-636-2888

Issue	Date	By	For

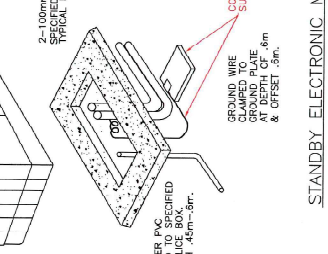
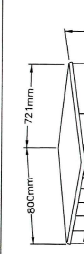
SEE SHEET 4

CONTRACTOR TO REFER TO STATION (STA) AND FIRE HYDRANTS FOR DIMENSIONS

SHAW SERVICE BOXES/VAULTS ARE NOT TO BE PLACED ON SIDEWALKS OR DRIVEWAYS



TYPICAL JOINT TRENCH PLAN DETAILS



STANDBY ELECTRONIC MODEL R4E28
SCALE: N.T.S.

CITY OF COQUITLAM
Engineering & Public Works

NOT APPROVED UNLESS SIGNED

Approval does not confirm the accuracy of the design. The City does not accept responsibility for any costs or damages incurred due to errors, omissions or commissions in this design.

[Signature]
Supervisor Construction
Mar 2/19
Date

CONSTRUCTION NOTES:
ALL SHAW CAVITY UNITS TO BE IN COMMON TRENCH WITH BC SHAW SERVICES UNLESS OTHERWISE NOTED.

A. PRE-CONSTRUCTION LETTERING WITH THE DATE OF INSTALLATION TO ADDRESS CONSTRUCTION RELATED MATTERS.
B. ALL INSPECTIONS ONCE THE CAVITY DUCTS ARE INSTALLED TO BE DONE AT A FINAL INSPECTION.
C. A FINAL INSPECTION.
PLEASE CALL 3606 247 ZENO (604) 330-8831 OR WALT JENSEN (604) 698-2238 FOR INSPECTIONS.

SHAW CONTRACTORS TO INCLUDE BUREAU OF STANDARDS (B.S.) CONSTRUCTION DRAWINGS, MATERIALS CAN BE COLLECTED FROM SHAW TOOL CENTER WITH VAN NUMBERED PER-018604.

SEE SHEET 5

- CONSTRUCTION NOTES**
1. OTHERWISE NOTED, COVER TOP ALL SERVICES, EXCEPT WATER.
 2. MANHOLES TO BE 1000mm F.A.C. BY 11 UNLESS OTHERWISE NOTED.
 3. ALL MANUFACTURED SERVICE BOXES TO BE INSTALLED A MINIMUM OF 300mm ABOVE GRADE UNLESS OTHERWISE NOTED.
 4. ALL CONCRETE PLASTERS TO BE 200mm ABOVE GRADE UNLESS OTHERWISE NOTED.
 5. UTILITIES AND SERVICES ARE TO BE CONSTRUCTED TO USE A 150mm TRENCH UNLESS OTHERWISE NOTED.
 6. CONTRACTOR TO PROVIDE PERMANENT, IMPERMEABLE RECEIVERS TO RECEIVE ALL SURFACE WATER.
 7. ALL MATERIALS, LABOR AND CONSTRUCTION TO BE IN ACCORDANCE WITH THE APPROVED AUTHORITY SPECIFICATIONS.

8. THE CONTRACTOR SHALL BE RESPONSIBLE FOR THE PROTECTION OF ALL EXISTING UTILITIES AND SERVICES UNLESS OTHERWISE NOTED.
9. ALL PREPARED MANHOLES AND SERVICE VAULTS TO BE INSTALLED A MINIMUM OF 300mm ABOVE GRADE UNLESS OTHERWISE NOTED.
10. CONTRACTOR MUST CONTACT A TELLUS INSPECTOR 48 HRS. PRIOR TO COMMENCING WORK TO ADDRESS CONCERNS.
11. CONTRACTOR TO PROVIDE WITH CORP IN ALL MAINWAY AND SERVICE VAULTS, TRENCHES AND SERVICE VAULTS.
12. ALL SERVICES ARE TO BE CONSTRUCTED TO USE A 150mm TRENCH UNLESS OTHERWISE NOTED.
13. SHAW CHALLENGERS/FORMS: TRAMAS GALLERY 604-493-3311
14. SHAW CHALLENGERS/FORMS: TRAMAS GALLERY 604-493-3311
15. SHAW CHALLENGERS/FORMS: TRAMAS GALLERY 604-493-3311

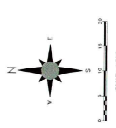
CAUTION BARED CABLES
CALL OR SHAW TO LOCATE

Shaw
900-868-2238
1-800-868-2238

Shaw
900-868-2238
1-800-868-2238

ISSUE FOR APPROVAL	NO.	DATE	BY
	A	9/23/18	N. DAVO
			P. BETTA
		9/23/18	

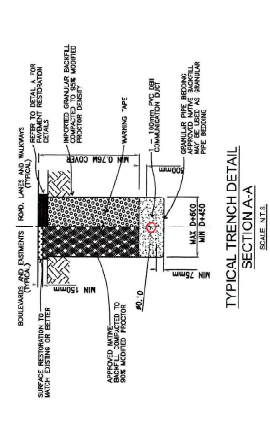
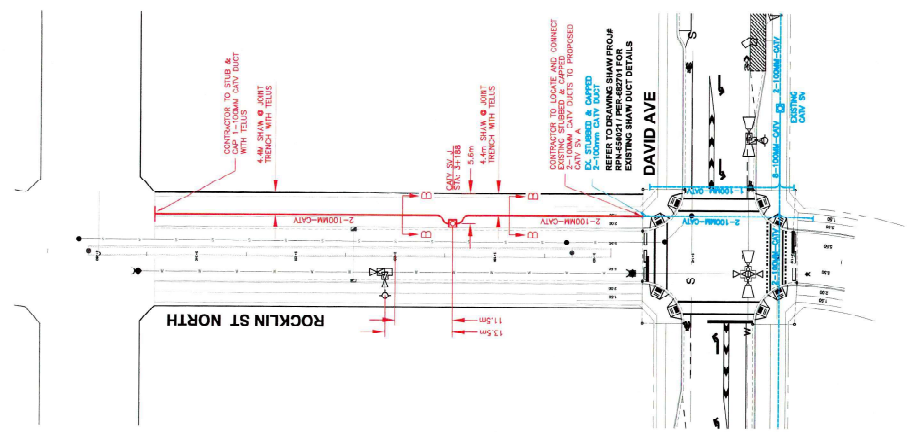
Project: Burke Village Promenade
Design: N. DAVO
Drawn: P. BETTA
Location: Burke Village Promenade
Drawing No: RPN-60245
Scale: AS SHOWN
Project No: RPN-60245
Sheet No: 2 of 2



CONTRACTOR TO REFER TO STATION (STA) AND FIRE HYDRANTS FOR DIMENSIONS

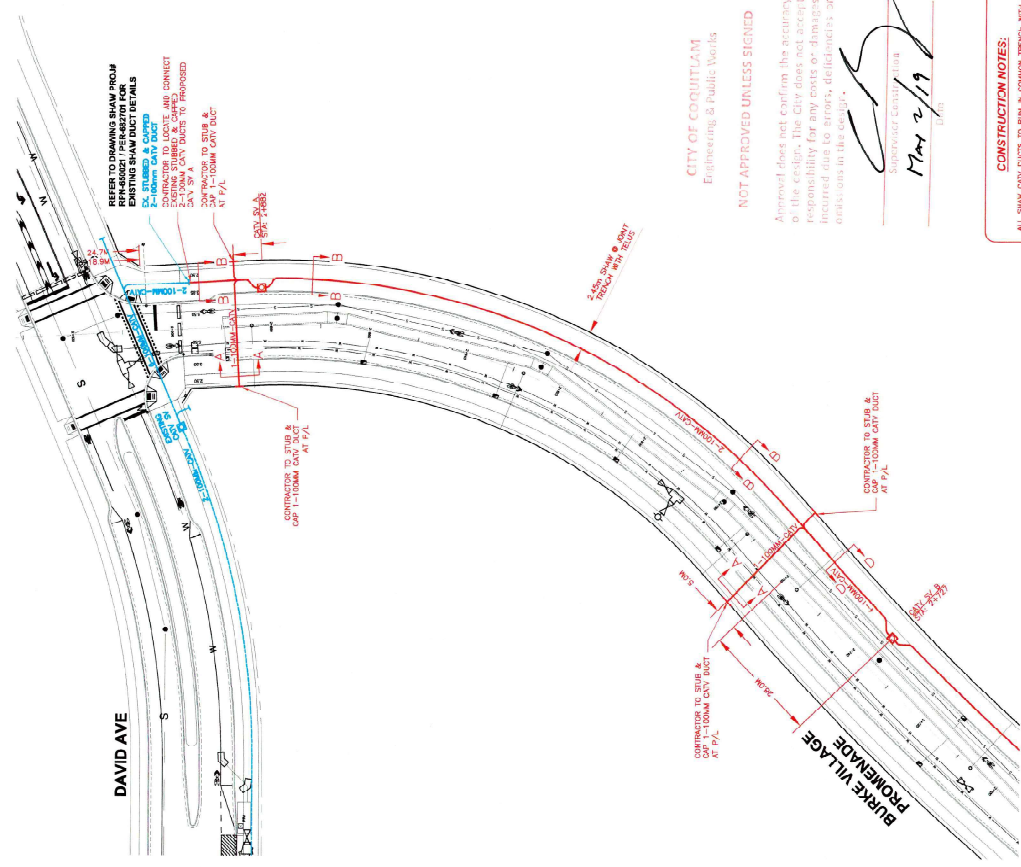
SHAW SERVICE BOXES/WALLS ARE NOT TO BE PLACED ON SIDEWALKS OR DRIVEWAYS

SEE UPPER RIGHT FOR CONTINUITY



- MINIMUM CONCRETE COVER 100MM ALL SECTIONS EXCEPT WHERE SHOWN OTHERWISE
- SHAW SERVICE BOX
- CONCRETE SERVICE BOX
- CONCRETE SERVICE BOX
- CONCRETE SERVICE BOX
- CONCRETE SERVICE BOX
- CONCRETE SERVICE BOX
- CONCRETE SERVICE BOX

SEE LEFT BOTTOM FOR CONTINUITY



SEE SHEET 3

CONSTRUCTION NOTES:

ALL SHAW CITY DUCTS TO RUN IN COMMON TRENCH WITH 65 SHAW REQUIRES:

- A PRE-CONSTRUCTION MEETING WITH THE CIVIL ENGINEER TO ADDRESS CONSTRUCTION RELATED QUESTIONS
- INSTALLATION OF SHAW CITY DUCTS ARE TO BE PLACED PRIOR TO FINISHING PAVING
- A FINAL INSPECTION

ON 10/11/2018 AT 10:00 AM, THE CONTRACTOR IS TO PROTECT EXISTING CITY MATERIALS FROM SHAW A TRENCH OF 1-100MM CITY DUCT PROP TO BE PLACED PRIOR TO FINISHING PAVING. THE CONTRACTOR SHALL OBTAIN AND MAINTAIN WITH POI NUMBERS RP1-442034.

CITY OF COQUITLAM
Engineering & Public Works

NOT APPROVED UNLESS SIGNED

Approved does not confirm the accuracy of the design. The Contractor shall accept responsibility for any design errors or omissions incurred due to errors, omissions or deviations in the design.

[Signature]
MAY 2/19

Shaw)

100% POLYPROPYLENE
600-460-0000 B.C.
V.P. 301

Dig Shaw

CALL DDD 8-AW TO LOCATE

CAUTION BARRIERS
CALL DDD 8-AW TO LOCATE

ALL TRENCHES SHALL BE 100MM PAV. OR 11 UNLESS OTHERWISE NOTED.

CONTRACTOR MUST CONTACT A BELLS INSPECTOR 48 HRS PRIOR TO PLACE (OPEN) BRANDED PAVEN COVD IN ALL MAINWAY AND SERVICE LOCATIONS. BRANDED PAVEN COVD IS TO BE PLACED PRIOR TO CONSTRUCTION.

SHAW SERVICE BOXES ARE TO BE PLACED PRIOR TO FINISHING PAVING.

PHONE: 604-693-1021
FAX: 604-693-1021

14. BASE PROVIDED BY S.I. ENGINEERING

15. #500 - 4190

16. BURKINSON B.C. VAW

17. PHOENIX

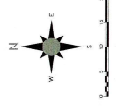
18. 504-622-2889

19. 504-622-2889

Project:	Rocklin St & Burke Village Promenade
Design:	N. DAVID
Drawn:	R. BETTA
Date:	8/23/18
Drawn:	SERVICE BOX AND DUCT INSTALLATION DETAILS
Scale:	AS SHOWN
Project No:	18004
Drawn No:	18004
Sheet:	32 - 02/068
Revision:	1 of 1

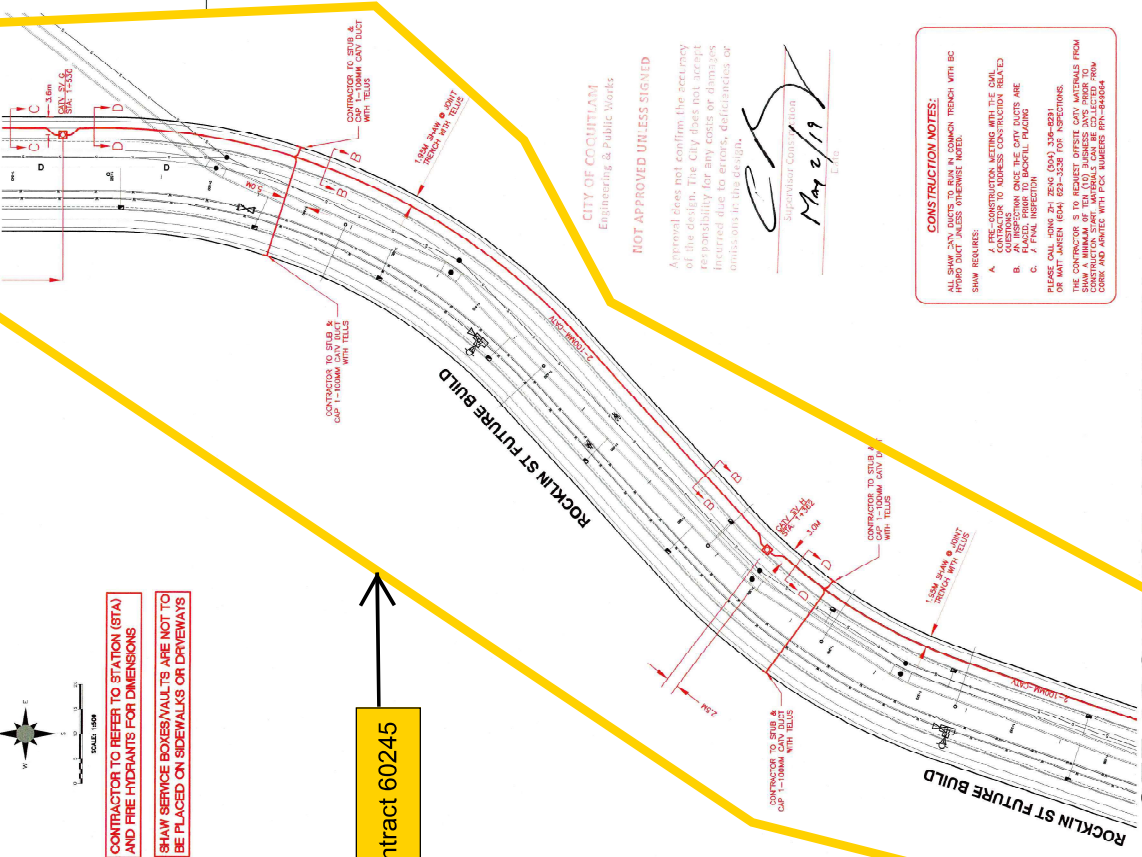
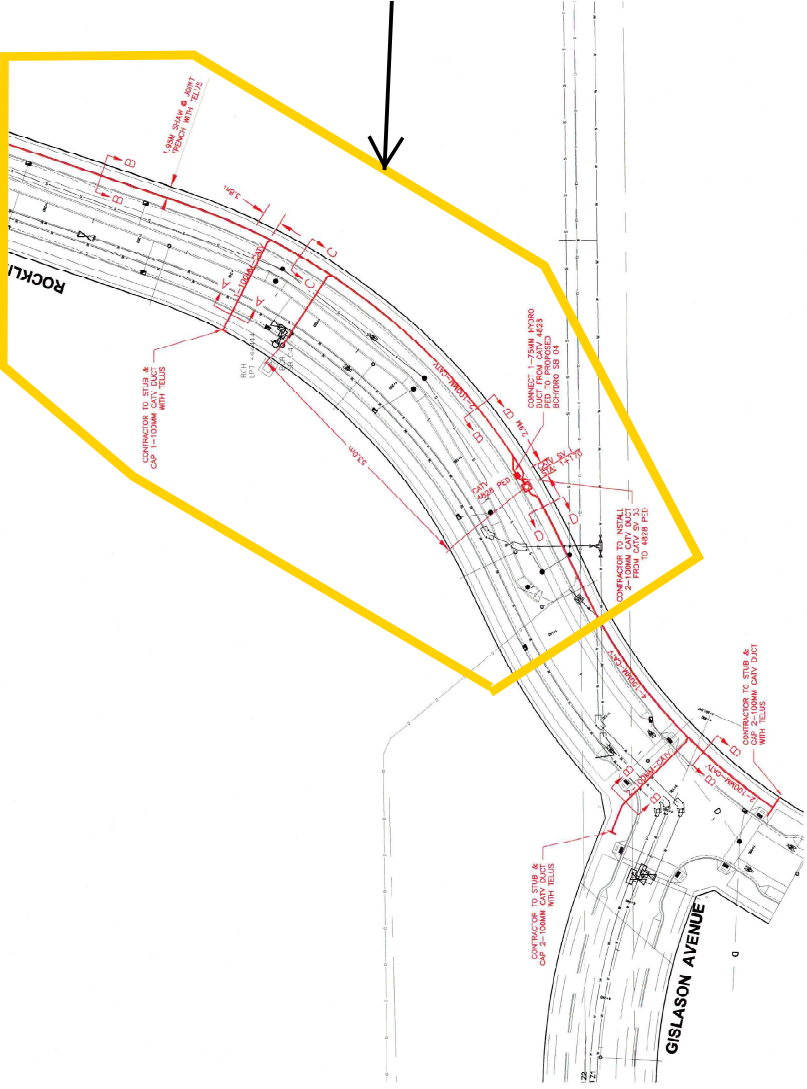
SEE BOTTOM FOR CONTINUITY

SEE SHEET 3



CONTRACTOR TO REFER TO STATION (STA) AND FIRE HYDRANTS FOR DIMENSIONS
 SHAW SERVICE BOXES SHALL NOT BE PLACED ON SIDEWALKS OR DRIVEWAYS

Contract 60245

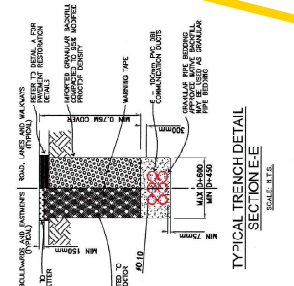
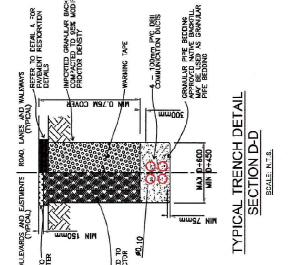
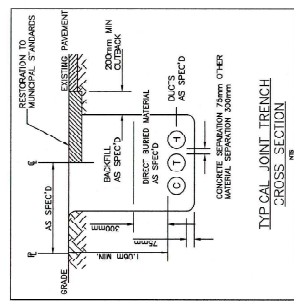


CITY OF COQUITLAM
 Engineering & Public Works
 NOT APPROVED UNLESS SIGNED

Agreement does not confirm the accuracy of the design. A city does not accept responsibility for any costs or damages incurred due to errors, omissions or misstatements in the design.

Contractor
 May 2/19

CONSTRUCTION NOTES:
 ALL SHAW SERVICE BOXES SHALL BE INSTALLED WITHIN TRENCH WITH BRICK AND ANTI-TILT WALLS. INTERFERE NOTED.
 SHAW REQUIRE:
 A. PRE-CONSTRUCTION MEETING WITH THE CIVIL ENGINEER TO ADDRESS CONSTRUCTION RELATED CONCERNS.
 B. ALL SHAW SERVICE BOXES SHALL BE INSTALLED WITHIN TRENCH WITH BRICK AND ANTI-TILT WALLS.
 C. 7 FINAL INSPECTION
 PLEASE CALL SHAW 24 HOURS PRIOR TO THE START OF WORK TO REQUEST SERVICE BOX MATERIALS FROM SHAW A MINIMUM OF 10 BUSINESS DAYS PRIOR TO THE START OF WORK.
 THE CONTRACTOR IS TO REQUEST SERVICE BOX MATERIALS FROM SHAW A MINIMUM OF 10 BUSINESS DAYS PRIOR TO THE START OF WORK.
 SHAW A MINIMUM OF 10 BUSINESS DAYS PRIOR TO THE START OF WORK.
 SHAW A MINIMUM OF 10 BUSINESS DAYS PRIOR TO THE START OF WORK.
 SHAW A MINIMUM OF 10 BUSINESS DAYS PRIOR TO THE START OF WORK.



SEE ABOVE FOR CONTINUITY

CONSTRUCTION NOTES

- MINIMUM COVER DEPTH FOR ALL SECTIONS, EXCEPT WHERE OTHERWISE NOTED.
- MINIMUM COVER DEPTH TO BE 100mm P.C. OR 11 UNLESS OTHERWISE NOTED.
- MANUFACTURER BRANDS TO BE OSMI UNLESS OTHERWISE NOTED.
- ALL CONCRETE JOINTS TO BE 200mm WIDE GROUPE UNLESS OTHERWISE NOTED.
- CONTRACTOR IS TO PROVIDE THE LOCATIONS OF ALL EXISTING UTILITIES AND SERVICES AT THE TIME OF CONSTRUCTION.
- DEPARTMENT OF PUBLIC WORKS TO BE NOTIFIED 72 HOURS PRIOR TO STARTING WORK.
- ALL APPROVALS MUST BE OBTAINED PRIOR TO THE START OF WORK.

14. BASE PROVIDED BY SHAW
 15. SHAW ENGINEERING LTD.
 16. SHAW ENGINEERING LTD.
 17. SHAW ENGINEERING LTD.
 18. SHAW ENGINEERING LTD.
 19. SHAW ENGINEERING LTD.
 20. SHAW ENGINEERING LTD.

Shaw)
 CAUTION BURIED CABLES
 CALL DO SHAW TO LOCATE
Dig Shaw
 Call now to locate your underground utilities
 900-1077 X COVADIA ST.
 VANCOUVER, BC
 V6C 3S6

Project No.	AS 2000
Project Name	Rocklin St & Buxs Widge Promenade
Location	Coquitlam
Drawing No.	PP-60245
Scale	1:1000
Sheet No.	1 OF 1
Revision	
Issue For Approval	ISSUE FOR APPROVAL
No.	1
Date	05/22/19
Location	Rocklin St & Buxs Widge Promenade
Project	PP-60245
Sheet	1 OF 1
Revision	

PERMIT NO. 18 116730 UP

Our file: 09-4500-35/18 116730 UP/1 Doc #: 3055703.v1

APPLICANT	
Name: TELUS COMMUNICATIONS INC. (FIELD OPERATIONS) – Robby Kirk	Date of Application: 18/07/2018
Address: 3777 Kingsway Ave Unit 7	
Vancouver BC V5H 3Z7	

LOCATION
BURKE MOUNTAIN PROMENADE AND ROCKLIN STREET

CONTRACTOR	
Name: TELUS COMMUNICATIONS INC. (FIELD OPERATIONS)	
Address: 3777 Kingsway Ave Unit 7	
Vancouver BC V5H 3Z7	

Type	Utility	Drawing #
Utility	Telephone	2673049U

PERMISSION IS GRANTED TO:

Construct Telephone as per drawing # 683049U submitted 18/07/2018.

Authority / Mandate for issuance of permit:

Utility Regulation By-Law No. 707 (1977)

Record drawings required: Yes

Inspection required: Yes

For inspection please call: Jim Roulette at 604-603-6232

Comments:

Approved.

Date: Aug. 16/18

Signature: 
(For the General Manager –
Engineering & Public Works)
Approved by: Chad Braley

All work must be completed in accordance with all current City adopted standards, specifications, and regulations. Contractor(s) is responsible for field verification of all existing utility locations.

**** Call BC One Call at least two full working days before you dig at 604-257-1940. ****

CONSTRUCTION NOTES:

1. ALL WORK SHALL BE PERFORMED IN ACCORDANCE WITH THE CITY OF COQUITLAM STANDARD SPECIFICATIONS FOR PUBLIC WORKS, LATEST EDITION.
2. ALL MATERIALS SHALL BE APPROVED BY THE CITY ENGINEER PRIOR TO INSTALLATION.
3. ALL WORK SHALL BE COMPLETED WITHIN THE SPECIFIED TIME FRAME.
4. ALL WORK SHALL BE COMPLETED WITHIN THE SPECIFIED BUDGET.
5. ALL WORK SHALL BE COMPLETED WITHIN THE SPECIFIED AREA.
6. ALL WORK SHALL BE COMPLETED WITHIN THE SPECIFIED LIMITS.
7. ALL WORK SHALL BE COMPLETED WITHIN THE SPECIFIED TOLERANCES.
8. ALL WORK SHALL BE COMPLETED WITHIN THE SPECIFIED QUALITY STANDARDS.
9. ALL WORK SHALL BE COMPLETED WITHIN THE SPECIFIED SAFETY REQUIREMENTS.
10. ALL WORK SHALL BE COMPLETED WITHIN THE SPECIFIED ENVIRONMENTAL REQUIREMENTS.

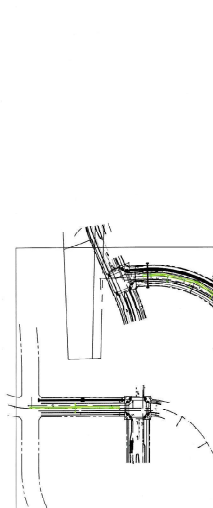
UTILITY LEGEND

1	CORNING TILES
2	ELECTRICAL UTILITY
3	TELEPHONE UTILITY
4	SEWER UTILITY
5	WATER UTILITY
6	STREET LIGHTING
7	STREET LIGHTING
8	STREET LIGHTING
9	STREET LIGHTING
10	STREET LIGHTING
11	STREET LIGHTING
12	STREET LIGHTING
13	STREET LIGHTING
14	STREET LIGHTING
15	STREET LIGHTING
16	STREET LIGHTING
17	STREET LIGHTING
18	STREET LIGHTING
19	STREET LIGHTING
20	STREET LIGHTING
21	STREET LIGHTING
22	STREET LIGHTING
23	STREET LIGHTING
24	STREET LIGHTING
25	STREET LIGHTING
26	STREET LIGHTING
27	STREET LIGHTING
28	STREET LIGHTING
29	STREET LIGHTING
30	STREET LIGHTING

CITY OF COQUITLAM
Engineering & Public Works

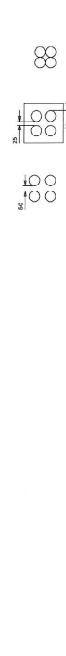
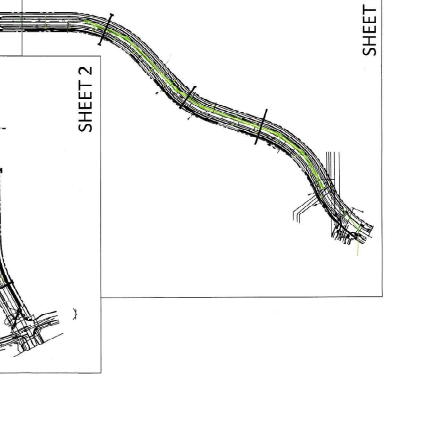
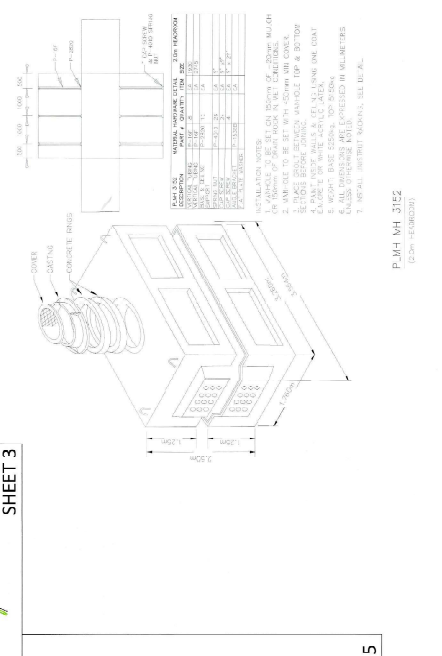
NOT APPROVED UNLESS SIGNED

Signature: [Signature]
Date: Apr 16, 2018



ITEM NO.

1. 100' x 100' x 100' CONCRETE TRENCH
2. 100' x 100' x 100' CONCRETE TRENCH
3. 100' x 100' x 100' CONCRETE TRENCH
4. 100' x 100' x 100' CONCRETE TRENCH
5. 100' x 100' x 100' CONCRETE TRENCH
6. 100' x 100' x 100' CONCRETE TRENCH
7. 100' x 100' x 100' CONCRETE TRENCH
8. 100' x 100' x 100' CONCRETE TRENCH
9. 100' x 100' x 100' CONCRETE TRENCH
10. 100' x 100' x 100' CONCRETE TRENCH
11. 100' x 100' x 100' CONCRETE TRENCH
12. 100' x 100' x 100' CONCRETE TRENCH
13. 100' x 100' x 100' CONCRETE TRENCH
14. 100' x 100' x 100' CONCRETE TRENCH
15. 100' x 100' x 100' CONCRETE TRENCH
16. 100' x 100' x 100' CONCRETE TRENCH
17. 100' x 100' x 100' CONCRETE TRENCH
18. 100' x 100' x 100' CONCRETE TRENCH
19. 100' x 100' x 100' CONCRETE TRENCH
20. 100' x 100' x 100' CONCRETE TRENCH



REVISIONS

NO.	DESCRIPTION	DATE
1	ISSUED FOR PERMIT	APR 16, 2018
2	REVISIONS	APR 16, 2018
3	REVISIONS	APR 16, 2018
4	REVISIONS	APR 16, 2018

PERMIT

DESIGN	P. J. H. JEE
DATE	APR 16, 2018
SCALE	AS SHOWN
PROJECT NO.	2018030138
DATE	APR 16, 2018
DESCRIPTION	AS SHOWN

PROPOSED UNDERGROUND CONSTRUCTION

WORKSHEET NO. 2018030138

CITY OF COQUITLAM

SYSTEM NAME: TELUS GP ENGINEERING

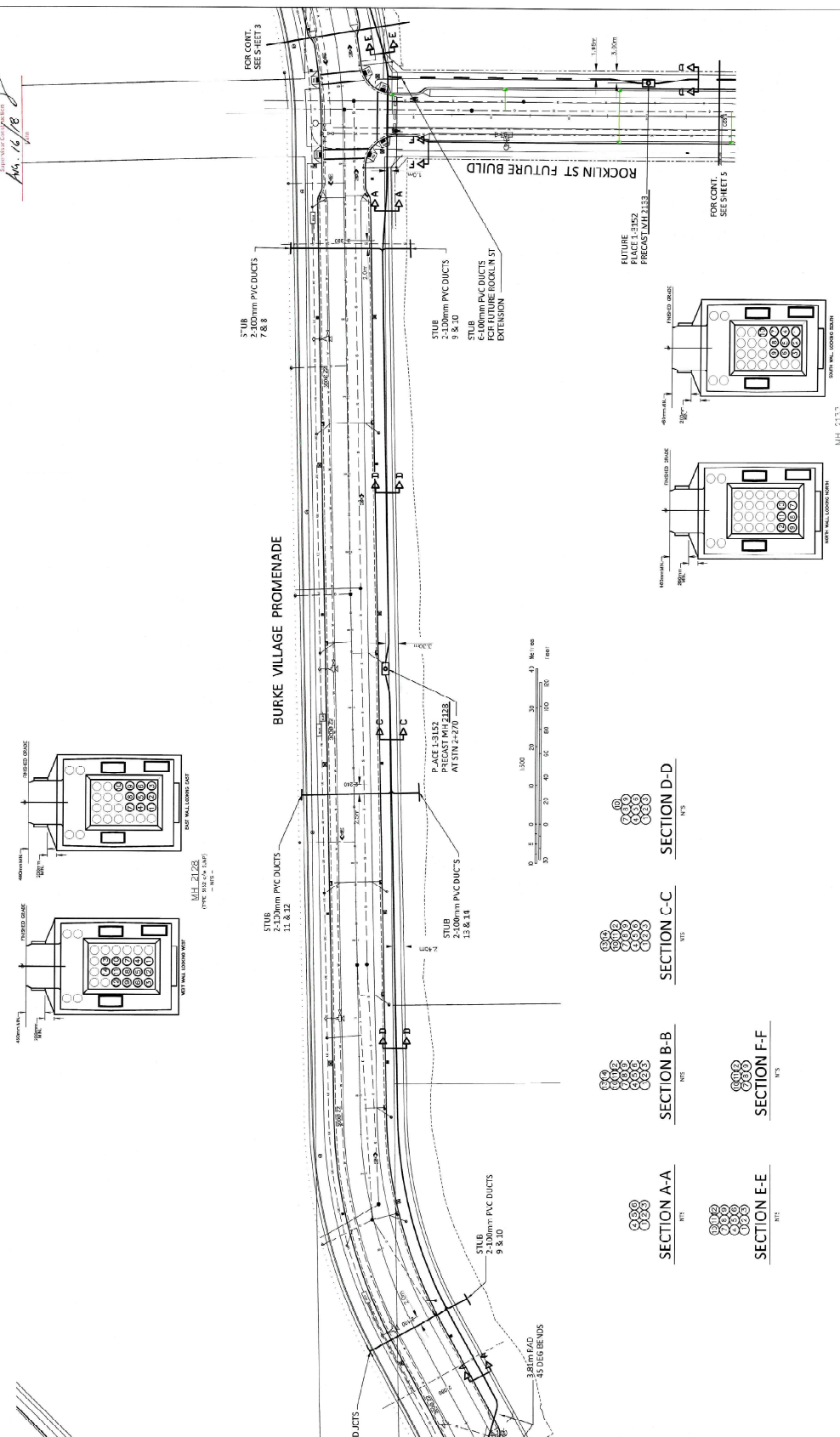
PROJECT NO.: 2018030138

DATE: APR 16, 2018

SCALE: AS SHOWN



CITY OF COQUITLAM
Engineering & Public Works
NOT APPROVED UNLESS SIGNED
Approved: _____
DATE: 04/16/18
PROJECT: BURKE VILLAGE PROMENADE
DRAWING NO: 268830490



REV.	DESCRIPTION	DATE	APPROVED
REV. 1	DESIGNATION: ADDED ROCKLIN ST NORTH ON SHEET 3	ADMITTED DATE:	
REV. 2	DESCRIPTION: MARK CHANGES TO THIS D.L. TO OPPOSITE SIDE OF SHEET ON IMP.	RE-SUB DATE:	
REV. 3	DESCRIPTION: REVISED PER COMMENTS AND MARKED ITEMS FROM 2018	RE-SUB DATE:	
REV. 4	DESCRIPTION: REVISED PER COMMENTS	DATE:	

DESIGNER	SCALE	DATE	ASSOCIATED DRAWINGS
PHL	AS SHOWN	04/16/2018	

SYSTEM NAME	PROJECT NO.	DATE
WSWD	268830490	04/16/2018

DATE	BY	FOR

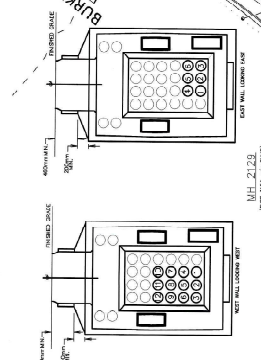
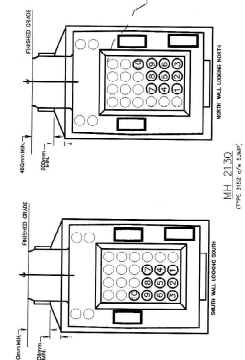
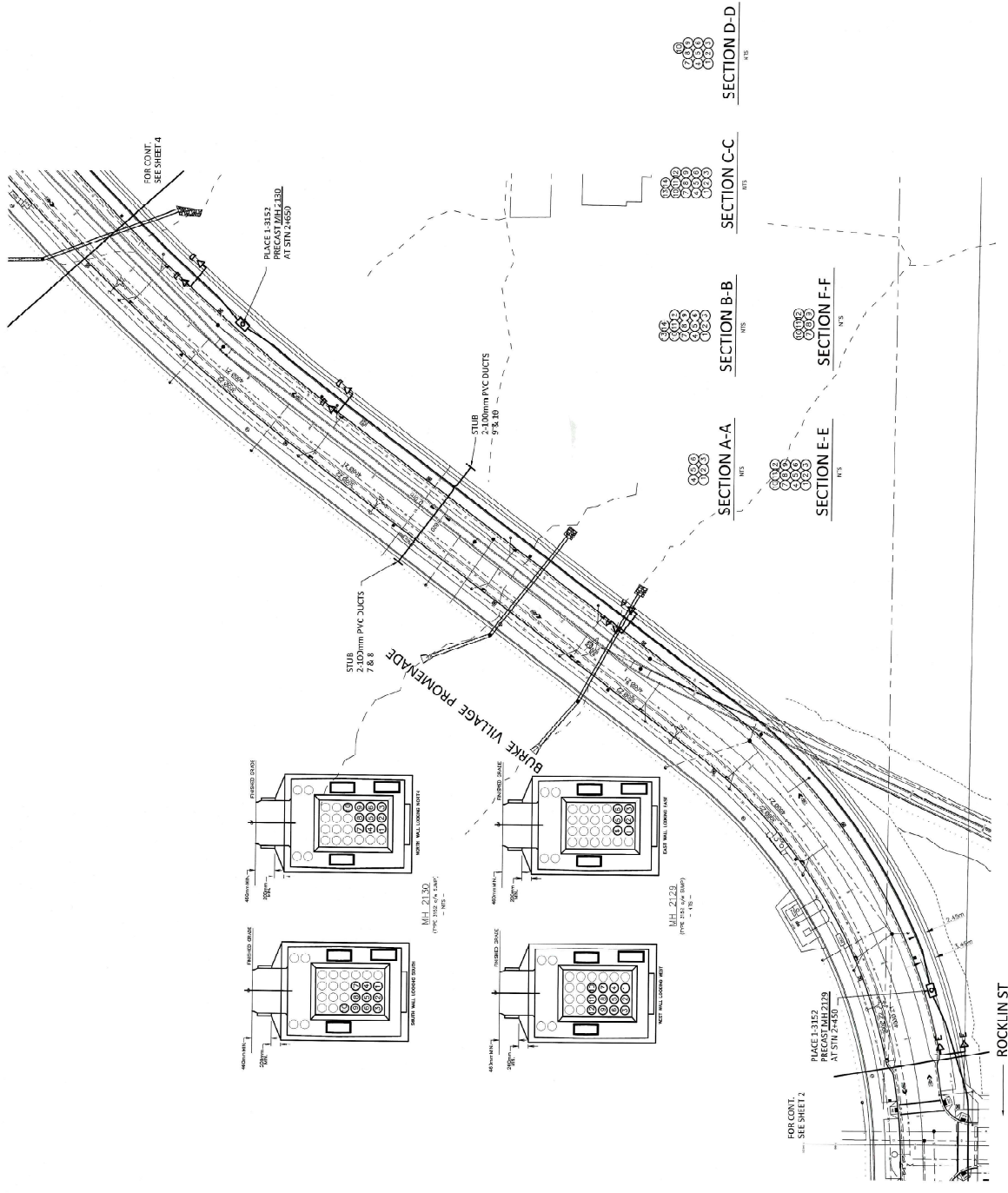
THE WORK SHOWN ON THIS DRAWING IS THE PROPERTY OF TELUS ENGINEERING INC. AND IS NOT TO BE REPRODUCED OR TRANSMITTED IN ANY FORM OR BY ANY MEANS, ELECTRONIC OR MECHANICAL, INCLUDING PHOTOCOPYING, RECORDING, OR BY ANY INFORMATION STORAGE AND RETRIEVAL SYSTEM, WITHOUT THE WRITTEN PERMISSION OF TELUS ENGINEERING INC.

PROPOSED UNDERGROUND CONSTRUCTION
BURKE VILLAGE PROMENADE AND ROCKLIN ST
CITY OF COQUITLAM
SYSTEM NAME: WSWD
SHEET 2 OF 5
TELUS ENGINEERING

CITY OF COQUILA
Engineering & Design
NOT APPROVED UNLESS SIGNED

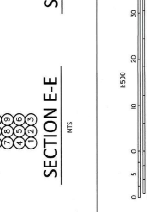
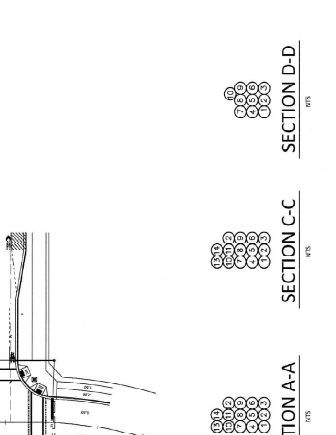
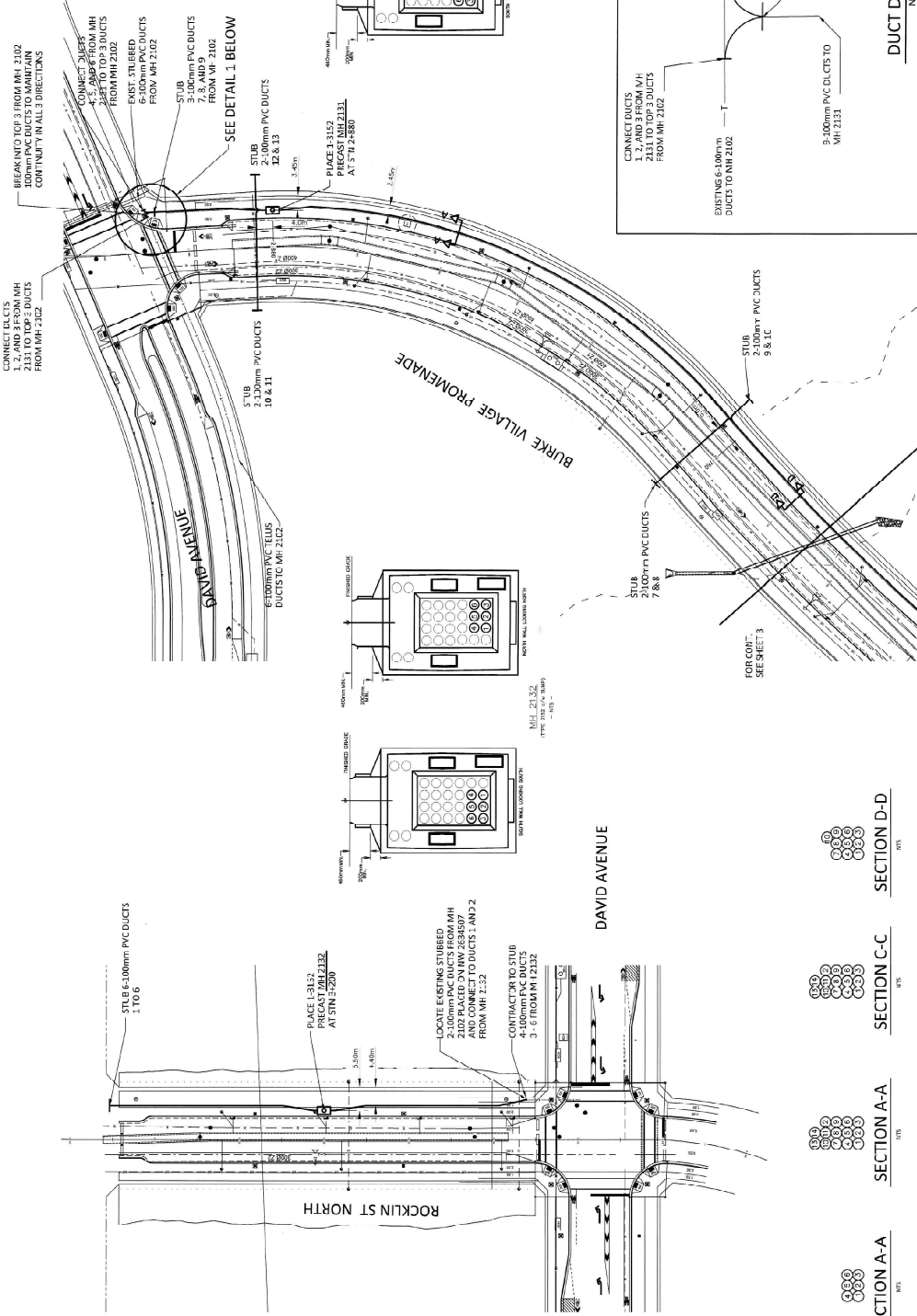
Approved for construction the accuracy of the design. This city does not accept any liability for errors or omissions in the design or construction of the project.

APPROVED FOR CONSTRUCTION
DATE: Aug. 16, 2018



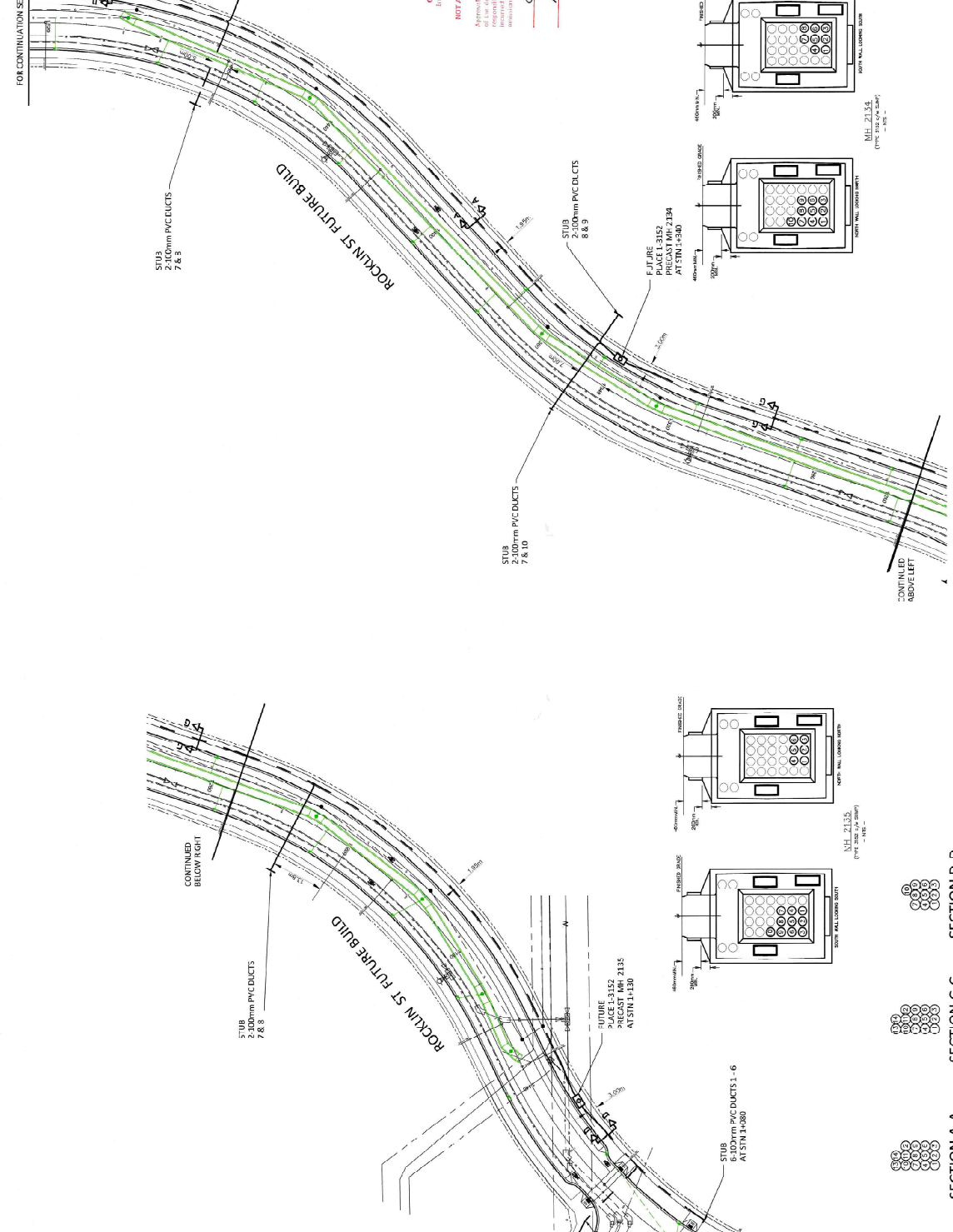
REV.	DESCRIPTION	CONSTRUCTION	POINT	DESIGNER'S MARK	DATE	SCALE	PROJECT
REV. 1	DESCRIPTION	CONSTRUCTION	POINT	DESIGNER'S MARK	DATE	SCALE	PROJECT
REV. 2	DESCRIPTION	CONSTRUCTION	POINT	DESIGNER'S MARK	DATE	SCALE	PROJECT
REV. 3	DESCRIPTION	CONSTRUCTION	POINT	DESIGNER'S MARK	DATE	SCALE	PROJECT
REV. 4	DESCRIPTION	CONSTRUCTION	POINT	DESIGNER'S MARK	DATE	SCALE	PROJECT

DATE: 08/16/2018	PROJECT: BURKE VILLAGE PROMENADE AND ROCKLIN ST
SCALE: 1"=20'	ASSOCIATED DRAWINGS:
APPROVED:	CITY OF COQUILA
DATE:	WSWD
AS CONSTRUCTED DATE:	25833029U
CONTRACTOR:	TELOS OF ENGINEERING
CONTRACT NO.:	41



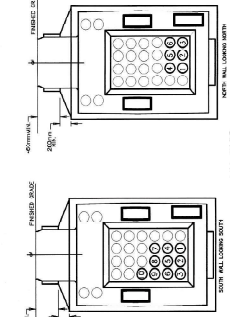
DESIGN: S. [Blank]	DATE: 09/19/18	PROJECT: PROPOSED UNDERGROUND CONSTRUCTION BURKE VILLAGE PROMENADE AND ROCKLIN ST CITY OF COQUITLAM	SHEET: 1 OF 5	SYSTEM NAME: [Blank]	A.1
PROJECT NO: 604-451-304	SCALE: 1" = 30'				
REV. 2 DESCRIPTION: MAJ 27/18 MOVED TELLER C/A TO OPPOSITE SIDE OF STREET ON BYP	SUBMITTED DATE: [Blank]	APPROVED: [Blank]	DATE: [Blank]	AS CONTRACTED DATE: [Blank]	CONTRACTOR: [Blank]
REV. 3 DESCRIPTION: [Blank]	RE-SUB DATE: [Blank]	APPROVED: [Blank]	DATE: [Blank]	AS CONTRACTED DATE: [Blank]	CONTRACTOR: [Blank]
REV. 4 DESCRIPTION: TELLER C/A W/RE CHANGE PER CITY COMMENTS	RE-SUB DATE: [Blank]	APPROVED: [Blank]	DATE: [Blank]	AS CONTRACTED DATE: [Blank]	CONTRACTOR: [Blank]
REV. 5 DESCRIPTION: [Blank]	RE-SUB DATE: [Blank]	APPROVED: [Blank]	DATE: [Blank]	AS CONTRACTED DATE: [Blank]	CONTRACTOR: [Blank]
DESIGNER: S. [Blank]	DATE: 09/19/18	CHECKED: [Blank]	DATE: [Blank]	IN CHARGE: [Blank]	DATE: [Blank]
PROJECT NO: 604-451-304	SCALE: 1" = 30'	PROJECT NAME: [Blank]	SHEET: 1 OF 5	SYSTEM NAME: [Blank]	CONTRACTOR: [Blank]

PROJECT NO: 604-451-304
 SCALE: 1" = 30'
 PROJECT NAME: [Blank]
 SHEET: 1 OF 5
 SYSTEM NAME: [Blank]
 CONTRACTOR: [Blank]
 IN CHARGE: [Blank]



CITY OF COQUITLAM
 Following is noted:
 Approval does not verify the accuracy of the drawings. The City does not accept any liability for any errors or omissions. It is the responsibility of the contractor to verify all dimensions and conditions in the field.

[Signature]
 DATE: 11/18/20



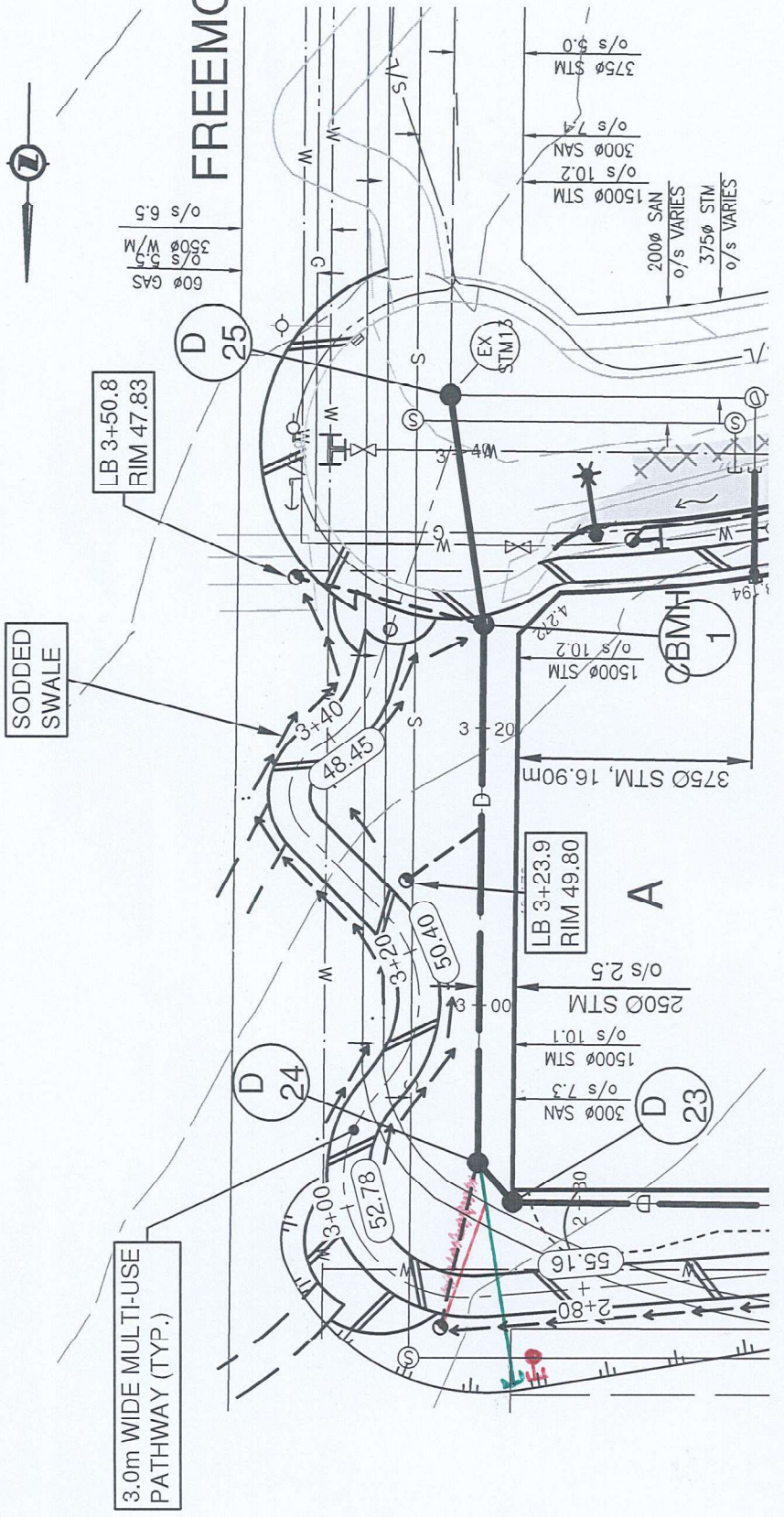
NO.	DESCRIPTION	CONSTRUCTION	PERMIT	ISSUANCE DATE	REV. 3 DATE
REV. 2	DESCRIPTION			PRJ. 648-003-2020	SCALE: 1:300
MAY 07/20	MAY 07/20	MAY 07/20	MAY 07/20	ASSOCIATED DRAWINGS	DATE: MAY 15, 2020
REV. 3	DESCRIPTION				
MAY 15 2020	MAY 15 2020	MAY 15 2020	MAY 15 2020		
REV. 1	DESCRIPTION				
MAY 15 2020	MAY 15 2020	MAY 15 2020	MAY 15 2020		
REV. 0	DESCRIPTION				
MAY 15 2020	MAY 15 2020	MAY 15 2020	MAY 15 2020		

PROJECT NAME:	PROPOSED UNDERGROUND CONSTRUCTION
PROJECT NO.:	URRKE VILLAGE PROMENADE AND ROCKIN ST
CITY:	CITY OF COQUITLAM
PROJECT ADDRESS:	2683049L
PROJECT SHEET NO.:	SHEET 8 OF 9
PROJECT SHEET TITLE:	TELEPHONE ENGINEERING
PROJECT SHEET SCALE:	A1

THE WORK PROVIDED ON THIS DRAWING SHALL BE THE RESPONSIBILITY OF THE CONTRACTOR. THE CONTRACTOR SHALL VERIFY ALL DIMENSIONS AND CONDITIONS IN THE FIELD.



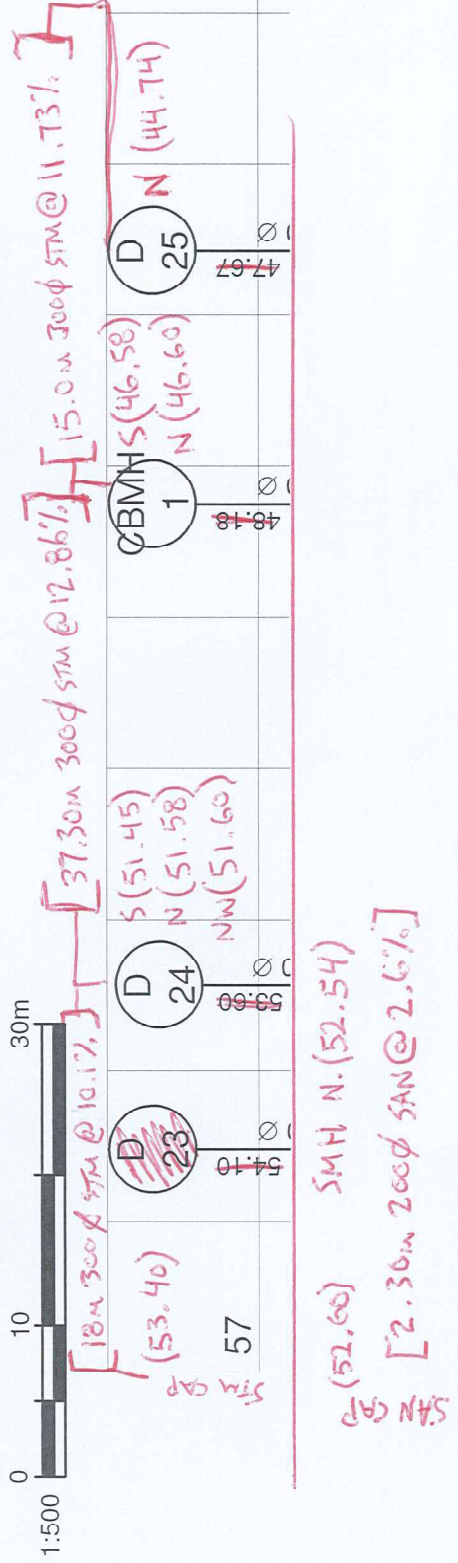
FREEMONT ST



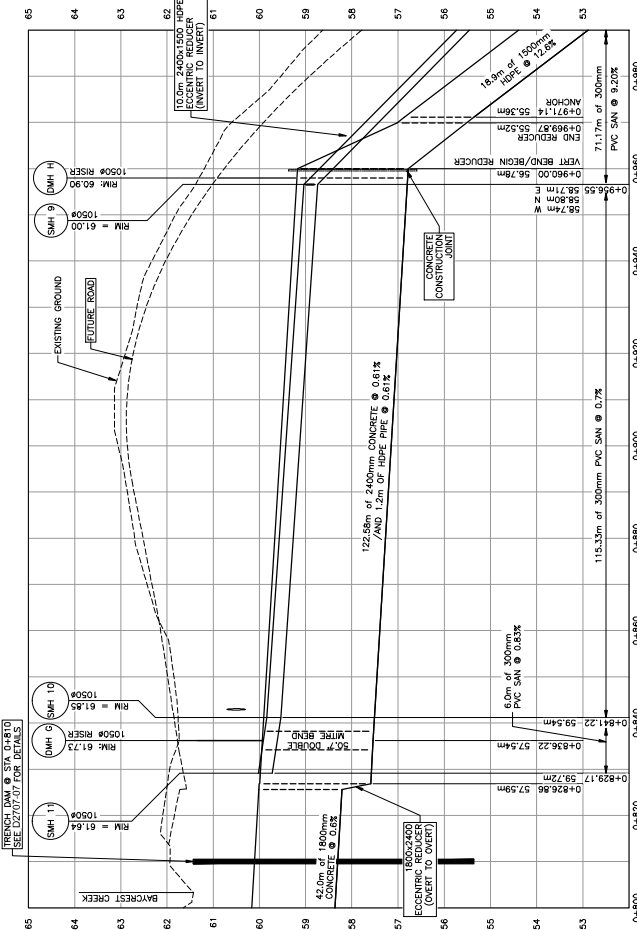
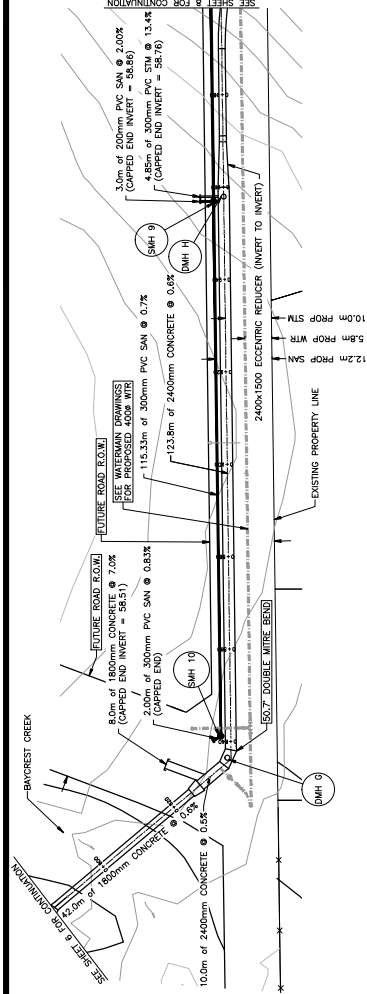
STOP

- UNL
MAI
- CAT
MAI

- CAT
CONCRET
- CONCRET
MAI
ANL
MAI
STA



SAN GAP
(52.60)
SMH N (52.54)
[2.30m 200mm SAN @ 2.6%]



SUPPLEMENTARY LEGEND:

- Edge of pavement
- Edge of sidewalk
- Edge of landscaped area
- Edge of bank
- Top of bank
- Bottom of bank
- Iron pin found
- Time, diameter indicated in 1:62.77 meters, ground elevation



EXISTING	PROPOSED	EXISTING	PROPOSED	EXISTING	PROPOSED	EXISTING	PROPOSED
Edge of pavement	Edge of pavement	Manhole	Manhole	U/G electric duct	U/G electric duct	U/G signal/light duct	U/G signal/light duct
Concrete curb	Concrete curb	Manhole with light	Manhole with light	U/G mechanical duct, MH	U/G mechanical duct, MH	Streetlight, post top	Streetlight, post top
Manhole with curb stop	Manhole with curb stop	U/G gas main and vent	U/G gas main and vent	U/G traffic signal pole	U/G traffic signal pole	Traffic signal post	Traffic signal post
Hydrant	Hydrant	U/G telecommunication, MH	U/G telecommunication, MH	U/G traffic signal pole	U/G traffic signal pole	Flare	Flare
Water line	Water line	U/G gas main and vent	U/G gas main and vent	Signal fixture	Signal fixture	Signal fixture	Signal fixture
Edge of curb	Edge of curb	U/G gas main and vent	U/G gas main and vent	Comparison traffic signal post	Comparison traffic signal post	Comparison traffic signal post	Comparison traffic signal post

Detail: All Final Bearing Rev. No. less than one indicated below

REV.	DATE	REVISION
6	JAN 23 14	AS CONSTRUCTED
5	FEB 05 13	CHANGE ORDER #2
4	AUG 10 12	ISSUED FOR CONSTRUCTION
3	JUL 05 12	ISSUED FOR TENDER
2	JAN 28 12	REVISED DESIGN ISSUE
1	JAN 09 12	PROVISIONAL DESIGN ISSUE

Coquitlam
Engineering & Public Works
3000 Calder Ave., Coquitlam, B.C. V3R 7N2

Project: **UPPER HYDE CREEK DIVERSION**
Phase: **PHASE 2 STORM PLAN & PROFILE**
Stationing: **STA 0+800 TO 1+020**

DESIGNED	CHECKED	SCALE	DATE
Car	Car	SCALE: 1:500 VERT: 1:20	DATE: MAR 14/12
Car	Car	DWG FILE: 01_Sheets (Storm)	
Car	Car	SHEET: 7	OF: 15 REV.
Car	Car		6

Coquitlam
Registered Drawing Number
D2707-04
S2007-05

SEE DWG: **D2707-11** FOR 1500MM HDPE STORM SEWER STANDARD OPERATING PROCEDURES

IMPORTANT: THIS DRAWING IS NOT TO BE USED FOR CONSTRUCTION OF THE PROJECT WITHOUT THE APPROVAL OF THE CITY OF COQUITLAM. AS THE USER ASSUMES RESPONSIBILITY FOR THE ACCURACY OF THE INFORMATION CONTAINED HEREIN, THE CITY OF COQUITLAM ASSUMES NO LIABILITY FOR THE ACCURACY OF THE INFORMATION CONTAINED HEREIN.

NOTE: THE CITY OF COQUITLAM DOES NOT GUARANTEE THE ACCURACY OF THE INFORMATION CONTAINED HEREIN. APPROXIMATE ONLY AND SHOULD BE COVERED BY A PIPE CONTRACTOR'S SURVEY. STRUCTURES ARE NOT NECESSARILY SHOWN.

THE PRODUCTIONS OF THE CITY OF COQUITLAM ARE NOT TO BE USED FOR CONSTRUCTION OF THE PROJECT WITHOUT THE APPROVAL OF THE CITY OF COQUITLAM. AS THE USER ASSUMES RESPONSIBILITY FOR THE ACCURACY OF THE INFORMATION CONTAINED HEREIN, THE CITY OF COQUITLAM ASSUMES NO LIABILITY FOR THE ACCURACY OF THE INFORMATION CONTAINED HEREIN.

DESIGNED CIB	SCALE 1:500	DATE MAY 14/12
DRAWN CIB	DWG FILE 01_Sheets (Storm)	
CHECKED CIB	SHEET 7	OF 15
APPROVED		REV. 6

Project
UPPER HYDE CREEK DIVERSION

Engineering & Public Works
3000 Gallop Rd., Coquitlam, B.C. V8K 7W6

REV.	DATE	REVISION
6	JAN 23 14	AS CONSTRUCTED
5	FEB 05 13	CHANGE ORDER #2
4	JUL 05 12	ISSUED FOR CONSTRUCTION
3	JUL 05 12	ISSUED FOR TENDER
2	JUN 28 12	REVISED DESIGN ISSUE
1	JAN 09 12	PRELIMINARY DESIGN ISSUE

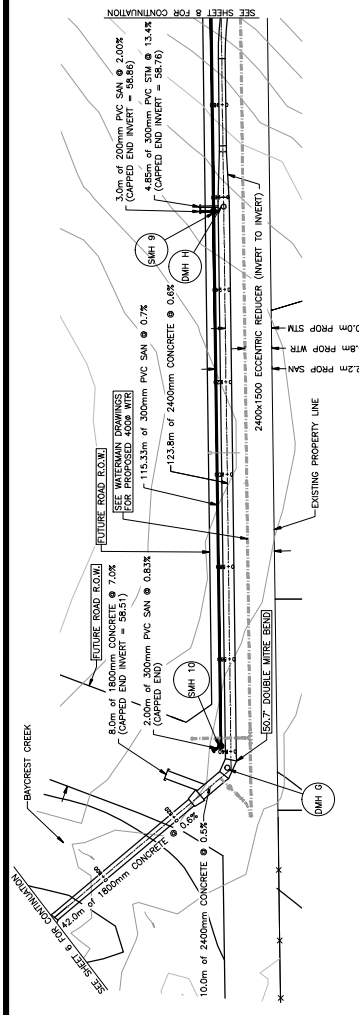
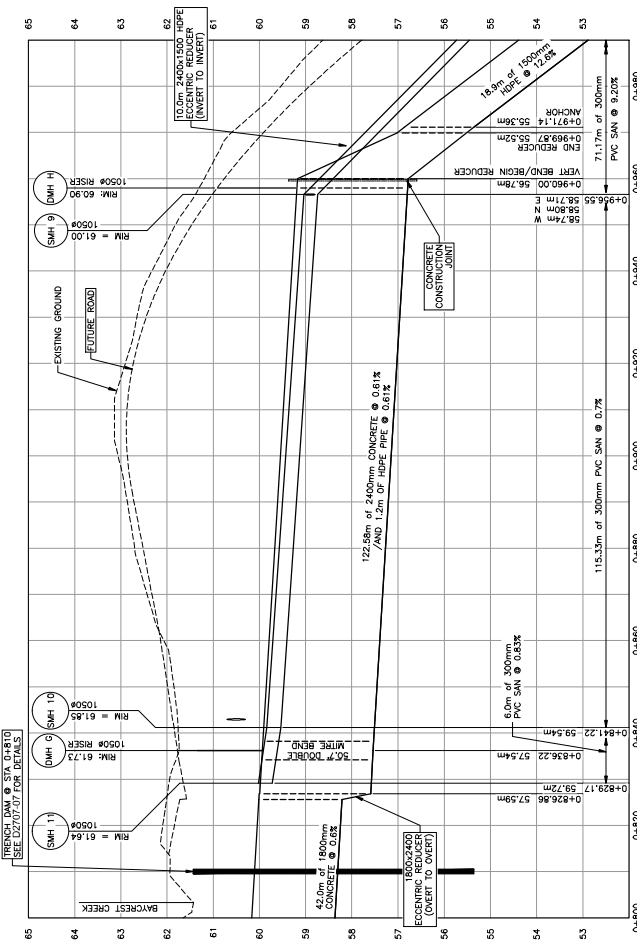
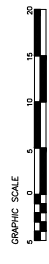
Design All Final Bearing Rev. No. less than one indicated below

EXISTING	PROPOSED	EXISTING	PROPOSED	EXISTING	PROPOSED
Edge of pavement	Edge of pavement	Drainage street, MH	Drainage street, MH	U/G signal/light duct	U/G signal/light duct
Concrete curb	Concrete curb	Catch basin, top view	Catch basin, top view	Traffic signal pole	Traffic signal pole
Manhole	Manhole	Catch basin, side view	Catch basin, side view	U/G electric duct, MH	U/G electric duct, MH
Hydrant	Hydrant	Skewer	Skewer	U/G gas main and vent	U/G gas main and vent
Water line	Water line	City box with light	City box with light	Signal fixture	Signal fixture
Fire hydrant	Fire hydrant	U/G telecommunication, MH	U/G telecommunication, MH	Construction traffic sign post	Construction traffic sign post
Base of curb	Base of curb	U/G gas main and vent	U/G gas main and vent		



4500, 118th Street, S.E., V8C 6A6
1. 604-273-8888
www.isl-engineering.com

SUPPLEMENTARY LEGEND:
 - - - - - Subgrade at edge of slope
 - - - - - Edge of landscaped area
 - - - - - Top of bank
 - - - - - Bottom of bank
 - - - - - Iron pin found
 - - - - - Time, diameter indicated in 1:62.77 metre, ground elevation



IMPORTANT: THIS DRAWING IS THE PROPERTY OF THE CITY OF COQUITLAM. IT IS TO BE USED ONLY FOR THE PROJECT AND SHALL NOT BE REPRODUCED, COPIED, OR TRANSMITTED IN ANY FORM OR BY ANY MEANS, ELECTRONIC OR MECHANICAL, INCLUDING PHOTOCOPYING, RECORDING, OR BY ANY INFORMATION STORAGE AND RETRIEVAL SYSTEMS.

NOTICE: THE CITY OF COQUITLAM DOES NOT GUARANTEE THE ACCURACY OF THE INFORMATION CONTAINED IN THIS DRAWING. THE CITY OF COQUITLAM ASSUMES NO LIABILITY FOR ANY DAMAGES, INCLUDING CONSEQUENTIAL DAMAGES, ARISING FROM THE USE OF THIS DRAWING.

NOTE: THE CITY OF COQUITLAM DOES NOT GUARANTEE THE ACCURACY OF THE INFORMATION CONTAINED IN THIS DRAWING. THE CITY OF COQUITLAM ASSUMES NO LIABILITY FOR ANY DAMAGES, INCLUDING CONSEQUENTIAL DAMAGES, ARISING FROM THE USE OF THIS DRAWING.

THE PROJECT IS GUARANTEED BY THE CITY OF COQUITLAM. THE CITY OF COQUITLAM ASSUMES NO LIABILITY FOR ANY DAMAGES, INCLUDING CONSEQUENTIAL DAMAGES, ARISING FROM THE USE OF THIS DRAWING.

