



Addendum No. 2

City of Coquitlam
Tender 84499

Nelson & Como Creek Flood Boxes

Issue Date: July 07, 2021

(Consists of 6 Pages)

Tenderers shall note the following amendments to the **CONTRACT DOCUMENT** as follows:

1. Refer to: FORM OF TENDER

REMOVE: **Appendix 1** (Schedule of Quantities & Prices)

REPLACE WITH: **REVISED – APEENDIX 1 – REVISION NO. 1**

2. Refer to: SUPPLEMENTARY CONTRACT SPECIFICATIONS 00 72 43S

ADD TO 1.01 (5): “Additional Insured” parties will be:

- Balaclava Holdings Ltd. 1050 United Blvd. Coquitlam, BC
- Stella Jones Inc. 25 Braid Street Coquitlam, BC

ADD TO 1.02: If final project approval is not granted by Federal and Provincial Environmental Departments, then the Tender will be canceled. The City will not be responsible to pay any costs associated with a canceled tender.

DELETE 1.06

REPLACE WITH: The hours of work shall be from **0700 h to 1900 h** inclusive Monday to Friday and **0900 h to 1700 h** inclusive Saturdays. The Contractor must schedule his work within these hours or obtain written authorization from the Contract Administrator to vary said hours.

Written permission from the Contract Administrator will be required for any works to be performed on Sunday.

In case the Contractor requests to work on a day which is a Statutory Holiday, they shall provide the Contract Administrator a request in writing at least (4) days in advance of such holiday, stating those places where said work is to be conducted and why it is of benefit to the City and its citizens. In case the Contractor fails to give such notice in advance of any Statutory Holiday, no work within the terms of the contract shall be considered.

The cost of inspections on weekend or on a Statutory Holiday by City staff/s will be at Contractor's expense **unless approved in writing otherwise by Contract Administrator.**

DELETE 3.01 (6.)

REPLACE WITH: A copy of portions of your Health and Safety Plan including the Title Page, Table of Contents, and portion showing latest revision date. Also include COVID-19 Pandemic Prevention Policy and Procedures (4P) document as detailed in IT 15.4.

3. Refer to: SUPPLEMENTARY CONTRACT SPECIFICATIONS 01 53 01S

DELETE 1.9.2

REPLACE WITH: Payment includes the preparation and implementation of the approved Dewatering and Site Isolation Plan, including labour, material, equipment, including site isolation, dewatering, blocking, diverting; and

Bypass pumping up to seasonally average wet weather flows defined at 2.0 m³/s at Como Creek and 0.5 m³/s at Nelson Creek including supply, installation and removal of the temporary system, all equipment, materials, plugs and all associated works; and

If flows significantly exceed seasonal wet weather averages then the contractor is responsible for removal and re-instatement of stream isolation, blocking, pumps, form work, ESC, ect. to allow storm flows to pass without degradation of stream banks, existing infrastructure, or partially constructed infrastructure. In the event of a short notice storm, removal and re-instatement will be paid under Force Account; and

Supply, installation and removal of temporary isolation facilities, as directed by the Contract Administrator and Environmental Monitor, to facilitate fish salvage operations. Fish salvage will be undertaken by the Environmental Monitor.

60% will be paid after installation and commencement of the system, and 40% will be paid after removal.

4. Refer to: SUPPLEMENTARY CONTRACT SPECIFICATIONS 01 57 01S

CORRECT 1.0.6: Re-number "Environmental Approvals" clause number to **1.0.5**

CORRECT 1.0.7: Re-number "Environmental Consultants" clause number to **1.0.6**

5. Refer to: SUPPLEMENTARY CONTRACT SPECIFICATIONS 33 42 13S

CORRECT 1.5.1: Re-number 1.5.1 "Measurement and Payment" to **1.5.7** as an added clause.

6. Refer to: SUPPLEMENTARY CONTRACT SPECIFICATIONS 33 44 01S

DELETE 1.5.4

REPLACE WITH: Payment for removal and/or abandon of existing catch basins, lawn basins, and manholes includes excavation, disposal off site of all components, disposal of all unsuitable material, import backfill, plugs, caps, stubs, compaction and all necessary work as shown on Contract Drawing and as specified in the Schedule of Quantities and Prices.

7. Refer to: **Appendix A – Traffic Management Detail Specifications**

DELETE 3.1.1 in Appendix 1 “Contract Hours of Work and Traffic Restrictions”

REPLACE WITH: Unless there are other contract restrictions for work times, work can be performed during the normal weekday working hours of **07:00 hrs to 19:00 hrs**.

8. Refer to: **Appendix G – Flood Gate Shop Drawings**

DELETE: G.H. DWG# 01 and 02

REPLACE WITH: G.H. DWG# 01 and 02

Note: These replacement drawings are the same as the originals, the only difference is they have had review stamps and notations removed or repositioned to see underlying information. Both locations will require (2) gates hinged on the outside (French door style).

CONTRACTOR QUESTIONS & CLARIFICATIONS

Q1: What are the approximate dry weather summer flows?

A1: Approximate summer dry weather flow at Nelson Creek is 20 litres per second.
Approximate summer dry weather flow at Como Creek is 300 litres per second.

End of Addendum No. 2

Tenderers shall take into account the content of this Addendum in the preparation and submission of the Tender which will form part of the contract and should be acknowledged on the Tender form where indicated.

Upon submitting a Tender, Tenderers will be deemed to have received all addenda and considered the information for inclusion in the Tender submitted.

Issued by:

M. Pain
Purchasing Manager
Email: bid@coquitlam.ca

REVISED - APPENDIX 1 - REVISION NO. 1
FORM OF TENDER**Contract 84499**
Nelson & Como Creek Flood Boxes**SCHEDULE OF QUANTITIES AND PRICES**

(see paragraph 5.3.1 of the Instruction to Tenderers)

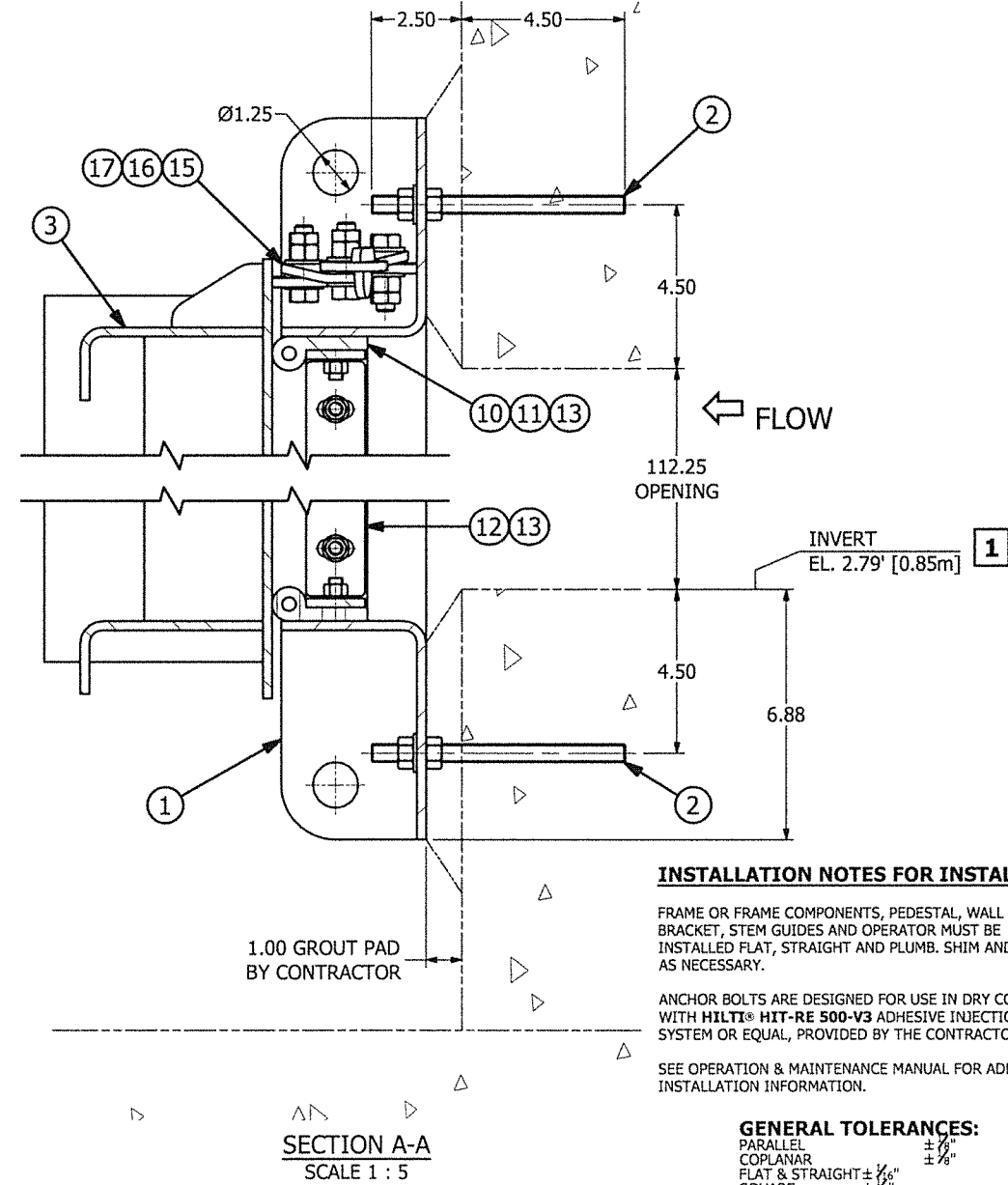
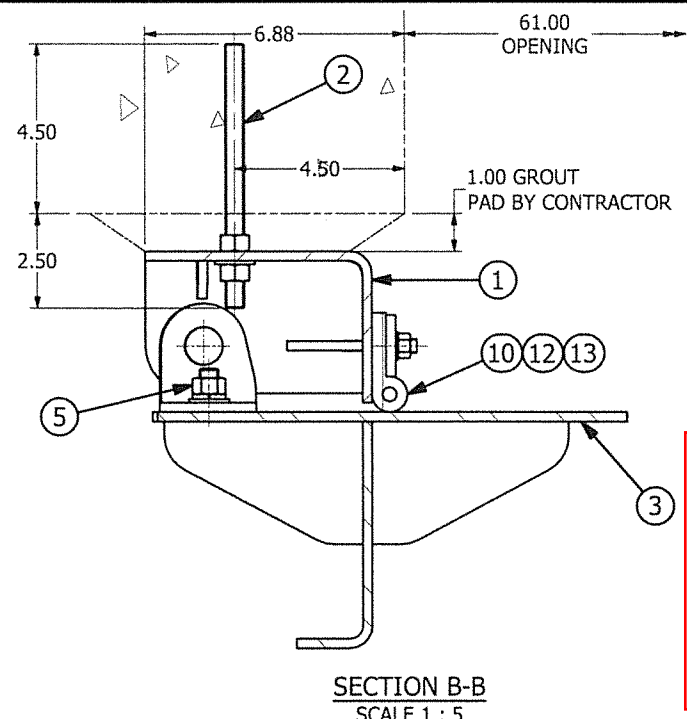
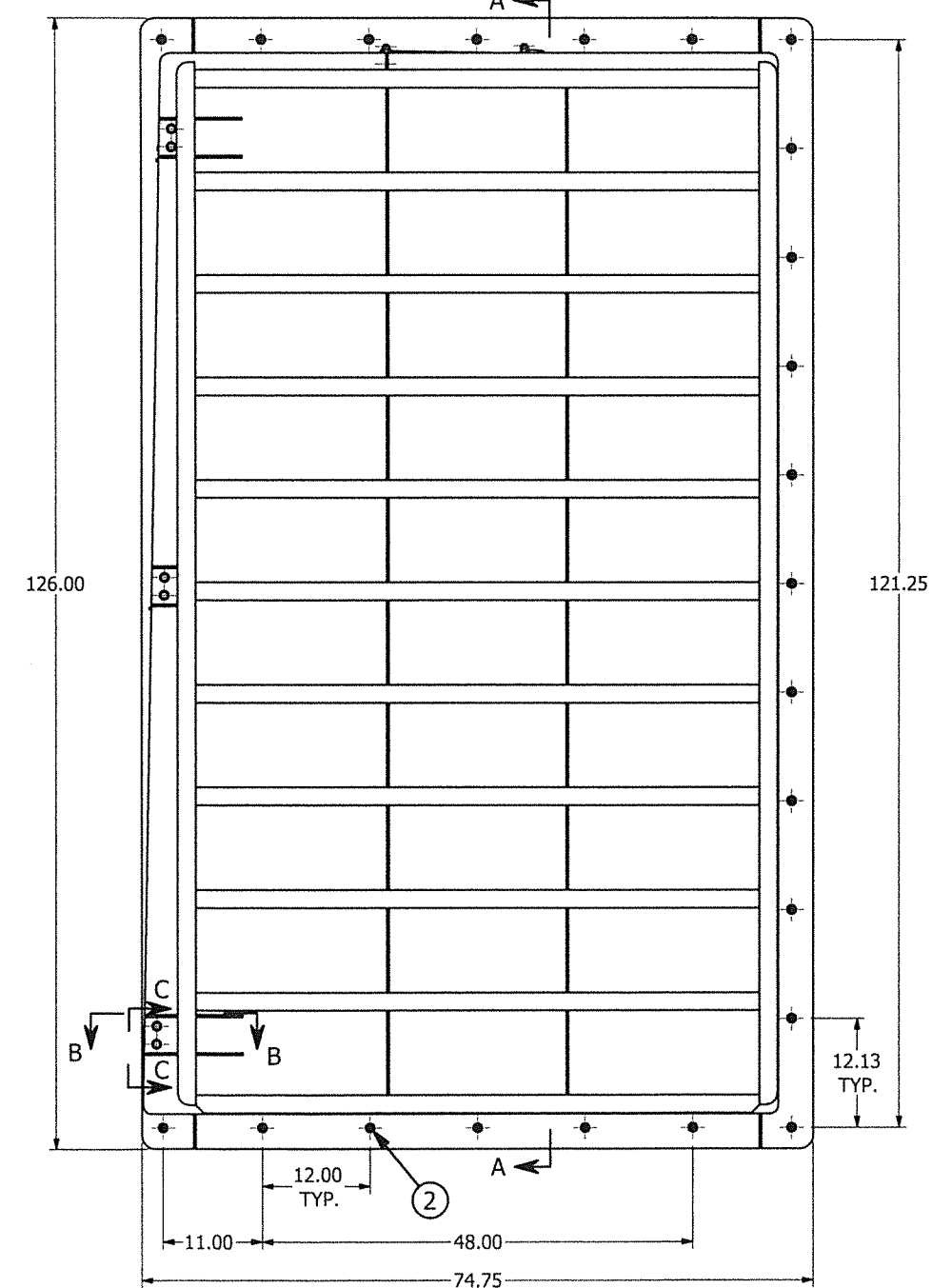
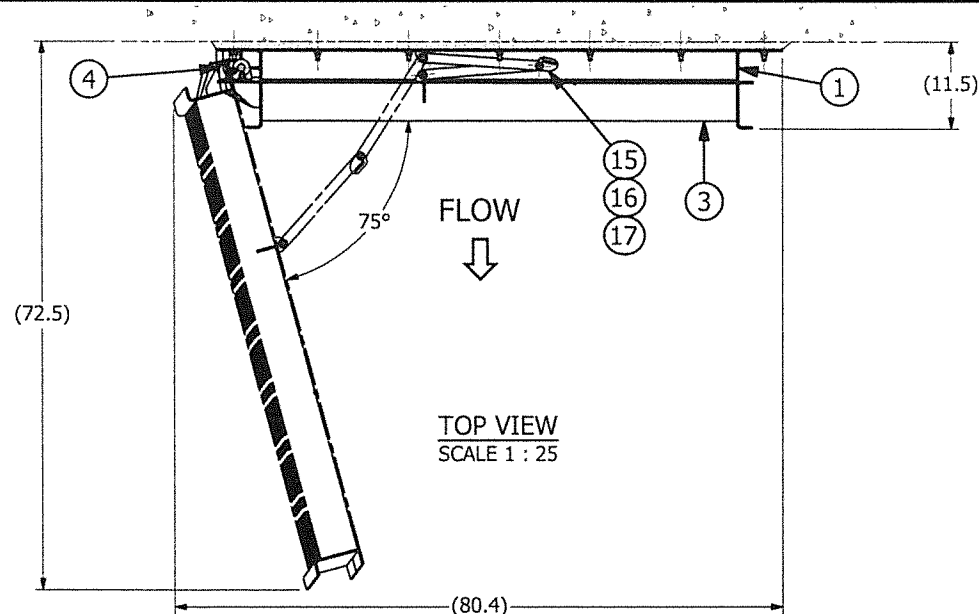
(All Tender and Contract Prices shall NOT include GST. GST will apply upon payment)
(Should there be any discrepancy in the information provided, the City's original file copy shall prevail)

ITEM NO.	MMCD Ref. / (Supp. Specs)	DESCRIPTION	UNIT	QTY	UNIT PRICE	EXTENDED AMOUNT
1.00	01 53 01	TEMPORARY FACILITIES				
1.01	(1.9.2)	Temporary Isolation and Bypass Works (Como Creek)	l.s.	1		
1.02	(1.9.2)	Temporary Isolation and Bypass Works (Nelson Creek)	l.s.	1		
2.00	01 55 00	TRAFFIC CONTROL, VEHICLE ACCESS AND PARKING				
2.01	1.5.1	Traffic Control and Management				Incidental to Contract
3.00	01 57 01	ENVIRONMENTAL PROTECTION				
3.01	1.6.1	Conformance to PEMP and WSA Approval Requirements Including Use of BMPs, Creation of Approved ESC Plan, and Supply, Install, & Removal of ESC Materials	l.s.	1		
4.00	01 58 01	PROJECT IDENTIFICATION				
4.01	(1.3.1)	Construction Zone Information Signs	ea.	2		
5.00	03 30 20	CONCRETE WALKS, CURBS AND GUTTERS				
5.01	(1.4.3)	Concrete Curb & Gutter - Rollover Curb – MMCD C4	l.m.	12		
6.00	03 30 53	CAST-IN-PLACE CONCRETE				
6.01	(1.5.6)	Cast-In-Place Concrete (Como Creek)	l.s.	1		
6.02	(1.5.6)	Cast-In-Place Concrete (Nelson Creek)	l.s.	1		
7.00	31 11 01	CLEARING AND GRUBBING				
7.01	(1.4.1)	Clearing and Grubbing (Como Creek)	l.s.	1		
7.02	(1.4.1)	Clearing and Grubbing (Nelson Creek)	l.s.	1		
8.00	31 24 13	ROADWAY EXCAVATION, EMBANKMENT AND COMPACTION				
8.01	(1.8.4)	Remove and Dispose of Handrails Off-Site (Como Creek)	l.s.	1		
8.02	(1.8.4)	Remove and Dispose of Handrails Off-Site (Nelson Creek)	l.s.	1		
8.03	(1.8.4)	Remove and Dispose of Existing 1050 Manhole Off-Site	ea.	1		
8.04	(1.8.5)	Common Excavation - Offsite Disposal	cu.m.	15		
8.05	(1.8.7)	Import Embankment Fill (75mm Minus) (Provisional)	tonne	15		
9.00	31 37 10	RIP-RAP				
9.01	1.4.1	Supply and Install 300mm Round Cobbles (Creek Bed)	sq.m.	10		
9.02	1.4.1	Supply and Install 450mm Angular Rip-Rap (Creek Banks)	sq.m.	25		
10.00	32 11 23	GRANULAR BASE				
10.01	1.4.2	19mm Clear Crushed Gravel (75mm Thick)	sq.m.	185		
11.00	32 12 16	HOT MIX ASPHALT CONCRETE PAVING				
11.01	(1.5.3)	Slot-Pave 75mm MMCD LC#1 (includes 100mm Base and 200mm Subbase)	tonne	2.2		
11.02	(1.5.3)	Slot-Pave 50mm MMCD UC#1 (Includes 200mm Key)	tonne	1.5		
12.00	32 31 13	CHAINLINK FENCES AND GATES				
12.01	1.5.4	Supply and Install Handrail as per MMCD Drawing C14	l.m.	42		
13.00	32 91 21	TOPSOIL AND FINISH GRADING				
13.01	(1.4.1)	Topsoil as per Riparian Planting Specifications (150mm Thick)	sq.m.	200		
14.00	32 92 19	HYDRAULIC SEEDING				
14.01	(1.8.1)	Flex-Terra FGM - Fall Rye <i>Secale Cereale</i>	sq.m.	200		
15.00	32 93 01	PLANTING OF TREES, SHRUBS AND GROUND COVERS				
15.01	(1.9.3)	Hardhack <i>Spiraea Douglasii</i> , #1	ea.	100		
15.02	(1.9.3)	Red-osier Dogwood <i>Cornus Stolonifera</i> , #1	ea.	40		
15.03	(1.9.3)	Pacific Ninebark <i>Physocarpus Capitatus</i> , #2	ea.	20		
15.04	(1.9.3)	Nootka Rose <i>Rosa Nutkana</i> , #2	ea.	40		
15.05	(1.9.3)	Snowberry <i>Symphoricarpos Albus</i> , #2	ea.	40		
16.00	33 42 13	PIPE CULVERTS				
16.01	(1.5.7)	Install City Supplied Hydro Gates (Como Creek)	l.s.	1		
16.02	(1.5.7)	Install City Supplied Hydro Gates (Nelson Creek)	l.s.	1		
17.00	33 44 01	MANHOLES AND CATCHBASINS				
17.01	(1.5.1.1)	1500mm Concrete Manhole c/w Boltdown Cover (Nelson Creek)	ea.	1		
17.02	(1.5.1.2)	1500mm Manhole Risers	v.m.	0.4		
17.03	(1.5.4)	Removal of Existing 1050 Manhole	ea.	1		

Total Tendered Price (exclude GST): \$ _____

(Transfer the amount to Form of Tender Summary Page 1)

Name of Contractor: _____



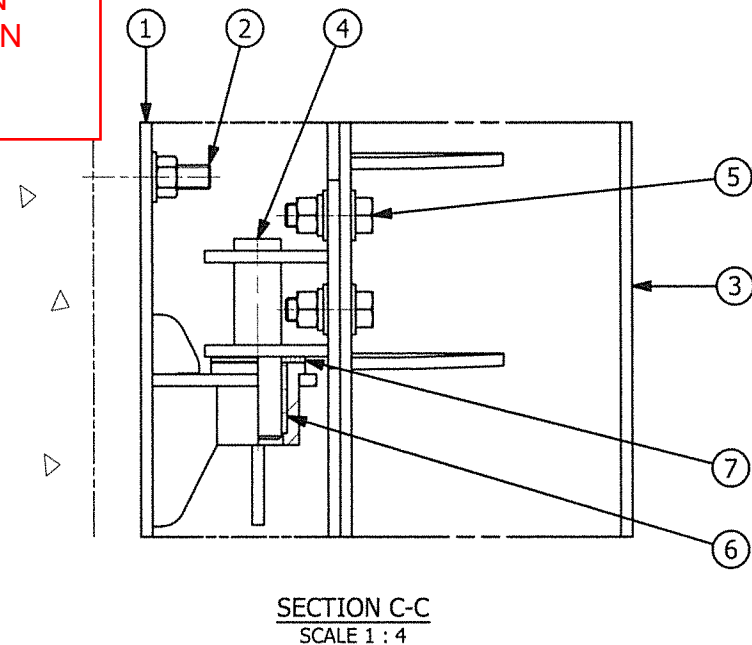
NOTE FOR CONTRACTORS:

HEADWALL IS DESIGNED FOR GATES TO BE HINGED ON OUTSIDE EDGE AND OPEN FROM THE CENTER LIKE FRENCH DOORS.

PARTS LIST						
ITEM	QTY	TITLE	PART NUMBER	SIZE/DWG#	DESCRIPTION	MATERIAL
1	1	Frame	200249-01-1	200249-0201	Weldment	Stainless Steel
2	32	Anchor	Anchor rod 0.5x7.0	½ UNC x 7.0	Threaded rod w/ 2 Nuts & FW	Stainless Steel
3	1	Flap	200249-01-3	200249-0102	Weldment	Stainless Steel
4	3	Hinge pin	200249-01-4	200249-0103	Weldment	Stainless Steel
5	6	Hinge bolt		½ UNC x 1.5	Hex Bolt w/ Nut, 2 FW, LW	Stainless Steel
6	3	Hinge bearing	McMASTER #6365K411	Ø1 x Ø1 ¼ x 1.5	Filament Wound Sleeve Bearing	GFRP
7	3	Thrust bearing	McMASTER #7532K15	Ø1 x Ø2 x ⅛	Thrust Bearing	RULON LR
10	1	Seal	200249-01-10	200249-0104	P/J-Seal	Rubber
11	2	Horizontal seal retainer	200249-01-11	¼	Plate	Stainless Steel
12	2	Vertical seal retainer	200249-01-12	¼	Plate	Stainless Steel
13	76	Seal retainer nut		¾ UNC	Nut w/ FW	Stainless Steel
15	1	Frame limiter arm	200249-01-15	200249-0103	Weldment	Stainless Steel
16	1	Flap limiter arm	200249-01-16	¼	Plate	Stainless Steel
17	3	Limiter arm bolt		½ UNC x 1.75	Hex Bolt w/ Nut, Jam nut, 3 FW	Stainless Steel

MATERIAL SPECIFICATIONS

S-STL, FORMED & PLATE - TYPE 316L ASTM-A240
S-STL, HOT ROLLED SHAPES - TYPE 316L ASTM-A276
S-STL ANCHOR RODS - TYPE 316 ASTM-A276
HARDWARE & FASTENERS - TYPE 316 ASTM-F593/ 594
NEOPRENE RUBBER - ASTM-D2000



CONTRACTOR/ENGINEER NOTES	
#	DESCRIPTION
1	PLEASE CONFIRM OR PROVIDE INVERT ELEVATION, OTHER ELEVATIONS AND OPERATING HEADS.

INSTALLATION NOTES FOR INSTALLER

FRAME OR FRAME COMPONENTS, PEDESTAL, WALL BRACKET, STEM GUIDES AND OPERATOR MUST BE INSTALLED FLAT, STRAIGHT AND PLUMB. SHIM AND BRACE AS NECESSARY.

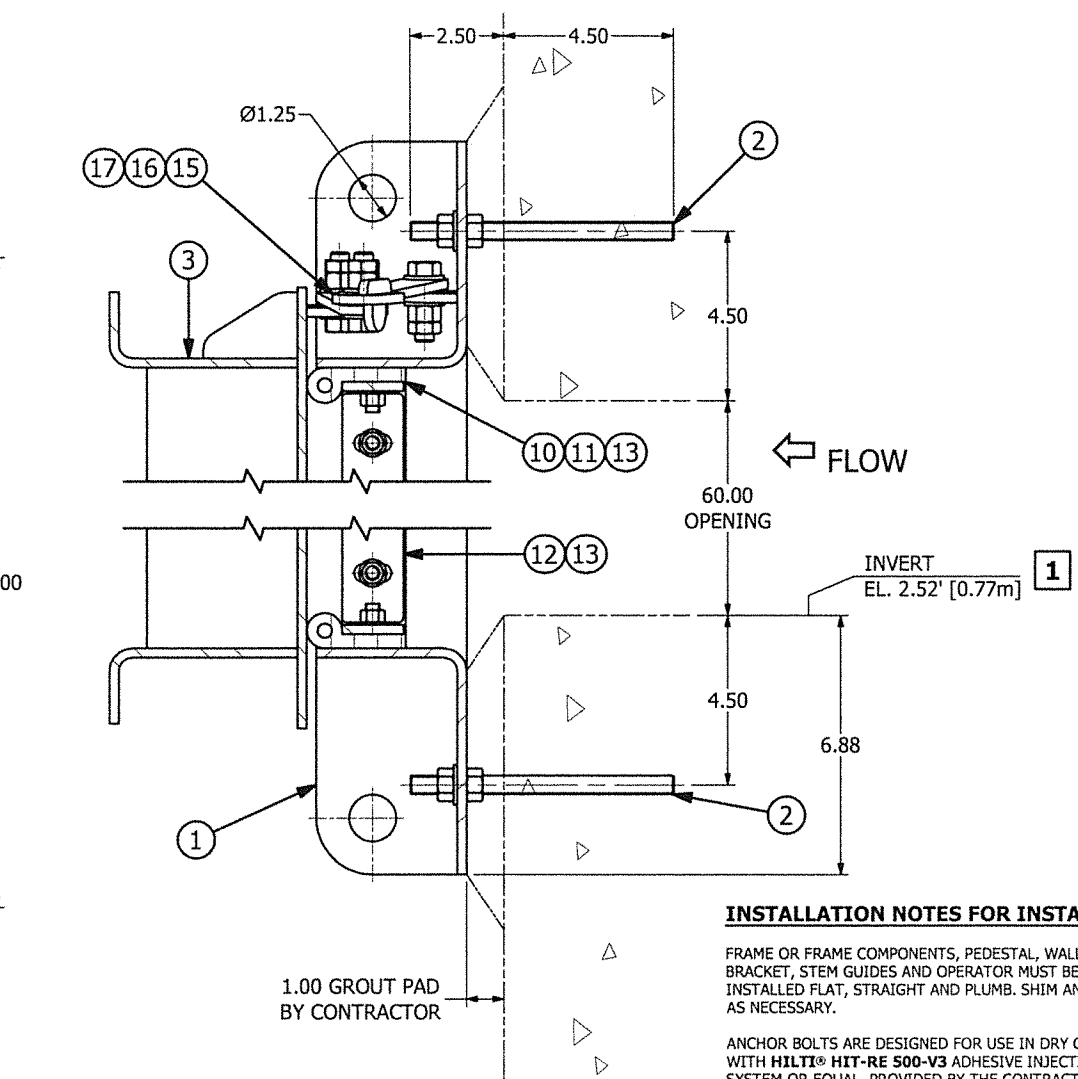
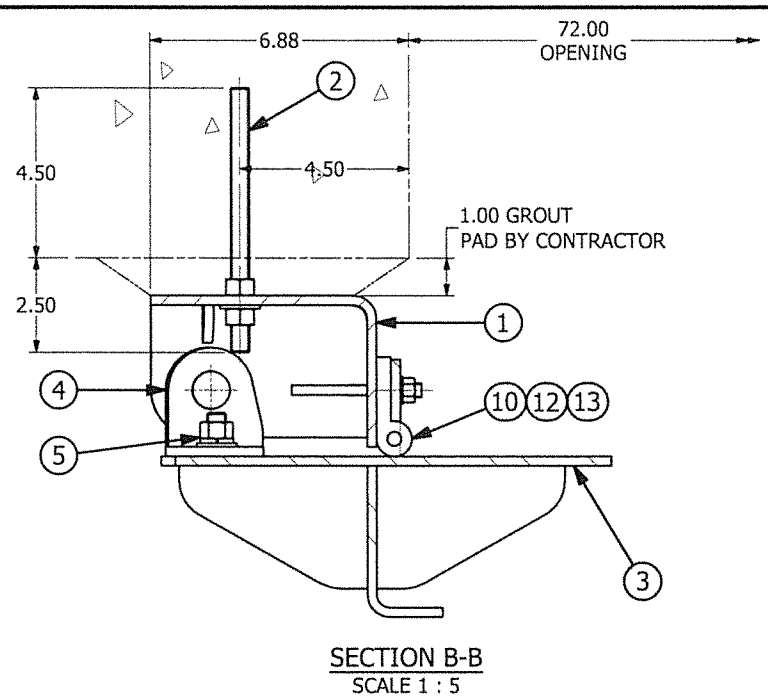
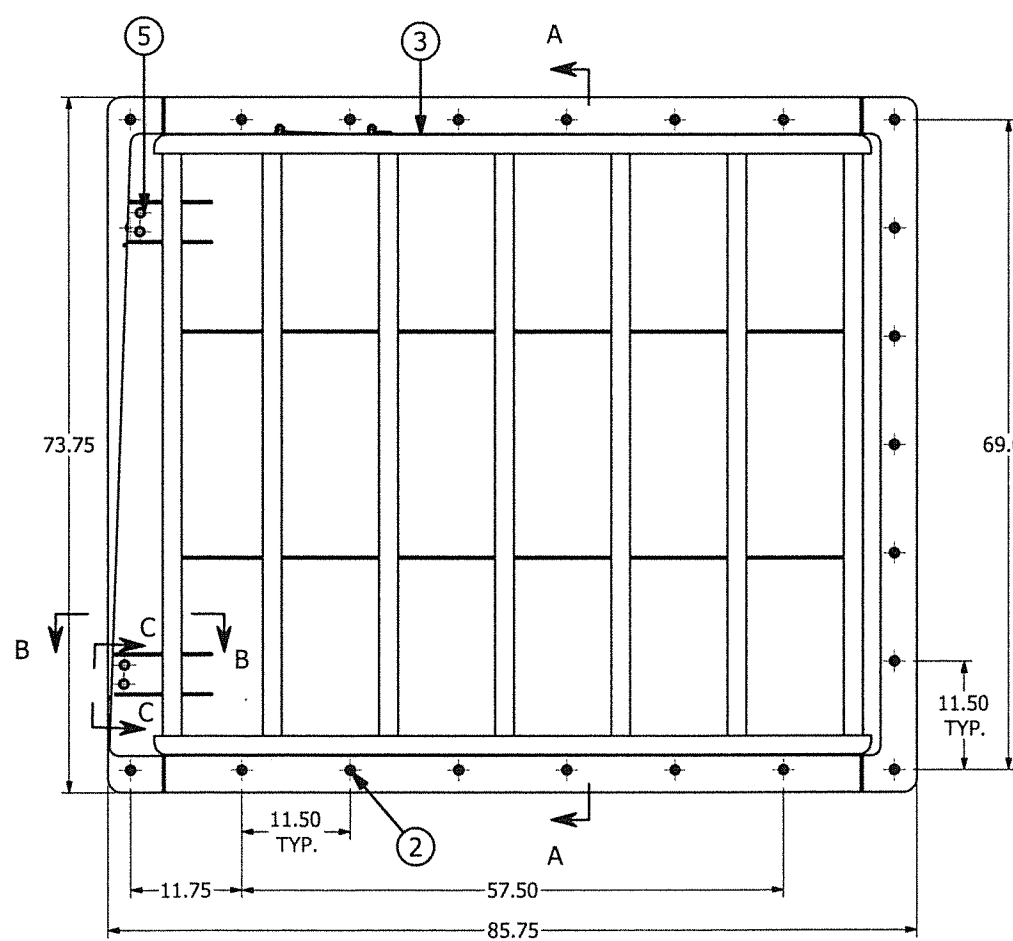
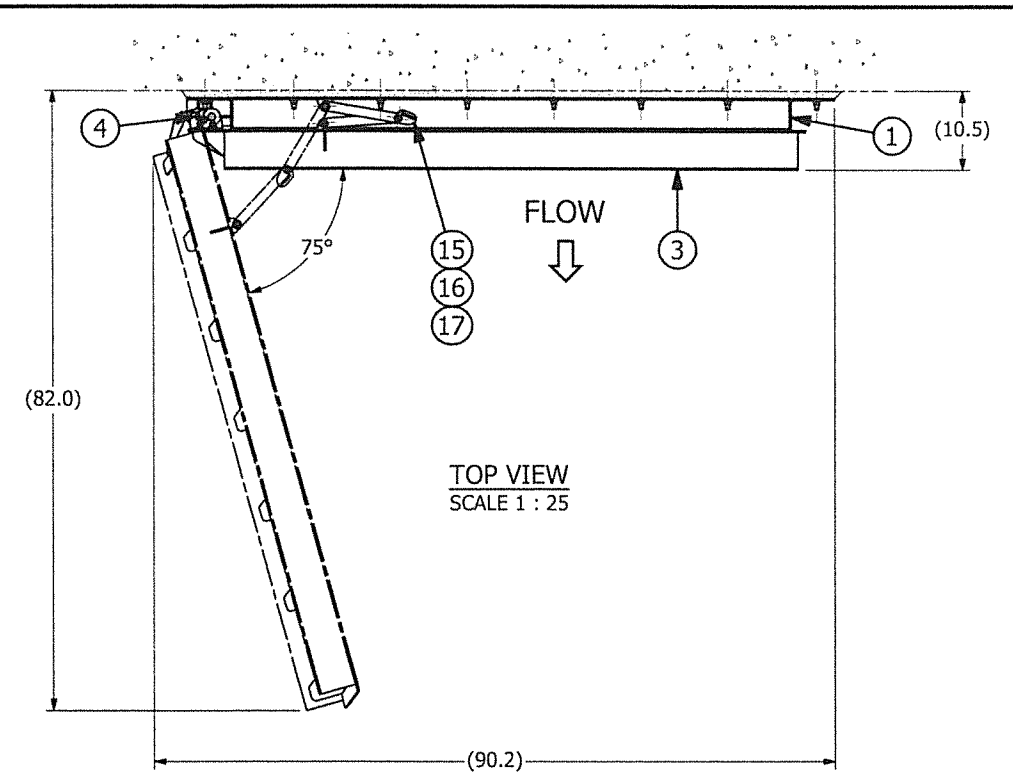
ANCHOR BOLTS ARE DESIGNED FOR USE IN DRY CONCRETE WITH **HILTI® HIT-RE 500-V3** ADHESIVE INJECTION SYSTEM OR EQUAL, PROVIDED BY THE CONTRACTOR.

SEE OPERATION & MAINTENANCE MANUAL FOR ADDITIONAL INSTALLATION INFORMATION.

GENERAL TOLERANCES:

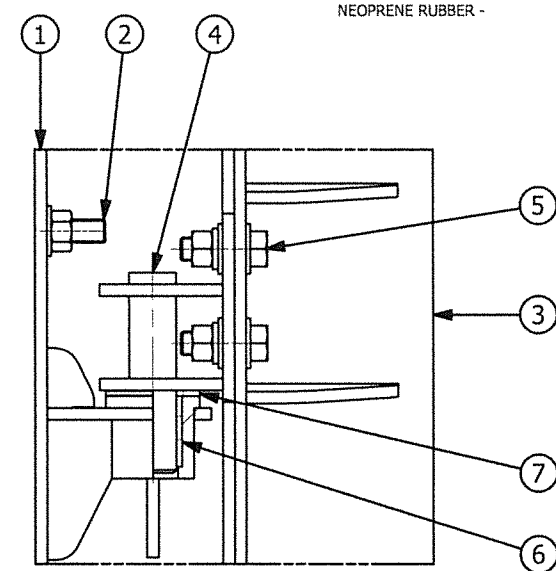
PARALLEL ± 1/16"
COPLANAR ± 1/16"
FLAT & STRAIGHT ± 1/16"
SQUARE ± 1/16"

Max Seating Head = 10.9'[3.32m]		Max Unseating Head = N/A	
Max Operating Head = 10.9'[3.32m]		Measured From GATE INVERT	
61" x 112.25" GH-851 FACE MNT. SIDE HINGED FLAP GATE		Golden Harvest, Inc. Golden Gates™ 1-800-338-6238 P.O. BOX 287 Burlington, WA - 98233	
Project Description: COMO & NELSON CREEK FLOOD GATES REHAB PROJECT		COMO CREEK HEADWALL CC-FG 101/102 2 - REQ'D	
Contractor: SUMMIT VALVE & CONTROLS		Date Drawn: 4/26/2021	
Engineer: APLIN MARTIN (LIAM O'CONNELL)		Revision:	
Drawn by: VLM		Revision:	
		Revision:	
		G.H. DWG#: 01 Sheet: 1 of 1	
		Contract Sht #: C01/02	
		Scale: IND.	Job No.: 20-0249



PARTS LIST						
ITEM	QTY	TITLE	PART NUMBER	SIZE/DWG#	DESCRIPTION	MATERIAL
1	1	Frame	200249-02-1	200249-0201	Weldment	Stainless Steel
2	26	Anchor	Anchor rod 0.5x7.0	½ UNC x 7.0	Threaded rod w/ 2 Nuts & FW	Stainless Steel
3	1	Flap	200249-02-2	200249-0202	Weldment	Stainless Steel
4	2	Hinge pin	200249-02-3	200249-0203	Weldment	Stainless Steel
5	4	Hinge bolt		½ UNC x 1.5	Hex Bolt w/ Nut, 2 FW, LW	Stainless Steel
6	2	Hinge bearing	McMASTER #6365K411	Ø1 x Ø1 ¼ x 1.5	Filament Wound Sleeve Bearing	GFRP
7	2	Thrust bearing	McMASTER #7532K15	Ø1 x Ø2 x ⅛	Thrust Bearing	RULON LR
10	1	Seal	200249-02-10	200249-0204	P/J-Seal	Rubber
11	2	Horizontal seal retainer	200249-02-11	⅜	Plate	Stainless Steel
12	2	Vertical seal retainer	200249-02-12	⅜	Plate	Stainless Steel
13	58	Seal retainer nut		⅝ UNC	Nut w/ FW	Stainless Steel
15	1	Frame limiter arm	200249-02-15	200249-0203	Weldment	Stainless Steel
16	1	Flap limiter arm	200249-02-16	⅜	Plate	Stainless Steel
17	3	Limiter arm bolt		½ UNC x 1.75	Hex Bolt w/ Nut, Jam nut, 3 FW	Stainless Steel

MATERIAL SPECIFICATIONS
S-STL, FORMED & PLATE - TYPE 316L ASTM-A240
S-STL, HOT ROLLED SHAPES - TYPE 316L ASTM-A276
S-STL ANCHOR RODS - TYPE 316L ASTM-A276
HARDWARE & FASTENERS - TYPE 316L ASTM-F593/ 594
NEOPRENE RUBBER - ASTM-D2000



CONTRACTOR/ENGINEER NOTES	
#	DESCRIPTION
1	PLEASE CONFIRM OR PROVIDE INVERT ELEVATION, OTHER ELEVATIONS AND OPERATING HEADS.

NOTE FOR CONTRACTORS:
HEADWALL IS DESIGNED FOR GATES TO BE HINGED ON OUTSIDE EDGE AND OPEN FROM THE CENTER LIKE FRENCH DOORS.

INSTALLATION NOTES FOR INSTALLER
FRAME OR FRAME COMPONENTS, PEDESTAL, WALL BRACKET, STEM GUIDES AND OPERATOR MUST BE INSTALLED FLAT, STRAIGHT AND PLUMB. SHIM AND BRACE AS NECESSARY.
ANCHOR BOLTS ARE DESIGNED FOR USE IN DRY CONCRETE WITH HILTI® HIT-RE 500-V3 ADHESIVE INJECTION SYSTEM OR EQUAL, PROVIDED BY THE CONTRACTOR.
SEE OPERATION & MAINTENANCE MANUAL FOR ADDITIONAL INSTALLATION INFORMATION.

GENERAL TOLERANCES:
PARALLEL ± 1/8"
COPLANAR ± 1/8"
FLAT & STRAIGHT ± 1/16"
SQUARE ± 1/8"

Max Seating Head = 8.7'[2.65m]		Max Unseating Head = N/A	
Max Operating Head = 8.7'[2.65m]		Measured From GATE INVERT	
72" x 60" GH-851 FACE MNT. SIDE HINGED FLAP GATE		Golden Harvest, Inc. Golden Gates™ 1-800-338-6238 P.O. BOX 287 Burlington, WA - 98233	
Project Description: COMO & NELSON CREEK FLOOD GATES REHAB PROJECT		NELSON CREEK HEADWALL NC-FG 201/202	
For: COQUITLAM, BC		2 - REQ'D	
Contractor: SUMMIT VALVE & CONTROLS		Date Drawn: 4/26/2021	
Engineer: APLIN MARTIN (LIAM O'CONNELL)		Revision:	
Drawn by: VLM		Revision:	
		Revision:	
		G.H. DWG#: 02 Sheet: 1 of 1	
		Contract Sht #:	
		Scale: IND. Job No.: 20-0249	
		C01/02	