



## **Addendum No. 1**

City of Coquitlam

**RFP No. 22-010**

### **Mundy Park Trail Realignment**

Issue Date: March 14, 2022

Total Page Count: 6 including attachments

Proponents shall note the following amendments to the RFP documents:

#### **NOTES**

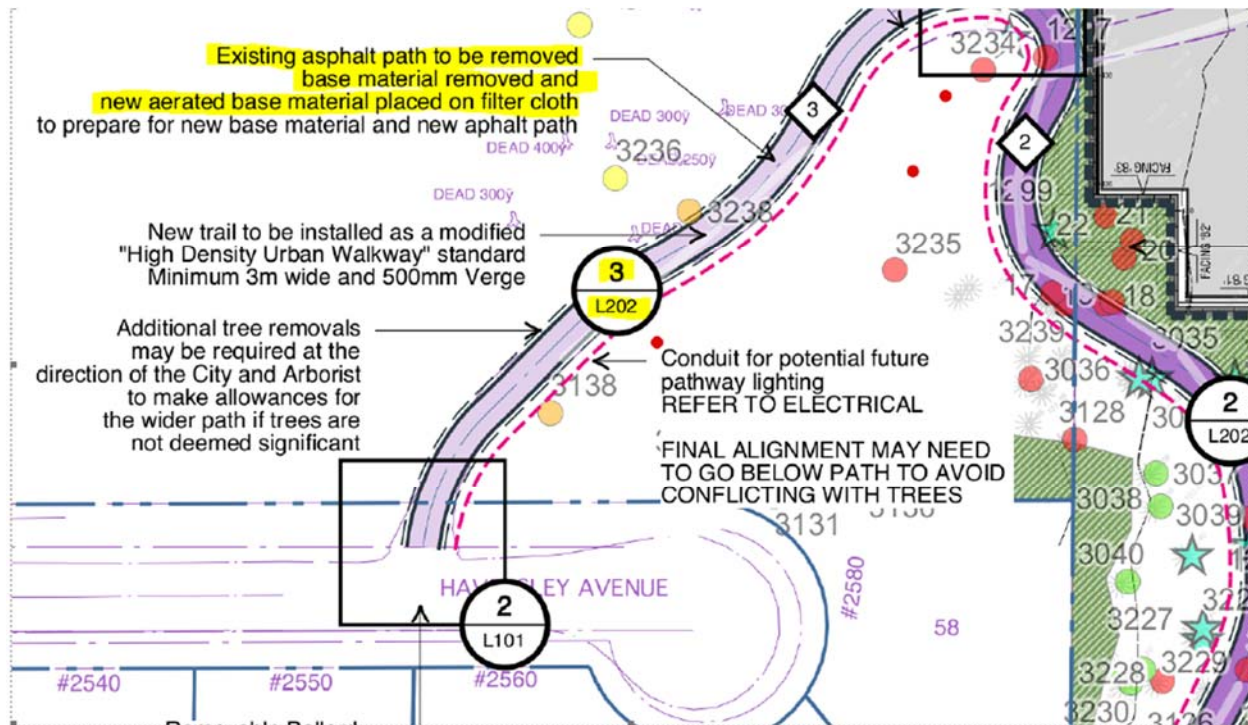
- R1) The Work will commence between the beginning of May and the end of July, contingent on the completion of the Archeological Impact Assessment Report. The successful Proponent will be required to mobilize within two weeks of receiving a notice to proceed within the time range outlined above.**

#### **REVISIONS**

- R2) In Section 1.1 Project Description, where it states:**  
Completion Date: The Work shall be substantially completed by August 1, 2022.  
**Is Replaced with:**  
**Completion Date: A date to be mutually agreed upon between the City and the Contractor.**
- R3) In Section 4b of the Proposal Submission Form, where it states:**  
Total Completion Date September 1, 2022 or earlier  
**Is Replaced with:**  
**Total Completion Date: A date to be mutually agreed upon between the City and the Contractor.**

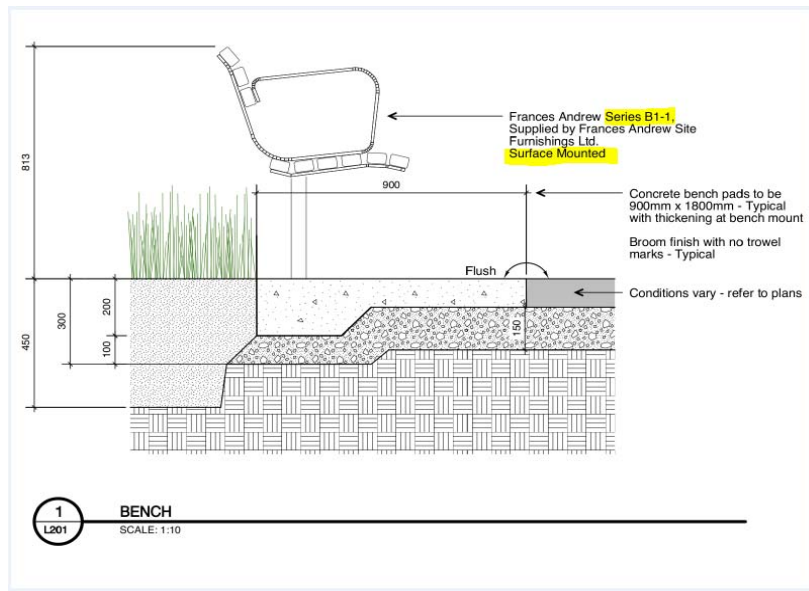
#### **QUESTIONS AND CLARIFICATIONS**

- Q1)** Note 8 on drawing L100 suggests that all trail construction is to have aerated base material and geotextile. The replacement of existing pathway (pay item xi) shown on drawing L100 says that existing asphalt and base material are to be removed and that a new aerated base and filter cloth are to be installed to prepare for new base material and new asphalt. Detail 3 on L202 for this pathway doesn't show an aerated base and filter cloth. It also suggests milling the existing path and leaving the existing base gravels in place. Are you able to clarify the build up required for the pathway shown in detail 3 of L202?



- A1) Existing asphalt path to be milled and resurfaced as part of Schedule of Quantities and Prices. An alternate price is requested using Detail 3A for this section.**
- Q2) Landscape note 3 mentions that the Contractor will have to deal with the small trees in conflict with the trail and that the rest will be removed by others. Are you able to provide clarification on what you are defining a small tree to be?
- A2) Understory trees and large shrubs in the 10' - 20' range may conflict with the path and require removal.**
- Q3) Are you able to confirm how many of the 106 trees will be left for the Contractor to remove?
- A3) The 106 trees have been removed and are not included in the scope of work.**
- Q4) Are the Vine Maple Patches considered to be an invasive species?
- A4) No.**
- Q5) Where is the alternate pathway per detail 3A/L202 meant to be installed?
- A5) Detail 3 is to be used in the Schedule of Quantities and Prices and 3A is an alternate detail for the same stretch of trail between Haversley and the next trail intersection. 3A will be the detail for pricing requested in Optional Items - Price.**
- Q6) Are you able to provide a spec for the removable bollard?
- A6) Removable bollard specifications included as Attachment 1 as part of this Addendum No. 1. Shop drawings to be submitted to City for review and approval.**

- Q7) Are you able to provide a spec for the bicycle baffles?
- A7) **Bike Baffle specifications included as Attachment 1 as part of this Addendum No. 1. Shop drawings to be submitted to City for review and approval.**
- Q8) The Frances Andrew bench shown on the drawings lists model B1-1 as surface mounted. B1-1 is actually an in ground model. B1-2 is surface mounted. Are you able to confirm the model required?



- A8) **B1-2 bench specifications included as part of addendum. Shop drawings to be submitted to City for review and approval.**
- Q9) Are you able to provide a spec for the woven geotextile required on the pathways?
- A9) **Specifications for woven geotextile for pathways is Nilex 4553**

---

### ***End of Addendum No. 1***

Proponents take into account the content of this Addendum in the preparation and submission of the Proposal which will form part of the Contract and should be acknowledged on the Proposal Submission Form.

Upon submitting a Proposal, Proponents are deemed to have received all addenda that are issued and posted on the City's website and considered the information for inclusion in the Proposal submission.

*Issued by:*

M. Pain  
Purchasing Manager  
[bid@coquitlam.ca](mailto:bid@coquitlam.ca)

# Frances Andrew

## Site Furnishings Ltd



### Basic Series 1

#### General Specifications:

**Wood:** Ipe hardwood. Wood members 1 1/2" (3.7cm) x 2 1/2" (6 cm) with 1/4" (0.63cm) radius on edges and ends. Ipe is smooth sanded and sealed.

**Metal:** Mild steel, wheel-abraded to bare metal, then precisely fabricated to final shape. The metal is coated with Polyester, electrostatically applied, and baked at a high temperature to produce a "mar-resistant" finish.

**Hardware:** An exclusive nut design and bolt-through construction create a single, solid unit. A special wrench for vandal-resistant hardware is provided with each bench. All hardware is professionally finished with our baked-on Polyester Powder Coating.

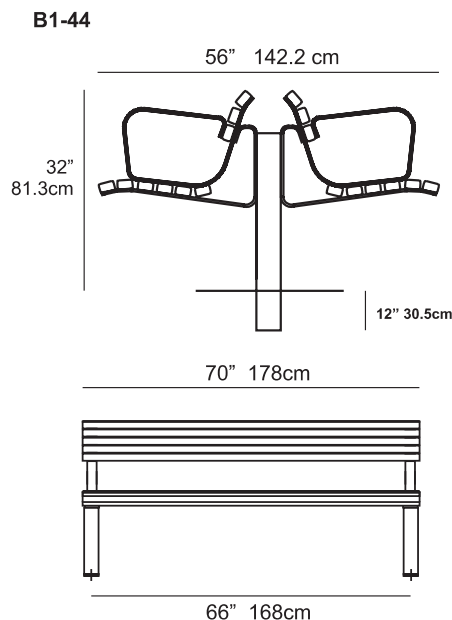
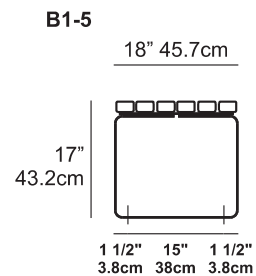
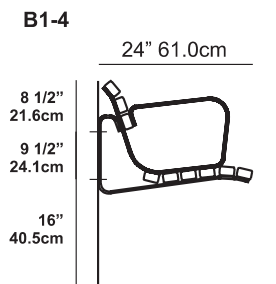
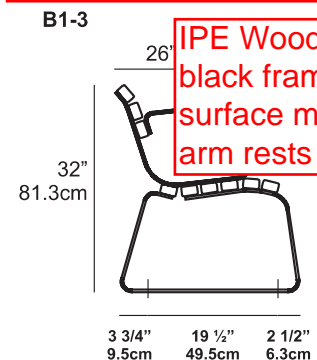
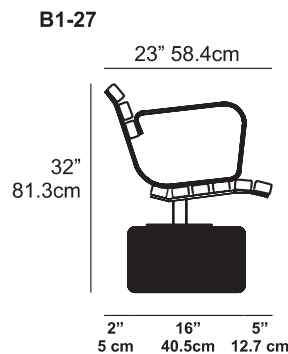
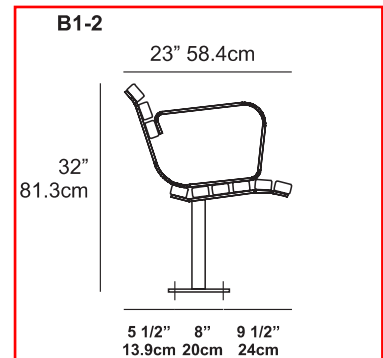
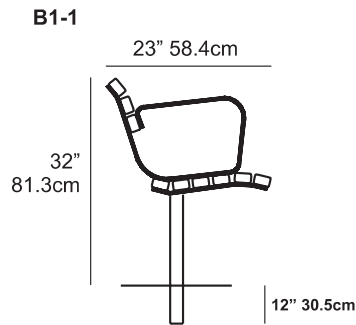
#### Options:

**Wood:** Non-standard wood (such as Oak, or Maple) may be substituted for Ipe for an additional cost.

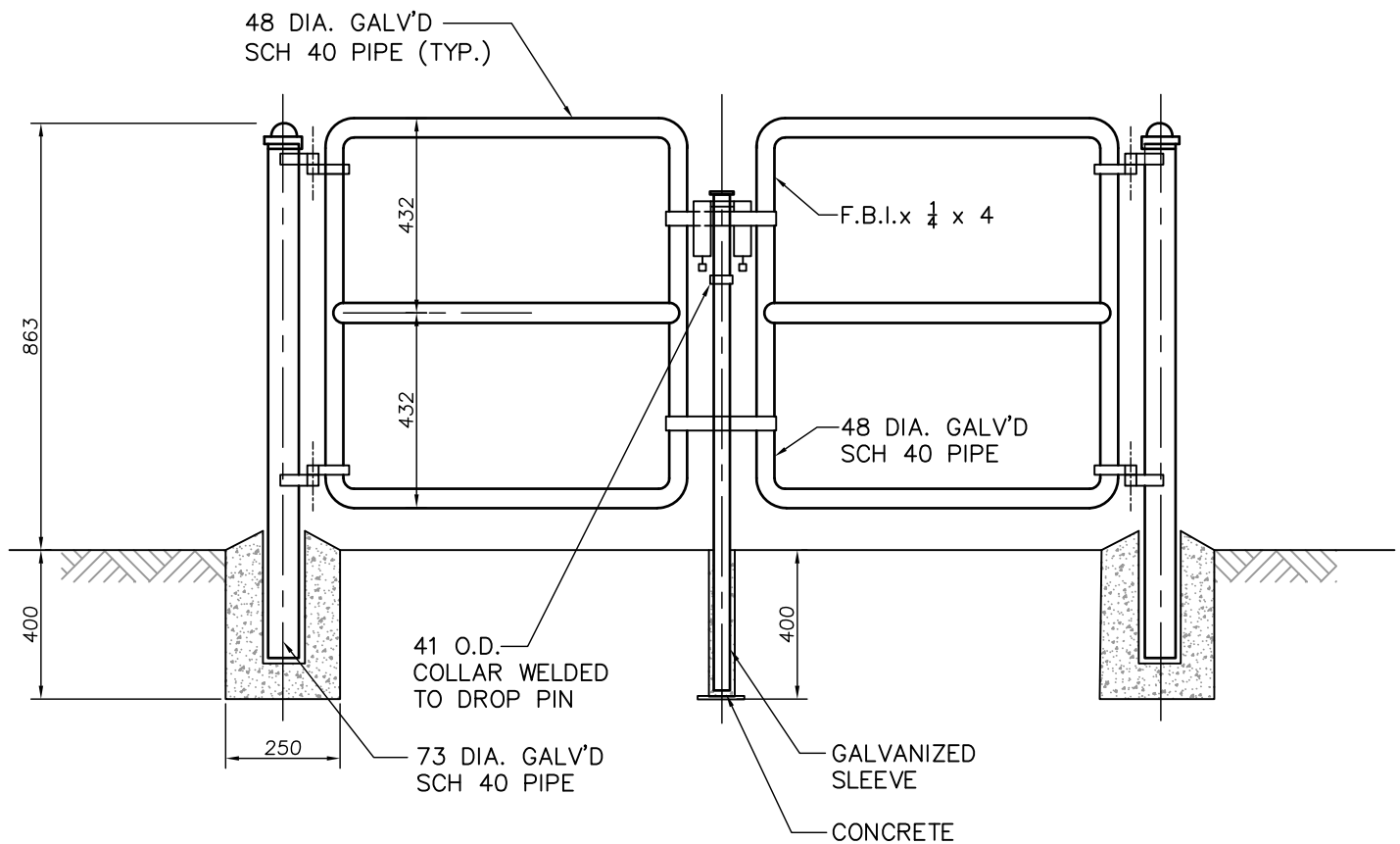
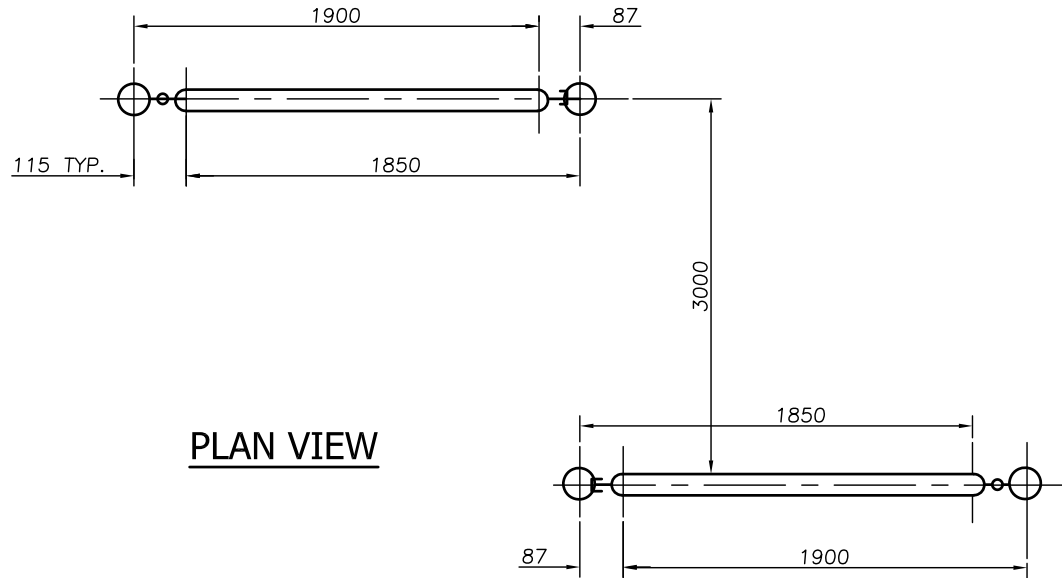
**Metal Colors:** Make your choice from one of eighteen standard paint colors. Or, for an additional charge, choose from one of over 160+ custom paint colors. Standard color chips and Custom color charts are available upon request.

#### Accessories:

To give your project that professional finish, may we suggest the addition of our Series 8 receptacles. For a complete listing of our receptacles, and other furnishings, please refer to the respective areas in our catalogue.



**IPE Wood  
black frame  
surface mount  
arm rests**



### ELEVATION VIEW

NOTES:

1. ALL PIPE AND HARDWARE TO BE POWDER COATED BLACK RAL 9005.

PLOTTED: 14-Mar-22

## WALKWAYS, BAFFLE GATE

DATE:	MAR/2022
-------	----------

DRAWN: REY

SCALE: N.T.S.

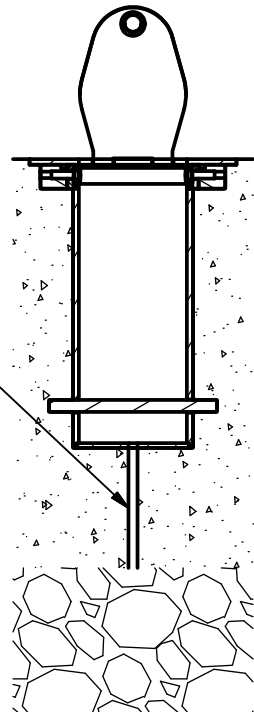
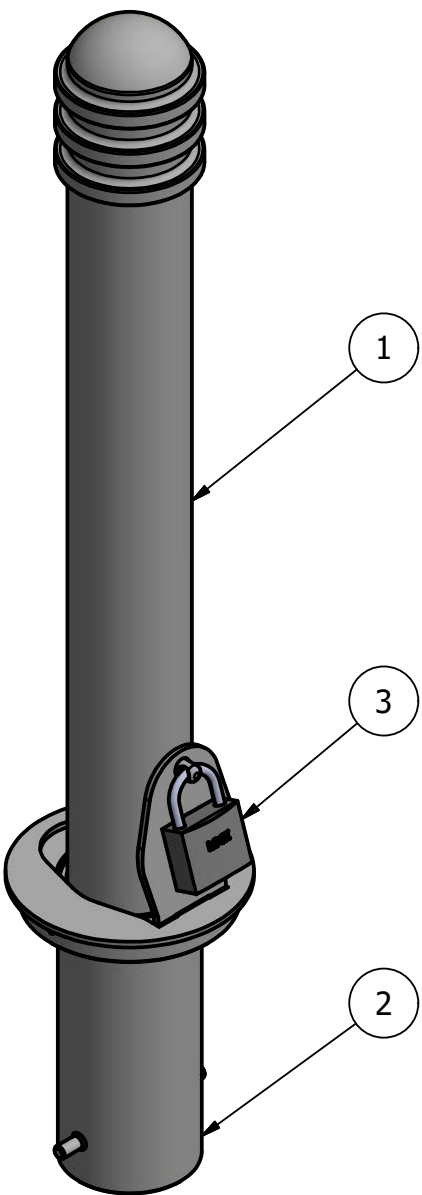
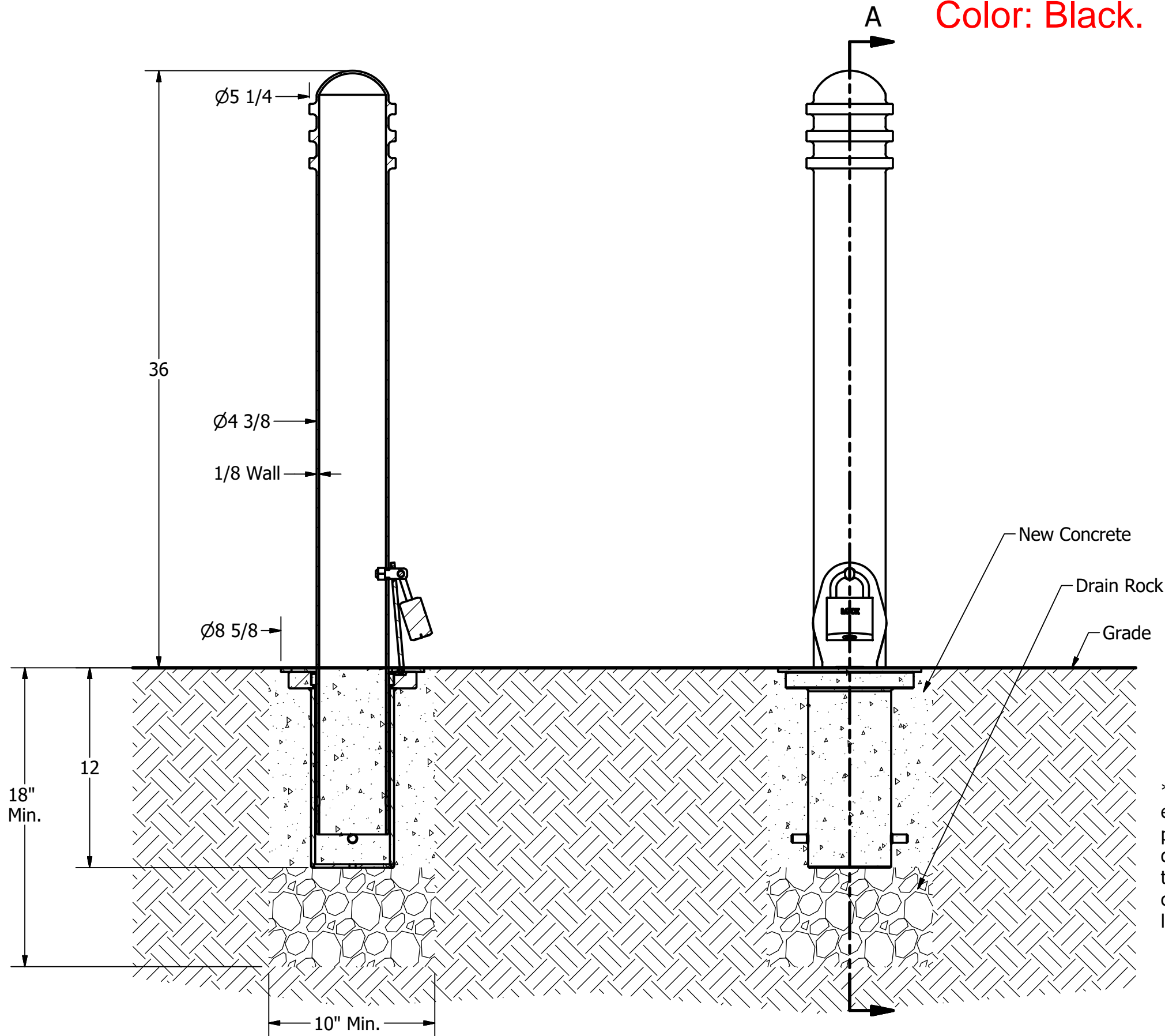
DRAWING NUMBER:

COQ-XXX



Bollard Post, Model R-7901

With reflector tape  
between the grooves.  
Color: Black.



General Description:

Clearly communicate intended routes and access regulations on your streetscape with the model R-7901 steel bollard from Reliance Foundry. Composed of standard steel and finished with a durable powder-coating, it is an aesthetically versatile device that will complement the architecture of almost any site. The R-7901 can be installed with a standard fixed mounting or with a removable or fold down mountings that allow temporary access to maintenance, delivery or emergency vehicles. Seven powder coating color options are available and the model R-7901 is kept in stock, available for immediate shipment.

For more information on bollard post installation, please visit:  
[www.reliance-foundry.com/bollard/installation-bollards](http://www.reliance-foundry.com/bollard/installation-bollards)

Specifications:

Height: 36" ( Above Grade )

Base Diameter: 4 3/8"

Weight: 33 lbs ( Bollard Post Full Length )

Material: Steel ( ASTM A36 )

Finish Options:

- ✓ Polyester Powdercoated
- See Reliance Foundry's standard color options at [www.reliance-foundry.com/bollard/colors-bollards](http://www.reliance-foundry.com/bollard/colors-bollards)

Mount Options:

- ✓ Removable Receiver with Lid (see sheet 2 of 7)
- Removable Receiver with Chain (see sheet 3 of 7)
- Fixed Embedded Mount (see sheet 4 of 7)
- Flanged Surface Mount (see sheet 5 of 7)
- Fold Down Mount (see sheet 6 of 7)
- Optional Chain Accessory (see sheet 7 of 7)

SECTION A-A

Removable Receiver with Lid

(For important detail regarding installation with OPTIONAL bollard chain accessories, refer to sheet 7 of 7)

Notes:

- Embedment details are for reference illustration only. Minimum foundation sizes depend on local soil conditions, weather conditions, and engineering requirements.
- Bollard post is provided as shown, with material detailed in legend below. Concrete, foundation and/or installation ordered separately or provided by others.
- This drawing is not drawn to scale. Dimensions provided herein is for reference only. Please consult Reliance Foundry sales professionals if any dimension is critical to your particular installation.
- Reliance Foundry reserves the right to amend design and specifications without prior notice for product improvement.

PARTS LIST					
ITEM	QTY	PART NUMBER	DESCRIPTION	MATERIAL	WEIGHT
1	1	R7901 Removable Bollard	R7901 Removable Bollard Assembly	Steel Powder Coated	33 lbs
2	1	R7901R Receiver	R7901R Receiver Assembly w/ Lid	Galvanized Steel w/ 316 Stainless Steel Cover	24 lbs
3	1	Padlock (Optional)	Optional Padlock (Brass or Stainless Steel)	Choice of Brass or Stainless Steel	5/8 lbs

COPYRIGHT RESERVED THIS PLAN DRAWING AND DESIGN ARE, AND AT ALL TIMES REMAIN, THE EXCLUSIVE PROPERTY OF RELIANCE FOUNDRY CO. LTD.

RELIANCE FOUNDRY  
SINCE 1925

Unit 207, 6450 - 148 Street, Surrey, BC V3S 7G7, Canada  
1-888-735-5680 info@reliance-foundry.com  
[www.reliance-foundry.com](http://www.reliance-foundry.com)

TITLE

Bollard Post, Model R-7901

SIZE

C

DWG NO

R-7901

REV

C1

NOT TO SCALE

SHEET 2 OF 7