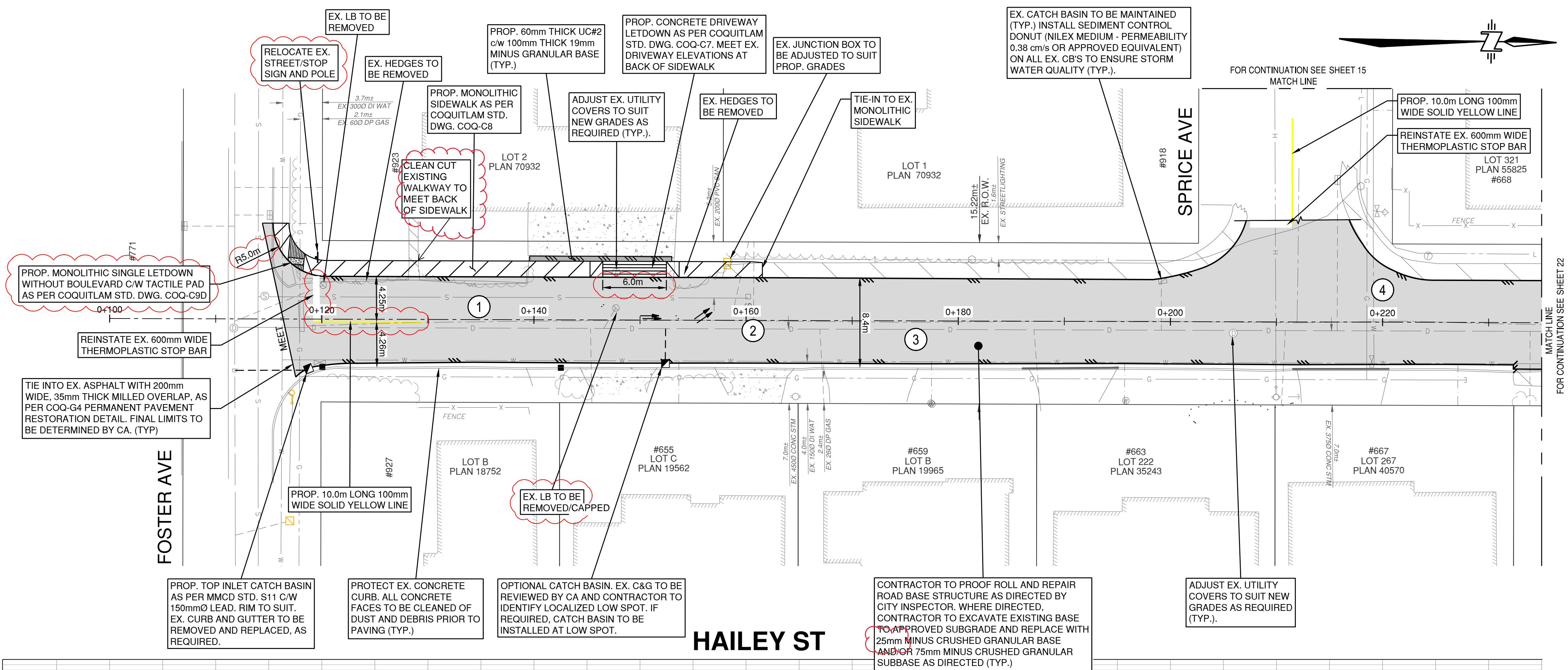




**BENCHMARK:**  
SURVEY CONTROL POINT WAS FROM GPS OBSERVATION



<div style="display: flex; align-items: center; justify-content: center;"> <div style="border: 1px solid black; border-radius: 50%; width: 30px; height: 30px; display: flex; align-items: center; justify-content: center; margin-right: 10px;"> # </div> <div> <b>ASPHALT CORE TABLE</b> </div> </div>			
CORE	THICKNESS (mm)		COMMENTS
	TOTAL	TOP	
1	60		ALLIGATORING (OLD PAVEMENT)
2	45		• 0 - 45mm ASPHALTIC CONCRETE • 45 - 100mm SAND AND GRAVEL (ROAD BASE) • 100 - 150mm BROWN SAND • 150 - 340mm TAN SAND AND GRAVEL • 340 - 680mm REDDISH BROWN SAND WITH SOME GRAVEL AND TRACES OF SILT • 680 - 1000mm TAN SILTY SAND (DENSE)
3	80	60	NEWER PAVEMENT (SERVICE UPGRADE)
4	50		OLD PAVEMENT
PER METRO TESTING REPORT MB39458-1 - NOV 5, 2021			

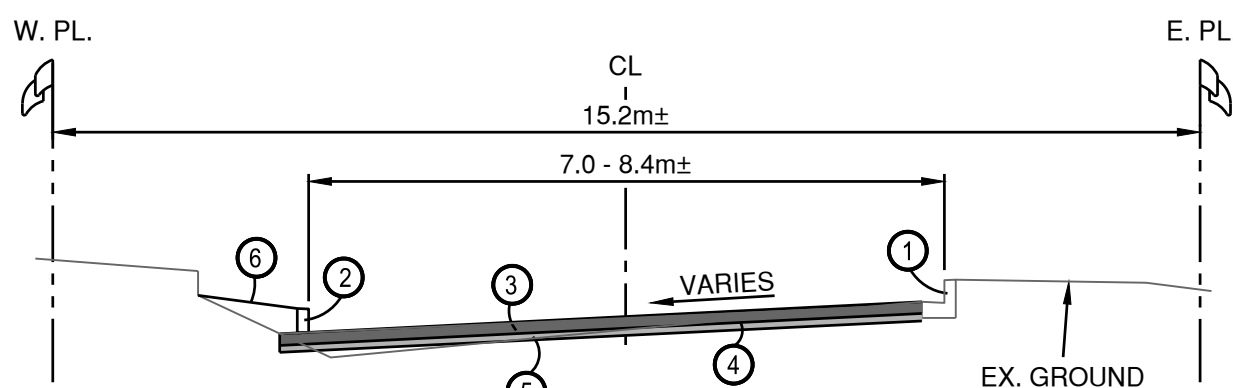
TREATMENT - FULL DEPTH REPAIR

FULL DEPTH MILL AND REMOVE EX. ASPHALT AND REMOVE PORTION OF EX. GRAVELS TO UP TO 125mm BELOW DESIGN GRADES; REGRADE WITH MIN. 50mm THICK 25mm MINUS CRUSHED GRANULAR BASE AND COMPACT TO 95% MODIFIED PROCTOR DENSITY; ADD THE FOLLOWING ROAD STRUCTURE:

- 75mm - MMCD UPPER COURSE #1 ASPHALT IN ONE LIFT

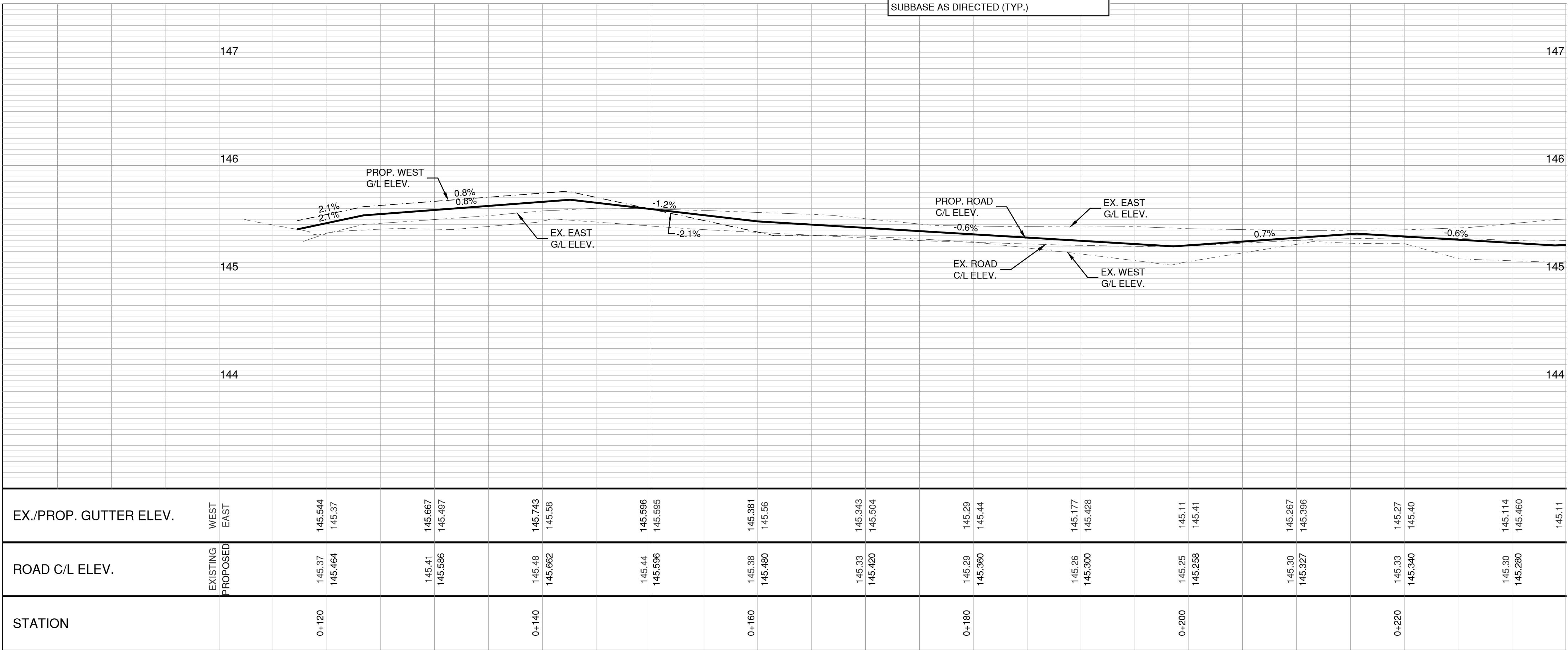
REFER TO SHEET 23 FOR  
CROSS SECTIONS (TYP).

REFER TO SHEET 01 FOR  
GENERAL NOTES (TYP).



**TYPICAL SECTION - HAILEY ST**  
FOSTER AVE TO STA. 0+158  
N.T.S

- ① EX. CONCRETE CURB TO REMAIN.
- ② PROP. 150mm HIGH DRAINAGE CURB (C/W 25mm DRIVEWAY DROPS) AS PER DETAIL ON SHEET 01, WHERE SHOWN ON PLAN.
- ③ 75mm THICK MMCD UPPER COURSE #1 ASPHALT IN ONE LIFT.
- ④ 50mm MIN. - 19mm MINUS CRUSHED GRANULAR BASE COMPACTED TO 95% MODIFIED PROCTOR DENSITY.
- ⑤ FULL DEPTH MILL AND REMOVE EX. ASPHALT AND REMOVE PORTION OF EX. GRAVELS AS REQUIRED TO 125mm BELOW DESIGN GRADES.
- ⑥ 60mm THICK UC#2 BEHIND S.WALK REGRADE TO ELIMINATE ANY LOW POINTS.



0 H 1:250 10m  
0 V 1:25 1m

DISCLAIMER:  
This drawing must not be reproduced without the written permission of R.F. Binnie & Associates Ltd.  
This drawing is not to be used for construction unless it is stamped "ISSUED FOR CONSTRUCTION" and signed by R.F. Binnie & Associates Ltd. It is the contractor's responsibility to ensure that he is in possession of the latest revision of this drawing.

**ISSUED FOR ADDENDUM**

Edge of pavement	---	Hydrant	Sanitary service	Hydro Gyo Wire	
Watermain and valve	W	Water air valve	Sanitary cleanout	Hydro Kiosk	
Drainage sewer, MH	D	Water blowoff	Utility pole(joint pole)	Vegetation Conifer	
Drainage ditch	~	Water service	Utility pole with light	Vegetation Deciduous	
Sanitary sewer, MH	S	Catch basin, top inlet	Streetlight, davis	Vegetation Shrub	
Sanitary sewer, form	S	Catch basin, side inlet	Survey Fluvial Hub	Survey Iron Pin	
Gasmain and valve	G	Catch basin, round	Comb signal pole	Survey Lead Plug	
Hydro duct, MH	H	Drainage service	Traffic signal pole	Survey Monument	
Telephone duct, MH	T	Drainage cleanout	Junction box		

C	2022-03-15	GS	ISSUED FOR ADDENDUM 1
B	2022-02-25	KDD	ISSUED FOR TENDER
A	2022-02-10	GS	100% DESIGN
No.	Date	By	Revisions

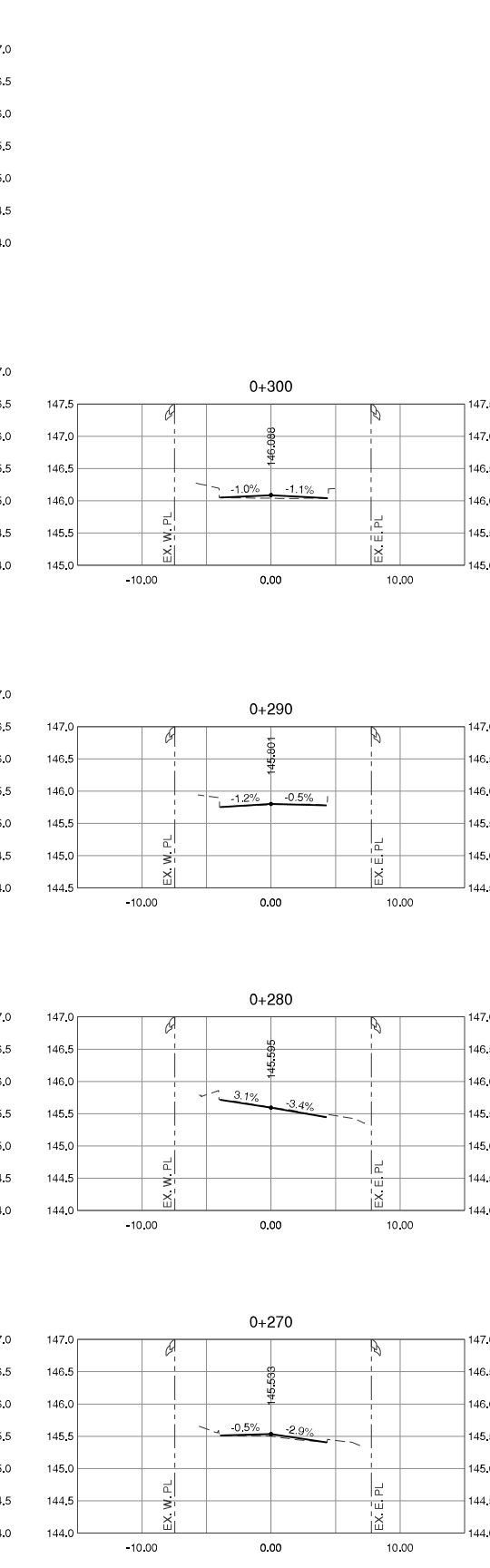
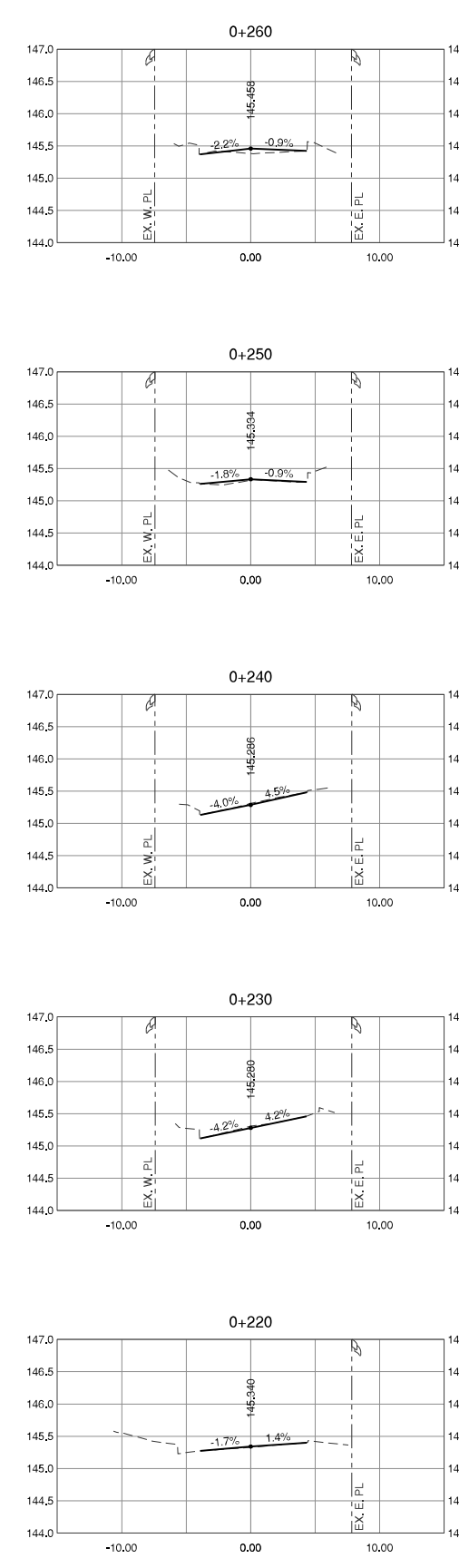
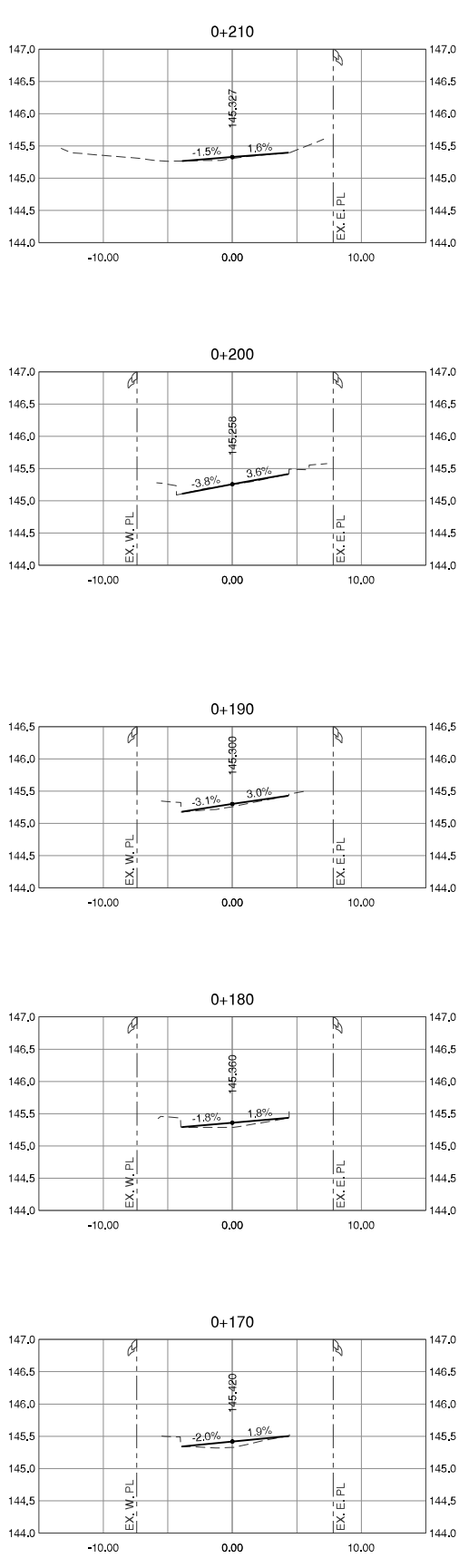
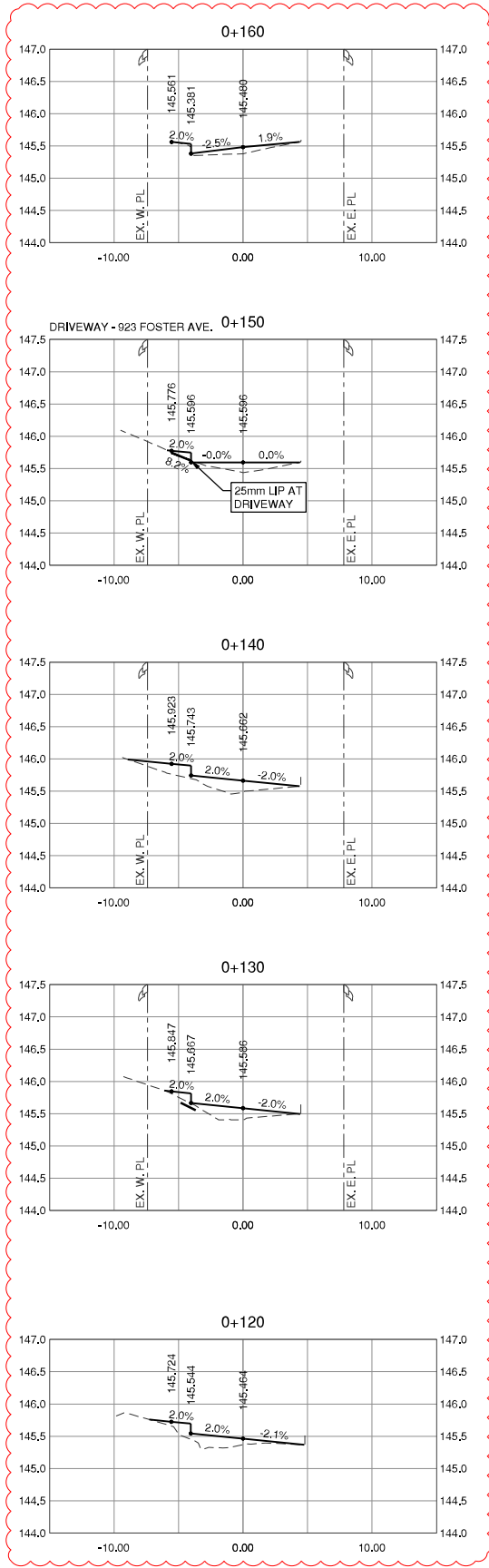
Design by GS	Date 2022-02-04
Drawn by CM	Date 2022-02-04
Checked by TDB	Date 2022-02-10
Approved by TDB	Date 2022-02-10



Scale horiz.	1:250	Scale vert.	1:25
Sheet	21	of	37
Eng. Project No. 73611			

Project	HAILEY ST FOSTER AVE TO COTTONWOOD AVE
Description	ROADWORKS - PLAN AND PROFILE
File:	21-0965-18-R1
	REV. C

FILE: P:\2021\21-0965\21-0965-18 - RS - HSE - HAILEY STORM LAYOUT\_21-0965-18.XSD USER: RODRIGUEZ  
PUBLISHED: 2022-03-17 8:43:35 AM



0 1:250 10m  
0 1:50 2m

DISCLAIMER:  
This drawing must not be reproduced without the written permission of R.F. Birnie & Associates Ltd.  
This drawing is not to be used for construction unless it is stamped 'ISSUED FOR CONSTRUCTION' and signed by R.F. Birnie & Associates Ltd. It is the contractor's responsibility to ensure that he is in possession of the latest revision of this drawing.

Edge of pavement	Watermain and valve	Drainage sewer, MH	Drainage ditch	Sanitary sewer, MH	Sanitary forcemain	Gasmain and valve	Hydro duct, MH	Telephone duct, MH
Hydrant	Water air valve	Water blowoff	Water service	Catch basin, top inlet	Catch basin, round	Comp. signal pole	Traffic signal pole	Junction box
Sanitary service	Sanitary cleanout	Utility pole (joint pole)	Utility pole with light	Streetlight, davit	Streetlight, post top	Survey iron pin	Survey Lead Plug	Survey Monument
Hydra Guy Wire	Hydra Kiosk	Vegetation Canifer	Vegetation Deciduous	Vegetation Shrub	Survey Traverse Hub	Survey Iron Pin	Survey Lead Plug	Survey Monument

No.	Date	By	Revisions
C	2022-03-15		ISSUED FOR ADDENDUM 1
B	2022-02-25	KDD	ISSUED FOR TENDER
A	2022-02-10	GS	100% DESIGN

Design by	GS	Date	2022-02-04
Drawn by	CM	Date	2022-02-04
Checked by	TDB	Date	2022-02-10
Approved by	TDB	Date	2022-02-10

**BINNIE**  
The people behind your infrastructure.  
TEL 604.420.1721 BINNIE.com

**Coquitlam**  
Engineering & Public Works  
3000 Guildford Way, Coquitlam, B.C., V3B 7N2

Scale  
horiz. 1:250  
Sheet 23  
Eng. Project No. 73611

Scale  
vert. 1:50  
of 37

Project  
HAILEY ST  
FOSTER AVE TO COTTONWOOD AVE

Description  
ROADWORKS - CROSS SECTIONS

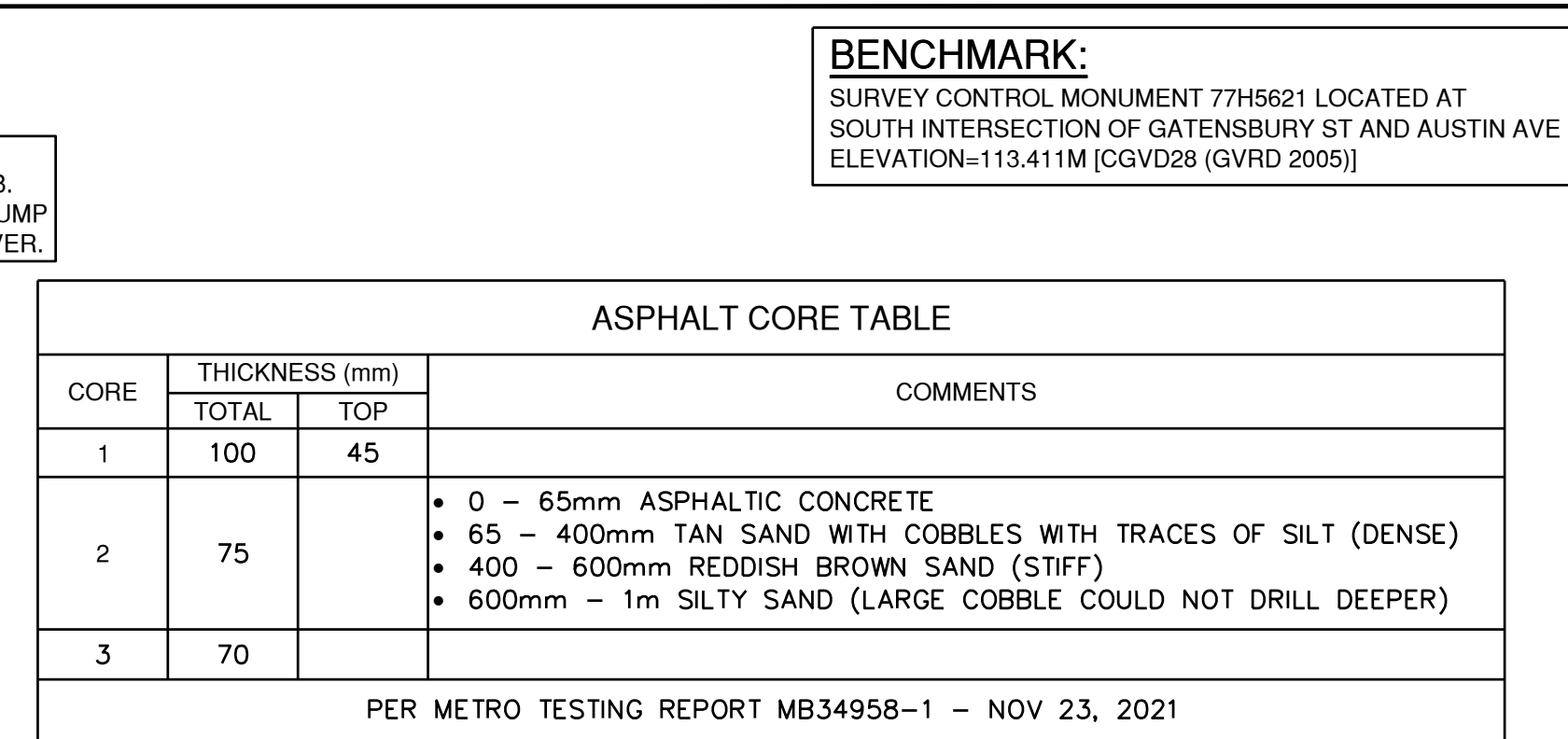
File: 21-0965-18-XS1

REV. C

ISSUED FOR TENDER

Plot Date: March 17, 2022



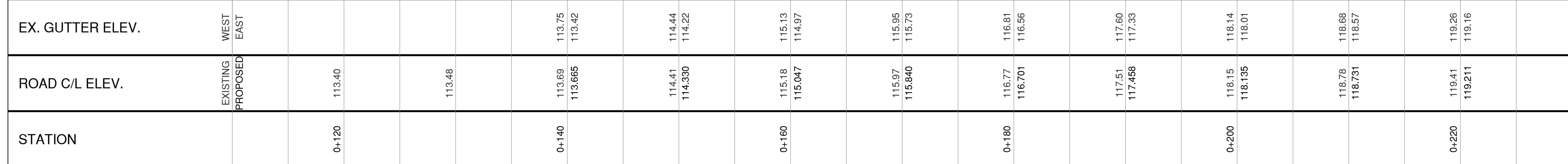


- 50mm - MMCD UPPER COURSE #1 ASPHALT
- 50mm - MMCD LOWER COURSE #1 ASPHALT



<b>A1</b>	PROTECT EX. CONCRETE CURB AND GUTTER. ALL CONCRETE CURB FACES TO BE CLEANED OF DUST AND DEBRIS PRIOR TO PAVING (TYP.).
<b>A2</b>	PROP. CONCRETE BARRIER CURB AS PER MMCD STD. DWG. C5.
<b>B1</b>	PROP. CONCRETE SEPARATED SIDEWALK (100mm THICK) WITH FRONT BOULEVARD. REFER TO MMCD STD. DWG. C2 (TYP.). MATCH EX. SIDEWALK WIDTH.
<b>B2</b>	PROP. MONOLITHIC SIDEWALK (100mm THICK). REFER TO COQUITLAM STD. DWG. COQ-C8. MATCH EX. SIDEWALK WIDTH (TYP.).
<b>D1</b>	PROP. SINGLE CURB RAMP LETDOWN C/W TACTILE STRIP AS PER COQUITLAM STD. DWG. COQ-C9C (DATED NOV/2020). REMOVE AND REINSTATE CONCRETE CURB AND GUTTER AS REQUIRED.
<b>D2</b>	PROP. SPLIT LETDOWN AT INTERSECTION WITH BOULEVARD C/W TACTILE STRIP AS PER COQUITLAM STD. DWG. COQ-C9A (DATED NOV/2020)
<b>F</b>	PROP. 150mm TOPSOIL AND SOD TO BE PLACED IN FRONT BOULEVARD AND AT BACK OF SIDEWALK WHERE IMPACTED BY CONSTRUCTION.
<b>G</b>	EX. CATCH BASIN TO BE MAINTAINED (TYP.). INSTALL SEDIMENT CONTROL DONUT (NILEX MEDURE - PERMEABILITY 0.38 cm/s OR APPROVED EQUIVALENT) ON ALL EX. C/S'S TO ENSURE STORM WATER QUALITY (TYP.).

STATION	EXIST. G.L. ELEV.	PROP. ROAD C/L ELEV.	EXIST. WEST G.L. ELEV.	EXIST. EAST G.L. ELEV.
0+140	113.69 113.665	113.75 113.42		
	114.41 114.330	114.44 114.22		
0+160	115.18 115.047	115.13 114.97		
	115.97 115.840			
0+180	116.77 116.701	116.81 116.56		
	117.51 117.458	117.60 117.33		
0+200	118.15 118.135	118.14 118.01		
	118.78 118.731	118.68 118.57		
0+220	119.41 119.211	119.26 119.16		



Edge of pavement	---	Hydrant		Sanitary service		Hydro Guy Wire	
Watermain and valve	W	Water air valve		Sanitary cleanout		Hydro Kiosk	
Drainage sewer, MH	D	Water blowoff		Utility pole(joint pole)		Vegetation Conifer	
Drainage ditch	---	Water service		Utility pole with light		Vegetation Deciduous	
Sanitary sewer, MH	S	Catch basin, top inlet		Streetlight, davis		Vegetation Shrub	
Sanitary forcemain	SFM	Catch basin, side inlet		Streetlight, post top		Survey Traverse Hub	
Watermain and valve	W	Catch basin, rainout		Survey iron		Survey Level	
Hydro duct, MH	H	Drainage service		Traffic signal pole		Survey Lead Plug	
Telephone duct, MH	T	Drainage cleanout		Junction box		Survey Monument	

D	2022-03-15	GS	ISSUED FOR ADDENDUM 1
C	2022-02-25	KDD	ISSUED FOR TENDER
B	2022-02-10	GS	100% DESIGN
A	2021-12-07	GS	60% DESIGN
No.	Date	Bv	Revisions

Design by GS	Date 2022-02-04
Drawn by GS	Date 2022-02-04
Checked by TDB	Date 2022-02-10
Approved by TDB	Date 2022-02-10



Scale horiz.	1:250	Scale vert.	1:25
Sheet	29	of	37
Eng. Project No. 73327			

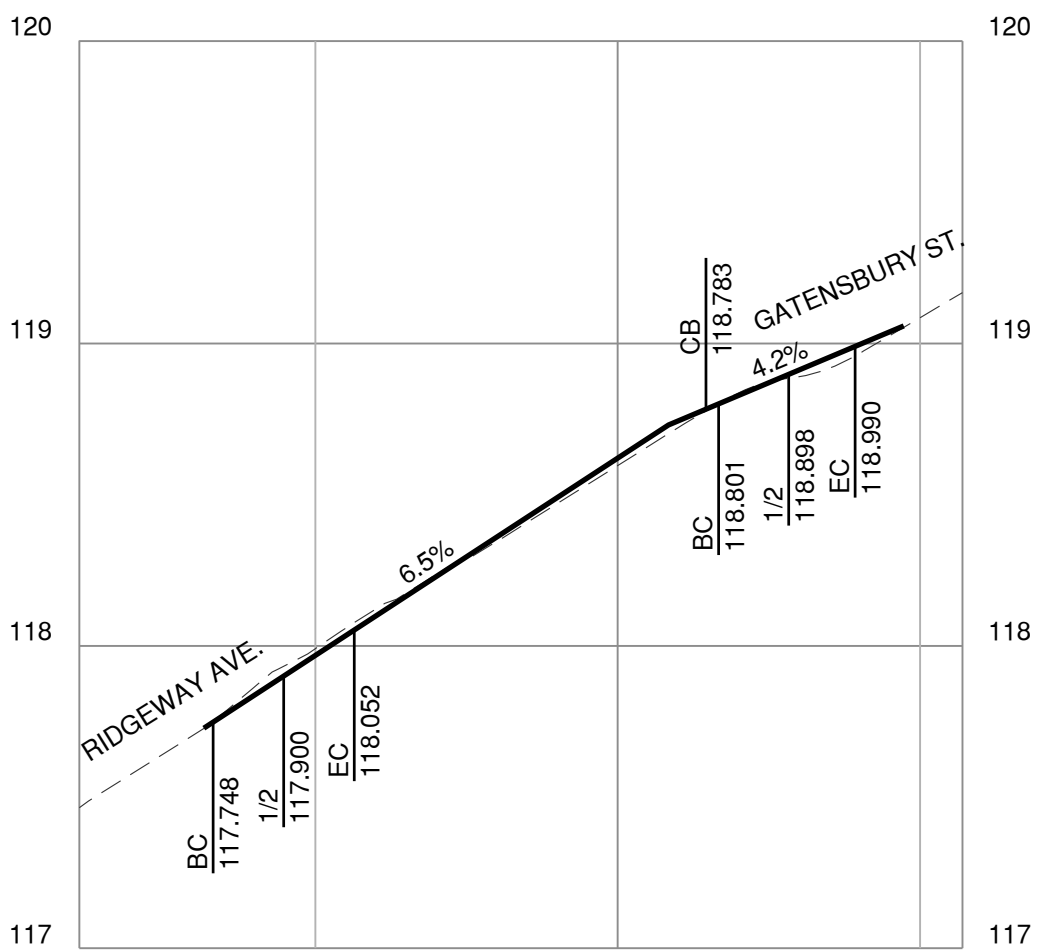
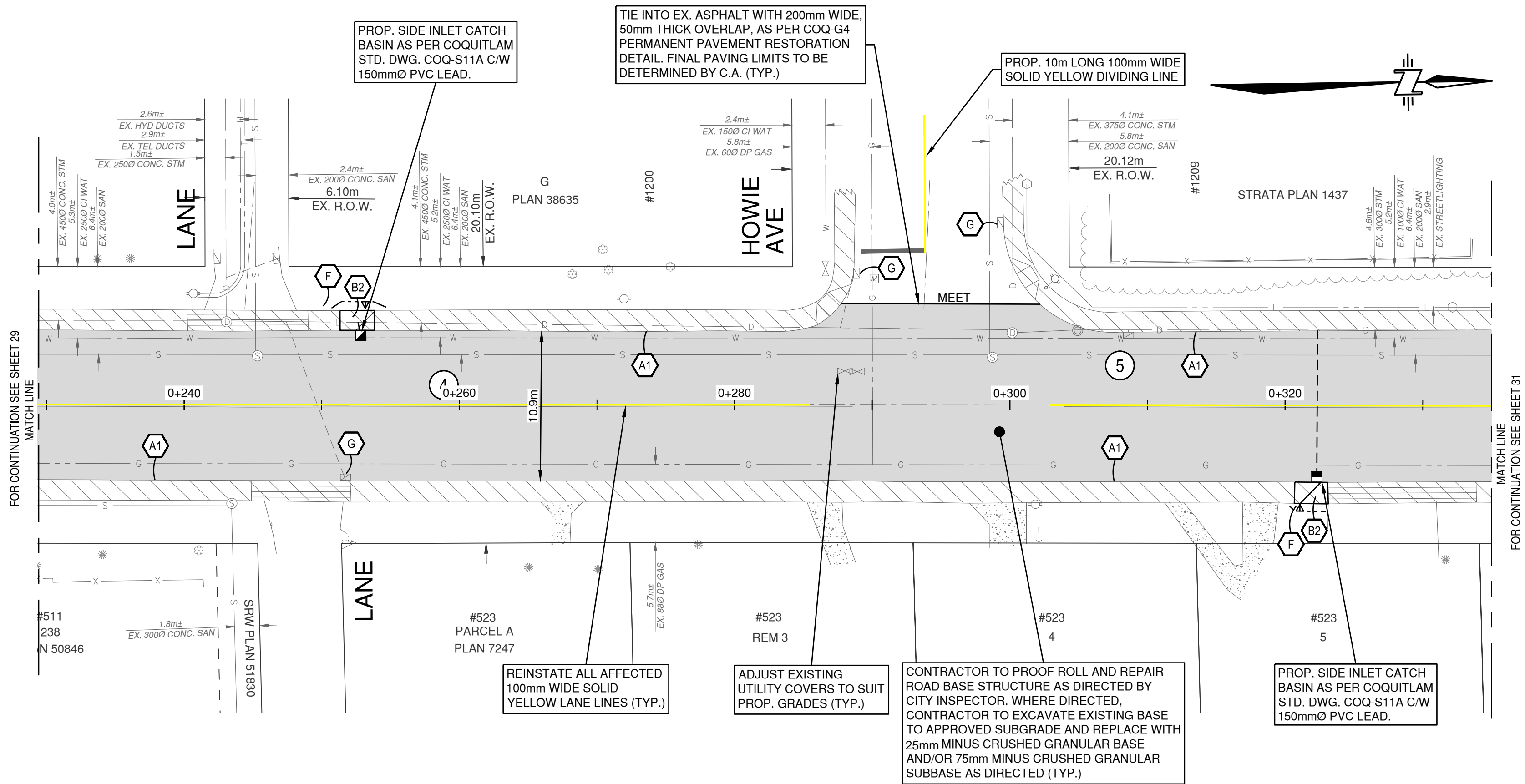
Project	GATENSBURY ST AUSTIN AVE TO WINSLOW AVE	
Description	ROADWORKS - PLAN AND PROFILE	
File:	21-0965-35-R1	REV. D

**ISSUED FOR ADDENDUM**

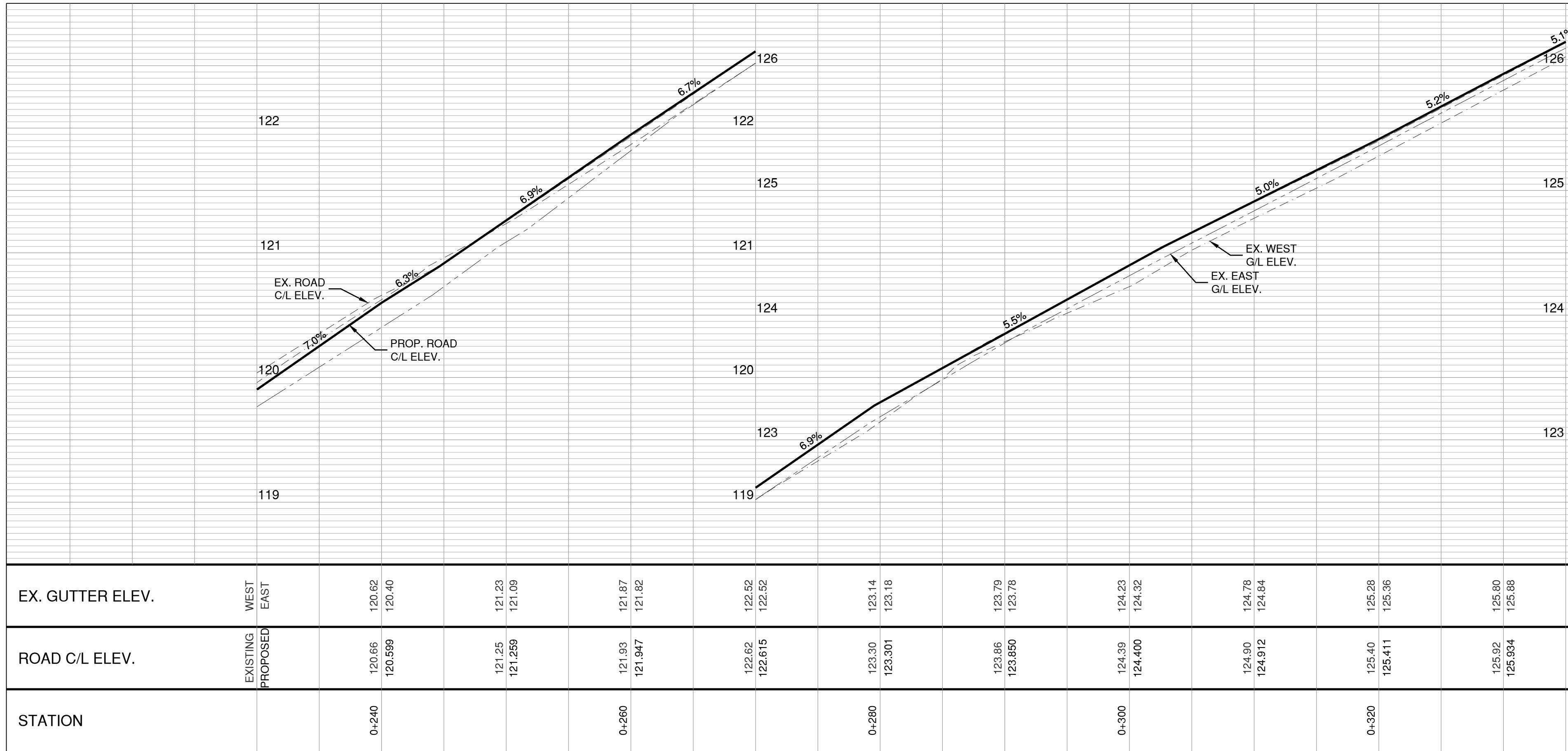
Plot Date: March 15, 2022



**BENCHMARK:**  
SURVEY CONTROL MONUMENT 77H5621 LOCATED AT  
SOUTH INTERSECTION OF GATENSBURY ST AND AUSTIN AVE  
ELEVATION=113.411M [CGVD28 (GVRD 2005)]



## GATENSBURY ST



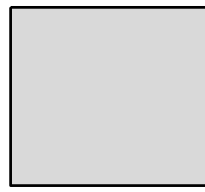
REFER TO SHEET 35  
FOR CROSS SECTIONS.

REFER TO SHEET 01  
FOR GENERAL NOTES.

REFER TO SHEET 31  
FOR TYPICAL SECTIONS.

ASPHALT CORE TABLE			COMMENTS
CORE	THICKNESS (mm)		
	TOTAL	TOP	
4	80		
5	75		

PER METRO TESTING REPORT MB34958-1 - NOV 23, 2021

TREATMENT - FULL DEPTH REPAIR	
	FULL DEPTH MILL AND REMOVE EX. ASPHALT AND REMOVE PORTION OF EX. GRAVELS TO UP TO 150mm BELOW DESIGN GRADES; REGRADE WITH MIN. 50mm THICK 25mm MINUS CRUSHED GRANULAR BASE AND COMPACT TO 95% MODIFIED PROCTOR DENSITY; ADD THE FOLLOWING ROAD STRUCTURE:
	<ul style="list-style-type: none"><li>50mm - MMCD UPPER COURSE #1 ASPHALT</li><li>50mm - MMCD LOWER COURSE #1 ASPHALT</li></ul>

KEY NOTES	
A1	PROTECT EX. CONCRETE CURB AND GUTTER. ALL CONCRETE CURB FACES TO BE CLEANED OF DUST AND DEBRIS PRIOR TO PAVING (TYP.).
B2	PROP. MONOLITHIC SIDEWALK (100mm THICK). REFER TO COQUITLAM STD. DWG. COQ-G8. MATCH EX. SIDEWALK WIDTH (TYP.).
F	PROP. 150mm TOPSOIL AND SOD TO BE PLACE AT BACK OF SIDEWALK WHERE IMPACTED BY CONSTRUCTION.
G	EX. CATCH BASIN TO BE MAINTAINED (TYP.). INSTALL SEDIMENT CONTROL DONUT (NILEX MEDIUM - PERMEABILITY 0.38 cm/s OR APPROVED EQUIVALENT) ON ALL EX. CB'S TO ENSURE STORM WATER QUALITY (TYP.).

ISSUED FOR ADDENDUM

Edge of pavement	Hydrant	Sanitary service	Hydro Guy Wire
Watermain and valve	Water air valve	Sanitary cleanout	Hydro Kiosk
Drainage sewer, MH	Water blowoff	Utility pole(point pole)	Vegetation Canister
Drainage ditch	Water service	Utility pole with light	Vegetation Deciduous
Sanitary sewer, MH	Catch basin, top inlet	Streetlight, dovil	Vegetation Shrub
Sanitary forcemain	Catch basin, side inlet	Streetlight, post top	Survey Traverse Hub
Gasmain and valve	Catch basin, round	Comb signal pole	Survey Iron Pin
Hydro duct, MH	Drainage service	Traffic signal pole	Survey Lead Plug
Telephone duct, MH	Drainage cleanout	Junction box	Survey Monument

No.	Date	By	Revisions
D	2022-03-15	GS	ISSUED FOR ADDENDUM 1
C	2022-02-25	KDD	ISSUED FOR TENDER
B	2022-02-10	GS	100% DESIGN
A	2021-12-07	GS	60% DESIGN

Design by	Date
GS	2022-02-04
Drawn by	Date
GS	2022-02-04
Checked by	Date
TDB	2022-02-10
Approved by	Date
TDB	2022-02-10



Scale	1:250	Scale	1:25
horiz.		vert.	
Sheet	30	of	37
Eng. Project No.	73327		

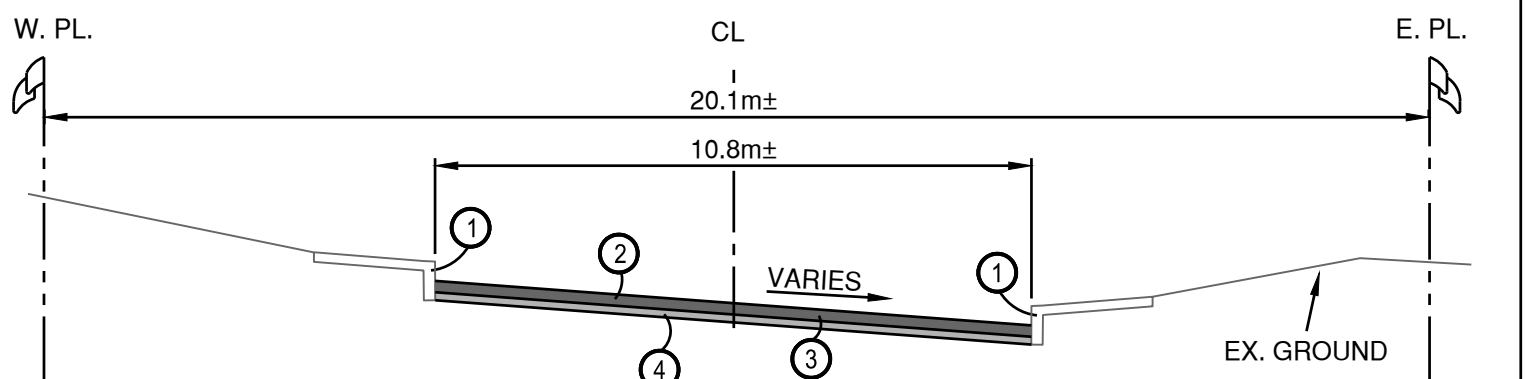
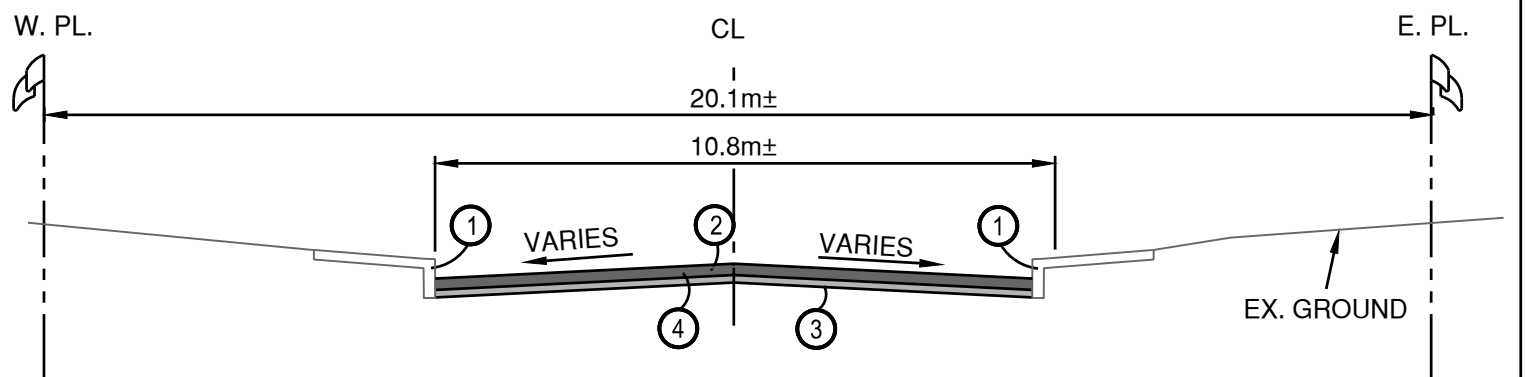
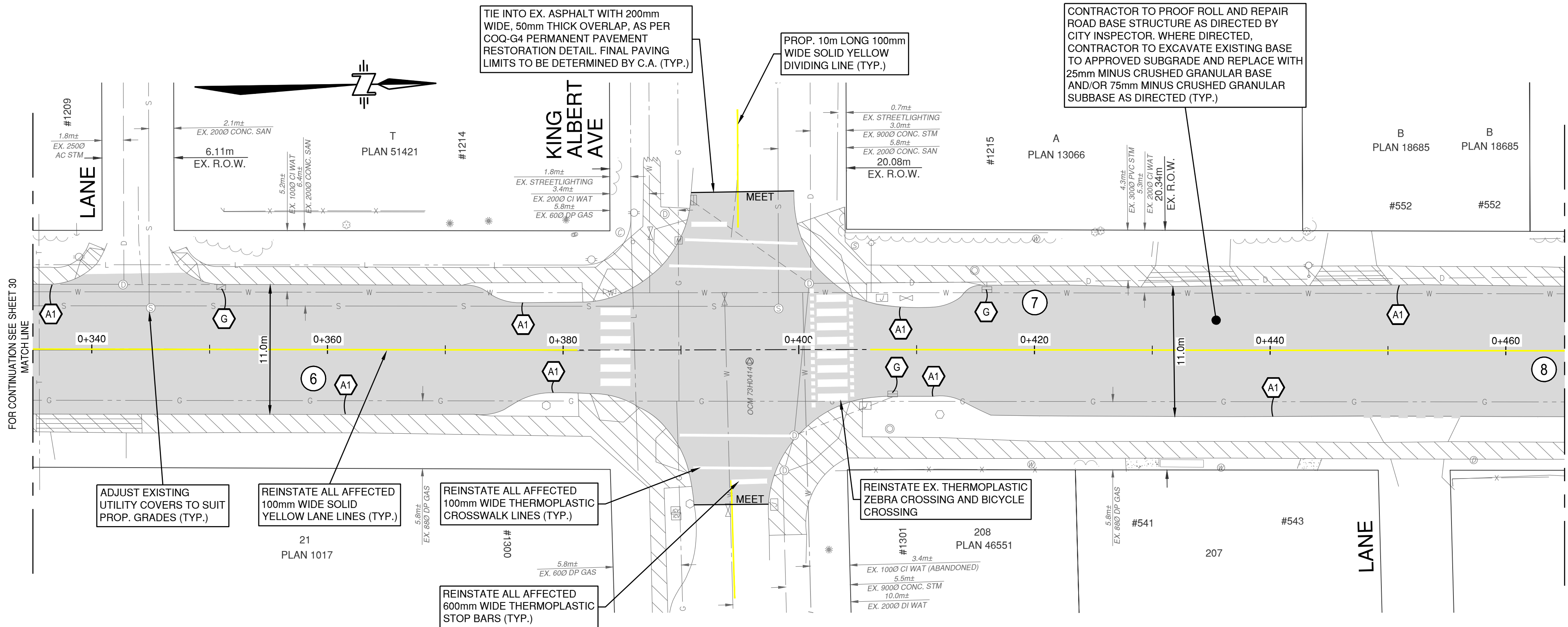
Project	GATENSBURY ST AUSTIN AVE TO WINSLOW AVE
Description	ROADWORKS - PLAN AND PROFILE
File	21-0965-35-R2
REV.	D

FILE: P:\2021\21-0965\00 - CAD FILES\DWG\PLAN\21-0965-35-R2 - PLAN & PROF - GATENSBURY.DWG, LAYOUT: 21-0965-35-R2, USER: CSINCLAR, PLOT DATE: 2022-03-15 15:12:59

Plot Date: March 15, 2022



**BENCHMARK:**  
SURVEY CONTROL MONUMENT 77H5621 LOCATED AT  
SOUTH INTERSECTION OF GATENSBURY ST AND AUSTIN AVE  
ELEVATION=113.411M [CGVD28 (GVRD 2005)]



- EX. CONCRETE CURB AND SIDEWALK TO REMAIN.
- 100mm THICK ASPHALT IN TWO LIFTS:
  - 50mm THICK MMCD UPPER COURSE #1 ASPHALT
  - 50mm THICK MMCD LOWER COURSE #1 ASPHALT
- 50mm MIN. - 25mm MINUS CRUSHED GRANULAR BASE COMPACTED TO 95% MODIFIED PROCTOR DENSITY.
- FULL DEPTH MILL AND REMOVE EX. ASPHALT AND REMOVE PORTION OF EX. GRAVELS AS REQUIRED TO 150mm BELOW DESIGN GRADES.

ASPHALT CORE TABLE

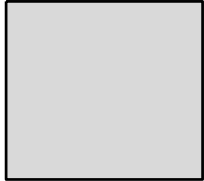
CORE	THICKNESS (mm)		COMMENTS
	TOTAL	TOP	
6	75		
7	100		<ul style="list-style-type: none"><li>0 - 100mm ASPHALTIC CONCRETE</li><li>100 - 400mm TAN SAND AND GRAVEL WITH COBBLES (DENSE)</li><li>400 - 800mm MIXED FILL SILTY SAND AND GRAVEL (SOFT TO MEDIUM SOFT)</li><li>800mm - 1.3m GRAY SAND WITH SOME GRAVEL AND TRACES OF SILT (DENSE)</li></ul>
8	75		CRACKED THROUGH

PER METRO TESTING REPORT MB34958-1 - NOV 23, 2021

KEY NOTES

- A1** PROTECT EX. CONCRETE CURB AND GUTTER. ALL CONCRETE CURB FACES TO BE CLEANED OF DUST AND DEBRIS PRIOR TO PAVING (TYP.).
- G** EX. CATCH BASIN TO BE MAINTAINED (TYP.). INSTALL SEDIMENT CONTROL DONUT (NILEX MEDIUM - PERMEABILITY 0.38 cm/s OR APPROVED EQUIVALENT) ON ALL EX. CB'S TO ENSURE STORM WATER QUALITY (TYP.).

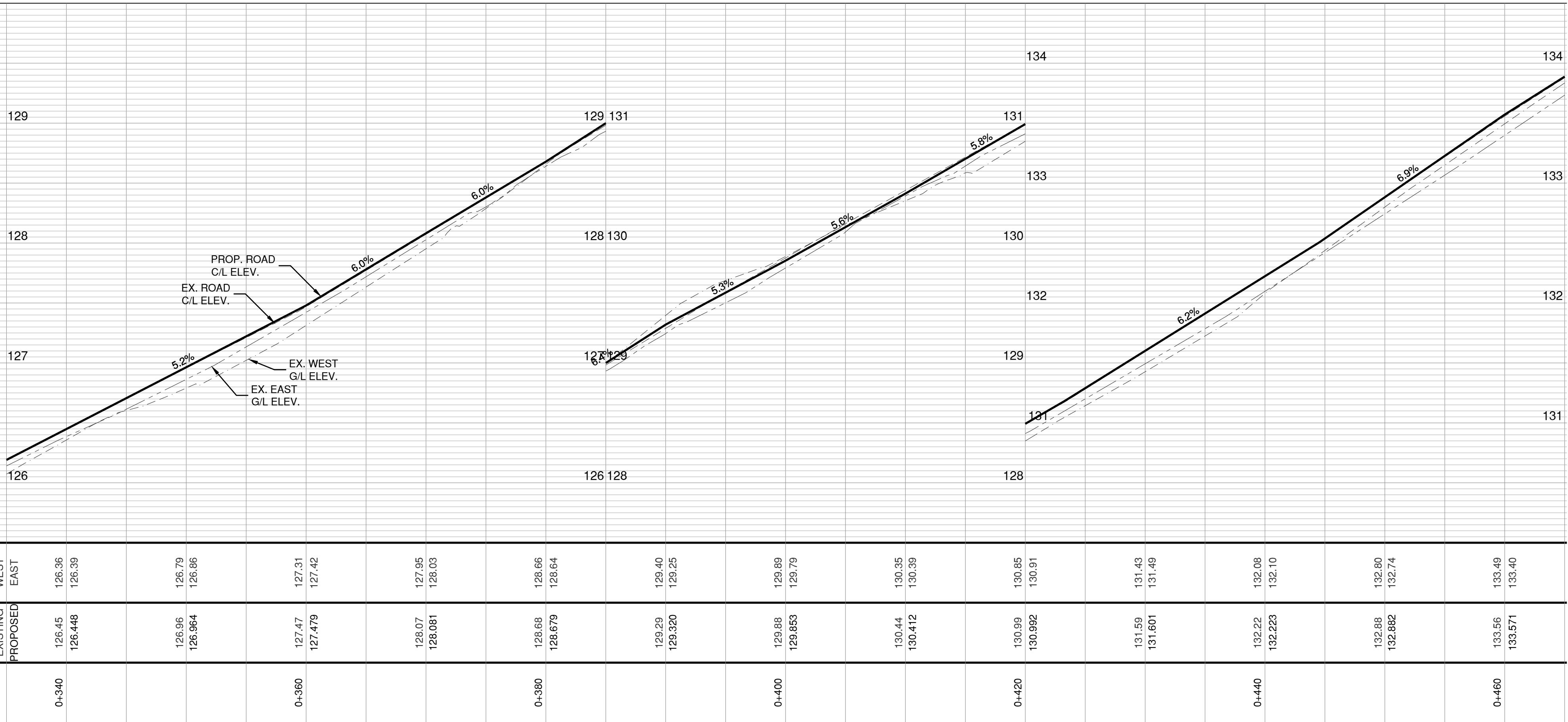
TREATMENT - FULL DEPTH REPAIR



FULL DEPTH MILL AND REMOVE EX. ASPHALT AND REMOVE PORTION OF EX. GRAVELS TO UP TO 150mm BELOW DESIGN GRADES; REGRADE WITH MIN. 50mm THICK 25mm MINUS CRUSHED GRANULAR BASE AND COMPACT TO 95% MODIFIED PROCTOR DENSITY; ADD THE FOLLOWING ROAD STRUCTURE:

- 50mm - MMCD UPPER COURSE #1 ASPHALT
- 50mm - MMCD LOWER COURSE #1 ASPHALT

GATENSBURY ST



0 10m  
H 1:250  
V 1:25  
1m

DISCLAIMER:  
This drawing must not be reproduced without the written permission of R.F. Binnie & Associates Ltd.  
This drawing is not to be used for construction unless it is stamped "ISSUED FOR CONSTRUCTION" and signed by R.F. Binnie & Associates Ltd. It is the contractor's responsibility to ensure that he is in possession of the latest revision of this drawing.

Edge of pavement	Hydrant	Sanitary service	Hydro Guy Wire
Watermain and valve	Water air valve	Sanitary cleanout	Hydro Kiosk
Drainage ditch	Water blowoff	Utility pole (joint pole)	Vegetation Canister
Sanitary sewer, MH	Sanitary service	Utility pole with light	Vegetation Shrub
Sanitary sewer, MH	Catch basin, top inlet	Streetlight, down	Survey Traverse Hub
Sanitary sewer, MH	Catch basin, side inlet	Streetlight, post top	Survey Iron Pin
Sanitary sewer, MH	Catch basin, round	Comb signal pole	Survey Lead Plug
Sanitary sewer, MH	Drainage service	Traffic signal pole	Survey Monument
Sanitary sewer, MH	Drainage cleanout	Junction box	

No.	Date	By	Revisions
D	2022-03-15	GS	ISSUED FOR ADDENDUM 1
C	2022-02-25	KDD	ISSUED FOR TENDER
B	2022-02-10	GS	100% DESIGN
A	2021-12-07	GS	60% DESIGN

Design by	Date
GS	2022-02-04
Drawn by	Date
GS	2022-02-04
Checked by	Date
TDB	2022-02-10
Approved by	Date
TDB	2022-02-10

**BINNIE**  
The people behind your infrastructure.  
TEL 604 420 1721 **BINNIE.com**

**Coquitlam**  
Engineering & Public Works  
3000 Guildford Way, Coquitlam, B.C. V3B 7N2

Scale  
horiz. 1:250  
Sheet 31 of 37  
Eng. Project No. 73327

Project  
**GATENSBURY ST  
AUSTIN AVE TO WINSLOW AVE**  
Description  
**ROADWORKS - PLAN AND PROFILE**  
File: 21-0965-35-R3  
REV: D

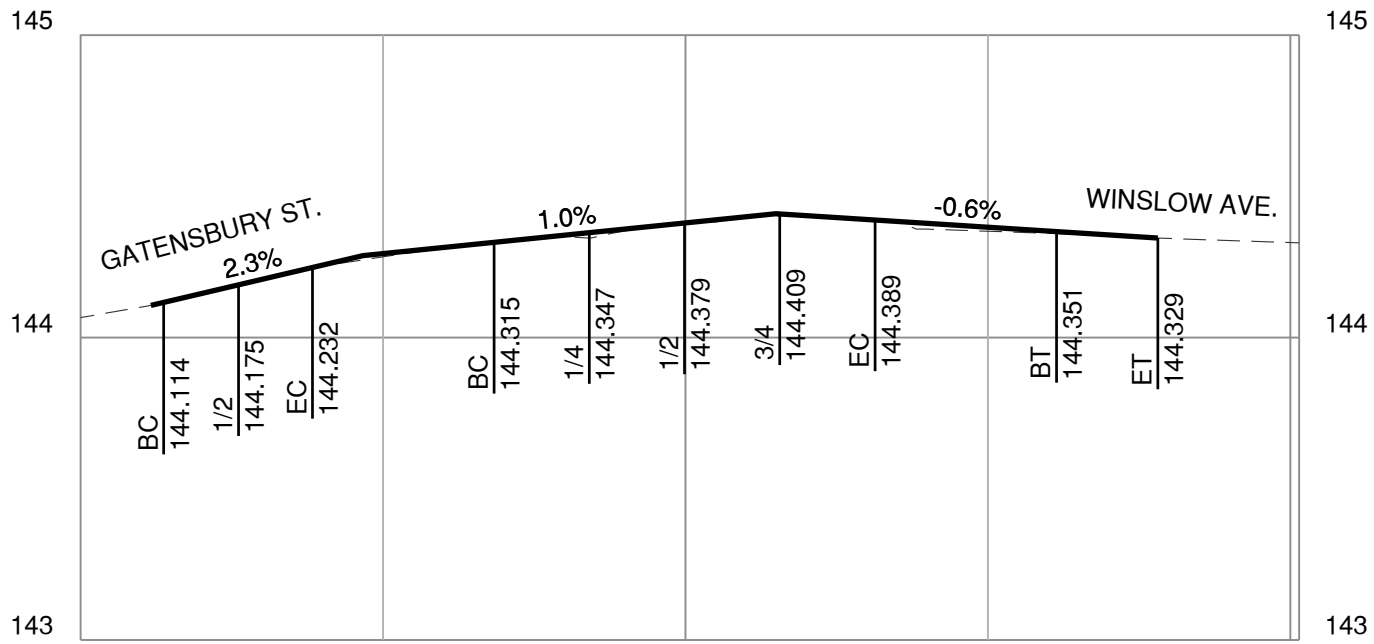
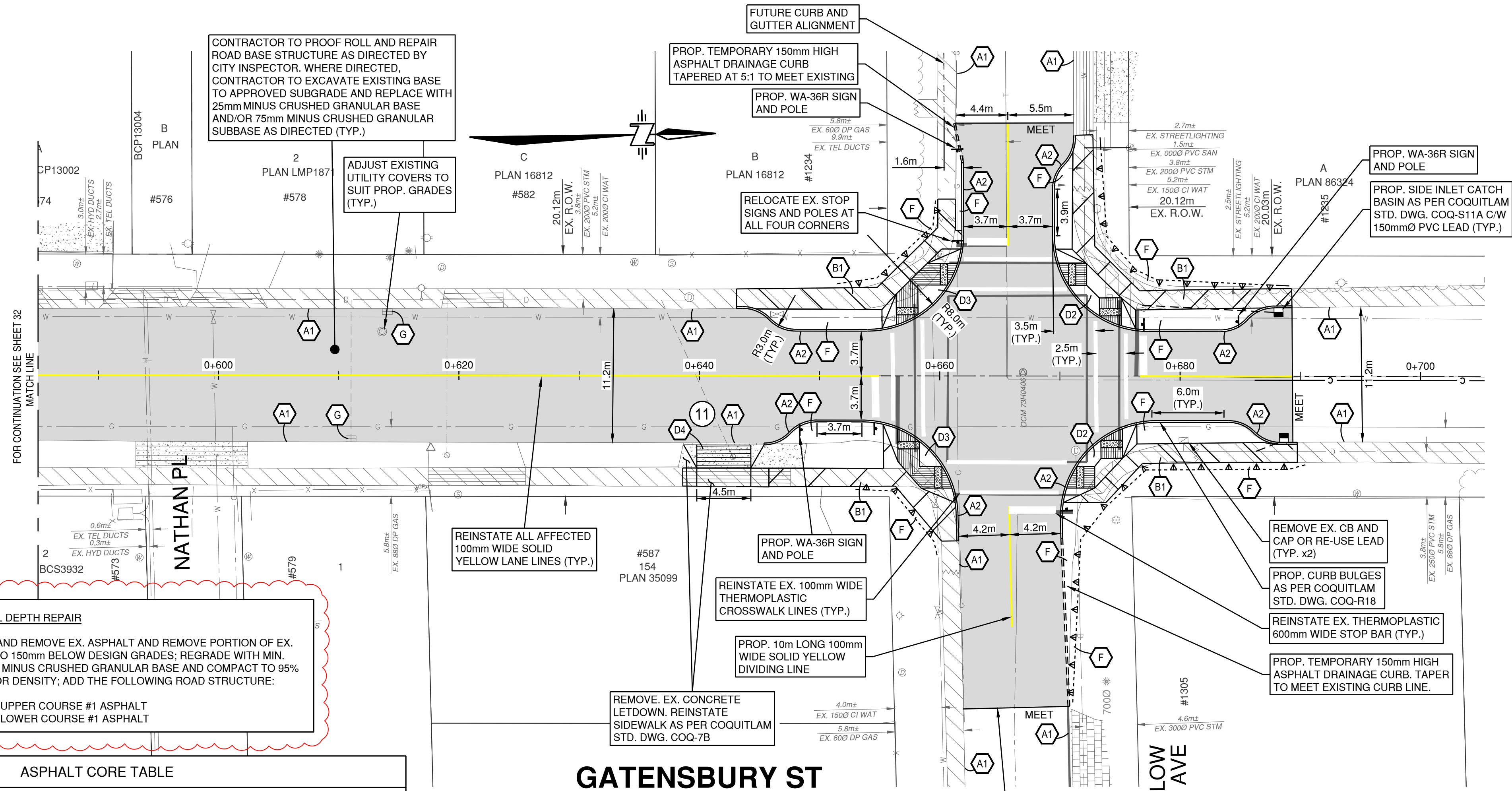
ISSUED FOR ADDENDUM



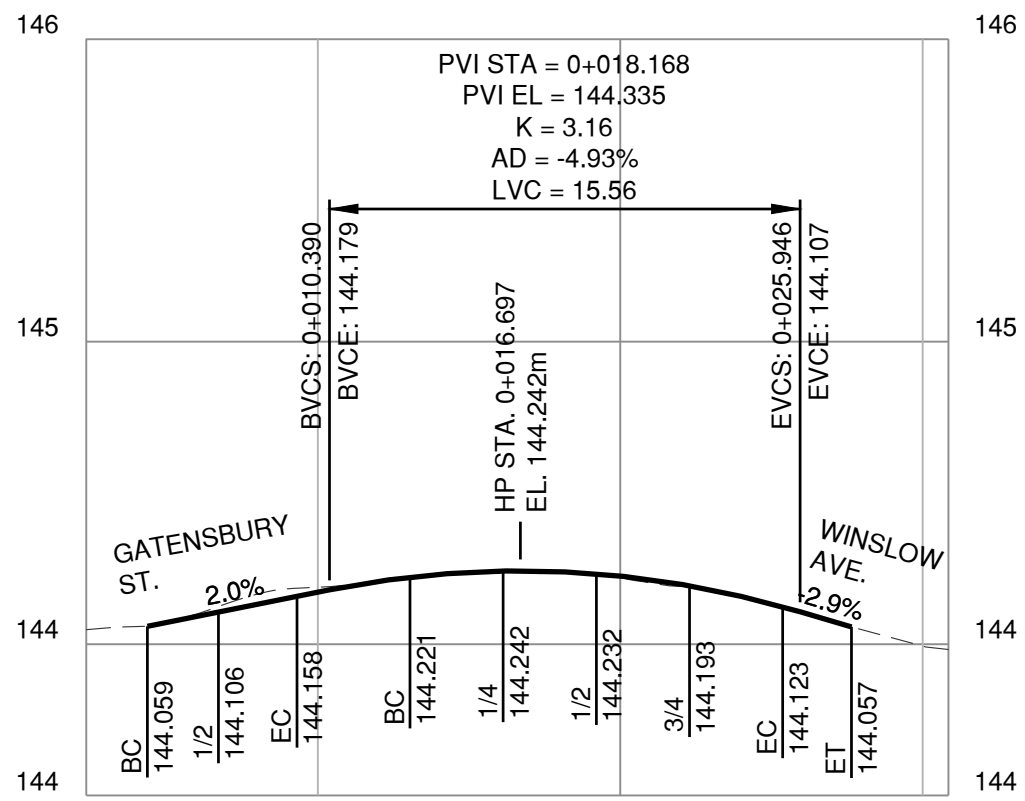




**BENCHMARK:**  
SURVEY CONTROL MONUMENT 77H5621 LOCATED AT  
SOUTH INTERSECTION OF GATENSBUARY ST AND AUSTIN AVE  
ELEVATION=113.411M [CGVD28 (GVRD 2005)]



**SW CURB RETURN PROFILE**  
GATENSBUARY ST AT WINSLOW AVE  
VERT 1:25 HORZ 1:250



**SE CURB RETURN PROFILE**  
GATENSBUARY ST AT WINSLOW AVE  
VERT 1:25 HORZ 1:250

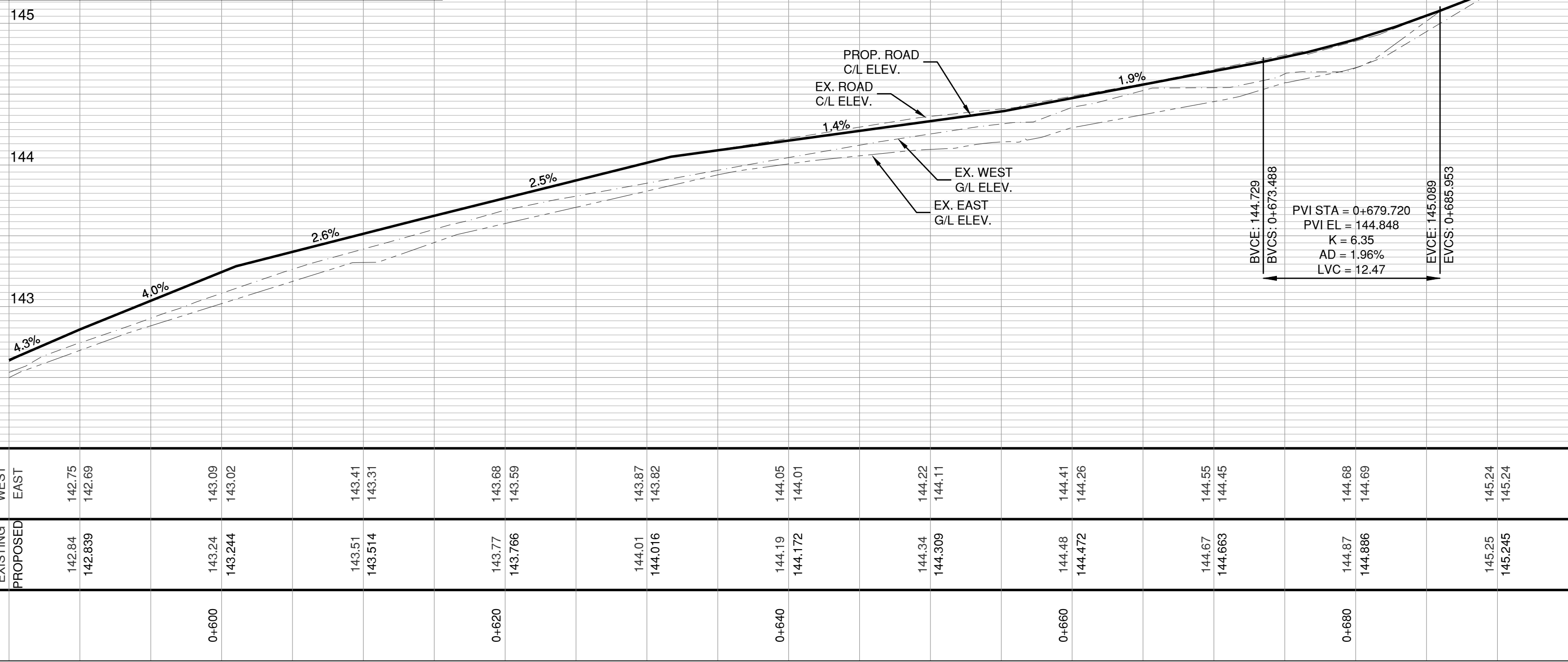
**TREATMENT - FULL DEPTH REPAIR**

FULL DEPTH MILL AND REMOVE EX. ASPHALT AND REMOVE PORTION OF EX. GRAVELS TO UP TO 150mm BELOW DESIGN GRADES; REGRADE WITH MIN. 50mm THICK 25mm MINUS CRUSHED GRANULAR BASE AND COMPACT TO 95% MODIFIED PROCTOR DENSITY; ADD THE FOLLOWING ROAD STRUCTURE:

- 50mm - MMCD UPPER COURSE #1 ASPHALT
- 50mm - MMCD LOWER COURSE #1 ASPHALT

ASPHALT CORE TABLE			COMMENTS
CORE	THICKNESS (mm)		
	TOTAL	TOP	
11	85		<ul style="list-style-type: none"><li>0 - 85mm ASPHALTIC CONCRETE</li><li>85 - 100mm ROAD BASE SAND AND GRAVEL</li><li>100 - 390mm TAN SAND AND GRAVEL</li><li>390 - 1m REDDISH BROWN SAND</li><li>1 - 1.4m GRAY SAND WITH SOME GRAVEL AND TRACES OF SILT (DENSE)</li></ul>

PER METRO TESTING REPORT MB34958-1 - NOV 23, 2021



**KEY NOTES**

- A1** PROTECT EX. CONCRETE CURB AND GUTTER. ALL CONCRETE CURB FACES TO BE CLEANED OF DUST AND DEBRIS PRIOR TO PAVING (TYP.).
- A2** PROP. CONCRETE BARRIER CURB AS PER MMCD STD. DWG. C5.
- B1** PROP. CONCRETE SEPARATED SIDEWALK (100mm THICK) WITH FRONT BOULEVARD. REFER TO MMCD STD. DWG. C2 (TYP.). MATCH EX. SIDEWALK WIDTH.
- D2** PROP. SPLIT LETDOWN AT INTERSECTION WITH BOULEVARD C/W TACTILE STRIP AS PER COQUITLAM STD. DWG. COQ-C9A (DATED NOV/2020)
- D3** PROP. SINGLE LETDOWN AT INTERSECTION WITH BOULEVARD C/W TACTILE STRIP AS PER COQUITLAM STD. DWG. COQ-C9B (DATED NOV/2020)
- D4** PROP. SEPARATED DRIVEWAY LETDOWN AS PER COQUITLAM STD. DWG. COQ-7B (DATED NOV/2020). FLARE WIDTHS TO BE 1.1m WIDE AT CURB.
- F** PROP. 150mm TOPSOIL AND SOD TO BE PLACED IN FRONT BOULEVARD AND AT BACK OF SIDEWALK WHERE IMPACTED BY CONSTRUCTION.
- G** EX. CATCH BASIN TO BE MAINTAINED (TYP.). INSTALL SEDIMENT CONTROL DONUT (NILEX MEDIUM - PERMEABILITY 0.38 cm/s OR APPROVED EQUIVALENT) ON ALL EX. CB'S TO ENSURE STORM WATER QUALITY (TYP.).

**ISSUED FOR ADDENDUM**

Edge of pavement  
Watermain and valve  
Drainage sewer, MH  
Drainage ditch  
Sanitary sewer, MH  
Sanitary forcemain  
Gasmain and valve  
Hydro duct, MH  
Telephone duct, MH

Hydrant  
Water air valve  
Water blowoff  
Water service  
Catch basin, top inlet  
Catch basin, side inlet  
Catch basin, round  
Drainage service  
Drainage cleanout

Sanitary service  
Sanitary cleanout  
Utility pole (joint pole)  
Utility pole with light  
Streetlight, down  
Streetlight, post top  
Comb signal pole  
Traffic signal pole  
Junction box

Hydro Guy Wire  
Hydro Kiosk  
Vegetation Canister  
Vegetation Shrub  
Survey Traverse Hub  
Survey Iron Pin  
Survey Lead Plug  
Survey Monument

No.	Date	By	Revisions
D	2022-03-15	GS	ISSUED FOR ADDENDUM 1
C	2022-02-25	KDD	ISSUED FOR TENDER
B	2022-02-10	GS	100% DESIGN
A	2021-12-07	GS	60% DESIGN

Design by	Date
GS	2022-02-04
Drawn by	Date
GS	2022-02-04
Checked by	Date
TDB	2022-02-10
Approved by	Date
TDB	2022-02-10

**BINNIE**  
The people behind your infrastructure.  
TEL 604 420 1721 BINNIE.com

**Coquitlam**  
Engineering & Public Works  
3000 Guildford Way, Coquitlam, B.C. V3B 7N2

Scale  
horiz. 1:250  
Sheet 33 of 37  
Eng. Project No. 73327

Project  
GATENSBUARY ST  
AUSTIN AVE TO WINSLOW AVE  
Description  
ROADWORKS - PLAN AND PROFILE  
File: 21-0965-35-R5  
REV: D