

City of Coquitlam

Request for Proposals

RFP No. 23-031

One (1) Hydro Excavator/Flush Combo  
Truck

## TABLE OF CONTENTS

<b>DEFINITIONS .....</b>	<b>4</b>
<b>1 INSTRUCTIONS TO PROPONENTS .....</b>	<b>5</b>
1.1 Purpose .....	5
1.2 Proposal Submission .....	5
1.3 Instructions to Proponents .....	5
1.4 Specifications and Alternatives .....	5
1.5 Requested Departures .....	6
1.6 Evaluation Criteria .....	6
1.7 Eligibility .....	7
1.8 Warranties .....	7
1.9 Prices .....	8
1.10 Optional Trade-in Equipment .....	8
<b>2 GENERAL CONDITIONS OF CONTRACT .....</b>	<b>8</b>
2.1 Terms and Conditions of Contract .....	8
<b>3 SCOPE OF SERVICES .....</b>	<b>9</b>
3.1 General Requirements .....	9
3.2 Quality and Workmanship .....	9
3.3 Environmental Considerations .....	9
3.4 Pre-delivery Services .....	9
3.5 Pre-delivery Inspection .....	9
3.6 Delivery .....	9
3.7 Regulatory Requirements .....	10
3.8 Documentation at Time of Delivery .....	10
3.9 Recall Notices .....	10
3.10 Manufacturer-Authorized .....	10

### [PROPOSAL SUBMISSION FORM](#)

### [APPENDIX A – PREFERRED SPECIFICATIONS – vehicle description here \(single axle dump truck\)](#)

**SUMMARY OF KEY INFORMATION**

<b>RFP Reference</b>	<p align="center"><b>RFP No. 23-031</b></p> <p align="center"><b>One (1) Hydro Excavator/Flush Combo Truck</b></p>
<b>Overview of the Opportunity</b>	The purpose of this RFP is to invite Proposals from qualified firms for the supply and delivery of <b>One (1) Hydro Excavator/Flush Combo Truck</b> as specified within this RFP document.
<b>Closing Date and Time</b>	<p align="center"><b>2:00 pm local time</b></p> <p align="center"><b>Friday, February 10, 2023</b></p>
<b>Instructions for Proposal Submission</b>	<p>Proposals are to be consolidated into one PDF file and uploaded electronically through QFile, the City's file transfer service accessed at <a href="https://qfile.coquitlam.ca/bid">qfile.coquitlam.ca/bid</a></p> <ol style="list-style-type: none"> <li><b>In the "Subject Field" enter:</b> RFP Number and Name</li> <li><b>Add files in .pdf format and Send</b> (Ensure your web browser remains open until you receive 2 emails from QFile to confirm receipt.)</li> </ol> <p>Phone 604-927-3060 should assistance be required.</p> <p>The City reserves the right to accept Proposals received after the Closing Date and Time.</p>
<b>Obtaining RFP Documents</b>	<p>RFP Documents are available for download from the City of Coquitlam's website: <a href="https://www.coquitlam.ca/Bid-Opportunities">https://www.coquitlam.ca/Bid-Opportunities</a></p> <p>Printing of RFP documents is the sole responsibility of the Proponents.</p>
<b>Instructions to Proponents</b>	The guidelines for participation that will apply to this RFP are posted on the City's website: <a href="#">Instructions to Proponents</a>
<b>Questions</b>	Questions are to be submitted in writing quoting the RFP number and name up to 3 business days before the Closing Date sent to email: <a href="mailto:bid@coquitlam.ca">bid@coquitlam.ca</a>
<b>Addenda</b>	Proponents are required to check the City's website for any updated information and addenda issued, before the Closing Date at the following website: <a href="https://www.coquitlam.ca/Bid-Opportunities">https://www.coquitlam.ca/Bid-Opportunities</a>
<b>Withdrawal of Submission</b>	Proposals may be withdrawn by written notice only, made by an authorized representative of the Proponent sent to email: <a href="mailto:bid@coquitlam.ca">bid@coquitlam.ca</a> prior to the Closing Date and Time.
<b>Terms and Conditions of Contract</b>	City of Coquitlam <a href="#">Standard Terms and Conditions - Purchase of Goods and Services</a> are posted on the City's website and will apply to the Contract awarded as a result of this RFP.

## DEFINITIONS

**“Agreement” “Contract”** means the contract for services or City Purchase Order that will be issued to formalize with the successful Proponent through negotiation process with the City based on the proposal submitted and will incorporate by reference the Request for Proposals, Specifications, Drawings, any additional subsequent information, any addenda issued, the Proponent’s response and acceptance by the City.

**“City” “Owner”** means City of Coquitlam;

**“CMVSS”** means Canadian Motor Vehicle Safety Standards

**“Price”** means the amount that will be paid by the City to the Contractor for delivery and acceptance of goods and Services;

**“Project Manager”** means the City staff member appointed to coordinate the work;

**“Proponent”** means responder to this Request for Proposals;

**“Proposal”** means the submission by the Proponent;

**“Request for Proposals” “RFP”** shall mean and include the complete set of documents, specifications and addenda incorporated herein, and included in this Request for Proposals;

**“Services” “Work” “Works”** means and includes the provision by the successful Proponent of all services, duties, and expectations as further described in this RFP. This will also mean the whole of the work, tools, materials, labour, equipment, travel, and all that is required to be done, furnished and performed by the Contractor;

**“Shall” “Must” “Will” “Mandatory”** means a requirement that must be met;

**“Supply” “Provide”** shall mean supply and pay for and provide and pay for.

**“Supplier”** means the person(s) firm(s) or corporation(s) appointed by the City to carry out all duties, obligations, work and services described in the Request for Proposal and all associated documentation, which may also include mutually agreed revisions subsequent to submission of a Proposal. Both “Supplier” and “Proponent” are complementary in terms of duties, obligations and responsibilities contemplated at the Request for Proposals stage, through evaluation process, execution and performance of the services and works.

## **1 INSTRUCTIONS TO PROPONENTS**

### **1.1 Purpose**

The purpose of this RFP is to invite proposals from qualified, experienced companies for the supply and delivery of **One (1) Hydro Excavator/Flush Combo Truck** as stated within this RFP. Equipment shall be new and that which has never been owned except by a manufacturer, distributor or dealer and has never been registered.

The City is seeking to identify and select qualified Suppliers that have the knowledge, technical resources, experience, reputation and capacity to supply, deliver and provide continuous support for the equipment.

### **1.2 Proposal Submission**

Proponents should complete and submit the information requested in this RFP document on the **Proposal Submission Form** and [Appendix A – Preferred Specifications](#) or in a format that has been approved and is acceptable to the City.

### **1.3 Instructions to Proponents**

Proponents are advised that the rules for participation that will apply to this RFP are located: [Instructions to Proponents](#).

By submission of a Proposal in response to this RFP, the Proponent agrees and accepts the rules by which the bid process will be conducted.

The City will not be responsible for any delay or for any submission not received for any reason, including technological delays or issues by either party's network or email program, and the City will not be liable for any damages associated with submissions not received.

### **1.4 Specifications and Alternatives**

Wherever the Specifications state a brand name, make, name of manufacturer, trade name, or Supplier catalogue number, it is for the purpose of establishing a grade or standard. It is not intended to rule out competition from equal brands or makes. If vehicles or equipment other than that specified is offered, it is the Proponent's responsibility to provide information in its Proposal that enables the City to confirm equivalency and acceptance.

Except where stated otherwise, Appendix A – Preferred Specifications, describe what is considered necessary to meet the performance requirements of the City and Proponents should consider this in its Proposal. If the Proponent cannot meet Specifications, the Proponent may identify and offer an alternative which it believes to be an equal or better alternative.

Special consideration may be given to accessibility of the various units which require periodic maintenance and ease of operation.

Proponents shall clearly indicate any variances from the City's Specifications or conditions and attach descriptive literature.

Proponents may also propose alternative equipment which meets the majority of the specifications if it is immediately available for delivery. The City will review proposed alternative equipment for suitability in order to take delivery sooner; however, the City is not

obligated to accept any alternatives. The City will determine what constitutes acceptable deviations and overall best value.

Proponents are to provide environmentally efficient equipment and services wherever possible. If there are known alternatives or substitutions for such materials that would mitigate the effects of any adverse conditions on the environment, the Proponent agrees to advise the City of such alternatives or substitutions.

#### 1.5 Requested Departures

The Proponent acknowledges that the departures requested in the Proposal Submission Form will not form part of the Contract unless and until the City specifically consents in writing to any of them. The City may not consider any departures not stated in the Proponent's Proposal Submission.

#### 1.6 Evaluation Criteria

Evaluation Criteria of each proposal will be determined in accordance with the following:

Proposal Evaluation Summary	Maximum Points to be Awarded
Corporate Experience, Reputation, Capacity and Resources	30
Technical	30
Financial and Value Added	40
Total	100

The criteria for evaluation of the Proposals may include, but is not limited to:

##### **Corporate Experience, Reputation, Capacity and Resources**

- Business and technical reputation and capabilities; experience, financial stability, capacity and resources
- References (on time delivery, support, performance, etc.)

##### **Technical**

- Delivery Lead Time
- Compliance with the preferred specifications
- Ease of operation
- Maintenance requirements
- Maintenance - Local support and parts availability in Metro Vancouver area
- Warranties
- Training
- Demonstration Unit

##### **Financial and Value Added**

- Financial offer including, but not limited to, prices, operating and maintenance costs,

- Value Added / Sustainable benefits

These criteria will be used to determine best overall value to the City. Proposals will be compared to select one or more that are most advantageous.

And, upon selection of one or more lead Proponent(s):

- References may be contacted
- Interviews may be conducted

The City reserves the right to check references on other projects even if they are not specifically listed. Information obtained from references will be confidential and will not be disclosed to any Proponents.

These criteria will be used to determine best overall value to the City as well as any other criteria that may become evident during the evaluation process.

The City may, at its discretion, request clarification or additional information from a Proponent with respect to any Proposal and the City may make such requests to only selected Proponents. The City may consider such clarifications or additional information in evaluating a Proposal.

Incomplete Proposals or Proposals submitted on forms other than the Proposal Form may be rejected.

Proponents agree the City may disclose names of Proponents and total award amount, however, unevaluated results, unit prices, rates or scores will not be provided to any Proponents.

The City reserves the right to reject without further consideration any Proposal which in its opinion does not meet the criteria it considers essential for the work outlined in this RFP.

Where only one Proposal is received, the City may reject such and re-issue the RFP on a selected basis.

#### 1.7 Eligibility

For eligibility, and as a condition of award, the successful Proponent would be required to meet or provide the equivalent:

- a) Accept the City's standard Terms and Conditions posted on the City's website: [Standard Terms and Conditions - Purchase of Goods and Services](#)
- b) A City of Coquitlam or Tri Cities Intermunicipal [Business License](#)

#### 1.8 Warranties

The Proponent shall provide a full statement of the warranty period and terms, including extended warranty options, for items listed in [Appendix A – Preferred Specifications](#), as a minimum. This warranty should clearly describe the terms under which the equipment manufacturer or sub-suppliers of the manufacturer accept responsibility for the cost to repair defects caused by faulty design, quality of work or material and for the applicable period of time after delivery.

## 1.9 Prices

Prices shall be all-inclusive and stated in (Canadian Funds). Prices shall remain FIRM for the delivery of equipment and completion of the Services.

Supply and delivery of materials is to be included in the price, FOB, Freight Prepaid to:

**City of Coquitlam  
Works Yard West  
500 Mariner Way  
Coquitlam, BC, V3K 7B6**

Prices shall include the provision of all tools, materials, equipment, labour, transportation, fuel, supervision, management, overhead, materials, traffic control, services, all necessary packing and crating (where applicable), Canadian Customs import and export duties, freight, handling, insurance, all other associated or related charges, foreign, federal, provincial and municipal taxes, bonding costs, all licences, permits, inspections and all other requirements necessary for the commencement, performance and completion of Services as described.

Taxes are to be shown separately at time of invoicing.

The lowest price of any Proposal will not necessarily be accepted but will be analyzed to determine best overall value.

## 1.10 Optional Trade-in Equipment

The City offers the following equipment for trade-in consideration:

VIN #	Year	Truck Hours	Description
1NPSL50X5DD209350	2013	11,134	Peterbilt with Vactor 2112 Fan Combination Catch Basin/Sewer Cleaner

See [Figure 1](#) for vehicle pictures

Proponents are encouraged to view the trade in unit.

**Location:** City of Coquitlam Works Yard

**Address:** 500 Mariner Way, Coquitlam, BC

**Date and Time:** Friday February 3, 2023 at 10:00 AM.

## 2 **GENERAL CONDITIONS OF CONTRACT**

### 2.1 Terms and Conditions of Contract

The City's [Standard Terms and Conditions - Purchase of Goods and Services](#), as published on the City's website, the Conditions listed in this RFP, along with the accepted Proposal, addenda and any subsequent clarifications, correspondence, the totality of which will constitute the Contract.



### 3 SCOPE OF SERVICES

#### 3.1 General Requirements

The Supplier is to provide **One (1) Hydro Excavator/Flush Combo Truck** to be used in a municipal environment as specified in **Appendix A – Preferred Specifications**.

The unit is to be the current production model with all the latest updates including, where requested, all manuals, instructions, training and requested spare parts.

The Services include, but are not limited to:

- Supply and Delivery of the equipment proposed;
- Provide local (Metro Vancouver) dealer warranty service;
- Provide post-delivery services and parts availability at a local dealer area; and
- Preventative maintenance schedule.

#### 3.2 Quality and Workmanship

The quality and workmanship of the completed delivered product must meet or exceed that of any sample, demo unit, or any other representation made by the Supplier prior to delivery.

Vehicles and equipment shall comply with all applicable legislated and regulatory standards. All welding shall meet American Welding Society or Canadian Welding Bureau current standards.

#### 3.3 Environmental Considerations

Equipment offered is to be environmentally friendly, including but not limited to the manufacturing process, materials, oils, lubricants, paints and other fluid materials, wherever possible.

#### 3.4 Pre-delivery Services

The equipment shall be delivered clean and shall be complete with all equipment required for the equipment to be operable. The delivered equipment will be inspected for compliance with the approved Purchase Order and current standards.

#### 3.5 Pre-delivery Inspection

A road performance test and general operation inspection must be performed prior to delivery.

#### 3.6 Delivery

Delivery is to be made with **minimum 48 hours' notice**, at a scheduled time that is mutually acceptable to the City, freight prepaid F.O.B to:

**City of Coquitlam  
Works Yard West  
500 Mariner Way  
Coquitlam, BC, V3K 7B6**

An authorized representative of the Supplier shall supervise delivery to the City.

### 3.7 Regulatory Requirements

The vehicles must have a standard road package that meets all legal requirements for operation on public roadways, including the BC Motor Vehicle Act, the federal Motor Vehicle Safety Act and Work Safe BC regulations.

Must comply with all WorkSafe BC Regulations.

Must meet all B.C. Motor Vehicle Regulations and meets all requirements to be driven on highways, roads, etc.

Meet Canadian motor vehicle safety standards.

### 3.8 Documentation at Time of Delivery

The Supplier is to provide the following documentation upon delivery with each piece of equipment:

Quantity	Description
4 sets	<b>KEYS</b> - All keys (four full sets), a complete parts list, and service manuals are to be delivered with the vehicle
1	Manufacturer's <b>Certificate of Origin</b>
1	<b>Warranty</b> document and certifications
1 set	One complete <b>Service Manual</b> to cover, but not limited to, tires, engine, batteries, transmission, axles, electrical components to cover each piece of equipment proposed
1 set	One <b>Parts Manual</b> covering the entire piece of equipment proposed
1 set	One set of <b>As-built Electrical Wiring Schematics</b> to cover any and all wiring not installed by chassis manufacturer. This diagram to include part numbers and brand names of switches, lights, etc. of parts used
1 list	Complete <b>PARTS LIST</b> of all belts, hoses, and filters; including part numbers, manufacturer and use
1 list	All <b>Fluid Capacities</b> in litres.

### 3.9 Recall Notices

In the event of any recall notice, technical service bulletin, or other important notification affecting a unit purchased under this Contract, a notice shall be sent to the City. It shall be the responsibility of the Supplier to assure that all recall notices are sent directly to the City Fleet department.

### 3.10 Manufacturer-Authorized

Supplier must be authorized by the manufacturer to sell vehicles and parts where such authorization is granted by the manufacturer. The relationship with the manufacturer must be direct and not indirect through a third party.

**Figure 1**  
**Vehicle pictures**

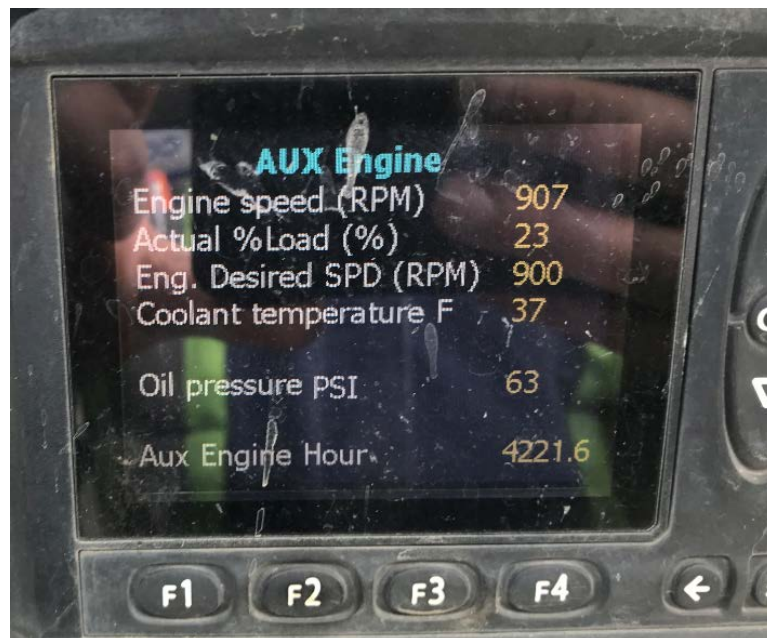
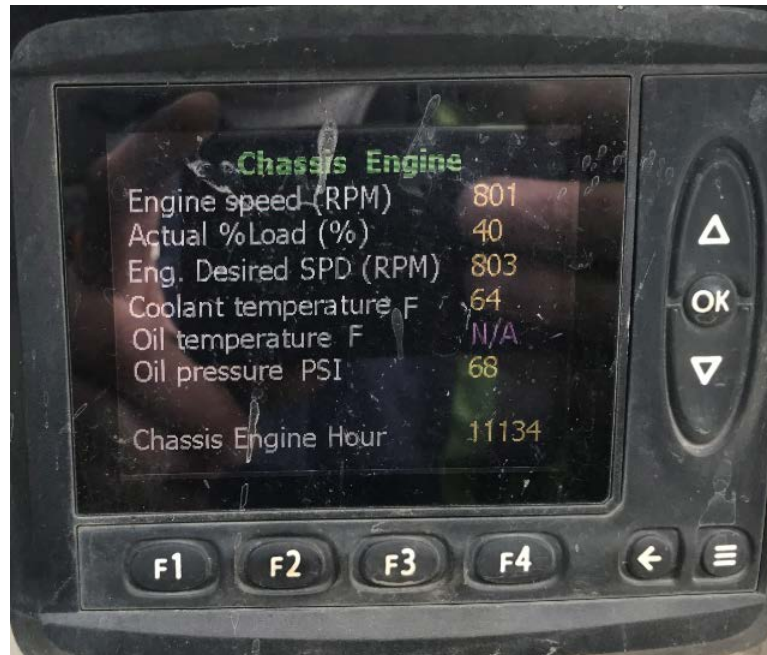


Truck Km



Truck Hours







City of Coquitlam

## PROPOSAL SUBMISSION FORM

RFP No. 23-031

### One (1) Hydro Excavator/Flush Combo Truck

Proposals will be received on or before 2:00 pm local time on

Friday, February 10, 2023

(Closing Date and Time)

#### **INSTRUCTIONS FOR PROPOSAL SUBMISSION**

Proposal submissions are to be returned in Microsoft Word and any other supporting documents to be consolidated into one PDF file and uploaded through QFile, the City's file transfer service accessed at website: [qfile.coquitlam.ca/bid](https://qfile.coquitlam.ca/bid)

**1. In the "Subject Field" enter:** RFP Number and Name

**2. Add files in .pdf format and "Send"**

(Ensure your web browser remains open until you receive 2 emails from QFile to confirm upload is complete.)

Proponents are responsible to allow ample time to complete the Proposal Submission process. If assistance is required phone 604-927-3060.

<b>Legal Name of Proponent</b>	
<b>Contact Person and Title</b>	
<b>Business Address</b>	
<b>Telephone</b>	
<b>Email Address</b>	



1.

## DEPARTURES AND AWARD

<b>a) CONTRACT</b> - I/We have reviewed the City's <a href="#">Standard Terms and Conditions - Purchase of Goods and Services</a> and would be prepared to enter into in an agreement that incorporates the City's Standard Terms and Conditions, amended by the following departures (list, if any):	
Section	Requested Departure(s) / Alternative(s)
<b>b) SERVICES</b> - I/We have reviewed the Scope of Services as described in this RFP and are prepared to meet those requirements, amended by the following departures and additions (list, if any):	
Requirements – Requested Departure(s) / Alternate(s) / Addition(s)	
<b>c) AWARD</b> - For eligibility of award, the City requires the successful Proponent to complete and have the following in place before providing the Goods and Services. <b>Section 1c items are not required as part of this Proposal but may be required prior to entering into an agreement with the City.</b>	
i. <b>Vendor Info</b> - Complete and return the City's <a href="#">Vendor Profile and Electronic Funds Transfer Application (PDF)</a>	
ii. <b>Business License</b> - A City of Coquitlam or Tri Cities Intermunicipal <a href="#">Business License</a>	
iii. <b>Contract</b> – Acceptance of the City's Terms and Conditions: <a href="#">Standard Terms and Conditions - Purchase of Goods and Services</a>	
<b>As of the date of this Proposal, we advise that we have the ability to meet all of the above requirements except as follows (list, if any):</b>	

2.

## CORPORATE

### a) DEMONSTRATION UNITS

Availability, location and notification required to arrange for a demonstration and testing of the following equipment as proposed:

**\*\*The City may choose to use the demo vehicle in the field for one day\*\***

### b) CAPABILITIES, CAPACITY AND RESOURCES - Proponents to provide information on the following (use the spaces provided and/or attach additional pages, if necessary):

i. Structure of the Proponent, background, how many years they have been in business and organizational history (e.g. mission, vision, corporate directions, years in business, etc.):

ii. Proponent is to provide a narrative as to their experience and capabilities in delivering goods and Services similar to those requested in this RFP:

iii. Proponent is to state how many customers they have using One (1) Hydro Excavator/Flush Combo Truck :

### c) REFERENCES – Proponent shall be competent and capable of performing the Services requested and successfully delivered service contracts of similar size, scope and complexity. The City reserves the right to contact any person(s), agency(ies) or firm(s) not listed as part of an independent review.

#### Reference No. 1

<b>Description of Contract</b>	
<b>Size and Scope</b>	
<b>Work Performed</b>	
<b>Start Date</b>	
<b>End Date</b>	
<b>Contract Value</b>	
<b>Project completed on budget</b>	
<b>Project completed on schedule</b>	



<b>Reference Information</b>	Company:
	Name:
	Phone Number:
	Email Address:

<b>Reference No. 2</b>	
<b>Description of Contract</b>	
<b>Size and Scope</b>	
<b>Work Performed</b>	
<b>Start Date</b>	
<b>End Date</b>	
<b>Contract Value</b>	
<b>Project completed on budget</b>	
<b>Project completed on schedule</b>	
<b>Reference Information</b>	Company:
	Name:
	Phone Number:
	Email Address:

<b>Reference No. 3</b>	
<b>Description of Contract</b>	
<b>Size and Scope</b>	
<b>Work Performed</b>	
<b>Start Date</b>	
<b>End Date</b>	
<b>Contract Value</b>	
<b>Project completed on budget</b>	
<b>Project completed on schedule</b>	
<b>Reference Information</b>	Company:
	Name:
	Phone Number:
	Email Address:

**3. TECHNICAL**

**a) LEAD TIME FOR DELIVERY**

The lead time for delivery of the new unit is an important consideration in this purchase. The Proponent guarantees to deliver the vehicle(s) F.O.B. (freight pre-paid) to:

**City of Coquitlam, Works Yard West, 500 Mariner Way, Coquitlam, BC.**

Lead time in days for manufacture and delivery once the final specification is approved by the City:

**b) KEY FACILITY LOCATIONS**

Manufacturing Plant, Business Name and Location:

**I. Warranty and Repair Service Center**

State location of nearest affiliate service facilities with factory authorized technicians located in Metro Vancouver area. Business Name and Location:

**II. State the procedure for handling warranty claims:**

**c) MRO Parts Distribution Center**

**I. Business Name and Location:**

**II. Regular Lead Time for Delivery of Stocked Parts:**

**III. Provide a list and details of stocked parts available at the local dealership for the equipment proposed (attach additional information if necessary):**

**IV. Location for non-stocked parts:**

**V. Regular Lead Time of Non- Stocked Parts:**

<b>d) Quality Assurance</b>	
I.	Provide information on the systems of Quality Control and build specification assurance.
II.	<b>Preventative Maintenance</b> – Provide preventative maintenance schedule. Attach if necessary

<b>e) TRAINING AND MANUALS</b>	
I.	<b>Operators</b> – state duration of training, number of attendees and number of on-site workshops at Coquitlam Works Yard:
II.	<b>Fleet and Maintenance</b> – state duration of training, number of attendees, number of workshops and Location
III.	<b>Training Method</b> – State type of training method used to teach.
IV.	<b>Manuals</b> (online/web based/DVD/paper manuals) included: <ul style="list-style-type: none"> <li>• 1 parts manual</li> <li>• 1 repair manual for truck and all mounted equipment</li> <li>• 1 service manual</li> <li>• 2 Operator's manuals</li> <li>• Wiring schematics including all installed systems and equipment</li> </ul> <b>State format available:</b>
V.	<b>Training Materials:</b> Access to online/web based or DVD training, 1 for Operators and 1 for Mechanics <b>Confirm and State format available:</b>

<b>f) WARRANTIES AND EXTENDED WARRANTIES</b>	
Attach Warranty information including extended warranties. Any additional cost is to be stated:	
Manufacturer Warranty	<b>State:</b>

5. **FINANCIAL**

a) One (1) Hydro Excavator/Flush Combo Truck In accordance with <b>APPENDIX A – PREFERRED SPECIFICATIONS</b>			
<b>One (1) Hydro Excavator/Flush Combo Truck – State Manufacturer and Model:</b>			
	<b>Item</b>	<b>Quantity</b>	<b>Unit Price</b> (exclude PST & GST)
a)	<b>One (1) Hydro Excavator/Flush Combo Truck</b>	<b>1</b>	<b>\$</b>
	<b>Levies (per unit):</b>	<b>1</b>	<b>\$</b>
b)	<b>Environmental Tax (per unit):</b>	<b>1</b>	<b>\$</b>
<b>Sub-Total</b>			<b>\$</b>
<b>PST</b>			<b>\$</b>
<b>GST</b>			<b>\$</b>
<b>TOTAL PRICE (per unit)</b>			<b>\$</b>
<b>TOTAL PRICE (x Units)</b>			<b>\$</b>
The Price must include all required decals, paint and any features required to be compliant with all regulations and standards and be fully operational.			

b) Optional Unit for Trade-in			
<b>Coquitlam Unit No.</b>	<b>VIN #</b>	<b>Description</b>	<b>Trade In Offered</b>
E3017	1NPSL50X5DD209350	2013 Peterbilt with Vactor 2112 Fan Combination Catch Basin/Sewer	<b>\$</b>

<b>c) WARRANTIES AND EXTENDED WARRANTIES</b> Attach Warranty information including extended warranties. Any additional cost is to be stated:	
Extended Bumper to Bumper Warranty State term:	<b>State:</b>
Other available Warranty Options:	<b>State Options:</b>
	\$

<b>d) VALUE ADD</b> Provide information on what makes your firm innovative, what is your competitive advantage, and what other services your firm provides that would assist or be of benefit to the City

<b>e) SUSTAINABLE BENEFITS AND SOCIAL RESPONSIBILITY</b> a) Describe all initiatives, policies, programs and product choices that illustrate your firm's efforts towards sustainable practices and environment responsibility in providing the services that would benefit the City
b) What policies does your organization have for hiring apprentices, indigenous peoples, recent immigrants, veterans, young people, women, and people with disabilities:
c) What policies does your organization have for the procurement of goods and services from local small and medium sized business or social enterprises:

**Attention Purchasing Manager:**

6. **I/We, the undersigned duly authorized representative of the Proponent**, having received and carefully reviewed all of the Proposal documents, including the RFP and any issued addenda posted on the City's website [www.coquitlam.ca/Bid-Opportunities](http://www.coquitlam.ca/Bid-Opportunities) and having full knowledge of the Site, and having fully informed ourselves as to the intent, difficulties, facilities and local conditions connected to performing the Services; submit this Proposal in response to the RFP.
7. **I/We** agree to the rules of participation outlined in the [Instructions to Proponents](#) and should our Proposal be selected, agree to the City's [Standard Terms and Conditions - Purchase of Goods and Services](#) and will accept the City's Contract as defined within this RFP document.
8. **I/We acknowledge** receipt of the following Addenda related to this Request for Proposals and have incorporated the information received in preparing this Proposal.

Addendum No.	Date Issued

**This Proposal** is submitted this \_\_\_\_ day of \_\_\_\_\_, 20 \_\_\_\_.

**I/We have the authority to sign on behalf of the Proponent and have duly read all documents.**

<b>Name of Proponent</b>	
<b>Signature(s) of Authorized Signatory(ies)</b>	<b>1.</b>
	<b>2.</b>
<b>Print Name(s) and Position(s) of Authorized Signatory(ies)</b>	<b>1.</b>
	<b>2.</b>

**APPENDIX A – PREFERRED SPECIFICATIONS – One (1) Hydro Excavator/Flush Combo Truck**

ITEM	DESCRIPTION	PREFERRED SPECIFICATIONS	MEETS PREFERRED SPECIFICATION YES/NO
<b>1.</b>	<b>GENERAL</b>	It is the intent of these specifications is to describe the preferred requirements for <b>One (1) Hydro Excavator/Flush Combo Truck</b> . The unit must have a standard road package that meets all legal requirements for operation on public roadways, including the BC Motor Vehicle Act, the federal Motor Vehicle Safety Act and Work Safe BC regulations.	
A.	Make		
B.	Model		
C.	Year of Manufacture		
D.	Vehicle Weight		
E.	Regulatory	<p>Must comply with all WorkSafe BC Regulations.</p> <p>Must meet all B.C. Motor Vehicle Regulations and meets all requirements to be driven on highways, roads, etc.</p> <p>Must meet 2020 mandatory emission requirements.</p> <p>To meet Canadian motor vehicle safety standards.</p>	
<b>2.0</b>	<b>Chassis</b>		
	Wheel base - as short as possible to meet weight distribution requirements		
	Cab to axle - to meet weight distribution requirements		
	Intended Service Functions: Hydro Excavation/sewer flushing		
	Automatic Greasing System		
<b>3.0</b>	<b>Engine Equipment</b>		
	Diesel - Minimum 425 hp & 1600 ft. lb torque		
	2023 emission compliant - State		
	Fuel economy - State		
	Lubricant, fuel & coolant filters - spin on type preferred		
	Fuel water separator		
	Engine Brake		
	Fuel - Biofuel compatible – State percentage		
<b>4.0</b>	<b>Cooling System</b>		
	HD radiator - must meet Engine & Transmission cooling requirements Extended Life Coolant		
	Transmission Cooler - To meet needs of Engine and Transmission		
	Block Heater - Max 1500w with hard wiring to outside of cab		
	Hoses - Silicon with constant torque clamps		
<b>5.0</b>	<b>Electrical</b>		

	Alternator must have a rated amperage to handle vehicle requirements, and 3000 Watt inverter.	
	Circuit breakers - Auto reset to replace fuses	
	Lighting system - 12 volt lighting system w/circuit protection, LED where possible	
	Wiring: Circuits numbered and /or color coded. All wiring from back of cab to be sealed. Must have a minimum of 4 integrated auxiliary switches.	
	Battery (ies) - to meet requirements	
	Unit shall be supplied with 110 volt, 3,000 watt electrical outlet on the passenger side to power jobsite tools	
	Back up alarm - Max 102 dBA	
<b>6.0</b>	<b>Automatic Transmission</b>	
	6 speed Allison automatic transmission	
	Synthetic Lubricant for extended warranty	
	Transmission temperature gauge	
<b>7.0</b>	<b>Front axle</b>	
	Front axle 20,000 lb capacity	
	Heavy duty shock absorbers	
<b>8.0</b>	<b>Rear axle</b>	
	Rear axle 46,000lb capacity (Tandem)	
	Power divider lock with separate switch	
	Dual axle lock with separate switches	
<b>9.0</b>	<b>Steering</b>	
	Power steering with tilt and telescopic	
<b>10.0</b>	<b>Brakes</b>	
	Front Drum brakes, size and thickness of drums and shoes	
	Option: Front Disc Brakes (size and thickness of rotors, pads, and calipers)	
	Rear Drum brakes, size and thickness of drums and shoes	
	Option: Rear Disc Brakes (size and thickness of rotors, pads, and calipers)	
	Operation and type of emergency brake mechanism.	
<b>11.0</b>	<b>Wheel Rims and Tires</b>	
	<b>Front Aluminium (non-polished) wheels - to suit GVWR</b>	
	Traction tires installed	
	<b>Rear Aluminium (non-polished) wheels - to suit GVWR</b>	
	Traction tires installed	
<b>12.0</b>	<b>Frame and equipment</b>	
	Must be suitable for Hydro Excavator installation	
	Tow hooks: -Two (2) front -Two (2) rear	
	Front and rear mud flaps	



<b>13.0</b>	<b>Fuel tank</b>	
	Size, capacity and location of diesel fuel tank and D.E.F tank. -Labelled "Diesel Fuel Only" and "D.E.F. only"	
	Fuel tank must have a minimum capacity of 100 gallons.	
	Only one (1) fuel tank preferred.	
<b>14.0</b>	<b>Cab Equipment</b>	
	Dual wipers with intermittent	
	Dual Electric & air horns	
	Multi speed high output heater and defroster c/w air conditioning	
	AM/FM radio with Bluetooth	
	Electric heated and adjustable mirrors and dual front fender mounted convex mirrors	
	Power windows and locks	
	Drivers seat to be air ride premium cloth or vinyl seat with all ergonomic adjustments. Rider seat to be base cloth or vinyl -Both grey in colour, with heavy duty weather resistant seat covers.	
	Floor covering to be black or grey vinyl	
	Gauges - Tach, Fuel, DEF, Oil Pressure, Coolant Temp, Brake Application, Primary and Secondary Air Reservoir Gauges, and air suspension gauge	
	Outside temperature gauge dash mounted, factory installed	
	Door activated dome light	
	Tachometer, Engine Hour meter	
	Ambient noise inside cab (db)	
	Access and egress grab handles left & right	
	Cab color std white c/w base and clear coat, black frame, gray interior with sound suppression	
	Reflector kit, 5 lb fire extinguisher-mounted	
	Backup Camera	
	Grounding strap	
	Air line connection near drivers door for blowing out cab and removing dirt from boots and clothes	
<b>15.0</b>	<b>Hydraulic System</b>	
	Hydraulic system to handle all hydraulic requirements	
	Hydraulic tank with sufficient volume to provide operation and adequate cooling, preferably an integrated split tank fuel/hydraulic oil.	
	PTO suitable for Allison transmission	
<b>16.0</b>	<b>Hydro Excavator Unit</b>	
	Minimum 12 cubic yard capacity debris body	
	Debris Body constructed from corrosion and abrasion resistant material	
	Debris body shall be reinforced to withstand vacuum level	
	Industrial style rear debris door hydraulically opened and closed	

	Rear locking system shall be designed such that no hydraulic components are located inside the debris body	
	Rear door shall have a minimum of two (2) 6" knife valves with a cam-loc connector	
	The 6" knife valves to be located at the 3 o'clock and 6 o'clock position on the rear door	
	Debris body shall be equipped with a mechanical load level indicator	
	Debris body shall raise sufficiently to allow for complete discharge of waste	
	Rear door to be hinged at the top with a replaceable seal on the door	
	Automatic shutoff mechanism to prevent overfilling debris body	
	Truck must have ability to hold nine (9) suction pipes with quick release clamps and be ergonomically accessible	
	Replaceable debris deflector shield	
	Debris Flush out system	
	Electric vibrator on under-side of body with thermal overload protection	
	Vented, heated, and lighted storage cabinet to be mounted easily accessible for the purpose of drying and storing wet gear/clothing	
<b>17.0</b>	<b>Water Tanks</b>	
	Manufactured from non-corrosive material	
	Water tanks shall share no common walls with the debris tank to prevent corrosion and excessive fatigue	
	Water tanks shall be equipped with a strainer and 25' fill hose	
	Equipped with air gap fill	
	Water tanks must be equipped with a water level gauges and low level warning	
	Water tanks shall have easily accessible drain valves	
	Air purge system using chassis air to assist in winterizing and draining	
	Total Capacity of water tank(s) - State	
	To be equipped with a water boiler system for cold weather operation	
<b>18.0</b>	<b>Vacuum System</b>	
	Vacuum shall be provided by a dual stage centrifugal fan to be driven by chassis engine. Dual engine units will not be considered.	
	Interlock safety system shall prevent engagement of drive axle	
	Vacuum system output (Hg) - State	
	The system shall have a cyclonic separator with 12" cleanout door located at ground level for access	
	Filter house shall contain a removable and washable filter element at ground level for access	
	Air operated vacuum relief valve controllable from the control panel, wireless remote, and wired pendant. Relief valve shall be sized to fully disable vacuum.	

<b>19.0</b>	<b>Boom System</b>	
	All vacuum pipes shall be connected to vacuum pick up tubes and extension pipes by quick clamps to join the aluminum flanges on the pipes.	
	One (1) quick clamp per pipe to be provided (Total of 9)	
	Boom shall be mounted at the front mount position	
	Vacuum boom system shall be a steel trombone style	
	Two (2) extreme high output LED worklights mounted on boom to maximize view of working area	
	Hydraulically powered boom (up, down, left, right, extend and retract)	
<b>20.0</b>	<b>Lights</b>	
	Separate stop, tail and signal lights recessed with protective guards to be LED	
	All required clearance lights LED type and reflectors as to Canadian motor vehicle safety standards and BC motor vehicle regulations	
	Clear backup lights to be LED and activate when reverse gear is selected	
	Amber strobes mounted on mirrors, rear corners, and front corners of vehicle	
	LED amber arrow board on rear of truck	
	Adequate LED work lighting to provide nighttime visibility to work area	
	Two (2) Rear facing LED worklights to assist in backing up vehicle	
<b>21.0</b>	<b>Water Pump and Flush Reel</b>	
	Water pump rated at 70 GPM at 3000 psi - minimum	
	Front mounted reel, with minimum 600 feet of 1" Piranha hose. Reel to be equipped with auto rewind, 270 degree rotation, hydraulic self leveling, hydraulic extension, and hose pinch system. Controls to be mounted on the reel, and also controlled from remote.	
	Truck to be equipped with ½" lateral flushing line that is run hydraulically. Must have a minimum off 150' of hose. Lateral system to be side mounted approximately middle of truck.	
	A total of two (2) 1 1/2" spring rewind hose reels with a minimum of 75' of hose on each reel. Both reels should be run off of the pump but valved in such a way that only one can run at a time. One reel will be high pressure line, and one to be a low pressure line.	
	Pump shall be able to be turned on or off via the wireless remote and wired pendant	
	Handgun hose must have a minimum of 3,500 psi and a burst pressure minimum of 4,000 psi. Hose shall be 1/2" I.D. and 75' in length mounted on a spring retractable hose reel.	
	Handgun hose and water pump shall be mounted in a heated cabinet	
<b>22.0</b>	<b>Control Panel</b>	

	Located on curbside encased in aluminum box for protection from weather	
	Control Panel shall include the following: -engine tachometer -water level gauge -engine throttle control -water pump on/off -fan RPM -hydraulic oil temperature -water temperature -water level -debris level -water pump hour meter -fan hour meter -vacuum on/off -full boom controls -full flushing system controls -emergency stop button	
<b>23.0</b>	<b>Water Heater</b>	
	Diesel fired water heater shall be supplied <b>(State specifications)</b>	
<b>24.0</b>	<b>Vacuum Tools and Accessories</b>	
	Basic vacuum tube package shall include the following: -Two (2) 8" x 5' aluminum pipes -One (1) 8" x 7' aluminum pipe -One (1) 8" x 7' aluminum fluidizer tube w/a rubber tube - Four (4) 8" quick clamps	
<b>25.0</b>	<b>Chassis Equipment &amp; Storage</b>	
	One (1) heated and insulated aluminum water pump cabinet mounted curbside to house the water pump and retractable handgun reel system	
	One (1) weather tight aluminum cabinet for controls	
	One (1) aluminum toolbox streetside, as large as possible	
	One (1) aluminum toolbox curbside, as large as possible	
	One (1) aluminum toolbox curbside aft of rear tire, as large as possible	
	One (1) aluminum toolbox streetside aft of rear tire as large as possible	
	Cone holder (6 cones)	
	Shovel/Tool Rack (shovel, rake, broom)	
<b>26.0</b>	<b>Equipment Protection</b>	
	Unit shall be equipped with fan over-speed protection which activates the emergency stop system to prevent damage blower.	
	Unit shall be equipped with hydraulic overheat protection which activates the emergency stop system to prevent damage blower.	

	Unit shall be designed to prevent simultaneous multiple control inputs	
<b>27.0</b>	<b>Paint</b>	
	All metal surfaces shall be shot or sand blasted prior to painting	
	All surfaces shall be cleaned by phosphate saline wash process prior to painting	
	The unit shall have a minimum of two and one half mil of suitable primer coat applied	
	The unit shall have a minimum of two and one half mil of polyurethane enamel paint applied	
	All modular components shall be painted prior to the assembly process	
	<b>GENERAL REQUIREMENTS</b>	
<b>28.0</b>	<b>Miscellaneous</b>	
	Must comply with all WorkSafeBC Regulations	
<b>29.0</b>	<b>Manuals &amp; Training</b>	
	Provide 2 complete sets of: Shop Manuals, Operator's Manuals, and Parts Manuals. Hard copy and CD or DVD formats required Complete wiring schematics	
	Training - Factory Rep will conduct a seminar for mechanical maintenance staff - covering PM requirements, trouble shooting, and general overview	
	Repair and Operators Instructional Video, DVD	