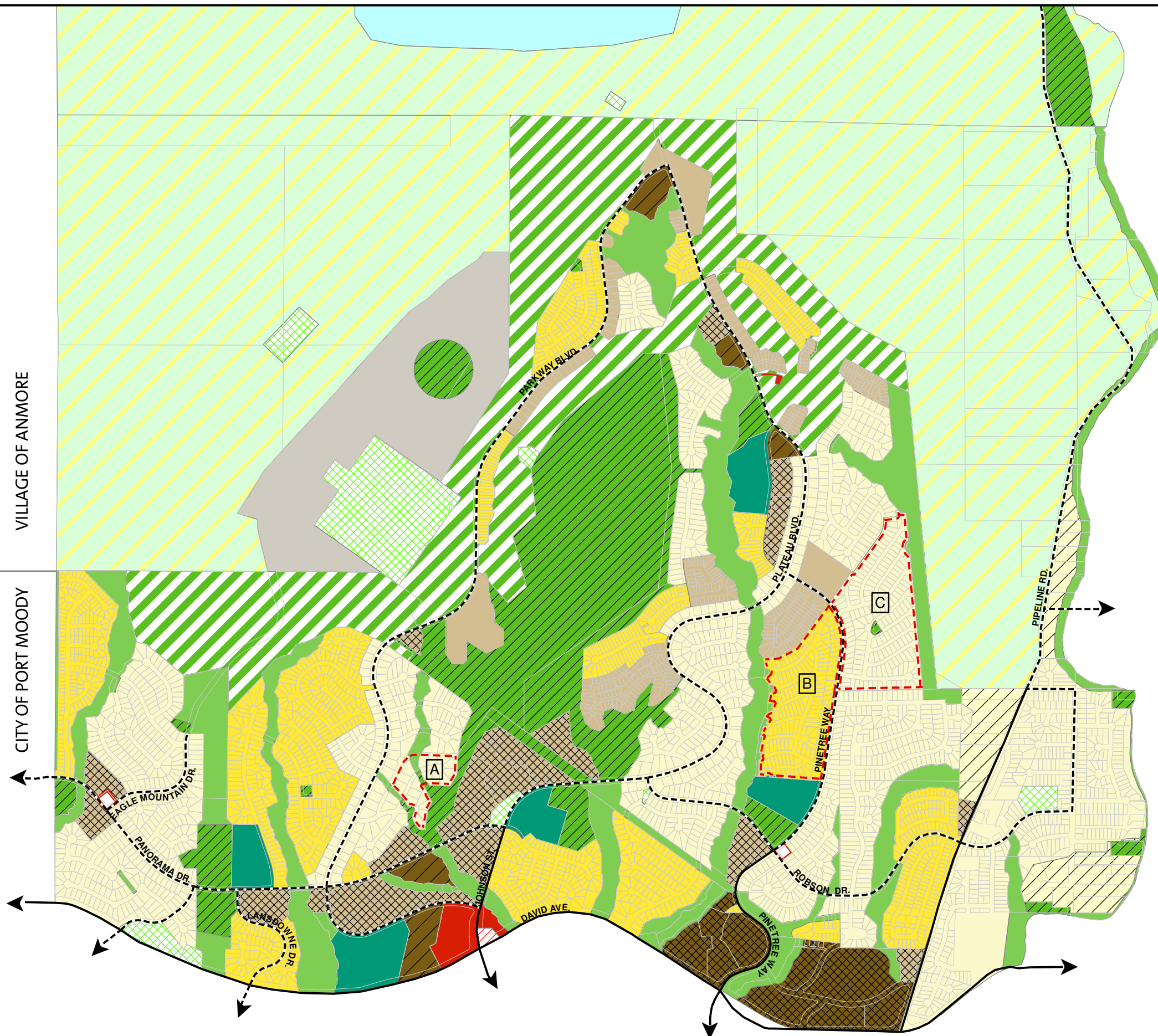


SCHEDULE C-1 NORTHWEST COQUITLAM AREA PLAN

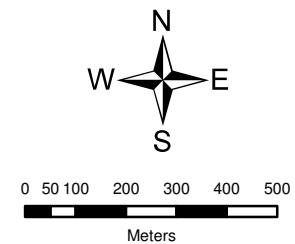
LAND USE DESIGNATIONS

- Area Under Study
- Civic and Major Institutional
- Cluster Housing
- Compact One Family Residential
- Extensive Recreation
- General Commercial
- High Density Apartment Residential
- Local Commercial
- Medium Density Apartment Residential
- One Family Residential
- Open Space
- Parks and Recreation
- Protected Resource - Watershed
- Rural Resource
- School
- Service Commercial
- Suburban Residential
- Townhousing
- Special Areas
- Arterial Street
- Standard Collector Street



VILLAGE OF ANMORE

CITY OF PORT MOODY



Adopted: March 4, 2002
 Last Amended: April 30, 2018 Bylaw No: 4665, 2017
 Map Projection: UTM Nad1983
 Prepared By: Planning & Development
 Source: City of Coquitlam - OCP GIS layer

